



Log Details - #10

Aurora Lake

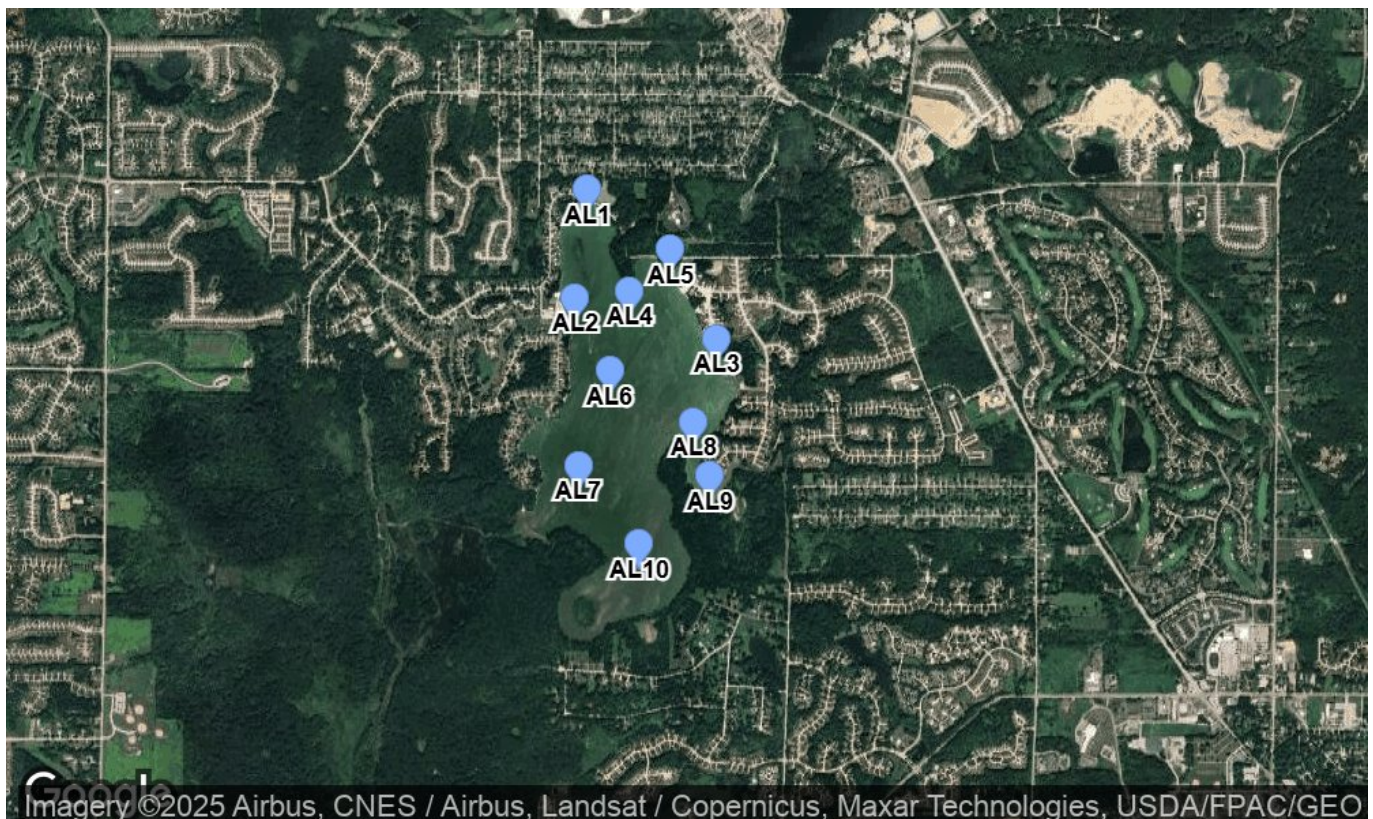
1206 Surfside Cir, Aurora, OH 44202,
USA

General Info

General Info

Weather Data				General Information	
Temperature	44°F			Start Date/Time	10/30/2025 09:43 AM
Conditions	Rain	Wind	4.57 mph North	Lead Staff	Ed Kwietniewski
Humidity	94%	Pressure	1005 hPa	Additional Staff	
Sunrise/Sunset	7:55 AM / 6:22 PM				

Map



Map Graphics

Type	Coordinates	Label	Area	Perimeter
marker	41.323328, -81.385434	AL10	N/A	--
marker	41.327034, -81.389253	AL7	N/A	--
marker	41.326542, -81.380982	AL9	N/A	--
marker	41.329092, -81.382001	AL8	N/A	--
marker	41.331509, -81.387280	AL6	N/A	--
marker	41.337222, -81.383460	AL5	N/A	--
marker	41.333000, -81.380542	AL3	N/A	--
marker	41.335256, -81.386035	AL4	N/A	--
marker	41.340057, -81.388696	AL1	N/A	--
marker	41.334934, -81.389469	AL2	N/A	--

Observation

Species	Type	Severity	Location	Treated
Eurasian watermilfoil	Submerged plants	Very slight		No
Common waterweed	Submerged plants	Very slight		No
Duckweed	Floating plants	Very slight		No

Photos



Boat Launch



West Cove



General Appearance of Water at AL6



Example of common waterweed found during visit



Example of Eurasian watermilfoil found during today's visit.



Close up of Eurasian watermilfoil



Duckweed noted during today's visit.

Name: Aurora Lake (Shoreline Lake)
 Site Name: Shoreline Lake
 Tech: MLB/MLC
 Date: 10/10/20

Depth	Temperature		Dissolved Oxygen	pH		Secchi Depth	Chlorophyll-a	
	Surface	Bottom		Surface	Bottom		ug/L	ug/L
1	17.2	11.1	15.5	7.7	7.2	1.08	1.08	
2	17.0	11.2	15.5	7.7	7.2	1.08	1.08	
3	17.0	11.2	15.5	7.7	7.2	1.08	1.08	
4	17.0	11.2	15.5	7.7	7.2	1.08	1.08	
5	17.0	11.2	15.5	7.7	7.2	1.08	1.08	
6	17.0	11.2	15.5	7.7	7.2	1.08	1.08	
7	17.0	11.2	15.5	7.7	7.2	1.08	1.08	
8	17.0	11.2	15.5	7.7	7.2	1.08	1.08	
9	17.0	11.2	15.5	7.7	7.2	1.08	1.08	
10	17.0	11.2	15.5	7.7	7.2	1.08	1.08	
11	17.0	11.2	15.5	7.7	7.2	1.08	1.08	
12	17.0	11.2	15.5	7.7	7.2	1.08	1.08	
13	17.0	11.2	15.5	7.7	7.2	1.08	1.08	

Specific Conductance
 AL1: .97
 AL2: .98
 AL3: 1.06
 AL4: 1.15
 AL5: 1.31
 AL6: 1.28
 AL7: 1.26
 CAC: 1.18

Notes

Today was our final, regularly scheduled visit to Aurora Lake.

Overall, the lake seems to be maintaining a low quantity of algal biomass as we progress into mid-fall. Overall mean chlorophyll-a concentration throughout the lake was 1.28 ug/L. This is a reduction from our previous visitations mean of 1.67 ug/L. Although unusual fall warm weather can create an environment that supports algae growth, the cold temperatures and rain we have been experiencing so far will continue to restrict algal productivity. I would hypothesize that algae growth will not be an issue until next year. Given the low algal concentrations, no applications were needed. Specific chlorophyll-a data is as follows:

- AL1: .97 ug/L
- AL2: .98
- AL3: 1.06
- AL4: 1.15
- AL5: 1.31
- AL6: 1.28
- AL7: 1.26

AL8: 1.16
AL9: 2.45
AL10: 1.08

Our created depth profile at our deep sampling point of the lake (AL6) showcases a lake that is completely mixed from surface to bottom. This comes as no surprise given similar conditions over the past few sampling periods. All collected parameters were typical of a fully mixed lake and no issues were noted from the collected data.

Additional Eurasian watermilfoil (EWM) and common waterweed fragments were found at location AL9. We also observed this during last visit in the same location and likely derives from an upstream area. Although increasing the amount of submersed vegetation is an overarching goal of managing Aurora Lake, care should be taken to observe any established growth of invasive submersed plants such as Eurasian watermilfoil. Given the shallow nature of the lake, a stable state change could result in a monoculture of EWM overtaking recreational areas or even the whole lake proper. A diverse assemblage of native vegetation would be a preferred outcome for Aurora Lake.

Thank you for an excellent season!
-Ed Kwietniewski