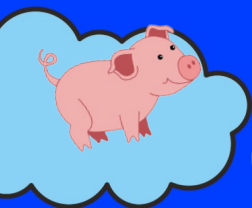
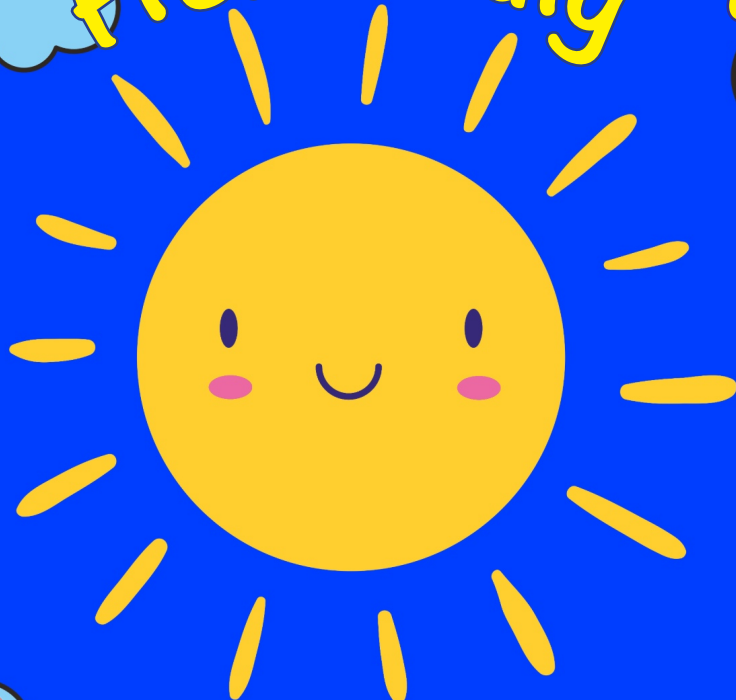


Hello July

Free
copy



Pukka Bath



Sash Window Restoration

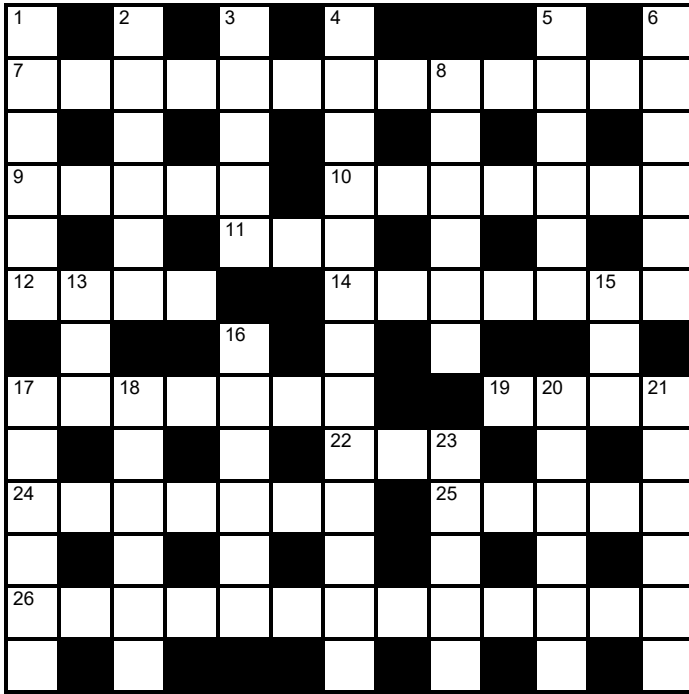
- Replacement & repair of existing windows
 - Replacement sash cords
- Draughtproofing
- Casement windows



**For a free quote, call Tom George on
07800546707**

www.tgeorge.co.uk email: tom@tgeorge.co.uk

Crossword



Across

Down

- 7 Dismantle three-ton hoe or face a binary choice (3,2,3,5)
- 9 Lament (5)
- 10 Spent (4,3)
- 11 Mountain pass (3)
- 12 Hong Kong martial arts actor Jackie --- (4)
- 14 Means (7)
- 17 Gold-extracting chemical (7)

- 19 Cons (4)
- 22 Mutt's mitt (3)
- 24 Toffee-nosed (5-2)
- 25 Such as a car's coil spring (5)
- 26 Haphazard Peers enter run for businesspeople (13)

- 1 Vast (6)
- 2 Small white whale (6)
- 3 Swiss currency (5)
- 4 American punk-funk band, the Red Hot --- (6,7)
- 5 Unhorsed (6)
- 6 Total savages (6)
- 8 Duller of the senses (6)
- 13 "Listen!" (3)

- 15 Excavated (3)
- 16 Like Lady Luck (6)
- 17 Redeemed (6)
- 18 Keeness of vision (6)
- 20 Almost (3,3)
- 21 Form of discrimination (6)
- 23 Complain (5)

Solution on page 24



REMOVALS & STORAGE

**TAKING THE STRESS
OUT OF REMOVALS
FOR BATH HOMES
& BUSINESSES**

**CONTACT US
TODAY FOR A
FREE QUOTATION**



My Removals Ltd
2021/22 WINNER
New Removals Company
of the Year



**House & Office
Packaging Service
Furniture Assembly
Fine Art &
Piano Handling
Local, National
& International**



CONTACT

T: 01225 941 046 | 07931 719 837

www.myremovals.uk

Teenage Kicks? Pet teens pushing limits end up in rescue centres

Think mood swings, changing hormones and late-night antics are just for human teenagers? Think again. Bath Cats and Dogs Home says adolescent pets are challenging owners with the animal version of the teen years, with young cats and dogs chewing, climbing, ignoring recall and having midnight zoomie sessions.

Now the charity is warning that more of these four-legged teens are ending up in rescue centres. More than 70% of dogs and 16% of cats currently in its care are aged between six months and three years, the pet equivalent of adolescence, when energy soars, curiosity takes over and boundaries are pushed.

Just like human teenagers craving independence, these young pets are testing limits as they grow up. While these behaviours are often perfectly normal for their age - from jumping up and chewing to scratch-happy climbing sprees and night-time chaos - many owners find this stage difficult to manage. This behaviour is not the pet's fault, but a natural part of development that requires time, patience and consistent training. Combined with money pressures and the rising cost of living, the charity is now seeing more young animals given up during their teenage phase.

Behaviour specialists at the Centre emphasise that these challenges are both temporary and manageable with the right support. Nicky Charman, Behaviour and Training Manager, said: "Many of the behaviours we see in adolescent dogs — such as pulling on the lead or poor recall — are not signs of defiance, but of inconsistent training and structure. With patience and guidance, these dogs can mature into well-adjusted companions."

The same is true of cats. Jessica Dowler, Cat Behaviour Assessor, noted: "Young cats are naturally inquisitive and energetic, which can sometimes show as destructive behaviours like climbing, scratching or chewing. However, with consistent routines and enrichment, they settle well and make wonderful pets."

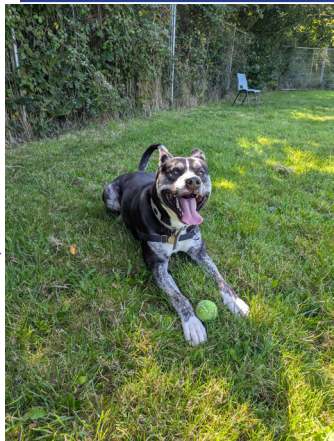
Many adolescent animals stay longer at Bath Cats and Dogs Home while receiving behaviour support, making up a large part of the Centre's intake. Brian, a young Husky cross, is a typical example—he stayed at the Centre for 579 days before eventually finding a new home. Like many young dogs, he was energetic and in need of guidance. With routine, understanding and expert support, his affectionate personality began to shine.

The charity expects more teenage pets to arrive over the summer, placing additional pressure on staff and resources as each dog's kennelling costs are around £1,200 per month. Supporting young animals through this formative stage requires significant time, patience, expertise and funding.

Bath Cats and Dogs Home are appealing for public support this summer to help meet the growing demand and ensure these young animals are given the opportunity to thrive Teenage tails need you!



Teenage rescue dog, Brian was cared for by Bath Cats & Dogs Home for 579 days before finding a home



Young cat Bailey



BATH FAMILY LAW
LLP

The smarter way to separate

Avoid conflict, courts and expensive legal fees



Initial appointments always available at our easy to reach client meeting rooms in Bath with free parking



Our team are experts in resolution and collaborative law. Scan the QR code for a **FREE** initial consultation with one of our **family law advisers**

📍 10 Laura Place, Bath, BA2 4BL

🌐 bathfamilylaw.co.uk

✉️ team@bathfamilylaw.co.uk

☎️ 01225 941222

LIGHTS! CAMERA! ACTION! :

120 Years of Cinemas and Films in Bath The Museum of Bath at Work is celebrating all things cinema!

- Find out about Bath's earliest cinemas before the First World War
- Explore the timeline history of cinemas in Bath and the surrounding area
- Learn about the people who worked there – projectionists, usherettes and managers
- What it was like to go to the cinema in years gone by and what did people go and see?
- On location: the films with scenes in Bath
- See the cinema memorabilia and other fun items on display Enjoy some nostalgia!
- Exhibition book with original research on sale
- Cinema-themed goodies on sale
- Programme of film screenings and talks

LIGHTS! CAMERA! ACTION!

120 Years of
Cinemas and Films in Bath
Film Screenings and Talks

Check our website and Facebook page for updated details, times and tickets – more to be announced.

www.museumofbath.org www.facebook.com/68848470/

- 🎬 Sunday 17 May: Cinema Paradiso at Little Theatre Cinema
- 🎬 Thursday 28 May: The Smallest Show on Earth at the Museum
- 🎬 Friday 12 June: 80,000 Suspects of the Museum
- 🎬 Wednesday 24 June 1881: Bath Film Office of the Museum
- 🎬 Wednesday 8 July: Catch Us If You Can at the Museum
- 🎬 Saturday 22 August: Two And Two Makes Six at the Museum
- 🎬 Sunday 6 September: Rock Around The Clock at Woodcombe Social Club
- 🎬 Saturday 12 September: Persuasion at the Museum
- 🎬 Monday 14 September: Shorts & documentaries featuring Bath at the Museum
- 🎬 Saturday 19 September: Night At The Museum at the Museum
- 🎬 Saturday 24 October: Vintage children's animation tv shows at the Museum
- 🎬 Saturday 31 October: The Open Road at the Museum
- 🎬 Sunday 8 November: Battle of the Somme 1916 at Little Theatre Cinema
- 🎬 Saturday 16 November: Mystery film to be announced at the Museum

Buy the Book!
The Light Camera Action book is full of original research and fascinating stories about the history of cinemas in our area, with additional material not in the exhibition

Museum of Bath at Work
Bath Industrial Heritage Trust Limited
A company limited by guarantee (02209894) and registered as a charity (800209)

What

EXHIBITION: LIGHTS! CAMERA! ACTION! : 120 years of Cinemas and Films in Bath

Where

MUSEUM OF BATH AT WORK Julian Road, Bath BA1 2RH

When

Saturday 9 May – Sunday 29 November 2026

Open every day Saturday 9 May–31 October and weekends in November

Opening hours: 10.30-17.00 (last admission 16.00)

Entry to the exhibition is included when you buy your Museum admission ticket



Beau Nash Picture House staff outing,
July 1923 (Bath Chronicle & Weekly
Gazette 14 July 1923)

LIGHTS! CAMERA! ACTION!

120 Years of
Cinemas and Films in Bath

Saturday, 9 May – Sunday, 29 November 2026

Museum of Bath at Work
Julian Road, Bath BA1 2RH

We're celebrating all things cinema – probably the most significant cultural development of the 20th century.

- ★ Bath's earliest cinemas
- ★ Timeline history of cinemas in Bath and surrounding area
- ★ The people who worked there – projectionists, usherettes and managers
- ★ What it was like to go to the cinema in years gone by?
- ★ What did people go and see?
- ★ How films got made
- ★ On location: the films with scenes in Bath
- ★ And much more, with some fun items and memorabilia on display!

Open every day 9 May–31 October, and weekends in November
Opening hours: 10.30–17.00 (last admission 16.00)

Entry to the exhibition is included when you buy your Museum admission ticket

Museum of Bath at Work



Bath Hearing Services

Ear Wax Removal and Ear Health Checks

Weekly clinics at The Hub, Mulberry Park, Combe Down

HCPC and BSHAA Registered Audiologist

Book Now

07765 011261

www.bathhearingervices.co.uk



Abney & Baker

Putting the care into homecare

POWERED BY



Ageing **stronger** with **PREVENT+**

Worried about losing balance at home?

Our weekly coach-led programme, designed by EverFit's expert team, helps you feel steady on your feet.



Before starting with the coaches, I thought my future would gradually diminish until I was chair-bound.... but now I want to keep going. Now I can go on the bus and the train. It has helped my freedom to no end.

- Brian, Client



Scan the QR code for more information or contact us at **0333 430 4880**

What's On, regular events

Mondays, 1.30pm-4pm. Whist Club, Saltford Hall, Wedmore Road, Saltford, Bristol BS31 3BY. A friendly club who love to play cards, first week free then £3 per week. Contact David on davidvgray13@outlook.com or 07900218226

Tuesdays 12.30 – 1.30pm FREE Feel Good Walks with Time Bank Plus. Take a step towards better health and wellbeing with our FREE weekly walks! Join us for a relaxed, sociable stroll around SW Bath (1-2 miles) and feel the benefits. Whether you're new to walking or just want to get out and about, it's the perfect opportunity to connect with others and boost your mood. No need to book. Meet at Time Bank Plus, 86 High Street, Twerton, BA2 1DE. For more info: <https://timebankplus.co.uk/wp/groups-2> 01225 442813 timebankplus@gmail.com

Tuesdays, from 13.00 to 14.00, MS Society Seated Exercise, St Andrews Hall, Hawthorn Grove, Combe Down, BA2 5QA, seated exercise class for further information please call the dedicated phone line 08000 665 355.

Wednesdays 12 – 2pm. Lunch Club in Twerton with Time Bank Plus. Join us for a delicious 2-course hot lunch and a chance to meet new friends at our welcoming Lunch Club in Twerton. Enjoy a tasty meal, fun activities, and great company every Wednesday. Your first lunch is FREE, and after that, it's only £6 for a hearty, home-cooked meal with plenty of social activities. For booking and more info: <https://timebankplus.co.uk/wp/groups-2> 01225 442813 timebankplus@gmail.com

Wednesdays 3 - 4.30pm FREE Yarn Craft activity group at Time Bank Plus. Join with others to crochet, knit, sew or just have a yarn. We have plenty of wool, knitting needles, crochet hooks etc. or bring your own. We also welcome anyone who is happy to share their skills and teach others. No need to book, just drop in to Time Bank Plus, 86 High Street, Twerton, BA2 1DE. For more info: <https://timebankplus.co.uk/wp/groups-2> 01225 442813 timebankplus@gmail.com

Thursdays: 10am-1pm. Bath Embroidery Group, Until 2nd July, resumes on 1st October. Manvers Street Baptist Church Centre Bath. Come and join our friendly group of stitchers. All levels welcome. Tel. For more information 07909968730 NB Manvers Street outside our venue is being dug up and closed until November, but we are still running as above.

Thursdays 10am – 12.30pm FREE Digital Drop-In at Timebank Plus. Free one to one tech help with your mobile phone, tablet, laptop etc. or for advice tackling IT issues. No need to book, just drop in to Time Bank Plus, 86 High Street, Twerton, BA2 1DE. For more info: <https://timebankplus.co.uk/wp/groups-2> 01225 442813 timebankplus@gmail.com

Thursdays 10 – 11am FREE online Creative Writing Group with Time Bank Plus. Unleash your creativity and discover the power of words in our FREE, thriving online Creative Writing group! Whether you're a seasoned writer or just starting out, our weekly Zoom sessions offer fun, inspiring exercises and prompts to get your imagination flowing. Come and explore new ideas, share your writing, and connect with fellow writers in a supportive, friendly environment. For booking and more info: <https://timebankplus.co.uk/wp/groups-2> 01225 442813 timebankplus@gmail.com

Fridays: We Get It is a Bath based charity offering support to anyone who has been diagnosed with any cancer or who is supporting someone with cancer. The friendly & informal Get Together is every Friday at Walcot House, 90B Walcot Street, Bath, BA1 5G between 10AM-11:30AM. You are very welcome to join us for a coffee and a chat any Friday. For more information see our website - wegetit.org.uk - or email us at together@wegetit.org.uk

Saturdays: Walk Bath is a free walking group which takes place every Saturday at 9am. We organise group walks here in the beautiful city of Bath each week and all participants donate to Shelter. www.walkbath.co.uk

Continued on page 18





NORTHAVON
BLINDS

Supplying all types of blinds

We make buying blinds from your **home** or **business** hassle-free. From **quotes** to **fitting**, enjoy seamless service & a **three-year guarantee** for your peace of mind.

☎ 01454 273133

✉ sales@northavonblinds.co.uk

🌐 northavonblinds.co.uk



Miller Kehoe

PAINTING & DECORATING

We are an experienced, family run decorating team providing professional and high quality painting and decorating services in Bath and the surrounding areas.

We carry out interior and exterior works to residential and commercial properties. No job too big or small.

Get in touch today for a free no obligation quote.

Contact Sean on 07377381612
Email sean@millerkehoedecorating.com

Sash Window Restoration

- Draughtproofing
- Replacement & Repair of existing windows
- Replacement sash cords
- Casement windows



We manufacture all replacement joinery in house, enabling us to match your existing windows, giving us control over the construction quality and turnaround time.



**For a free quote, call Tom George on
07800546707**

www.tgeorge.co.uk

email: tom@tgeorge.co.uk



Follow us:
@tgeorgeltd



TRY AN E-BIKE FOR FREE

Six weeks. No cost. No obligation.

Could an e-bike transform your journey to work?

Transition Bath is offering free 6-week loans of high-quality e-bikes to adults who currently commute by car or bus.

- Beat Bath's hills with ease
- Save money on travel
- Arrive feeling energised
- Cut your carbon footprint

The fleet includes standard commuter e-bikes and a long-tail cargo e-bike, ideal for carrying shopping or equipment.

Use the six weeks to discover whether an e-bike could work for you.

Find out more and apply:
ridetowork.bike
info@ridetowork.bike



Nigel Dando
JEWELLER & GOLDSMITH

WE BUY

Gold, Silver & Platinum in
any form or condition.

At the highest price in Bath.

Instant Payment.

Open

Wednesday to Friday 10.30am-3.30pm

Appointments advisable

Saturday 10am-1pm Appointment only



 01225 464013 • nigeldando.co.uk • 11 Pulteney Bridge, Bath BA2 4AY

If you have never thought of Lawn Bowling, think again!

Why bowls?

B = Bowls is a sport for all

O = Open to everyone

W = Women and men, girls and boys

L = Leisurely exercise

S = Sociable and fun

Most of the top ranked bowlers are young, even though most people believe that lawn bowling is for the elderly. As my grandchild once said, "It is a young person's sport played by many older people". This is a shame because several clubs are suffering due to a dwindling membership, as a great many members did not start bowling until they retired.

Lawn bowling is a Commonwealth sport which features able bodied players as well as the para matches for those less fortunate. You do not see people playing football in the upper leagues with one leg or visually impaired, whereas you have many talented players who are differently abled, playing bowls.

Bowls is truly a multi aged, multi abled, multiethnic sport. It has been proved to be a sport which can help de-stress after a hard day's work, whereas boxing can be used to cope with aggression. The player uses communication, maths, science, common sense and tactics without knowing it.

Already we have seen the demise of two or three clubs in Bath and this article is, basically, a plea to stop the rot for others which are only just surviving.

Alexandra Bowling Club is a friendly, sociable club hoping to boost its membership. We enjoy playing the sport and would invite anyone to our Club on a Monday at 6:00pm. Children are welcome too but would need to be able to hold a junior bowl and understand instruction.



For more information ring 01179864866
Felicity Kite President Alexandra Bowling Club, Bath.

Come on, give it a go and have fun!

Sudoku, solution on page 30

	9	2		1				
			9		4			
			8	2			1	6
		1					8	3
						2		
	8	6		9				
		5						
	1			6	8		4	
		3					5	1

BATH HOME
Physio

bathhomephysio.co.uk 07812 909867

Maximise your independence & quality of life

**Specialist home based
physiotherapy for the over 65s**

- Falls prevention and rehabilitation
- General aches and pains
- Pre and post surgery rehabilitation
- Neurological conditions (i.e. stroke)
- Cardiac & pulmonary rehabilitation
- Arthritis and osteoporosis
- Post hospital/illness rehabilitation
- Home environment assessment





RJ Mitchell & Son

Heating, Air Conditioning & Plumbing

At RJ Mitchell & Son Ltd, we've been delivering expert heating and plumbing services to homes across Bath and the surrounding areas for **over 40 years**.

As a **family-run business**, we believe in doing things properly, with **honesty, reliability, and the highest standards of workmanship**. From boiler installations to central heating repairs, every job is completed with care and attention to detail, that's **the Mitchell way**.

Our Services:

- Large domestic Installations
- A full range of central heating services from the smallest radiator to a complete installation, or a simple boiler change
- Combination boilers
- Vented and unvented cylinder installation
- Boiler servicing and breakdown
- Domestic hot and cold systems
- Small works
- Air conditioning - small domestic

Contact us:

www.plumbersofbath.co.uk
 info@plumbersofbath.co.uk
 01225 424089
 07771852751



Scan to follow us on Instagram



PLUMBERSOFBATH

G. MANNINGS

FUNERAL DIRECTORS

Independently Owned & Operated
 106 North Road, Combe Down, Bath, BA2 5DJ



01225 833013

www.gmanningsfuneraldirectors.com
 gmanningsfuneraldirectors@btconnect.com

PHYSIOTHERAPY

Home Visits For Older Adults

- Would you like to improve your strength and balance?
- Have you lost confidence after a fall?
- Would you benefit from rehabilitation support after a stay in hospital?

Private Physiotherapy sessions available
 in the comfort of your own home



Contact Jane for more information
 07734 296636

jane@quantahealth.co.uk

www.physiohomevisitbath.co.uk

Chartered Physiotherapist | 15+ years' experience | HCPC registered

Wellow Village Flower and Vegetable Show 2026

The 76th annual Wellow Village Flower and Horticultural Show will be happening on Sunday 12th July from 12-4pm at the Wellow Recreation Field. The horticultural marquee will be overflowing with the best community grown produce, flower displays, baking, preserves, arts and crafts that the community has to offer. These will all be judged for the wide selection of hotly contested prize cups up for grabs, including lots of prizes for the children.

Outside the marquee, the horticultural theme continues among the plethora of local stalls. Come early with your tools to get them made ship-shape by the Tool Sharpening Service. Locally grown plants provided by Sweet Water Plant Nursery will be for sale, or you can book them for a planting plan if your garden needs a redesign or biodiversity boost. The Radstock-based Bohemian Blooms will be selling their Somerset-grown seasonal flowers, and Louisebees will have delicious local honey and handmade beeswax candles. Bath Soft Cheese will delight with their delicious locally made range of cheeses. Root Connections will be showcasing their local, seasonal, chemical-free veg

box and flower bouquet subscriptions, all of which are grown with the aim of ending rural homelessness. Any profit that is made by the Wellow show goes towards supporting a local cause, and this year we will be supporting Root Connection's important charitable work on addressing the impact of rural poverty.

There will also be an incredible range of local, handmade crafts on show. Dolton Designs will bring their high quality, hand-crafted steel plant supports and garden sculptures. There will be a wide range of beautiful pottery by artisans such as Amelia Harvey Art and the Pottery Collective, including pieces made of Wellow clay. Local favourite Knotalot will be there with their rope creations, and Anderson and Daughters' range of children's quilted jackets, paintings and cards will be sure to delight. And the children will love watching toys and gadgets be created before their eyes at the live 3D printing stand in the pavilion. Many local charities that provide vital support in our communities will also be there showcasing their important work.

The Dog Show is always a major attraction, so get those pooches ready for their time in the ring. Other family attractions include donkey rides, ferret racing, a falconry display, bouncy castle, coconut shy, boules, face-painting, and so much more.

This year the beer tent will be courtesy of the very local Somer Valley Brewing. The Village Parlour Shop will fire up a BBQ, and Wellow-based Kampong Curry will have a range of delicious food including vegetarian options. Excellent cream teas and cake will be provided by the village primary school St Julian's PTA. And there will be a coffee van and an ice cream van to round off the tasty treats.

The 76th Wellow Village Show promises to be an unmissable afternoon full of fun for all the family, and showcasing the very best that the area has to offer.



Find out more at <https://villageshow.wellow.org/>

Squirrels



Wild about the outdoors? So are we.

Squirrels. The newest branch of the Scouts family tree. Where 4-6 year olds can join in too.

This is an age when minds are fizzing, when energy and curiosity levels are sky high, when little lives are full of wow and wonder.

Bath Scouts are looking to open a new Squirrel Drey in the centre of Bath on a Saturday morning.

To register your interest please send us an email with your child's name, age and put 'Squirrels' in the email. We will then be in touch shortly with the next steps.

join@bathscouts.org

bathscouts.org

#SkillsForLife

Copyright © 2021 Scouts Registered Charity numbers 306101 (England and Wales) and SC038437 (Scotland). Photography by Tom Hull.



Scouts
City Of Bath

One Pan Butter Salmon and Asparagus

A delicious and nutritious meal ready in under 15 minutes. Salmon is high in omega 3, which has been shown to play an important role in improving mood and protecting the brain against cognitive decline.

This recipe makes ONE serving, but can be doubled, tripled or even quadrupled to make many meals in bulk. Store it in an airtight container in the fridge for up to 3 days, and reheat in a microwave until piping hot.

INGREDIENTS

1 medium salmon fillet
 1/4 tsp salt
 A pinch of black pepper
 1/2 tsp olive oil
 1 clove of garlic, minced
 60ml low sodium vegetable stock
 1 tbsp butter
 20ml lemon juice
 Chopped parsley
 1 bunch of asparagus - washed and trimmed.
 1/4 tsp chilli flakes
 Slices of lemon to garnish.

METHOD

1. Season the salmon with salt and pepper.
2. Add the olive oil to a pan over medium heat. Gently cook salmon on both sides until golden brown.
3. Remove the salmon from the pan and set it aside on a plate.
4. In the same pan, over medium heat add the minced garlic and vegetable stock. Bring to a simmer.
5. Add the butter, lemon juice and parsley to the pan. Mix well to ensure the butter is melted and evenly combined.
6. Add the asparagus to the pan and toss for 2 minutes to cook.
7. Add the salmon back to the pan to reheat for another minute.
8. Serve the garlic butter, salmon and lemon asparagus with chilli flakes and lemon slices.



Garlic butter
salmon and
asparagus

Est. 1997

Right at your feet

Quality carpet and flooring
curtains and blinds

Since we were established in 1997, our quality carpet ranges, affordable prices and outstanding service have made us the first-choice carpet and flooring suppliers and fitters throughout Bath and Somerset.

We supply and fit carpets and flooring for domestic and commercial customers alike and we now stock luxury curtains and blinds so you can complete your new look.



Visit our Bath showroom in Weston Village and meet us today.

Opening times: Mon-Fri: 9.00am-5.00pm.
Sat: 9.00am-1.00pm. Sun, Bank Hols: Closed.



36-37 High Street, Weston Village, Bath BA1 4BX
01225 424474 • sales@rightatyourfeet.co.uk
rightatyourfeetbath.co.uk



What's On July (continued)

1st July, Wednesday, 8.45am-12 noon. - **Barney's Community Cafe.** St Barnabas Church, Mount View, Southdown. Yummy cakes and drinks, no set costs! For further details, please visit the Church Website at: www.stbarnabasbath.co.uk or visit our Facebook Page at: www.facebook.com/stbarnabasbath/

2nd July, Thursday, 2.30pm - 4pm. Bear Flat Community Tea. Community Hall, Bruton Avenue. Call in for company, conversation, a hot drink with cream tea and home made cakes. No set cost - any donation for Charity welcome.

7th July, Tuesday, 1pm. Bath Flower Club, St Stephen's Church Centre, Lansdown Road, BA1 5SK. We have a flower arranging demonstration by Beverley Clay entitled "What's Left?". The demonstration will start at 1pm. Coffee/tea and cake served before the meeting. Visitors very welcome £8. The arrangements will be raffled at the end of the demonstration. Contact: susanmsouthgate@aol.com. tel: 01225 314531.

8th July, Wednesday, 8.45am-12 noon. - **Barney's Community Cafe.** St Barnabas Church, Mount View, Southdown. Yummy cakes and drinks, no set costs! For further details, please visit the Church Website at: www.stbarnabasbath.co.uk or visit our Facebook Page at: www.facebook.com/stbarnabasbath/

9th July, Thursday, 2.30-4pm Welsh conversation group, Honey Cafe in St. Swithins Church, The Paragon, Bath BA1 5LY Organiser Catherine Dhanjal. Call Catherine on 07941669925 or follow <https://www.facebook.com/CymraegBrysteCaerfaddon>

10th July, Friday, 6-9pm. Articulate Craft Group Organisation, Hillside Hall, Hillside Road, Oldfield Park, Bath, BA2 3NX. articulatebath.com, Prebook.

11th July, Saturday, 2.30pm. Jumble Sale by 10th Bath (Combe Down) Scouts, at Scout HQ, The

Avenue, Combe Down BA2 5EQ. Admission 50p see page 23 for details

12th July, Sunday 12-4pm. Wellow Village Show see page 14.

14th July, Tuesday, New Moon

14th July, Tuesday, 10.30am -12noon. Beaufort Guild. Pultney Rooms, Manvers Street Baptist Church BA1 1JW. A talk by RSPB "Birds of Bath". Info 01225316700

15th July, Wednesday, 8.45am-12 noon. - **Barney's Community Cafe.** St Barnabas Church, Mount View, Southdown. Yummy cakes and drinks, no set costs! For further details, please visit the Church Website at: www.stbarnabasbath.co.uk or visit our Facebook Page at: www.facebook.com/stbarnabasbath/

18th July, Saturday, 9.30am - 12.30pm. Bear Flat Community Market with Share and Repair Workshop. Community Hall, Bruton Avenue. Stalls selling a variety of locally made artisan bread and pastries, preserves, jewellery, cards, gifts and plants. Bring along your items to be repaired whilst enjoying a hot drink with home made cake and savouries to eat in or take away. Contact details : helenscamell@gmail.com

24th July, Friday, 6-9pm. Articulate Craft Group Organisation, Hillside Hall, Hillside Road, Oldfield Park, Bath, BA2 3NX. articulatebath.com, Prebook.

29th July, Wednesday, Full Moon

31st July, Friday, (the last Friday of every month), from 11.00 to 15.00, MS Society Monthly Social, Odd Down Sports Ground, Chelwood Drive, Bath, BA2 2PR, an opportunity to meet others, have a chat and enjoy a light lunch after a guest speaker.



I HEAR EAR CARE
 WWW.IHEAREARCARE.CO.UK

Home visits available

Ear health check
 Ear plugs
 Hearing tests

Microsuction
 Video otoscopy
 Irrigation
 Hearing tests

Registered H A Audiologist
 Health and Care Professions Council

BOOK NOW
 EXPERT CARE

hcpc

drvirginiacollis@icloud.com
 07517 400893



S.R.J Carpentry
 All aspects of carpentry



Kitchens,
 fitted Cupboards and Wardrobes
 Fencing and Gates
 Interior and Exterior Doors
 Purpose made Joinery,
 Flooring
 and much more

for more details visit
www.srjcarpentry.com
 or call M: 07970143338
 T:01761 752575
 E:simonrjones21@hotmail.co.uk



Julia Brown
 MFT

Body Focus Massage
 By Julia
 Juliabodyfocusmassage.co.uk

Massage Practitioner
 07398616335
 Julia.BFM@outlook.com
 Home visits by arrangement

10th Bath (Combe Down) Scouts

Jumble Sale

Sat. 11th July 2026
 2.30 pm
 At Scout H.Q. (The Ave.)
 BA2 5EQ
 Admission 50p Children under 12 Free

Donations accepted on the morning of the sale but please no furniture or electrical items.

The next jumble sale will be Saturday 19th September 2026

Registered Charity 305613

WANTED
Records/CD's/Music
Memorabilia

By Private Collector
 Collections Bought

07590 359817

If you would like to advertise your business or event please email:
pukkabath@live.co.uk



The RNLI is urging people to remember the lifesaving technique as sea temperatures remain extremely cold at this time of year, increasing the risk of cold-water shock.



Bob Taylor, Bridlington RNLI volunteer Water Safety Officer, says: ‘We know that there will be a huge amount of people visiting open water and the coast over the coming months and we want everyone to remember our Float to Live advice. Instinctively, most people who find themselves struggling in the water will begin to panic, swim, or thrash about.

‘We’re urging people to ignore this instinct and remember to float: Tilt your head back, with your ears submerged. Relax and try to breathe normally. Move your hands and legs to help you stay afloat if you need to. It’s fine if your legs sink – we all float differently. By doing this, you give yourself the chance to rest and recover your breathing. Once you’ve regained control of your breathing, you can call for help or swim to safety.’

Jordan Wylie MBE, award winning adventurer and TV personality is supporting the campaign.

Jordan said: ‘If you remember one thing this summer when heading to the coast or open water, make sure it’s the RNLI’s Float to Live advice. This simple technique really could save your life if you get into trouble in the water.’

In 2024, there were 193 accidental drowning fatalities and 84% were male. Males aged 20 to 29 were the highest group for accidental drowning fatalities.

The charity’s advice for anyone struggling in the water is ‘Float to Live’:

- **Tilt your head back, with your ears submerged**
- **Relax and try to breathe normally**
- **Move your hands and feet to help you stay afloat**
- **It’s fine if your legs sink, we all float differently**
- **Practise floating in a local pool if you can.**

If you see someone else struggling in water:

- **Phone 999 to get help**
- **Tell them to stay calm and float on their back**
- **Throw rescue equipment to help them float until emergency services arrive**

For more information visit [RNLI.org/Float](https://www.rnli.org/float)



Lifeboats

Struggling in the water?



FLOAT TO LIVE

Photo: RNLI

The RNLI is the charity that saves lives at sea

The Royal National Lifeboat Institution, a charity registered in England and Wales (209603), Scotland (SC037736), the Republic of Ireland (CHIY 2678 and 20003326), the Bailiwick of Jersey (14), the Isle of Man (1308 and 006329F), the Bailiwick of Guernsey and Alderney, of West Quay Road, Poole, Dorset, BH15 1HZ


#RESPECTTHEWATER

261543950



1. Two photographs, where are we?



2. Which pop star has a birth name of Michael Barratt?

4. The Big Screen refers to what form of entertainment?

6. 'Bateau' is French for which form of transport?

8. A retinoid is a derivative of which vitamin?

10. Which toy company was originated by a Danish carpenter?

12. Lorne sausage is famously which shape?

14. What is the square root of 4?

16. Treacle, custard and bakewell are types of which open pastry case?

3. Which MP was the first woman to take her seat in Parliament?

5. Dai is the Welsh form of which male first name?

7. During which revolution is Dickens 'A tale of two cities' set?

9. Ma Joad is a character in which John Steinbeck novel?

11. Have tennis balls always been yellow?

13. The slang term FOMO means 'Fear OF' what?

15. The three number systems commonly used in computers are binary, decimal and?

17. The All England Club was originally associated with two sports – tennis and which other sport?

Answers on page 30





T GEORGE

L I M I T E D

Building & Restoration

We undertake all kinds of building work including Extensions, Renovations and Structural Alterations. Modern, Period and Listed buildings.

- ▷ Restoration & Refurbishment
- ▷ Extensions
- ▷ Conversions
- ▷ Stone work
- ▷ Porches
- ▷ Carpentry
- ▷ Joinery
- ▷ Oak Framing
- ▷ New Garages
- ▷ Garage conversions



For a free quote call Tom George

on 07800 546 707

www.tgeorge.co.uk

email: tom@tgeorge.co.uk



T GEORGE

L I M I T E D

Follow us:



[@tgeorgeltd](https://www.instagram.com/tgeorgeltd)

**Something not working?
Don't chuck it, we'll try to mend it!**

Southdown Repair Cafe is on at the Methodist Church Centre, BA2 1NJ on the first Saturday of the month, Weston Repair Cafe is on the second Saturday at the Weston Hub BA1 4EH, and Bear Flat Repair Cafe is on the third Saturday of the month at Bruton Community Hall, BA2 4QJ. No need to book, just drop by if you want something repaired, but bear in mind the earlier the better and no new repairs will be accepted half an hour before they close.

Share and Repair also has a Library of Things with over 800 items available to borrow instead of buy, saving you money and space! Fancy making your own ice cream, or planning a barbecue? Would you like to host an evening event or play some outdoor games? Check out our catalogue and see what you can borrow for just a few pounds a week, with delivery available.

Find out all about our services on our website: www.shareandrepair.org.uk

**Toe nail
cutting?**

Corns?

Hard skin?

Finger nail trimming
service available

Home visits, PPE worn

Call: 01225 351646

Mobile: 0777 308 2163

Julia George

MCFHP MAFHP
Foot Health Professional



MEMBER OF
THE SMAF INSTITUTE

Crossword solution

1	C		2	B		3	F		4	C				5	T		6	B	
7	O	N	E	O	R	T	H	E		8	O	T	H	E	R				
	S		L		A		I		P		R		U						
9	M	O	U	R	N			10	L	A	I	D	O	U	T				
	I		G			11	C	O	L		A		W		E				
12	C		13	H	A	N			14	I	N	T	E	N		15	D	S	
	E						16	F		P		E			U				
17	C	Y		18	A	N	I	D	E					19	L	A	G	21	S
	A		C		C				22	P	A		23	W		L		E	
24	S	T	U	C	K	U	P					25	H	E	L	I	X		
	H		I		L		E		I		B		I						
26	E	N	T	R	E	P	R	E	N	E	U	R	S						
	D		Y					S		E		T							

If you would like to advertise your
business or event please email:
pukkabath@live.co.uk



Companions Who Care

SUPPORT WITH A HELPING HAND



OUR SERVICES INCLUDE:

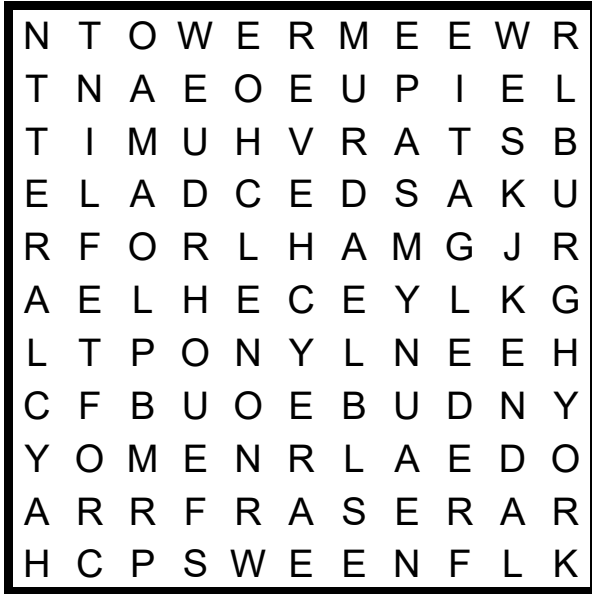
- Home help and light housework
- Laundry and bed changing
- Shopping and meal preparation
- Trips out / help to attend appointments
- Support with interests
- Dementia support
- Hospital discharge support
- Welfare checks / Medication prompting
- Help with admin / IT support
- Respite breaks for carers
- Dog walking / pet care
- Companionship / Just being there

CALL 01225 308141

EMAIL hello@companionswhocare.co.uk

www.companionswhocare.co.uk

Wordsearch



Can you find the terms related to Castles,
listed below, in the wordsearch above?

Auchen
Bere
Burgh
Clare
Croft
Deal
Delgatie
Drum
Elcho
Flint
Floors

Fraser
Gylen
Hay
Hever
Holt
Kendal
Leod
Maol
Mey
Moy
Muncaster

Oer
Piel
Raby
Rait
Red
Star
Sween
Tower
Udny
York

Solution on page 30

Have you seen this insect?

Yellow-legged hornet (aka Asian hornet) *Vespa velutina*



What is it?

A highly aggressive predator of native insects that poses a significant threat to honey bees and other pollinators. Originally from Asia, in 2004 this invasive non-native species was accidentally introduced to France where it has spread rapidly and into neighbouring countries. Since 2016 a number of sightings have been recorded in the UK.



Slightly smaller than the native European hornet. May be confused with other species, shown below in actual size for comparison.



Yellow-legged hornet



European hornet



Median wasp



Hornet mimic hoverfly



Woodwasp

Where might I see it?

May be seen on flowering plants, around beehives, around rotting / fermenting fruit and protein, and at street markets attracted by sweet fruit and fish stalls. Active February to November across England and Wales.

This insect stings, do not disturb an active nest.

Please report sightings immediately with a photo:

- with the iPhone and Android recording app: **Asian Hornet Watch**
- online at: nonnativespecies.org/asianhornet
- by email: alertnonnative@ceh.ac.uk

Find out more and report a sighting:



For more information on invasive non-native species visit: nonnativespecies.org



UK Health
Security
Agency

Enjoy the outdoors but 'be tick aware'

Ticks can transmit microbes that cause infections such as Lyme disease or tick borne encephalitis.

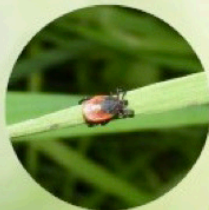
Being tick aware by using the following information can help to reduce the chance of tick bites and of being infected:

- you could be exposed to ticks whenever you spend time outdoors, including when in your garden or the local park
- ticks mainly attach to animals, but sometimes they may bite you, your family or your pets
- you can reduce the chance of tick bites by walking on clearly defined paths, using insect repellent and performing **regular tick checks**
- ticks can bite anywhere on the body, including in your hair. More than one tick can be attached to you at a time
- some tick bites can result in infection, so it is important to remove ticks safely and as quickly as possible
- the safest way to remove a tick is by using a pair of **fine-tipped** tweezers or a tick removal tool
- if you begin to feel unwell with flu-like symptoms, persistent headache, confusion or develop a spreading circular red rash (which usually appears within 1 to 4 weeks after being bitten), **contact your GP or NHS 111 promptly**. Mention if you were bitten by a tick or have recently spent time outdoors

Tick sizes compared to a one penny coin



Tick in the environment



Tick attached to skin



Lyme disease bullseye rash



Tick found under hair



For more information, search for the phrases 'ticks' and 'Lyme disease' on these websites:

www.nhs.uk www.gov.uk www.nice.org.uk/guidance

RUH Marks years of Partnership with Rotary Club

A commemorative plaque was unveiled this week at the Royal United Hospitals (RUH) Bath, marking well over two decades of generous support from the Rotary Club of Bath and other District 1200 Rotary Clubs for RUHX, the hospital's official NHS charity.

The plaque recognises Rotary's longstanding commitment to the RUH. Over the past 25 years, Rotary members from across the district, along with the generous support of the local community, have raised more than £125,000. These funds have shaped care for generations of patients, families and staff. And the shared history of support for local community between the Rotary Club and the RUH Bath pre-dates that!

One of the Rotary Club's most significant contributions supported the refurbishment of the hospital's Accident & Emergency department at the turn of the Millennium. Since then, the Rotary Club of Bath has continued to champion departments and projects at the hospital, including Children's Services and Cancer Care, ensuring patients from Bath and beyond receive extra extraordinary care.

The plaque presentation brought together representatives from RUHX and the Rotary Club of Bath, celebrating a long-term partnership built on shared values, community spirit and a commitment to improving healthcare for local people. Our local community in action caring for the local community!

Rhyannon Boyd, Associate Director at RUHX said: "The Rotary Club of Bath and the clubs in District 1200's support over the last 25 years has been truly transformational. From major capital projects to specialist services such as cancer care, their generosity has touched countless lives and reflects the strength of the commitment of the Rotary movement.

This plaque is a visible thank you and a symbol of what we can achieve together through longterm partnership."

President of the Rotary Club of Bath, Richard Bush added: "Rotarians across Bath and beyond are incredibly proud to support the RUH and RUHX. This partnership reflects Rotary's commitment to service above self, and we are delighted to see the impact our collective fundraising has had for patients and families over so many years."

The plaque is displayed on the ground floor main corridor at the hospital and serves as a lasting reminder of Rotary District 1200's dedication to the Royal United Hospitals Bath and its patients, and of the powerful impact that sustained charitable support can have on local healthcare.



Charity Race Day @ Bath Racecourse

Come and join us for a fantastic day of racing and fundraising at Bath Racecourse, where thrilling racing meets a great cause.

SCAN ME

Tickets:
General Admission = £10pp
Hospitality = £75pp

Bath Racecourse are making a donation for each General Admission ticket sold.

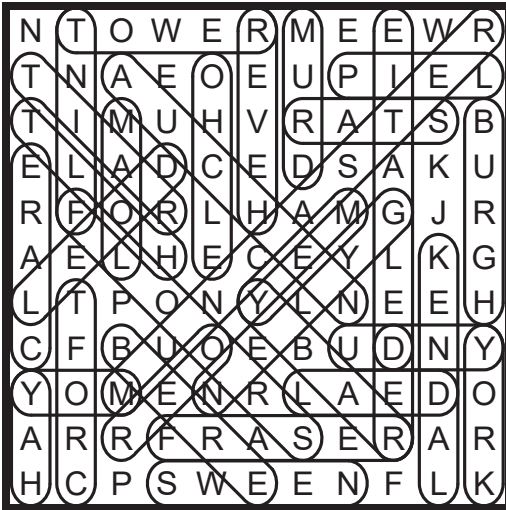
**Wednesday
15 July 2026**
12.30-5pm

Bath Racecourse
Lansdown • Bath
BA1 9BU

**WILTSHIRE
+ BATH AIR
AMBULANCE**

Registered Charity No: 1144097

Wordsearch solution



Sudoku solution

5	9	2	7	1	6	8	3	4
1	6	8	9	3	4	5	2	7
4	3	7	8	2	5	9	1	6
9	7	1	6	5	2	4	8	3
3	5	4	1	8	7	2	6	9
2	8	6	4	9	3	1	7	5
6	2	5	3	4	1	7	9	8
7	1	9	5	6	8	3	4	2
8	4	3	2	7	9	6	5	1

Pukka Bath Quiz answers

1. Rainbow Woods, Bath
2. Shakin' Stevens
3. Viscountess Nancy Astor
4. Cinema
5. David
6. Boat
7. French Revolution
8. Vitamin A
9. The Grapes of Wrath
10. Lego
11. No, they were originally white
12. Square or rectangular
13. Fear of missing out
14. 2
15. Hexadecimal
16. A tart
17. Tennis & croquet

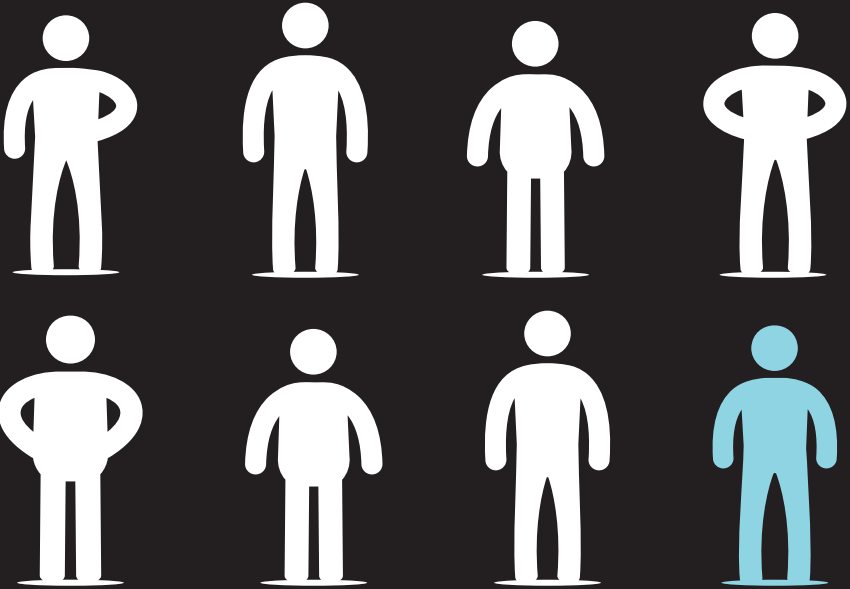


Pukka Bath small print....

And now for the small print... Any views or opinions submitted by contributors or advertisers are those of the authors only and do not necessarily reflect the views or opinions of Pukka Bath or its employees. The publisher, editors and authors accept no responsibility in respect of any advice, products or services which may be advertised or referred to in this issue. Neither the publisher, editors or authors accept, and hereby disclaim, any liability for loss, damage or expenses arising from any errors, omissions, misstatements or mistakes in any such advertisements, references or articles contained within this publication. No part of Pukka Bath may be reproduced in any form or by any means, either wholly or in part, without the written permission of the publisher or other owner of the copyright of the material. This publication must not be used for marketing purposes and as such no marketing representations should be made to Pukka Bath or our advertisers or contributors. Pukka Bath reserves the right to decide who will advertise in our publication.

1 IN 8 MEN WILL GET PROSTATE CANCER

Early diagnosis saves lives.



Speak to our Specialist Nurses

0800 074 8383*

prostatecanceruk.org



PROSTATE CANCER UK



Check your risk of
prostate cancer
in 30 seconds.

prostatecanceruk.org/risk8

Statistics are for men in the UK

Call our Specialist Nurses from Mon to Fri 9am - 5pm, Wed 10am - 5pm

*Calls are recorded for training purposes only.

Confidentiality is maintained between callers and Prostate Cancer UK.

Prostate Cancer UK is a registered charity in England and Wales (1005541)
and in Scotland (SC039332). Registered company number 02653887.

MEN4/AUG23 7147

NOAD Roofing

BATH'S PREMIER ROOFING & LEAD SPECIALISTS

“ Noad Roofing are professional from start to finish. They did some repairs to my roof and reconstructed a badly damaged fascia, including remoulding the original decorative finish ”

Ruth in Bath

SCAN TO BOOK



Tile & Slate Roofs



Flat Roofs



Leadwork



Fascias & Soffits



Guttering



Chimney Repairs



Velux Windows



Listed Buildings

CALL US ON 01225 982761
www.noadroofing.com