

Free
copy

Inside our June magazine, we have our amazing
advertisers offering services for you and your home, a
free draw for tickets to the Bath Festival of Motoring
& Music, our What's On, Quiz, Wordsearch and much,
much more

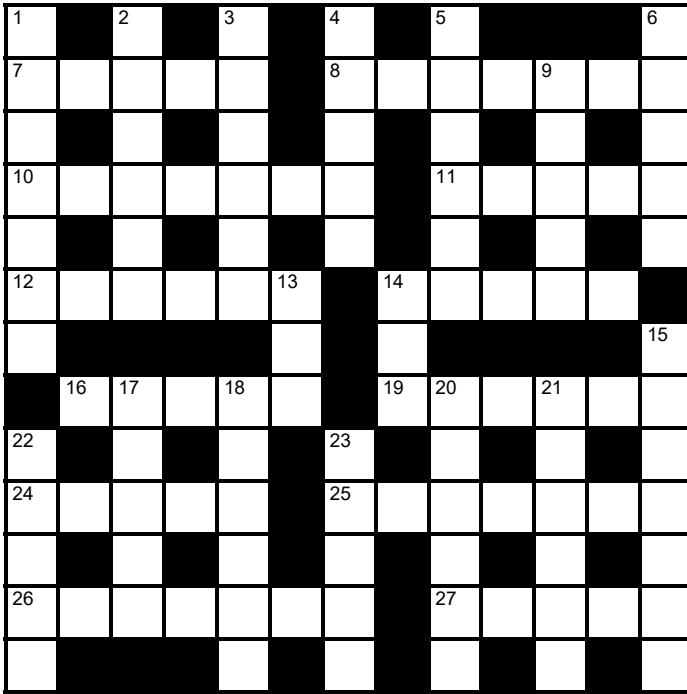
Hello June



pukka Bath



Crossword



Across

7 They can be common or proper (5)

8 House clearer (7)

10 Most common TV or radio broadcast (3,4)

11 Run off (3,2)

12 Like old videos (6)

14 Wide scarf (5)

16 Oliver Twist's fence (5)

19 Pines (6)

24 Arranged in stacks (5)

25 Machine-like (7)

26 Unruly SAS well out of it (7)

27 Electrical rectifier (5)

Down

1 In the limelight (2,5)

2 Archimedes' shout of triumph (6)

3 In the wake (6)

4 Roof support (5)

5 Charm (6)

6 Banal (5)

9 Period of watchfulness (5)

13 Hankering (3)

14 Wily (3)

15 Super excited (7)

17 Permit (5)

18 Heavily

committed (2,4)

20 Personify (6)

21 Sines and tangents, for example (6)

22 Express words by letters (5)

23 Destroy (5)

Solution on page 24

Est. 1997

Right at your feet

Quality carpet and flooring
curtains and blinds

Since we were established in 1997, our quality carpet ranges, affordable prices and outstanding service have made us the first-choice carpet and flooring suppliers and fitters throughout Bath and Somerset.

We supply and fit carpets and flooring for domestic and commercial customers alike and we now stock luxury curtains and blinds so you can complete your new look.



Visit our Bath showroom in Weston Village and meet us today.

Opening times: Mon-Fri: 9.00am-5.00pm.
Sat: 9.00am-1.00pm. Sun, Bank Hols: Closed.



36-37 High Street, Weston Village, Bath BA1 4BX
01225 424474 • sales@rightatyourfeet.co.uk

rightatyourfeetbath.co.uk



“I didn’t realise how much I’d stopped hearing...”

It’s something many people say after having their ears cleared professionally. Often, the change is so gradual that you don’t notice it happening; turning the TV up a little more, asking people to repeat themselves, or feeling slightly “blocked” without quite knowing why.



**Bath
Hearing
Services**

Ear wax is completely natural and plays an important role in protecting our ears, but sometimes it can build up and cause problems. It may affect your hearing, interfere with hearing aids, or even make symptoms like tinnitus more noticeable. Some people also describe a feeling of fullness, discomfort, or even mild dizziness.

With most GP surgeries no longer offering ear wax removal, it’s not unusual for people to try to manage it themselves. Cotton buds might seem like a quick fix, but they often push wax further in, exacerbating the problem.

That’s where professional care makes all the difference.

Microsuction is widely regarded as the gold standard for ear wax removal and is commonly used by ENT specialists. The procedure involves using a fine, sterile suction device, guided under magnification, to gently and precisely remove wax from the ear canal. It’s quick and typically painless; for many, the improvement in hearing is immediate.

Bath Hearing Services, run by local audiologist Amy Gault, offers a friendly and professional service right here in the community. With over 10 years of experience in audiology, Amy has helped hundreds of people improve their hearing and relieve symptoms of excess ear wax, through expert care and advice. She is fully insured, registered with the HCPC (Health and Care Professions Council), and a member of the British Society of Hearing Aid Audiologists (BSHAA).



Clinics take place at The Hub in Mulberry Park, Combe Down, on Mondays and Wednesdays, with occasional weekend appointments. There is a lovely cafe downstairs where you can grab a light bite or cup of coffee before your appointment.

If you’ve noticed changes in your hearing, or simply want peace of mind, it might be time to get your ears checked.

“I received the best of care and attention. My case was diagnosed smoothly and efficiently. I am very grateful that Amy could fit me in quickly”, Bath resident, 5 star Google Review

You can book online at www.bathhearingervices.co.uk or call 07765 011261.

Problems with Ear Wax?

Reduced Hearing?

Discomfort?

Itchy Ears?

Tinnitus?



**Bath
Hearing
Services**

**Professional and Friendly
Ear Wax Removal**

HCPC Registered Audiologist and Member of BSHAA

Clinics at THE HUB, Mulberry Park,
Combe Down BA2 5BU
(appointment only)

To book or for further information
scan the QR code or call
07765 011 261



www.bathhearingervices.co.uk

LIGHTS! CAMERA! ACTION! :

120 Years of Cinemas and Films in Bath The Museum of Bath at Work is celebrating all things cinema!

- Find out about Bath's earliest cinemas before the First World War
- Explore the timeline history of cinemas in Bath and the surrounding area
- Learn about the people who worked there – projectionists, usherettes and managers
- What it was like to go to the cinema in years gone by and what did people go and see?
- On location: the films with scenes in Bath
- See the cinema memorabilia and other fun items on display Enjoy some nostalgia!
- Exhibition book with original research on sale
- Cinema-themed goodies on sale
- Programme of film screenings and talks

LIGHTS! CAMERA! ACTION!

120 Years of Cinemas and Films in Bath

Film Screenings and Talks

Check our website and Facebook page for updated details, times and tickets – more to be announced.

www.museumofbath.org www.facebook.com/6884848484

- 🎬 Sunday 17 May: Cinema Paradiso at Little Theatre Cinema
- 🎬 Thursday 28 May: The Smallest Show on Earth at the Museum
- 🎬 Friday 12 June: 80,000 Suspects of the Museum
- 🎬 Wednesday 24 June 18h: Bath Film Office of the Museum
- 🎬 Wednesday 8 July: Catch Us If You Can at the Museum
- 🎬 Saturday 22 August: Two And Two Makes Six at the Museum
- 🎬 Sunday 6 September: Rock Around The Clock at Woodcombe Social Club
- 🎬 Saturday 12 September: Persuasion at the Museum
- 🎬 Monday 14 September: Shorts & documentaries featuring Bath at the Museum
- 🎬 Saturday 19 September: Night At The Museum at the Museum
- 🎬 Saturday 24 October: Vintage children's animation tv shows at the Museum
- 🎬 Saturday 31 October: The Open Road at the Museum
- 🎬 Sunday 8 November: Battle of the Somme 1916 at Little Theatre Cinema
- 🎬 Saturday 16 November: Mystery film to be announced at the Museum

Buy the Book!

The Light Camera Action book is full of original research and fascinating stories about the history of cinemas in our area, with additional material not in the exhibition

Museum of Bath at Work Bath Industrial Heritage Trust Limited
A company limited by guarantee (02209894) and registered as a charity (800209)

What

EXHIBITION: LIGHTS! CAMERA! ACTION! : 120 years of Cinemas and Films in Bath

Where

MUSEUM OF BATH AT WORK Julian Road, Bath BA1 2RH

When

Saturday 9 May – Sunday 29 November 2026

Open every day Saturday 9 May–31 October and weekends in November

Opening hours: 10.30-17.00 (last admission 16.00)

Entry to the exhibition is included when you buy your Museum admission ticket



Beau Nash Picture House staff outing,
July 1923 (Bath Chronicle & Weekly
Gazette 14 July 1923)

LIGHTS! CAMERA! ACTION!

120 Years of Cinemas and Films in Bath

Saturday, 9 May – Sunday, 29 November 2026

Museum of Bath at Work
Julian Road, Bath BA1 2RH

We're celebrating all things cinema – probably the most significant cultural development of the 20th century.

- ★ Bath's earliest cinemas
- ★ Timeline history of cinemas in Bath and surrounding area
- ★ The people who worked there – projectionists, usherettes and managers
- ★ What it was like to go to the cinema in years gone by?
- ★ What did people go and see?
- ★ How films got made
- ★ On location: the films with scenes in Bath
- ★ And much more, with some fun items and memorabilia on display!

Open every day 9 May–31 October, and weekends in November
Opening hours: 10.30–17.00 (last admission 16.00)

Entry to the exhibition is included when you buy your Museum admission ticket

Museum of Bath at Work

Miller Kehoe

PAINTING & DECORATING

We are an experienced, family run decorating team providing professional and high quality painting and decorating services in Bath and the surrounding areas.

We carry out interior and exterior works to residential and commercial properties. No job too big or small.

Get in touch today for a free no obligation quote.

Contact Sean on 07377381612
Email sean@millerkehoedecorating.com



RJ Mitchell & Son

Heating, Air Conditioning & Plumbing

At RJ Mitchell & Son Ltd, we've been delivering expert heating and plumbing services to homes across Bath and the surrounding areas for **over 40 years**.

As a **family-run business**, we believe in doing things properly, with **honesty, reliability, and the highest standards of workmanship**. From boiler installations to central heating repairs, every job is completed with care and attention to detail, that's **the Mitchell way**.

Our Services:

- Large domestic Installations
- A full range of central heating services from the smallest radiator to a complete installation, or a simple boiler change
- Combination boilers
- Vented and unvented cylinder installation
- Boiler servicing and breakdown
- Domestic hot and cold systems
- Small works
- Air conditioning - small domestic

Contact us:

www.plumbersofbath.co.uk
info@plumbersofbath.co.uk
01225 424089
07771852751

Scan to
follow us on
Instagram



PLUMBERSOFBATH



WORCESTER
AECOM GROUP LIMITED

BOSCH

What's On, regular events

Mondays, 1.30pm-4pm. Whist Club, Saltford Hall, Wedmore Road, Saltford, Bristol BS31 3BY. A friendly club who love to play cards, first week free then £3 per week. Contact David on davidvgray13@outlook.com or 07900218226

Tuesdays 12.30 – 1.30pm FREE Feel Good Walks with Time Bank Plus. Take a step towards better health and wellbeing with our FREE weekly walks! Join us for a relaxed, sociable stroll around SW Bath (1-2 miles) and feel the benefits. Whether you're new to walking or just want to get out and about, it's the perfect opportunity to connect with others and boost your mood. No need to book. Meet at Time Bank Plus, 86 High Street, Twerton, BA2 1DE. For more info: <https://timebankplus.co.uk/wp/groups-2> 01225 442813 timebankplus@gmail.com

Wednesdays 12 – 2pm. Lunch Club in Twerton with Time Bank Plus. Join us for a delicious 2-course hot lunch and a chance to meet new friends at our welcoming Lunch Club in Twerton. Enjoy a tasty meal, fun activities, and great company every Wednesday. Your first lunch is FREE, and after that, it's only £6 for a hearty, home-cooked meal with plenty of social activities. For booking and more info: <https://timebankplus.co.uk/wp/groups-2> 01225 442813 timebankplus@gmail.com

Wednesdays 3 - 4.30pm FREE Yarn Craft activity group at Time Bank Plus. Join with others to crochet, knit, sew or just have a yarn. We have plenty of wool, knitting needles, crochet hooks etc. or bring your own. We also welcome anyone who is happy to share their skills and teach others. No need to book, just drop in to Time Bank Plus, 86 High Street, Twerton, BA2 1DE. For more info: <https://timebankplus.co.uk/wp/groups-2> 01225 442813 timebankplus@gmail.com

Thursdays: 10am-1pm. Bath Embroidery Group, Until 2nd July, Manvers Street Baptist Church Centre Bath. Come and join our friendly group of stitchers, All levels welcome. Tel. For more information 07909968730

Thursdays 10am – 12.30pm FREE Digital Drop-In at Timebank Plus. Free one to one tech help with your mobile phone, tablet, laptop etc. or for advice tackling IT issues. No need to book, just drop in to Time Bank Plus, 86 High Street, Twerton, BA2 1DE. For more info: <https://timebankplus.co.uk/wp/groups-2> 01225 442813 timebankplus@gmail.com

Thursdays 10 – 11am FREE online Creative Writing Group with Time Bank Plus. Unleash your creativity and discover the power of words in our FREE, thriving online Creative Writing group! Whether you're a seasoned writer or just starting out, our weekly Zoom sessions offer fun, inspiring exercises and prompts to get your imagination flowing. Come and explore new ideas, share your writing, and connect with fellow writers in a supportive, friendly environment. For booking and more info: <https://timebankplus.co.uk/wp/groups-2> 01225 442813 timebankplus@gmail.com

Fridays: We Get It is a Bath based charity offering support to anyone who has been diagnosed with any cancer or who is supporting someone with cancer. The friendly & informal Get Together is every Friday at Walcot House, 90B Walcot Street, Bath, BA1 5G between 10AM-11:30AM. You are very welcome to join us for a coffee and a chat any Friday. For more information see our website - wegetit.org.uk - or email us at together@wegetit.org.uk

Saturdays: Walk Bath is a free walking group which takes place every Saturday at 9am. We organise group walks here in the beautiful city of Bath each week and all participants donate to Shelter. www.walkbath.co.uk

Continued on page 18





NORTHAVON
BLINDS

Supplying all types of blinds

We make buying blinds from your home or business hassle-free. From quotes to fitting, enjoy seamless service & a three-year guarantee for your peace of mind.

☎ 01454 273133

✉ sales@northavonblinds.co.uk

🌐 northavonblinds.co.uk



Nigel Dando
JEWELLER & GOLDSMITH

WE BUY

Gold, Silver & Platinum in
any form or condition.

At the highest price in Bath.

Instant Payment.

Open

Wednesday to Friday 10.30am-3.30pm

Appointments advisable

Saturday 10am-1pm Appointment only



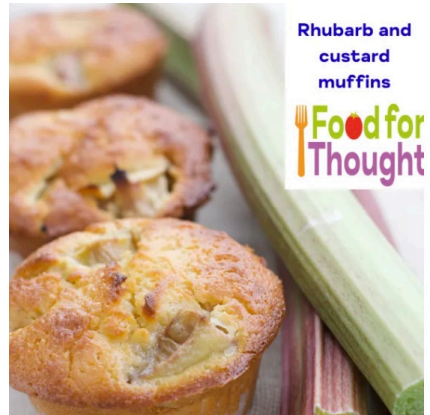
📍 01225 464013 • nigeldando.co.uk • 11 Pulteney Bridge, Bath BA2 4AY

Rhubarb and Custard Muffins

This makes around 12 but can be kept in an airtight container and eaten over a few days. You will need muffin or cupcake cases. Rhubarb is currently in season and if you cannot get hold of fresh rhubarb then frozen is also available in the supermarkets and completely fine to use. Tinned rhubarb is also great – it won't need cooking, but will need to be drained before using.

Ingredients

- 150g chopped rhubarb
- 150g plain flour
- 50g custard powder
- 2 tsp baking powder
- 150g sugar
- ½ teaspoon salt
- 150ml milk
- 100ml sunflower oil
- 2 small eggs or 1 large egg



Method

- Preheat the oven to 200 C.
- Gently cook chopped rhubarb in 1 tablespoon water and sugar to taste.
- Sift together flour, custard powder and baking powder. Add sugar and salt.
- Beat together milk, oil and eggs. Blend together egg mix and flour mix until smooth.
- Fold in rhubarb. Spoon into prepared muffin tray.
- Bake for 20-25 minutes.



The Preventative Care Company

Home care and support that helps you stay strong, independent, and in control.

We're the only care company that **proactively helps you need less of us** – by reducing, delaying, or avoiding the need for long-term care.

Our carers don't just support you day-to-day, they're trained to spot early signs of change.

Enjoy **peace of mind** knowing you're **supported today and prepared for tomorrow.**

“ Just twelve weeks on, I'm walking unaided, travelling confidently on buses and trains, and enjoying a new sense of freedom and independence.
Brian, 92, Bath, Client



Stay steady, stay safe. Scan to get your **free Fall Prevention Introductory Course** and build confidence with every step.

Abney & Baker • abneyandbaker.com • enquiries@abneyandbaker.com • 0333 043 4880



BATH'S PREMIER ROOFING & LEAD SPECIALISTS

“ Noad Roofing just completed work on my roof, and I am thrilled with the results! The team was professional, efficient, and the quality of their work was exceptional ”

Sally in Bath

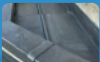
SCAN TO BOOK



Tile & Slate Roofs



Flat Roofs



Leadwork



Fascias & Soffits



Guttering



Chimney Repairs



Velux Windows



Listed Buildings

CALL US ON 01225 982761
www.noadroofing.com

G. MANNINGS

FUNERAL DIRECTORS

Independently Owned & Operated
106 North Road, Combe Down, Bath, BA2 5DJ



01225 833013

www.gmanningsfuneraldirectors.com
gmanningsfuneraldirectors@btconnect.com

Bath and District Group



Do you know someone who has Multiple Sclerosis (MS)?

We are here to support you and your loved ones to live well with MS. Whether you have MS or care about someone who does, join our group to connect with other people from the community and share experiences. We don't want anyone to face MS alone.

From information on local services to opportunities to meet others in the area and more, our group is part of a large network of MS Society groups situated across the UK.

We run a local telephone helpline, publish a monthly newsletter, help with transport (we operate our own minibus) as well as providing some ad hoc financial support.

We also hold regular exercise classes and arrange group meals, outings and hold a monthly social.

Seated Exercise

Every Tuesday from 13.00 to 14.00 at St Andrew's Hall, Hawthorn Grove, Combe Down, BA2 5QA

Every Tuesday from 10.40 and 11.40 at Somerdale Pavilion, Keynsham, BS31 2FW

Monthly Social

The last Friday of every month from 11.00 to 15.00 at Odd Down Sports Ground, Chelwood Drive, Bath, BA2 2PR

Can you help?

We are looking for volunteer drivers and/or passenger assistants to join our small friendly team. We collect MS members from their homes and take them to their exercise class, therapy sessions and social events. The role is a little physical as you'll need to use wheelchair fixings in the minibus and handle manual wheelchairs. Or have your own car to pick up members and take them to events?



**If any of the above appeals to you please call us on 08000 665 355
or email bath@mssociety.org.uk
www.mssociety.org.uk/bath www.facebook.com/MSSocietyBath**

If you would like to receive MS Society Bath and District monthly newsletter, please use this link and enter your details: <https://signup.mssociety.org.uk/page/21388/-/1>

**It's a really upbeat group so why don't you get in contact
and come and see us to see what it's all about.**

Specialist home based physiotherapy for the over 65s

- › Falls prevention and rehabilitation
- › General aches and pains
- › Pre and post surgery rehabilitation
- › Neurological conditions (i.e. stroke)
- › Cardiac & pulmonary rehabilitation
- › Arthritis and osteoporosis
- › Post hospital/illness rehabilitation
- › Home environment assessment



S.R.J Carpentry All aspects of carpentry



**Kitchens,
fitted Cupboards and Wardrobes
Fencing and Gates
Interior and Exterior Doors
Purpose made Joinery,
Flooring
and much more**

for more details visit
www.srjcarpentry.com
or call M: 07970143338

T:01761 752575

E:simonrjones21@hotmail.co.uk

WANTED Records/CD's/Music Memorabilia

By Private Collector
Collections Bought

07590 359817

PHYSIOTHERAPY Home Visits For Older Adults

- Would you like to improve your strength and balance?
- Have you lost confidence after a fall?
- Would you benefit from rehabilitation support after a stay in hospital?

Private Physiotherapy sessions available
in the comfort of your own home



Contact Jane for more information
07734 296636

jane@quantahealth.co.uk

www.physiohomevisitbath.co.uk

Chartered Physiotherapist | 15+ years' experience | HCPC registered



Body Focus Massage

By Julia

Julia Brown
NFTJ

Juliabodyfocusmassage.co.uk

Massage Practitioner
07398616335

Julia.BFM@outlook.com

Home visits by arrangement



UK Health
Security
Agency

Enjoy the outdoors but 'be tick aware'

Ticks can transmit microbes that cause infections such as Lyme disease or tick borne encephalitis.

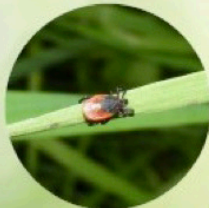
Being tick aware by using the following information can help to reduce the chance of tick bites and of being infected:

- you could be exposed to ticks whenever you spend time outdoors, including when in your garden or the local park
- ticks mainly attach to animals, but sometimes they may bite you, your family or your pets
- you can reduce the chance of tick bites by walking on clearly defined paths, using insect repellent and performing **regular tick checks**
- ticks can bite anywhere on the body, including in your hair. More than one tick can be attached to you at a time
- some tick bites can result in infection, so it is important to remove ticks safely and as quickly as possible
- the safest way to remove a tick is by using a pair of **fine-tipped tweezers** or a tick removal tool
- if you begin to feel unwell with flu-like symptoms, persistent headache, confusion or develop a spreading circular red rash (which usually appears within 1 to 4 weeks after being bitten), **contact your GP or NHS 111 promptly**. Mention if you were bitten by a tick or have recently spent time outdoors

Tick sizes compared to a one penny coin



Tick in the environment



Tick attached to skin



Lyme disease bullseye rash



Tick found under hair



For more information, search for the phrases 'ticks' and 'Lyme disease' on these websites:

www.nhs.uk www.gov.uk www.nice.org.uk/guidance

**Toe nail
cutting?
Corns?**



Hard skin?

Finger nail trimming
service available

Home visits, PPE worn

Call: 01225 351646

Mobile: 0777 308 2163

Julia George
MCFHP MAFHP
Foot Health Professional



MEMBER OF
THE SMAE INSTITUTE

**I HEAR EAR CARE
EAR WAX REMOVAL**

Home visit available
Ear health check

WIDCOMBE SURGERY,
3-4 Widcombe Parade,
Bath, BA2 4JT

Microsuction
Video otoscopy
Ear plugs
Irrigation
Hearing tests



Registered H A
Audiologist
Health and Care
Professions Council

BOOK NOW

**EXPERT
CARE**

hcpc

drvirginiacollis@icloud.com

07517 400893



**Charity Race Day
@ Bath Racecourse**

Come and join us for a fantastic
day of racing and fundraising at
Bath Racecourse, where thrilling
racing meets a great cause.

SCAN ME



Tickets:

General Admission = £10pp
Hospitality = £75pp

Bath Racecourse are making a donation
for each General Admission ticket sold.

**Wednesday
15 July 2026**

12.30-5pm

Bath Racecourse
Lansdown • Bath
BA1 9BU



Registered Charity No. 1144097

			4	1			5
		5	2				1
3	8						
					5		
					7	9	4
7	2		3			1	8
		3	9	6			
			5				
				8	9	2	

**Sudoku,
solution on page 30**



THREE CHEERS FOR LOCAL READ EASY GROUP



Read Easy Bath had three reasons to celebrate recently. Two new readers received certificates on completing their reading journey - and the Midsomer Norton-based Sperring Charity made a generous £2500 donation.

Read Easy Bath Team Leader Caroline Cronin explains: 'Read Easy Bath is a voluntary group affiliated to Read Easy UK. We offer free, confidential, one-to-one coaching with trained volunteer coaches for adults who, for any number of reasons, can't read or have limited reading ability. We passionately believe that reading changes lives and in the National Year of Reading, there's never been a better time to learn or improve!'

Roger (58) never mastered reading at school and didn't have the confidence to ask. Having worked through the five stages of the Read Easy programme with his coach, Roger says: 'I've loved learning to read. I now know how to sound out words and am buying myself books and going to the library.'

Called a 'model pupil' by his coach Steph Perrett, Roger has wide interests. He completes Wordsearch puzzles and hopes to enrol on an IT course.

Also graduating is Gary (29). His learning difficulty made it hard to concentrate at school, but with the help of the Swallow charity, he learnt cooking and counter skills at their café in The Hive, Peasedown St John. Knowing his inability to read was holding him back, he jumped at the chance to learn.

'I was nervous at the start,' he says, 'but my coach was so friendly and kind, I soon got going!' Gary's coach Debbie Wilkes says: 'I'm so proud of Gary's achievements, motivation and focus. Watching him learn and grow has been the most amazing thing - we have changed the course of his future.'

Trustee George Persson of the Sperring Charity adds: 'We were impressed by the Read Easy Bath's passion for the work it does in the area and wanted to provide support.'

But the last word goes to Roger. 'I feel like a reader now. I'm much more confident. I say to myself "I can do it!"'

If you know someone who would like to learn to read please contact:

Sarah at bath@readeasy.org.uk

or Alison - bathcoordinator3@readeasy.org.uk or 07593 187293

To find out more about volunteering as a coach, please contact:

Juliet on bathrecruiter@readeasy.org.uk

If you can offer us a venue for coaching (two sessions a week) especially in Peasedown or Radstock, please contact Alison - bathcoordinator3@readeasy.org.uk or 07593 187293.

Check out Read Easy Bath on Facebook or Instagram





T GEORGE
L I M I T E D

Building & Restoration

We undertake all kinds of building work including Extensions,
Renovations and Structural Alterations.
Modern, Period and Listed buildings.

- ▷ Restoration & Refurbishment
- ▷ Extensions
- ▷ Conversions
- ▷ Stone work
- ▷ Porches
- ▷ Carpentry
- ▷ Joinery
- ▷ Oak Framing
- ▷ New Garages
- ▷ Garage conversions



**For a free quote call Tom George
on 07800 546 707**

www.tgeorge.co.uk
email: tom@tgeorge.co.uk



T GEORGE
L I M I T E D

Follow us:



@tgeorgeltd

What's On (continued)

3rd June, Wednesday, 8.45am-12noon. Barney's Community Cafe. St Barnabas Church, Mount View, Southdown. Yummy cakes and drinks, no set costs!

4th June, Thursday, 2.30pm - 4 pm. Bear Flat Community Tea. Community Hall, Bruton Avenue. Call in for company, conversation, a hot drink with cream tea and home made cakes. No set cost - any donation for Charity welcome.

4th June, Thursday, 7.30pm - 9.30pm, Bath Railway Society, A Short AGM followed by a selection of illustrated talks by members on the Sao Paulo Railway Brazil, Historical Bath by Train, China before the QJs and A Driver's View. Museum Of Bath At Work, Julian Road, Bath BA1 2RH. All Welcome. Visitors £5.00. Refreshments Available. For further information, see website - www.bathrailwaysociety.co.uk

9th June, Tuesday, 10.30am Beaufort Guild, Pultney Room, Manvers Street Baptist Church. NaturalHealth Foods by Inge Donnell

10th June, Wednesday, 8.45am-12noon. Barney's Community Cafe. St Barnabas Church, Mount View, Southdown. Yummy cakes and drinks, no set costs!

11th June, Thursday, 3-4.30pm Welsh conversation group, Burdall's Yard, London Road, Bath. Organiser Catherine Dhanjal. Call Catherine on 07941669925 or follow <https://www.facebook.com/CymraegBrysteCaerfaddon>

12th June, Friday, 6-9pm. Articulate Craft Group Organisation, Hillside Hall, Hillside Road, Oldfield Park, Bath, BA2 3NX. articulatebath.com, Prebook.

15th June, Monday, New Moon

17th June, Wednesday, 8.45am-12noon. Barney's Community Cafe. St Barnabas Church, Mount View, Southdown. Yummy cakes and drinks, no set costs!

19th June, Friday, 3.15-5.15, Lit Fest - Celebrating The Year of Reading. Mulberry Park Hub, Combe Down. Free! A LifeLong Learning (3Ls) initiative. A variety of literature related activities will be happening in and around Mulberry Park Hub and the school at Combe Down. Something for all ages. Please come and enjoy. •Talk with local, nationally acclaimed professional writers •Enter your own creative writing in a competition with sections for all ages and win a valuable prize. (application form will be posted). • View Exhibitions. • Watch Performances. • Find out about the book club. • Share your favourite poem. • Free books. • And more. Enquiries at: enquiries@mphub.co.uk Updates: Facebook and Instagram (check regularly for added events and details.)

20th June, Saturday, 9.30am - 12.30pm. Bear Flat Community Market with Share and Repair Workshop. Community Hall, Bruton Avenue. Stalls selling a variety of locally made artisan bread and pastries, preserves, jewellery, cards, gifts and plants. Bring along your items to be repaired whilst enjoying a hot drink with home made cake and savouries to eat in or take away. Contact details : helenscamell@gmail.com

21st June, Sunday, 9.24am. Summer Solstice.

21st June, Sunday, Fathers Day

24th June, Wednesday, Midsummer Day

24th June, Wednesday, 8.45am-12noon. Barney's Community Cafe. St Barnabas Church, Mount View, Southdown. Yummy cakes and drinks, no set costs!

26th June, Friday, 6-9pm. Articulate Craft Group Organisation, Hillside Hall, Hillside Road, Oldfield Park, Bath, BA2 3NX. articulatebath.com, Prebook.

30th June, Tuesday, Full Moon





Companions Who Care

SUPPORT WITH A HELPING HAND

OUR SERVICES INCLUDE:

- Home help and light housework
- Laundry and bed changing
- Shopping and meal preparation
- Trips out / help to attend appointments
- Support with interests
- Dementia support
- Hospital discharge support
- Welfare checks / Medication prompting
- Help with admin / IT support
- Respite breaks for carers
- Dog walking / pet care
- Companionship / Just being there



CALL 01225 308141

EMAIL hello@companionswhocare.co.uk

www.companionswhocare.co.uk

BATH'S CLASSIC CAR SHOW IS BACK THIS YEAR

The Bath Festival of Motoring and Music is confirmed as returning on the last weekend in June, promising an exciting day out for enthusiasts and families alike



The Bath Festival of Motoring and Music is taking place on Saturday, 27 June and Sunday, 28 June. The event will feature hundreds of remarkable vehicles spanning a century of motoring history, from classic to modern supercars. The event will be held on the fields at Walcot Rugby Club, opposite Lansdown Park and Ride.

The Rotary Club of Bath is once again organising the festival, with support from Bath Recreation Ltd. All proceeds will be donated to local charities, with main beneficiaries being Bath and Wiltshire Air Ambulance, Freewheelers Blood Bikes, and Glasshouse Academy, all supporting vital services for the community.

Rod Davies from the Rotary Club, shared his excitement about the event's return:

“After a year's break, we are delighted to be back, bigger and better than ever. The Festival will have something for everyone, young and old, petrol-head, electric car enthusiast, nostalgia buff or supercar fan. It will be a great day out for the whole family.”



Attendees can look forward to getting up close and personal with a wide range of vehicles, from cutting-edge supercars to classic vehicles from every decade dating back to the mid-20th century. The show will also feature a range of iconic motorbikes, both British and international, offering something for all motoring enthusiasts.



This year's show, now named the Bath Festival of Motoring and Music, will boast even more live music performances from a range of local bands and musical groups, across two dedicated stages throughout the weekend.

Visitors will also be able to enjoy a wide selection of local refreshment stalls and browse a variety of fascinating exhibitor stands, and free parking is provided on site.



Tickets are available online via the Bath Festival of Motoring and Music 2026
website: bathfestivalofmotoring.com

Festival Hours:

Saturday 27 June: 10.00am – 6.00pm

Sunday 28 June: 10.00am-4.00pm

Festival Location:

Walcot Rugby Club, Albert Field, Lansdown, Bath BA1 9BJ
(opposite the Lansdown Park and Ride)





How to enter free draw. Please see Terms & Conditions below **

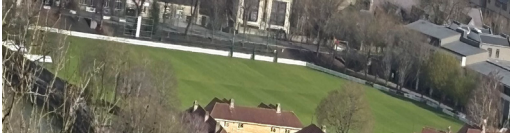
.... three lucky readers can each win one family ticket to the Bath Festival of Motoring and music. for Saturday 27 June 2026 only. Each ticket allows entry for two adults and up to three children (up to age 16).

Simply send your name, address and contact telephone number via email to pukkacompetition@live.co.uk.

Closing date Thursday 18th June 2026, 5pm.



**Free draw terms and conditions...Entrants must be aged 18 or over. Proof of identity and age may be required. Only one entry per person. Use of a false name or address will result in disqualification. All entries must be made directly by the person entering the draw. No bulk entries will be accepted. Proof of sending an entry shall not constitute proof of receipt. No responsibility is accepted for entries that are lost, misdirected, late, damaged or illegible, nor for any associated costs. The prize is as stated, is not transferrable to another individual and no cash or other alternative will be offered. Reasonable efforts will be made to contact our winner. Failure to respond and/or provide an address for delivery, or failure to meet the eligibility requirements may result in forfeiture of the prize. If they cannot be contacted, or are unable to comply with these terms and conditions, Pukka Bath reserves the right to offer the prize to the next eligible entrant drawn at random. The winners will be drawn at random from all valid entries, based on the criteria set out and no correspondence will be entered into over the draw.



1. Where are we and which sport is played here?



2. How many days are there in June?

3. Do any centipedes have a hundred or more legs?

5. Which dried fruit forms the spots in the pudding, Spotted Dick?

4. What does SW stand for on a radio?

7. In theatre, which stage direction is Latin for 'he goes out'?

6. The mineral azurite is mined as an ore of which metal?

9. In transport what does the H stand for in HGV?

8. BRL is the currency of which country?

10. The Celtic Sea is an inlet of which Ocean?

11. Which flowers share their name with a Cadbury's chocolate assortment?

12. In June 1936, *Gone With the Wind* was first published. Who was the author?

13. In June 1949 George Orwell published his political novel of life under a totalitarian government. What was it called?

14. The first non British player to win the Men's Singles title did so in 1907. What nationality was he?

15. How many stumps are there on a set of wickets?

16. Which form of transport is created when you mix the cocktail brandy, triple-sec and lemon juice?

17. Which cold current named after a region of Canada, flows south from the Arctic?

Answers on page 30

Make the most of the summer with local charity Share and Repair!



Share and Repair has a Library of Things with over 800 items available to borrow instead of buy, saving you money and space! Booked a festival or fancy a barbecue? Would you like to host an evening event or play some outdoor games? Check out our catalogue and see what you can borrow for just a few pounds a week.

Southdown Repair Cafe is on at the Methodist Church Centre, BA2 1NJ on the first Saturday of the month, Weston Repair Cafe is on the second Saturday at the Weston Hub BA1 4EH, and Bear Flat Repair Cafe is on the third Saturday of the month at Bruton Community Hall, BA2 4QJ. No need to book, just drop by if you want something repaired, but bear in mind the earlier the better and no new repairs will be accepted half an hour before they close.

Find out all about our services on our website: www.shareandrepair.org.uk

120 not out! More than a century of nursing work celebrated at the RUH

Cast your mind back to 1996 – the national turmoil caused by Take That announcing they are splitting up, Trainspotting is released in cinemas, the Spice Girls release their debut single Wannabe and England hosts Euro 96. Meanwhile, in Bath a new group of trainee nurses are starting their careers at the Royal United Hospitals Bath NHS Foundation Trust.



Four of the remaining 'Class of '96' met to each celebrate an incredible 30 years of working at the Trust and to look back on their time at the hospital. The quartet were Dana Di.Iulio, Infection Prevention and Control Nurse; Jackie Robinson, Senior Sister in the Urology department; Toni Salamon, Lead Surgical Nurse Practitioner and Nadine Geary, Recovery Nurse. The four were all part of the same set when they carried out their training more than 30 years ago at the RUH. They all took a Common Foundation in Nursing Programme, before moving on to their specialist areas.

So what is the biggest change they've seen at the RUH during their career? "Technology definitely", said Jackie. "It's come such a long way and has improved the care we can provide to our patients and helped the staff too." Dana added: "The size of the hospital too. It's grown a lot over the years and we now look after more patients than ever before." They all agreed that that the Covid pandemic had been the most challenging period of their careers. "We saw things that we'd never seen before," said Nadine. "It was a really tough time both emotionally and physically." Dana added: "Working in Infection Prevention meant that a lot of people came to us for advice, so keeping on top of all the latest guidance was a real challenge." "For me, the hardest thing was seeing how it affected our patients' relatives and loved ones, who couldn't visit our wards in person," said Jackie. Toni said: "Although it was a really tough time, the camaraderie between all the staff was incredible. We all came together to support and look out for each other." After 30 years at the RUH, what is the appeal of continuing to work at the hospital? Toni said: "It's the people. It's such a friendly place, it really is a pleasure to work here."

"It really does feel like a family," said Jackie. "Everyone says hello when you're walking down the corridor. The location of the hospital is good too – Bath is a lovely city and we're lucky to have so much green space around the hospital." Nadine said: "There are also lots of opportunities to further your career – you really don't need to look anywhere else." "There really is something special about this place," added Dana. "I can't imagine working anywhere else."



Squirrels

Wild about the outdoors? So are we.

Squirrels. The newest branch of the Scouts family tree. Where 4-6 year olds can join in too.

This is an age when minds are fizzing, when energy and curiosity levels are sky high, when little lives are full of wow and wonder.

Bath Scouts are looking to open a new Squirrel Drey in the centre of Bath on a Saturday morning.

To register your interest please send us an email with your child's name, age and put 'Squirrels' in the email. We will then be in touch shortly with the next steps.

join@bathscouts.org

[bathscouts.org](https://www.bathscouts.org)

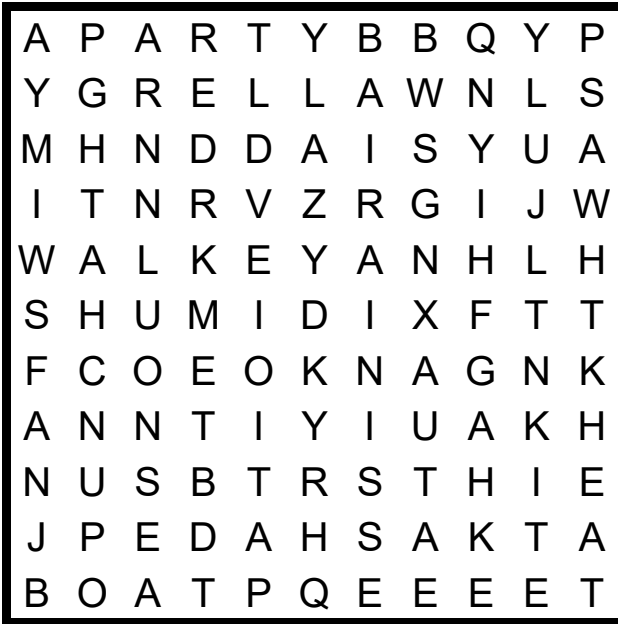
#SkillsForLife

Copyright © 2021 Scouts Registered Charity numbers 306101 (England and Wales) and SC038437 (Scotland). Photography by Tom Hull.




Scouts
City Of Bath

Wordsearch



Can you find the Summer terms listed below,
in the wordsearch above?

Allergy

Ant

BBQ

Bikini

Boat

Daisy

Easy

Fair

Fan

Heat

Hike

Hot

Humid

July

June

Kite

Lawn

Lazy

Light

Party

Patio

Punch

Rain

Sand

Sea

Shade

Sun

Swim

Tan

Tent

Thunder

Walk

Wasp

Solution on page 30

Have you seen this insect?

Yellow-legged hornet (aka Asian hornet) *Vespa velutina*



What is it?

A highly aggressive predator of native insects that poses a significant threat to honey bees and other pollinators. Originally from Asia, in 2004 this invasive non-native species was accidentally introduced to France where it has spread rapidly and into neighbouring countries. Since 2016 a number of sightings have been recorded in the UK.



Slightly smaller than the native European hornet. May be confused with other species, shown below in actual size for comparison.



Yellow-legged hornet



European hornet



Median wasp



Hornet mimic hoverfly



Woodwasp

Where might I see it?

May be seen on flowering plants, around beehives, around rotting / fermenting fruit and protein, and at street markets attracted by sweet fruit and fish stalls. Active February to November across England and Wales.

This insect stings, do not disturb an active nest.

Please report sightings immediately with a photo:

- with the iPhone and Android recording app: **Asian Hornet Watch**
- online at: nonnativespecies.org/asianhornet
- by email: alertnonnative@ceh.ac.uk

Find out more and report a sighting:



For more information on invasive non-native species visit: nonnativespecies.org

The 1926 General Strike in and Around Bath – An Exhibition

Museum of Bath at Work, Julian Road, Bath BA1 2RH

Until Thursday 25th June 2026

MINERS' MASS MEETING ON THE SAWCLOSE, BATH.



A special exhibition at the Museum of Bath at Work to commemorate the centenary of the General Strike will open at the city's museum of social and commercial history in May. The exhibition is just one throughout the UK and is part of General Strike 100 organised by General Federation of Trade Unions.

The General Strike was called by the Trades Union Council in 1926 in support of striking coal miners and was national.

On May 3rd, 1926, 2,500 workers went on strike in Bath. The local motivation was the conditions of the North Somerset miners around Radstock, and volunteers helped raise funds for the deprivation suffered by miners' families as well as keeping Bath supplied with provisions. Find out about the national actions by government as well as the local day-by-day events during the nine days of the strike.

Alongside the exhibition we will have talks by local historian David Williamson and a presentation by Trevor Turpin, exhibition curator. Trade Unionist Dave Chapple will be launching his new book on the Somerset Miners. There is also a book *Standfast & Solid* about the strike by Trevor to accompany the exhibition.

WELLOW WAY RUNNERS SOAK UP SUNSHINE – AND SUCCESS!

Sunshine, smiles and a splash of colour made this year's Wellow Way 10K, 5K and Kids' Colour Run a day to remember as the popular village event returned bigger and brighter than ever.

The seventh year Wellow Way 10K saw record participation, from seasoned runners to firsttime entrants taking on a new challenge. In total, 230 runners ran the 10K and 5K courses — the latter an 'starter run' for families to run together.

The Kids' Colour Run was a highlight, with around 130 youngsters taking part. In a first this year, parents and siblings joined teachers from St Julian's School to throw colour powder – great fun had by all! Tom Craggs, Head of Endurance at UK Athletics, started off the 5K and 10K races while – perhaps no surprise - his wife, Georgia Wood, stormed to a new women's course record in 45:20. The men's winner, Joshua Harris, finished in under 40 minutes.

Runners were warmed up and race-ready thanks to Sam Eyles from South West Fitness. New this year, therapists Pippa and Rebecca from Circus Health offered complimentary lowerleg massages at the finish — a welcome treat for tired legs. Refuelling came courtesy of The Treat Hub for tea and coffee, the Fox & Badger provided a BBQ, and St Julian's PTA ran their ever-popular cake stall.

Event organiser Lisa Hunt paid tribute to the army of volunteers and supporters: "This event simply wouldn't happen without our amazing volunteers and generous sponsors — it's a real team effort and something the whole village can be proud of."

Thanks to that collective effort, the day raised around £5,000 for local causes, including Wellow Recreation Ground, the Parlour Shop, St Julian's Church and St Julian's School PTA. The organisers also extend grateful thanks to sponsors Cobb Farr, Xpedite, Leakey Clean, T. P. Richards and Bath Property Group.

With the sun shining and community spirit high, the Wellow Way 10K once again proved why it is such a special event. Keep an eye out for next year's date!



Photo 7 (by Ian Hargreaves) - Pippa Seaton (left) and Rebecca Knubley (right) from Circus Health

If you would like to advertise your business or event please get in touch with us
by emailing: pukkabath@live.co.uk
We look forward to hearing from you

Wordsearch solution



Sudoku solution

9	7	2	8	4	1	3	6	5
6	4	5	2	9	3	8	7	1
3	8	1	6	5	7	2	4	9
1	6	4	7	8	9	5	3	2
5	3	8	1	2	6	7	9	4
7	2	9	4	3	5	6	1	8
8	1	3	9	6	2	4	5	7
2	9	6	5	7	4	1	8	3
4	5	7	3	1	8	9	2	6

Pukka Bath Quiz answers

1. Bath Cricket Club & Cricket
2. 30
3. Many centipede species have well over 100 legs
4. Short wave
5. Traditionally, currants
6. Copper
7. Exit
8. Brazil
9. Heavy
10. Atlantic Ocean
11. Roses
12. Margaret Mitchell
13. Nineteen Eighty-Four
14. Australian
15. 3
16. Sidecar (cocktail)
17. Labrador Current

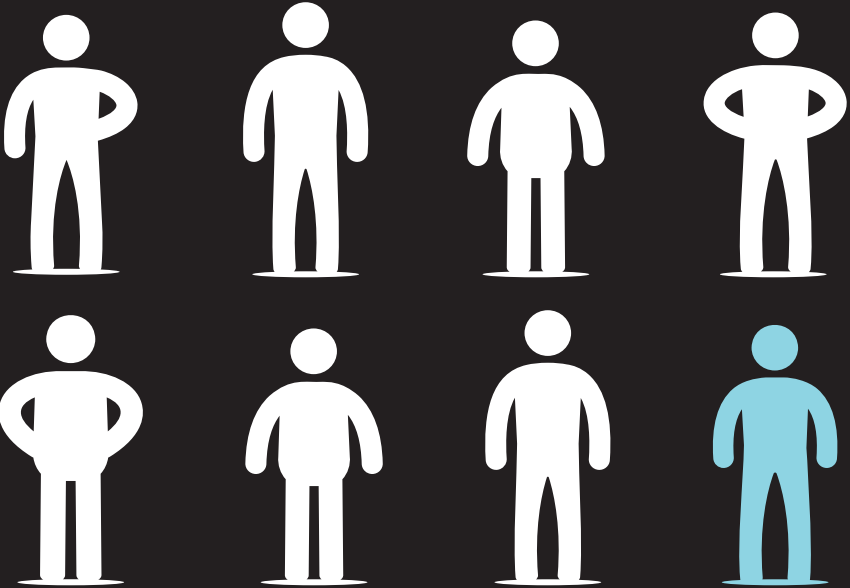


Pukka Bath small print....

And now for the small print... Any views or opinions submitted by contributors or advertisers are those of the authors only and do not necessarily reflect the views or opinions of Pukka Bath or its employees. The publisher, editors and authors accept no responsibility in respect of any advice, products or services which may be advertised or referred to in this issue. Neither the publisher, editors or authors accept, and hereby disclaim, any liability for loss, damage or expenses arising from any errors, omissions, misstatements or mistakes in any such advertisements, references or articles contained within this publication. No part of Pukka Bath may be reproduced in any form or by any means, either wholly or in part, without the written permission of the publisher or other owner of the copyright of the material. This publication must not be used for marketing purposes and as such no marketing representations should be made to Pukka Bath or our advertisers or contributors. Pukka Bath reserves the right to decide who will advertise in our publication.

1 IN 8 MEN WILL GET PROSTATE CANCER

Early diagnosis saves lives.



Speak to our Specialist Nurses

0800 074 8383*

prostatecanceruk.org



PROSTATE CANCER UK



Check your risk of
prostate cancer
in 30 seconds.

prostatecanceruk.org/risk8

Statistics are for men in the UK

Call our Specialist Nurses from Mon to Fri 9am - 5pm, Wed 10am - 5pm

*Calls are recorded for training purposes only.

Confidentiality is maintained between callers and Prostate Cancer UK.

Prostate Cancer UK is a registered charity in England and Wales (1005541)
and in Scotland (SC039332). Registered company number 02653887.

MEN4/AUG23 7147

Sash Window Restoration

- Draughtproofing
- Replacement & Repair of existing windows
- Replacement sash cords
- Casement windows



We manufacture all replacement joinery in house, enabling us to match your existing windows, giving us control over the construction quality and turnaround time.



**For a free quote, call Tom George on
07800546707**

www.tgeorge.co.uk

email: tom@tgeorge.co.uk

