

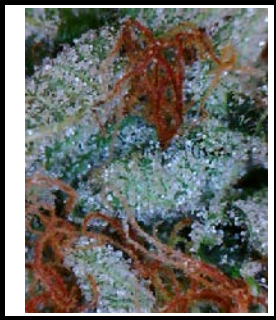


# Certificate of Analysis

Two Headed Turtle, LLC  
5900 Balcones Dr, Ste 100, Austin, TX 78731

Larry OG  
Flower, Fresh, Hemp Cannabis

Order# 1045  
Sample# 8765  
Sample Received: 01/30/2025  
Report Created: 01/31/2025  
Batch/Lot# n/a



## Summary

### Test

Potency  
Microbiological (Quantitative)  
Homogenization

### Date Tested

1/31/2025  
Not Tested  
1/31/2025

### Result

Tested  
N/A  
Tested

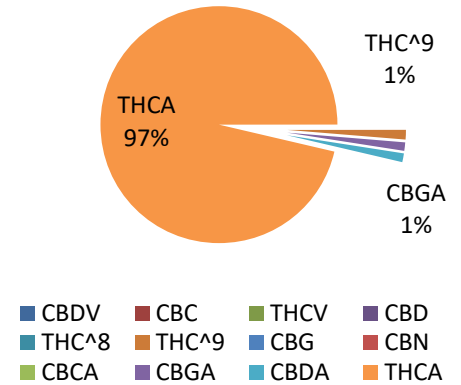
## Cannabinoids (ECL-LC-201)

This test method has been validated and performed according to the principles and measurements of ISO 17025:2015.

19.2513 %	0.235475 mg
Total THC	Total CBD

### Ratio of Cannabinoids

Analyte	LOQ (%)	Mass (%)	Mass (mg/g)
CBDV	0.08%	0.00%	0.0000 mg/g
CBC	0.08%	0.00%	0.0000 mg/g
THC-V	0.08%	0.00%	0.0000 mg/g
CBD	0.08%	0.00%	0.0000 mg/g
THC^8	0.08%	0.00%	0.0000 mg/g
THC^9	0.08%	0.29%	2.9360 mg/g
CBG	0.08%	0.00%	0.0000 mg/g
CBN	0.08%	0.00%	0.0000 mg/g
CBGA	0.08%	0.00%	0.0000 mg/g
CBDA	0.08%	0.27%	2.6850 mg/g
THCA	0.08%	21.62%	216.1653 mg/g
<b>Total</b>		<b>22.44%</b>	<b>224.3633 mg/g</b>



Unit Weight (grams) = 0.1

Total THC = THCa \* 0.877 + ^9-THC

Total CBD = CBDa \* 0.877 + CBD

LOQ = Limit of Quantitation; The reported result is based upon sample weight; unless otherwise stated all quality control samples performed within specifications established by the laboratory in accordance with Texas state law.

Measurement of Uncertainty (MOU) for ^9-THC is calculated to be +/- 0.05%

404 N Whitt Street, Unit 2  
Oakwood, TX 75855  
817-357-6582  
[www.ecltesting.com](http://www.ecltesting.com)

*Matthew O. Madison*

Matthew Madison  
President

ND = Not Detected; NR = Not Reported

This product has been tested by ECL Testing, LLC using valid testing methodologies and a quality system as required by state law. Values reported relate only to the product tested. ECL Testing, LLC makes no claims as to the efficacy, safety or other risks associated with any detected or non-detected levels of any compounds reported herein. This Certificate shall not be reproduced except in full, without the written approval of ECL Testing, LLC.