

**GLENN A. JONES, M.D.
MEMORIAL LIBRARY**
400 SOUTH PARISH AVENUE,
JOHNSTOWN, CO 80535

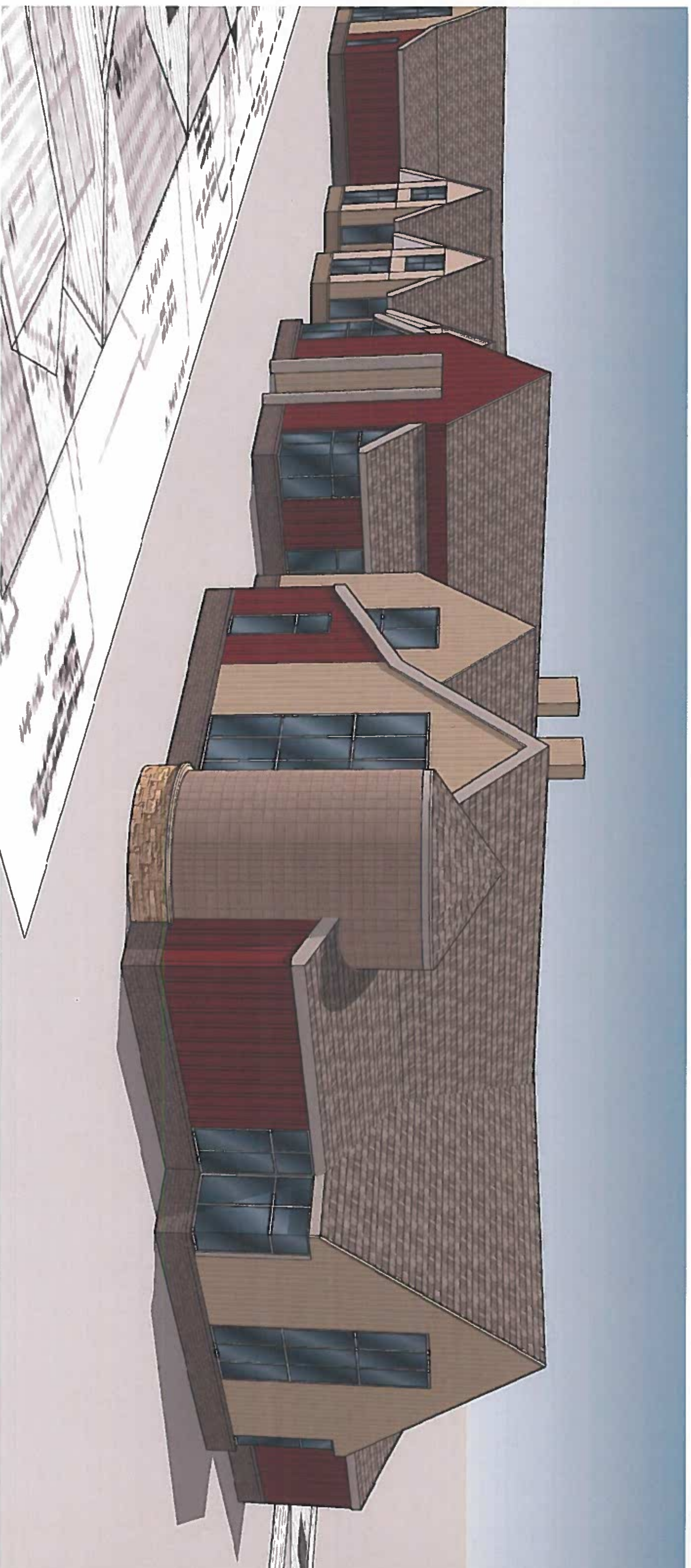


01.15.19



FRONT PERSPECTIVE
LOOKING NORTHEAST

**GLENN A. JONES, M.D.
MEMORIAL LIBRARY**
400 SOUTH PARISH AVENUE,
JOHNSTOWN, CO 80535



FRONT PERSPECTIVE
LOOKING NORTHWEST

**GLENN A. JONES, M.D.
MEMORIAL LIBRARY**
400 SOUTH PARISH AVENUE,
JOHNSTOWN, CO 80535



**FRANSEN
PITTMAN**
EXPECT PRECISION



01.15.19

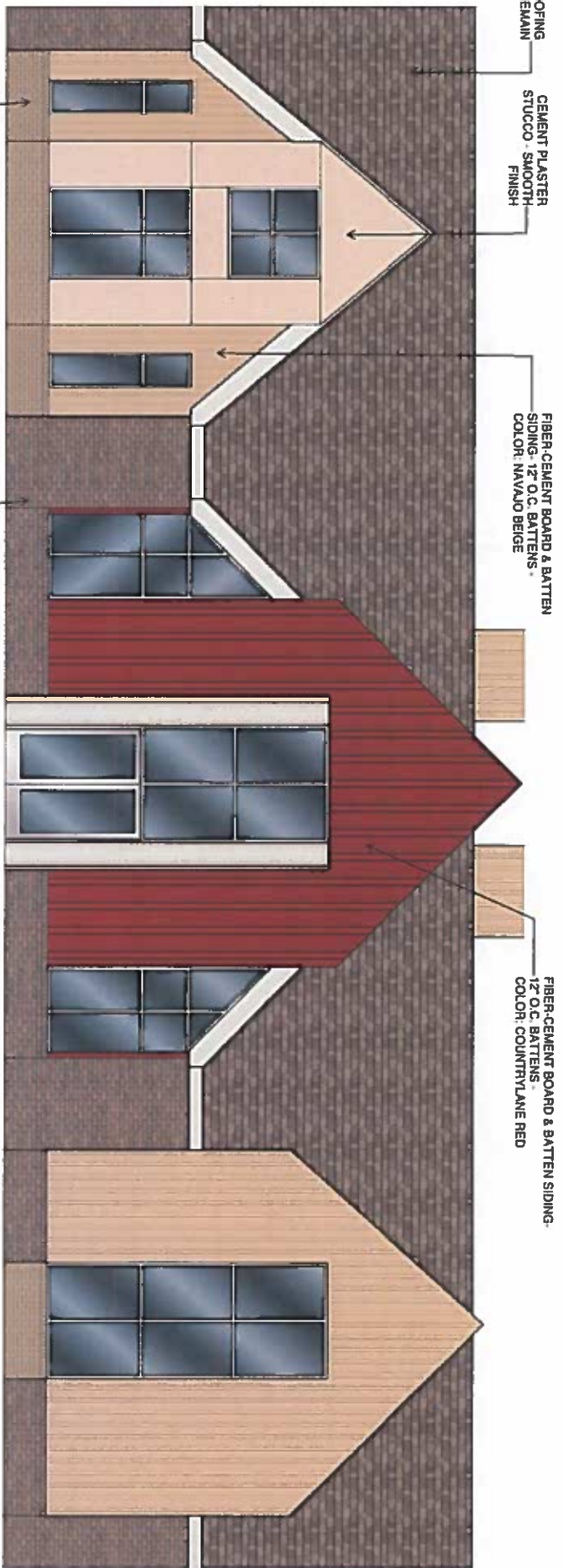


FRONT PERSPECTIVE

LOOKING NORTH - NORTHWEST



2 PARTIAL FRONT ELEVATION
SCALE: 1/8" = 1'-0"



1 PARTIAL FRONT ELEVATION
SCALE: 1/8" = 1'-0"

EXISTING ROOFING TO REMAIN

CEMENT PLASTER STUCCO - SMOOTH FINISH

FIBER-CEMENT BOARD & BATTEN SIDING - 1/2" O.C. BATTENS. COLOR: NAVAJO BEIGE

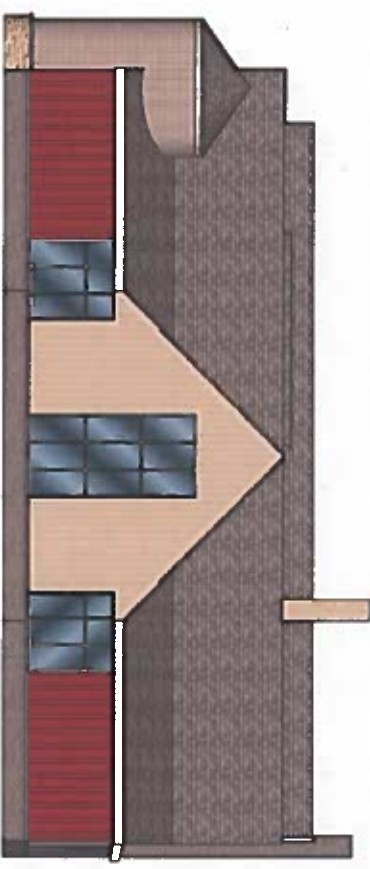
FIBER-CEMENT BOARD & BATTEN SIDING - 1/2" O.C. BATTENS. COLOR: COUNTRYLANE RED

COLISEUM BRICK VENEER WITH 10X SSS COLORED MORTAR-LIGHT BUFF

OLD CHICAGO BRICK VENEER WITH 80X SSS COLORED MORTAR-LIGHT CHOCOLATE



SIDE - WEST ELEVATION
SCALE: 1/8" = 1'-0"



SIDE - EAST ELEVATION
SCALE: 1/8" = 1'-0"



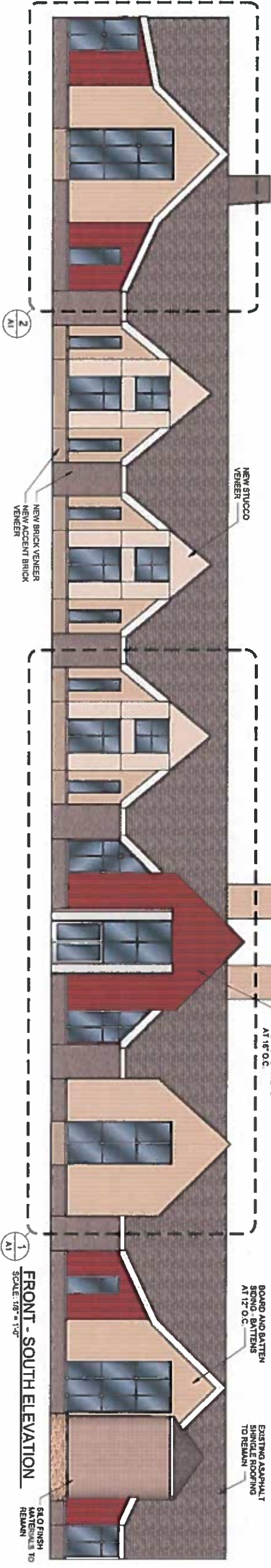
REAR - NORTH ELEVATION
SCALE: 1/8" = 1'-0"

BOARD AND BATTEN SIDING - BATTENS AT 16" O.C.

BOARD AND BATTEN SIDING - BATTENS AT 17" O.C.

EXISTING ASPHALT SHINGLE ROOFING TO REMAIN

NEW STUCCO VENEER



FRONT - SOUTH ELEVATION
SCALE: 1/8" = 1'-0"

NEW BRICK VENEER NEW ACCENT BRICK VENEER

SAO FINISH MATERIALS TO REMAIN