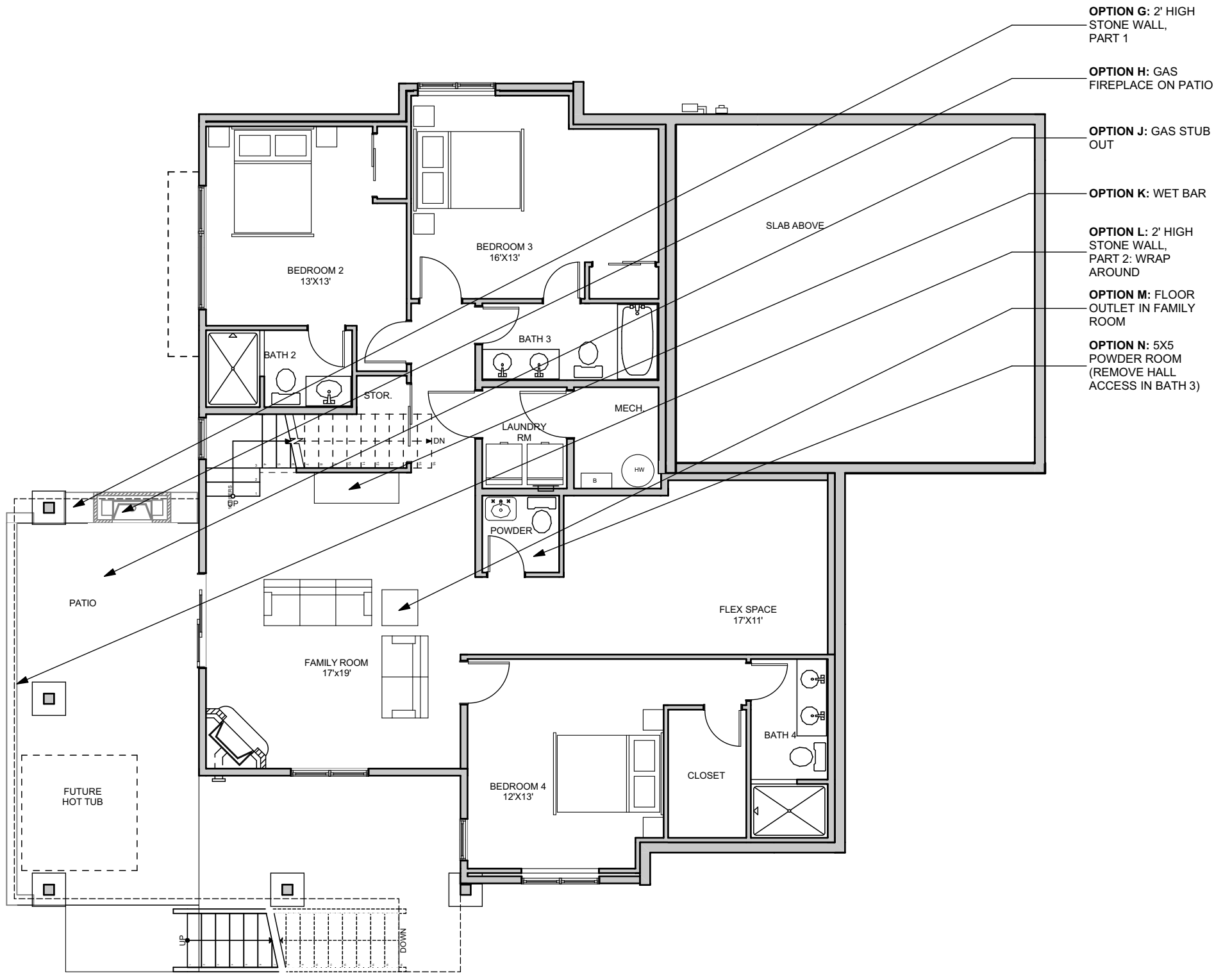


- OPTION A: THRU-WALL AC UNIT IN MASTER
- OPTION B: GAS FIREPLACE IN MASTER BEDROOM
- OPTION C: 2ND LAUNDRY ROOM
- OPTION D: GAS STUB OUT
- OPTION E: THRU-WALL AC UNIT IN LIVING ROOM
- OPTION F: DECK STAIR W 3'-6" ROOF EXTENSION (LOCATION MAY CHANGE)

BUILDING AREA CALCULATIONS			
	FINISHED	UNFINISHED	
TOTAL LOWER FLOOR	1,731	-	1,731
MAIN FLOOR	1,693	562	2,255
TOTAL :	3,424	562	3,986
NOTES:	UNFINISHED INCLUDES GARAGE ALL AREAS APPROX AND SUBJECT TO CHANGE		

1
A-7
MAIN FLOOR

BLDG 11
 NOTE: TYPICAL FLOOR PLANS FOR PRESENTATION PURPOSES ONLY. FLOOR PLANS, SQUARE FOOTAGES, KITCHEN AND BATH LAYOUT, AND WINDOWS SUBJECT TO CHANGE



- OPTION G: 2' HIGH STONE WALL, PART 1
- OPTION H: GAS FIREPLACE ON PATIO
- OPTION J: GAS STUB OUT
- OPTION K: WET BAR
- OPTION L: 2' HIGH STONE WALL, PART 2: WRAP AROUND
- OPTION M: FLOOR OUTLET IN FAMILY ROOM
- OPTION N: 5X5 POWDER ROOM (REMOVE HALL ACCESS IN BATH 3)

BUILDING AREA CALCULATIONS			
	FINISHED	UNFINISHED	
TOTAL LOWER FLOOR	1,731	-	1,731
MAIN FLOOR	1,693	562	2,255
TOTAL :	3,424	562	3,986

NOTES: UNFINISHED INCLUDES GARAGE
ALL AREAS APPROX AND SUBJECT TO CHANGE

BLDG 11
 NOTE: TYPICAL FLOOR PLANS FOR PRESENTATION PURPOSES ONLY. FLOOR PLANS, SQUARE FOOTAGES, KITCHEN AND BATH LAYOUT, AND WINDOWS SUBJECT TO CHANGE

1
A-8
LOWER FLOOR