

SOUTHERN CALIFORNIA **WILDFIRES** DEBRIS REMOVAL 2025

HAZARDOUS TREE MARKINGS

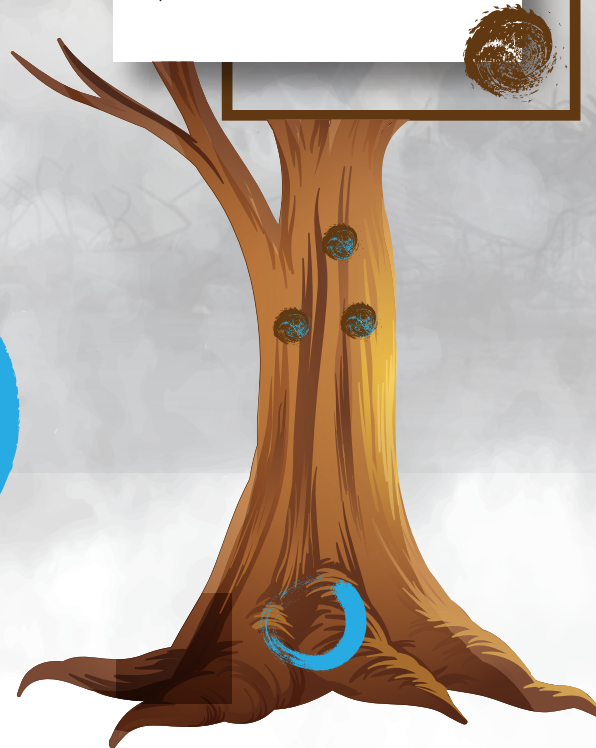
BLUE DOT WITH BARCODE

- Indicates that a tree is hazardous and is marked for removal.
- Trees with this marking have been assessed by an International Society of Arboriculture (ISA)-certified arborist and meet FEMA's hazardous tree criteria.
- The barcode is used for tracking in the contractor's system.



BROWN DOT

- If a tree is reassessed and determined to be non-hazardous by a higher-level ISA-certified arborist, it will be marked with a brown dot overtop the existing blue dot.
- The barcode will be removed, and this update will be recorded in the contractor's tracking system.
- This ensures the tree remains in place and will not be removed.



YELLOW DOT & YELLOW RIBBON

- If a property owner submits a Hazardous Tree Removal Waiver for a tree that has been determined hazardous, the tree will be marked with a yellow dot at the base and a yellow ribbon around the trunk.
- The barcode will be removed, and this update will be recorded in the contractor's tracking system.

