

THE MITCHELL TABLE STORY

ST PorTable - Features and Benefits

Mitchell table systems are made to last...

- Ideal for today's active kids and for the generations to follow
- Decades of service eases schools budgetary concerns
- Durable components mean less service downtime
- Laminate, backer & edge are sanitary and protect the table



Model # ST-4872-C429



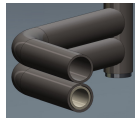
compare these features & benefits...

SAFETY

FUNCTION

COSMETIC

S **F** Mitchell End Legs: Engineered for strength & durability, ST end legs are made with three 1-1/16" O.D. x .072 thick steel tubes. Better materials translates into decades of use



S Center Security: 1/2" steel lock bar at the center of the table securely fits into 7 gauge vertical hinges while in user position, preventing table jackknife. 1"x 1" box steel uplock secures table when in upright position

S **F** Proper Knee Clearance: 17" H seating provides proper knee clearance from the understructure. Tables are available in 27" and 29" height.

C **F** Mitchell Seating: 10" x 40" benches are roomy & made of the same material as the tabletop. Mitchell does not use plastic in any of its seating structures.

F **C** Table top Supports: TWO 1-3/4" deep "U" shaped apron channels, made of 16-gauge cold rolled steel combine with twin dual 1" x 1" box steel tube center legs designed to provide positive, direct support for each half of the table

F **C** Sanitary Top: High pressure laminate top & rigid plastic gator backer below are bonded to 3/4" - 45 lb. density particle board. A large color selection is available

F Mitchell Lift System: Torsion bars - one in each table leg provide controlled and uncomplicated lift assistance

F **C** Adjusting Brace Rods: Every floor is different our brace rods can be field adjusted to bring table tops into the proper parallel relationship with the floor

F **C** Non-mar Swivel Casters: Table end legs are equipped with large 4" (101.6 mm), non-floor marring, hard rubber casters that will move the table smoothly from storage into service

F **S** Nickel Chromium: Choice of legs with chrome or black powder coated finish. Other steel parts are powder coated Black, a durable, nice appearance, that is easy to maintain.

F **C** Unitized Construction: Each table has welded steel brackets and fittings that solidly join and position legs and bench under structure to channel/apron supports and anchor the torsion bar assist mechanism.

F **C** Select an Edge: Choice of either DuraEdge™ extended vinyl bull nose fixed 6" O.C. for terrific bump resistance, or Armor Edge™ the original sprayed-on polyurea edge

S **F** **C** Laminate: Hundreds of laminate choices from Wilsonart Design Series 1, Group 38 & 60 finishes - a surface designed for active use and easy maintenance. Choose a contrasting color for table and bench top

F Air Craft Lock Nuts: Only the finest quality bolts and nuts are used at all pivot points. Lock nuts resist tampering and wont loosen over time, an extra measure of security