



Commit your work to the LORD, and then your plans will succeed. Proverbs 16:3  
**PACKAGING EQUIPMENT SERVICE, HAYSSEN REBUILDS, REPAIRS, TRAINING, INSTALLATIONS, PARTS,  
VFFS MACHINE CONTROLS UPGRADE, FORMING TUBES AND JAWS**  
**CONTACT US:**

Roger Abea Technical Sales and Engineering  
Cell: 954.296.3582 Office: 281.993.6163

Email: [rogerabea07@packagingdiagnosticservices.com](mailto:rogerabea07@packagingdiagnosticservices.com)  
[Roger@pkgpros.com](mailto:Roger@pkgpros.com)  
<https://packagingdiagnosticservices.com/>

## OVERVIEW

Is your packaging equipment showing signs of wear and tear, causing production delays and quality issues? Our team of skilled technicians specializes in rejuvenating your machinery to its optimal condition, saving you time and money.

Here's what our Packaging Machine Reconditioning Services can do for you:

### ENHANCED EFFICIENCY

Our experts will thoroughly inspect and refurbish your packaging machines, ensuring they operate at peak efficiency. This means less downtime, increased output, and a significant boost to your bottom line.

### COST SAVINGS

Reconditioning your machines is a cost-effective alternative to purchasing new equipment. You'll save on capital expenditures while still benefiting from improved performance.

### EXTENDED LIFESPAN

Our meticulous reconditioning process extends the lifespan of your packaging equipment, providing a longer return on your initial investment.

### UPGRADED TECHNOLOGY

We can also upgrade your machinery with the latest technology and automation features, keeping your operations competitive in today's fast-paced market.

### REDUCED ENVIRONMENTAL IMPACT

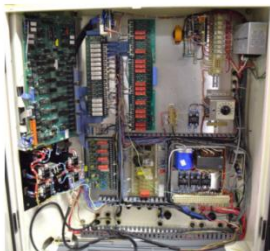
By choosing reconditioning over replacement, you contribute to a sustainable future by reducing waste and conserving valuable resources.



Before - Older Hayssen dedicated Proprietary push button controls.

After - Upgraded Control Touch Screen with Start, Stop, Power and E-Stop

Before - The old Hayssen main control panels removed. Input/Output wiring is disconnected



After - The brand-new Allen Bradley PLC based control panel with Servo drives is installed.





Commit your work to the LORD, and then your plans will succeed. Proverbs 16:3  
**PACKAGING EQUIPMENT SERVICE, HAYSSSEN REBUILDS, REPAIRS, TRAINING, INSTALLATIONS, PARTS,  
 VFFS MACHINE CONTROLS UPGRADE, FORMING TUBES AND JAWS**

**CONTACT US:**

Roger Abea Technical Sales and Engineering

Cell: 954.296.3582 Office: 281.993.6163

Email: [rogerabea07@packagingdiagnosticservices.com](mailto:rogerabea07@packagingdiagnosticservices.com)

[Roger@pkgpros.com](mailto:Roger@pkgpros.com)

<https://packagingdiagnosticservices.com/>

*WE Work with well-known brands:*



A BARRY-WEHMILLER COMPANY



*Weighing and Packaging Solution Systems-  
 New equipment  
 We now offer a complete packaging system at a competitive price*

**Our key markets include:**

- Beverage
- Food
- Pet Food
- Automotive
- Wineries and Distilleries
- Can and Can End Manufacturers
- Industrial
- Household
- Personal Care

**WE BUY OLD USED HAYSSE**



Commit your work to the LORD, and then your plans will succeed. Proverbs 16:3

**Roger Abea Technical Sales and Engineering**

Cell: 954.296.3582 Office: 281.993.6163

Email : [rogerabea07@packagingdiagnosticservices.com](mailto:rogerabea07@packagingdiagnosticservices.com)

<https://packagingdiagnosticservices.com/>

## Hayssen Ultima BAGGER VFFS Machine Control Upgrades



Full Cabinet Replacement



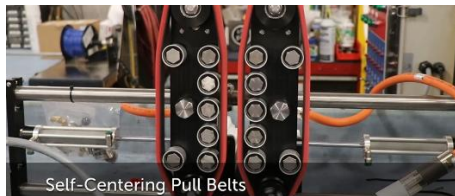
Allen Bradley K5500 Drives



10-inch PV+ 7 Monitor



Festo Air System



Self-Centering Pull Belts



MPL Servo Motors

- Replaces All Ultima Control Systems.
- Replaces Legacy Ultima Control Systems with readily available, fully-supported components.
- Updated HMI.
- Ethernet Connectivity
- Servo Jaw and Zipper compatible Items Included
- Allen Bradley L36 Controller
- Allen Bradley Panel View +7
- Allen Bradley K5500 Servo Drives
- Full Electrical Cabinet
- Self-Centering Pull Belt Upgrade
- Festo Air System Upgrade Installation
- Installation may be completed by trained Service Technician
- All necessary parts and available drawings are included model Availability
- Conversion can be retrofitted to almost all early Hayssen Systems MICRO-LOGIC, MACRO-LOGIC, DECA V, Early Servo Controls and Stepper controls systems

***Major conversions should be performed at our facilities by highly skilled and trained personnel and engineering staff.***