

TH 610 Final Presentation

Snow White and the Seven Dudes – Kallie Marrison



Snow White and the Seven Dudes

by Matt Flick

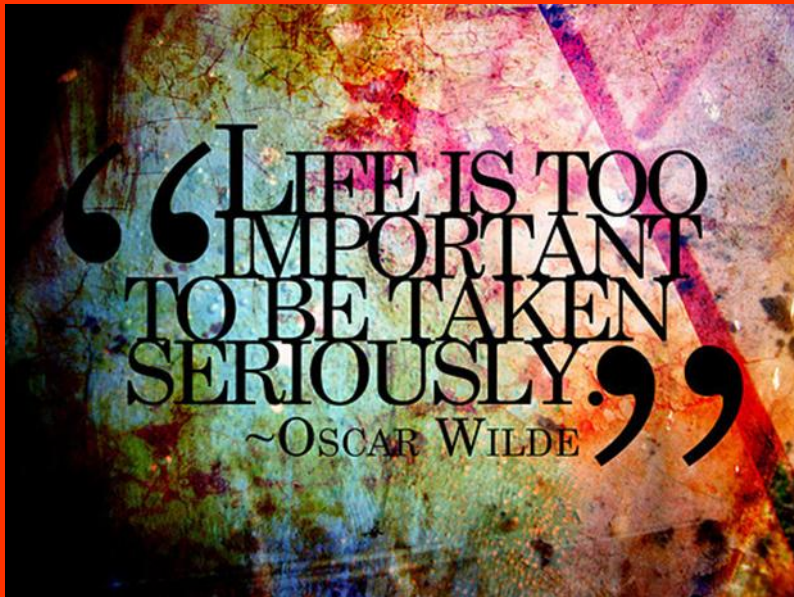
October 11th and 12th

LCC Blackbox

Directed by: Kallie Marrison

Thematic Message of Play

Note: The thematic message of “you can’t take life too seriously” is reflected in some of the absurd, colorful costume choices I made. Please keep this in mind as you view this presentation 😊



Hobo: Fig Newton.

Snow: Why don't you make sense when you talk?

Hobo: (Shrugging) Medicine jelly.

Snow: Okay. Well I'm going to my room now.

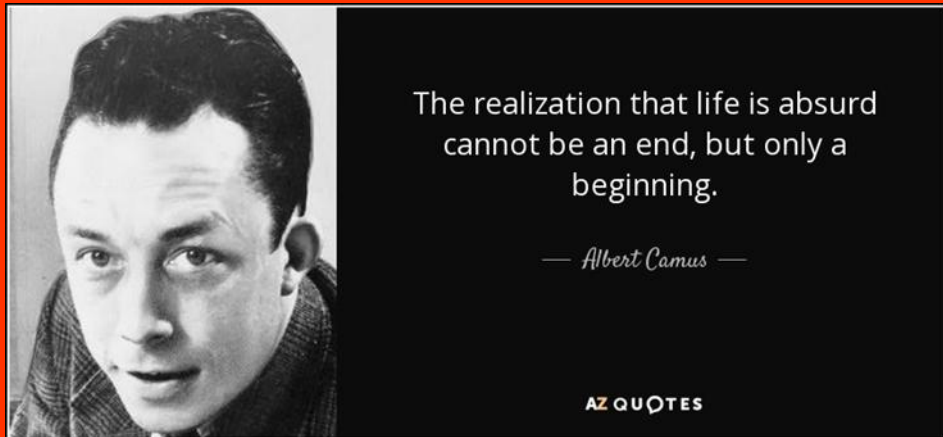
Hobo: You should try it.

Snow: What?

Hobo: Try being absurd. Everything makes sense all the time, why not take time to be ridiculous?

Snow: Actually very little in my life makes sense to me right now.

Hobo: All the more reason to be unpredictable. Go ahead, try it.
(*Snow White and the Seven Dudes*, pg. 20)



Miriam: What was that all about?

Narrator: She's learning about life.

Miriam: That was absurd!

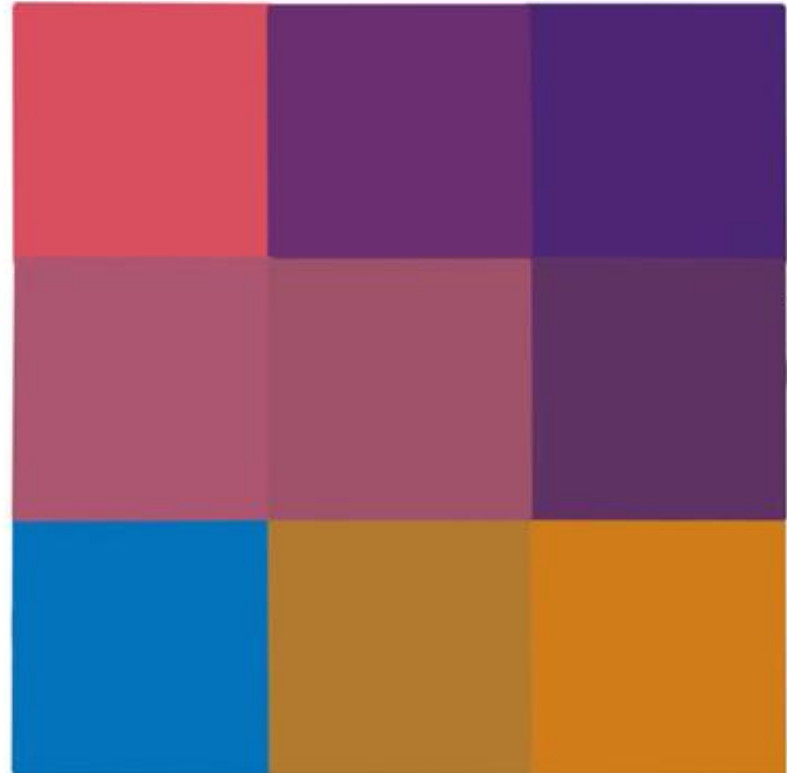
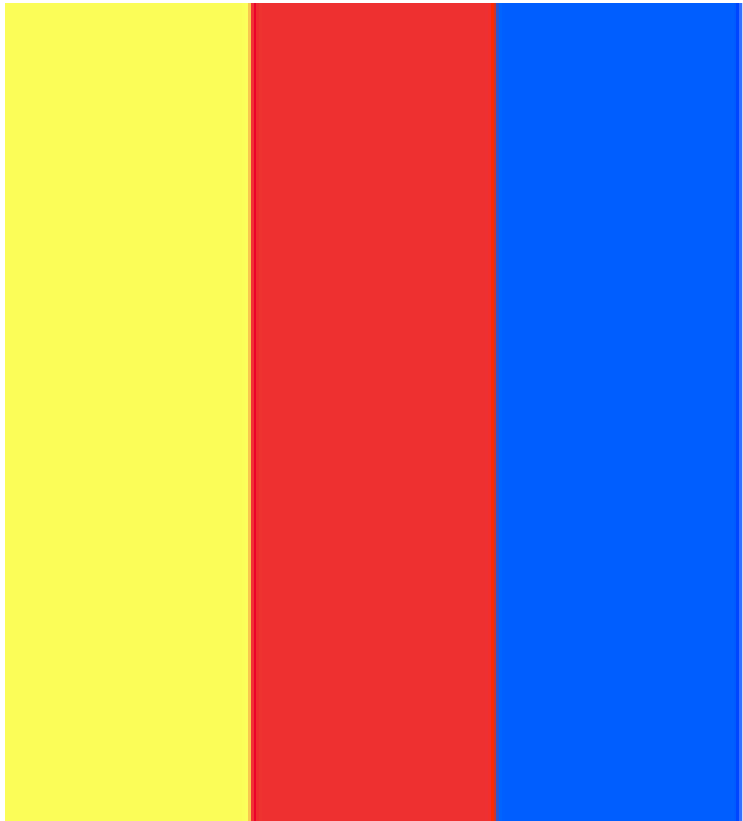
Narrator: Exactly. That's the point. Sometimes life is absurd. It's all in how you handle it.

(*Snow White and the Seven Dudes*, pg. 21)

Initial Costume Inspiration Pictures vs Final Costume Look

Color Palette for Costumes

My goal for *Snow White and the Seven Dudes* was to create a modern-day feel to Disney's *Snow White and the Seven Dwarfs* story and costumes, so a good way to help me achieve this was through using Disney's color palette and popping hints of the original costumes in with the modern pieces.



Snow White's Costume – Inspiration Images

NOTE: This one was my favorite and the one I ended up basing Snow's costume on



Snow White's Costume – Final Look



For Snow's costume, I wanted a modern-day adaptation of the Disney costume in *Snow White and the Seven Dwarfs* – pulling the red, yellow, and blue from the color palette. I also wanted Snow White to have a bow belt and hair bow to reflect Disney's Snow White.

My actress playing Snow had the idea of Snow White having sparkly red shoes. I loved the idea and expanded upon this by finding her a sparkly red jacket as well as a sparkly red hair bow!



Prince's Costume – Inspiration Images

NOTE: This one was my favorite and the one I ended up basing Prince's costume on



Prince's Costume – Final Look



For Prince's costume, I wanted a modern-day adaptation of the Disney costume in *Snow White and the Seven Dwarfs* – pulling the white and blue in the shirt/sweater vest as well as adding a red scarf (also a nod to Disney's Prince's red cape). I had also wanted to pop some yellow hints in the sweater vest, so I had originally purchased the sweater vest on the lower right side of this slide. However, that sweater vest did not make it in time, so I was able to find the dark blue one locally (which ended up working great). Overall, I wanted the Prince to give off “frat boy” vibes, which I feel his costume achieved!

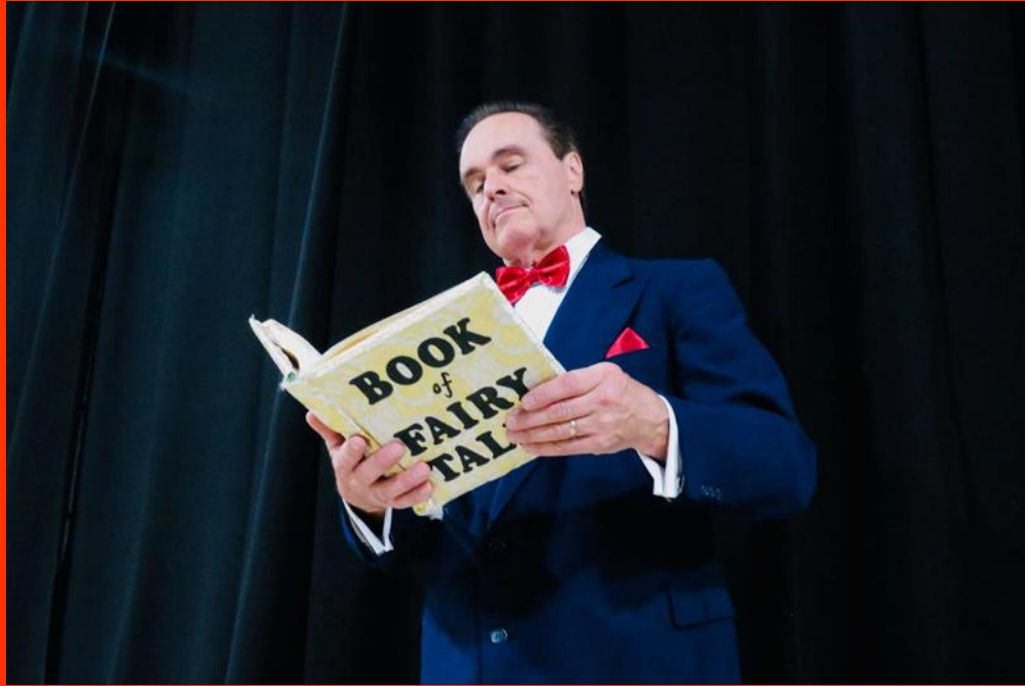
Original Sweater Vest



Narrator's Costume – Inspiration Images



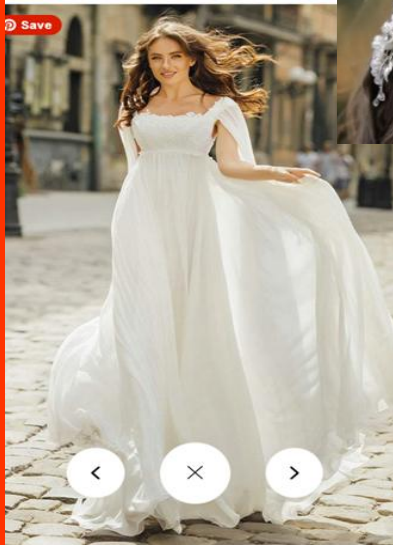
Narrator's Costume – Final Look



The Narrator is the emcee of *Snow White and the Seven Dudes*, so I wanted him in a suit and bow. Pulling colors from the color palette, I had him wear a navy-blue suit with a white shirt and a red bow (with the red bow also reflecting Snow White's red bow).



Miriam's Costume – Inspiration Images



Miriam's Costume – Final Look



Miriam is Snow White's mom who dies of an underlying heart condition at the beginning of the show and acts as the "assistant narrator" for the rest of the show.

For Miriam's costume, I wanted her in a white flowy gown for the following reasons:

- 1) It fit well with the color palette
 - 2) There is one part of the script where she attempts to "haunt" Judith the evil Queen. White worked great to signify her as a "ghost"
 - 3) She often watches out for and defends Snow White while assisting the Narrator, making her a "Guardian Angel" (which white worked great to signify this as well).
- I also wanted Miriam's costume to have a sort of regal feel to it (equal to Judith's regality) because she was the Queen prior to her death. To help achieve this, she wore a diamond bridal belt and a diamond/pearl flower crown, along with diamond bracelets, earrings, and shoes.

Mirror's Costume – Inspiration Images



This is actually the Mirror costume I borrowed from a local children's theatre for my show.

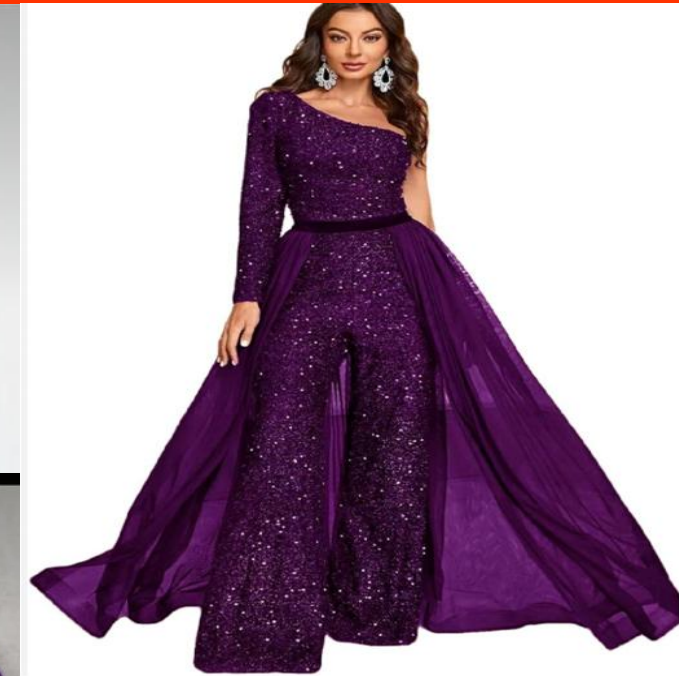
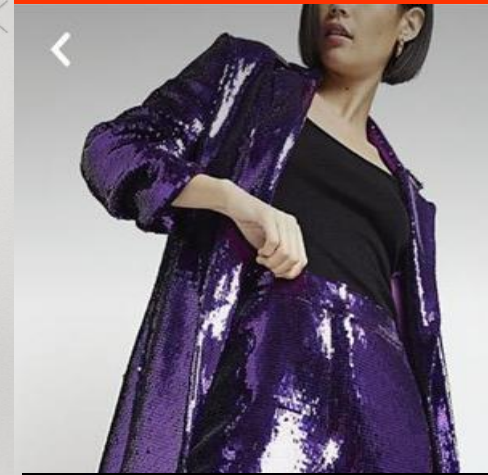


Mirror's Costume – Final Look



I wanted my Mirror to be wearing all black with just her head showing through the fancy Mirror. Wearing all black also allowed the focus to be on the Mirror costume that she held up during her scenes in the show. My actress playing the Mirror specializes in theatrical makeup, so it was her idea to do makeup inspired by Disney's Mirror's makeup while putting her own spin on it. She did a fantastic job! There is a spell scene where the Mirror becomes ill and asks Judith if she has turned green. Judith responds that she is always all green, which the makeup beautifully reflects. I also love how the big red lips and blueish purple forehead are colors pulled from the color palette.

Judith's Costume – Inspiration Images



Judith's Costume – Final Look

For Judith, I wanted a modern-day adaptation of the traditional Evil Queen costume in *Snow White and the Seven Dwarfs* – pulling the purple and red from the color palette. I loved the idea of having her be a “boss babe” in a regal purple pantsuit “dress”. I wanted to incorporate the original red cord belt around her waist with a modern red belt. I also wanted to incorporate the original bedazzled red broach as a matching necklace and earrings set – complete with some black high heel shoes and a black diamond crown. For the poison apple scene, the script specifically called for Judith to wear the “Groucho Marx” glasses as a disguise, but I also found the black cape and decided to have Judith wear this to also reflect the Disney version.

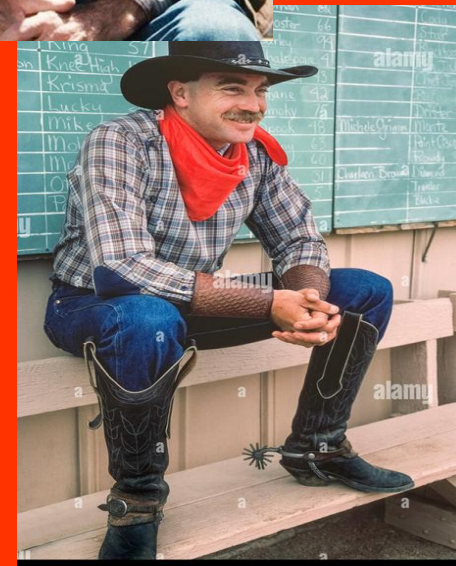
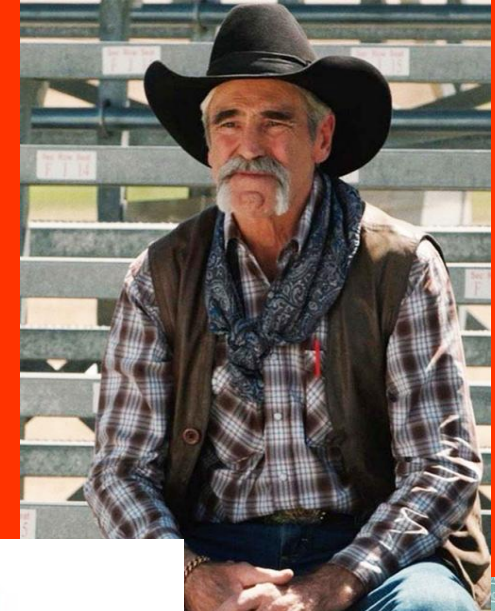


A Note for the Dudes' Costumes...

The dwarfs in Disney's *Snow White and the Seven Dwarfs* had similar matching outfits and hats; with this show, though, the dudes were too different from one another for matching outfits to work. So instead, I came up with the idea to have one costume accessory that each dude would be wearing. Each dude wore a bandana - although the bandanas were all different colors/styles and were also worn differently by each dude (they were worn on the head, on the wrist, on the leg, in a pocket, or around the neck).



Bucko's Costume – Inspiration Images



Bucko's Costume – Final Look



Bucko runs the dude ranch and uses words such as “partner” and “little lady”. He gives off major cowboy vibes, so I wanted him to wear a plaid shirt (red specifically to go with the color palette), a black cowboy hat with cowboy boots, a big belt, and – to complete the look – a red bandana tied around his neck

Bozo's Costume – Inspiration Images



NOTE: This one was my favorite and the one I ended up basing Bozo's costume on



Makeup
Inspiration
Images



Bozo's Costume – Final Look



Bozo is a clown and part of the dude ranch's variety show as well as an ex-street performer. He wears a red nose that he "honks" on several occasions. I struggled with his costume at first because I personally think clowns look creepy (and know both children and full-grown adults who are also scared of clowns). With this being a family show, I did not want to make Bozo creepy or scary! Instead, I wanted Bozo to wear bright colored overalls with stripes (with colors that fit in the color palette – yellow, blue, red, and green) and a plain yellow shirt underneath it complete with red/yellow clown shoes, a red nose, a red bowler derby hat with a yellow daisy, and a rainbow bandana around his neck. I opted against having him wear the multicolor wig because I thought that would give him more of a "creepy" clown feel. I also put my actress playing the Mirror in charge of his makeup and specifically included some "non creepy" makeup ideas in my inspiration images, which she used while also putting her own spin on it (she actually attended "clown school" in the past, so she specializes in clown makeup, so I fully trusted her to do whatever she thought was best with Bozo's makeup). She did a fantastic job – I was thrilled with how it turned out!

Emo's Costume – Inspiration Images



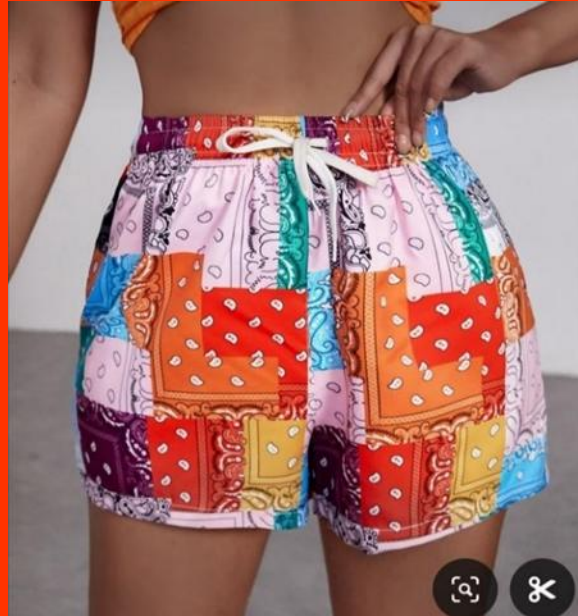
Emo's Costume – Final Look



Emo is your typical “Emo Kid” – he does the music for the dude ranch’s variety show. He is emotional, shy, and introverted – typically off by himself writing depressing new songs. After casting my actor, I decided that I wanted Emo wearing black ripped skinny jeans with a Y2K emo shirt, a black leather jacket, black boots, black wig, black beanie hat, black gloves, emo belt, choker necklaces, and spiked/studded bracelets. Also, instead of Emo having a zebra bandana, I opted for a black bandana tied around tied around his upper leg. My actress playing Emo also purchased a fake black nose ring to wear, painted her nails black, and did some emo style makeup (thick black eyeliner).



Hobo's Costume – Inspiration Images



Hobo's Costume – Final Look



Hobo is first introduced in the script as being “sprawled out on the floor” (pg. 16). When he’s introduced to Snow White, he yawns and says “AAAAAHHHHHHH!!! Chicken feet!!!” (pg. 16), which is why I thought it would be hilarious to have him wearing chicken feet socks. Bucko describes Hobo as “a little crazy. He just kind of wandered in here a couple of years ago” (pg. 17). Throughout the script, he says random words and is the one who tells Snow White to not take life too seriously. Because he is a little crazy and ‘wandered’ prior to arriving at the dude ranch, I wanted Hobo’s costume to consist of pieces he could have found on the side of the road and made into clothes (with also keeping the “bandana” theme). My actress playing Hobo found the bandana overall shorts that we decided to go with instead of the bandana shorts. I also decided to switch the gray tattered shirt to brown because brown fit better with the color palette and the distressing was easier to see with the brown color. I also decided against the fringe vest because I felt the costume didn’t need it. Also instead of a bindle, an acting friend loaned me a black sack bag, which worked well to hide props that Hobo used throughout the show.

Cholo's Costume – Inspiration Images



Cholo's Costume – Final Look



Cholo is a hippie mechanic who constantly says “peace”. He is also in charge of making sure all the vehicles at the dude ranch are in working order. I wanted Cholo’s costume to be a typical mechanic suit (dark blue to go along with the color palette) complete with black work boots and a dark blue bandana in his mechanic suit pocket. To show his hippie side, I wanted him to wear “peace sign” rainbow necklace and earrings as well as rainbow aviator glasses and a rainbow headband.



Boyardi~o's Costume – Inspiration Images



Boyardi-o's Costume – Final Look



Boyardi-o is the Chef for the dude ranch. I wanted him to wear a traditional white chef uniform with black pants and a tall chef's hat (also keeping in line with the color palette). He also wore black shoes. He also wore a black bandana with yellow smiley faces on his wrist for the whole show. My actor also requested that he have a name tag with the name "Ramsay" on it for extra laughs.

There is a part in the script where Boyardi-o gives Snow White cooking lessons. During this scene, my actor requested that he put a small chef's hat on Snow's head, which was a cute humorous touch. I also purchased a white apron for Snow to wear during this scene.



Mimo's Costume – Inspiration Images



Mimo's Costume – Final Look



Mimo is a mime who performs in the variety show at the dude ranch. He does not speak at all but instead uses actions and gestures to communicate (including leading the dudes in a game of charades). For Mimo, I wanted him to wear a typical mime costume – black pants with a black/white striped shirt, black suspenders, white gloves, a black beret hat, black high-top converse, and a red bandana around his neck (which also fits nicely into the show's color palette). My actress playing the Mirror also designed Mimo's makeup based on the inspiration images (along with her own unique touches – like adding a red heart to Mimo's cheek to show Mimo's love for Snow White).

More Photos from Snow White and the Seven Dudes





Me with my Cast and Crew



Archival Video for *Snow White and the Seven Dudes*

YouTube Link: <https://www.youtube.com/watch?v=uJouHlqTpBM&list=LL&index=1>.



NOTE: This is an archival unlisted video – please do not share outside this class ☺

Also, there are two parts towards the end where the camera gets a little weird. The person who created this video donated their time and resources to create it for me for free, so I did not want to say anything regarding the editing of these two short sections as I am grateful to them for doing this video for me.