

Each year around 80,000 people come to the Parklife festival in Heaton Park, one entrance of which is only a few hundred metres from Heaton Park Methodist Church. Each year we see stories of vulnerable people (of all ages) wandering around Prestwich trying to find a taxi or safe space to find their friends.

After a number of years of conversations with the organisers of Parklife and their well-being team WelSafe we are planning to open up an off site sanctuary space across the weekend in our church to provide that safe space for when the park is closed and an place where people can go if the festival environment becomes too much for any reason. We will be providing a sanctuary and opportunity for people to talk, rest, pray contact parents/family/friends and wait as required.

We are hoping to be open from just before the festival starts at 10.00am on Saturday June 11th through to 9.00am on Monday June 13th, but to do this we need your help.

We are looking for people willing to give a few hours across the weekend to be part of the team staffing the church during this event. We are hoping to have at least four people at all times so no one will ever be left vulnerable and we will be working alongside their security, medical and wellbeing teams, as well as the local police so we will not be on our own. There will be training provided and you will need a DBS check (which we can organise if needed).

We are really excited by this opportunity to be part of something like this but need your help to make it happen! Please do share this with anyone you feel may be interested and get in touch if you want to be a part of the team or want to find out more. And even if you can't offer your time and presence, please do pray.

Rev'd Jez Hackett

jezh.22@hotmail.co.uk 0161 759 1751

# The Irwell Vale Centre

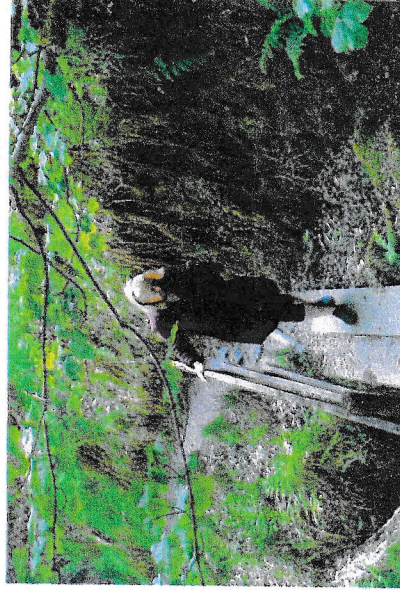


for spirituality and creativity

The Centre is available for  
Retreats and Quiet Days



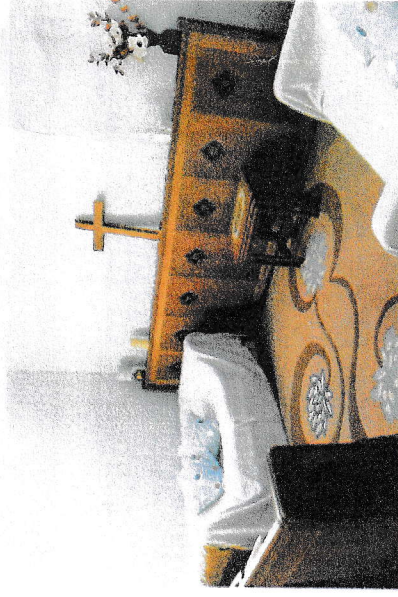
Reflection and prayer walks



The Centre offers

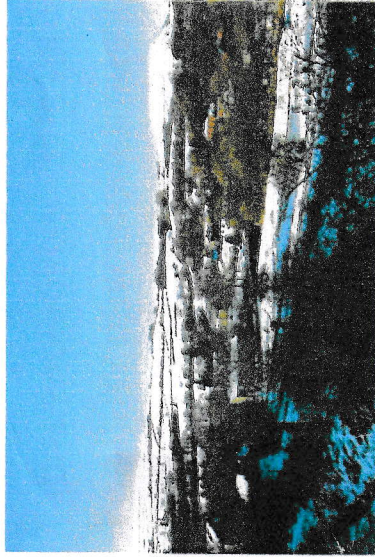
A large warm open space

Ideal for exhibitions and  
presentations with Wi-fi and  
multimedia

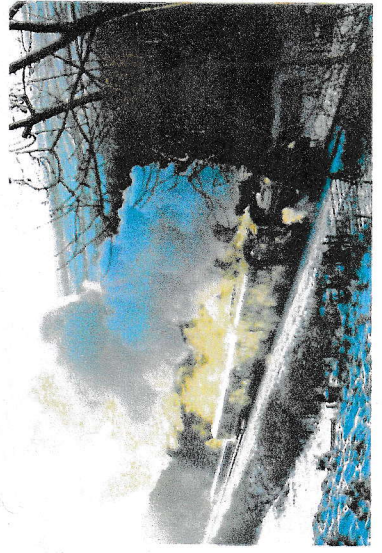


Smaller spaces for prayer  
discussion and group work

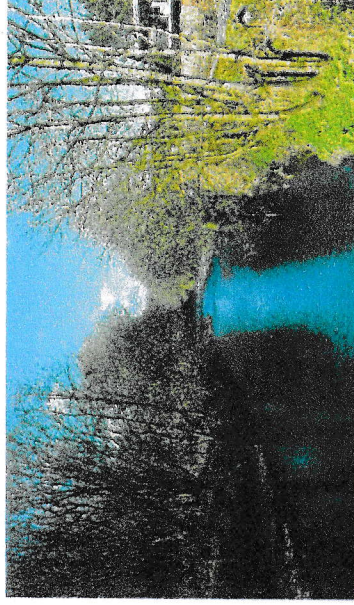
The Centre is situated in the small historic mill village of Irwell Vale in the beautiful Rossendale Valley



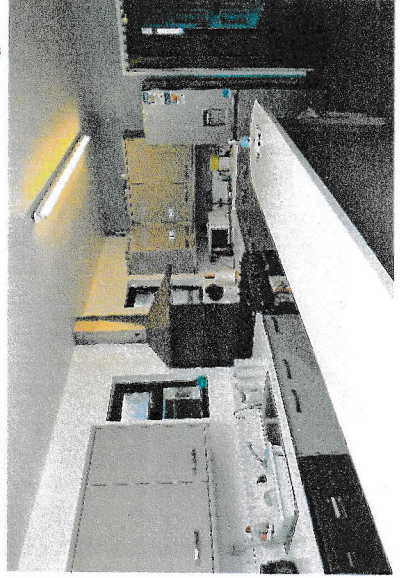
Easy access to The East Lancashire Railway, local mill towns and a textile museum



The Centre is ideal for walking painting sketching photography quietness and spiritual exploration



Meals can be provided from the kitchen/dining area with the option of self-catering



For further information and booking details

Please contact

Mrs Jeni Evans

01706 828610

Irwell Vale Methodist Church

BLO 0QQ

Take a look at

[www.rossendalemethodistcircuit.co.uk](http://www.rossendalemethodistcircuit.co.uk)