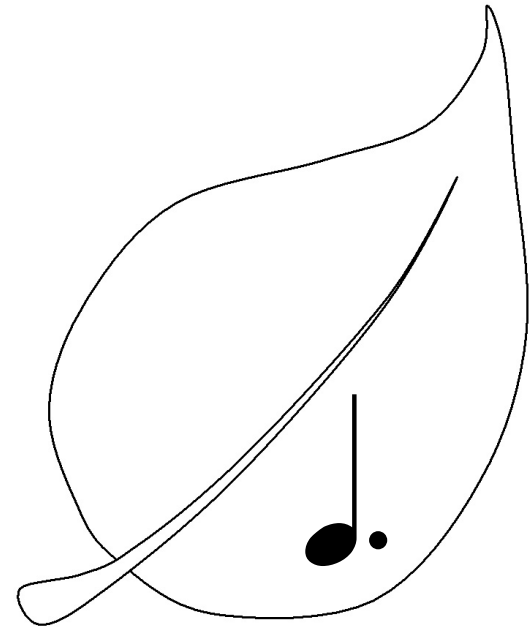
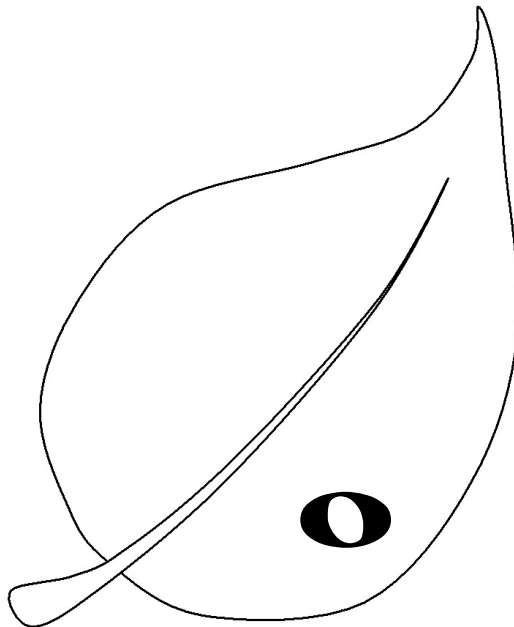
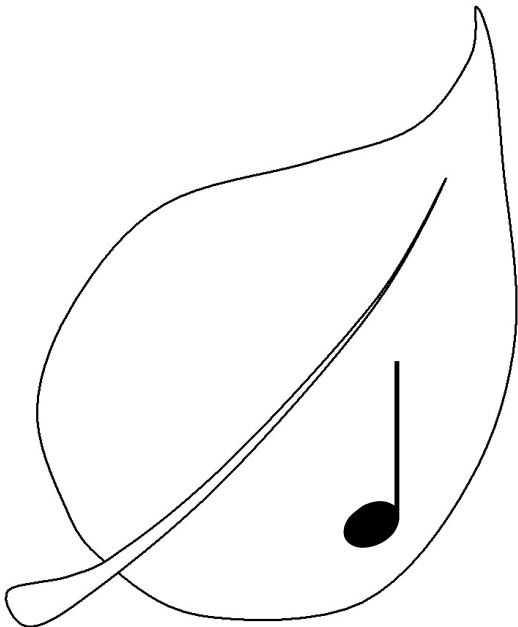
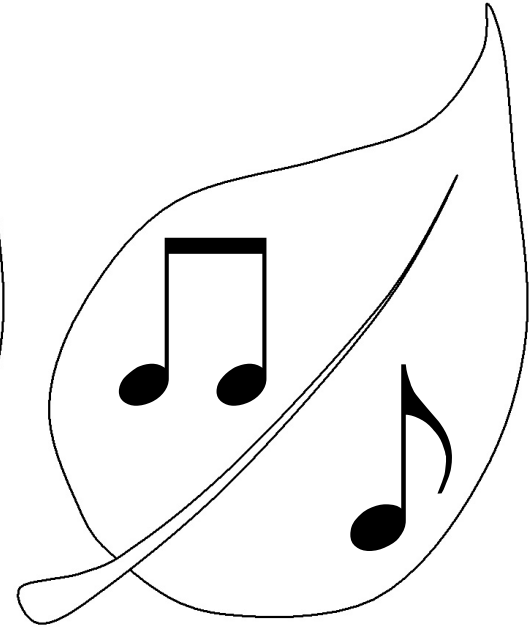
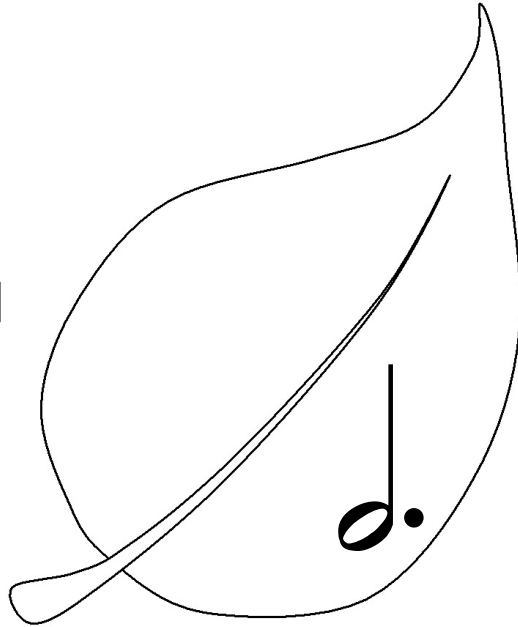
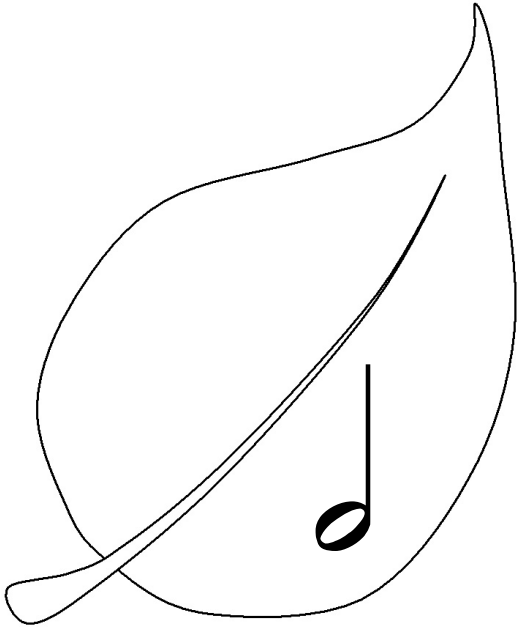
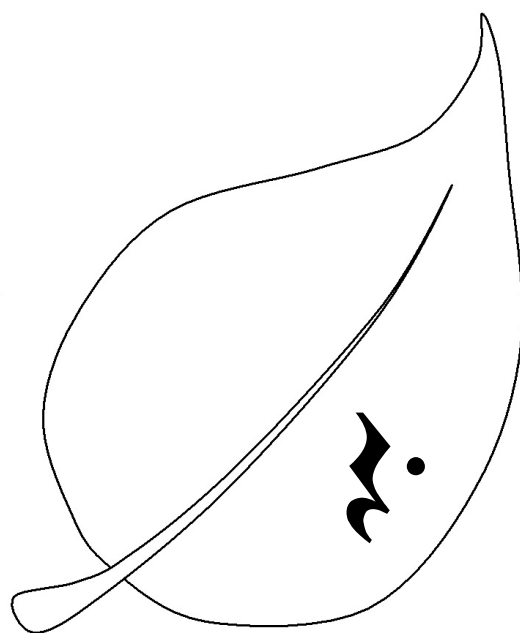
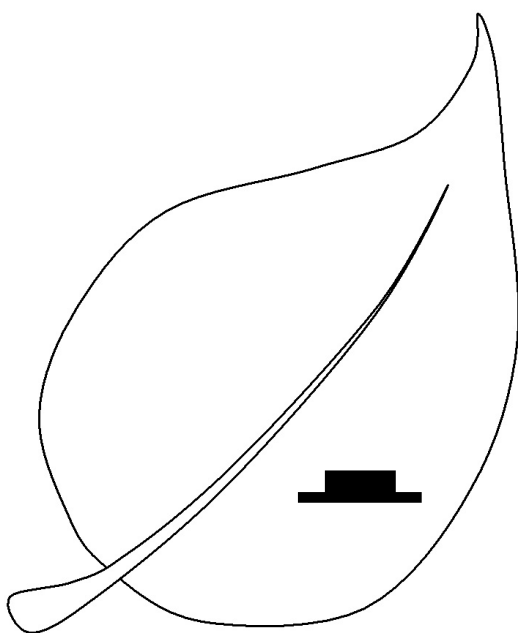
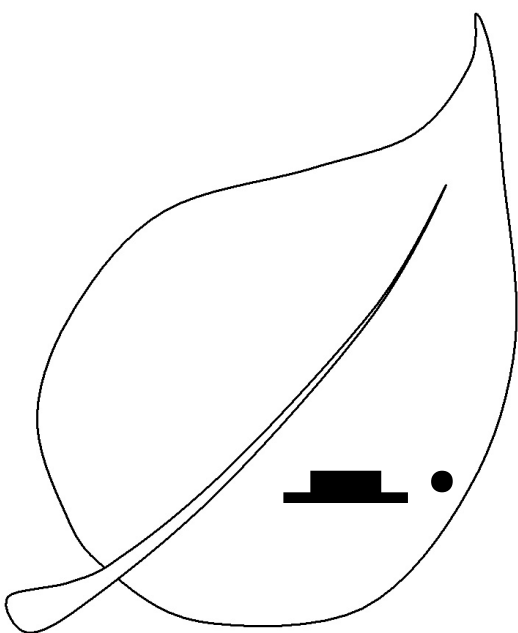
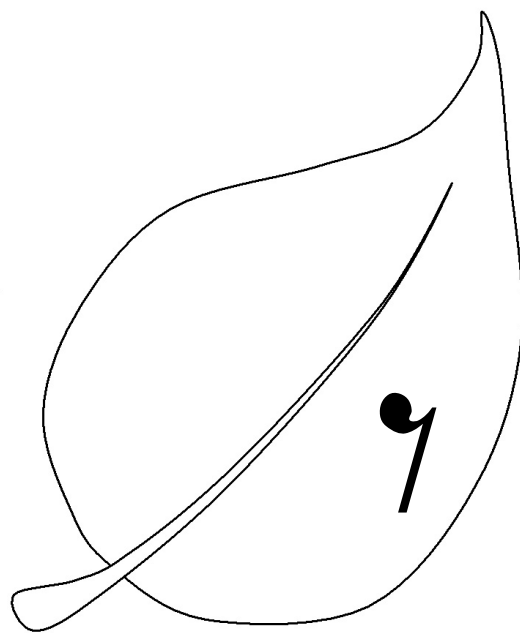
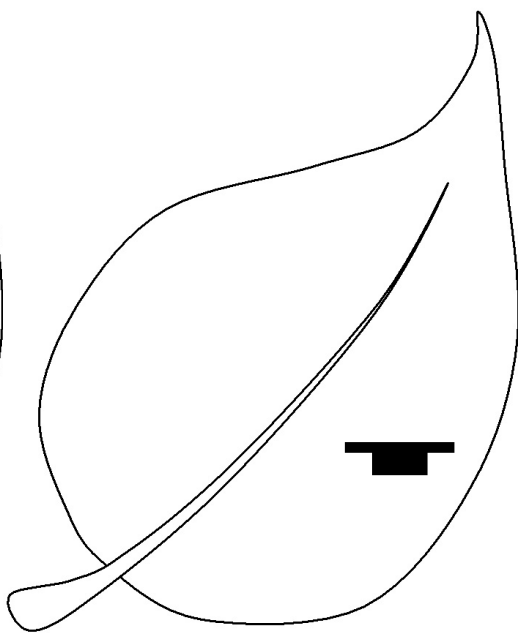
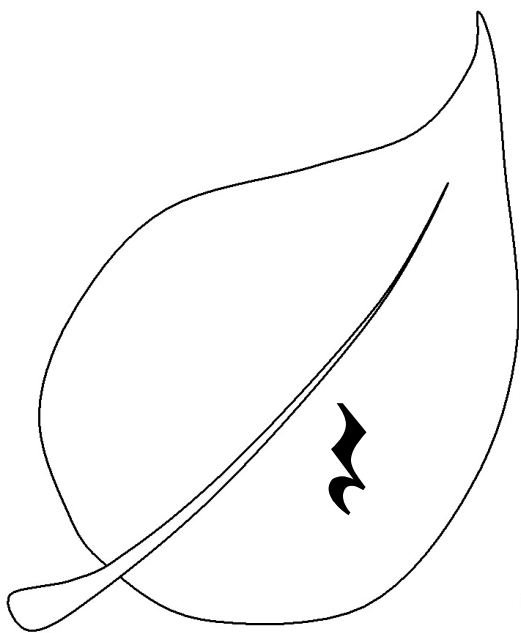


Dynamics

Notes



Rests



Musical Definitions

 Treble Clef


 Flat

 Bass Clef

 Sharp

 Repeat Sign

 Time Signature

 Double Bar Line

 Bar Line

 Natural Sign

Dynamics

pp Pianissimo - very soft

ff Fortissimo - very loud


mp Mezzo Piano - medium soft


mf Mezzo Forte - medium loud


p Piano - soft

f Forte - loud

Notes


  Eighth notes - 1/2 a beat

 Half note - 2 beats

 Quarter note - 1 beat

 Dotted half note - 3 beats

 Dotted quarter note - 1 1/2 beats

 Whole note - 4 beats

Rests

 Eighth rest - 1/2 a beat

 Half rest - 2 beats

 Quarter rest - 1 beat

 Dotted half rest - 3 beats

 Dotted quarter rest - 1 1/2 beats

 Whole rest - 4 beats