

Quick Check Drive® Inspection

Autonomous Alignment and Tread Depth for the Service Drive

MADE IN USA
USING THE FINEST US & GLOBAL MATERIALS



H² HunterNet®
Connectivity

Featuring Flightboard™ —
At-A-Glance touchless inspection results

Vehicle

Toyota : RAV4 4X2 : 2015

MO AH1Y9C

11:43

Wheel Alignment



Recommend a comprehensive alignment check

⚠ May require Safety System Alignment®

Front Tires



Rear Tires



Unmanned Inspection At-A-Glance

PATENTED

Automatic Alignment Results

- ✓ **Quick Check Drive®** — Touchless total toe and individual camber
- ✓ **Quick Tread Edge®** — Measures tread depth, analyzes data on-site, and instantly displays results
- ✓ **Boost most profitable undercar services**
- ✓ **No additional labor required**

NO STOPPING

**PLEASE
DRIVE
FORWARD**

NO LABOR



NO DATA ENTRY



Vehicle Identification

Automatically determine OEM specs for most vehicles

PATENT PENDING



RECOMMENDED
External Camera

Optional Body Camera Feature



Automatic body photos protect against mistaken damage claims

**Quick Check Drive® —
A powerful autonomous
alignment inspection system!**

**Quick Tread Edge® —
Touchless tread depth with
edge wear detection!**

Quick Tread Edge® requires a Hunter inspection console.

Vehicle OE warranty policies vary, please consult OE guidelines when establishing vehicle inspection policies.

External identification camera sold separately.

As state-by-state license plate designs evolve, the use of an external camera is recommended to insure the inspection system's continuous accuracy.

Get Results Your Way

Flightboard™

Provide immediate feedback on customer alignment and tread depth inspections, while alerting them to important safety recall information.



Self-Service Kiosks*

Allow customers to review, approve, and schedule recommended services during check-in.

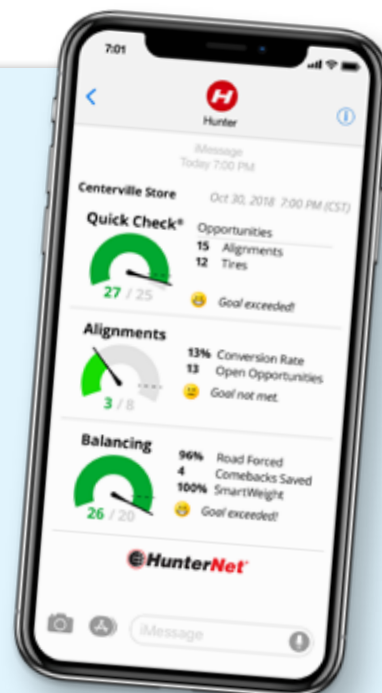
Shop Results

Present detailed inspection information from any PC or tablet with an internet connection.



Push Reports

Daily delivery of inspection rates, opportunities, alignment numbers, and conversions by email and text from your connected Hunter equipment that allows you to compare results to goals you set.



* Requires third-party integration.

Selling and Reporting Tools

Powered by



Increase your productivity and revenue with HunterNet® selling tools.

**TAP FOR
DETAILS**



- ✓ Quickly view vehicle service opportunities
- ✓ Access and email detailed inspection results
- ✓ Review body image photos to assess damage claims
- ✓ Edit or resolve vehicle information for proper alignment specs
- ✓ Desktop- and mobile-friendly

Push Reports —
Measure inspection performance and pinpoint improvement opportunities with reporting tools.

Set goals and track performance

- ✓ View inspection rates and opportunities
- ✓ Measure alignment numbers and conversions

Dynamic reporting

- ✓ Track balancing and Road Force® utilization
- ✓ See 7-day alignment and tire trends
- ✓ Track significant milestones
- ✓ Automatic, daily delivery

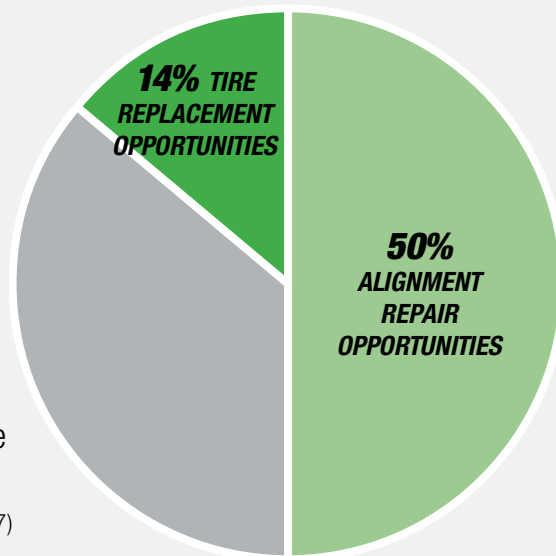


Autonomously Identify Today's Most Profitable Service Opportunities

\$4,000*

Potential Tire Revenue Opportunity Per Day

Tire sales are critical to customer retention. Plus, the first to show the tire need and ask for the sale gets the order 85% of the time. (NADA 2017)



\$2,500*

Potential Alignment Revenue Opportunity Per Day

Alignment service has the highest margin in your service department. 68% of an alignment sale is profit. (MTD 2016)

*Based on 50 vehicles per day shop average, an average tire replacement of \$150 in revenue, and an average four-wheel alignment of \$100 in revenue.

Tire failure rates based on Hunter study of 25,000 vehicles
Alignment failure rates based on Hunter study of one million Quick Check Drive results.

Return On Investment

Vehicles/day: 50

Alignment Inspection

Typical Failure Rate
50%

Daily Alignment Opportunity
25

Customer's Acceptance Rate
40%

Typical Alignment Profit
\$68

Additional Alignment Sales:
+10
\$680

+

+ Tire Inspection

Typical Failure Rate
15%

Daily Tire Opportunity
30

Customer's Acceptance Rate
60%

Typical Tire Profit
\$26

Additional Tires Sales:
+18
\$468



Add'l Daily Profit: \$1,158

Annual Return: \$305,712

Equipment Investment: \$70,000

Equipment Payback: 4½ Months!

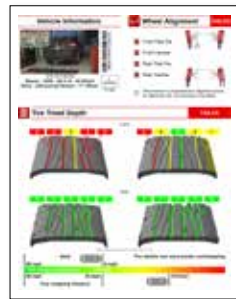
NEW Automatic Tire Offers in 15 Seconds!

HUNTER
Engineering Company

DealerTire

Hunter Unmanned Inspection Equipment automatically captures:

- ✓ Tire Tread
- ✓ Wheel Size
- ✓ VIN
- ✓ Alignment



Dealer Tire Integration automatically provides:

- ✓ Correct Tire Choices
- ✓ Correct Pricing
- ✓ In Stock
- ✓ and More

Fully-automatic sales tool in 15 seconds

HARRISON auto mall

Search results for 2013 NISSAN JUK

Inspections Dashboard Parts Portal Quote

Dynamic Retail Selling Guide

Size SKU/PN Vehicle VIN Product

Year Make Model Trim Option

Search Clear

Filters Reset

Tire Size (show only)

- ☒ 215/55R17 (17)
- ☒ 215/55ZR17 (1)
- ☐ 225/45R18 (7)
- ☐ 225/45ZR18 (1)
- ☒ P215/55R17 (8)

We Stock

- ☐ Yes (0)
- ☐ No (34)
- ☒ All (34)

Brand (show only)

Showing 26 out of 34 items (8 hidden) Sorted by Default

Continental CONTIPROCONTACT BW

P215/55R17 | 93V
SKU: 1549042 PN: 0ETIR02923

DEMO Road Hazard Included
Warranty: 40,000 Miles

5 on hand as of 9:21 a.m.

Warehouse availability

Check

Buy 3 get 1 for \$1.00 Promotion

Retail	Installed*
\$580.15	\$758.13

Includes tax and promotion

4 Add

Michelin PRIMACY MXV4 BW

P215/55R17 | 93V
SKU: 08357 PN: 0ETIR02936

Fuel Efficient DEMO

4 on hand as of 9:21 a.m.

Warehouse availability

Check

Retail	Installed*
\$1004.40	\$1224.80

Includes tax

4 Add

Annotations:

- Your Logo (HARRISON auto mall)
- Customer's Vehicle (2013 NISSAN JUK)
- Customer's Wheel Size (215/55R17)
- Your Inventory (Showing 26 out of 34 items)
- Your Promo (Buy 3 get 1 for \$1.00 Promotion)
- Your Prices (Retail \$580.15, Installed* \$758.13)
- Ready to Buy (Add button)

Benefits of Autonomous Service Experience



GoMoto's Self-Service Kiosk integrates data captured by Hunter's unmanned inspection to provide customers:

- ✓ Recommended service at check-in
- ✓ Ability to accept or reject recommended service
- ✓ Ability to schedule recommended service once approved



✓ Increase Drive Efficiency

- Write more ROs without increasing staff
- Relieve busy hour overflow
- Save valuable space in smaller drive

✓ Enhance Customer Experience

- Kiosks reduce customer wait times
- Kiosks engage Millennial and Gen-Y customers
- Kiosks provide consistent experience for every customer, every time



Sample GoMoto inspection results

Open Recall Reporting

Powered by



Open Recall Reports powered by CARFAX® indicates if an open, unperformed recall is present for a specific VIN.

- ✓ Appears on Flightboard™ and HunterNet® Quick View provides a detailed recall report
- ✓ Available for all U.S. states and many Canadian provinces
- ✓ Automatically activated with authorized CARFAX® end user license agreement (EULA)

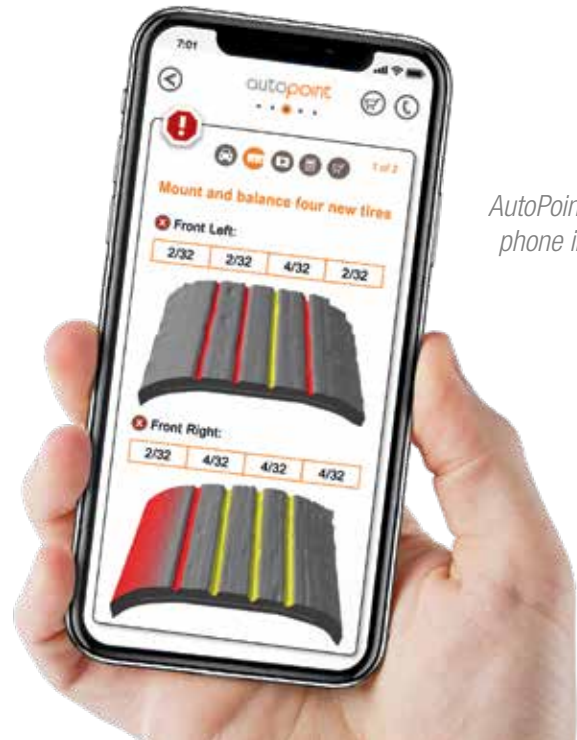


More than 57 million vehicles in the U.S. (one of every five on the road) have an open, unperformed recall as of 2018 according to CARFAX estimates.

Partner Integration

- ✓ Accelerate inspection process
- ✓ Secure more service authorizations
- ✓ Increase productivity by eliminating duplicate entries
- ✓ Provide more satisfying experience for customers
- ✓ Maximize service revenue
- ✓ Increase customer retention

Our industry-leading partners integrate with virtually every major dealer management and shop management system to provide seamless customer service experience.



AutoPoint sample phone interface

AUTO DEALER



AFTERMARKET



ENHANCED Touchless Inspection: **Quick Check Drive® and Quick Tread Edge®**

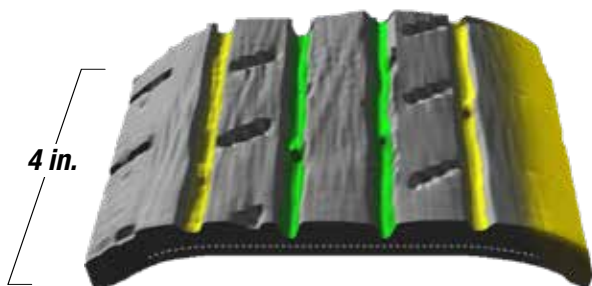
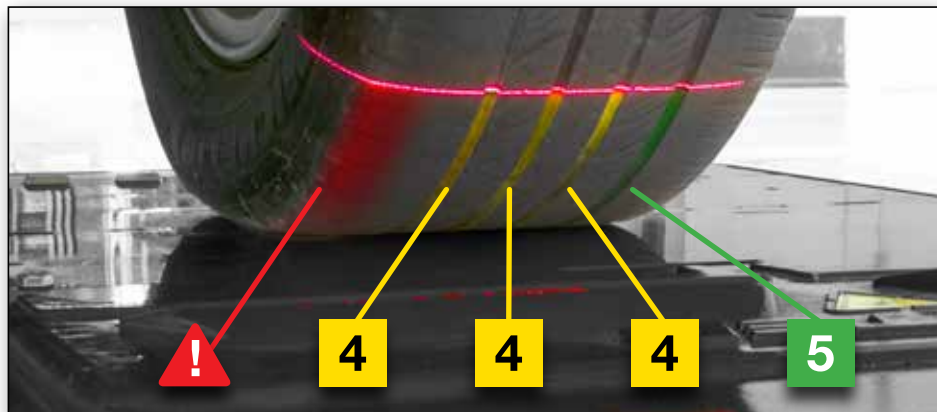
*As the vehicle drives through, Quick Check Drive measures
camber, total toe, **and rim diameter.***

**MADE
IN USA**
USING THE FINEST US & GLOBAL MATERIALS

- ✓ **Four High-Definition Cameras**
- ✓ **8 Cameras and 32 Laser Sensors**
- ✓ **Intelligent and Fast**
 - Scan a new vehicle every 3 to 5 seconds
 - Only activates when vehicle is present



***Hunter's tread depth
unit, with tire edge wear
detection, automatically
measures the tread depth
of each tire from edge to
edge in seconds.***



Accurate tread depth calculated for each groove.

- ✓ Flush-mounted Quick Tread Edge® configuration integrates seamlessly with Quick Check Drive®
- ✓ Stores tread depth records to create customer history for use in marketing efforts
- ✓ No recurring monthly charge
- ✓ Built with corrosion-resistant stainless steel, includes self-cleaning air knife

Introducing the Hunter Quick Pit



You want to invest in Hunter's Quick Check Drive® and flush-mounted Quick Tread Edge® inspection system, but have concerns with disrupting your service lane...

Solution: Hunter's single-pour solution simplifies the concrete work for installing Quick Check Drive® and Quick Tread Edge® — a new method to minimize disruption in the service drive. Go from floor cut to concrete cure in as little as eight hours. Timed right, service lanes can be running new Hunter inspection equipment with little to no downtime.

Turn this...



Typical Service Lane

- ✓ Vehicle enters lane for service



... into this.



Fully-Autonomous Inspection Lane

- ✓ Vehicle enters lane for service
- ✓ Vehicle alignment inspected
- ✓ Vehicle tread inspected
- ✓ Vehicle details collected
- ✓ Suggested vehicle services ready for customer review

Quick Pit One-Day QTEF Frame Installation

Step 1: Excavation Pit and Conduit Trench ~ 3 Hours



Step 2: Secure Frame and Run Conduit ~ 3 Hours



Step 3: Pour and Finish Concrete ~ 2 Hours



See it in action (scan QR code)
**and contact your local Hunter
Representative to learn more!**

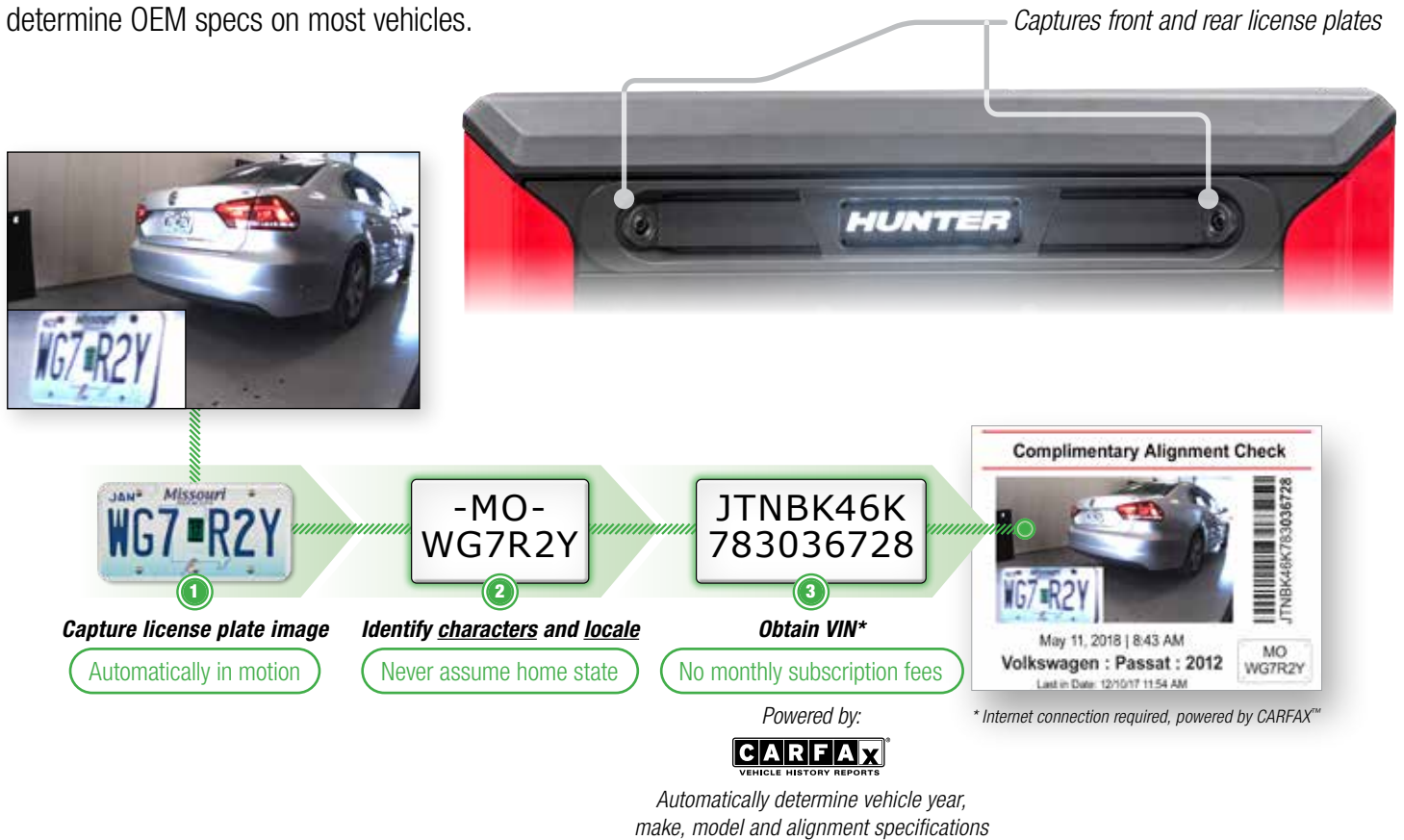
*For detailed site requirements,
please reference forms 7711-T, 7615-T,
7616-T, and 7617-T.*

*Specific construction processes will vary.
Consult local codes prior to construction.*

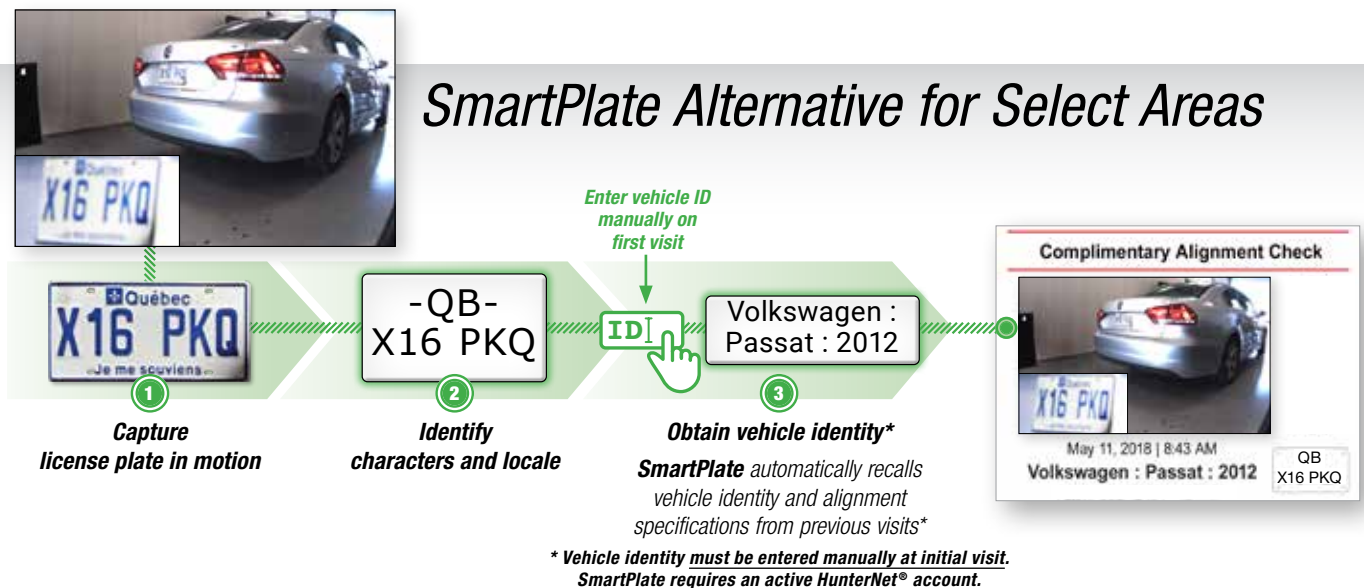
PATENT PENDING

Automatic Vehicle Identification

Standard, built-in cameras capture vehicle's license plate as it enters or exits the Quick Check Drive® unit's field of vision. Automatically determine OEM specs on most vehicles.



SmartPlate Alternative for Select Areas



RECOMMENDED

External Camera for Challenging Situations

Hunter's external vehicle identification camera captures better quality photos — especially on challenging license plate designs and special character layouts.*

- ✓ External camera solves difficult install situations such as low lighting, daylight glare, and field of view obstacles
- ✓ Flexible camera installation options include indoor or outdoor placement, ceiling- or wall-mounted, and center or off-center locations



Standard camera resolution



Optional external camera resolution

- ✓ Identify characters better, more often
- ✓ Special characters are more recognizable at higher resolution
- ✓ Distinguish characters from plate design more easily

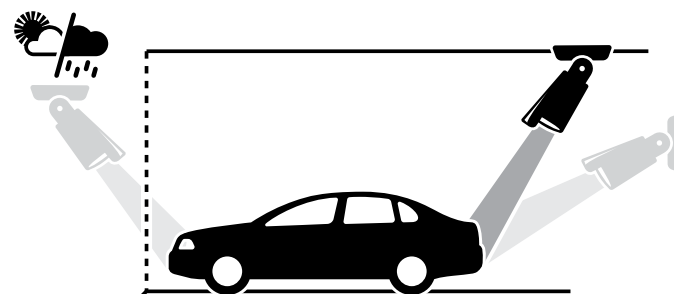
Extensive license plate coverage

- ✓ Every U.S. state and most Canadian Provinces*
- ✓ Custom character plates
- ✓ State vanity plates
- ✓ New plates available regularly with spec updates



Flexible camera installation options

- ✓ Indoor or outdoor
- ✓ Ceiling- or wall-mounted, center or off-center
- ✓ Front or rear license plate position
- ✓ Quick Tread® or Quick Check® camera trigger

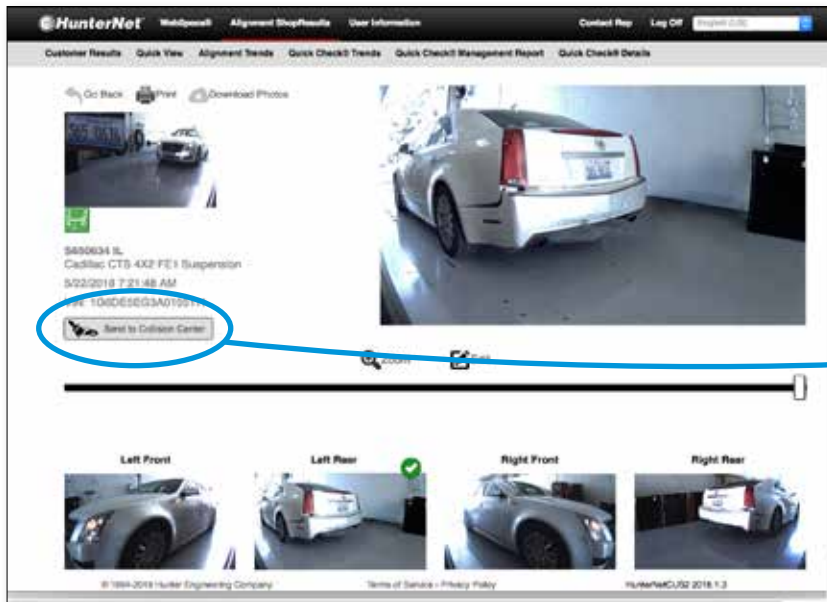


* See form 7604-T for a map of states with challenging license plates.

OPTIONAL

Automatic Body Image Capture

Using the same built-in high-definition cameras, the body damage cameras enable your shop to capture 40 or more images per vehicle in the same time it takes to check wheel alignment.



- ✓ Save your shop thousands of dollars in false vehicle-damage claims
- ✓ Immediate access to your body damage camera images — no need to contact a third-party surveillance company and wait for the images

 Send to Collision Center

- ✓ **NEW! Easily send the vehicle body images to collision shop for a repair estimate**
- ✓ **Fully-integrated with Body Shop Booster**

**BODY SHOP
BOOSTER**

Use HunterNet® to quickly review vehicle images

- ✓ Intuitive body damage camera interface displays vehicle information and date of service
- ✓ Four cameras capture an average of 10 images each
- ✓ 15-day image storage standard
- ✓ Premium 90-day storage package available



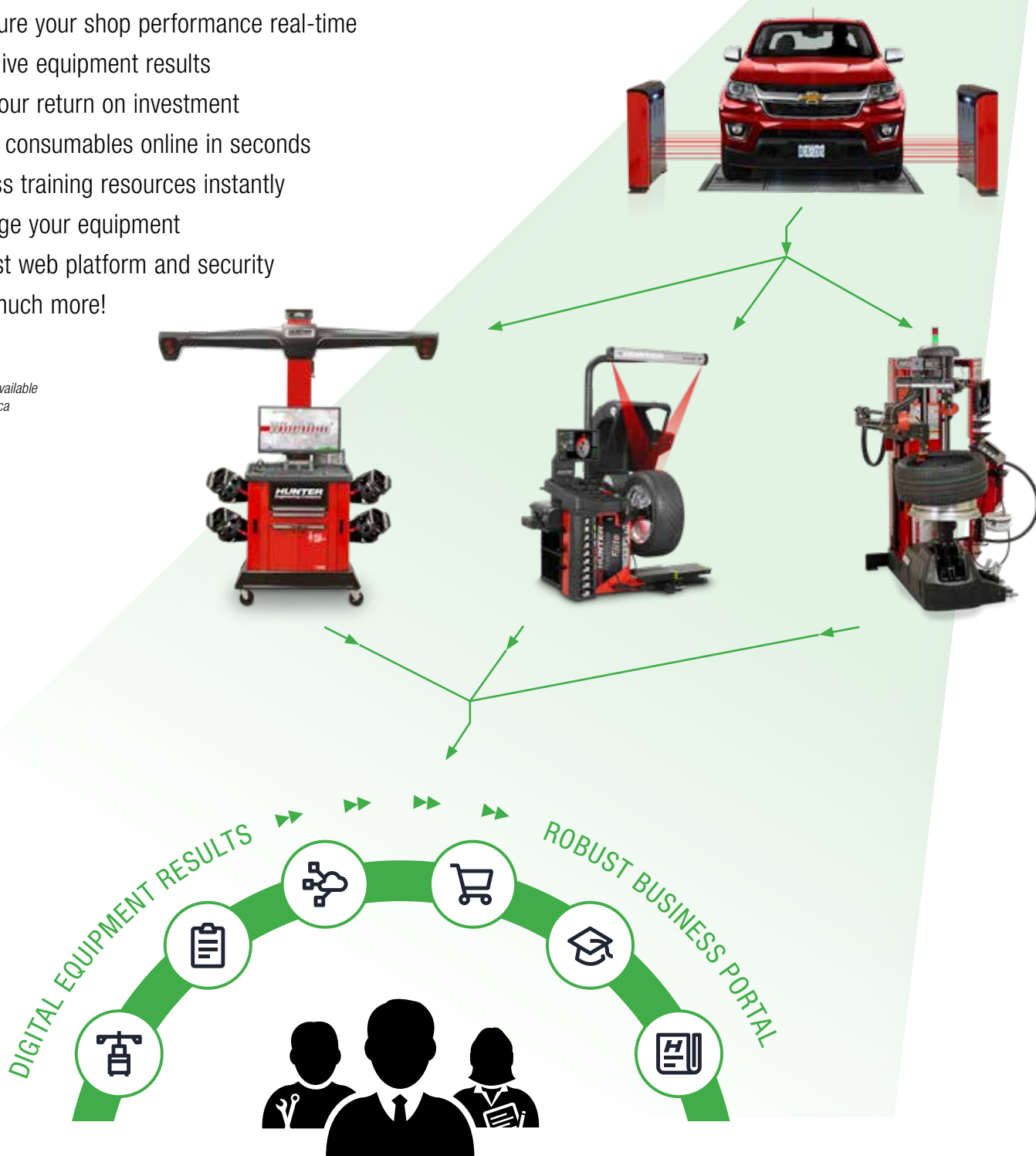
Did you know? Body damage cameras can save thousands of dollars per month on false damage claims. It is not uncommon for customers to be “mistaken” about when damage occurs.

A Fully-Connected Shop Powered by HunterNet® 2

There Is No Comparison*

- ✓ Measure your shop performance real-time
- ✓ View live equipment results
- ✓ See your return on investment
- ✓ Order consumables online in seconds
- ✓ Access training resources instantly
- ✓ Manage your equipment
- ✓ Robust web platform and security
- ✓ And much more!

* Currently only available
in North America



Configurations for Every Shop

Integrate Quick Check Drive® with flush-mounted Quick Tread Edge® to build the most profitable unmanned inspection system.

Entrance Configuration – RECOMMENDED



Exit Configuration



Middle Configuration

Site Considerations:

- ✓ Hardwired internet connection required for Quick Check Drive®
- ✓ Weather protection recommended as warranted by local conditions
- ✓ Impact protection recommended as warranted by lane layout
- ✓ Body cameras and vehicle ID performance require uniform and reasonably bright lane lighting



Please see your Hunter Sales Representative for details

Be sure to check out other Hunter literature for more quality products from Hunter Engineering.

Quick Check, Quick Check Drive, Quick Tread, Quick Tread Edge, HunterNet, and WinAlign are registered trademarks of Hunter Engineering Company.



HUNTER
Engineering Company

www.hunter.com