



SEE THE WORLD IN A NEW WAY

INDUSTRIAL PRODUCT CATALOG

CONTENTS

1

INTRODUCTION

ABOUT HIKMICRO	04
COMPANY STRENGTHS	05
APPLICATIONS	08

2

HANDHELD THERMAL CAMERA

MINI SERIES <small>NEW</small>	14
ECO SERIES	18
B SERIES	22
POCKET SERIES	24
M SERIES <small>NEW</small>	26
GX1 SERIES	28
SP SERIES <small>NEW</small>	30

3

FIREFIGHTING THERMAL CAMERA

FB21	34
FT31	36

4

INTRINSICALLY SAFE

BX20	40
------------	----

5

ACOUSTIC SERIES

AI SERIES	44
-----------------	----

AD21P <small>NEW</small>	46
--------------------------------	----

6

SOFTWARE SUPPORT

HIKMICRO VIEWER	50
-----------------------	----

HIKMICRO ANALYZER	51
-------------------------	----

ABOUT HIKMICRO

HIKMICRO is a leading provider of thermal imaging equipment and solutions. Specializing in thermal technology innovation, the company offers thermal cores, modules, cameras, total solutions, and also night vision products, which can be used in outdoor, industrial, and security industries globally, serving customers in over 100 countries and regions.



COMPANY STRENGTHS

| Industry Leading Warranty

HIKMICRO provides a 3-10-2* warranty period (from the date of purchase) that exceeds the industry standard level of handheld thermography products. For more information, please visit our website.

- ♦ 3 years components and labor coverage for the full product.
- ♦ 10 years of coverage for the detector - the most important part of the whole product!
- ♦ 2 years of coverage for the rechargeable battery.



*We offered an extra 2-year extended warranty for firefighting thermal cameras, with a 5-10-2 warranty period.

| Local Repair Service

- ♦ HIKMICRO provides customers with comprehensive maintenance services and responds to failures in the shortest possible time, minimizing camera downtime.

| Local Support and Training Service

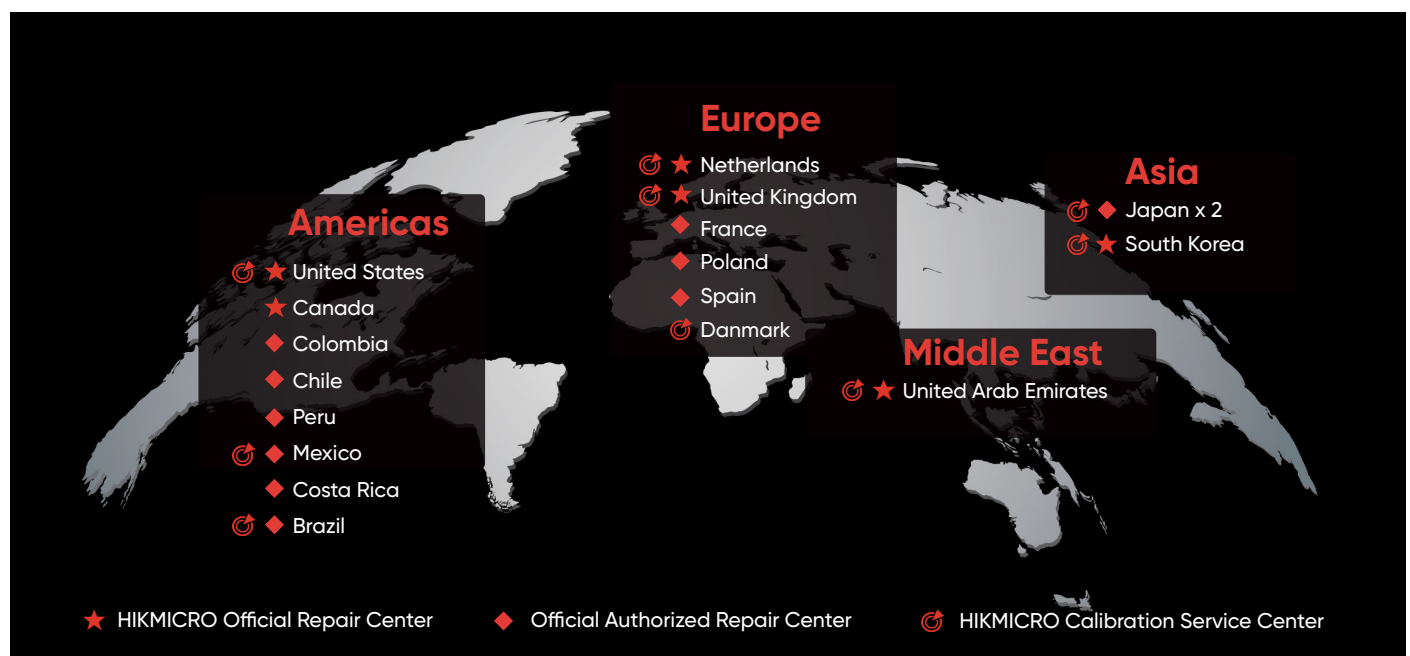
- ♦ International subsidiaries and local offices provides localized marketing and technical support. Professional technicians train the staff of authorized stores regularly.
- ♦ HIKMICRO provides technical consultation via the official website, email, and 24-hour hotline.

| Global Calibration Services

- ♦ HIKMICRO is pleased to offer calibration services through one of our global sites or factory-authorized service centers. Contact your local office for details.

18 REPAIR / CALIBRATION 4 DISTRICTS

Our service doesn't end at the sale



PRODUCT STRENGTHS

| Image Frequency

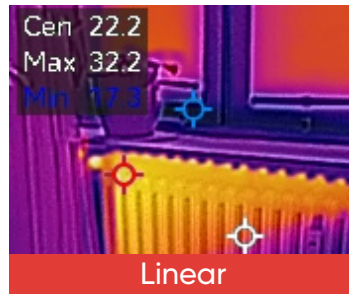
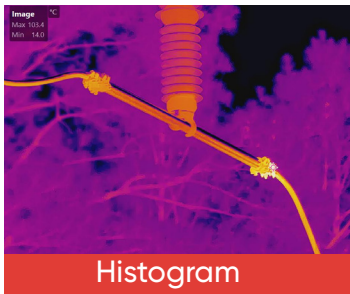
With a minimum of 25 Hz and some systems up to 50 Hz, you'll experience ultra-smooth video and measurements while panning across scenes or viewing moving targets.

| Accuracy

Up to $\pm 1^{\circ}\text{C}$ accuracy and repeatable temperature measurements based on our high stability detector, optics design, and quality control.

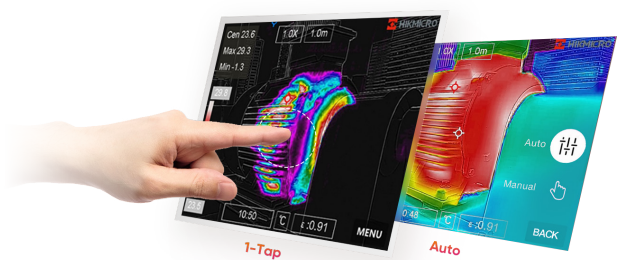
| HIKMICRO advanced algorithms

Linear and histogram color distribution is one of the HIKMICRO image enhancement algorithms, which can measure high or low-temperature targets in different scenarios and create sharp thermal images for more accurate and reliable measurements.



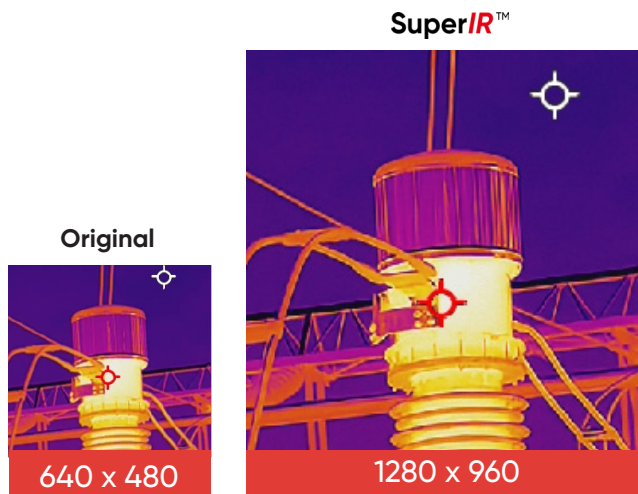
| 1-Tap Level & Span

Allows you to focus on one area of the image by narrowing the span with 1-Tap of the screen and reducing background noise.



| SuperIR™

HIKMICRO SuperIR achieves up to 4 times more pixels through our proprietary neural network technology, which boosts image quality, enhances image details, sharpens edges, and reduces image noise.

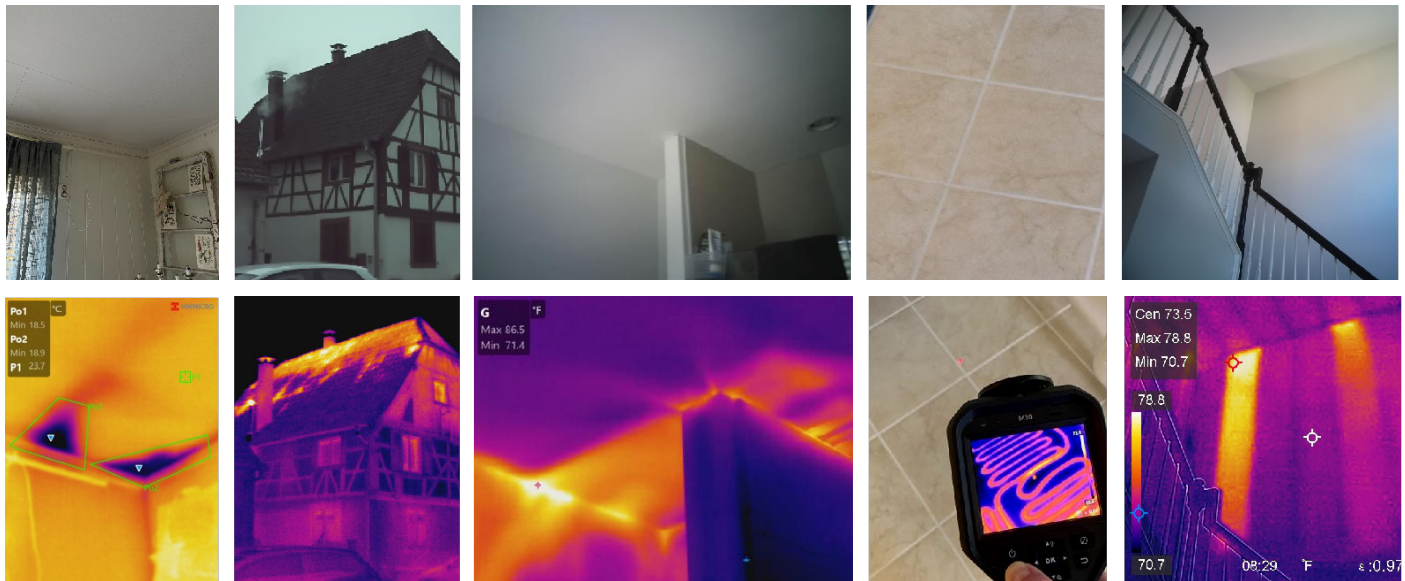


BUILDING INSPECTION APPLICATION



In building inspections, missing or damaged insulation, building envelope air leaks, and moisture intrusion can be very difficult to find before they become serious enough to damage or destroy building contents. Thermal cameras can and have been utilized in the discovery of otherwise undetectable heat, air, and moisture anomalies in all types of structures.

WHAT WE SEE



Water Leaks

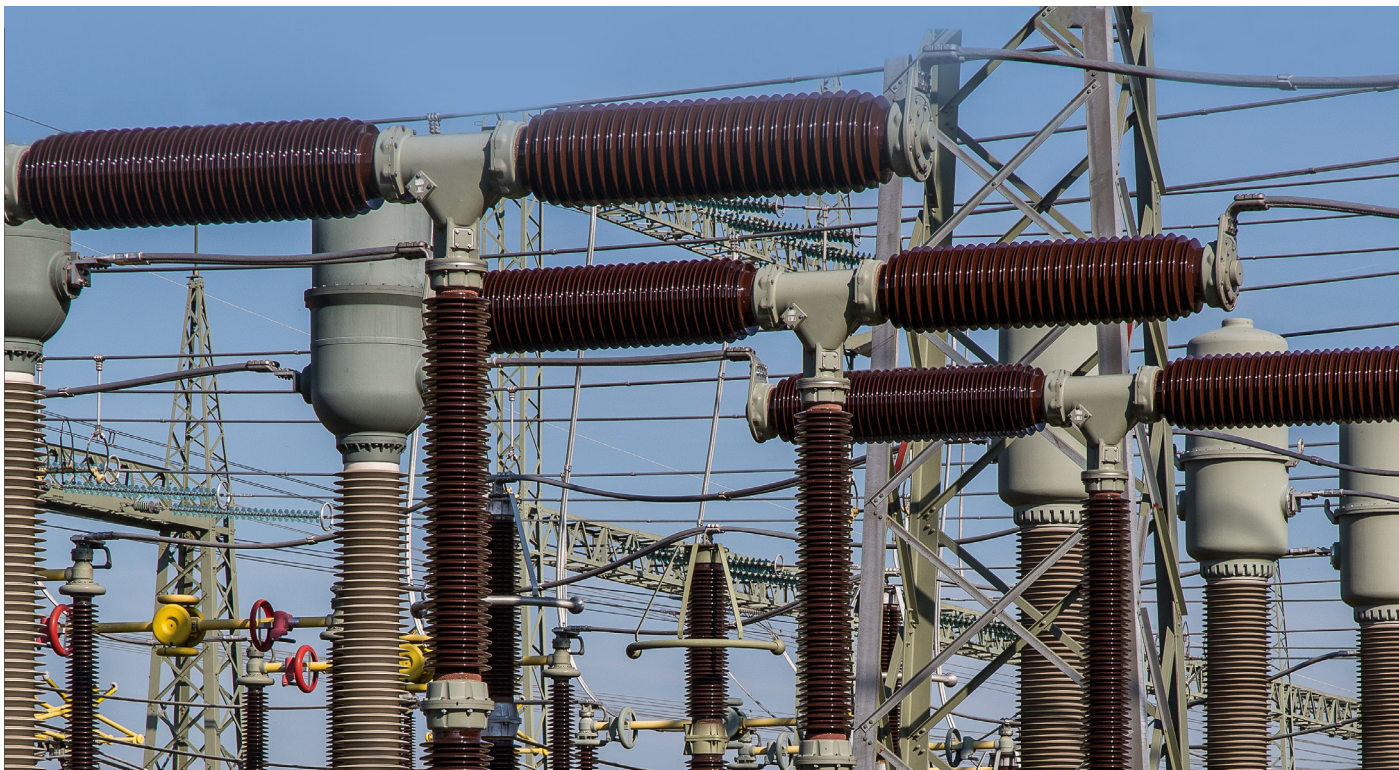
Heat Loss

Air Leaks

Radiant Floor Heating

Insulation Voids

ELECTRIC UTILITIES APPLICATION

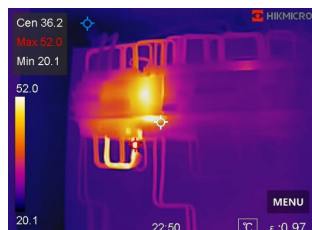


Managing equipment and assets associated with the transmission and distribution of electrical energy is critical to long term system efficiency and safety. Thermal imaging enables added safety inspections, proactively inspect, monitor, and plan for routine maintenance before small issues become catastrophic.

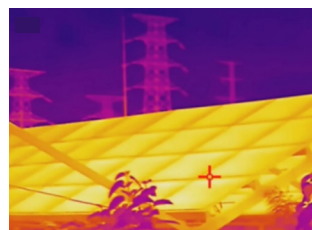
WHAT WE SEE



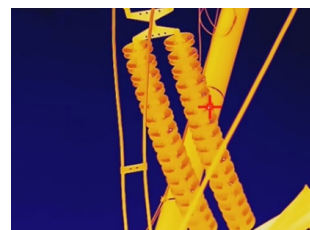
Hot Bushing



Hot Breaker



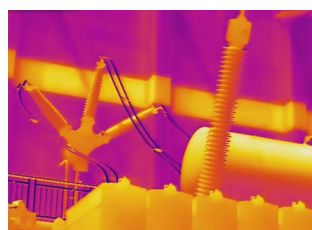
Solar Panel Inspection



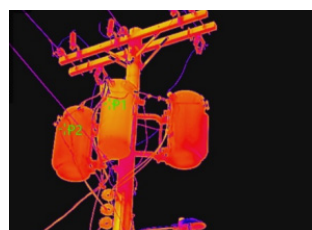
Insulator



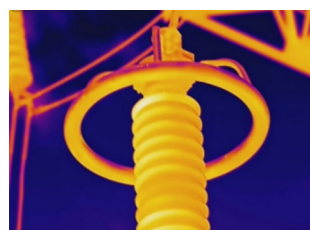
Connector Issues



Isolating Switch



Transformer Temp



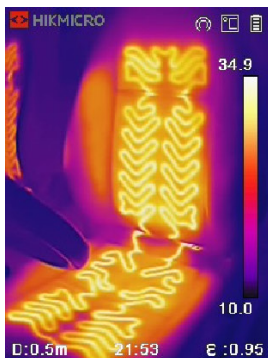
Surge Arrester

AUTOMOTIVE APPLICATION

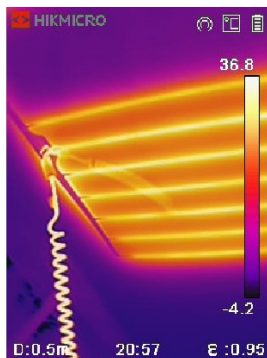


Thermal imaging brings hidden details to the forefront and isolates the issues prior to any disassembly saving countless hours in the process. Quickly check items including passenger comfort systems, defog/deice operations, parasitic voltage draw, bearings/gears, cooling/radiators, exhaust systems, tire wear, and differences in combustion processes between cylinders.

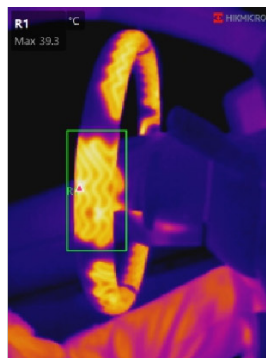
WHAT WE SEE



Seats Heater
Seat Heater Operation



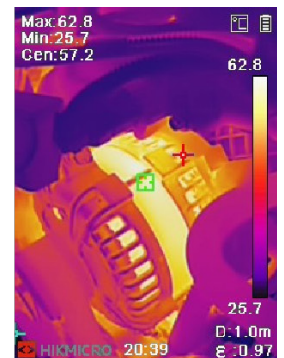
Window Heater



Wheel Heater
Steering Wheel Heat



Front Tire
Tire Heat And Wear
Pattern



Engine
Engine Systems

ELECTRICAL COMPONENTS APPLICATION



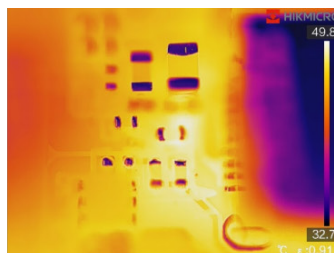
Various types of tests and inspections are performed through traditional methods to detect defects, problems, and failures in PCBs that require improvement. But traditional methods have usually proven to be low efficiency, health hazards, complicated, and low definition.

A thermal imager with a macro lens has proven to be an efficient and reliable tool for solving a wide range of component-level defects. A macro lens specifically allows you to focus extremely close to magnify and display the items at the micron level of detail. Get an incredibly detailed image of very small objects so you can gain insight into thermal buildup and dissipation on printed circuit boards, identify a faulty or undersized component, or potentially even pinpoint precise faulty locations on electrical equipment.

WHAT WE SEE



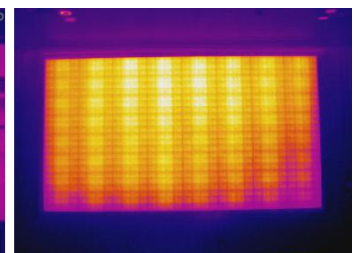
PCB



PCB



PCB



PCB

HANDHELD THERMAL CAMERAS

Handheld thermal cameras are an ideal solution that provides accurate non-contact temperature measurement and heat distribution image display for electrical predictive maintenance, building inspection, HVAC inspection, manufacturing monitor, etc. HIKMICRO's industrial handheld thermal cameras have been used widely in detecting temperature anomalies before a fire starts, detecting radiator efficiency for HVAC inspection, searching for heat loss in buildings, and finding hot spots and invisible defects on mechanical or electrical systems that could indicate a potential problem. They are also used for surveying areas that are hard to reach with conventional measurement tools.

MINI SERIES

Make your phone smarter with HIKMICRO Thermal



Mini Series for **Android** and **ios** Smartphone and Tablet
(*Mini3 only for Android)



VISIT OUR WEBSITE

● Mini2 V2/ Mini2Plus V2 /
Mini3

Multiple Product Options

The Mini series offers wide-angle and manual focus options. The Mini2 V2 with its 50° wide-angle lens is ideal for quickly scanning walls, facades, and large objects. The Mini2Plus V2 and Mini3 with manual focus lens provide a clear view of small objects such as electronic components or distant large objects like electrical or mechanical equipment from a safe distance.



Superior Image Clarity & Smooth Video

Mini Series features a highly sensitive (NETD < 30 mK) VOx detector with a resolution of 384 x 288 (110,592) pixels, along with optimized image enhancement algorithms to provide clear thermal images.



Professional Viewer APP

HIKMICRO Viewer app allows you to generate reports in the field quickly, customize job site data, adjust measurement settings, add annotations, and share with customers or managers.



User-Friendly Experience

Instantly attaches to your Android and ios smartphone or tablet and is ready to go in seconds (*Mini3 only for Android). The HIKMICRO Mini series is battery-free so you'll never need to charge it up or find a charger cable. It's powered by your phone, designed to run on very little power to maximize your mobile device run time, and ready whenever you are.



Portable yet Durable

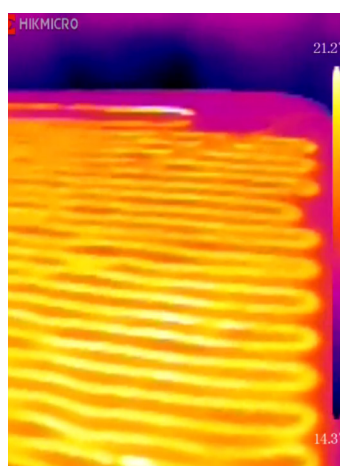
Designed for where you work, live, or relax. It'll fit in your pocket, tool bag, or anywhere convenient for quick and easy access. With IP40-rated aluminum alloy housings, pass strict drop tests up to 1 meter (3.3 feet), allowing you to work with confidence in most work environments.



Multiple Practical Accessories

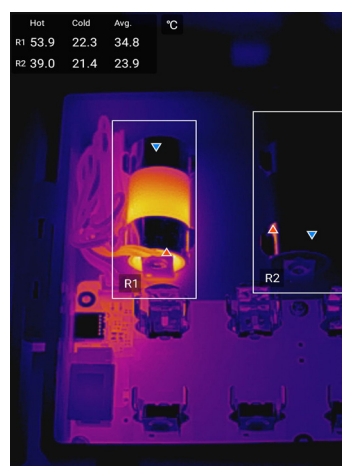
A 40 cm (15.75 in) extending cord connects between your device and the camera allowing remote viewing, and inspection through narrow, confined openings, or difficult-to-reach places. Also included is an 18 mm extended connector to accommodate smartphones or tablets in a protective case. A protective case is provided for storing your camera and keeping it free of scratches.

APPLICATIONS



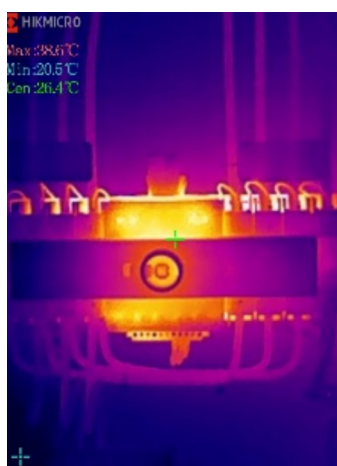
Home Inspection

Shooting with Mini2 V2



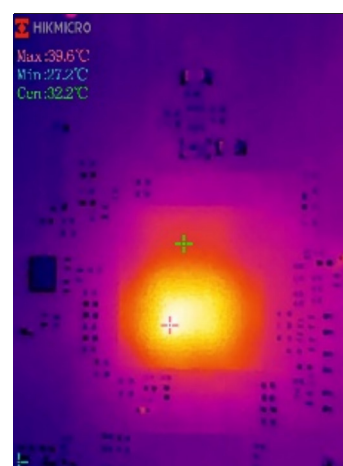
Electrical Fuse

Shooting with Mini2Plus V2



Electrical Inspection

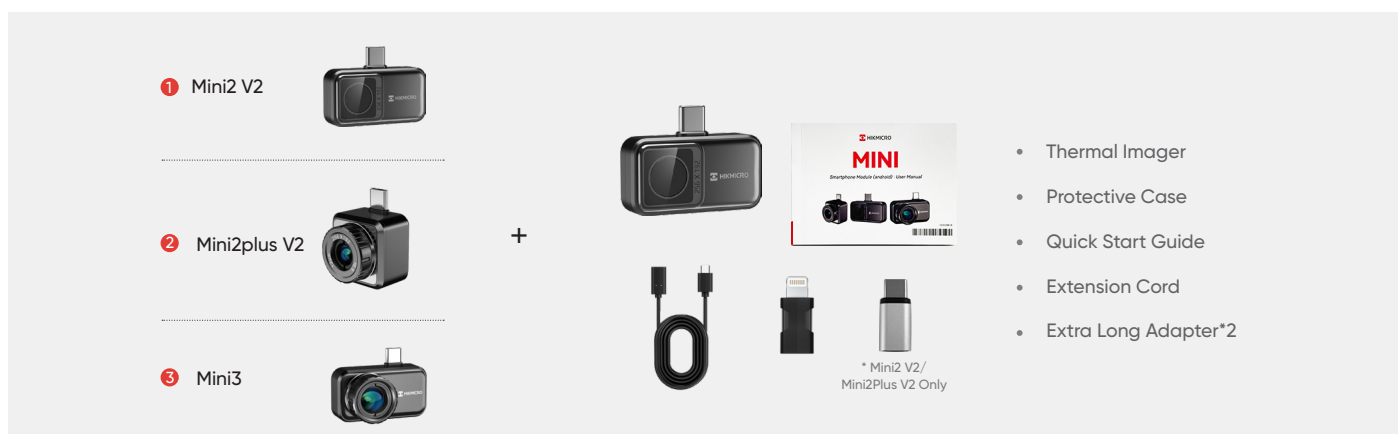
Shooting with Mini3



PCB Board Detection

Shooting with Mini2Plus V2

WHAT'S IN THE BOX



Model No		Mini2 V2	Mini2Plus V2	Mini3
Infrared Image	IR Resolution	256 × 192 (49,152 pixels)		384 × 288 (110,592 pixels)
	SuperIR	Yes, on captured images and live view		N/A
	NETD	< 40 mK (@ 25 °C, F#=1.0)		< 30 mK (@ 25 °C, F#=1.0)
	Image Frequency	25 Hz		25/50HZ, switchable
	Focal Length	3.5 mm	6.9 mm	10 mm
	Field of View (FOV)	50° × 37.5°	25° × 18.8°	26° × 19°
	Focus Mode	Focus Free	Manual Focus	Manual Focus
Measurement and Analysis	Object Temperature Range	-20 °C to 400 °C (-4°F to 752°F)		-20°C to 650°C(-4°F to 1202°F)
	Accuracy	Max (±2°C/3.6°F, ±2%), applicable 60 sec after start-up when the ambient temperature 15°C to 35°C (59°F to 95°F) and object temperature above 0°C (32°F)		
	Measurement Tools	Center Spot, Hot Spot, Cold SpotUser-definable: 3 spots, 1 line, and 3 rectangles.		
General	Weight	Approx. 20 g (0.044 lb)	Approx. 26 g (0.057 lb)	Approx. 45 g (0.099 lb)
	Dimension	42 x 22.5 x 11.2 mm (1.38 x 0.74 x 0.37 in)	26.6 x 26.6 x 24 mm (1.05 x 1.05 x 0.95 in)	47.6 x 26 x 26.59 mm (1.87 x 1.02 x 1.05 in)
	Compatibility	Android/iOS		Android

*Data is subject to change without notice. The thermal pictures are for reference only, the actual effect shall prevail.

Mini-X

Wireless Dual Camera Thermal Imager, Crisp Focus from Near to Far



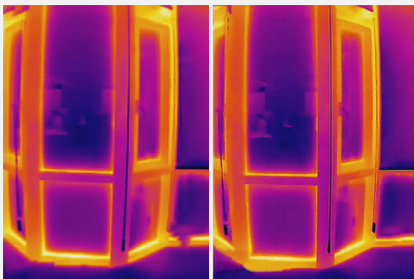
For Android and iOS Smartphone and Tablet



VISIT OUR WEBSITE

SuperIR™

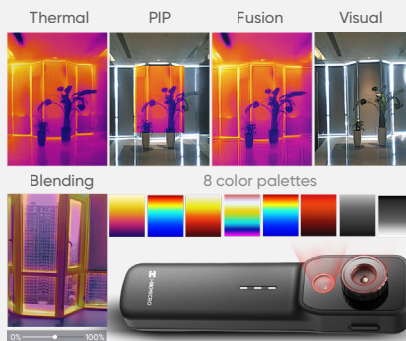
HIKIMICRO Mini-X features a highly sensitive (NETD < 40 mK) VOx detector with a resolution of 256 x 192 (49,152) pixels, along with optimized image enhancement algorithms to provide clear thermal images.



SuperIR™ ☐ OFF SuperIR™ ☒ ON

Dual Camera Thermal Imager

The high-resolution IR and visual cameras uncover hidden details with 5 image modes & 8 color palettes.



Stable Wireless Connection, Wide Compatibility

HIKIMICRO Mini-X thermal camera connects to Android/iOS devices, no need to replace it when switching phones.



Easy and Stable Wireless Connection

Mini-X thermal camera simply scan a QR code for a quick wireless connection and enjoy stable image transmission.



Compact, Ergonomic, Versatile Mounting

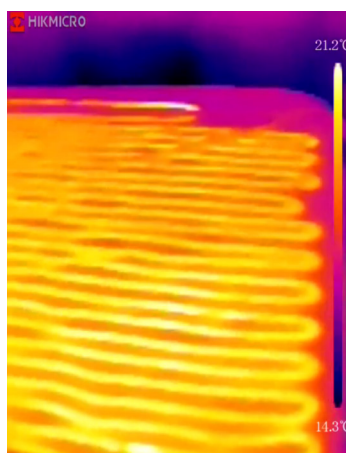
The HIKIMICRO Mini-X features a portable, ergonomic design with four mounting options: magnetic, wall, tripod, and clamp, offering flexibility for any task.



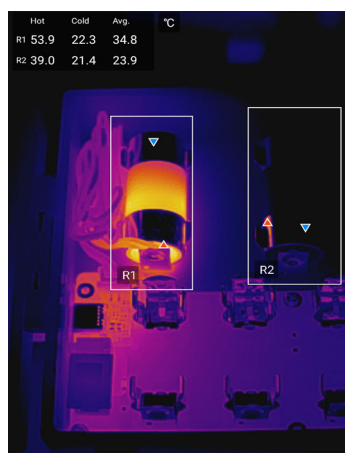
Wide and Accurate Temperature Reading

The Mini-X offers a wide temperature range of -20°C to 550°C, with precise measurement reading of $\pm 2^{\circ}\text{C}$ / $\pm 3.6^{\circ}\text{F}$ or $\pm 2\%$. It automatically tracks spot/line/area temperature, providing instant readings.

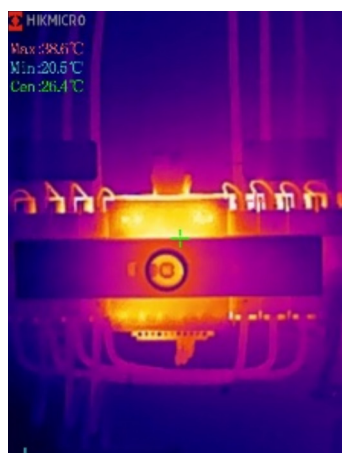
APPLICATIONS



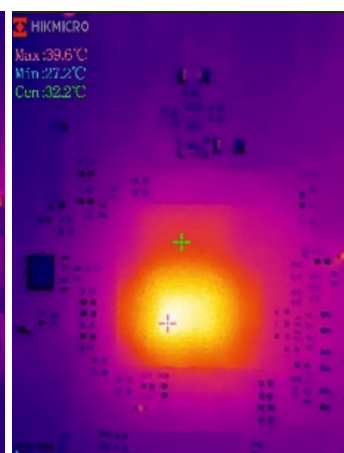
Home Inspection



Electrical Fuse



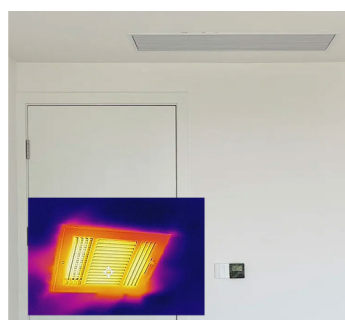
Electrical Inspection



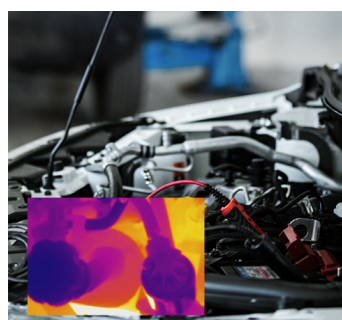
PCB Board Detection



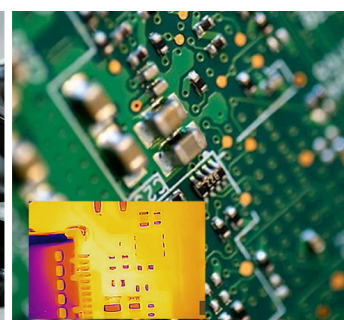
Solar Panel Maintenance



HVAC Maintenance

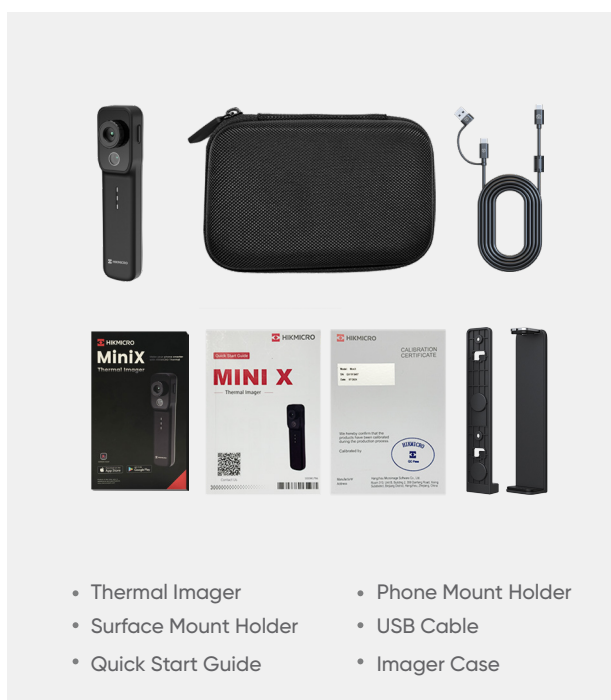


Automotive Service



PCB

OPTIONAL ACCESSORIES



- Thermal Imager
- Surface Mount Holder
- Quick Start Guide
- Phone Mount Holder
- USB Cable
- Imager Case

Camera Highlights		Mini-X
Infrared Image	IR Resolution	256 × 192 (49,152 pixels)
	SuperIR	Yes, on Captured Thermal Images
	NETD	<0.04°C / NETD< 40mK
	Image Frequency	25 Hz
	Focal Length	3.6 mm
	Field of View (FOV)	37.2° × 50.0°
	Focus Mode	Manual Focus
Measurement and Analysis	Object Temperature Range	-20 °C to 550 °C (-4°F to 1022°F)
	Accuracy	Max (±2°C/3.6°F, ±2%), for the ambient temp. 15°C to 35°C (59°F to 95°F) and object temp. above 0°C (32°F)
	Measurement Tools	Center Spot, Hot Spot, Cold Spot User-definable: 3 spots, 3 rectangles and 1 line
General	Power Supply	USB-C (5V/2A)
	Wi-Fi	802.11 b/g/n (2.4 GHz and 5 GHz)
	Battery Operating Time	Approx. 4 hours
	Weight	Approx. 158 g (0.35 lb)
	Compatibility	Android / iOS

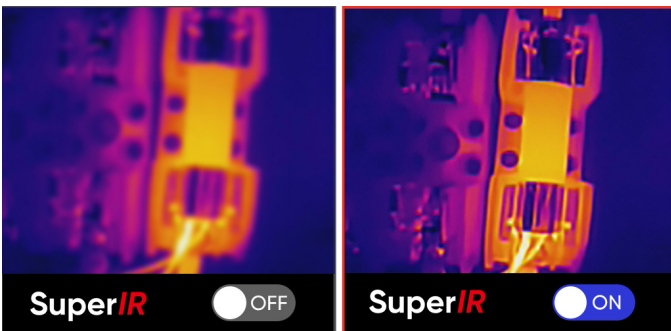
ECO SERIES

IR Performance, Surprisingly Affordable, and Absolutely Brilliant



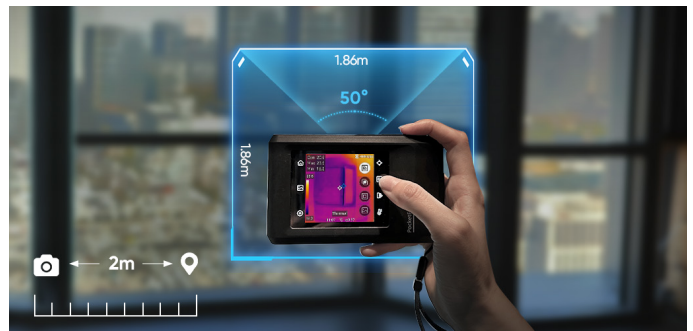
Enhanced Thermal Clarity with SuperIR

Powered by HIKMICRO SuperIR image enhancement technology, it upscales thermal image from 96×96 (9,216 pixels) to 240×240 (57,600 pixels) resolution when **viewing live with 25 Hz** fast image frequency and capturing.



50° Wide Angle Lens

Scan large areas quickly with the **50° wide angle lens** to find issues like air infiltration, water leaks, and insulation issues.



Rugged and Durable

Features **IP54**-rated form factor, passes strict drop tests up to 2 meters (6.56 feet) and comes with a three-year warranty.



High Image Quality with Smooth Video

High Sensitivity IR sensor (NETD $< 0.05^{\circ}\text{C}$ / NETD $< 50\text{mK}$) provides you with high image quality, easier-to-spot subtle heat loss or gain, and delivers high image quality. **25 Hz** fast image frequency delivers smooth video while panning across scenes or viewing moving targets.



Multiple Image Modes

Eco-V and PocketE featured both an IR camera and a visible camera, allowing you to switch multiple image modes (Thermal, Visual, PIP, Fusion, or Blending) and save visual and thermal images simultaneously in one click. Provide you with efficient workflow and a fast inspection report.

Eco

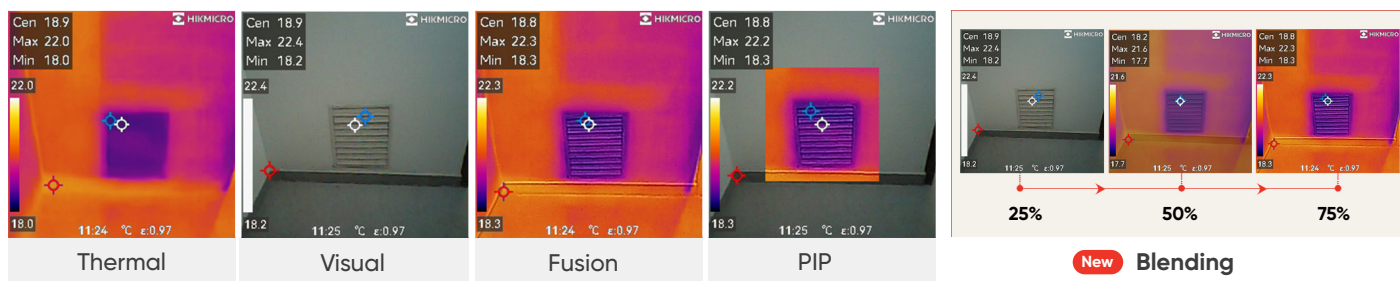
- Thermal Only

Eco-V

- Thermal & visible dual-camera
- Thermal/Visual/Fusion

PocketE

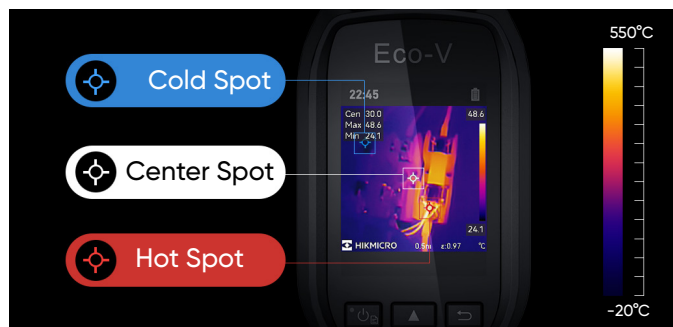
- Thermal & visible dual-camera
- Thermal/Visual/Fusion/PIP/Blending



KEY FEATURES (Eco & Eco-V only)

Full-screen Precise and Wide Temperature Measurement

Supports capture of full-screen radiometric images and automatically tracks max/min/center spots to pinpoint temperature anomalies at a glance. Accurately measures temperatures from **-20°C (-4°F) to 550°C (1022°F)**, with a temperature accuracy up to $\pm 2^{\circ}\text{C}$ ($\pm 3.6^{\circ}\text{F}$) or $\pm 2\%$ of reading.



- Automatic Spot tracker

8 Hrs. Continuous Runtime

Built-in 3350mAh Li-Ion rechargeable battery and thoughtful auto power-off settings (**10/20/30/40/50/60 minutes**) allow the camera up to 8 hours of continuous operation.



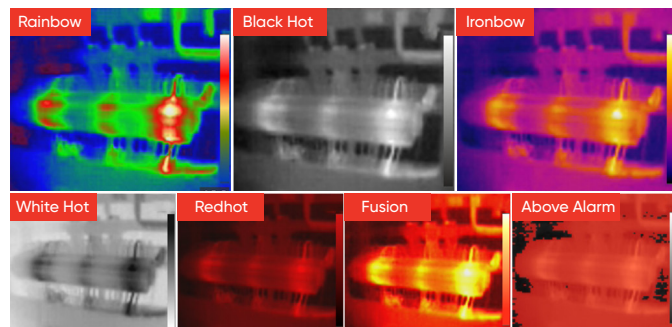
Locate with Laser Pointer

Helps show the position of the center point on actual object.



7 Color Palettes

Offers White Hot, Black Hot, Rainbow, Ironbow, Redhot, Fusion & Above Alarm 7 color palettes so you can choose the ideal color scale for your job.



KEY FEATURES (PocketE only)

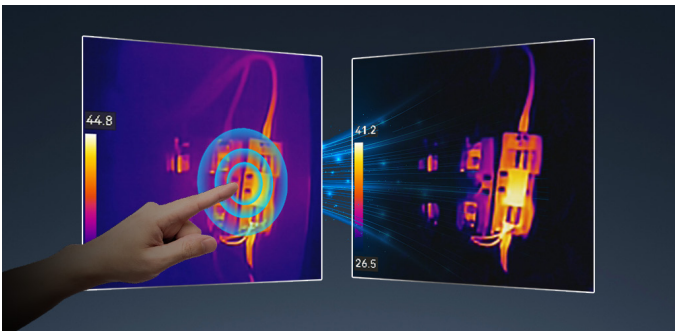
Portable Pocket-sized with Touch Screen

Easy to carry and hold. Perfectly fit in pockets and any toolboxes. View the details of your images on the large, intuitive **LCD 3.5"** touch screen.



1-Tap Level & Span

Just tap an area of interest on the screen and it instantly increases image contrast and highlights potential problems.



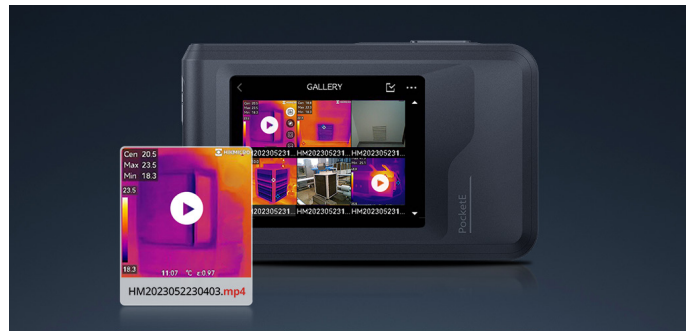
Wireless Connectivity

Screen stream and download on-device images with **Wi-Fi** to your smartphone or tablet with HIKMICRO Viewer.



On-camera Recording

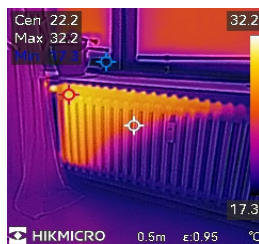
The built-in **4GB** eMMC flash storage can store approx 30,000 standard thermal/visual images or 20 hours of **MP4 video**. And, it allows onboard recording and playback.



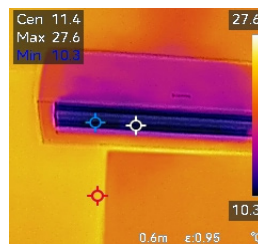
DISCOVER APPLICATIONS



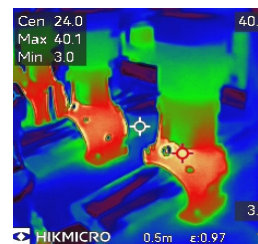
Building



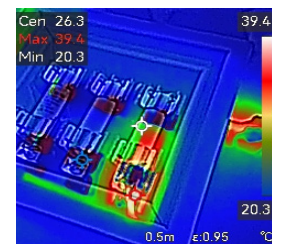
Heating



Air Conditioning

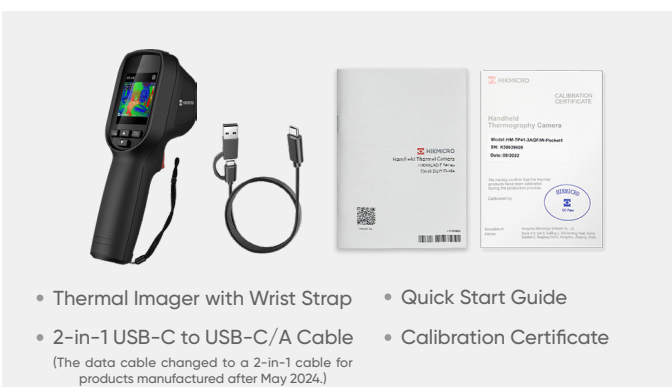


Maintenance



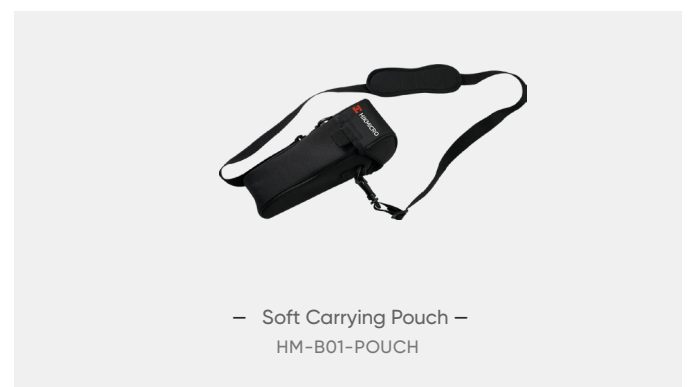
Electrical

WHAT'S IN THE BOX (Eco & Eco-V)



- Thermal Imager with Wrist Strap
 - Quick Start Guide
 - 2-in-1 USB-C to USB-C/A Cable
 - Calibration Certificate
- (The data cable changed to a 2-in-1 cable for products manufactured after May 2024.)

OPTIONAL ACCESSORIES (Eco & Eco-V)



- Soft Carrying Pouch —
HM-B01-POUCH

WHAT'S IN THE BOX (PocketE)



– Thermal Imager with Wrist Strap –



– Soft Carrying Pouch –



– 2-in-1 USB-C to USB-C/A Cable –

(The data cable changed to a 2-in-1 cable for products manufactured after May 2024.)



– Quick Start Guide –



– Calibration Certificate –

Camera Highlights		Eco	Eco-V	PocketE
Infrared Image	IR Resolution	96 × 96 (9,216 pixels)		
	SuperIR	240 × 240 (57,600 pixels), on Live View and Captured Images		
	NETD	< 50 mK (@ 25 °C, F#=1.0)		
	Image Frequency	25 Hz		
	Field of View (FOV)	50° × 50°		
	Focus Mode	Focus Free		
Image Display	Visual Camera	N/A	640 × 480 (307,200 pixels)	640 × 480 (307,200 pixels)
	Image Modes	Thermal	Thermal/Fusion/Visual	Thermal/Visual/Fusion/PIP/Blending
	Display	240 × 320 Resolution, 2.4" LCD Screen		320 × 240 Resolution, 3.5" LCD Touch Screen
Measurement and Analysis	Object Temperature Range	-20°C to 550°C (-4°F to 1022°F)		-20°C to 350°C (-4°F to 662°F)
	Accuracy	Max (±2°C/3.6°F, ±2%) at ambient temperature 25°C (77°F) and object temperature above 0°C (32°F)		
Data Storage and Communication	Storage Media	Built-in 4 GB flash memory		
	File Format	Radiometric JPEG		Radiometric JPEG, MP4
	Storage Capacity	Approx. 30,000 Images		Approx. 30,000 Images, 20 hours videos
General	Wi-Fi	N/A		802.11 b/g/n (2.4 GHz)
	Battery Operating Time	Approx. 8 hours		Approx. 4 hours
	Led Flashlight	N/A		Yes
	Laser Pointer	Yes		N/A
	Durability	IP54, 2 m (6.56 ft) drop protection		
	Weight	Approx. 290 g (0.64 lb)		Approx. 218 g (0.481 lb)

B SERIES

Compact and easy-to-use thermal camera for daily operation



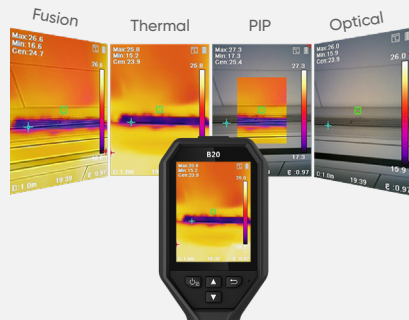
Enhanced Image Quality with SuperIR

B20S features a resolution of up to 256 x 192 (49,152) pixels and upgrades the display resolution to 640x480, ensuring exceptional image quality. With a fast image frequency of 25 Hz and advanced real-time SuperIR image enhancement algorithms, B20S delivers a clear and detailed thermal view.



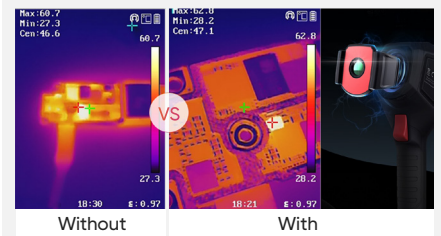
Multiple Image Modes

Fusion, Thermal, PIP and Visual modes to suit your preferred view. (B11, B20 only)



Innovative Macro Mode

Using a clip-on macro lens, the B series cameras can see details as small as 500 microns and allow you to take accurate temperature readings on small objects, such as components on printed circuit boards or assemblies.



3.2" Color LCD

View the details of your images on the large, class-leading LCD screen.



Efficient Temperature Measurement

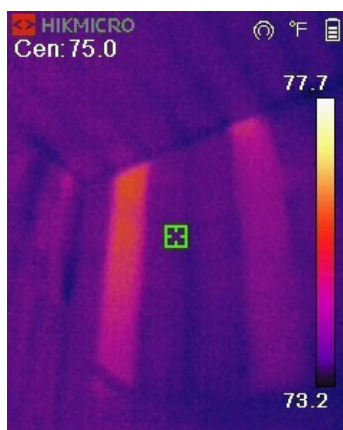
Track the temperature of Center, Hot, Cold spot and 3 Custom spots automatically.



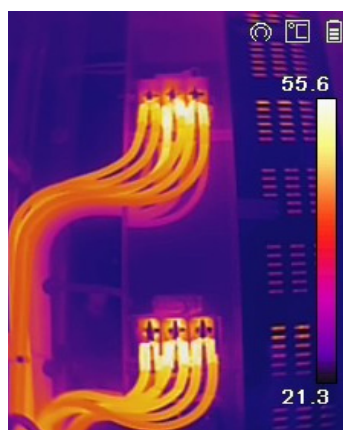
Wi-Fi Connectivity

Connect to mobile devices via built-in Wi-Fi and the HIKMICRO Viewer App to quickly share your images.

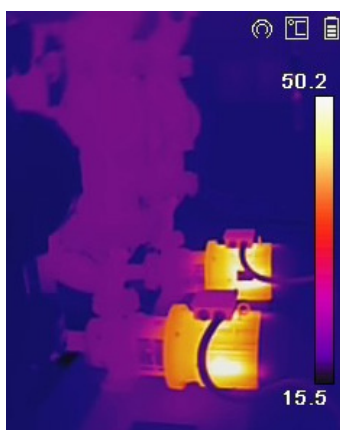
APPLICATIONS



Building Envelope



Electrical Cabinet

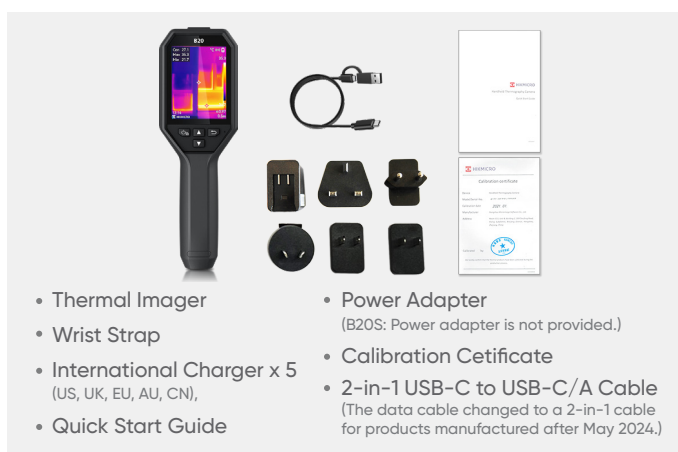


Mechanical Inspection



Automotive Inspection

WHAT'S IN THE BOX



OPTIONAL ACCESSORIES



– B Series Macro Lens –
HM-B201-MACRO



– E/B Series POUCH –
HM-B01-POUCH

Camera Highlights		B21L	B20	B20S
Infrared Image	IR Resolution	256 × 192 (49,152 pixels)		
	SuperIR	Yes, on Captured Thermal Images		Yes, on captured images and live view
	NETD	<0.04°C / NETD< 40mK		
	Image Frequency	25 Hz		
	Field of View (FOV)	37.2° × 50.0°	37.2° × 50.0°	
	Focus Mode	Focus Free		
Image Display	Visual Camera	N/A	1600 × 1200 (2 MP)	
	Image Modes	Thermal	Thermal/Visual/PIP/Fusion	
	Display	240 × 320 Resolution, 3.2"LCD Screen		480 × 640 Resolution, 3.2" LCD Screen
Measurement and Analysis	Object Temperature Range	-20 °C to 550 °C (-4°F to 1022°F)		
	Accuracy	Max (±2°C/3.6°F, ±2%), for the ambient temp. 15°C to 35 °C (59 °F to 95 °F) and object temp. above 0 °C (32°F)		
Data Storage and Communication	Storage Media	Built-in 16 GB flash memory		
	File Format	Radiometric JPEG		
	Storage Capacity	Up to 90,000 images		
General	Durability	2m (6.56 ft) drop test, IP54		
	Wi-Fi	802.11 b/g/n (2.4GHz)		
	Led Flashlight	N/A	Yes	
	Laser Pointer	Yes	N/A	
	Battery Operating Time	Approx. 6 hours		

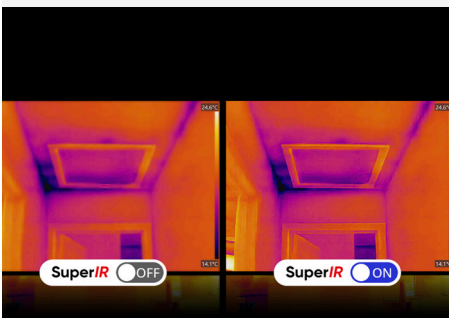
POCKET SERIES

Portable pocket-sized design and fits in any pocket



Enhanced Image Quality with SuperIR

Designed with a highly sensitive (NETD < 40 mK) VOx detector and features a resolution of 256 x 192 (49,152) pixels, ensuring exceptional image quality. With a fast image frequency of 25 Hz and advanced real-time SuperIR image enhancement algorithms, this device delivers a clear and detailed thermal view.



Easy User Interface

Brilliant 3.5" 640x480 Touchscreen simplifies operations, including advanced 1-Tap Level and Span mode, instantly improving image contrast and highlights potential problems.



Fast Communication

Connect (Wi-Fi or Hotspot) to HIKMICRO Viewer App for transmitting pictures from camera to mobile phone. Analyze, share images, and generate reports in real-time.



On-camera Recording

Built-in 16 GB internal memory provides onboard recording and playback.



Continuous Digital Zoom

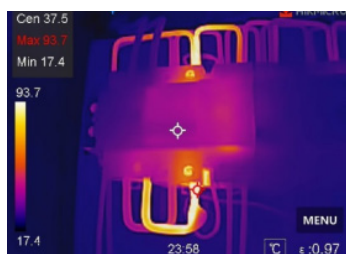
1.0x to 4.0x continuous digital zoom provides more image details.



Intuitive Interface

Swipe down or touch the icons to access all camera features and settings

APPLICATIONS



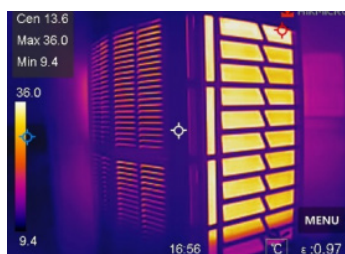
Electrical Cabinet



Check Machine Temperature

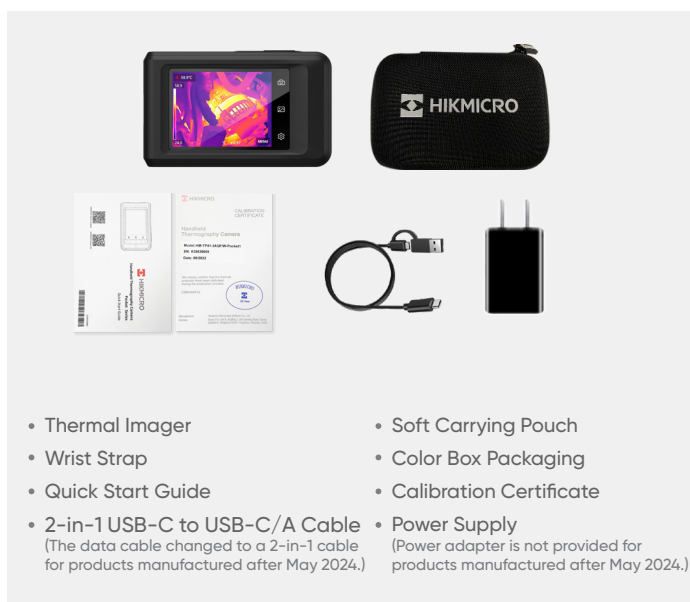


Building Envelope



HVAC Inspection

WHAT'S IN THE BOX



OPTIONAL ACCESSORIES



Model No		Pocket2
Infrared Image	IR Resolution	256 × 192 (49, 152 pixels)
	SuperIR	Yes, on captured images and live view.
	NETD	< 40 mK (@ 25 °C, F#=1.0)
	Image Frequency	25 Hz
	Field of View (FOV)	50° × 37.2°
	Focus Mode	Focus Free
Image Display	Visual Camera	3264 × 2448 (8 MP)
	Image Mode	Thermal/Visual/Fusion/PIP/Blending
	Display	640 × 480 Resolution, 3.5" LCD Touch Screen with auto-rotation
Measurement and Analysis	Object Temperature Range	-20°C to 400°C (-4°F to 752°F)
	Accuracy	Max (±2°C/3.6°F, ±2%), for the ambient temp. 15°C to 35 °C (59 °F to 95 °F) and object temp. above 0 °C (32°F)
Data Storage and Communication	Storage Media	Built-in 16 GB flash memory
	File Format	Radiometric JPEG, MP4
	Storage Capacity	Up to 60,000 Images, 54 hours videos
General	Durability	2m (6.56 ft) drop test, IP54
	Wi-Fi	Yes
	Led Flashlight	Yes
	Battery Operating Time	Approx. 4 hours

M SERIES

Advanced thermal imaging camera with full function analysis



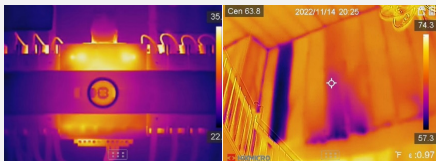
SuperIR™



VISIT OUR WEBSITE

Multiple Product Options

M series products provide wide-angle and manual focus options. The manual focus with a larger focal length option (without "W") is ideal for electrical, HVAC, and mechanical inspection where focusing on specific components is critical. The "W" series features a fixed focus wide FOV making them ideal for scanning walls, floors, and large-scale items.

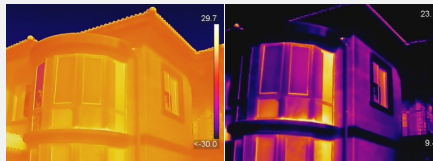


Without "W"

With "W"

1-Tap Level & Span

Quickly highlights the area of the image you are interested in by narrowing the span with one tap on the **3.5" LCD touchscreen**, instantly improving image contrast and highlighting potential problems.



Auto Level & Span

Manual / 1-Tap Level & Span

Interchangeable Battery System

Includes **2 interchangeable Li-ion batteries** and a dual bay charger to provide you with **up to 12 hours** of operation. You can stay powered up for even the longest inspections.



2 interchangeable Li-ion batteries



On-camera Analysis

Offers 17 measurement rules, 7 color alarm palettes and 4 image modes for powerful on-camera analysis.



Camera Interface

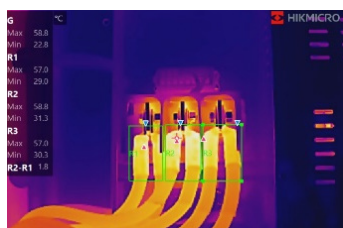
Intuitive 3.5" LCD Touch Screen or interactive buttons to easily navigate to any function. Use either or both!



Multiple Image Annotations

Support voice, text, and QR Code Scan annotations, helping to improve inspection efficiency and productivity.

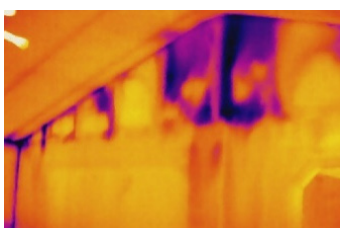
APPLICATIONS



Check Electrical



Check Underfloor Heating



Check Building Insulation

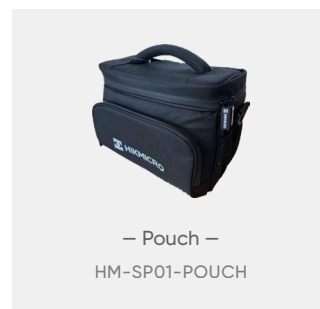
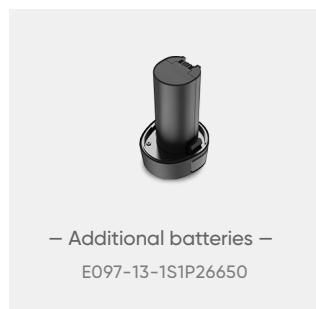


Check Mechanical Status

WHAT'S IN THE BOX



OPTIONAL ACCESSORIES



Model No	M11	M11W	M20W	M20	M31	M60
IR Resolution	192 × 144 (27,648 pixels)	192 × 144 (27,648 pixels)	256 × 192 (49,152 pixels)	256 × 192 (49,152 pixels)	384 × 288 (110,592 pixels)	640 × 480 (307,200 pixels)
SuperIR	192 × 144 (27,648 pixels)	192 × 144 (27,648 pixels)	512 × 384 (196,608 pixels)	512 × 384 (196,608 pixels)	768 × 576 (442,368 pixels)	1280 × 960 (1,228,800 pixels)
NETD	< 40 mK (@ 25 °C, F#=1.0)				< 30 mK (@ 25 °C, F#=1.0)	< 35 mK (@ 25 °C, F#=1.0)
Focal Length	6.9mm	3.6mm	3.5mm	6.9mm	6.4 mm	15mm
FOV	18.8° × 14.1°	37.2° × 27.8°	50° × 37.2°	25° × 18.8°	41.1°×30.5°	41.9° × 33.3°
Focus	Manual Focus	Focus Free	Focus Free	Manual Focus	Manual Focus	Manual Focus
Visual Camera	3264 × 2448 (8 MP)					
Min. Focusing Distance	0.1 m (0.33 ft)	0.5 m (1.64 ft)	0.5 m (1.64 ft)	0.1 m (0.33 ft)	0.1 m (0.32 ft)	0.3 m (0.98 ft)
Object Temp. Range	-20 °C to 550 °C (-4 °F to 1022 °F)				-20 °C to 650 °C (-4 °F to 1202 °F)	
Accuracy	Max. (± 2°C/3.6°F, ± 2%), for ambient temperature 15°C to 35°C (59°F to 95°F) and object temperature above 0°C (32°F)					
Wi-Fi	802.11 b/g/n (2.4 GHz and 5 GHz)					
Storage	Default Storage: Removable SD Card (16 GB) ; Max. Storage Capacity: 128 GB				Default Storage: Removable SD Card (64 GB) ; Max. Storage Capacity: 128 GB	
Battery Operating Time	Approx. 6 hours x 2	Approx. 6 hours x 2	Approx. 6 hours x 2	Approx. 6 hours x 2	Approx. 4 hours x 2	Approx. 4 hours x 2

GX1 SERIES

Ultra High Resolution. More Efficient Inspection



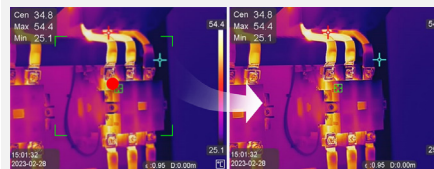
Ultra High Resolution

A highly sensitive VOx detector with up to 640 x 480 (307,200 pixels) IR resolution, provides a distinct thermal vision of the target.



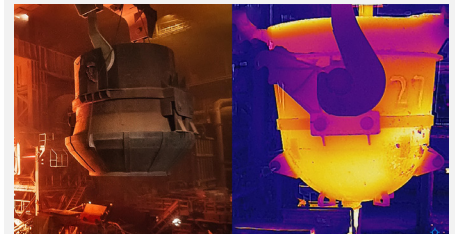
5 Quick Focus Modes

Support for 5 focus modes and a fast focus speed of 2 seconds help save time by providing sharper images for more accurate temperature measurements.



Up to 2000°C Temperature Range

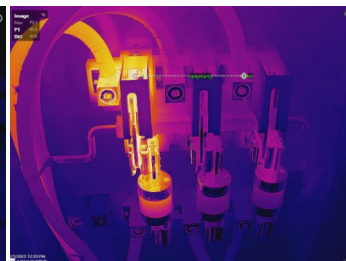
With a measurement range of up to 2000°C (3992°F), it can handle industrial furnace applications, refractory, and inspecting tools/fixtures in metal smelting at these extreme temperatures. (*G41H/G61H only)



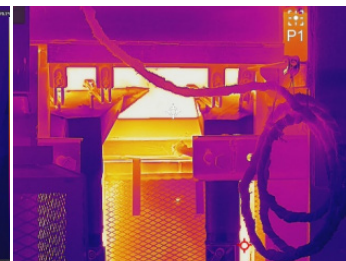
APPLICATIONS



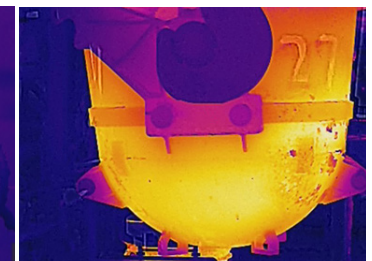
Electric Utilities



Facility Maintenance



Factory

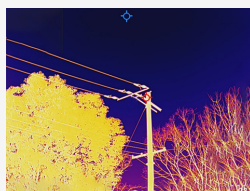


Kilns

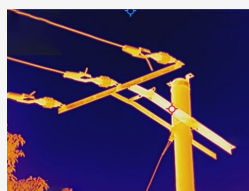
ADD-ON LENSES



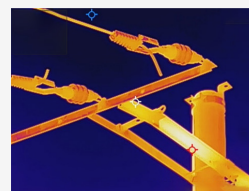
G31



Wide Angle 0.5X
HM-G305-LENS1



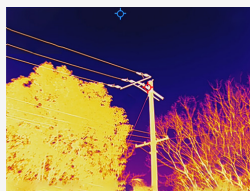
Telephoto 2X
HM-G320-LENS1



Telephoto 3.3X
HM-G330-LENS1



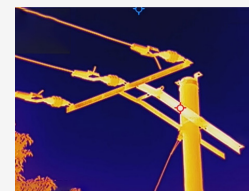
G41/H & G61/H



Wide Angle 0.5X
HM-G605-LENS1



Telephoto 2X
HM-G620-LENS1



Telephoto 3.3X
HM-G630-LENS1

WHAT'S IN THE BOX



- Handheld Thermography Camera
- 64GB Micro SD card
- Rechargeable Battery (x3)
- Charging Base
- Power Adapter
- International Use Plugs (US/EU/UK/AU) for Power Supply (x4)
- HDMI Cable
- 2-in-1 USB-C to USB-C/A Cable
(The data cable changed to a 2-in-1 cable for products manufactured after May 2024.)
- Lens Cover
- Hand Strap
- Accessory Bag
- User Manual
- Calibration Certificate
- Quick Start Guide
- Packing List
- Carrying Case
- Aperture (G41H/G61H Only)

Model No		G31	G41	G41H	G61	G61H
Infrared Image	IR Resolution	384 x 288	480 x 360	480 x 360	640 x 480	640 x 480
	SuperIR	768 x 576 (442,368 pixels)	960 x 720 (691,200 pixels)	960 x 720 (691,200 pixels)	1280 x 960 (1,228,800 pixels)	1280 x 960 (1,228,800 pixels)
	NETD	< 35 mK (@ 25 °C, F#=1.0)				
	Image Frequency	50 Hz				
	Field of View (FOV)	25° x 19°	18.7° x 14°	18.7° x 14°	25° x 19°	25° x 19°
	Spatial Resolution (IFOV)	1.13 mrad	0.68 mrad	0.68 mrad	0.68 mrad	0.68 mrad
	Focus Mode	Laser Assisted AF/Continuous AF/AF/Manual Focus/Touch AF				
Image Display	Visual Camera	3264 x 2448 (8 MP)				
Measurement and Analysis	Object Temperature Range	-20 °C to 650 °C (-4 °F to 1202 °F)	-20 °C to 650 °C (-4 °F to 1202 °F)	-20 °C to 2000 °C (-4 °F to 3632 °F)	-20 °C to 650 °C (-4 °F to 1202 °F)	-20 °C to 2000 °C (-4 °F to 3632 °F)
	Accuracy	Max (±2°C/3.6°F, ±2%)				
General	Image and Video Formats	JPEG, MP4, Radiometric Video				
	Wi-Fi	802.11 b/g/n (2.4 GHz and 5 GHz)				
	HDMI Interface	Yes				
	GPS & Compass	Yes				
	Battery Operating Time	3 batteries, 4hrs/battery runtime				

SP SERIES

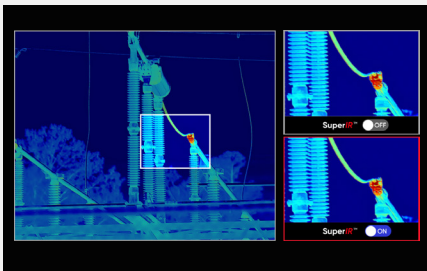
Ultra-high performance and maximum flexibility



SuperIR™

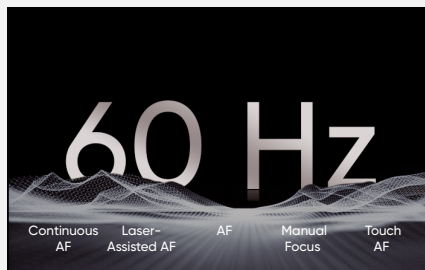
Powered by HIKMICRO SuperIR image enhancement technology, it upscales thermal images resolution when recording video with 30 Hz fast image frequency and capturing photos.

- SP40/H: from 480 × 360 up to 960 × 720
- SP60/H: from 640 × 480 up to 1280 × 960
- SP120H: from 1280 × 1024 up to 2560 × 2048



One-second fast focusing

Support for **5 focus modes** (Laser-Assisted AF, Continuous AF, AF, Manual Focus, Touch AF) with a fast focus speed of **1 second** to match your workflow, optimize image clarity, and ensure measurement accuracy.



Flexible Rotating Lens and Screen

The 90° rotating screen and the 180° rotating lens design help to easily view the area around, between, above, or below the target. Keeping a safe distance allows for equally flexible inspections.



Up to 2200°C
Temperature Range



1-Tap Level & Span



Extensive Range of
Interchangeable Lenses



Embedded
Laser Distance Meter

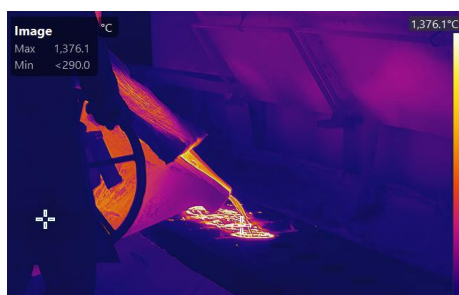


Radiometric Video Analysis

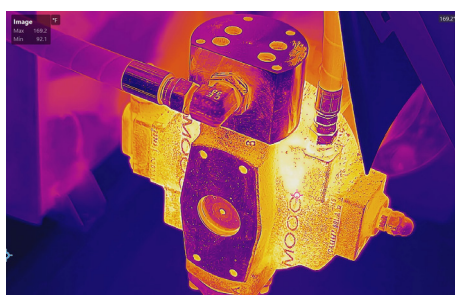


Interchangeable Battery
System

APPLICATIONS



High temperature



Industrial



Power Industry

WHAT'S IN THE BOX



- Thermal Imager
- Hand Strap
- Neck Strap
- Rubber Viewfinder Cap (SP60/60H/120H Only)
- Camera Lens Caps
- Dismountable and Rechargeable Li-ion Batteries (x2)
- Power Supply for Battery Charger
- Two-bay Battery Charger
- International Use Plugs (US/EU/UK/AU) for Power Supply
- USB 2.0 A to USB Type-C Cable
- Mini HDMI to HDMI Cable
- USB Type-C Cable to USB Type-C Cable
- Hard Carrying Case
- Calibration Certificate
- Quick Start Guide
- 128GB Micro SD card
- Dust-free Cloth

OPTIONAL ACCESSORIES



Model No		SP40	SP40H	SP60	SP60H	SP120H
Infrared Image	IR Resolution	480 x 360 (172,800 pixels)	480 x 360 (172,800 pixels)	640 x 480 (307,200 pixels)	640 x 480 (307,200 pixels)	1280 x 1024 (1,310,720 pixels)
	SuperIR	960 x 720 (691,200 pixels)	960 x 720 (691,200 pixels)	1280 x 960 (115,200 pixels)	1280 x 960 (115,200 pixels)	2560 x 2048 (5,242,880 pixels)
	NETD	< 30 mK (@ 30 °C, F#=1.0)				< 20mK (@ 30 °C, F#=1.0)
	Image Frequency	30 Hz				
	Field of View (FOV)	L6: 6° × 4.5°; L9: 9° × 6.8°; L19: 18.7° × 14°; L37: 37.3° × 27.8°			L8: 8° × 6°; L12: 12° × 9°; L25: 24.8° × 18.7°; L50: 50° × 37.3°	
	Spatial Resolution (IFOV)	L6: 0.22 mrad; L9: 0.33 mrad; L19: 0.68 mrad; L37: 1.35 mrad			L8: 0.22 mrad; L12: 0.33 mrad; L25: 0.68 mrad; L50: 1.35 mrad	
	Focus Speed	Approx. 1 second				
Image Display	Visual Camera	3264 × 2448 (8 MP)				4208 × 3120 (13 MP)
Display		1280 × 720 Resolution, 5" LCD Touch Screen				1920 × 1080 Resolution, 5.1" OLED Touch Screen
Measurement and Analysis	Object Temperature Range	-20 °C to 650 °C (-4 °F to 1202 °F)	-40°C to 2200°C (-4°F to 3992°F)	-20 °C to 650 °C (-4 °F to 1202 °F)	-40°C to 2200°C (-4°F to 3992°F)	-40°C to 2200°C (-40°F to 3992°F)
	Accuracy	±2°C/3.6°F	±1°C /±1.8°F	±2°C/3.6°F	±1°C /±1.8°F	± 2°C/3.6°F
General	Image and Video Formats	Radiometric JPEG, MP4 Video, Radiometric Video				
	Wi-Fi	802.11 b/g/n (2.4 GHz and 5 GHz)				
	HDMI Interface	Yes				
	GPS & Compass	Yes				
	Battery Operating Time	Approx. 4 hours				

FIREFIGHTING THERMAL CAMERAS

The professional firefighting thermal cameras are products designed for firefighting and life rescue. It supports multiple display modes for different on-site purposes, for example, firefighting, hidden fire point searching, life rescue, building analysis, etc. These modes can help fire and rescue personnel detect and understand the temperature status of the scene and detect life signs more efficiently.

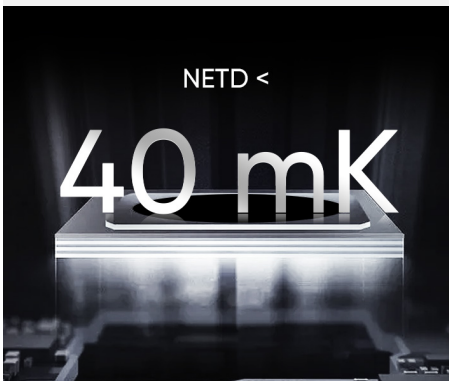
FB21

Compact And Reliable Thermal Camera For Observing In Total Darkness And Smoke.



High Image Quality

Features a highly sensitive (NETD < 40 mK) VOx detector and optimized image enhancement algorithms to provide clear thermal images.



3.2" Color LCD

View the details of your images on the large, class-leading LCD screen



Rugged & Durable Design

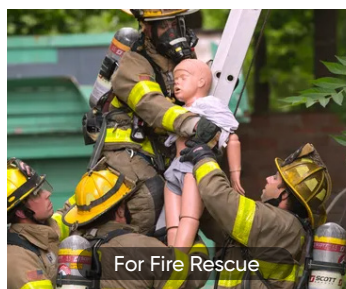
IP65 rated for protection against water and dust.
Featuring 2-meter (6.56ft) drop protection, suitable for harsh environment.



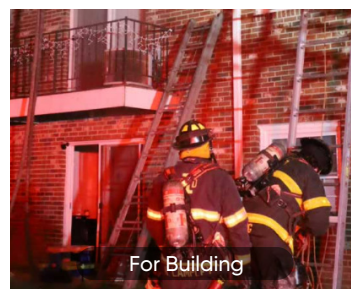
For Observing In Total Darkness And Smoke



For Smoke Systems



For Fire Rescue



For Building

Working Temperature Range:
Up to 10 minutes for ambient temperature **-10°C TO 90°C**
(14°F TO 194°F)

Up to 2 minutes for ambient temperature **-10°C to 115°C**
(14°F to 239°F)

8 Color Palettes Give Different Image Display Options



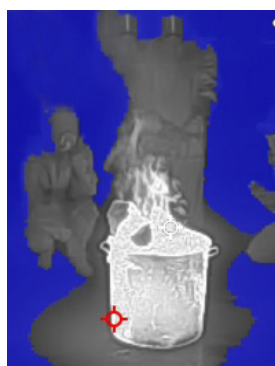
Fire Detection

For scenes with higher background temps where open flames are present, particularly in structural fires.



Rescue

For use with lower temperature situations, such as initial rescue efforts after traffic accidents, searches in wooded areas, etc.



Cold Area



Building



Hot Area



Basic

For initial fire attack and rescue operations; colors represent temperature.



Black & White

Same representations of temperature as the Basic mode, but in grayscale.

What's In The Box



- Thermal Camera with Wrist Strap
- Power Supply
- International Use Plugs (US/EU/UK/AU/CN) for Power Supply
- Calibration Certificate
- Quick Start Guide
- 2-in-1 USB-C to USB-C/A Cable (The data cable changed to a 2-in-1 cable for products manufactured after May 2024.)

Basic Parameters		FB21
Infrared Image	IR Resolution	256 × 192 (49,152 pixels)
	NETD	< 40 mK (@ 25 °C, F#=1.0)
	Image Frequency	25 Hz
	Field of View (FOV)	37.2° × 50.0°
	Min. Focusing Distance	0.3 m (0.98 ft)
	Focus Mode	Focus Free
Image Display	Visual Camera	1600 × 1200 (2 MP)
	Display	240 × 320 Resolution, 3.2"LCD Screen
	Color Palettes	Basic, Black Hot, White Hot, Fire Detection, Rescue, Hot Area, Cold Area, Building
Measurement and Analysis	Object Temperature Range	-20 °C to 550 °C (-4°F to 1022°F)
	Accuracy	Max. (± 2°C/3.6°F, ± 2%), for ambient temperature -20°C to 50°C (-4°F to 122°F) and object temperature above 0°C (32°F)
General	LED Light	Yes
	Battery Type	Rechargeable Li-ion battery
	Protection Level	IP65
	Drop Test Height	2 m (6.56 ft)
	Working Temperature Range	Up to 10 minutes for ambient temperature -10°C to 90°C (14°F to 194°F); up to 2 minutes for ambient temperature -10°C to 115°C (14°F to 239°F)
	Weight	Approx. 380 g (0.84 lb)

FT31

High-performance Thermal Camera For Observing In Total Darkness And Smoke.



High-Performance Thermal Camera

High Image Quality

Features a highly sensitive (NETD < 35 mK) VOx detector, along with ODE(Object Details Enhancement) to provide clear thermal images.



60 Hz Fast Image Frequency

60 Hz fast image frequency delivers smooth video while panning across scenes or viewing moving targets.



Rugged & Durable Design

IP67 rated for protection against water and dust. Featuring 2-meter (6.56ft) drop protection, suitable for harsh environment.



For Observing In Total Darkness And Smoke



For Firefighting/ Smoke Systems



For Fire Rescue



For Building Construction

Working Temperature Range:

-20°C to 50°C (-4°F to 122°F);
80°C (176°F), 40min;
150°C (302°F), 15min;
260°C (500°F), 7min.

8 Color Palettes Give Different Image Display Options



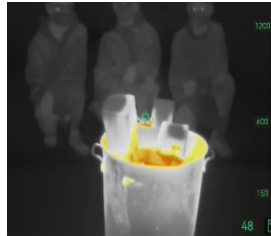
Fire Detection

For scenes with higher background temps where open flames are present, particularly in structural fires.



Rescue

For use with lower temperature situations, such as initial rescue efforts after traffic accidents, searches in wooded areas, etc.



Basic

For initial fire attack and rescue operations; colors represent temperature.



Black & White

Same representations of temperature as the Basic mode, but in grayscale.



Hot Area

Used for finding hotspots. The hottest 20% of the scene is colored red.



Cold Area



Building

What's In The Box



- Thermal Imager
- Neck Strap
- Lanyard
- Retractable Lanyard
- Interchangeable and Rechargeable Li-ion Batteries
- Power Supply for Battery Charger

- Two-bay Battery Charger
- International Use Plugs (US/EU/UK/AU) for Power Supply
- Hard Carrying Case
- Calibration Certificate
- Quick Start Guide
- 2-in-1 USB-C to USB-C/A Cable
(The data cable changed to a 2-in-1 cable for products manufactured after May 2024.)

Basic Parameters		FT31
Infrared Image	IR Resolution	384 x 288 (110,592 pixels)
	NETD	< 35 mK (@ 25°C, F#=1.0)
	Image Frequency	60 Hz
	Field of View (FOV)	54.1°×40.2°
	Min. Focusing Distance	1 m (3.28 ft)
	Focus Mode	Focus Free
Image Display	Display	800 × 480 Resolution, 4.3" LCD Screen
	Color Palettes	Basic, Black Hot, White Hot, Fire Detection, Rescue, Hot Area, Cold Area, Building
Measurement and Analysis	Object Temperature Range	-20°C to 1200°C (-4°F to 2192°F)
	Accuracy	Max. (± 2°C/3.6°F, ± 2%), for ambient temperature 15°C to 35°C (59°F to 95°F) and object temperature above 0°C (32°F)
General	Battery Type	Interchangeable and rechargeable Li-ion battery
	Protection Level	IP67
	Drop Test Height	2 m (6.56 ft)
	Working Temperature Range	-20°C to 50°C (-4°F to 122°F) 80°C(176°F) , 40min 150°C(302°F), 15min 260°C(500°F), 7min
	Weight	Approx. 1022g (2.25 lb)

INTRINSICALLY SAFE THERMAL CAMERA

Potentially explosive environments, such as oil and gas plants or chemical plants, require preventing potential ignition from entering the atmosphere. Electronic equipment can be a source of ignition, which is why we must use explosion-proof products in hazardous areas. HIKMICRO is a certified (comply with ATEX and IECEx) manufacturer of explosion-proof thermal cameras, which enables users to work with confidence and safety with our thermal cameras.

BX20 ATEX & IECEx Certified

Compact Intrinsically Safe Thermal Camera for Hazardous Areas



Certified Product and Manufacturer

Not only the HIKMICRO BX20 intrinsically safe thermal camera has obtained ATEX and IECEx certification. In addition, HIKMICRO is an audited manufacturer of hazardous location equipment and gets ATEX Quality Assurance Notification (QAN) and IECEx Quality Assurance Report (QAR).



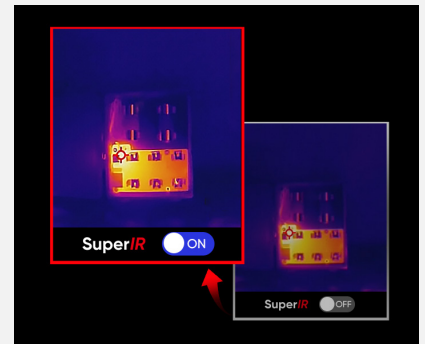
High Image Quality

Features a high Resolution (256 × 192, 49,152 pixels) and highly sensitive (NETD < 40 mK) VOx IR detector, along with HIKMICRO SuperIR image enhancement algorithms to provide super clear thermal images.



Enhanced Thermal Clarity with SuperIR

Powered by HIKMICRO SuperIR image enhancement technology, it upscales the resolution of captured thermal images to 320 x 240 (76,800 Pixels).



25 Hz Fast Image Frequency

25 Hz fast image frequency delivers smooth video while panning across scenes or viewing moving targets.



Full-screen Precise and Wide Measurement

Supports capture of full-screen radiometric images and automatically tracks max/min/center spots to pinpoint temperature anomalies at a glance. Accurately measures temperatures from -20°C to 550°C with a temperature accuracy up to +/-2°C or +/-2% of reading.

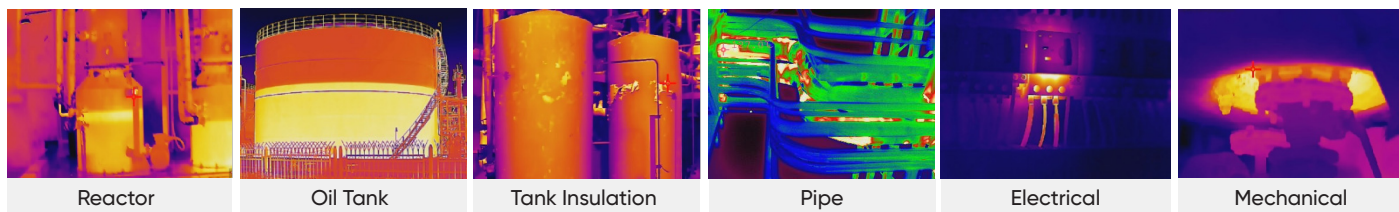


Durable and Rechargeable Batteries

Built-in 3350mAh Li-Ion rechargeable battery and thoughtful auto power-off settings (10/20/30/40/50/60 minutes) allow the camera up to 6 hours of continuous operation.

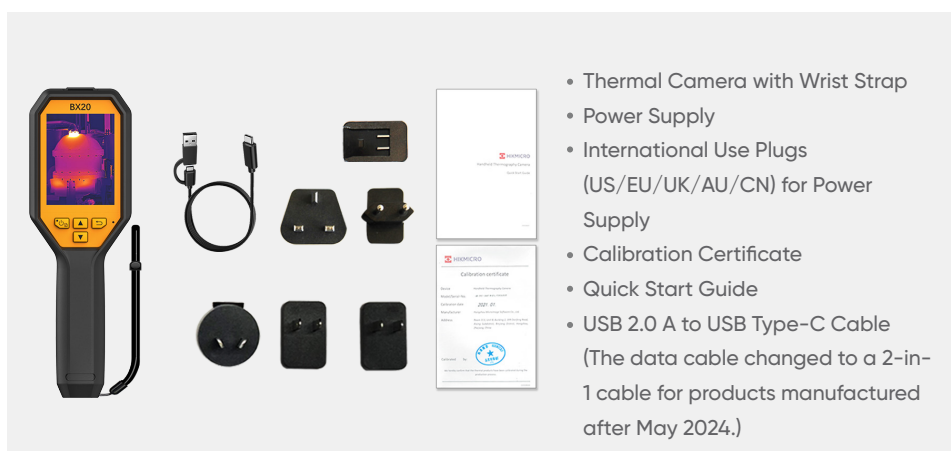
APPLICATIONS

It is suitable for Zone 2 scenarios in petrochemical plants, refineries, substations, offshore platforms, production plants, pharmaceuticals, hazardous waste management and other industries.

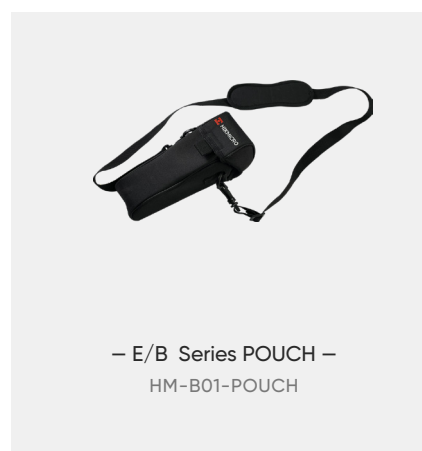


*Note: The pictures taken by device are for reference only, the actual effect shall prevail.

WHAT'S IN THE BOX



OPTIONAL ACCESSORIES



Camera Highlights		BX20
Certificate Information	ATEX / IECEx Certificate Type	ATEX: II 3 G Ex ic IIC T6 Gc, II 3 D Ex ic IIIC T85°C Dc IECEx: Ex ic IIC T6 Gc, Ex ic IIIC T85°C Dc
Infrared Image	IR Resolution	256 × 192 (49,152 pixels)
	SuperIR	Yes, on Captured Thermal Images
	NETD	< 40 mK (@ 25 °C, F#=1.0)
	Image Frequency	25 Hz
	Field of View (FOV)	37.2° × 50.0°
	Focus Mode	Focus Free
Image Display	Visual Camera	1600 × 1200 (2 MP)
	Image Modes	Thermal/Visual/PIP/Fusion
	Display	240 × 320 Resolution, 3.2"LCD Screen
Measurement and Analysis	Object Temperature Range	-20 °C to 550 °C (-4°F to 1022°F)
	Accuracy	Max (±2°C/3.6°F, ±2%), for the ambient temp. 15°C to 35 °C (59 °F to 95 °F) and object temp. above 0 °C (32°F)
Data Storage and Communication	Storage Media	Built-in 16 GB flash memory
	File Format	Radiometric JPEG
	Storage Capacity	Approx. 90,000 Images
General	Battery Operating Time	Approx. 6 hours
	Led Flashlight	✓
	Durability	IP64, 2 m (6.56 ft) drop protection
	Weight	Approx. 380 g (0.84 lb)

ACOUSTIC SERIES

Sound is everywhere, but not all of it can be heard by the human ear. Acoustic products can help you to find all kinds of potential problems. It quickly finds problems by collecting sound and filtering noise through digital images, you can quickly find the source of the problems. Whether it's a leak indoors or in factories, substations, or the oil and gas industry. Acoustic products offer a more efficient, safe way to get your job done smoothly. Adopting Acoustic products can discover potential safety risks, minimize troubleshooting, and save extra equipment failures and downtime costs.



AI SERIES

For Finding Compressed Gas Leaks And Detecting Partial Discharge



Low-noise MEMS Microphones and Adjustable Bandwidth

With Low-noise MEMS microphones and an adjustable bandwidth range from 2 kHz to 96 kHz. The HIKMICRO AI series provides an easy and effective way to instantly locate gas leak detection and partial discharge from high-voltage systems.



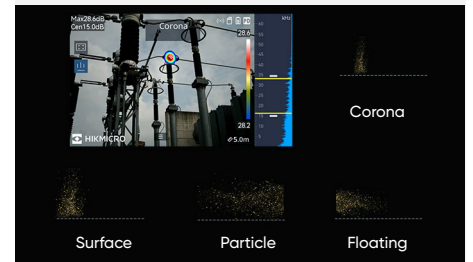
Real-time Display of Leakage Data

The HIKMICRO AI series offers real-time estimated leak rate, leak cost for gas leak detection. AI series can filter noise to "visualize" sound with a large 4.3" LCD touch screen even in noisy environments.



Smart Partial Discharge Detection

When placed in Partial Discharge mode, the AI series identifies corona, floating, surface, or particle discharge on high voltage systems that can lead to equipment failure. This is instantly displayed onscreen and can be saved for documentation and reporting.



Analyzer Acoustic

Analyzer Acoustic software allows you to analyze and create reports based on field inspection images.



Rugged and Portable

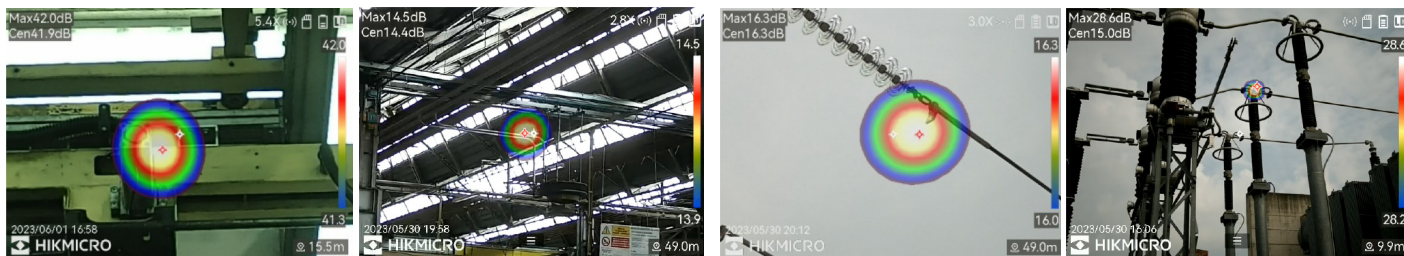
Convenient one-handed operation makes the AI56 easy to manage and find/document issues fast.



Fully Document your Findings

Capture 5MP visual images with sound or partial discharge overlay. Add text or voice comments to complete your reporting quickly.

APPLICATIONS



Gas Leak Detection

Partial Discharge Detection

WHAT'S IN THE BOX



- Acoustic Imaging Camera (x1)
- Battery (x3)
- Charging Base (x1)
- Calibration Certificate (x1)
- Power Adapter (x1)
- Adapter (x4)
- Hand Strap (x1)
- HDMI Cable (x1)
- SD Card (x1)
- 2-in-1 USB-C to USB-C/A Cable (x1)
(The data cable changed to a 2-in-1 cable for products manufactured after May 2024.)
- MIC Protective Case (x1)
- Accessories Bag (x1)
- Quick Start Guide (x1)
- Carrying Case (x1)

Model No		AI56	AI76
Acoustic	Number of Microphones	64	136
	Bandwidth	0 kHz to 96 kHz, adjustable range MEMS sampling frequency: 192 kHz	
	Distance	0.3m~150m (0.98 ft~492 ft)	
	Sound Intensity Display	Peak Point	
	Acoustic Image Frame Rate	25 fps	
	Leak Rate	>0.008 l/min @ 6 bar from 0.5m (1.64 ft) >0.013 l/min @ 5 bar from 1 m (3.28 ft)	>0.0047 l/min @ 6 bar from 0.5 m (1.64 ft) >0.0073 l/min @ 5 bar from 1 m (3.28 ft)
	Dynamic Range	Low Limit: <-15dB High Limit: >120dB	
	Discharge Detection	Automatic detection 50 / 60 Hz	
	Discharge Type	Corona Discharge, Particle Discharge, Floating Discharge, Surface Discharge	
Image Display	Camera FOV	50.2°× 35.4°	
	Display	800 × 480 Resolution, 4.3" LCD Touch Screen	
	Digital Zoom	1.0x to 8.0x continuous	
General	Annotations	Voice note: max. 60 seconds;Text note: max. 255 characters	
	Battery Operating Time	3 batteries, 3.5hrs/battery runtime	3 batteries, 2hrs/battery runtime
	Protection level	IP54	
	Working Temperature Range	-20 °C to 50 °C (-4 °F to 122 °F)	
	Weight	Approx. 940 g (2.07 lb)	Approx. 1200 g (2.64 lb)

AD21

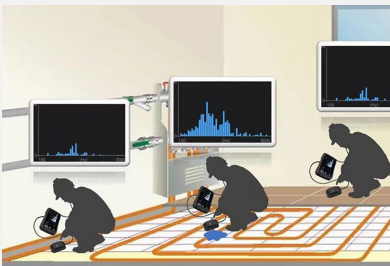
Professional Tools For Detecting Indoor Leaks



Two Inspection Modes For Fast Leak Location

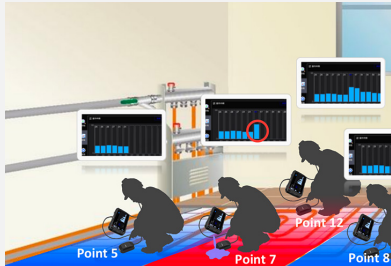
Quick Inspection Mode

Quickly locate the scope of the leakage point, through real-time digital and image changes for investigation.
With three display modes: figure, bar chart and line chart, suitable for different users' habits.



Inspection Mode

Inspection mode can detect the floor and wall. Record the values of up to 12 areas. After finishing the inspection, AD21 will automatically determine the suspected leakage points, making the leakage detection work more accurate.



Four Indoor Band Pass Filters

Through intelligent algorithms, AD21 is optimized for different sound bands in indoor leak detection scenarios, picking the right gear to quickly locate the location of the leak.

Indoor Low-frequency	150 to 3000Hz
Indoor Mid-frequency	3000 to 6000Hz
Indoor High-frequency	4500 to 7500Hz
Indoor All-pass	150 to 7500Hz



Easy To Use, More Flexible Setting

7"LCD Touch Screen Display &
Dual Wave Wheels



High Quality Listening Experience

High-quality Noise-canceling Headset &
Hearing Protection



Durable And Rechargeable Batteries

Rugged & Durable Design with 11 Hrs.
Continuous Runtime

APPLICATIONS



Leak Under The Floor



Heating Pipes/
Underfloor Heating
Pipe Leaks



Water Supply
Pipe Leakage/
Water Pipe Leakage



Roofs And Walls,
Water Seepage In
The Ground



Fire Sprinkler
System

WHAT'S IN THE BOX



- Main Unit
- Handheld Sensor
- Pick-up Sensor
- Handle grip
- Headset
- Power Supply for Battery Charger
- International Use Plugs (US/EU/UK/AU) for Power Supply (x4)
- Pouch
- Quick Start Guide
- Calibration Certificate
- 2-in-1 USB-C to USB-C/A Cable
(The data cable changed to a 2-in-1 cable for products manufactured after May 2024.)

Model No		AD21
Acoustic	Frequency Range	150~7500Hz
	Signal Noise Ratio	60dB
	Sensitivity	-29dB,70mv/g
	Sensor	hand held sensor, Pick-up sensor
	Band Pass Filters	Indoor low-frequency 150Hz to 3000Hz Indoor high-frequency 4500Hz to 7500Hz Indoor mid-frequency 3000Hz to 6000Hz Indoor all-pass 150Hz to 7500Hz
Image Display	Display	1024 × 600 Resolution, 7"LCD Touch Screen
	Screen Brightness	Manual/Auto
General	Storage Media	Built-in EMMC(4GB)
	Audio Storage Capacity	Approx. 20 hours
	Working Temperature Range	-10 °C to 50 °C (14 °F to 122 °F)
	Drop Test Height	1.2 m(3.93 ft.)
	Battery Type	Rechargeable Li-ion Battery
	Battery Operating Time	≥11h
	Battery Charging Time	3h to 90%,6h to full charge
	Protection Level	Main Unit:IP40; Hand held sensor:IP54; Pick-up sensor:IP66;

MOBILE APPLICATIONS AND PC SOFTWARE

Gathering images through field inspections is the first step in delivering high-value, actionable findings to your customers. While at the site, HIKMICRO Viewer for mobile devices lets you immediately edit, call out, and send urgent findings to interested parties for quick decisions. When back at the office, HIKMICRO Analyzer for the PC is a fully featured analysis and reporting tool to manage radiometric images and video files. Create reports and add your company logo to one of the pre-made templates or edit and save your own templates. For large jobs with multiple inspection points requiring repeat inspections, we created HIMICRO Inspector that's compatible with our G and SP series cameras.

The HIKMICRO suite of software solutions provides you with the most professional portfolio of camera software designed to increase productivity and deliver results to your customers. Best of all, it's available at no extra charge or recurring fees.

HIKMICRO VIEWER

WIRELESS ANALYSIS, REPORTING AND SHARING



HIKMICRO Viewer App is A powerful and intuitive APP designed for industrial thermal cameras. It allows thermal inspector to view and capture live streaming infrared video and still images from select HIKMICRO thermal imaging cameras using a mobile device. With the HIKMICRO Viewer, the thermal camera can be placed in an area and operated wirelessly from a distance - helping infrared detection work safely in hard-to-reach locations and harsh work environments. Streaming video and remote access also provide opportunities for decision-makers and others on the team to observe and collaborate during IR surveys. With a powerful reports function, you can efficiently generate reports for your clients in the field.

- ♦ Free license
- ♦ Scan and Connect Easily
- ♦ Download On-Device Images and Video to share
- ♦ Live View and Remote Control
- ♦ Advanced measurement and image analysis
- ♦ Quick reporting and sharing
- ♦ Firmware Upgrade
- ♦ After-sales contacts and online support services
- ♦ Turn screen rotation on and off



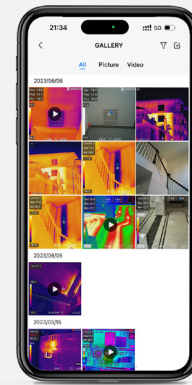
Live View and Remote Control



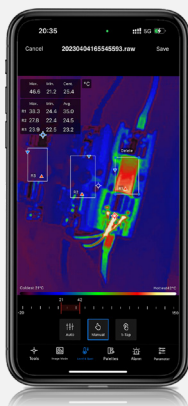
Scan and Connect Easily



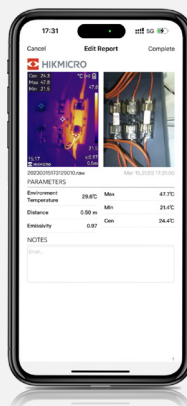
Download On-Device Images and Sharing



Radiometric Image Analysis



Generate Report in the Field



Firmware Upgrade



HIKMICRO ANALYZER

EFFICIENT, POWERFUL THERMAL ANALYSIS AND REPORTING



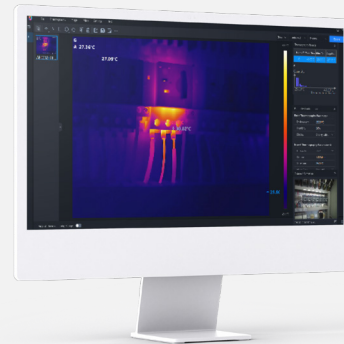
HIKMICRO Analyzer is a powerful and free licensed PC software designed to help users manage and analyze thousands of thermal images and videos and quickly create professional reports. Compatible with files from HIKMICRO handheld thermal cameras, providing the features you need to simplify your workflow and increase your productivity.

- ♦ Free license
- ♦ Import, edit and manage files
- ♦ View, edit and analysis radiometric images and videos
- ♦ Advanced measurement and image analysis
- ♦ Batch processing with all image and measurement controls
- ♦ Quick reporting with pre-defined or customized templates

Capture Field Images

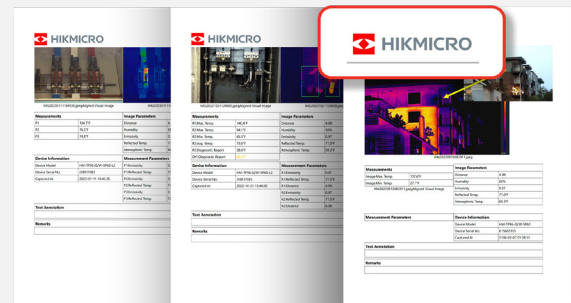


Powerful Analysis Tools



Generate Multi-page Reports

* Customize report templates with your company logo





CONTACT US

Please feel free to get in touch with us.

We'd love to hear your thoughts and answer any questions you may have!

Headquarters

Marketing Cooperation

Global-marketing@hikmicrotech.com

Technical Support

support@hikmicrotech.com

General Enquiries

info@hikmicrotech.com

Facebook

HIKMICRO Thermography

Instagram

hikmicro_thermography

YouTube

HIKMICRO Thermography

LinkedIn

HIKMICRO

Europe(ex. UK & Ireland)

Germany

e-mail: techsupport.cee@hikmicrotech.com
+49 61027009601

France

Tel.: +33 180240079

Italy

Tel.: +39 04381785901

Norway

Tel.: +47 21492083

Spain

Tel.: +34 919031282

Netherlands

Tel.: +31 202255858

Belgium

Tel.: +32 28086833

Czech

Tel.: +420 234076118

Denmark

Tel.: +45 78770168

Romania

Tel.: +40 316303689

Slovakia

Tel.: +421 233456332

Finland

Tel.: +358 942457424

Portugal

Tel.: +351 308801252

Hungary

Tel.: +36 18508373

Poland

Tel.: +48 221047595

Sweden

Tel.: +46 840839036

US & Canada

Technical Support

e-mail:
techsupport.na@hikmicrotech.com

RMA

e-mail:
rma.na@hikmicrotech.com

Sales

e-mail:
infoNAM@hikmicrotech.com

UK & Ireland

United Kingdom

Tel.: +44 2035140092

AUS & NZ

Australia

Tel.: +61 383759203

New Zealand

Tel.: +64 42807421

Japan

Technical Support

e-mail: info_jp.hm@hikmicrotech.com