



President's Letter

by MGV Mary Wolverton

Many of us got into the master gardener program because we love to talk about plants. Fortunately master gardener projects have included events that let us do just that – the State Fair and the Home Show. If those are events you enjoy you need to know that we have other opportunities to get hours by just talking to people.

Our Speaker's Bureau and Lifelong Gardening project are as busy as ever. Susan Taylor chairs Speakers' Bureau and can always use speakers, program writers and admin help. Ann Loper chairs Lifelong Gardening and welcomes new committee members interested in demonstrating how we can continue to garden as we age.

We also have requests for volunteers to appear at various public events. This summer we have tables at two Dockhounds minor league baseball games in Oconomowoc in May, the Waukesha Country Fair and the Greendale Garden Walk in July and Nature Forestry Fest in Greenfield in August. The Boerner Garden Cart is a continuing event anytime the garden is open. We have the Brookfield Farmer's Market on Saturday but would like to get into more markets throughout the week. None of these events require special expertise. A smile and a willingness to hunt up the right brochure or website is all that is needed.

The master gardener program was started to extend the University's education mission into the community. Education is our mission. We would like to do even more than we are doing. We get requests we can't fill. At this point these community education requests are being fielded by me as we don't have a dedicated committee or chair. Similarly the displays we use at these events are getting a bit worn and dated (no more gypsy moths – we need to rename that display).

If you are looking for hours evenings and weekends, essentially whenever you have time to go online for research or emails, we are looking for you. We need people to work on community education. One person, two people, a team – please let me know if you would like to help keep our members in front of the public.

Save the Date

Annual Picnic
Thursday, August 17 | 5:00PM
Sharon Lynne Wilson Center for the Arts

Member Meeting
Saturday, August 26 | 9:30AM
Boerner Botanical Gardens



From the Board

by MGV Valorie Sangsland, Board Chair



Greetings SEMWG volunteers! While I'm writing this in June and the gardening season is just beginning, you will be reading it in the heat of August, just as the Wisconsin State Fair lures visitors from all over Wisconsin to view our State's best Agricultural and Horticultural offerings. Those offerings will once again include SEWMG's garden in Exploratory Park. It's exciting to note that the State Fair now lists the Master Gardener area and our Cactus and Succulent Garden as two notable features of Exploratory Park. Check out <https://wistatefair.com/fair/exploratory-park/> to read more. I hope we continue to enjoy the enthusiastic turnout that has marked our previous State Fair events!

SEWMG has begun to participate in some additional Community Events as well: two Dockhounds events in Oconomowoc in May, a Garden Walk in Greendale and the Waukesha County Fair in July, and more. It's also been very gratifying to see new ORS

partners being loaded and enthusiastically embraced by our members. Educating and helping others is what we do best, and I'm very proud to see our members engaging freely with our communities!

Knowing that not every person is comfortable with face-to-face public interaction, and not every schedule allows for weekday gardening work, I would be remiss if I didn't remind members there are still many volunteer opportunities available that can be done on evenings and weekends that support our mission. Please contact me if you're interested in investigating how else you might volunteer for SEWMG.

With that said, I hear some weeding and deadheading calling to me from my perennial beds, so I will wish you all great gardening, and I hope to see all of you at the SEWMG picnic or other summer events!

State Fair 2023

by MGV Mary Wolverton

The State Fair gardening team is hard at work pulling together a gorgeous garden for this year's Fair from August 3 to August 13.

The theme this year is trees. We have cleared more box elder and buckthorn and the Fair staff removed two dying spruce. In the new open space along the south fence we have added two trees thanks to the generosity of Johnson's Nursery in Menomonee Falls. We will introduce our visitors to a new musclewood and a new ironwood. Both will be labeled. We are also labeling the granddaddy cottonwood with some statistics.

The south end of the garden will also have new shrubs and plants suitable to a forest understory.

The trees will be joined by a large A-frame poster on the benefits of planting a tree. We also have a handout on 10 trees to plant in Wisconsin. The usual handouts on how to plant a tree and tree pests will also be available.

The tree theme carries over into a renewed gnome garden. The garden now has a very tiny tree. You will see the gnomes hard at work in their new garden.

The pollinator bed planted along the fence in the natives garden last year came back gangbusters. It is a good illustration of the color that a native garden can provide.

The sun to shade border, center bed and cactus and succulent beds continue to mature. The container contest returns so you will have the opportunity to engage the public by asking them to vote in our competition.

Plan to volunteer during the Fair. Watch for the sign-up emails.



A Strategic Planning Update

by MGV Erin Napier

In 2021-2022 the Board Approved large portions of SEWMG's Strategic Plan that included Vision, Mission, Values, and Diversity Statement (found on SEWMG.org) as well as Membership, Communication, Community Partnership & Enablement Strategies. You have already started to experience parts of the strategy's implementation via Neighborhood Gatherings organized by the Membership Committee earlier this year, as well as the recent (open to the public program) "Grow Great Vegetables with Bevin Cohen" hosted by the Education Committee.

The Strategic Planning Committee is developing two remaining portions of the Strategic Plan in 2023, that were not completed in 2022:

- **Operational Effectiveness** (Mary Wolverton with Valorie Sangsland).
Financial Management & Sustainability; Risk Management; Technology; Leadership Succession (Leadership Committee drafting); Bylaws Process
- **Diversity, Equity, Accessibility, and Inclusivity (DEAI)** (Erin Napier, Eileen Quinlan, Katharine O'Connell-Valuch, Jane Belanger, Mary Koshollek).

A key part of our SEWMG values is inclusion as SEWMG aims to "provide a welcoming environment for new and experienced gardeners and embrace all voices." Our Diversity Statement challenges us to become an actively inclusive organization "through the diversity of backgrounds, perspectives, and experiences ... creating welcoming experiences for both our members and communities."

There are no universal definitions for diversity, equity, accessibility, and inclusion and while I have some in mind, they are too lengthy for this article. I invite members that want to know more to explore this worthwhile topic on their own. There is a great article from the University of San Francisco, "DEAI In Nonprofits: Through the Lens of Museums and Gardens" (5-21-2021) that we've referenced in our Committee

and for this article (found on <https://repository.usfca.edu/capstone/1182/>).

The Board, the Strategic Planning Committee, and our members, recognize that nonprofits such as SEWMG play a vital role in communities and must keep a pulse on the communities that surround us to stay relevant and provide resources through programs - or simply open the doors to new people. There is an imperative need for change identified through SEWMG's 2022 Member Survey, and SEWMG like many other nonprofit organizations must evolve, develop, and adopt important cultural changes.

While the Strategic Planning Committee explores methods to integrate DEAI plans into the larger SEWMG strategy, we understand that a culture shift within our organization is an opportunity. Incorporating DEAI into our plans allows for an accountability tool as the organization continues to learn, test, and apply DEAI concepts within our organization. If you are interested in this topic and would like to know more and/or participate in DEAI strategy development, please contact me at erinn521aux@gmail.com. The Strategic Planning Committee will be conducting another two months of work before presenting the DEAI draft to the Board at the end of August 2023.

Staying Relevant

***SEWMG plays a vital role in communities and must keep a pulse on the communities that surround us to stay relevant and provide resources through programs - or simply open the doors to new people.
Help develop a strategy-about diversity, equity, accessibility and inclusion. Contact erinn521aux@gmail.com.***

Share Your Project Photos

by MGV Margaret Krueger, Social Media

One way SEWMG shares information with the general public is through our Facebook and Instagram accounts. We have expanded our outreach through partnerships with non-profit groups. Let's show SEWMG's commitment to communities.

Margaret Krueger, Social Media chair, says she "would love to promote your efforts and show off the beautiful gardens on Facebook and Instagram." Help her by sending "photos as well as a little bit about the garden...think short and sweet!"

Simplify this by adding her name, phone number and e-mail to your contacts so you have it handy for any photo ops that happen to pop up throughout the growing season.

Margaret Krueger
414-331-3985
margaret.l.krueger@gmail.com



Meet MGV Dawn Scherr, Special Events Co-chair

by MGV Janet Wintersberger

You may be familiar with her name through e-mails about our two special events, State Fair and Realtors' Home and Garden Show. Now it's time for a more formal introduction!

Dawn took the MGV class in the Fall of 2013. Prior to accepting the scheduler role, she volunteered at Retzer Nature Center, Ten Chimneys and the Plant Sale and other miscellaneous behind-the-scenes administrative projects. She became involved in her current role in May 2022.

Dawn has had "extensive experience working with spreadsheets and mail merges through my many years of work as a Trust Assistant where one of my duties was coordinating very large charitable contribution mailings for several large Foundations and doing mass mailings as a Marketing Assistant for The Grand Avenue back in the mid-1980's."

Before streamlining SEWMGs sign-up process, staffing was done on paper and/or by telephone. Filling the 176 time slots at the fair seems daunting to me. Comparatively less daunting were the 70 shifts at the Realtors' Home and Garden Show in March.

With Dawn at the helm, "Now, the initial sign-up email is sent out and people start registering to volunteer, I download the information they provide into a spreadsheet and use that to type their choices into a separate schedule spreadsheet, which is what everyone receives in their info packet mailings in July and the email updates I send prior to that. I also use the downloaded spreadsheet to create mailing labels via mail merge in MS Word, and to create the Contacts Lists we provide to everyone in that same July mailing. So it is critical that the info people type in is correct."

Dawn says she "volunteered to take on these scheduling tasks because I like this aspect of organizing and find it rewarding because we try very hard to make it as easy for the MGV's to volunteer as we can. I do get some personal email contact with the volunteers and it's great to meet them in person at orientations or during a shared shift."

Her four-acre yard keeps her very physically busy between battling invasives, tending to existing plants or adding new ones, so "volunteering as a scheduler is a way for me to serve in our association without putting more wear and tear on my body!"

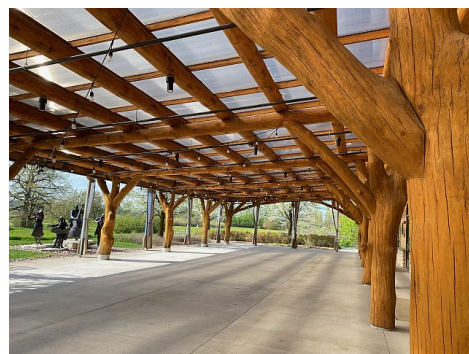
New Picnic Location

by MGV Karla Geiger, Picnic Committee

Our Picnic Committee is very excited to share the New Venue for our Annual Membership Picnic, Sharon Lynne Wilson Center for the Arts! We toured this lovely venue [that we volunteer at and beautify] and were quite impressed! Shaded and extensive outdoor space, that will be suitable for any weather, and air conditioned inside space for our silent auction. Onsite art installation available to view when you are not bidding on raffles, and gardens that we tend to meander during the cocktail hour!!

Informational poster is on the next page, sharing all pertinent details. We are working to add PayPal payments, and ask that you please plan to bring your checkbooks, if the wifi would be slow or the line is long to purchase our amazing raffle items!!

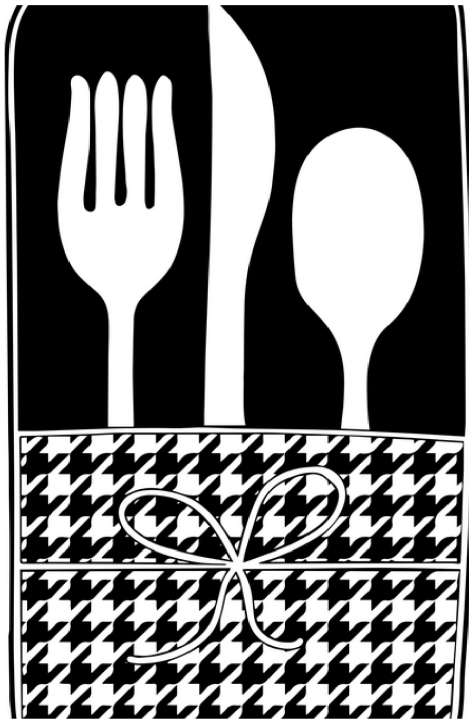
Save the date, Thursday, 8/17/23. We look forward to celebrating together.



SEWMG

Annual Picnic

Thursday, 8/17/23



Tour Jeff Trader's Garden: 2pm-5pm

Rain or Shine/Indoor & Outdoor Spaces

Appetizers & Beverages: 5pm-6pm

Buffet Pasta Bar Dinner: 6pm

Raffle Prizes & Silent Auction Items:

Bring Checkbook or Cash!!

Tour Jeff Trader's Garden, 2pm-5pm

2490 Shelly Court

Brookfield, WI [2.5 miles from venue]

Drop Ins Welcome

[NEW VENUE!]

Picnic held at Sharon Lynne Wilson Center for the Arts, 5pm-7pm

3270 Mitchell Park Drive

Brookfield, WI 53045

Please bring: Dish to pass
Appetizer, Salad or Dessert
[Please Label your Container & Lid with your Name]

Gently used gardening magazines or books,
Houseplants/cuttings to exchange.

Checkbook, cash or PAYPAL
for AMAZING Silent Auction.

Benefits to Attending Picnic

Meet new MGV members! Make new friends!!

Share gently used gardening magazines, gardening books, and/or Houseplants.

Relax from a night of gardening and enjoy this appreciation event of socializing.

Our Picnic Committee is looking forward to celebrating SEWMG members.

Meet MGV Jean Akhter

by MGV Jean Akhter (In her own words)

Eleven years ago, I added a new dimension to my world by joining SEWMG. I had been enjoying backyard gardening and wanted to step-up my garden game. Since that day, I've never looked back. SEWMG offers the opportunities I was looking for—continuing education to improve my knowledge and skills, a list serve that keeps me connected to members and staff so we can support and inform each other, and volunteer outlets for me to teach and assist local organizations so the love of gardening can grow within our community.

Over the past decade, I have worked with many wonderful organizations. Last year I volunteered for the three organizations highlighted in my article along with others like REFLO and the historic Forest Home Cemetery. Other favorites include working

with children, on behalf of SEWMG, with Sixteenth Street Community Health Centers, Milwaukee County Fair, and the Youth Gardening Program. I've made presentations to organizations like local libraries, Realtors' Home and Garden Show, and the Milwaukee Muslim Women's Coalition. These are but a few of the volunteer experiences I've had with SEWMG. I appreciate the changes that have taken place at the State level that give volunteers the freedom to engage with a wider variety of organizations than ever before. With eleven years under my belt, I look ahead to my next decade with SEWMG.



Have Fun - Volunteer

by MGV Jean Akhter

One of the most rewarding aspects of being an MGV is sharing the experience of gardening with others and meeting interesting people along the way. The volunteer component in the Master Gardener program is well worth the effort one puts into it. Three of the numerous organizations that offer meaningful volunteer opportunities for MGVs are as follows:

Greendale School Garden, in the Village of Greendale, hosts many summer events.

- Consider harvesting for or selling produce at the Garden's stall at the Open Market in Downtown Greendale. **Dates include: 7/08, 7/22, 8/12, 8/26, 9/09, 9/23**
 - **7/11/2023:** Educational Session for Greendale Senior Social Club at St. Luke's Church to promote healthful eating (in collaboration with the Greendale Health Department)
 - **7/17-21/2023:** Annual Community Garden Camp for youth (at the School Garden)
 - **Early August:** Annual Healthy Eating Event in the School Garden (in collaboration with the Greendale Health Department)
- And so much more!

To volunteer for Greendale School Garden, email: karla.geiger@greendaleschools.org

Boerner Botanical Gardens, in the Village of Hales Corners, offers MGVs the opportunity to work alongside professional horticulturalists as they plant and maintain this garden treasure. At Boerner you can complete your hours in a beautiful space under the guidance of experts.

Friends of Boerner Botanical Gardens (FBBG), offers volunteers the opportunity to work with FBBG staff in teaching school groups and guiding small groups of students on garden walks. If you enjoy working with children and guiding them on garden tours, this is the perfect volunteer opportunity for you.

To volunteer for Boerner Botanical Gardens or FBBG

- Go to: boernerbotanicalgardens.org and follow the links for VOLUNTEERING.
- This will take you to a page where you can download the applications and learn more about submitting your application.
- With questions about volunteering for the Garden, call Amber Liss, Horticulturist Supervisor, at 414-525-5600.
- With questions about volunteering for FBBG, email Judith Dee, Education Manager, at jdee@fbbg.org.

To find a volunteer opportunity that is a good fit for you, check out these and other organizations available to you on ORS. Then jump right in and let the fun begin.

News from the County Extension Office

by Ann Wied, UW-Madison Waukesha County Extension Outreach Specialist

MG Continuing Education Opportunities on Wisconsin Horticulture Website

Be sure to check out the Wisconsin Horticulture Extension website. Click on the menu "Learning Opportunities". There are several options to choose from. Be sure to view "Webinars for Wisconsin Gardeners". Watch them live or view the recording. The choice is yours. You can obtain close to, if not all of, your continuing education hours this way if needed. Most are 30 minutes in length, but a few are longer.

Go to: <https://hort.extension.wisc.edu/mini-webinars-for-gardeners/>

Growing and Caring for Plants in Wisconsin: Foundations in Gardening

Tell your friends and family that early bird registration is running July 17 to August 14 for the Fall 2023 Foundations in Gardening course. By registering early, participants can save \$26 in the registration fee. Remember, this is not a program for you (who are already a master gardener) but for others who want to learn about gardening. This is also the course that also provides the horticulture knowledge to become a master gardener. Link: <https://hort.extension.wisc.edu/foundations-in-gardening/>

Garden Myths

There are many garden myths shared on the internet or on Facebook. A lot are also passed through conversations. Fortunately, you as master gardeners, know it is important to check the myths by checking science-based sources. On the Wisconsin Horticulture Extension website there are two videos that address two common myths. Check them out sometime. (Links are below.) In addition, I have shared some links to other university myth-busting articles. Share these links with family and friends! I found these sites very interesting.

University of Wisconsin Extension:

Garden Myths: Powdery Mildew and Controls with Diana Alfuth and Dr. Brian Hudelson

Link: <https://www.youtube.com/watch?v=1XgnxY5e2M>

Garden Myths: Torching tent caterpillars with Diana Alfuth and PJ Liesch

Link: <https://www.youtube.com/watch?v=Q90gghvyRil>

Other resources

Washington State University, **Horticulture Myths --**

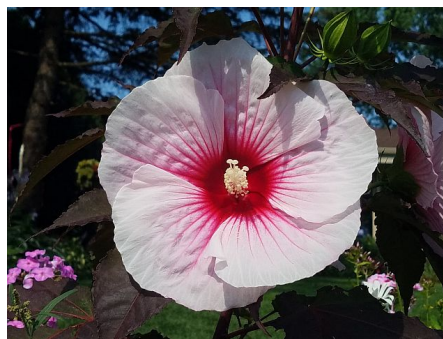
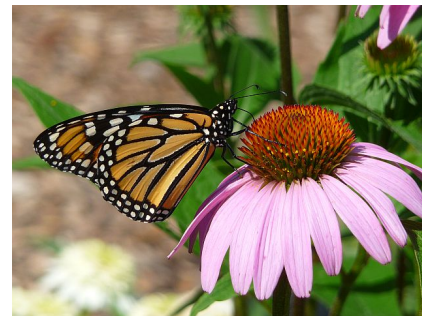
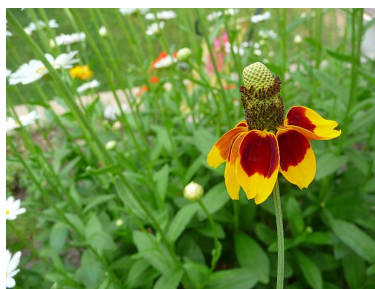
<https://puyallup.wsu.edu/lcs/>

Oregon State University, **Some garden myths and what science has to say --**

<https://extension.oregonstate.edu/gardening/techniques/some-garden-myths-what-science-has-say>

University of Minnesota, **Coffee grounds, eggshells and Epsom salts in the home garden --**

<https://extension.umn.edu/manage-soil-nutrients/coffee-grounds-eggshells-epsom-salts>





Find us on Facebook or Instagram



Instagram



Facebook

Master Gardener - Information/Contact Information

For more information:

Good Earth News Editors:

Sandy Manning

sandymanning@gmail.com

Janet Wintersberger

jhw53045@gmail.com

Kathy Heinrichs

athyk61@hotmail.com

Laurie Baker, Seasonal Photography

On the Web

sewmg.org

State:

Master Gardener Program - University of Wisconsin Extension

mastergardener.extension@wisc.edu

Local:

UW-Madison Extension Waukesha

Waukesha County Administration Center,

515 W. Moreland Road, Room AC-G22, Waukesha, WI 53188

Ann Wied, Outreach Specialist

262-548-7788; ann.wied@wisc.edu

Our Mission Statement

"We are Master Gardeners who serve as a resource in the art and science of gardening to cultivate community connections."