

# MASO PRE-SEASON OFFICIALS MEETING



*August 19, 2024, 8PM*



Division II:



Division III:





# MEETING RULES

- Turn your camera on!
- Mute your mic – all mics will be muted prior to the start of the meeting
- Q/A session will be at the end



# AGENDA

- Welcome / Introductions / Overview (Mark Garcia)
- MASO Updates / In-Season Expectations (Mark Garcia)
- NCAA 2024-25 Major Rule Changes (John Collins)
- NCAA 2024 Points of Emphasis (John Collins)
- Q/A (All)

# WELCOME NEW MEMBERS!



# MASO COVERAGE

- NCAA Division II: 2 conferences
- NCAA Division III: 6 conferences
- NIRSA College Club: 11 Schools
- USSF: EPSL, UPSL, WPSL, EDP
- 10+ NISOA chapters in MASO
- 850 referees across 7 states



# ACCOLADES



- #1 recruiting organization in NISOA in 2023 (recognized by NISOA)
- MASO referees have refereed the following:
  - Ex-FIFA
  - Olympics
  - MLS
  - NCAA Tournament
  - US Soccer Nationals
  - Youth Nationals



# RECENT AWARDS



**PHILIPPE DAVID**, *Regional USSF Referee*  
Awarded the 2024 NPSL  
Referee of the Year for East Region



**JEFFREY PANCIERA**, *NISOA National Referee*  
Awarded the 2023 NISOA Regional  
Referee of the Year for Region 3

# SCALING SUCCESS



## TECHNOLOGY

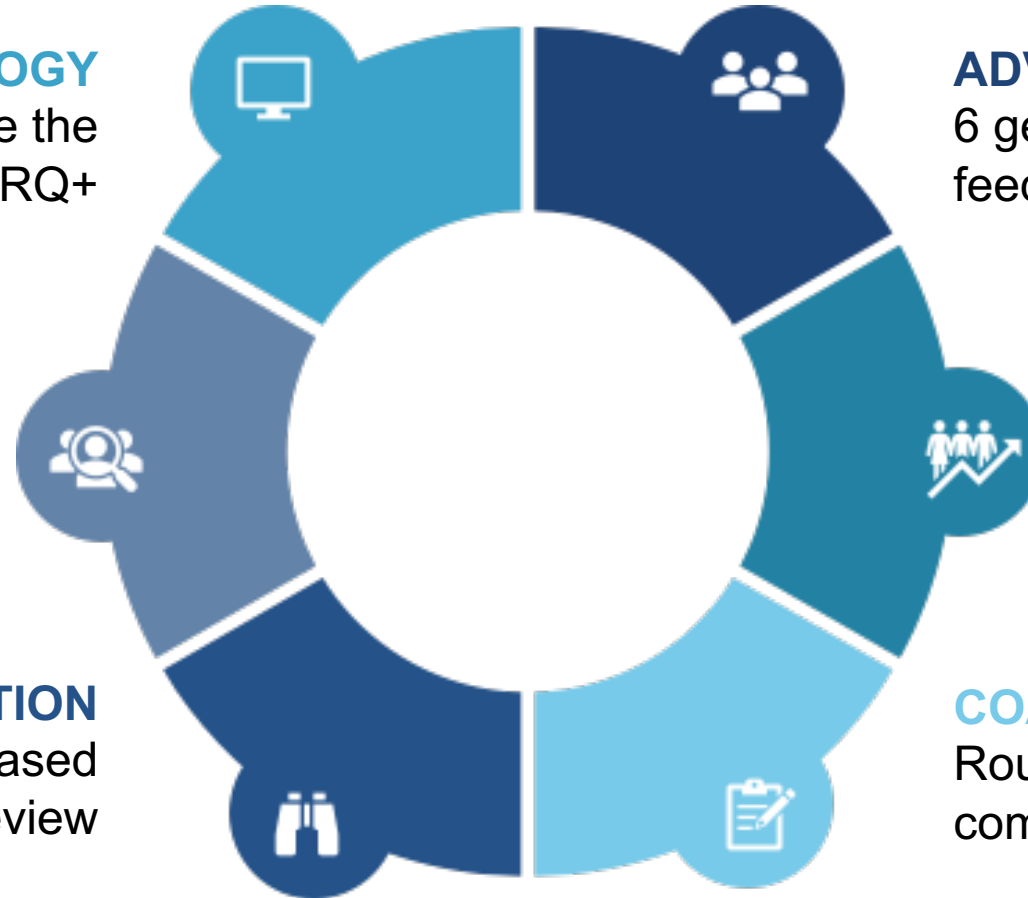
Dedicated team to maximize the benefits & efficiency of RQ+

## ASSIGNING PROCESS

Optimized to assign referees in accordance with game needs based on capability and experience

## OBSERVATION

Ongoing referee assessment based on in-person and video review



## ADVISORS

6 geographical advisors to provide feedback on needs and capabilities

## RECRUITING PIPELINE

Process to identify, recruit, train & mentor new MASO talent using USSF youth/adult leagues

## COACH FEEDBACK

Routine survey and communication with coaches





## ABOUT US



Mid-Atlantic Soccer Officials (MASO) is a highly professional organization dedicated to maintaining the integrity and quality of soccer officiating throughout the Mid-Atlantic Area.

With a commitment to excellence, MASO provides comprehensive training and valuable resources to its officials, ensuring that all officials are well-equipped to officiate at the highest standards.

[ABOUT MASO >>](#)



- MASO Information
- FAQs
- NISOA Information
- US Soccer Information
- Awards
- Merch Store
- Joining MASO

# MASO IN-SEASON EXPECTATIONS



**We will continue to utilize RefQuest (RQ+) as our assigning platform:**

- Keep your RQ+ schedule and availability up to date
- Please accept games within 48 hours of assignment - reminders are sent out every morning at 9 AM
- Please also ensure your profile is up to date with a professional photo
- Game day reminders sent 3 days prior AND 1 day prior to schedule match at 9 AM

**To have a successful year, please follow the following administrative procedures for the season:**

- The referee **MUST** look at the team website: confirm opponent, kick-off time, etc. and confirm with home teams ADs/Coach prior to the match via email at least 72 hours prior to the game.
- The referee **MUST** contact the crew 24-48 hours prior to kick-off confirming arrival and times.
- If you don't receive confirmation from a match official prior to game day, **CALL Mark Garcia ASAP!**
- Arrival time at games is **45-minutes prior during the week** and **1-hour prior on weekends – NO EXCEPTIONS**
  - **IMPORTANT:** Officials should be at the scorer's ***no later than 30-minutes*** prior to kick-off



# MASO IN-SEASON EXPECTATIONS

- 2024 badge must be worn on all matches
- New uniforms (from last year) must be worn – DO NOT WEAR OLD UNIFORMS
  - 3 short sleeves and 3 long sleeves (yellow, orange and purple) – 6 total jerseys must be purchased
  - **IMPORTANT:** do not wear short sleeved jersey with black underarmor underneath
- BE PROFESSIONAL + PROACTIVE
  - You should be introducing yourself to the coaches no later than 30 mins prior to kick-off
  - KNOW THE RULES + THE NEW RULES
  - You're on camera at all times
  - Use Communication Devices if available – HIGHLY RECOMMENDED
    - If schools provide communication devices – you MUST use them
    - **Atlantic East only** – if you do not use communication devices, beeper flags will be provided by schools and must be used

# RECAP



01

ARRIVAL /  
DEPARTURE

02

WEAR THE  
UNIFORM  
PROPERLY

03

DO YOUR  
RESEARCH

04

KNOW THE RULES

05

BUILD RAPPORT  
WITH COACHES /  
STAFF

06

BUILD RAPPORT  
WITH REFEREE  
CREW

07

COMMUNICATION

08

GAME  
MANAGEMENT

09

FITNESS / REST



# MASO 2024-25 OFFICIAL FEES



Division	Conference	Pre-Season	Regular/Post Season	Developmental Games
2	Central Atlantic Collegiate (CACC):	\$187 / \$147 / \$147	\$249 / \$195 / \$195	<b>2-Man System:</b> \$145 / \$145  <b>3-Man System:</b> \$150 / \$130 / \$130
	East Coast (ECC)	\$195 / \$147 / \$147	\$261 / \$206 / \$206	
3	Atlantic East (AEC)	\$180 / \$147 / \$147	\$239 / \$195 / \$195	
	Centennial (CC)	\$180 / \$147 / \$147	\$239 / \$195 / \$195	
	Landmark (LM)	\$120 / \$98 / \$98	\$239 / \$195 / \$195	
	MAC (Commonwealth/Freedom)	\$180 / \$147 / \$147	\$239 / \$195 / \$195	
	Skyline (SC)	\$180 / \$147 / \$147	\$239 / \$195 / \$195	
	United East (UEC)	\$160 / \$130 / \$130	\$239 / \$195 / \$195	
Club	NIRSA College Club	N/A	\$150 / \$130 / \$130	N/A

If fees are incorrect on your end on RQ, please let us know the game number by sending an email



# RED CARD REPORTING



**IMPORTANT**

**If you give a red card during your match, you must complete the following:**

- Call/text Mark Garcia as soon as you get to your car with details of the Red Card.
- Fill out NCAA RQ Ejection Form – [click here](#) **OR** go to RQ > MASO > Forms tab > NCAA Ejection Report. This must be done within 24 hours of the match!
  - Review video of ejection (if available prior to submitting the ejection form)
  - Use NCAA Rule Book for proper verbiage – implement into your report
- Forward confirmation email from RQ to [masoassignment@gmail.com](mailto:masoassignment@gmail.com)

# REMINDER: NCAA EXAM ON RQ+ FOR POST-SEASON ASSIGNMENTS



**Please complete your NCAA Soccer Eligibility Requirements before you step on the field. Now is a good time to complete the following if you haven't already:**

- NCAA Soccer Written Test - 90% is passing score - you get two attempts (Test Closes on **9/3/2024** at 5PM Eastern Time)
- Watch SportRadar Video (takes 11 minutes) - Sports Wagering & Gambling (Video Available until 9/3/2024 at 5PM Eastern Time)
- Consent to Background Check (takes less than 5 minutes) - make sure you select the conferences that you intend to work for
- All Eligibility Requirements are completed at NCAA Soccer Center Circle on RQ+ (Central Hub).
- As a reminder, make sure to visit the NCAA Soccer Center Circle (Central Hub) on RQ+ for the up to date information / presentations on rules, points of emphasis and important announcements.



# NCAA Soccer Rule Changes & Points of Emphasis 2024 Season

**Presented by:**

**John Collins**, *National Coordinator of M/W Soccer Officials*



# **NCAA Soccer**

## **2024-25 RULE CHANGES**

# SOCCER GOAL WITH FOOTBALL UPRIGHTS

## (1.9.6)



- On fields where a combination football/soccer goal is used, the ball is considered out of play if it touches any part of the football structure that extends above the frame of the soccer goal.
- On fields where there is a separate football crossbar that is even with the end line for soccer, the ball is considered out of play if it touches any part of the football crossbar
- This is not a change, but rather a codification of existing practice



# MARKING OF COACHING AND TEAM AREAS (1.12)



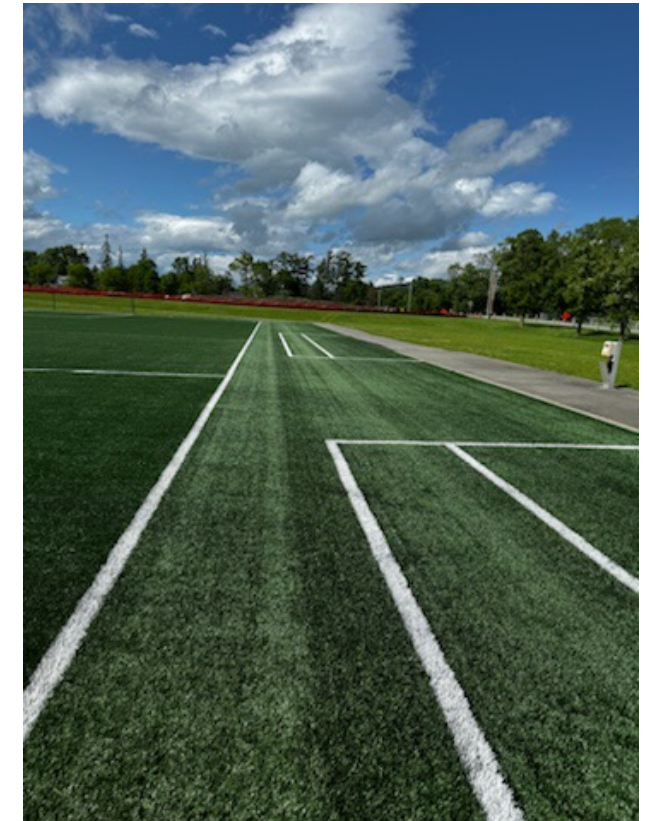
Rule 1.12 has been clarified to be consistent with the plan of the field diagram

If lines are not properly marked so that there are two distinct areas, cones shall be used to indicate the proper spaces for coaches and substitutes

**Coaching Area (20 yards  
by 5 feet) – Coaches Only**

Team Area (20 yards wide  
(behind the coaching area))

This is an editorial change and not a rules change



# BALL PRESSURE (2.1.3)



- The old range of acceptable pressures has been eliminated. The range of what was permitted was so wide that it led to arguments.
- The Rules Committee wants the balls inflated in accordance with manufacturer's recommendations.

# RULE 3.1 INTERPRETATION



- Clarifies the penalty for playing with more than the permitted number of players
- If a team plays with more than the permitted number of players, the extra player(s) shall be removed from the field and cautioned.
- If discovered during live play: “Play shall be restarted with an indirect free kick to the non-offending team from the place the ball was when play was stopped, subject to the restrictions in Rule 13”
- If discovered at a stoppage: “the original restart will apply.”
- Editorial change, not a rules change

# GAME ROSTER REQUIRED (3.2.1 & 6.3.4)



- Teams must now submit rosters as follows:
  - Official Scorer
  - Opposing team
  - Officials
- Rosters are due 15 minutes before game time
- Starters must be designated
- Any suspension served should be indicated by a date on which the suspension was served
- Total cautions and ejections must be listed on copy for opposing team and official scorer
  - Referee copy is not required to have this information

# REENTRY CONDITIONS (3.6) CLARIFICATION



Field players who left the field due to equipment issues that are not violations of 4.1, 4.3, or 4.4 (think torn jersey) or for illness/ injury that are not substituted for (team plays short) may reenter the game (after being beckoned by the referee):

- **during the run of play** or
- at any stoppage of play, including times for normal substitutions, **provided they have received clearance from appropriate personnel.** The player may reenter from the halfway line on the side of the field where they were removed.

**Editorial clarification**



## SUBSTITUTION IN FINAL 15 MINUTES OF REGULATION OR IN ANY PART OF OVERTIME (3.8.8 & 6.3.5.4)



During the final 15 minutes of the second half and during all overtime periods, the timekeeper shall stop the clock as soon as the referee beckons the substitute(s) onto the field **if the game is tied** or **if the leading team substitutes**.

2022-23 required a stoppage for subs by the winning team in the final five minutes.

**This is an attempt to preserve playing time and prevent gamesmanship where subs are used to wind down the clock**

# STOPPING THE CLOCK (6.3.5)



Clarifies that the referee can stop the clock to

- Address an issue involving participant conduct; or
- When the referee believes that time wasting is occurring.

Editorial Change: These points were both included in Approved Rulings in the past.

# OVERTIME (7.2.1) POSTSEASON ONLY



Up to two **sudden-victory** overtime periods of 10 minutes each shall be played.

# RULE 12 CLARIFICATION



No changes, but definitions provided for

12.1.1 Careless

12.1.2 Reckless.

12.1.3 Excessive Force.

12.1.4 Stopping a Promising Attack.

12.1.5. Denying an Obvious Goal Scoring Opportunity.

# CLARIFICATION OF EJECTABLE OFFENSES (12.7.7)



**Engaging in other abusive, threatening or obscene language, behavior or conduct, including**

12.7.7.1 **Leaving the coaching or team area to argue with game officials; or**

12.7.7.2 **Entering the opponent's coaching or team area in an aggressive or confrontational manner.**

**These were instructions/interpretations last year, but are now incorporated directly into the rules book**



# VIDEO REVIEW (5.7)



All of the non-experimental situations from last year remain in place

- Ball completely crossing goal line
- Player identification issues
- Fighting
- VB1/VB2
- Timing errors
- Location of foul called against defending team near penalty area

# VIDEO REVIEW ADDITIONS (5.7.3.6-9)



- Should a **penalty kick** have been called (play can be reviewed either way)
- **Straight red cards**(not second cautions) that are not VB/Fighting (play can be reviewed if given on field or not)
- Determining the proper punishment in cases of **stopping a promising attack** (SPA) or **denying an obvious goal scoring opportunity** (DOGSO)
  - the referee can examine the validity of the decision to call a foul or not and
  - whether the play meets the criteria for denial of an obvious goal scoring opportunity or stopping a promising attack);

# VIDEO REVIEW ADDITION (5.7.3.10)



- Determining whether a goal should have been disallowed for an offside offense.
  - This includes plays where the call on the field resulted in a goal being awarded
  - It also includes plays where offside was flagged on the field.

Note: If the referee has blown the whistle for an offside offense before the ball enters the goal, the play is then not reviewable

This is not VAR as applied under FIFA laws.

- There are no VAR delayed flags
- The intent is to limit this to very close decisions close to goal

# VIDEO REVIEW PARAMETERS (5.7.4.5)



During a video review, the referee may only review and change calls involving the reviewable aspects of the play as per Rules 5.7.3.1 through 5.7.3.10 and Rule 5.7.4.4.

**Calls involving a non-reviewable aspect of the play may not be changed.**

This is an interpretation/clarification. There is no written evidence that the Rules Committee ever supported the idea of the referee having free reign at the monitor



# NCAA Soccer

## POINTS OF EMPHASIS



# BACKGROUND: POINTS OF EMPHASIS



Over the past several seasons, concerns about poor behavior in the coaching and team areas have frequently been raised by:

- Athletics Directors;
- Conference Commissioners;
- Coordinators of Officials;
- NCAA Soccer Committees for all divisions and genders; and
- NCAA Men's and Women's Soccer Rules Committee.

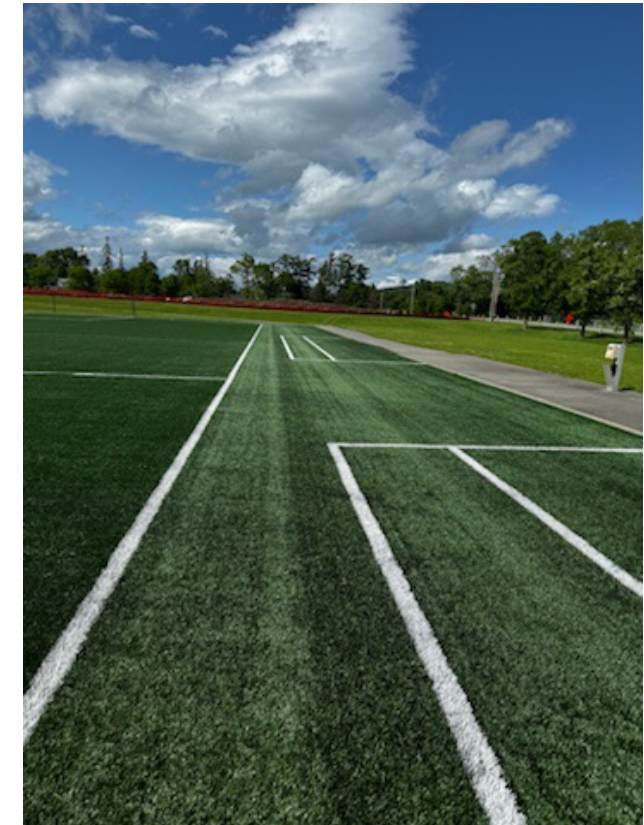
This presentation is intended to highlight areas of positive behavior and emphasize areas for improvement.

All the clips that follow are for teaching purposes only, and are not intended to single out individual officials, players, coaches or programs.

# COACHING AND TEAM AREA MARKINGS



- This is a properly marked coaching and team area.
- First area is for coaches.
- Second area is for substitutes & other bench personnel.
- If lines are not properly marked, cones must be used.



# EXPECTATIONS FOR PLAYERS NOT IN THE GAME



While there is a long tradition in the college game of substitutes standing within the team area to support their teammates, players not in the game must meet the following expectations:

- All substitutes who are standing within the team area or warming-up must wear a pinnie or warm-up that distinguishes them from all field players on both teams.
- **Substitutes must not stand in front of the team area line.** This both hinders the view of the assistant referee and poses a danger to the officials and players.
- **Bench players should confine their verbal remarks to their own teammates** and not engage with opposing players or the officials.
- Under no circumstances may substitutes leave the team area during an altercation (Violent Behavior I ejection, unless they participate, in which case it is a Fighting ejection).

# EXPECTATIONS FOR COACHES



The Head Coach should be the one communicating with the officials

The following behaviors should be punished with a yellow card:

- Kicking or throwing objects in frustration, waving arms in disgust, or finger wagging in reaction to a decision.
- Entering the field of play without permission.
- Acting in a provocative or inflammatory manner.
- Multiple bench personnel arguing a call at the same time.
- Engaging in a verbal confrontation with the opposing coaching staff
- Leaving the coaching or team area to approach the officials during a video review.



# EXPECTATIONS FOR COACHES



The following behaviors should be punished with a **red card**:

- Leaving the coaching or team area to argue with officials
  - The expectation is that officials will issue red cards for egregious violations here
  - Officials should not overreact and issue straight red cards to a coach who is one or two steps outside their area.
- Leaving the coaching or team area to engage in a confrontation with an opposing player, coach or bench personnel.
- Questioning the integrity of the officials.
- Abusive language.



# CLARIFICATION OF EJECTABLE OFFENSES (12.7.7)



Engaging in other abusive, threatening or obscene language, behavior or conduct, including:

- 12.7.7.1 Leaving the coaching or team area to argue with game officials; or
- 12.7.7.2 Entering the opponent's coaching or team area in an aggressive or confrontational manner.

These were instructions/interpretations last year, but are now incorporated directly into the rules book.

# BENCH DECORUM VIOLATIONS BY BOTH TEAMS



There are multiple issues in the previous clip:

1. Team and Coaching Area not marked;
2. Both coaching staffs leave their team areas;
3. The coaches engage in dissent; and
4. The two staffs begin yelling at each other.

This type of behavior violates multiple aspects of proper bench decorum and cannot be ignored. The NCAA expects a caution to each coaching staff in these circumstances.

# LEAVING COACHING AREA TO DISSENT



- The coach in this clip rushes outside the team area and grabs the 4<sup>th</sup> official while arguing a decision.

*Note: Even if the coach did not make contact with the 4<sup>th</sup> official, the NCAA expects an ejection here because of how far the coach runs from the coaching area to argue.*

- The coach's actions significantly escalate a situation, and he is correctly issued a **red card**.
- Note that other staff members are appropriately restraining their players during the altercation and have not committed any misconduct here.



# THANK YOU!



Meeting recording will be distributed to all officials after the meeting – along with this presentation.

***See you on the pitch!***

**[masosoccer.com](http://masosoccer.com)**