

115 W McDowell Rd

Suite 2A

Phoenix, AZ 85003

Business Complex Includes: Arts Studio,
Tattoo Artists, Beauty Spa, Hair Salon and .

Nearby Business: Salon/Spa, Local Restau-
rants, Cafes, Arts Theaters, Museums, Legal
Services, Historic Landmarks and more! Cen-
tral to Downtown and many Historic Dis-
tricts!



Major Cross Streets are W McDowell Rd and N Central Ave

1 Block West of Central Avenue & Light Rail

Approx. 600 Square Feet

Zoned DTC-MCD-1

Lower Level Suite w/Small Patio facing McDowell Rd

*Private Restroom in Suite

*Wood Floors

*Shared Courtyard with Fountain

*Close to Downtown Entertainment and Arts District

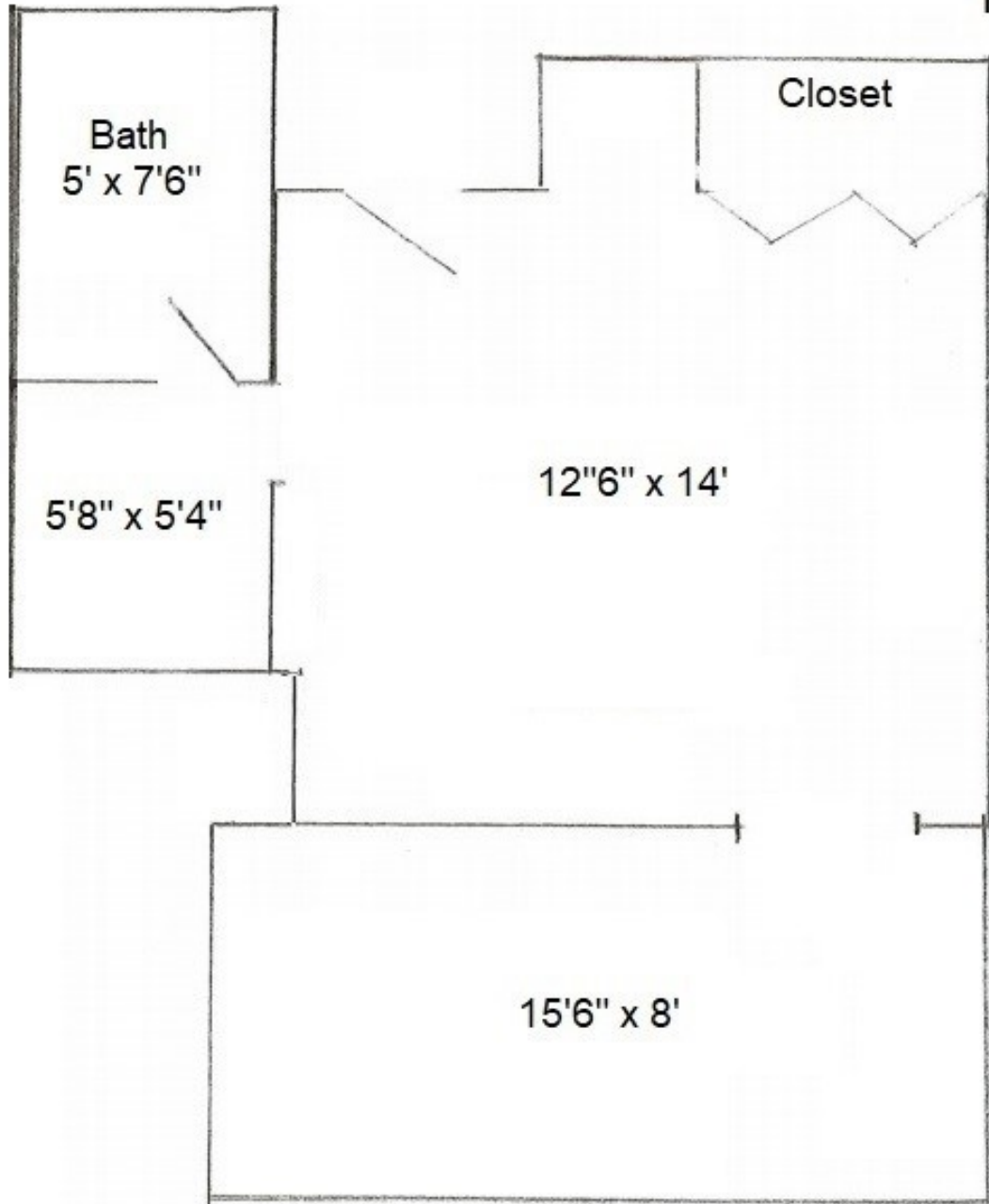
Tenant Responsible for Utilities: Electric

Application, Credit Check & Background Check

12 Month Lease Minimum

Available to View M-F 8am-4pm

W McDowell Rd



Approx. 600 SqFt

115 W McDowell Rd #2A