

115 W McDowell Rd

Suite 2B

Phoenix, AZ 85003



Business Complex Includes: Arts Studio,
Barber, Beauty Spa, Tattoo Artists and .

Nearby Business: Salon/Spa, Local Restau-
rants, Cafes, Arts Theaters, Museums, Le-
gal Services, Historic Landmarks and more!

Central to Downtown and many Historic

Districts!

Major Cross Streets are W McDowell Rd and N Central Ave

1 Block West of Central Avenue & Light Rail

Approx. 700 Square Feet

Zoned DTC-MCD-1

Lower Level Suite w/Small Patio

*Wood Floors

*Private Restroom in Suite

*Shared Courtyard with Fountain

*Close to Downtown Entertainment and Arts District

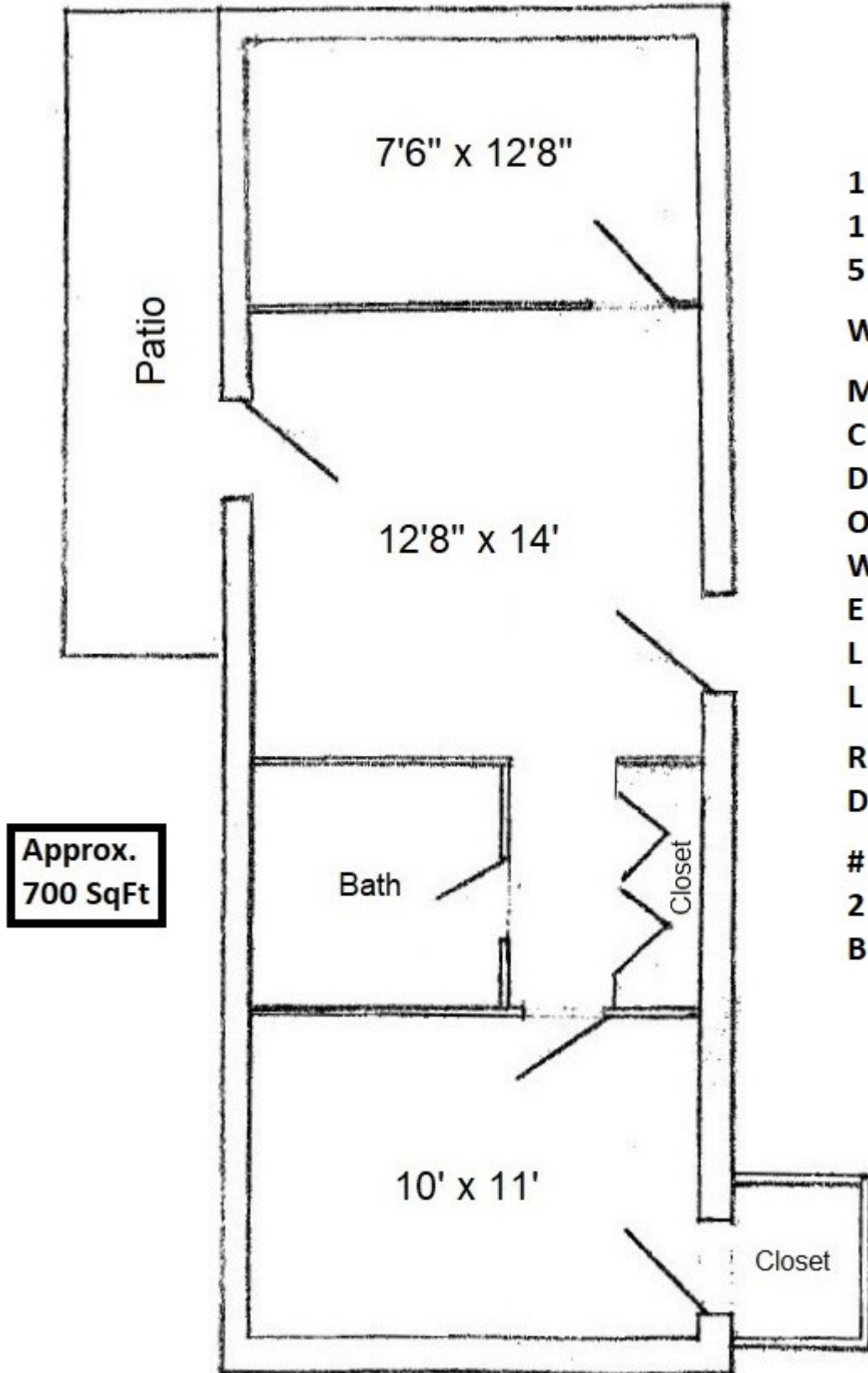
Tenant Responsible for Utilities: Electric

Application, Credit Check & Background Check

12 Month Lease Minimum

Available to View M-F 8am-4pm

W McDowell Rd



1
1
5
W
M
C
D
O
W
E
L
L
R
D

2
B