

301 W McDowell Rd

Phoenix, AZ 85003

Nearby Business: Salon/Spa, Local Restaurants, Cafes, Arts Theaters, Museums, Legal Services, Historic Landmarks and more! Central to Downtown and many Historic Districts!



Medical Office

Major Cross Streets are W McDowell Rd and N 3rd Ave

Approx. 2,613 Square Feet

2 Blocks West of Central Avenue & Light Rail

- Zoned DTC-MCD-1
- 3 Restrooms
- Close to Downtown Entertainment and Arts District

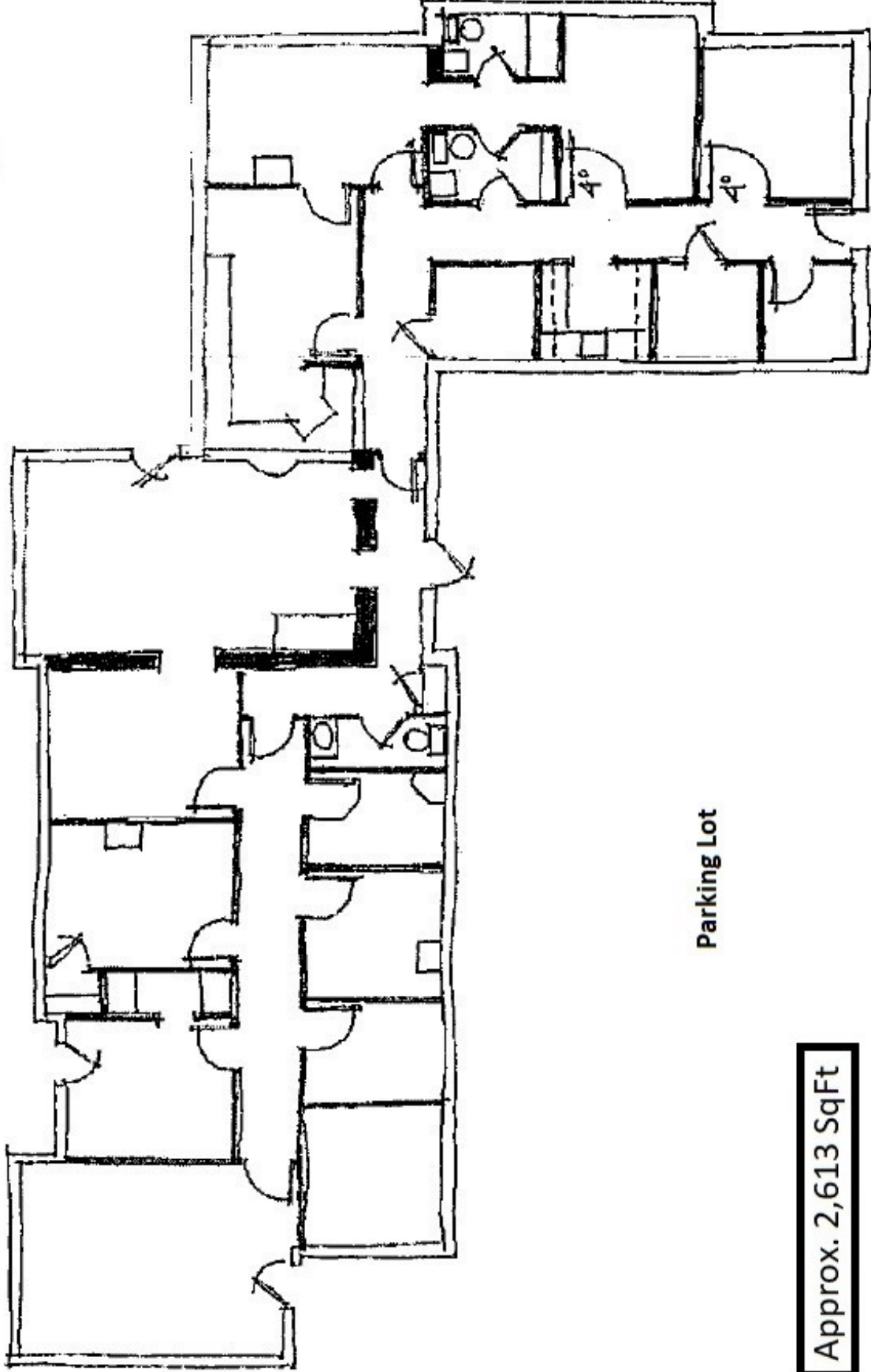
Tenant Responsible for Utilities: Electric, Water, Gas

Application, Credit Check & Background Check

12 Month Lease Minimum

Available to View M-F 8am-4pm

W McDowell Rd



Parking Lot

Approx. 2,613 SqFt