

*3335 N 16th St*  
*Phoenix AZ 85016*

Nearby Business: Banks, Storage Units, Child Care, Restaurants, Bakery/Deli, Barber, Hospice, Community Services, Nail Salons, Bars and more.



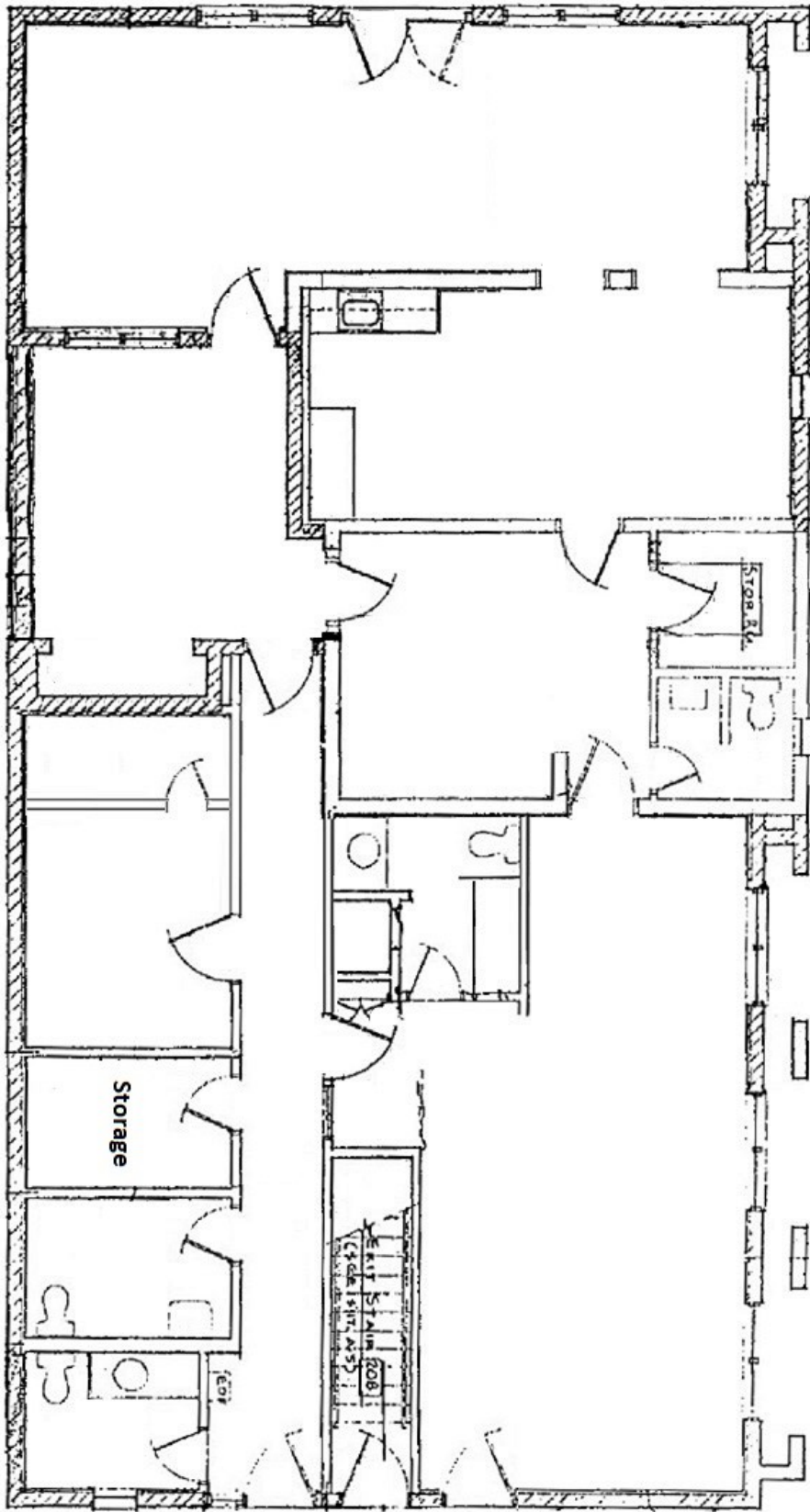
Major Cross Streets are W Thomas Rd and N 16th St  
Close to I-10, Loop 202 and SR-51  
Lot Size 8100 SqFt  
Approx. 5,500 SqFt of Office Space

Stand alone 2 story office building with Basement, multiple offices with reception area and conference Room, upper level with balcony, parking in front/rear gated lot, large basement with two separate large rooms, kitchenette, 4 restrooms (1 w/ shower) and a finished basement! Great visibility along 16th Street.

- \*Monument Sign
- \*Remodeled
- \*Security System
- \*Covered Parking
- \*Laminated Flooring and Tile Throughout

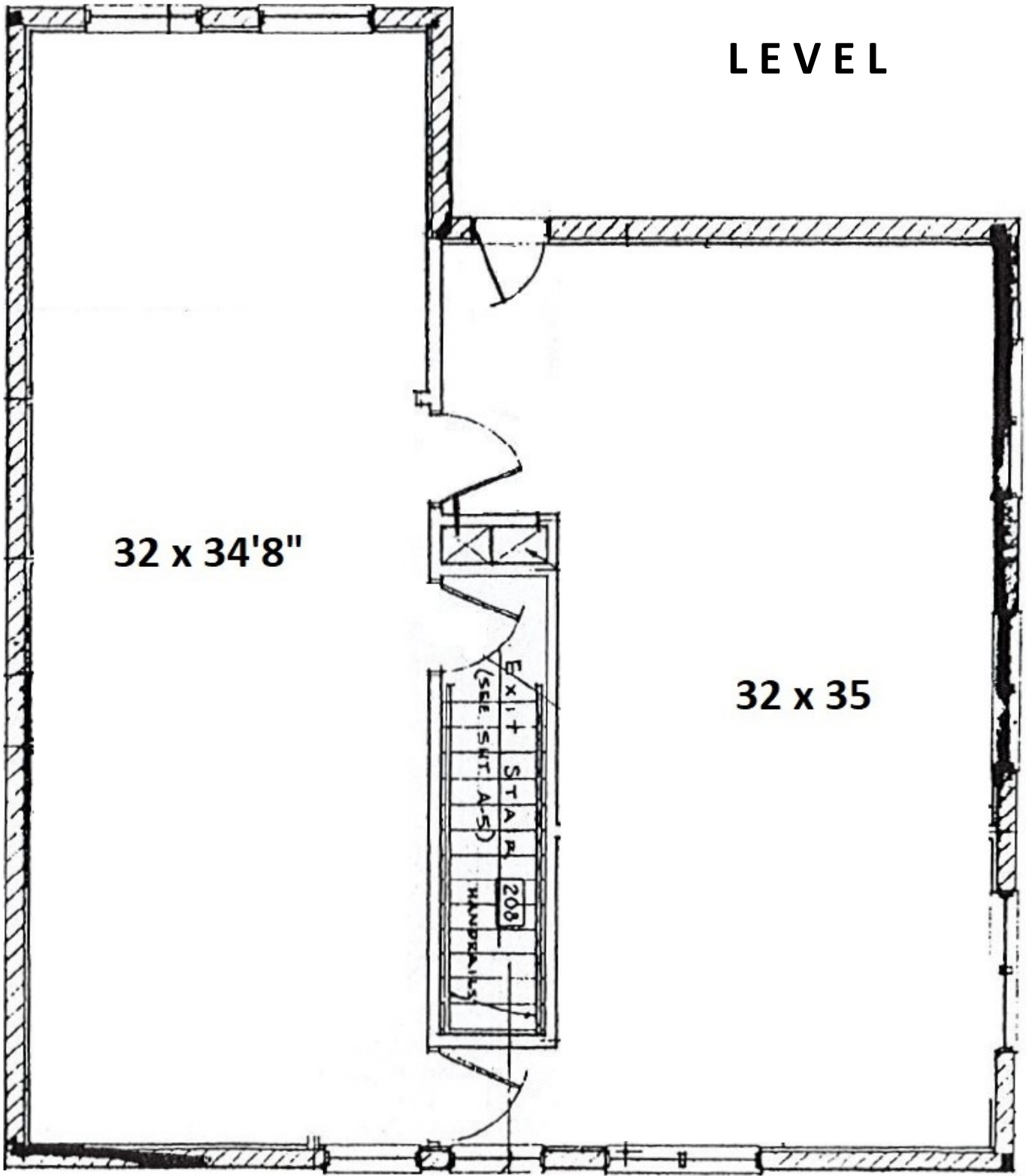
Possible uses: Medical/Dental, Service Business, Retail, Office, Live/Work, Mixed use.  
Built in 1981, Zoned C-2

Tenant Responsible for Electric/Water/Trash  
Application + Background Check + Credit Report  
12 Month Minimum Lease  
Courtesy to Brokers!  
Available to View M-F 8am-4pm



**G  
R  
O  
U  
N  
D  
  
L  
E  
V  
E  
L**

# UPPER LEVEL



# BASEMENT

# LEVEL

