

*901 N 16th St*

*Phoenix AZ 85006*

Business Complex Includes: Smoke Shop,  
Boost Mobile, MetroPCS.

Nearby Business: Local Restaurants, Barber,  
Check Cashing Services, Grocery Store,  
Convenience Store, Gas Stations and Auto  
Parts Store.



Major Cross Streets are E Roosevelt St and N 16th St.

Front and Rear parking available. Single Story End Unit.

Approx. 2,661 Square Feet

Zoned C-1

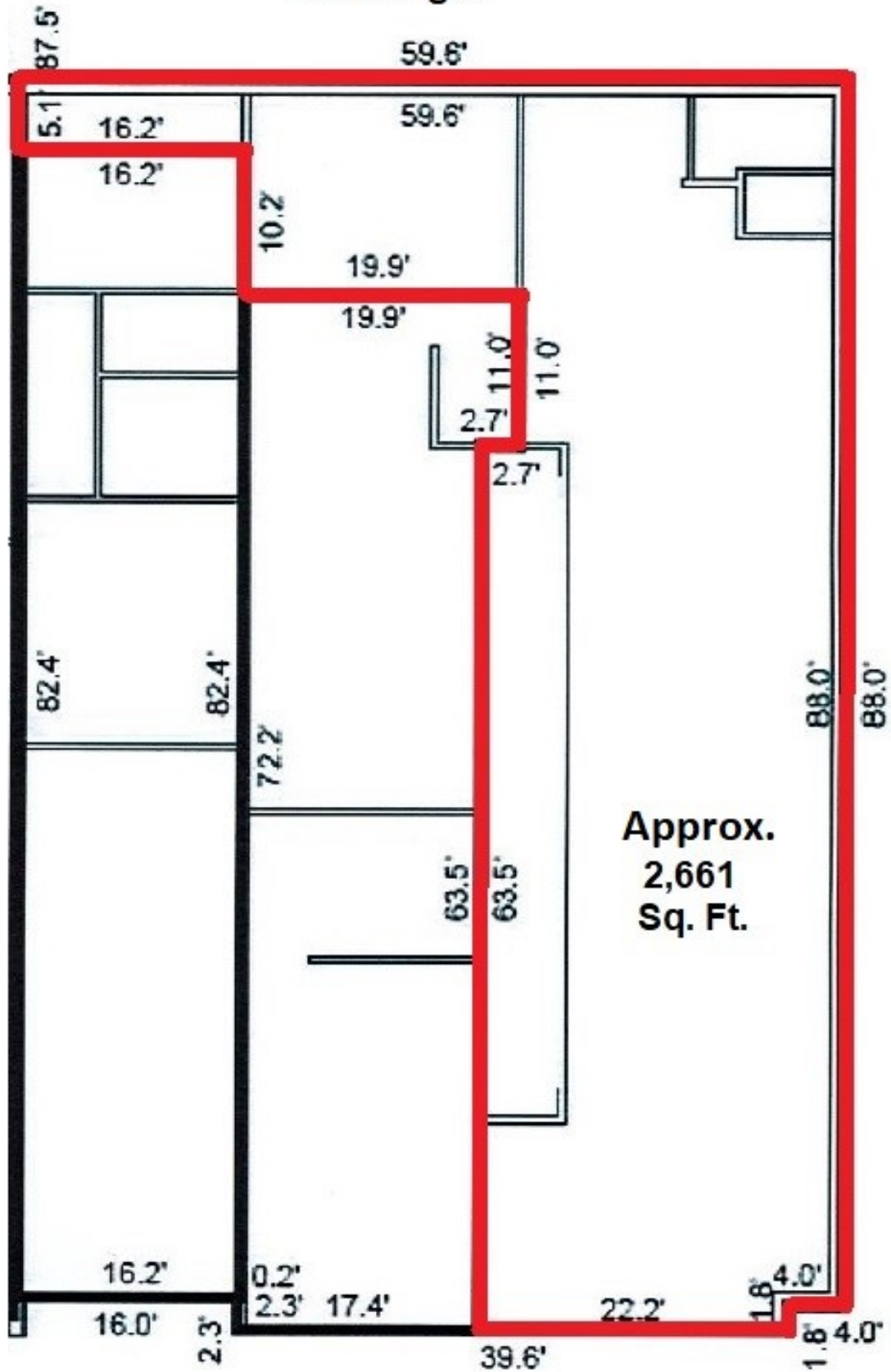
Use as Laundromat

Tenant Responsible for Electric, Water & Gas  
Application, Credit Check & Background Check

12 Month Lease Minimum

Available to View M-F 8am-4pm

# Building 3



## Unit 901