

903 B N 16th St

Phoenix AZ 85006

Business Complex Includes: Smoke Shop,
Boost Mobile, MetroPCS.

Nearby Business: Local Restaurants, Barber,
Check Cashing Services, Grocery Store,
Convenience Store, Gas Stations and Auto
Parts Store.



Major Cross Streets are E Roosevelt St and N 16th St.

Front and Rear parking available. Single Story, Ground Level.

Approx. 1,334 Square Feet

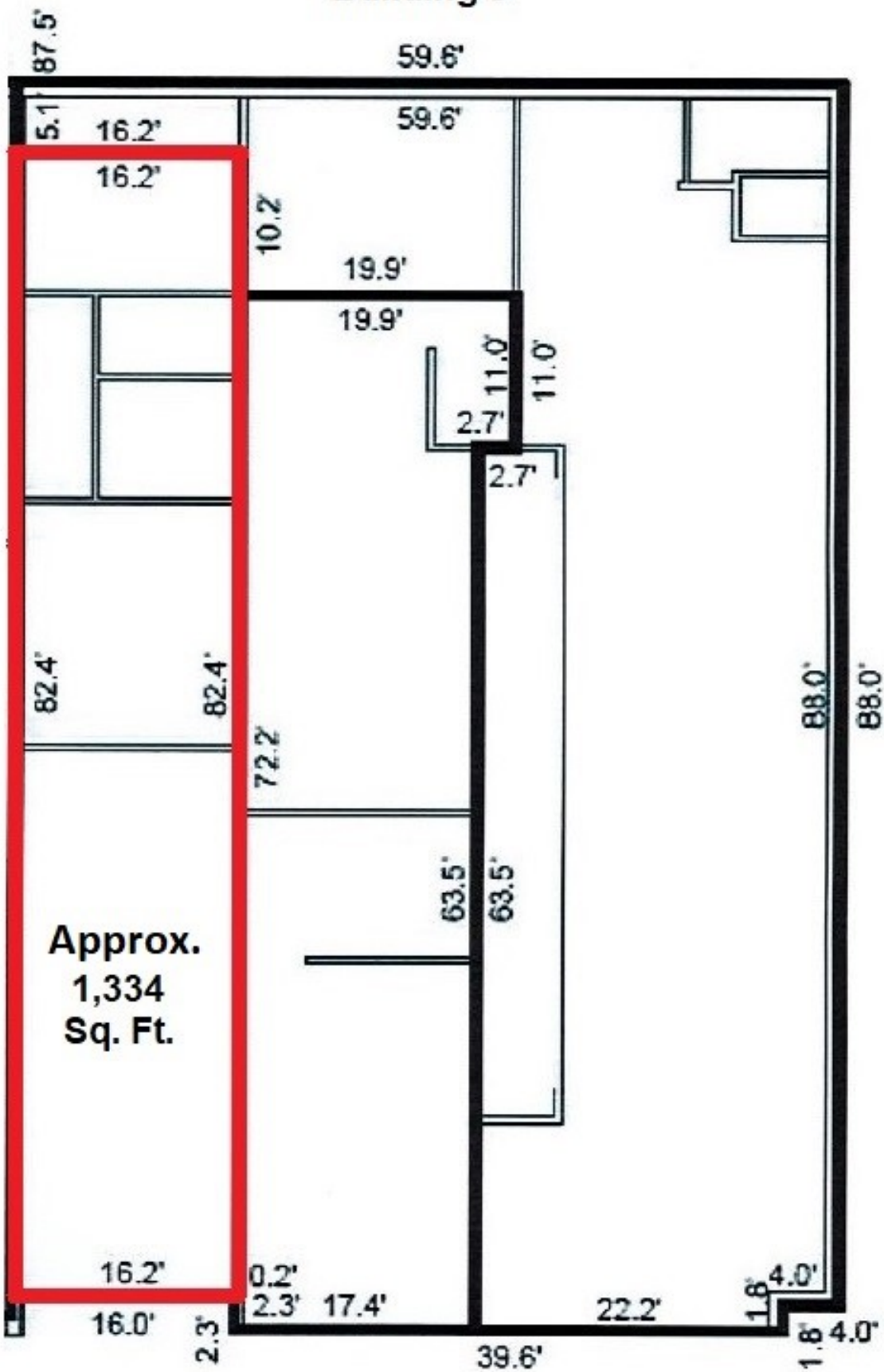
Zoned C-1

Tenant Responsible for Electric Utilities & Trash
Application, Credit Check & Background Check

12 Month Lease Minimum

Available to View M-F 8am-4pm

Building 3



Unit 903 - B