

*905 N 16th St*

*Phoenix AZ 85006*

Business Complex Includes: Smoke Shop,  
Boost Mobile, MetroPCS.

Nearby Business: Local Restaurants, Barber,  
Check Cashing Services, Grocery Store,  
Convenience Store, Gas Stations and Auto  
Parts Store.



Major Cross Streets are E Roosevelt St and N 16th St.

Use is Restaurant/Food Store. Large space with equipment including Hood, Walk-in, Bread Risers, Refrigerators, etc. Roll-up door for deliveries off of rear parking lot. Storefront on 16th St.

Front and Rear parking available. Single Story, Ground Level.

Approx. 4,015 Square Feet

Zoned C-1

\*Freezer

\*Air Conditioning/Central Heat

\*High Ceilings

\*Kitchen Facilities

\*2 Private Restrooms

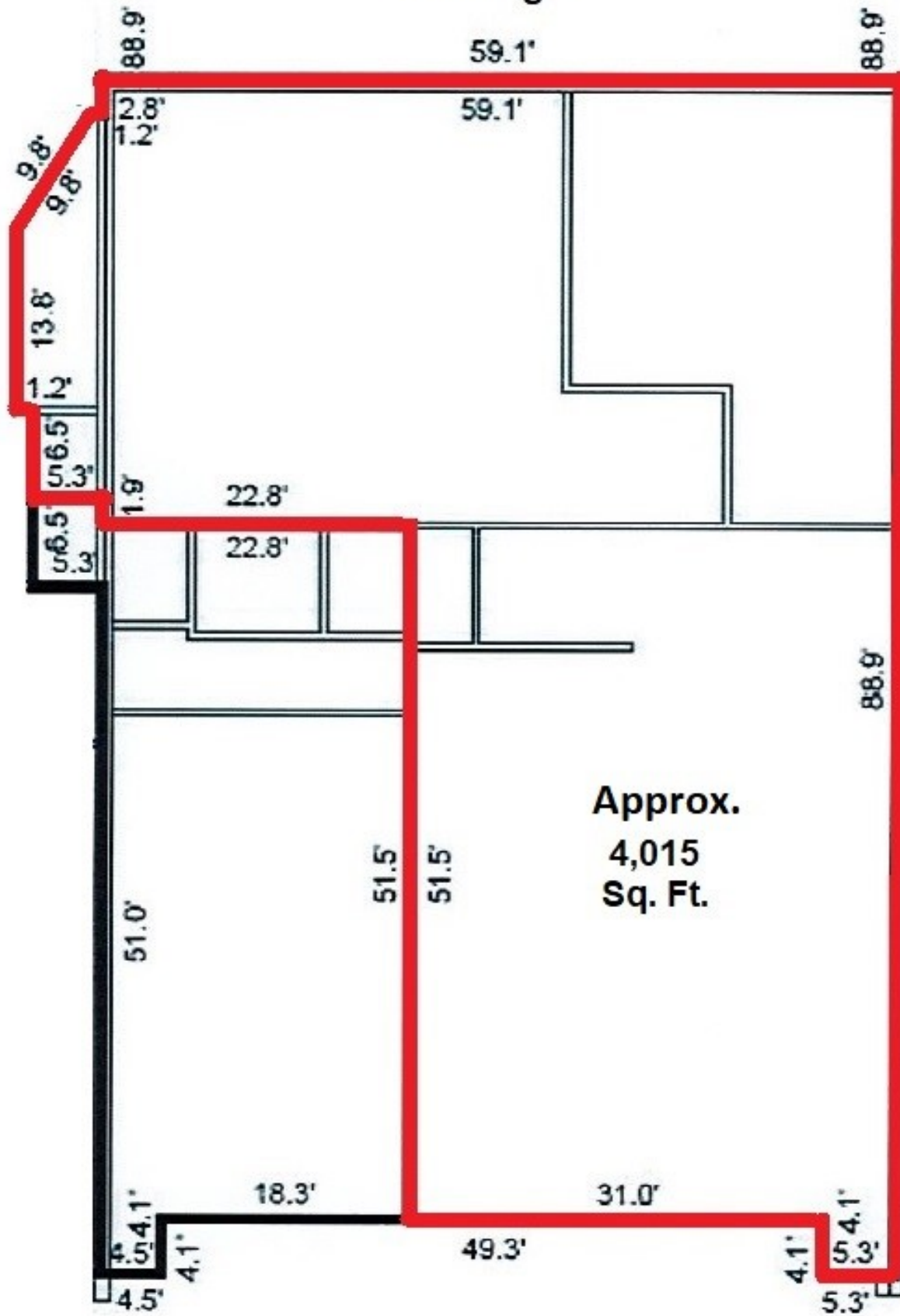
\*Natural Light

Tenant Responsible for Electric Utilities & Trash  
Application, Credit Check & Background Check

12 Month Lease Minimum

Available to View M-F 8am-4pm

# Building 2



Approx.  
4,015  
Sq. Ft.

Unit 905