

907 N 16th St

Phoenix, AZ 85006

Business Complex Includes: Smoke Shop,
Boost Mobile, MetroPCS, Wash & Dry
Laundromat.

Nearby Business: Local Restaurants, Bar-
ber, Check Cashing Services, Grocery
Store, Convenience Store, Gas Stations
and Auto Parts Store.



Major Cross Streets are E Roosevelt St and N 16th St.

Front and Rear parking available. Single Story, Ground Level.

Approx. 1,227 Square Feet

Zoned C-1

New 5ton AC/Heat Pump

Private Restroom

High Ceilings

Fresh Paint

Tile Floors

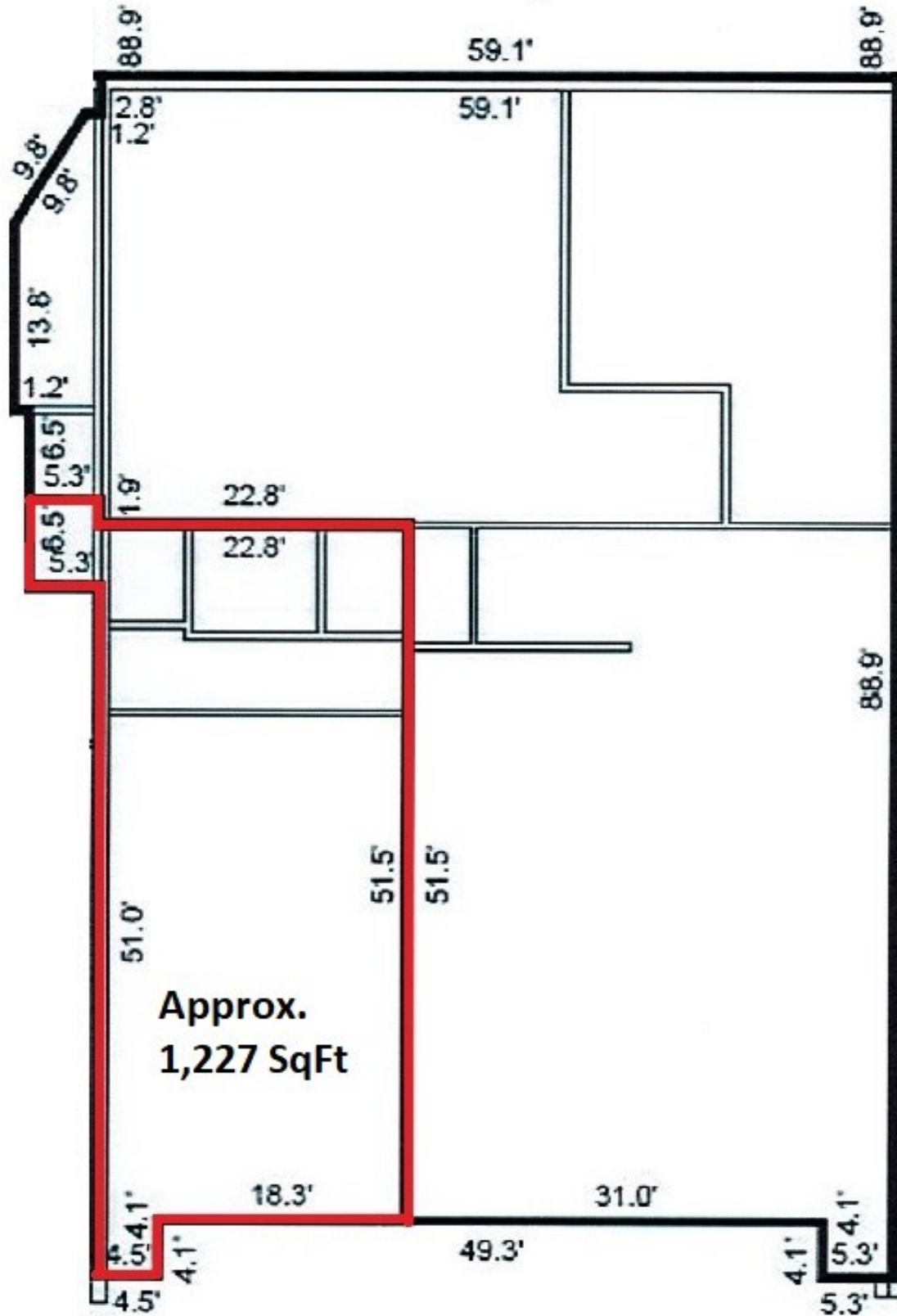
Tenant Responsible for Electric Utilities & Trash

Application, Credit Check & Background Check

12 Month Lease Minimum

Available to View M-F 8am-4pm

Building 2



Approx.
1,227 SqFt

Unit 907