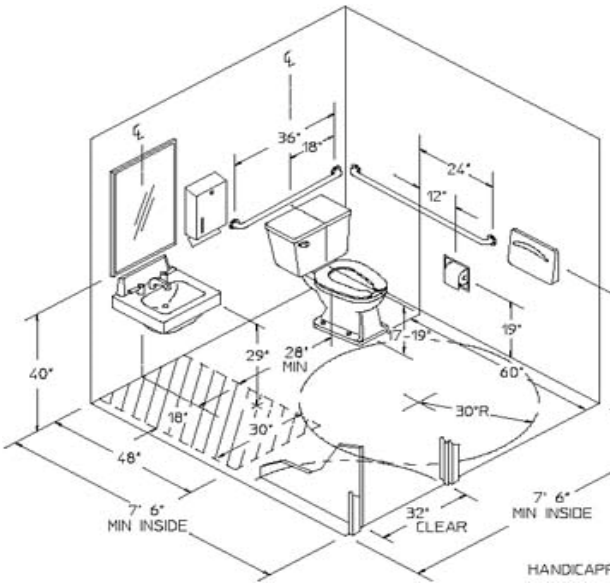


Are your restrooms ADA compliant?

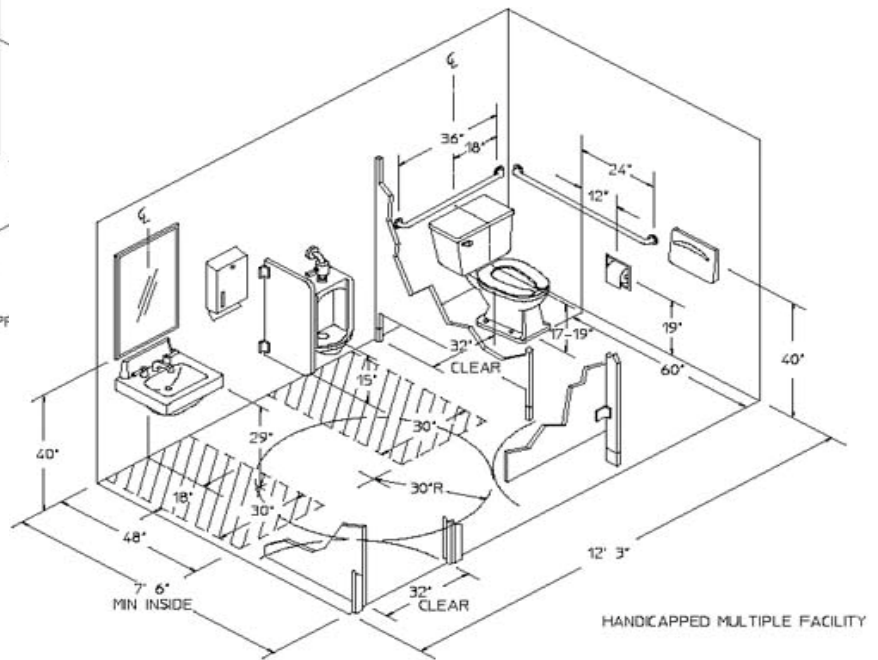
This tip is a handy reference guide to dimensional requirements for restrooms complying with California Title 24 Handicapped Accessibility Law, a facsimile of the federal Americans with Disabilities Act (ADA).

The minimum inside room dimensions are the most critical, fixtures can be moved within the toilet room but if one must enlarge the room itself it will add significant cost to an ADA compliance upgrade.

Single accommodation 7.5 feet x 7.5 feet



Multiple accommodation 7.5 feet x 12.5 feet



An informational client bulletin prepared by TiCon Commercial Inspection which specializes in commercial and industrial per-purchase and pre-lease property assessment in the Bay Area and the California Central Valley

As a part of the pre-purchase inspection TiCon Commercial inspection takes over 120 measurements throughout the property to determine compliance with California Title 24 access regulations for the disabled.