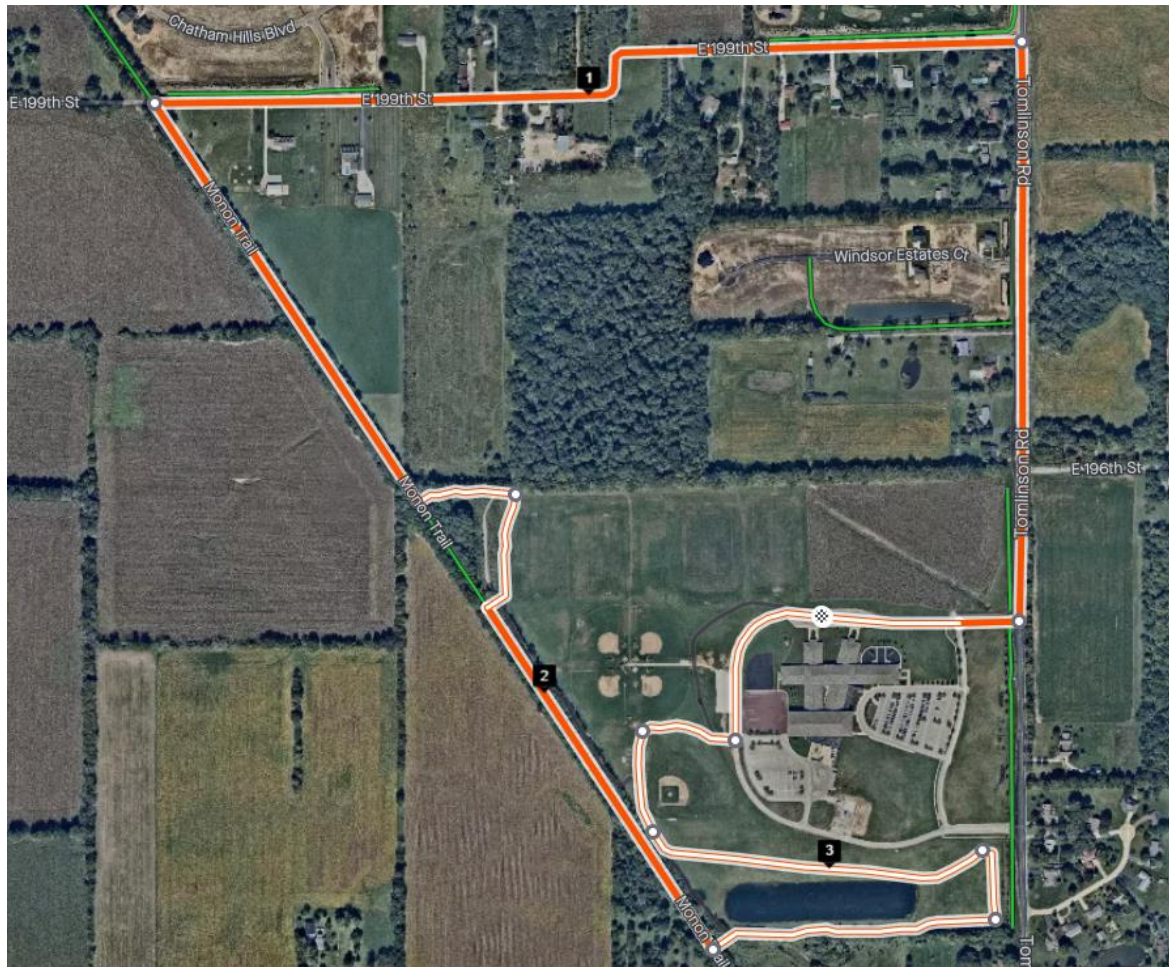


FLY HIGH 5K 2022 Course Map



Directions-

Start and Finish on the North Side of the building

From the parking lot, East to Tomlinson

Left on Tomlinson

Left on 199th Street

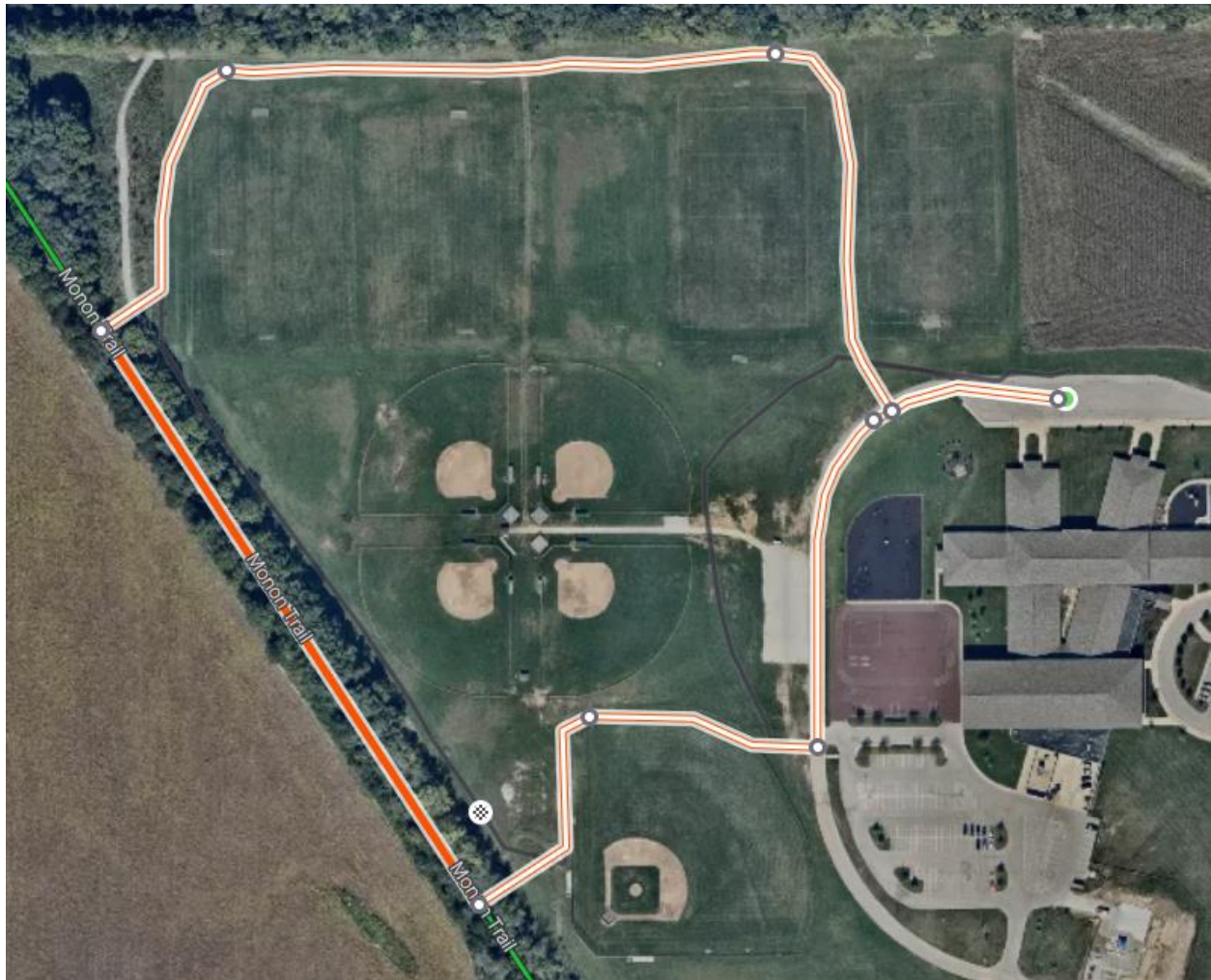
Left on Monon Trail

Water Station at Mile 1.55

Left to wooded trail

Continue on marked cross country course until finish

1 Mile Walk Course



Directions-

Start and Finish on North side of the building

Follow the driveway past the gravel parking area

Turn right onto the cross country course at the 1 Mile Course sign

Follow the marked trail past the baseball diamond

Make a right turn at the crossroads, a course marshal will be there to assist with directions

Walk along the trail on the tree line

Take a slight right to stay on the trail as you pass the hill

Turn Right to head east along the tree line

Turn right between the fields

Follow the marked course to the finish