



STRAIT  
*Ranches*



HEFTE RANCH

2022 STRAIT-HEFTE

*Tried & True*

OCTOBER 14-15, 2022 **PRODUCTION SALE**

320 FM 3059 | STREETMAN, TEXAS



Welcome



*Dear Friends and Fellow Cattle Producers,*

We are excited to be hosting the Fifth Annual Strait-Hefte Tried & True Production Sale along with Hefte Ranch. We are so appreciative of the support this sale and our Santa Gertrudis genetics have received. Our family has been blessed with the opportunity to raise Santa Gertrudis cattle for over 70 years. We are proud to be an integral part of the progress and momentum that the Santa Gertrudis breed has experienced. We are focused on continuous improvement and identification of superior genetics to meet the needs of our commercial and seedstock customers.

This year's female offering contains numerous lots produced via embryo transfer as well as an opportunity to IVF any wholly owned cow in the Strait Ranches herd born prior to June 1, 2021. You will find our base line genetics like LJV Mason, SR Genesis 75/3, KR Catalyst 531/15, and SR Arkoma 30/0 throughout our offering. Our bred females have been exposed to a variety of bulls through AI and natural service including SR Paramount 30/H4, SR 87/7 "Wickham", SR MPact 30/F2, SR Marksman 33/19, QVF Red Rock 82H11, FC Savage 25/4 ET, Hefte Ranch D25, Harris Guns Up 216/5, Hefte Ranch G70 Final Draft, Red Doc Lumbre 8509, Kings Amigo KR766/20, Four J Focus 19/243, Urbanosky 035, Wendt 9386 and SR 38/19. We believe that our bull offering includes several bulls with AI sire potential but are most excited about the group as a whole. All bulls were developed on a silage-based ration at Land Air, Inc on Brown Ranch in Beeville, Texas.

Words cannot express the gratitude we have for all the prayers, love and support we have received over the last year after the loss of our husband, father, grandfather and leader, Y.N. Strait. He would be very proud of this offering, as we are to be able to continue his vision and legacy. We have a wonderful team at Strait Ranches consisting of Henry Zarate and Su Samuelson and Jesus Rodriguez. We are extremely thankful for their hard work and dedication.

We invite you to join us on October 14th and 15th in Streetman for the sale. We would also love to have you out prior to this date to view the sale cattle. Online bidding will be available on sale day via DVAuction.com. If you have any questions about our offering, please feel free to call Yancey (972.841.0989), Henry (361.920.0718) or Callie (210.837.1199).

We are so very thankful for each of you, for health, family, friendships, recent rains, lasting legacies and the power of hard work, dedication and Santa Gertrudis genetics.

Many thanks,  
The Y.N. Strait Family



*The Y.N. Strait Family*

Cynthia, Yancey, Heather,  
Avery, Arden, Callie, Jake,  
Piper and Nellie

Henry Zarate  
and Su Samuelson



Dear Friends,

It is hard to believe that this is our FIFTH Annual Strait-Hefte Tried & True Production Sale! The first one seems like yesterday, and yet so much has changed over those five years. We are so thankful and blessed to be here in Year Five. We cannot begin to express our appreciation for all the support, friendship and confidence in our cattle that we have received over these five years.

Regarding Year Five, this has been the hottest, driest summer on record in our part of South Texas. Fortunately, our Santa Gertrudis cattle are built for this, and have been able to persevere in these trying conditions. We are very pleased with this set of sale cattle and the fact that they have thrived during this ongoing drought. KR 191/13 continues to have a large impact on our herd. As his daughters enter the mature cow herd, we are thoroughly impressed with their fertility and production. We are also excited about our herd sire, Hefte Ranch F14 Tomcat. He is the service sire to many heifers in this sale, and you will notice that he will be playing a big part in our future at Hefte Ranch.

We are always happy to discuss cattle, so please feel free to give us a call to discuss any cattle that catch your eye. It is a great feeling to see our customers succeed with our cattle, and we want to make sure everyone gets the lot that best fits their requirements.

Thank you again to the Y.N. Strait Family. They are such incredible hosts, and such great people, we are honored to be a part of this sale with them.

Truly,  
The Hefte Ranch Family

Petty & Hefte Families

Lauri, K.T., Lauryn, Hannah  
Kenneth, Mary Tom,  
Kathryn, Scott & Carson



The Thigpen Family

Kade, Camille,  
Kelley & Emerson





## Schedule of Events

### FRIDAY, OCTOBER 14, 2022

- 1:00 PM Cattle Viewing
- 6:30 PM Social & Dinner

### SATURDAY, OCTOBER 15, 2022

- 8:00 AM Cattle Viewing
- 8:00-10:00 AM Breakfast
- 10:30 AM **TRIED AND TRUE PRODUCTION SALE**

Lunch will be served after sale.

### CONTACT INFORMATION

#### Strait Ranches:

- Yancey Strait, 972.841.0989
- Callie Loden, 210.837.1199
- Henry Zarate, Manager, 361.920.0718

#### Hefte Ranch:

- Kathryn Hefte, 210.414.2493
- Kade Thigpen, 830.426.1366
- K.T. Hefte, 361.813.4937

### AUCTIONEER

Leo Casas

### LOAD OUT

Load out to begin after completion of the sale. The purchased animal is the sole responsibility of the buyer, but the sellers agree to maintain and care for all animals through Monday, October 17, 2022 at no additional cost. The seller is not responsible for any injury or loss after the animal is sold. If other arrangements are needed then those must be agreed to before the sale.

## Docility Score Descriptions

Score	Description
1	Very Comfortable- Bull stands quietly when evaluated.
2	Comfortable- Bull slowly walks when evaluated.
3	Uncomfortable- Bull walks faster when evaluated.
4	Nervous- Bull desires to return to herd when evaluated.
5	Very Nervous- Bull is aggressive when evaluated.

\*\*The above scores are presented as an additional tool to assist in the selection process, but all bulls may act differently in new/different situations/locations.

### TRANSPORTATION

We have arranged professional hauling services to be available sale day for buyers needing animal transportation. Central ranch drop off locations across the eastern United States and Texas can be coordinated. If you have any questions or need transportation assistance please contact Darrell Pitchford, 903.388.2288

### HEALTH PAPERS

Health papers for interstate shipment within United States will be provided for all animals.

### SIGHT UNSEEN PURCHASES

All purchases made on order or through the internet are 100% satisfaction guaranteed upon delivery.

### HOTEL ACCOMMODATIONS

Code for listed hotels: *Strait Ranches*

#### LaQuinta

Fairfield, TX | 903.389.7441

#### Holiday Inn Express & Suites

Fairfield, TX | 903.389.2300

#### Holiday Inn Express & Suites

Corsicana, TX | 903.874.7440

This sale will be broadcast live on the internet.

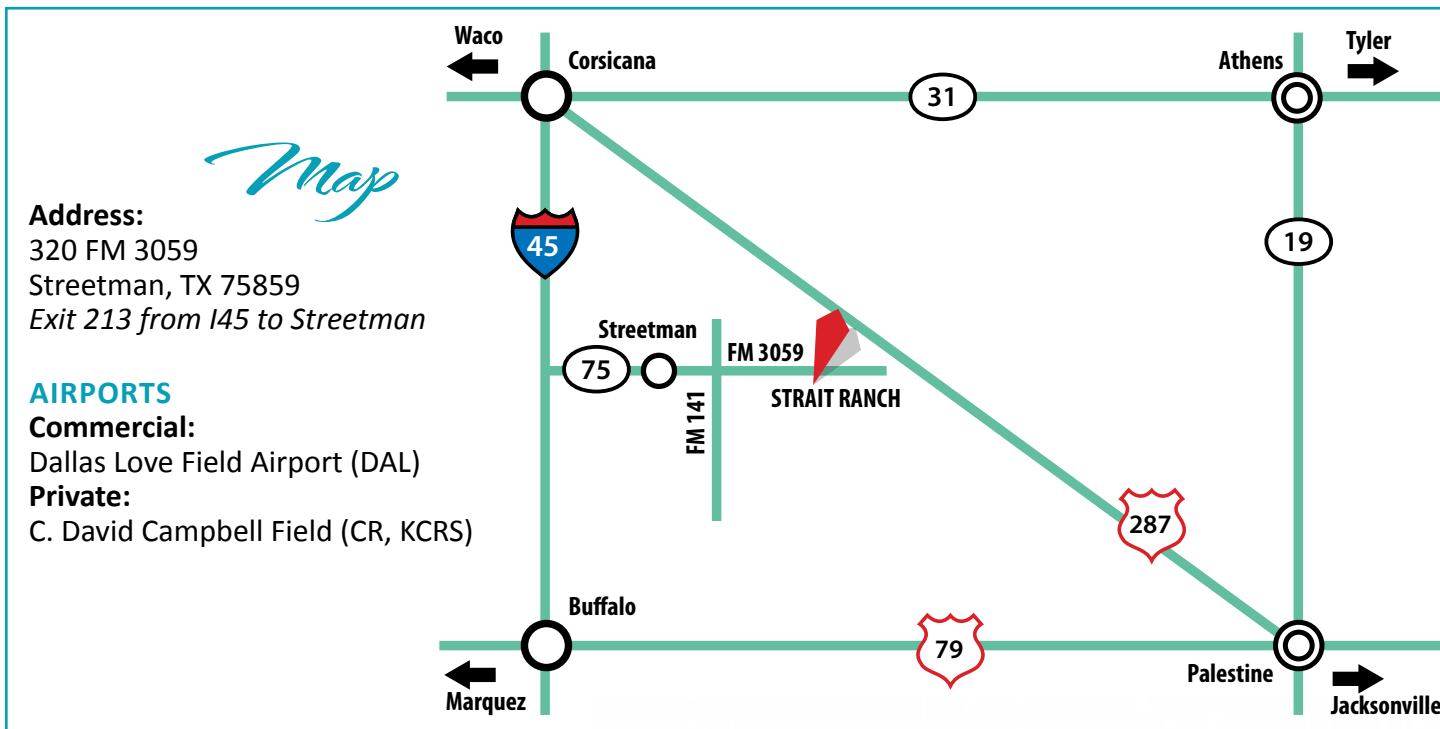
**DVAuction**  
Broadcasting Real-Time Auctions  
Real time bidding & proxy bidding available.

Serving Tex-Mex for over 70 years!

**TEKA MOLINO**  
EST. 1937  
TEX-MEX RESTAURANT



# Sale Information



## September 2022 Percentile Chart

%	BW	WW	YW	MILK	TM	SC	HCW	REA	MARB	FT
Best	-5.8	63	75	14	33	1.07	34	0.6059	0.9023	0.1640
Top 1%	-2.0	33	44	8	21	0.76	15	0.2929	0.4060	-0.0468
Top 2%	-1.6	29	39	7	19	0.69	12	0.2542	0.3418	-0.0358
Top 3%	-1.4	27	36	6	18	0.65	11	0.2291	0.3008	-0.0299
Top 4%	-1.4	25	34	5	17	0.63	10	0.2119	0.2720	-0.0263
Top 5%	-1.3	24	32	5	16	0.62	9	0.1966	0.2491	-0.0236
Top 10%	-1.1	20	26	4	14	0.56	6	0.1487	0.1790	-0.0162
Top 20%	-0.8	15	20	2	11	0.49	3	0.0940	0.0987	-0.0097
Top 30%	-0.6	12	15	1	10	0.44	0	0.0571	0.0485	-0.0062
Top 40%	-0.4	10	12	0	8	0.41	-2	0.0269	0.0153	-0.0038
Top 50%	-0.2	7	8	0	7	0.37	-3	0.0030	-0.0100	-0.0016
Top 60%	0.1	5	5	-1	6	0.35	-5	-0.0193	-0.0324	0.0009
Top 70%	0.4	3	2	-2	4	0.32	-6	-0.0418	-0.0546	0.0038
Top 80%	0.7	0	-1	-3	3	0.30	-8	-0.0649	-0.0793	0.0080
Top 90%	1.1	-4	-6	-4	1	0.25	-10	-0.0976	-0.1144	0.0150

All EPDs and footnotes in the catalog are based off of the September 2022 Santa Gertrudis Breeders International (SGBI) EPD run. SGBI updates EPDs and percentiles on a monthly basis (please visit [www.santaquertrudis.com](http://www.santaquertrudis.com) for the most up to date information).

CATALOG DESIGN

Cattle Solutions

979.820.8362, kyle@cattlesolutions.com



VIDEOS PRODUCED BY

Ideal Video Productions

Wade Fisher, www.idealvideoproductions.com





# NUTRITION MATTERS



**LYSSY & ECKEL  
FEEDS**

*Since 1945*

CALL ANY OF OUR CONVENIENT LOCATIONS TO ARRANGE DELIVERY OR PLACE AN ORDER.

POTH  
111 E WESTMEYER ST.  
POTH, TX  
830-484-3314

GEORGE WEST  
101 LEONA ST.  
GEORGE WEST, TX  
361-449-2218

HONDO  
2005 19TH ST.  
HONDO, TX  
830-426-3351

LLANO  
105 E YOUNG ST.  
LLANO, TX  
325-247-4147

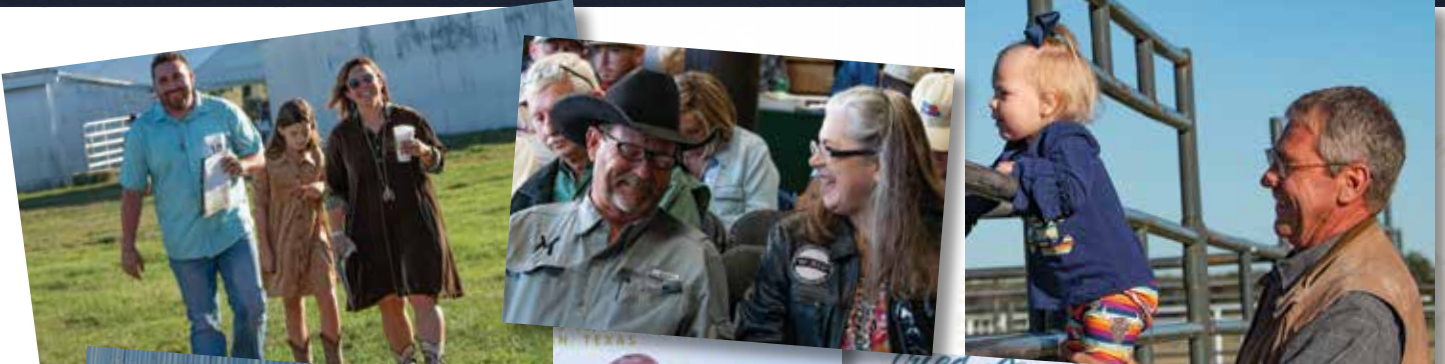
ROOSEVELT  
3861 W STATE LOOP 291  
ROOSEVELT, TX  
325-446-2604



[WWW.LEFEEDS.COM](http://WWW.LEFEEDS.COM)









SR MS Paradigm 30/H7 is a full sibling to the SR Paramount 30/H4 bull that Reese Ranch bought in the 2021 Tried & True Production Sale for \$27,000. She is sired by the SR Paradigm 135/7 bull owned by Quail Valley Farms and out of the top cow at Strait Ranches, SR Arkoma 30/0. 30/H7 is also a maternal sister to SR Genesis 75/3, SR Mpack 30/F2 (owned by Vesper Ranch), SR Surge 4/19 (owned by Wiley Ranch), SR 30/F3 (owned by Korban Cattle), and SR Gulf Strait 25/20 (owned by Wiley Ranch). 30/H7 currently has 8 EPDs that rank in the Top 40% and tremendous index values. We believe in reproducing cows that raise herd sires and this young cow is well on her way to raising a herd sire in her first attempt. We aspirated 30/H7 as a yearling for Quail Valley Farms.



LOT 1



**SR MS PARADIGM 30/H7**



20200735 • 30/H7 • 1/26/2020 • Polled • Pair

KR CATALYST 531/15	KR 225/10	Bal Idx 3%
	KR 310/12 2YO	
<b>SR PARADIGM 135/7</b> 20175656	P H WELDER 9/4/13	C/C Idx 4%
P H WELDER 7/342	MISS GRANDVIEW 545	
MR WINROCK N127	WR NEW MILLENNIUM H233	Term Idx 4%
	MASDEN & SON 225/9	
<b>SR ARKOMA 30/0</b> 1289177	CHF SAMBO 514	
PERNER D 931	DOUBLE P RANCH 345	

	BW	WW	YW	MILK	TM	SC	HCW	REA	MARB	FT
EPDs	-1.4	6	10	-4	2	0.57	4	0.12	0.31	0.00
Acc	.24	.24	.28	.17	--	.10	.10	.25	.36	.39
%Rank	5%	55%	40%	85%	85%	5%	15%	10%	1%	65%

AI to QVF Red Rock 82H11 (20200393) 4/18/2022. NS to QVF Red Rock 82H11 (20200393) 5/3/2022-7/7/2022, SR 38/19 (20190191) 7/7/2022-7/12/2022, SR 87/7 (20171842) 7/12/2022-9/27/2022.

Strait Ranches retains the right to one flush or IVF procedure guaranteeing a minimum of six (6) freezable embryos.



LOT 1A



**SR PARAMOUNT 30/H4**  
FULL BROTHER TO LOT 1



**SR LUMBRE 30/K2**



20221030 • 30/K2 • 2/24/2022 • Polled • Bull Calf At Side

RED DOC DIABLO 6306	KR 189/11	Bal Idx 3%
	RED DOC 3167	
<b>RED DOC ET LUMBRE 8509</b> 20188237	RDF LAURELES149/03	C/C Idx 10%
RED DOC ET 6332	RDF 3-4	
SR PARADIGM 135/7	KR CATALYST 531/15	Term Idx 4%
	P H WELDER 7/342	
<b>SR MS PARADIGM 30/H7</b> 20200735	MR WINROCK N127	
SR ARKOMA 30/0	PERNER D 931	

	BW	WW	YW	MILK	TM	SC	HCW	REA	MARB	FT
EPDs	-1.6	16	20	-7	5	0.43	7	0.11	0.24	-0.01
Acc	.16	.16	.14	.07	--	.05	.06	.13	.18	.19
%Rank	3%	20%	20%	>95%	65%	35%	10%	20%	10%	20%

SR Lumbre 30/K2 is what we were hoping for when we bred Red Doc ET Lumbre 8509 to SR MS Paradigm 30/H7. We used the Lumbre bull extensively as we had tremendous luck with the Red Doc Diablo bloodline. 30/K2 has 10 EPDs that rank in the top 35%.

Strait Ranches will retain a 25% semen interest for "in herd" use only.







LOT 2



**HEFTE RANCH H111**

20202574 • H111 • 3/19/2020 • Polled • Open Cow



RED DOC 3162	RDF QUIEN SABE 0120	Bal Idx 25%
	RDF 5-27	
<b>HEFTE RANCH F82</b> 20176895	AJH 126/0	C/C Idx 30%
HEFTE RANCH B107	BELLATRIX X19	
HARCO 1323	HARCO T956 (ET) T956	Term Idx 25%
	HARCO T720 (ET) T720	
<b>HEFTE RANCH D15</b> 20155807	SJ JESTER 911	
HEFTE RANCH B120	HEFTE 757	

	BW	WW	YW	MILK	TM	SC	HCW	REA	MARB	FT
EPDs	-0.2	7	6	1	8	0.22	-5	-0.03	0.12	0.01
Acc	.14	.34	.22	.14	--	.05	.10	.21	.34	.38
%Rank	40%	50%	50%	40%	45%	95%	50%	50%	10%	90%

*This female was intentionally held open*

A gentle, deep-bodied Hefte Ranch F82 daughter out of Hefte Ranch D15, a Harco 1323 daughter. Take a look at the awesome calf she has produced during the worst of summers! This is the performance we love to see in a first calf heifer. She produced a home run with her first calf and we can't wait to see her future production. She sells open and ready to breed to the bull of your choice.

**Hefte Ranch retains the right to one flush or IVF procedure guaranteeing a minimum of six (6) freezable embryos.**



LOT 2A



**HEFTE RANCH K126**

20220796 • K126 • 5/13/2022 • Polled • Bull Calf at side



KR 191/13	KR 97/10	Bal Idx 20%
	KR 517/04 1A	
<b>HEFTE RANCH H175 ET</b> 20203260	RPV 7/0 RPV7/0	C/C Idx 30%
HEFTE RANCH A43	LIZZY 54/06	
HEFTE RANCH F82	RED DOC 3162	Term Idx 15%
	HEFTE RANCH B107	
<b>HEFTE RANCH H111</b> 20202574	HARCO 1323	
HEFTE RANCH D15	HEFTE RANCH B120	

	BW	WW	YW	MILK	TM	SC	HCW	REA	MARB	FT
EPDs	0.2	12	17	-4	6	0.38	1	0.07	0.20	0.00
Acc	.08	.14	.12	.08	--	.05	.05	.11	.17	.18
%Rank	65%	35%	30%	90%	60%	50%	30%	30%	10%	60%

This May calf is all bull and has been a standout since birth. We will be retaining a half interest in this phenomenal bull calf who is the first calf produced by Hefte Ranch H175 ET, our young herd sire trait leader that combines KR 191/13 and Dunlap Harper genetics. Buyer has the option to keep this calf on our gain test and consign to next year's sale if desired.

**Hefte Ranch retains 1/2 interest in this bull calf.**







LOT 3



**SR 43/20**



20200313 • 43/20 • 3/3/2020 • Polled • Pair

36/3	JHL JOSEPH 049	Bal Idx 3%
RED DOC 101 PROOF ET 6101	HINNANT-FULBRIGHT 9/153	
20164152	RED DOC MULTIPLE SIRE MS	C/C Idx 10%
RDF 9375	RED DOC MULTIPLE DAM MD	
KR CATALYST 531/15	KR 225/10	Term Idx 2%
SR 41/18	KR 310/12 2YO	
20180859	LJV MASON 0/72	
SR 20/5	SR 611	

	BW	WW	YW	MILK	TM	SC	HCW	REA	MARB	FT
EPDs	-0.3	19	24	-7	6	0.52	6	0.16	0.25	0.01
Acc	.15	.19	.12	.11	--	.05	.06	.13	.18	.19
%Rank	35%	10%	10%	95%	60%	10%	10%	5%	2%	90%

NS to Urbanosky 035 (20207215) 6/1/2022-7/12/2022, SR 87/7 (20171842) 7/12/2022-9/27/2022.

SR 43/20 is one of our favorites on the ranch. We IVF'ed her as a yearling to Harris 190E and have an excellent ET heifer calf out of her. SR 43/20 is sired by the Red Doc 101 Proof bull and out of the SR 611 cow line. She is a maternal sib to the SR Jack 41/H2 bull that King Ranch purchased last year. 43/20's donor dam, SR 41/18, has a 391 day average calving interval after 3 calves. With 9 traits ranking in the Top 35% and all index values in the Top 10% or better, we believe 43/20 could also be a donor in your program.

Strait Ranches retains the right to one flush or IVF procedure guaranteeing a minimum of six (6) freezable embryos.



LOT 3A



**SR MS 9386 611/K4**



20221164 • 611/K4 • 6/2/2022 • Polled • Heifer Calf At Side

KR 1131/13	BOND 007/RSR 007	Bal Idx 10%
WENDT 9386	KR 704R/10 704/10 F1	
20203887	WENDT 7818	C/C Idx 10%
WENDT 788	WENDT 9762	
RED DOC 101 PROOF ET 6101	36/3	Term Idx 10%
SR 43/20	RDF 9375	
20200313	KR CATALYST 531/15	
SR 41/18	SR 20/5	

	BW	WW	YW	MILK	TM	SC	HCW	REA	MARB	FT
EPDs	-0.4	11	27	-2	7	0.56	9	0.15	0.13	0.00
Acc	.08	.12	.08	.07	--	.04	.03	.07	.11	.12
%Rank	45%	35%	10%	70%	50%	10%	10%	10%	20%	60%

SR MS 9386 611/K4 has a lot of style and performance. She is sired by the Wendt 9386 bull that Dad purchased from Wendt Ranch Partners last summer. This is an opportunity to acquire outcross genetics backed by one of the strongest maternal lines on Strait Ranches. 611/K4 has 8 EPDs that rank in the Top 35%.

Strait Ranches retains the right to one flush or IVF procedure guaranteeing a minimum of six (6) freezable embryos.



SR JACK 41/H2  
MATERNAL SIB TO LOT 3







LOT 4



**HEFTE RANCH H99**



20202592 • H99 • 2/5/2020 • Scurred • Open Cow

KR 97/10	RDF 8052	Bal Idx 15%
KR 191/13	KR N2/5 4A	
20131196	FIVE OAKS 29/0	C/C Idx 10%
KR 517/04 1A	KR 70/0	
HARCO 1323	HARCO T956 (ET) T956	Term Idx 20%
HEFTE RANCH E09	HARCO T720 (ET) T720	
20166509	RED DOC TOP SHELF 1342	
HEFTE RANCH C09	PG RIC MOM 6014 (ET) 6014	

	BW	WW	YW	MILK	TM	SC	HCW	REA	MARB	FT
EPDs	-0.1	12	21	-1	9	0.29	9	0.20	-0.02	0.03
Acc	.21	.35	.27	.19	--	.12	.13	.25	.36	.38
%Rank	40%	30%	15%	65%	40%	75%	4%	3%	45%	>95%

*This female was intentionally held open*

This is a KR 191/13 daughter that goes back to one of our strong maternal lines, Hefte Ranch C09, a female that continues to produce awesome bulls and replacement heifers for our herd. H99's impressive lineage is reflected in her notable fertility EPDs, placing her in the top 20% for both Heifer Preg and BredBack. Take a look at what she produced in her first calf.



**HEFTE EL PRIMERO H04**  
SIRE OF LOT 4A



LOT 4A



**HEFTE RANCH K82**



20220794 • K82 • 2/12/2022 • Polled • Heifer calf at side

HEFTE RANCH F14 TOMCAT	KR 921/15	Bal Idx 10%
HEFTE EL PRIMERO H04	HEFTE RANCH D140ET	
20197596	AJH 126/0	C/C Idx 15%
HEFTE RANCH F124	HEFTE RANCH Z60	
KR 191/13	KR 97/10	Term Idx 10%
HEFTE RANCH H99	KR 517/04 1A	
20202592	HARCO 1323	
HEFTE RANCH E09	HEFTE RANCH C09	

	BW	WW	YW	MILK	TM	SC	HCW	REA	MARB	FT
EPDs	-0.5	18	22	0	13	0.25	8	0.18	0.16	0.01
Acc	.25	.17	.13	.08	--	.04	.05	.11	.16	.17
%Rank	40%	15%	20%	45%	15%	95%	10%	10%	15%	85%

This fancy, polled heifer is a daughter of Hefte El Primero H04, last year's high selling bull, owned by Five J's Beef & Cattle and ST Genetics. She has an amazing EPD profile with 8 traits ranking in the top 35% or better. She ranks in the top 15% or better on all three indices.







LOT 5



**SR 50/19**



20190184 • 50/19 • 3/19/2019 • Polled • Pair

SR T41 20171844	KR 97/10	RDF 8052 KR N2/5 4A	Bal Idx 15%
	SR 837	SR 444 SR 613 SR 710 LJV DOLLY 8/48	C/C Idx 45%
SR 9/7 20170993	LJV MASON 0/72	LR CODE RED 45/353 SR 613	Term Idx 5%
	SR 6/0		

	BW	WW	YW	MILK	TM	SC	HCW	REA	MARB	FT
EPDs	-3.1	6	7	-5	2	0.27	5	0.19	0.15	0.01
Acc	.29	.31	.22	.23	--	.07	.11	.20	.31	.34
%Rank	1%	55%	50%	90%	85%	85%	10%	4%	10%	90%

AI to FC Savage 25/4 ET (20145451) 5/18/2022. NS to Urbanosky 035 (20207215) 6/1/2022-7/12/2022, SR 87/7 (20171842) 7/12/2022-9/27/2022.

SR 50/19 is sired by SR T41, a KR 97/10 son out of the SR 837 donor cow, and out of SR 9/7. SR 9/7, a LJV Mason 0/72 daughter, is a member of the SR 613 cow family and a never miss producer at Strait Ranches. SR 9/7 has a 372 day average calving interval after 4 calves, while 50/19 has a 345 day calving interval after 2 calves. This female has impressive carcass EPDs with a Top 4% REA EPD and Top 10% CW & MB EPDs.

Strait Ranches retains the right to one flush or IVF procedure guaranteeing a minimum of six (6) freezable embryos.



LOT 5A



**SR MS GRAND CANYON 613/K4**



20221168 • 613/K4 • 3/19/2022 • Polled • Heifer Calf At Side

HARRIS 257/4 20145305	AJH 126/0	CHAPS 372 DOUBLE E 8T39	Bal Idx 25%
	HARRIS FARMS 037/2	QT SHERMAN TANK (ET) 03/4 HARWELL 20	C/C Idx 55%
SR 50/19 20190184	SR T41	KR 97/10 SR 837	Term Idx 10%
	SR 9/7	LJV MASON 0/72 SR 6/0	

	BW	WW	YW	MILK	TM	SC	HCW	REA	MARB	FT
EPDs	-1.7	8	9	-3	4	0.33	1	0.14	0.26	0.01
Acc	.19	.20	.15	.13	--	.06	.07	.14	.18	.19
%Rank	2%	50%	50%	80%	75%	70%	30%	15%	5%	85%

SR MS Grand Canyon 613/K4 is sired by the popular Harris 257 "Cherokee Grand Canyon" AI Sire. The SR 613 cow line has crossed very well with the Harris 257 bull. 613/K4 has excellent carcass EPDs with a Top 5% MB EPD and Top 15% REA EPD.

Strait Ranches retains the right to one flush or IVF procedure guaranteeing a minimum of six (6) freezable embryos.



### LOT 6 - HEFTE RANCH H112

H112 is calving later than her contemporaries, but by no fault of her own. She was unfortunately with a group of cows that were serviced by an infertile bull. When we realized our mistake, we placed her with Hefte Ranch F14 Tomcat to produce an early fall calf and she bred right away. Her buyer will benefit from her added maturity. Sired by Hefte Ranch F82 and out of Hefte Ranch D141 ET, a cow that goes back to our Dunlap Harper maternal line. D141 has a 374 day calving interval and a 106 MPPA with 5 calves produced. Information on her F14 calf at side will be provided at the sale.



LOT 6



### HEFTE RANCH H112

20202498 • H112 • 3/4/2020 • Polled • Pair



RED DOC 3162	RDF QUIEN SABE 0120	Bal Idx 55%
	RDF 5-27	
<b>HEFTE RANCH F82</b>		C/C Idx 65%
20176895	AJH 126/0	
HEFTE RANCH B107	BELLATRIX X19	Term Idx 45%
	FIVE OAKS 74	
RPV 7/0 RPV7/0	RPV 60/4	
<b>HEFTE RANCH D141ET</b>		
20157776	DUNLAP HARPER 74/08	
LIZZY 54/06	LIZ 07/02	

	BW	WW	YW	MILK	TM	SC	HCW	REA	MARB	FT
EPDs	0.2	2	0	-2	3	0.3	-9	-0.09	0.22	-0.01
Acc	.17	.31	.20	.14	--	.04	.09	.18	.30	.33
%Rank	65%	75%	80%	70%	80%	80%	90%	90%	10%	20%

Hefte Ranch retains the right to one flush or IVF procedure guaranteeing a minimum of six (6) freezable embryos.



### HEFTE RANCH H110

20202594 • H110 • 3/7/2020 • Polled • Pair

RED DOC 3162	RDF QUIEN SABE 0120	Bal Idx 65%
	RDF 5-27	
<b>HEFTE RANCH F82</b>		C/C Idx 60%
20176895	AJH 126/0	
HEFTE RANCH B107	BELLATRIX X19	Term Idx 65%
	FIVE OAKS 74	
RPV 7/0 RPV7/0	RPV 60/4	
<b>HEFTE RANCH D136ET</b>		
20156120	DUNLAP HARPER 74/08	
LIZZY 54/06	LIZ 07/02	

	BW	WW	YW	MILK	TM	SC	HCW	REA	MARB	FT
EPDs	-0.7	0	-10	-3	1	0.29	-13	-0.15	0.15	-0.01
Acc	.15	.33	.22	.14	--	.04	.10	.19	.33	.36
%Rank	30%	80%	95%	80%	90%	85%	>95%	>95%	15%	20%

### LOT 7 - HEFTE RANCH H110

Same scenario as her half sister, H110 is calving late by no fault of her own. She is sired by Hefte Ranch F82 and out of Hefte Ranch D136 ET. Her very productive dam, D136 maintains a 387 day calving interval with 5 calves produced. The calf at side is sired by Hefte Ranch F14 Tomcat.



LOT 7







LOT 8 & 8A



**SR 54/19**

20190176 • 54/19 • 3/21/2019 • Polled • Pair



**SR 38/19 820/K3**

20221102 • 820/K3 • 5/2/2022 • Horned • Bull Calf At Side



SR T22 (ET)	RDF SANCHO'S NEVER BEFORE 1136 P H WELDER 7/342	Bal Idx 75%
SR 13/6 20161102	AL ZEUS 213 WELDER 6/268 SR 710 LJV MASON 0/72	C/C Idx 90%
SR 90/1	LJV DOLLY 8/48	Term Idx 55%
SR 75/5 20154748	LIBERTY RANCH 53/414 W H CREEL 426	

SR 27/6	LJV MASON 0/72 SR ARKOMA 30/0	Bal Idx 60%
SR 38/19 20190191	AL ZEUS 213 P H WELDER 2/147 SR T22 (ET) SR 90/1	C/C Idx 55%
SR 17/4		Term Idx 60%
SR 13/6		
SR 54/19 20190176	LJV MASON 0/72 CREEL 820	

	BW	WW	YW	MILK	TM	SC	HCW	REA	MARB	FT
EPDs	0.2	4	7	-6	0	0.41	-6	0.00	-0.11	-0.02
Acc	.11	.32	.17	.22	--	.04	.09	.16	.27	.30
%Rank	55%	65%	50%	95%	90%	25%	55%	40%	85%	10%

	BW	WW	YW	MILK	TM	SC	HCW	REA	MARB	FT
EPDs	-0.5	5	6	-4	2	0.47	-4	0.03	-0.08	-0.01
Acc	.06	.13	.08	.09	--	.03	.04	.07	.11	.11
%Rank	40%	60%	60%	90%	85%	25%	55%	40%	85%	20%

AI to Heft Ranch D25 (20160227) 6/15/2022. NS to Wendt 9386 (20203887) 6/25/22-7/12/22, SR 87/7 (20171842) 7/12/2022-9/27/2022.

SR 54/19 is the daughter of SR 13/6 "Red Rhino" bull and out of a LJV Mason 0/72 daughter in the Creel 820 cow family. 54/19's dam, 75/5, is a stand out in the pastures at Strait Ranches. We have retained 54/19's first heifer calf, 820/J2, that scanned a 6.18% IMF as a yearling.

We are excited to watch this young calf grow as he combines power genetics on both sides of the pedigree including SR 90/1, Creel 820, and Welder 2/147.



SR 38/19  
SIRE OF LOT 8A





LOT 9A



**HEFTE RANCH H159**

20202534 • H159 • 4/11/2020 • Polled • Open Cow



**HEFTE RANCH F42**

20175391  
KR 482/15  
KR 517/04 1A  
HARRIS 8/5

**CA 020**

20175440  
CA 906

KR 781/13  
KR 34/08 1A  
FIVE OAKS 29/0  
KR 70/0  
FC PISTOL 28/0  
NAVIDAD RANCH NR607  
DB 12/17  
4/11

**Bal Idx**  
10%

**C/C Idx**  
20%

**Term Idx**  
4%

	BW	WW	YW	MILK	TM	SC	HCW	REA	MARB	FT
EPDs	0.2	11	25	1	11	0.36	7	0.12	0.23	-0.01
Acc	.27	.29	.15	.09	--	.04	.07	.13	.22	.25
%Rank	55%	35%	10%	40%	25%	45%	10%	10%	3%	25%

*This female was intentionally held open*

A young cow with awesome performance, strong EPDs and a fancy heifer calf by her side. Don't be too hard on this female for her condition. She raised her first calf in the hottest, driest South Texas summer on record, and we were a little late bringing her to the sale pen. H159 is out of a Corpporon Acres cow and Hefte Ranch F42, maternal half sib to KR 191/13. She scanned a 5.3%IMF with only .16 BF and had a 1.18 REA/cwt. H159 was held open and sells ready to breed to the bull of your choice.



**HEFTE RANCH K80**

20220792 • K80 • 2/9/2022 • Polled • Heifer calf at side



**HEFTE EL PRIMERO H04**

20197596  
HEFTE RANCH F14 TOMCAT  
HEFTE RANCH F124  
HEFTE RANCH F42

**HEFTE RANCH H159**

20202534  
CA 020

KR 921/15  
HEFTE RANCH D140ET  
AJH 126/0  
HEFTE RANCH Z60  
KR 482/15  
KR 517/04 1A  
HARRIS 8/5  
CA 906

**Bal Idx**  
10%

**C/C Idx**  
15%

**Term Idx**  
4%

	BW	WW	YW	MILK	TM	SC	HCW	REA	MARB	FT
EPDs	-0.8	16	22	1	13	0.28	7	0.14	0.28	0.00
Acc	.26	.16	.10	.05	--	.03	.04	.08	.13	.14
%Rank	25%	20%	20%	35%	15%	85%	10%	15%	4%	60%

Another Hefte El Primero H04 daughter with a clean, fancy look and a strong set of EPDs. This heifer combines genetics from two high marbling individuals, we can't wait to see her performance numbers.



HEFTE EL PRIMERO H04  
SIRE OF LOT 9A







LOT 10



**SR 76/6**



20164739 • 76/6 • 4/7/2016 • Polled • Pair

SR 710	WR CHALLENGER L230	Bal Idx 15%
	RBC MISS PARTNER 390	
<b>LJV MASON 0/72</b> 1290709	LJV VAQUERO 4/22	C/C Idx 25%
LJV DOLLY 8/48	SR 549	
BRIGGS 516/5	BRIGGS 088/95	Term Idx 15%
	CVF M/6204	
<b>BRIGGS 032/12</b> 201201001527	CB 8333	
BRIGGS 062/5	BRIGGS 008/99	

	BW	WW	YW	MILK	TM	SC	HCW	REA	MARB	FT
EPDs	1.8	20	27	-2	12	0.61	1	0.12	0.08	-0.01
Acc	.38	.51	.35	.42	--	.20	.30	.33	.48	.51
%Rank	95%	10%	10%	75%	20%	3%	20%	10%	15%	25%

AI to SR Marksman 33/19 (20190165) 4/18/2022. NS to QVF Red Rock 82H11 (20200393) 5/3/2022-7/7/2022, SR 38/19 (20190191) 7/7/2022-7/12/2022, SR 87/7 (20171842) 7/12/2022-9/27/2022.

SR 76/6 is daughter of the LJV Mason 0/72 bull that truly transformed our herd. Her dam Briggs 032/12 had a 351 day average calving interval after 6 calves. SR 76/6 has a 353 day average calving interval after 5 calves. SR 76/6 is also the dam of SR The Forgotten One of Catalyst that is owned by Stroman and Pitchford. With 9 EPDs ranking in the top 25%, SR 76/6 can be used to accomplish a variety of goals.



LOT 10A



**SR 190E 032/K**



20220980 • 032/K • 3/2/2022 • Polled • Bull Calf At Side

KR 921/15	KR 800/11	Bal Idx 5%
	KR 110N/09 110/09 N6	
<b>HARRIS FARMS 190E</b> 20173826	HARCO T956 (ET) T956	C/C Idx 10%
HARRIS FARMS 1524	HARCO T190/5 (ET) T190/5	
LJV MASON 0/72	SR 710	Term Idx 5%
	LJV DOLLY 8/48	
<b>SR 76/6</b> 20164739	BRIGGS 516/5	
BRIGGS 032/12	BRIGGS 062/5	

	BW	WW	YW	MILK	TM	SC	HCW	REA	MARB	FT
EPDs	1.2	26	28	4	21	0.48	5	0.12	0.29	-0.01
Acc	.17	.22	.18	.12	--	.10	.08	.17	.22	.22
%Rank	95%	4%	10%	10%	1%	25%	15%	15%	4%	20%

SR 190E 032/K is sired by the trait leading Harris Farms 190E. With 10 EPDs ranking in the Top 25%, he should certainly be considered as a strong option for a future herd sire.



SR THE FORGOTTEN ONE OF CATALYST 66/19  
SON OF LOT 10







LOT 11



**SR 29/18**

20180850 • 29/18 • 2/17/2018 • Horned • Pair



KR 225/10	KR 230/08	Bal Idx 5%
KR CATALYST 531/15 20153484	KR 328/5 (ET) 328/5 F2	
KR 310/12 2YO	KR 56/10	C/C Idx 3%
SR 538	KR 15/09 F1	
SR 869 1279356	POLLED RIDER 233	Term Idx 20%
MISS DOUBLE TT 230	SR HOLLY 033	
	MR DOUBLE TT CROOK HORN 106	
	MISS TT BANKER 16	

	BW	WW	YW	MILK	TM	SC	HCW	REA	MARB	FT
EPDs	0.8	13	13	-9	1	0.41	-6	-0.03	0.22	0.01
Acc	.36	.49	.35	.39	--	.18	.28	.32	.46	.49
%Rank	80%	25%	30%	>95%	90%	25%	55%	50%	3%	90%

AI to Harris Guns Up 216/5 (20152716) 4/18/2022 3/4 SG 1/4 RA. NS to QVF Red Rock 82H1 (20200393) 5/3/2022-7/7/2022, SR 38/19 (20190191) 7/7/2022-7/12/2022, SR 87/7 (20171842) 7/12/2022-9/27/2022.

SR 29/18 is a KR Catalyst daughter out of a powerful cow, SR 869, who had a 371 day average calving interval after 9 calves. 29/18 has a 360 day average calving interval after 3 calves and combines the genetics of KR Catalyst, Polled Rider 233, SR Holly 033 and Double TT Ranch. A 29/18 son, 869/J2, can also be found in this sale.



**SR 27/6 869/K**

20221107 • 869/K • 2/13/2022 • Horned • Bull Calf At Side



LJV MASON 0/72	SR 710	Bal Idx 10%
SR 27/6 20164694	LJV DOLLY 8/48	
SR ARKOMA 30/0	MR WINROCK N127	C/C Idx 4%
KR CATALYST 531/15	PERNER D 931	
SR 29/18 20180850	KR 225/10	Term Idx 20%
SR 869	KR 310/12 2YO	
	SR 538	
	MISS DOUBLE TT 230	

	BW	WW	YW	MILK	TM	SC	HCW	REA	MARB	FT
EPDs	-0.7	11	16	-4	5	0.58	2	0.08	0.11	0.01
Acc	.14	.22	.17	.14	--	.08	.08	.16	.20	.21
%Rank	30%	35%	30%	90%	65%	10%	25%	25%	20%	85%

SR 27/6 869/K is a bull calf visitors consistently ask about when driving through the sale cattle. He is sired by SR 27/6, a full brother to SR Genesis 75/3. With 9 EPDs ranking in the Top 35%, 869/K presents a balanced EPD profile.





### LOT 12 - HEFTE RANCH J108 ET

We struggled with letting this fancy ET daughter of QVF 5369G4 and KR 191/13 go. She has donor cow written all over her. In addition to top 2% Marb, she has excellent EPDs across the board, with 9 traits in the top 25% of better. The quality and consistency runs deep in this cross, as you can see from her ET bull siblings that are consigned to this sale. She sells safe in calf to QVF Jackpot 5369G8. The expected calf will be line bred 5369 genetics and should have exceptional marbling EPDs.



LOT 12

## 12

### HEFTE RANCH J108 ET

20212109 • J108 • 3/9/2021 • Polled • Spring Bred Heifer

<p>KR 97/10</p> <p><b>KR 191/13</b> 20131196</p> <p>KR 517/04 1A</p> <p>SR GENESIS 75/3</p> <p><b>QVF MS 75/3 5369G4</b> 20190586</p> <p>RED DOC 5369</p>	<p>RDF 8052 KR N2/5 4A</p> <p>FIVE OAKS 29/0 KR 70/0</p> <p>LJV MASON 0/72 SR ARKOMA 30/0</p> <p>36/3 RDF 0035</p>	<p><b>Bal Idx</b> 2%</p> <p><b>C/C Idx</b> 10%</p> <p><b>Term Idx</b> 2%</p>
---	--	--

	BW	WW	YW	MILK	TM	SC	HCW	REA	MARB	FT
EPDs	-0.9	.15	.26	-10	2	0.39	10	0.18	0.38	-0.01
Acc	.20	.24	.22	.17	--	.13	.10	.22	.25	.26
%Rank	20%	25%	15%	>95%	85%	45%	5%	10%	2%	20%

AI 05/01/2022 to QVF Jackpot 5369G8 (20193317).

Hefte Ranch retains the right to one flush or IVF procedure guaranteeing a minimum of six (6) freezable embryos.

### LOT 13 - HEFTE RANCH J60

This heifer is one of our favorites. Out of first calf heifer, Hefte Ranch G63, a KR 729/16 daughter and sired by Hefte Ranch F39. Super gentle, deep-bodied, smooth polled, this heifer scanned over a 5%IMF with only .2 backfat. Take a look at her incredible EPDs - all 12 traits are ranked at 40% or better! She sells safe in calf to Hefte Ranch F14 Tomcat.



LOT 13

## 13

### HEFTE RANCH J60

20212247 • J60 • 2/10/2021 • Polled • Spring Bred Heifer

<p>RED DOC 3162</p> <p><b>HEFTE RANCH F39</b> 20175288</p> <p>HEFTE RANCH A08</p> <p>KR729/16</p> <p><b>HEFTE RANCH G63</b> 20191118</p> <p>HEFTE RANCH E16</p>	<p>RDF QUIEN SABE 0120 RDF 5-27</p> <p>LMR DANDY 024 HEFTE W03 KR 380/14 KR 113/13 YR</p> <p>RED DOC TOP SHELF 1342 HEFTE RANCH B07</p>	<p><b>Bal Idx</b> 10%</p> <p><b>C/C Idx</b> 10%</p> <p><b>Term Idx</b> 15%</p>
---	---	--

	BW	WW	YW	MILK	TM	SC	HCW	REA	MARB	FT
EPDs	-1.0	.14	.12	3	14	0.49	3	0.09	0.09	-0.01
Acc	.30	.31	.13	.08	--	.04	.07	.12	.15	.16
%Rank	15%	25%	40%	15%	10%	25%	20%	25%	25%	20%

PE to Hefte Ranch F14 Tomcat (20175282) 05/02/22 to 07/15/22.



### LOT 14 - HEFTE RANCH J03

KR 191/13 is a Proven Sire Trait Leader for both fertility traits, Heifer Pregnancy and Breed Back. Here is another gentle, stylish, dark red daughter with excellent EPDs and indices. Her dam, Hefte Ranch D109 has a perfect 365 day calving interval with 5 calves produced. Based on ultrasound pregnancy testing, we believe she took to AI with heifer-sexed Hefte Ranch F19 Pure Swagger semen, however, she was cleaned up by Hefte Ranch F14 Tomcat. With either mating, the calf should be phenomenal.



LOT 14

14

### HEFTE RANCH J03

GGP

20212156 • J03 • 1/23/2021 • Polled • Spring Bred Heifer

KR 97/10	RDF 8052	Bal Idx 10%
	KR N2/5 4A	
KR 191/13 20131196	FIVE OAKS 29/0	C/C Idx 10%
KR 517/04 1A	KR 70/0	
ROSE HILL SAM HOUSTON 831	DF PLAYBOY 281	Term Idx 10%
	C/A 314	
HEFTE RANCH D109 20157784	SJ 5/D10 (ET) 5/D10	
HEFTE RANCH 875	HEFTE RANCH 637	

	BW	WW	YW	MILK	TM	SC	HCW	REA	MARB	FT
EPDs	0.4	21	33	-5	9	0.41	14	0.26	0.06	0.01
Acc	.17	.36	.25	.22	--	.11	.13	.25	.36	.39
%Rank	75%	10%	5%	95%	35%	40%	2%	2%	30%	85%

AI 05/01/2022 to Hefte Ranch F19 Pure Swagger female sexed semen (20176891). PE to Hefte Ranch F14 Tomcat (20175282) 05/02/22 to 07/15/22.

15

### HEFTE RANCH J46

GGP

20207526 • J46 • 11/25/2020 • Scurred • Spring Bred Heifer

KR 97/10	RDF 8052	Bal Idx 20%
	KR N2/5 4A	
KR 191/13 20131196	FIVE OAKS 29/0	C/C Idx 20%
KR 517/04 1A	KR 70/0	
AJH 126/0	CHAPS 372	Term Idx 20%
	DOUBLE E 8T39	
HEFTE RANCH E90 20171259	SJ 5/D10 (ET) 5/D10	
HEFTE W99 HAZEL W99	HEFTE RANCH 734	

	BW	WW	YW	MILK	TM	SC	HCW	REA	MARB	FT
EPDs	0.7	14	23	-6	5	0.3	2	0.10	0.08	0.00
Acc	.17	.34	.26	.19	--	.12	.12	.21	.24	.24
%Rank	85%	25%	15%	>95%	65%	80%	25%	20%	25%	60%

AI 04/29/22 to QVF Jackpot 5369G8 (20193317). PE to Hefte Ranch F14 Tomcat (20175282) 05/02/22 to 07/15/22.

### LOT 15 - HEFTE RANCH J46

We love our KR 191/13 daughters at Hefte Ranch. They are gentle, dark red, fertile dams with the right amount of milk production to maintain condition yet wean big calves. This is a stout one with a 655 lb adjusted weaning weight. She scanned a 5.5%IMF with only .20 backfat. She has an extremely balanced and impressive EPD set. She sells approximately five months safe in calf.



LOT 15



16

**HEFTE RANCH J01**



20207518 • J01 • 11/19/2020 • Horned • Fall Bred Heifer

KR 97/10	RDF 8052	Bal Idx 40%
	KR N2/5 4A	
KR 191/13 20131196	FIVE OAKS 29/0	C/C Idx 35%
KR 517/04 1A	KR 70/0	
	SJ HAWK'S HUMMER 3/H2	Term Idx 45%
SJ TANKER 818	SJ LADY MARIE 655	
HEFTE RANCH A88 20130240	CANYON 70/40	
MANITOU IV 54/07	MANITOU III 820/8	

	BW	WW	YW	MILK	TM	SC	HCW	REA	MARB	FT
EPDs	0.6	12	14	-5	4	0.38	0	0.09	-0.01	0.00
Acc	.18	.26	.21	.22	--	.11	.10	.21	.25	.25
%Rank	80%	35%	35%	95%	75%	50%	35%	25%	50%	60%

AI 01/18/22 to QVF Jackpot 5369G8 (20193317). PE to Hefte Ranch F14 Tomcat (20175282) 05/11/22 to 07/15/22.

This gentle KR 191/13 daughter is out of Hefte Ranch A88, the dam of Hefte Ranch D25. A88, despite being flushed numerous times, maintains a 352 day calving interval with seven natural born calves produced. Normally this is not a heifer we would let go, but we did a flush of this cross and have several full sibs in our herd. Ask Jack Standley about the bull calf produced from his KR 191 X A88 heifer he purchased in 1st year's T&T Sale. These females are fertile and will raise big calves! J01 sells bred to QVF Jackpot with a calf due in late October/early November. The breed's highest marbling EPDs, low birthweight and super fertility all combining in this soon to be born calf.

LOT 16



17

**HEFTE RANCH J39**



20207521 • J39 • 12/18/2020 • Horned • Fall Bred Heifer

KR 97/10	RDF 8052	Bal Idx 20%
	KR N2/5 4A	
KR 191/13 20131196	FIVE OAKS 29/0	C/C Idx 35%
KR 517/04 1A	KR 70/0	
	RDF 8091	Term Idx 15%
RED DOC TOP SHELF 1342	RDF 7-65	
HEFTE RANCH E02 20166502	PG 510-6	
MABEL W40	HEFTE RANCH 555/7	

	BW	WW	YW	MILK	TM	SC	HCW	REA	MARB	FT
EPDs	0.1	15	23	-8	4	0.33	9	0.13	0.04	-0.02
Acc	.17	.36	.27	.21	--	.11	.13	.25	.36	.39
%Rank	60%	25%	15%	>95%	75%	70%	10%	15%	35%	10%

AI 01/22/22 to Hefte Ranch F14 Tomcat (20175282). PE to Hefte Ranch F14 Tomcat (20175282) 05/11/22 to 07/15/22.

A gentle KR 191/13 daughter out of Hefte Ranch E02, a female from our very productive Mabel W40 cow line. E02 has a 378 calving interval with 4 calves on the ground. We think a lot of our Hefte Ranch F14 Tomcat bull, a proven sire trait leader for BW and MARB, and this mating should be phenomenal. J39 is due to calve in early November.

LOT 17



18

**HEFTE RANCH J42**



20207515 • J42 • 11/24/2020 • Horned • Fall Bred Heifer

KR 97/10	RDF 8052	Bal Idx 30%
	KR N2/5 4A	
KR 191/13 20131196	FIVE OAKS 29/0	C/C Idx 35%
KR 517/04 1A	KR 70/0	
	SJ HAWK'S HUMMER 3/H2	Term Idx 35%
SJ JESTER 911	BRIGGS RANCH 008/7	
HEFTE RANCH B120 20134323	HEFTE 372	
HEFTE 757	KENNETH TOM HEFTE 361	

	BW	WW	YW	MILK	TM	SC	HCW	REA	MARB	FT
EPDs	0.2	8	12	-7	1	0.28	-3	0.04	0.07	-0.01
Acc	.16	.36	.26	.23	--	.10	.13	.25	.36	.38
%Rank	65%	50%	40%	>95%	90%	85%	50%	40%	30%	20%

AI 01/15/22 to Hefte Ranch F14 Tomcat (20175282). PE to Hefte Ranch F14 Tomcat (20175282) 05/11/22 to 07/15/22.

Another exceptional KR 191/13 daughter out of Hefte Ranch B120. One of our most consistent cows, B120 maintains a 369 day calving interval with seven calves produced. This is another 191 daughter we specifically mated to our F14 Tomcat bull. We think the calf due in late October will be a home run.

LOT 18





19

**HEFTE KORBAN 226 ET**



20202040 • 226 • 9/11/2020 • Horned • Fall Bred Heifer

KR729/16

20163672

KR 380/14

KR 113/13 YR

RED DOC 3150

RED DOC 7319

20175210

RED DOC 2225

KR 293R/09

KR 568/03 5B

RDF WOMANIZER 0038

KR 249/10 F2

RDF QUIEN SABE 0120

RDF 9020

RED DOC MULTIPLE SIRE MS

RED DOC MULTIPLE DAM MD

Bal Idx

4%

C/C Idx

10%

Term Idx

5%

	BW	WW	YW	MILK	TM	SC	HCW	REA	MARB	FT
EPDs	-2.2	10	11	7	16	0.51	8	0.20	0.22	-0.02
Acc	.18	.20	.20	.09	-	.05	.08	.17	.29	.31
%Rank	1%	40%	45%	2%	10%	20%	10%	5%	10%	10%

PE to QVF Jackpot 5369G8 (20193317) 03/01/22 to 05/28/22.

This stout female is sired by KR 729/16 and out of donor Red Doc 7319.

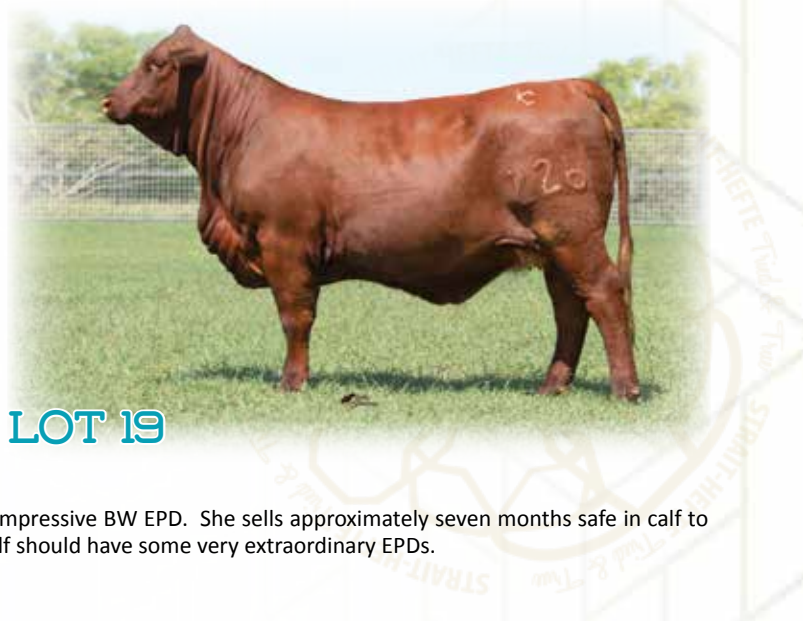
Her EPD profile is exceptional and she ranks in the top 1% for BW and the

top 2% for Milk. It is hard to find a female this powerful who has such an impressive BW EPD.

She sells approximately seven months safe in calf to

QVF Jackpot 5369G8, the breed's highest ranked IMF bull. The resulting calf should have some very extraordinary EPDs.

LOT 19



20

**HEFTE KORBAN 227 ET**



20202041 • 227 • 9/11/2020 • Horned • Fall Bred Heifer

RED DOC 3162

20131002

RDF QUIEN SABE 0120

RDF 5-27

RED DOC 3150

RED DOC 7319

20175210

RED DOC 2225

OIX JORGE 690

RDF 3-4

RDF 2-134

OLIVAREZ RANCHES 1-916

RDF QUIEN SABE 0120

RDF 9020

RED DOC MULTIPLE SIRE MS

RED DOC MULTIPLE DAM MD

Bal Idx

10%

C/C Idx

15%

Term Idx

5%

	BW	WW	YW	MILK	TM	SC	HCW	REA	MARB	FT
EPDs	-2.1	13	6	4	14	0.33	4	0.16	0.32	-0.01
Acc	.20	.21	.22	.13	-	.06	.09	.20	.30	.32
%Rank	1%	30%	60%	10%	10%	70%	20%	10%	3%	20%

PE to QVF Jackpot 5369G8 (20193317) 03/01/22 to 05/28/22.

Another stout female out of the Red Doc 7319 donor cow. This one is

sired by Red Doc 3162. 227 ranks to 1% for BW and top 3% for Marb.

Like her half sib, she also sells approximately seven months safe in calf to

QVF Jackpot 5369G8. Being line bred Red Doc Quien Sabe 0120, the calf

from this mating should have incredible marbling genetics.

LOT 20



21

**HEFTE RANCH J133**



20212095 • J133 • 1/28/2021 • Polled • Spring Bred Heifer

HEFTE RANCH D25

20160227

HARCO 1323

HEFTE RANCH A88

AJH 126/0

HEFTE RANCH E113

20170935

LAURYN'S MISS DIXIE B17

HARCO T956 (ET) T956

HARCO T720 (ET) T720

SJ TANKER 818

MANITOU IV 54/07

CHAPS 372

DOUBLE E 8T39

SJ JESTER 911

SOLOMON'S MISS JULIE 812/11

Bal Idx

25%

C/C Idx

20%

Term Idx

35%

	BW	WW	YW	MILK	TM	SC	HCW	REA	MARB	FT
EPDs	1.3	18	24	2	15	0.3	2	0.10	-0.02	0.01
Acc	.16	.34	.24	.14	-	.08	.11	.23	.34	.36
%Rank	95%	15%	15%	25%	10%	80%	25%	20%	55%	85%

AI 04/16/22 to QVF Jackpot 5369G8 (20193317). PE to Hefte Ranch F14 Tomcat (20175282)

05/11/22 to 07/15/22.

Our Hefte Ranch D25 daughters make great cows. They are fertile pro-

ducers with great udders and they wean big calves. Here is a polled and stout D25 daughter out of an AJH 126/0 daughter. She sells approximately 5

months bred to QVF Jackpot 5369G8, the breed's highest IMF bull.

LOT 21





22

**HEFTE RANCH J63**



20212222 • J63 • 2/10/2021 • Scurred • Spring Bred Heifer

**HEFTE RANCH D25**

20160227 HEFTE RANCH A88  
KR CATALYST 531/15

HARCO T956 (ET) T956  
HARCO T720 (ET) T720  
SJ TANKER 818  
MANITOU IV 54/07  
KR 225/10  
KR 310/12 2YO

Bal Idx  
15%  
C/C Idx  
3%  
Term Idx  
40%

**HEFTE RANCH G40**

20191562 SR 4/5

SR 95/1  
BRIGGS 081/0

	BW	WW	YW	MILK	TM	SC	HCW	REA	MARB	FT
EPDs	0.2	16	19	-3	9	0.49	3	0.14	-0.05	0.03
Acc	.29	.33	.24	.11	--	.08	.10	.22	.33	.35
%Rank	65%	20%	25%	80%	35%	25%	20%	15%	70%	>95%

PE to Hefte Ranch F14 Tomcat (20175282) 05/15/22 to 07/15/22.

A Hefte Ranch D25 daughter with loads of fertility in her pedigree. Her dam is a KR Catalyst daughter with Strait Ranches on the bottom of her pedigree. J63 ranks top 10% for Heifer Preg and top 5% for BreedBack. She sells approximately 5 months safe in calf to Hefte Ranch F14 Tomcat, proven sire trait leader for BW and MARB.

LOT 22



23

**HEFTE RANCH J26**



20212219 • J26 • 1/22/2021 • Polled • Spring Bred Heifer

**HEFTE RANCH F39**

20175288 HEFTE RANCH A08  
HEFTE RANCH D65

RDF QUIEN SABE 0120  
RDF 5-27  
LMR DANDY 024  
HEFTE W03  
AJH 126/0  
HEFTE W24

Bal Idx  
65%  
C/C Idx  
50%  
Term Idx  
70%

**HEFTE RANCH G13**

20187240 CA 12/8

WENDT \*\*ALL STAR 5876\*\* 5876  
DOUBLE E FARMS 130

	BW	WW	YW	MILK	TM	SC	HCW	REA	MARB	FT
EPDs	0.2	1	-5	4	8	0.43	-9	-0.06	0.17	0.00
Acc	.30	.33	.23	.10	--	.04	.10	.20	.33	.36
%Rank	65%	80%	90%	10%	45%	35%	90%	80%	15%	60%

PE to Hefte Ranch F14 Tomcat (20175282) 05/02/22 to 07/15/22.

Out of a first calf heifer, Hefte Ranch G13, a Hefte Ranch D65 daughter and Hefte Ranch F39. This heifer also scanned over a 5%IMF with only .2 backfat. She sells safe in calf to Hefte Ranch F14 Tomcat, proven sire trait leader for BW and MARB.

LOT 23



24

**HEFTE RANCH J145**



20212098 • J145 • 1/26/2021 • Polled • Spring Bred Heifer

**HEFTE RANCH G17**

20187242 HARRIS FARMS 37/8  
BRIGGS 533/11

KR 97/10  
KR 517/04 1A  
HARCO T155/5 (ET) T155/5  
HARRIS FARMS T036/5 (ET) T036/5  
BRIGGS 555/4  
CB 1335

Bal Idx  
25%  
C/C Idx  
30%  
Term Idx  
25%

**LCR 526**

20150553 2S RANCH 5131

HARRIS FARMS 674  
WENDT 8190

	BW	WW	YW	MILK	TM	SC	HCW	REA	MARB	FT
EPDs	-0.2	12	12	1	10	0.38	1	0.10	0.14	0.02
Acc	.12	.32	.20	.15	--	.05	.09	.17	.30	.33
%Rank	50%	35%	40%	35%	30%	50%	30%	20%	15%	95%

AI 04/16/2022 to QVF Jackpot 5369G8 (20193317). PE to Hefte Ranch F14 Tomcat (20175282) 05/02/22 to 07/15/22.

This stout, polled heifer is a daughter of Hefte Ranch G17, a KR 191/13 son out of one of our most fertile cows. J145's dam is LCR 526 who has a calving interval of 377 days with six calves produced, including Hefte Ranch G112, a young sire trait leader purchased by Red Doc Farm at the 2020 T&T Sale. She sells AI'ed to QVF Jackpot and cleaned up with F14 Tomcat. You can't go wrong with either of these matings.

LOT 24





25

**HEFTE RANCH J86**



20212116 • J86 • 2/4/2021 • Polled • Spring Bred Heifer

KR 191/13	KR 97/10	<b>Bal Idx</b> 10%
	KR 517/04 1A	
<b>HEFTE RANCH G18</b>		<b>C/C Idx</b> 15%
20187243	PG 510-6	
HEFTE W24	OLIVAREZ RANCHES 880	<b>Term Idx</b> 10%
	HARCO T956 (ET) T956	
HARCO 1323	HARCO T720 (ET) T720	
<b>HEFTE RANCH D33</b>		
20160934	MR CVF 2022	
BRIGGS 039/5	BRIGGS 046/1	

	BW	WW	YW	MILK	TM	SC	HCW	REA	MARB	FT
EPDs	0.7	16	30	-1	10	0.15	9	0.17	0.15	-0.01
Acc	.12	.35	.23	.16	--	.05	.11	.21	.33	.36
%Rank	85%	20%	10%	60%	30%	>95%	10%	10%	15%	20%

PE to Hefte Ranch F14 Tomcat (20175282) 05/02/22 to 07/15/22.

This heifer is sired by Hefte Ranch G18, a KR 191/13 son and Hefte Ranch D33, a Harco 1323 daughter. D33 has an incredible 351 day calving interval with five calves on the ground. She has also produced some of our highest marbling calves, including Hefte Ranch G64, purchased by 5Js Beef & Cattle in the 2020 T&T Sale. She sells safe in calf to Hefte Ranch F14 Tomcat. The resulting calf will be line bred with CVF 2022 and Harco 1323 genetics.

LOT 25



26

**HEFTE RANCH J75**



20212250 • J75 • 3/3/2021 • Polled • Spring Bred Heifer

KR 191/13	KR 97/10	<b>Bal Idx</b> 55%
	KR 517/04 1A	
<b>HEFTE RANCH G42</b>		<b>C/C Idx</b> 45%
20187272	AJH 126/0	
HEFTE RANCH B18	HEFTE RANCH Z00 BABY Z00	<b>Term Idx</b> 60%
	HARCO 1323	
HEFTE RANCH D25	HEFTE RANCH A88	
<b>HEFTE RANCH G35</b>		
20191469	HF FRED 445/2	
HEFTE RANCH C53	SR T12 (ET)	

	BW	WW	YW	MILK	TM	SC	HCW	REA	MARB	FT
EPDs	1.5	10	10	-2	7	0.44	-7	-0.02	0.11	0.02
Acc	.27	.31	.21	.10	--	.06	.10	.19	.31	.34
%Rank	95%	40%	45%	70%	50%	35%	80%	65%	20%	85%

AI 04/26/22 to QVF Jackpot 5369G8 (20193317). PE to Hefte Ranch F14 Tomcat (20175282) 05/11/22 to 07/15/22.

This stout, yet feminine heifer is the product of some of our newest genetics. Sired by Hefte Ranch G42, a KR 191/13 son, and out of a D25 daughter, Hefte Ranch G35. Top 20% Marb EPD and tons of maternal potential in this female. Her pedigree combines some of our favorite sires. Based on ultrasound pregnancy dating, we believe this heifer is safe in calf to QVF Jackpot 5369G8.

LOT 26



27

**STRAIT HEFTE J103**



20212103 • J103 • 2/14/2021 • Polled • Spring Bred Heifer

KR 921/15	KR 800/11	<b>Bal Idx</b> 25%
	KR 110N/09 110/09 N6	
<b>HEFTE RANCH F14 TOMCAT</b>		<b>C/C Idx</b> 30%
20175282	HARCO 1323	
HEFTE RANCH D140ET	BRIGGS 039/5	<b>Term Idx</b> 25%
	KR 659/06	
RDF LA JOY'S BOY 8183	RDF 6-114	
<b>316</b>		
20162316	RED DOC JORGE 1382	
2/14	RDF 0131	

	BW	WW	YW	MILK	TM	SC	HCW	REA	MARB	FT
EPDs	-1.4	5	10	2	8	0.33	2	0.05	0.11	0.01
Acc	.16	.32	.19	.12	--	.05	.09	.17	.30	.33
%Rank	4%	60%	45%	25%	45%	70%	25%	35%	20%	85%

AI 04/25/22 to QVF Jackpot 5369G8 (20193317).

This moderate, easy-keeping heifer is one of the first F14 Tomcat daughters that we are offering for sale. Her dam, Drake 316 was purchased as a partnership venture at the Rocky Mountain Sale in 2017 and has maintained a 359 day calving interval with 4 live calves produced. J103 sells safe in calf to QVF Jackpot 5369G8. The resulting calf will have some very stacked EPDs.

LOT 27





### LOT 28 - SR MS UNO ET 23/J4

SR MS Uno ET 23/J4 is an own daughter of the GO Uno 806 bull out of National Champion SR Hazel 23/7. Bill Lundberg helped us plan this mating and our friend Dennis Jones allowed us to buy the GO Uno 806 semen early on. This heifer truly combines phenotype and performance. She is the first SR Hazel 23/7 daughter to sell and a full sibling to the SR Ms Uno ET 23/J3 "Little Betty" that is being shown by Arden Strait. Little Betty was Grand Champion female at the Fort Worth, Austin and Rio Grande Valley Junior Shows in 2022 as well as Reserve Grand Champion at the San Antonio Junior Show. 23/J4 currently has 7 EPDs that rank in the Top 30% or better, highlighted by a Top 2% YW and Top 3% WW, CW & REA.



LOT 28



#### SR MS UNO ET 23/J4

20211108 • 23/J4 • 2/1/2021 • Polled • Bred Heifer



#### GO UNO 806

20182233

RED DOC 3382

LJV MASON 0/72

#### SR HAZEL 23/7

20171001

SR 80/2

(O.U.) SUPER STAR 33/5  
FLYING C'S 22/3

KR 189/11

RED DOC MULTIPLE DAM MD

SR 710

LJV DOLLY 8/48

AL ZEUS 213

SR 6/0

Bal Idx  
10%

C/C Idx  
20%

Term Idx  
5%

	BW	WW	YW	MILK	TM	SC	HCW	REA	MARB	FT
EPDs	1.2	27	43	-4	13	0.48	12	0.24	0.05	0.00
Acc	.18	.18	.21	.10	--	.04	.08	.18	.31	.34
%Rank	95%	3%	2%	90%	15%	25%	3%	3%	30%	60%

AI to SR Paramount 30/H4 (20200729) 4/18/2022. NS to Four J Focus 19/243 (20187285) 5/5/22-7/11/22, SR Mpact 2/H4 (20200725) 7/11/22-9/27/22.

Strait Ranches IVF'ed this heifer prior to breeding.



#### SR MS UNO ET 621/J4

20211196 • 621/J4 • 1/24/2021 • Polled • Bred Heifer



#### GO UNO 806

20182233

RED DOC 3382

TARZAN BRIGGS 651D2

#### BRIGGS 621F6

20187378

556/14

(O.U.) SUPER STAR 33/5  
FLYING C'S 22/3

KR 189/11

RED DOC MULTIPLE DAM MD

BRIGGS 052/11

BRIGGS 124/12

BRIGGS 631/5

BRIGGS 609/9

Bal Idx  
10%

C/C Idx  
10%

Term Idx  
10%

	BW	WW	YW	MILK	TM	SC	HCW	REA	MARB	FT
EPDs	0.9	26	39	2	19	0.54	14	0.27	0.01	-0.01
Acc	.14	.18	.22	.09	--	.04	.08	.19	.33	.36
%Rank	90%	4%	3%	25%	2%	15%	2%	2%	45%	20%

AI to SR Paramount 30/H4 (20200729) 4/18/2022. NS to Four J Focus 19/243 (20187285) 5/5/22-7/11/22, SR Mpact 2/H4 (20200725) 7/11/22-9/27/22.

Strait Ranches IVF'ed this heifer prior to breeding.

### LOT 29 - SR MS UNO ET 621/J4

SR MS Uno ET 621/J4 is another GO Uno 806 daughter but out of the Briggs 621F6 donor cow. 621F6 was one of the best cows to roam the pastures at Strait Ranches with an excellent udder and great calves. 621F6 had a 327 day calving interval after 2 calves. We have retained two full sibs to this heifer, but have always though 621/J4 was the most powerful sibling. With 8 traits ranking in the Top 30% including a Top 2% TM, CW & REA EPD and a powerful phenotype, we feel like 621/J4 is really special.



LOT 29



### LOT 30 - SR MS CATALYST 822/H

SR MS Catalyst 822/H is an own daughter of KR Catalyst 531/15 and out of a SR T17 daughter that goes back to Lazy JV genetics. Phenotypically this heifer has always been a standout but her 105% WW Ratio, 109% YW Ratio, 116% IMF Ratio and 104% REA Ratio may catch people's attention. With 8 traits ranking in the Top 40%, 822/H can be bred to a variety of bulls. Her Top 1% MB EPD and top index values truly make 822/H elite.



LOT 30



### SR MS CATALYST 822/H

20207582 • 822/H • 10/26/2020 • Horned • Bred Heifer



KR 225/10  
KR CATALYST 531/15  
20153484

KR 310/12 2YO

SR T17 (ET)

SR 124/6

20167318 LJV 1/81

KR 230/08  
KR 328/5 (ET) 328/5 F2  
KR 56/10  
KR 15/09 F1  
RDF SANCHO'S NEVER BEFORE 1136  
SR HOLLY 033

LJV VAQUERO 4/22  
SR 822

Bal Idx  
10%

C/C Idx  
10%

Term Idx  
10%

	BW	WW	YW	MILK	TM	SC	HCW	REA	MARB	FT
EPDs	0.3	10	19	-8	0	0.57	5	0.12	0.43	0.01
Acc	.17	.36	.26	.20	--	.10	.12	.23	.33	.36
%Rank	70%	40%	25%	>95%	95%	10%	15%	15%	1%	85%

AI to Harris Guns Up 216/5 (20152716) 3/3/2022 3/4 SG 1/4 RA. NS to SR Mpac2 2/H4 (20200725) 3/24/22-7/7/22, Four J Focus 19/243 (20187285) 7/7/22-7/11/22, SR Mpac2 2/H4 (20200725) 7/11/22-9/27/22.



### SR MS CATALYST ET 253/H3

20207553 • 253/H3 • 9/8/2020 • Horned • Bred Heifer



KR 225/10  
KR CATALYST 531/15  
20153484

KR 310/12 2YO

HARRIS GUNS UP 216/5

HARRIS GUNS UP 253F14

20185697 HARCO T607 (ET) T607

KR 230/08  
KR 328/5 (ET) 328/5 F2  
KR 56/10  
KR 15/09 F1  
FC PISTOL 28/0  
HINNANT-FULBRIGHT 9/153

KR RICARDO 182/02  
MISS WINROCK M253

Bal Idx  
1%

C/C Idx  
1%

Term Idx  
3%

	BW	WW	YW	MILK	TM	SC	HCW	REA	MARB	FT
EPDs	-0.4	23	23	-9	6	0.62	5	0.15	0.40	0.02
Acc	.20	.24	.20	.17	--	.11	.09	.19	.23	.24
%Rank	45%	10%	15%	>95%	60%	5%	15%	10%	2%	95%

AI to QVF Red Rock 82H11 (20200393) 3/3/2022. NS to SR Mpac2 2/H4 (20200725) 3/24/22-7/7/22, Four J Focus 19/243 (20187285) 7/7/22-7/11/22, SR Mpac2 2/H4 (20200725) 7/11/22-9/27/22.

### LOT 31 - SR MS CATALYST 253/H3

SR MS Catalyst ET 253/H3 is a Catalyst daughter out of the Harris 253F14 donor cow that Strait Ranches and Hefte Ranch bought half interest in for \$25,000. The 253F14 donor cow has proven to be fertile and productive. Her 6.3% IMF and EPD profile with 8 EPDs ranking in the Top 15% certainly make this female unique. Her full sib brother was recently processed by Cedar Creek Farms in Kentucky and he graded PRIME.



LOT 31





### SR MS 1582 935/H



20207585 • 935/H • 10/18/2020 • Polled • Bred Heifer

KR 482/15	KR 781/13	<b>Bal Idx</b> 20%
	KR 34/08 1A	
<b>KR1582/17</b>	TOP GUN 244	<b>C/C Idx</b> 20%
20175788	KR 15R/07 F1	
KR 574/09 KR574/09 F2	FC PISTOL 28/0	<b>Term Idx</b> 20%
	HARDING 437/2	
CREECH 100-4		
<b>MISS GRANDVIEW 935</b>	CREECH NEVER AGAIN 911-4	
20187186	CREECH MAGNOLIA 101-4	
CREECH 152-6		

	BW	WW	YW	MILK	TM	SC	HCW	REA	MARB	FT
EPDs	0.8	21	29	2	17	0.49	6	0.10	0.01	0.01
Acc	.12	.33	.21	.12	--	.06	.10	.18	.29	.32
%Rank	85%	10%	10%	25%	4%	25%	15%	20%	45%	85%

AI to Harris Guns Up 216/5 (20152716) 3/3/2022 3/4 SG 1/4 RA. NS to SR Mpac2 2/H4 (20200725) 3/24/22-7/7/22, Four J Focus 19/243 (20187285) 7/7/22-7/11/22, SR Mpac2 2/H4 (20200725) 7/11/22-9/27/22.

SR MS 1582 935/H is a daughter of our KR 1582/17 bull and out of a Grandview/Creech female that goes back to Pistol, Harding and Red Doc genetics. 935/H has 8 EPDs ranking in the Top 25% and a Ribeye Area ratio 105% at scan. We think 935/H nicely balances performance and maternal traits.



LOT 32



### SR MS CATALYST 745/J5



20211222 • 745/J5 • 2/13/2021 • Horned • Bred Heifer

KR 225/10	KR 230/08	<b>Bal Idx</b> 10%
	KR 328/5 (ET) 328/5 F2	
<b>KR CATALYST 531/15</b>	KR 56/10	<b>C/C Idx</b> 10%
20153484	KR 15/09 F1	
KR 310/12 2Y0	BRIGGS 564/5	<b>Term Idx</b> 10%
	BRIGGS 522/5	
BRIGGS 504/8		
<b>BRIGGS 745/14</b>	BRIGGS 546/4	
20145219	BRIGGS 506/5	
BRIGGS 660/11		

	BW	WW	YW	MILK	TM	SC	HCW	REA	MARB	FT
EPDs	0.2	2	17	-11	-6	0.68	6	0.22	0.39	0.01
Acc	.16	.37	.29	.21	--	.11	.13	.27	.38	.41
%Rank	65%	75%	30%	>95%	>95%	3%	15%	4%	2%	85%

AI to Harris Guns Up 216/5 (20152716) 4/18/2022 3/4 SG 1/4 RA. NS to Four J Focus 19/243 (20187285) 5/5/22-7/11/22, SR Mpac2 2/H4 (20200725) 7/11/22-9/27/22.

SR MS Catalyst ET 745/J5 is an own daughter of the KR Catalyst 531/15 bull out of the Briggs 745/14 donor cow that we purchased at the Houston International Super Sale a few years ago. The Briggs 745/14 cow did a great job raising 745/J5 and her twin sister. We sold a top selling ET heifer out of 745/14 at the Quail Valley Elite Sale to D&R Farms in Ennis, Texas. I have heard that others are happy with their 745/14 ET calves as well. 745/J5 had a great scan day with an IMF ratio of 116% and Ribeye Area ratio of 111%. Her EPD profile is highlighted by a Top 1% BB, Top 2% MB, Top 3% SC & Top 4% REA EPD.



LOT 33



### SR MS D65 516/J



20211382 • 516/J • 3/1/2021 • Polled • Bred Heifer

AJH 126/0	CHAPS 372	<b>Bal Idx</b> 10%
	DOUBLE E 8T39	
<b>HEFTE RANCH D65</b>	PG 510-6	<b>C/C Idx</b> 3%
20157765	OLIVAREZ RANCHES 880	
HEFTE W24	LJV MASON 0/72	<b>Term Idx</b> 25%
	SR ARKOMA 30/0	
SR 27/6		
<b>SR 5/19</b>	KR 97/10	
20190138	SR 721	
SR 95/5		

	BW	WW	YW	MILK	TM	SC	HCW	REA	MARB	FT
EPDs	-0.3	28	29	-3	15	0.35	8	0.14	-0.09	0.07
Acc	.16	.35	.24	.12	--	.05	.11	.22	.35	.37
%Rank	50%	3%	10%	80%	10%	60%	10%	15%	85%	>95%

AI to Hefte Ranch G70 Final Draft (20191558) 4/18/2022. NS to Four J Focus 19/243 (20187285) 5/30/22-7/11/22, SR Mpac2 2/H4 (20200725) 7/11/22-9/27/22.

SR MS D65 516/J has always been a standout. 516/J is an own daughter of the Hefte D65 bull that sold to Reese Ranch and out of SR 5/19 who is a full sibling to the 516/J3 heifer selling today. 5/19 will likely be a donor cow at Strait Ranches in the future. 516/J's weaning and yearling weight ratios stand out at 129% and 111% respectively. This heifer has a balanced EPD profile with 7 EPDs ranking in the Top 40% as well as strong index values of 10% Balanced, 3% Cow/Calf and 25% Terminal.

Strait Ranches retains the right to one flush or IVF procedure guaranteeing a minimum of six (6) freezable embryos.



LOT 34







**SR MS 68F2 1578/J**



20211092 • 1578/J • 3/19/2021 • Polled • Bred Heifer

**SR 68/F2**

20186389

KR CATALYST 531/15	KR 225/10	Bal Idx 10%
	KR 310/12 2YO	
SR 68/2	RDF MACHO MAN 0088	C/C Idx 10%
	BRIGGS 081/0	
HARRIS 17/4	FC PISTOL 28/0	Term Idx 10%
	NAVIDAD RANCH NR607	
SR 21/19		
20190154	KR 1058/05 (ET) 1058/05	
1578	DS MADISON 8T32/1	

	BW	WW	YW	MILK	TM	SC	HCW	REA	MARB	FT
EPDs	-0.2	16	16	-6	5	0.54	0	0.01	0.26	0.01
Acc	.14	.34	.22	.12	--	.06	.10	.20	.33	.37
%Rank	50%	20%	30%	>95%	65%	15%	35%	50%	5%	85%

AI to SR Mpac 30/F2 (20180821) 5/18/2022. NS to Four J Focus 19/243 (20187285) 5/30/22-7/11/22, SR Mpac 2/H4 (20200725) 7/11/22-9/27/22.

SR MS 68F2 1578/J is an own daughter of the SR 68/F2 bull now owned by Cedar Creek Farms (Jewett Borden and Family) in Kentucky. 68F2 is a maternal sib to the SR 90/4 donor cow owned by Red Doc Farms. 1578/J's dam, 21/19, is a Diamond S bred cow that combines Pistol, Navidad 607, King Ranch, and Top Gun genetics and currently has a 372 day calving interval after 2 calves. 1578 combined an IMF scan ratio of 110% with Backfat scan ratio of 118%. With 7 EPDs ranking in the Top 35% including a Top 5% BB & MB EPD, 1578/J presents an extremely balanced EPD profile. This female maintains excellent indices as well with Top 10% Balanced Index, Cow/Calf Index and Terminal Index.

LOT 35



**SR MS WICKHAM 70/J**



20211211 • 70/J • 3/23/2021 • Polled • Bred Heifer

**SR 87/7**

20171842

KR CATALYST 531/15	KR 225/10	Bal Idx 40%
	KR 310/12 2YO	
CTF QUIEN SABE'S BEAUTY	RED DOC 3150	C/C Idx 20%
	RED DOC 3227	
HEARD'S PLAYBOY 881/5	SHAKER'S PLAYBOY 720	Term Idx 65%
	VAN'S GAZELLE 50	
HCC HATTIE 1451		
20110109	NAF SALUTE 39/3	
HCC 70	POLLED HEREFORD FEMALE	

	BW	WW	YW	MILK	TM	SC	HCW	REA	MARB	FT
EPDs	0.2	6	5	-4	3	0.58	-4	0.03	0.04	0.02
Acc	.11	.32	.19	.11	--	.04	.09	.17	.29	.32
%Rank	65%	55%	65%	90%	80%	10%	55%	40%	35%	95%

AI to SR Paramount 30/H4 (20200729) 5/18/2022. NS to Four J Focus 19/243 (20187285) 5/30/22-7/11/22, SR Mpac 2/H4 (20200725) 7/11/22-9/27/22.

SR MS Wickham 70/J is 7/8 (Purebred) and an own daughter of the SR 87/7 "Wickham" bull that has been an excellent producer for us and has started to catch the eye of other producers due the consistency exhibited in his offspring and his extensive depth of body. 70/J's dam was purchased from Heil Cattle Company when they dispersed.

SR 87/7 WICKHAM  
SIRE OF LOT 36 & 37



Photo taken by Harry Lawson



**SR MS WICKHAM 77/J**



20211224 • 77/J • 2/28/2021 • Polled • Bred Heifer

**SR 87/7**

20171842

KR CATALYST 531/15	KR 225/10	Bal Idx 35%
	KR 310/12 2YO	
CTF QUIEN SABE'S BEAUTY	RED DOC 3150	C/C Idx 15%
	RED DOC 3227	
SHAKER'S WASP B3	SHAKER'S SIERRA 10/4	Term Idx 65%
	2S RANCH 4175	
HCC 77 B3 260/4		
20146576	NAF SALUTE 39/3	
HCC 77	CHAROLAIS	

	BW	WW	YW	MILK	TM	SC	HCW	REA	MARB	FT
EPDs	0.0	5	-1	1	7	0.62	-3	0.12	0.10	0.02
Acc	.13	.32	.19	.12	--	.04	.09	.17	.30	.33
%Rank	60%	60%	80%	35%	50%	5%	50%	15%	20%	95%

AI to Hefte Ranch G70 Final Draft (20191558) 4/18/2022. NS to Four J Focus 19/243 (20187285) 5/5/22-7/11/22, SR Mpac 2/H4 (20200725) 7/11/22-9/27/22.

SR MS Wickham 77/J is a 7/8 (Purebred) female sired by the SR 87/7 "Wickham" bull out of a Shaker Hill and Cherokee bred female that we purchased from Heil Cattle Company. A SR 87/7 daughter topped the 2022 Bluebonnet Classic selling to Cedar Creek Farms in Kentucky. 77/J's Top 15% Ribeye Area EPD and Top 20% Marbling EPD highlight her EPD profile.

LOT 37







### SR MS 27/6 516/J3



20211161 • 516/J3 • 3/13/2021 • Polled • Bred Heifer

SR 27/6  
20164694

LJV MASON 0/72  
SR ARKOMA 30/0  
KR 97/10

SR 710  
LJV DOLLY 8/48  
MR WINROCK N127  
PERNER D 931  
RDF 8052  
KR N2/5 4A

Bal Idx  
15%  
C/C Idx  
10%  
Term Idx  
25%

SR 95/5  
20157842

SR 721

ALEXANDER 156/8  
SR 516

	BW	WW	YW	MILK	TM	SC	HCW	REA	MARB	FT
EPDs	-1.5	13	14	-3	7	0.47	5	0.14	-0.07	0.01
Acc	.15	.36	.25	.16	--	.08	.12	.23	.35	.38
%Rank	3%	30%	35%	80%	50%	25%	15%	15%	80%	85%

AI to Hefte Ranch G70 Final Draft (20191558) 5/18/2022. NS to Four J Focus 19/243 (20187285) 5/30/22-7/11/22, SR Mpcat 2/H4 (20200725) 7/11/22-9/27/22.

SR MS 27/6 516/J3 is sired by 27/6 who is a full sibling to SR Genesis 75/3 and is out of the SR 95/5, a KR 97/10 daughter who has been an excellent producer for us. From a maternal perspective we also like the fact that Alexander 156/8 can be found in this female's pedigree. We have retained a full sister to this lot in SR 5/19 who is the dam of another sale lot, SR 516/J. This heifer had a 106% ratio for Ribeye Area when scanned. 516/J3 has 6 EPDs that rank in the Top 35% as well as a Top 15% Balanced Index, Top 10% Cow/Calf Index and Top 25% Terminal Index.



HEFTE RANCH G70 FINAL DRAFT  
AI SIRE TO LOT 38



### SR MS GENESIS 207/J3



20211099 • 207/J3 • 2/19/2021 • Polled • Bred Heifer

SR GENESIS 75/3  
20132516

LJV MASON 0/72  
SR ARKOMA 30/0  
KR 309/14

SR 710  
LJV DOLLY 8/48  
MR WINROCK N127  
PERNER D 931  
KR 234/12  
KR 842/12 2YO

Bal Idx  
15%  
C/C Idx  
10%  
Term Idx  
25%

KR207/17  
20173036

KR 154/13 YR

HARCO T966 (ET) T966  
KR 198 4A

	BW	WW	YW	MILK	TM	SC	HCW	REA	MARB	FT
EPDs	-0.8	8	11	1	9	0.53	0	0.02	0.15	0.02
Acc	.16	.36	.25	.17	--	.09	.12	.23	.34	.37
%Rank	25%	50%	45%	35%	35%	15%	35%	45%	15%	95%

AI to SR Paramount 30/H4 (20200729) 4/18/2022. NS to Four J Focus 19/243 (20187285) 5/5/22-7/11/22, SR Mpcat 2/H4 (20200725) 7/11/22-9/27/22.

SR MS Genesis 207/J3 is an own daughter of SR Genesis 75/3 out of the KR 207/17 donor cow. Dad and I went to King Ranch and picked the 207/17 cow out of the pasture. We chose to invest in this cow due to her balanced EPD profile, excellent phenotype and strong within herd EPDs. She has not disappointed us. 207/17 has a 362 day average calving interval after 4 calves. Pay close attention to this heifer's IMF ratio of 106% and Backfat ratio of 133%. 207/J3 has 11 EPDs that rank in Top 50% and strong indices as well with all ranking in the Top 25% or better.



LOT 39



### SR MS 27/6 647/J



20211202 • 647/J • 1/6/2021 • Polled • Bred Heifer

SR 27/6  
20164694

LJV MASON 0/72  
SR ARKOMA 30/0  
WELDER 8/751

SR 710  
LJV DOLLY 8/48  
MR WINROCK N127  
PERNER D 931  
P H WELDER 9/413  
WELDER 3/248

Bal Idx  
60%  
C/C Idx  
50%  
Term Idx  
65%

SR 61/3  
20132483

SR 647

SYNERGY 0170  
SR 1/2

	BW	WW	YW	MILK	TM	SC	HCW	REA	MARB	FT
EPDs	-1.9	-7	-3	2	2	0.52	-3	0.00	-0.04	-0.01
Acc	.14	.35	.22	.15	--	.05	.11	.20	.32	.35
%Rank	2%	>95%	85%	25%	85%	15%	50%	55%	65%	20%

AI to Harris Guns Up 216/5 (20152716) 4/18/2022. NS to Four J Focus 19/243 (20187285) 5/5/22-7/11/22, SR Mpcat 2/H4 (20200725) 7/11/22-9/27/22.

SR MS 27/6 647/J is daughter of 27/6, a full brother to SR Genesis 75/3, and out of SR 61/3, a female with Pat Welder and Perry Bass breeding. SR 61/3 had an average calving interval of 349 days after 7 calves. Her dam's fertility is reflective in 647/J's Top 15% Heifer Pregnancy EPD and Top 30% Breed Back EPD.



LOT 40







**SR MS GENESIS 249/J**



20211114 • 249/J • 1/16/2021 • Polled • Bred Heifer

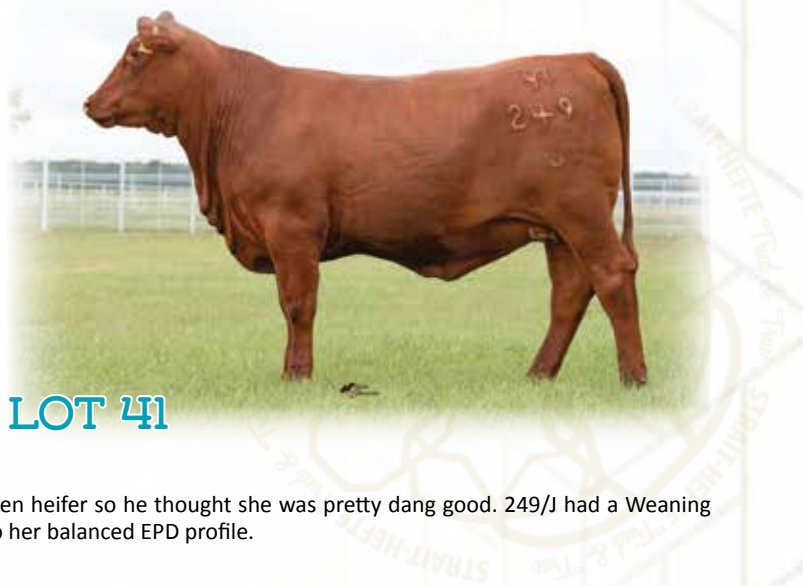
LJV MASON 0/72	SR 710	<b>Bal Idx</b> 20%
	LJV DOLLY 8/48	
<b>SR GENESIS 75/3</b>		<b>C/C Idx</b> 20%
20132516	MR WINROCK N127	
SR ARKOMA 30/0	PERNER D 931	<b>Term Idx</b> 30%
	BRIGGS 607/2	
DB 112/6	BRIGGS 023/1	
<b>DB 249/5</b>		
20152621	UTLEY SS1U	
UTLEY U12/8	UTLEY'S JEANNIE C RILEY U502/2	

	BW	WW	YW	MILK	TM	SC	HCW	REA	MARB	FT
EPDs	-0.6	11	16	-3	6	0.46	-1	-0.04	0.02	0.01
Acc	.21	.36	.23	.20	--	.08	.11	.21	.31	.34
%Rank	35%	35%	30%	80%	60%	30%	40%	70%	40%	85%

AI to Harris Guns Up 216/5 (20152716) 4/18/2022 3/4 SG 1/4 RA. NS to Four J Focus 19/243 (20187285) 5/5/22-7/11/22, SR Mpack 2/H4 (20200725) 7/11/22-9/27/22.

SR MS Genesis 249/J is an excellent Genesis daughter out of our best Corpron/Dos Bros cow, 249/5. My Dad paid over \$7,000 for 249/5 as an open heifer so he thought she was pretty dang good. 249/J had a Weaning Weight ratio of 111% and Yearling Weight ratio of 114% that contributed to her balanced EPD profile.

LOT 41



**SR MS GENESIS 203/H**



20207544 • 203/H • 12/20/2020 • Polled • Bred Heifer

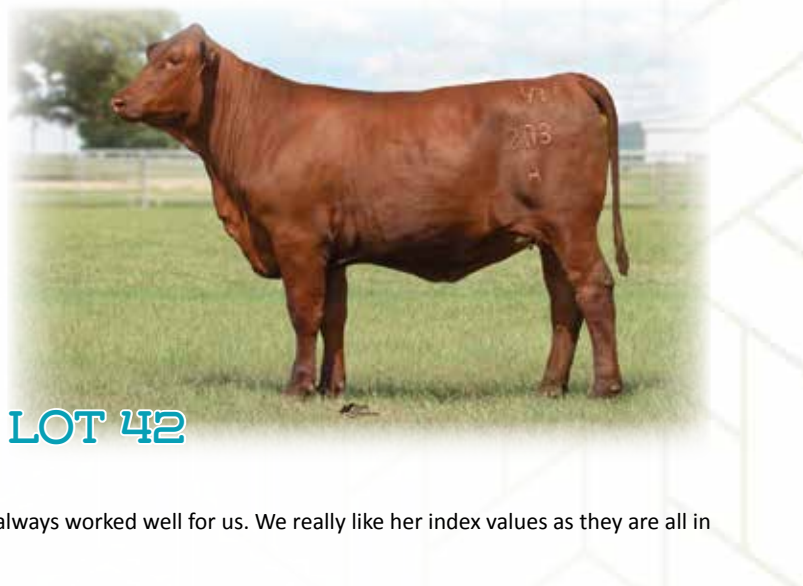
LJV MASON 0/72	SR 710	<b>Bal Idx</b> 35%
	LJV DOLLY 8/48	
<b>SR GENESIS 75/3</b>		<b>C/C Idx</b> 30%
20132516	MR WINROCK N127	
SR ARKOMA 30/0	PERNER D 931	<b>Term Idx</b> 40%
	D BAR J RED ROCK 400	
MR D BAR J ABEL 924	MISS D BAR J 483 (ET) 483	
<b>SOLOMON'S MISS ABBIE</b>		
20158210	SR 8/0	
SR 25/3 MILLIE	SR 866	

	BW	WW	YW	MILK	TM	SC	HCW	REA	MARB	FT
EPDs	-0.7	1	5	3	7	0.45	-1	0.04	0.12	0.02
Acc	.16	.34	.16	.18	--	.08	.09	.16	.18	.18
%Rank	30%	80%	65%	15%	50%	30%	40%	40%	20%	95%

AI to Hefte Ranch G70 Final Draft (20191558) 4/18/2022. NS to Four J Focus 19/243 (20187285) 5/5/22-7/11/22, SR Mpack 2/H4 (20200725) 7/11/22-9/27/22.

SR MS Genesis 203/H is a daughter of SR Genesis 75/3 out of the 5/5 Solomon Butler cow. 203/H is linebred Winrock New Millenium which has always worked well for us. We really like her index values as they are all in the Top 40% or better.

LOT 42



**SR MS GENESIS 613/J2**



20211186 • 613/J2 • 3/8/2021 • Polled • Bred Heifer

LJV MASON 0/72	SR 710	<b>Bal Idx</b> 20%
	LJV DOLLY 8/48	
<b>SR GENESIS 75/3</b>		<b>C/C Idx</b> 10%
20132516	MR WINROCK N127	
SR ARKOMA 30/0	PERNER D 931	<b>Term Idx</b> 45%
	KR 225/10	
KR CATALYST 531/15	KR 310/12 2YO	
<b>SR 10/18</b>		
20180839	LR CODE RED 45/353	
SR 6/0	SR 613	

	BW	WW	YW	MILK	TM	SC	HCW	REA	MARB	FT
EPDs	-0.4	8	12	-6	2	0.53	-2	0.01	0.04	0.03
Acc	.19	.36	.28	.19	--	.11	.13	.26	.37	.40
%Rank	45%	50%	40%	>95%	85%	15%	45%	50%	35%	>95%

AI to Hefte Ranch G70 Final Draft (20191558) 5/18/2022. NS to Four J Focus 19/243 (20187285) 5/30/22-7/11/22, SR Mpack 2/H4 (20200725) 7/11/22-9/27/22.

SR MS Genesis 613/J2 is a daughter of SR Genesis 75/3 out of the SR 10/18 donor cow who has a 369 day average calving interval after 3 calves. SR 10/18 is a maternal sister to SR 80/2, the dam of National Champion SR Hazel 23/7. 613/J2's profile is highlighted by her Top 20% Balanced Index and Top 10% Cow/Calf Index.

LOT 43







### SR MS 30F6 113/H



20207539 • 113/H • 12/5/2020 • Horned • Bred Heifer

SR 30/F6  
20181921

HARRIS 257/4

AJH 126/0  
HARRIS FARMS 037/2

SR ARKOMA 30/0

MR WINROCK N127  
PERNER D 931

OLIVAREZ 1/443

OLIVAREZ RANCH 5/203  
OLIVAREZ RANCHES 9/784

OLIVAREZ 4/534  
20144508

OLIVAREZ RANCH 4/113

OLIVAREZ RANCHES 8/767  
OLIVAREZ RANCHES 0/889

Bal Idx  
65%

C/C Idx  
85%

Term Idx  
50%

	BW	WW	YW	MILK	TM	SC	HCW	REA	MARB	FT
EPDs	-1.7	-6	-8	0	1	0.44	-4	0.03	0.17	0.00
Acc	.08	.33	.09	.11	--	.02	.06	.09	.13	.09
%Rank	2%	95%	95%	45%	90%	35%	55%	40%	15%	60%

At to Hefte Ranch G70 Final Draft (20191558) 4/18/2022. NS to Four J Focus 19/243 (20187285) 5/5/22-7/11/22, SR Mpack 2/H4 (20200725) 7/11/22-9/27/22.

SR MS 30F6 113/H is sired by SR 30/F6, a full brother to the SR Mpack 30/F2, and out of an Olivarez Ranch cow. We really like this cross and have retained some females produced out of this cross. This heifer's EPDs are highlighted by a Top 2% BW EPD and Top 15% MB EPD.



### SR MS 30/F6 461/J2



20211154 • 461/J2 • 2/24/2021 • Horned • Bred Heifer

SR 30/F6  
20181921

HARRIS 257/4

AJH 126/0  
HARRIS FARMS 037/2

SR ARKOMA 30/0

MR WINROCK N127  
PERNER D 931

OLIVAREZ 1/443

OLIVAREZ RANCH 5/203  
OLIVAREZ RANCHES 9/784

OR 7/670  
20171684

OLIVAREZ 2/461

OLIVAREZ RANCHE 3/91  
OLIVAREZ RANCH 4/115

Bal Idx  
40%

C/C Idx  
45%

Term Idx  
40%

	BW	WW	YW	MILK	TM	SC	HCW	REA	MARB	FT
EPDs	-1.5	1	-2	1	5	0.45	-3	0.00	0.09	-0.01
Acc	.08	.29	.13	.09	--	.02	.07	.12	.22	.24
%Rank	3%	80%	85%	35%	65%	30%	50%	55%	25%	20%

At to Hefte Ranch G70 Final Draft (20191558) 4/18/2022. NS to Four J Focus 19/243 (20187285) 5/5/22-7/21/22, SR Mpack 2/H4 (20200725) 7/21/22-9/27/22.

SR MS 30F6 461/J2 is sired by SR 30/F6, a full sibling to SR Mpack 30/F2, and out of an Olivarez bred cow that we purchased from Mr. Olivarez when he was reducing his herd. The Olivarez cattle are known for their performance, longevity, and hardiness.



LOT 45



### SR MS GENUINE 25/J2



20211116 • 25/J2 • 5/10/2021 • Polled • Bred Heifer

SR GENUINE 69/6  
20164735

SR GENESIS 75/3

LJV MASON 0/72  
SR ARKOMA 30/0

SR HOLLY T19 (ET)

RDF SANCHO'S NEVER BEFORE 1136  
SR HOLLY 033

RED DOC 2458

RED DOC MULTIPLE SIRE MS  
RED DOC MULTIPLE DAM MD

KILGORE 21/6  
20162174

KILGORE 25/1

KILGORE 92/3  
KILGORE 25/0

Bal Idx  
95%

C/C Idx  
95%

Term Idx  
95%

	BW	WW	YW	MILK	TM	SC	HCW	REA	MARB	FT
EPDs	-1.0	-1	-8	-3	0	0.42	-7	0.01	-0.16	0.01
Acc	.18	.34	.19	.11	--	.05	.09	.17	.30	.33
%Rank	15%	85%	95%	80%	95%	40%	80%	50%	>95%	85%

At to Red Doc Lumbre 8509 (20188237) 6/15/2022. NS to Wendt 9386 (20203887) 6/25/22-7/11/22, SR Mpack 2/H4 (20200725) 7/11/22-9/27/22.

SR MS Genuine 25/J2 is sired by our SR Genuine bull, a SR Genesis son out of the SR T19 donor cow owned by Townsend Cattle Company. 25/J2's dam was purchased from Gene & Harriett Kilgore in Kansas and she combines Red Doc, Cherokee and Kilgore genetics.



LOT 46







**SR MS GENUINE 49/J**



20211158 • 49/J • 2/19/2021 • Polled • Bred Heifer

SR GENESIS 75/3	LJV MASON 0/72 SR ARKOMA 30/0
<b>SR GENUINE 69/6</b>	
20164735	RDF SANCHO'S NEVER BEFORE 1136
SR HOLLY T19 (ET)	SR HOLLY 033
	KILGORE 45/7
HB 35-14	H&B RUBY 03
<b>KILGORE 49/7</b>	
20172812	KILGORE 92/3
KILGORE 49/4	KILGORE 49/3

Bal Idx  
75%  
C/C Idx  
80%  
Term Idx  
70%

	BW	WW	YW	MILK	TM	SC	HCW	REA	MARB	FT
EPDs	-0.4	6	4	-4	3	0.44	-2	0.03	-0.10	0.00
Acc	.17	.34	.19	.11	--	.05	.09	.17	.29	.32
%Rank	45%	55%	65%	90%	80%	35%	45%	40%	90%	60%

AI to Hefte Ranch G70 Final Draft (20191558) 4/18/2022. NS to Four J Focus 19/243 (20187285) 5/5/22-7/11/22, SR Mpcat 2/H4 (20200725) 7/11/22-9/27/22.

SR MS Genuine 49/J is another SR Genuine 69/6 daughter. 49/J is out of a Kilgore bred cow with Cherokee and Harding genetics. We sought out the Kilgore cattle to bring in an outcross and add some concentrated polled genetics to our herd.

LOT 47



**SR MS GENUINE 92/J**



20211240 • 92/J • 2/17/2021 • Polled • Bred Heifer

SR GENESIS 75/3	LJV MASON 0/72 SR ARKOMA 30/0
<b>SR GENUINE 69/6</b>	
20164735	RDF SANCHO'S NEVER BEFORE 1136
SR HOLLY T19 (ET)	SR HOLLY 033
	RED DOC MULTIPLE SIRE MS
RED DOC 2458	RED DOC MULTIPLE DAM MD
<b>KILGORE 92/6</b>	
20162171	CHEEKS 2/4/0
KILGORE 92/7	KILGORE 92/9

Bal Idx  
60%  
C/C Idx  
50%  
Term Idx  
70%

	BW	WW	YW	MILK	TM	SC	HCW	REA	MARB	FT
EPDs	-0.7	6	6	2	9	0.46	2	0.14	-0.14	0.00
Acc	.18	.34	.19	.11	--	.05	.09	.17	.29	.33
%Rank	30%	55%	60%	25%	35%	30%	25%	15%	95%	60%

AI to Hefte Ranch G70 Final Draft (20191558) 4/18/2022. NS to Four J Focus 19/243 (20187285) 5/5/22-7/11/22, SR Mpcat 2/H4 (20200725) 7/11/22-9/27/22.

SR MS Genuine 92/J is a SR Genuine 69/6 daughter out of a Kilgore bred cow with Cherokee, Cheeks and Creel genetics. 92/J had a Ribeye Area ratio of 112% when scanned as a yearling.

LOT 48



**SR MS 1802 63/J**



20211199 • 63/J • 4/17/2021 • Polled • Bred Heifer

SR GENUINE 69/6	SR GENESIS 75/3 SR HOLLY T19 (ET)
<b>SR AY 1802</b>	
20185124	HARCO T955 (ET) T955
SYCAMORE 591	LINDH 506
	SR GENESIS 75/3
SR 46/7	SR 516
<b>SR G03</b>	
20196090	KILGORE 45/7
KILGORE 63/7	KILGORE 6/3

Bal Idx  
50%  
C/C Idx  
40%  
Term Idx  
60%

	BW	WW	YW	MILK	TM	SC	HCW	REA	MARB	FT
EPDs	-0.8	7	4	0	8	0.49	-3	0.01	-0.08	-0.01
Acc	.08	.28	.15	.08	--	.02	.07	.14	.26	.30
%Rank	25%	55%	65%	45%	45%	25%	50%	50%	85%	20%

AI to Kings Amigo KR766/20 (20205189) 6/15/2022. NS to Wendt 9386 (20203887) 6/25/22-7/11/22, SR Mpcat 2/H4 (20200725) 7/11/22-9/27/22.

SR MS 1802 63/J is linebred SR Genesis 75/3. 63/J's sire, 1802, is out of the Sycamore 591 cow making him a maternal sibling to the 591/H2 bull selling today. Her dam, G03, combines Strait and Kilgore genetics and has a 359 day calving interval after 2 calves.

LOT 49







SR GENUINE 69/6  
SIRE OF LOTS 50 & 51



**SR MS GENUINE 94/J**

20211243 • 94/J • 4/30/2021 • Polled • Bred Heifer

SR GENESIS 75/3	LJV MASON 0/72	Bal Idx 80%
	SR ARKOMA 30/0	
<b>SR GENUINE 69/6</b>	RDF SANCHO'S NEVER BEFORE 1136	C/C Idx 85%
20164735	SR HOLLY T19 (ET)	
	SR HOLLY 033	Term Idx 70%
	CHEEKS 2/4/0	
	KILGORE 45/1	
<b>KILGORE 94/7</b>	RDF 1021 SMOOTH EYE 1021	
20172819	JC 284/2	
	SILVA 949/4	

	BW	WW	YW	MILK	TM	SC	HCW	REA	MARB	FT
EPDs	-0.4	0	0	0	4	0.46	-3	0.02	0.02	0.01
Acc	.17	.33	.19	.11	--	.05	.09	.17	.29	.32
%Rank	45%	80%	80%	45%	75%	30%	50%	45%	40%	85%

AI to Kings Amigo KR766/20 (20205189) 6/15/2022. NS to Wendt 9386 (20203887) 6/25/22-7/11/22, SR Mpat 2/H4 (20200725) 7/11/22-9/27/22.

SR MS Genuine 94/J is another lot sired by our SR Genuine 69/6 bull and out of a Kilgore cow with Cheeks and Red Doc breeding. We have retained a maternal sib to 94/J in the herd. 94/J's 110% marbling ratio at scanning caught our attention.



**SR MS GENUINE 816/J**

20211231 • 816/J • 4/21/2021 • Polled • Bred Heifer

SR GENESIS 75/3	LJV MASON 0/72	Bal Idx 10%
	SR ARKOMA 30/0	
<b>SR GENUINE 69/6</b>	RDF SANCHO'S NEVER BEFOR 1136	C/C Idx 10%
20164735	SR HOLLY T19 (ET)	
	SR HOLLY 033	Term Idx 15%
	KR 545/12	
	KR 316/08 3A	
<b>SJ LADY SARA816</b>	HARRIS FARM 12/8(WAVE MAKER) 12/8	
20182117	SJ LADY DAVINA 409	
	HARCO T884 (ET) T884	

	BW	WW	YW	MILK	TM	SC	HCW	REA	MARB	FT
EPDs	0.3	22	32	-2	13	0.56	14	0.26	-0.02	0.03
Acc	.14	.31	.20	.10	--	.06	.09	.18	.30	.33
%Rank	70%	10%	10%	70%	15%	10%	2%	2%	55%	>95%

AI to Harris Guns Up 216/5 (20152716) 6/15/2022 3/4 SG 1/4 RA. NS to Wendt 9386 (20203887) 6/25/22-7/11/22, SR Mpat 2/H4 (20200725) 7/11/22-9/27/22.

SR MS Genuine 816/J is sired by our SR Genesis 75/3 son, SR Genuine 69/6, and out of an excellent San Jose Cattle Company female that Avery won through the National Junior Donated Heifer Program. This San Jose cow, SJ Lady Zara, is sired by the KR 301/15 "Churchill" bull. We think this is a great combination of performance and production genetics.



**SR MS 90/5 673/J2**

20211208 • 673/J2 • 4/15/2021 • Horned • Bred Heifer

SR GENESIS 75/3	LJV MASON 0/72	Bal Idx 40%
	SR ARKOMA 30/0	
<b>SR 90/5</b>	4B-MR. BILLY RAY 337	C/C Idx 25%
20157838	TF 384	
	TF 407	Term Idx 65%
	BRIGGS 580/0	
	BRIGGS 092/10	
<b>C-P MS ROBERTO 673C9(ET)</b>	HARRIS FARMS 15/4	
20152562	SILVA 673/8	
	SILVA 491/4	

	BW	WW	YW	MILK	TM	SC	HCW	REA	MARB	FT
EPDs	0.2	12	7	0	9	0.46	-7	-0.09	0.00	0.02
Acc	.15	.33	.21	.15	--	.06	.10	.19	.32	.35
%Rank	65%	35%	55%	45%	35%	30%	80%	90%	50%	95%

AI to SR Mpat 30/F2 (20180821) 6/15/2022. NS to Wendt 9386 (20203887) 6/25/22-7/11/22, SR Mpat 2/H4 (20200725) 7/11/22-9/27/22.

SR MS 90/5 673/J2 is sired by the SR 90/5 bull now in use at Garza's Double G Farms out of an excellent ET daughter of Briggs Roberto 072/13 and Silva 673 that we bought from Pitchford Cattle. This heifer's EPDs are highlighted by her Heifer Pregnancy EPD ranking in the Top 15% and Cow/Calf Index ranking in the Top 25%.



**SR MS 1802 0815/J**

20211392 • 0815/J • 3/4/2021 • Polled • Bred Heifer

SR GENUINE 69/6	SR GENESIS 75/3	Bal Idx 45%
	SR HOLLY T19 (ET)	
<b>SR AY 1802</b>	HARCO T955 (ET) T955	C/C Idx 40%
20185124	SYCAMORE 591	
	LINDH 506	Term Idx 45%
	SR 710	
	LJV DOLLY 8/48	
<b>SR 29/19</b>	NUGGET'S JEWELS 6/03	
20190162	SR 2/5	
	SR 62/1	

	BW	WW	YW	MILK	TM	SC	HCW	REA	MARB	FT
EPDs	0.7	10	14	1	10	0.56	-1	0.10	-0.05	-0.02
Acc	.10	.30	.17	.10	--	.04	.09	.16	.28	.31
%Rank	85%	40%	35%	35%	30%	10%	40%	20%	70%	10%

AI to Red Doc Lumbre 8509 (20188237) 5/18/2022. NS to Four J Focus 19/243 (20187285) 5/30/22-7/11/22, SR Mpat 2/H4 (20200725) 7/11/22-9/27/22.

SR MS 1802 0815/J is another daughter of the SR AY 1802 bull and out of a LJV Mason 0/72 daughter that Avery and Arden showed. With 9 EPDs ranking in the Top 40%, 0815/J has a balanced EPD profile.







**SR MS PARADIGM 611/K2**



20221162 • 611/K2 • 2/24/2022 • Horned • Open Heifer

20175656	SR PARADIGM 135/7	KR CATALYST 531/15	KR 225/10 KR 310/12 2YO	Bal Idx 20%
		P H WELDER 7/342	P H WELDER 9/413 MISS GRANDVIEW 545	C/C Idx 15%
		LJV MASON 0/72	SR 710 LJV DOLLY 8/48	Term Idx 25%
20154704	SR 20/5	SR 611	WR CHALLENGER L230 LAZY E E11	

	BW	WW	YW	MILK	TM	SC	HCW	REA	MARB	FT
EPDs	0.5	11	15	-6	3	0.53	1	0.16	0.19	0.01
Acc	.21	.22	.19	.15	--	.09	.08	.17	.22	.23
%Rank	75%	35%	35%	>95%	80%	15%	30%	10%	10%	85%

SR MS Paradigm 611/K2 is sired by SR Paradigm 135/7 who is owned by Quail Valley Farms and out of SR 20/5, a stout LJV Mason 0/72 daughter out of SR 611. You will see several females in this sale including 43/20 and her calf, 611/K4, that are members of the same SR 611 cow family. 611/K2's dam, SR 20/5, has a 359 day average calving interval after 6 calves and will soon be a donor at Strait Ranches.

Strait Ranches retains the right to one flush or IVF procedure guaranteeing a minimum of six (6) freezable embryos.

LOT 54



**SR MS 68/F2 5235/J2**



20217277 • 5235/J2 • 11/22/2021 • Polled • Open Heifer

20186389	SR 68/F2	KR CATALYST 531/15	KR 225/10 KR 310/12 2YO	Bal Idx 15%
		SJ HIGH ROLLER 005	RDF MACHO MAN 0088 BRIGGS 081/0	C/C Idx 15%
20154618	WOMAN HOLLERIN 5235	ABRASION 235	HARRIS FARM 12/8(WAVE MAKER) 12/8 SJ LADY VEGAS 755	Term Idx 20%
			5-E'S SEVEN (ET) 7 TF 335	

	BW	WW	YW	MILK	TM	SC	HCW	REA	MARB	FT
EPDs	-0.1	16	21	-6	6	0.46	3	0.08	0.11	0.02
Acc	.14	.32	.10	.14	--	.05	.06	.10	.13	.14
%Rank	55%	20%	20%	>95%	60%	30%	20%	25%	20%	95%

SR MS 68F2 5235/J2 is sired by the SR 68/F2 bull now owned by Cedar Creek Farm and out of the Woman Hollerin 5235 cow who is a daughter of SJ High Roller 005. Please pay close attention to the 5235/J bull also in this sale as he is out of the same maternal line. We love this heifer's depth of body and EPD profile with 8 EPDs ranking in the Top 40%.

LOT 55



**SR MS PARADIGM 654/J4**



20217293 • 654/J4 • 11/2/2021 • Polled • Open Heifer

20175656	SR PARADIGM 135/7	KR CATALYST 531/15	KR 225/10 KR 310/12 2YO	Bal Idx 20%
		AJH 12/0	P H WELDER 9/413 MISS GRANDVIEW 545	C/C Idx 15%
20134765	SR 95/3	SR T1 (ET)	QT SHERMAN TANK (ET) 03/4 T.G. TOPANGA 450	Term Idx 30%
			HELLACIOUS 750 SR 654	

	BW	WW	YW	MILK	TM	SC	HCW	REA	MARB	FT
EPDs	-0.1	14	6	-5	6	0.37	-6	-0.02	0.15	0.00
Acc	.19	.32	.16	.16	--	.08	.09	.15	.19	.20
%Rank	55%	25%	60%	95%	60%	55%	70%	65%	15%	60%

SR MS Paradigm 654/J4 is another SR Paradigm 135/7 daughter. Going through this group of sale cattle makes us want to AI more cattle to him. Her dam, SR 95/3, a linebred Grizzly 3308 cow has done everything we have asked of her and currently has a 350 day average calving interval after 7 calves. 654/J4 currently has great index values all ranking in the Top 30% or better.

LOT 56







**SR MS GUNS UP ET 654/J15**



20217290 • 654/J15 • 9/15/2021 • Polled • Open Heifer

FC PISTOL 28/0	GUNSLINGER 13/5 HOLLY 20/3	Bal Idx 10%
<b>HARRIS GUNS UP 216/5</b> 20152716	SANTA GERTRUDIS MS RED ANGUS	
HINNANT-FULBRIGHT 9/153	KR 225/10 KR 310/12 2YO	Term Idx 15%
KR CATALYST 531/15	HELLACIOUS 750 SR 654	

	BW	WW	YW	MILK	TM	SC	HCW	REA	MARB	FT
EPDs	-1.1	19	19	-6	7	0.58	5	0.13	0.04	0.02
Acc	.17	.22	.16	.13	--	.09	.07	.15	.20	.21
%Rank	10%	15%	25%	>95%	50%	10%	15%	15%	35%	95%

SR MS Guns Up ET 654/J15 is a daughter of Harris Guns Up 216/5 and out of the SR 97/18 donor cow. SR 97/18 is also the dam to SR Ms MPact 654/H who sold to American Cattle Enterprise for \$20,000 in last year's Tried & True sale. The Guns Up / KR Catalyst cross has worked very well for us and we can't wait for you to see this heifer's full sib brothers. Harris Guns Up 216/5 caught our attention as we tried to buy his daughters and they continued to top sale after sale. 654/J15 currently has 8 EPDs ranking in the Top 35%.

LOT 57



**SR MS LUMBRE ET 253/J**



20217271 • 253/J • 9/5/2021 • Horned • Open Heifer

RED DOC DIABLO 6306	KR 189/11 RED DOC 3167	Bal Idx 2%
<b>RED DOC ET LUMBRE 8509</b> 20188237	RDF LAURELES149/03 RDF 3-4	
RED DOC ET 6332	FC PISTOL 28/0 HINNANT-FULBRIGHT 9/153	Term Idx 2%
HARRIS GUNS UP 216/5	KR RICARDO 182/02 MISS WINROCK M253	

	BW	WW	YW	MILK	TM	SC	HCW	REA	MARB	FT
EPDs	-1.6	28	28	-5	12	0.36	10	0.12	0.18	-0.01
Acc	.18	.19	.14	.09	--	.05	.06	.12	.18	.19
%Rank	3%	3%	10%	95%	20%	60%	5%	15%	10%	20%

SR MS Lumbre ET 253/J is sired by the Red Doc Lumbre 8509 bull, a Red Doc Diablo son. Her dam is the Harris 253F14 donor dam that we purchased half interest in partnership with Hefte Ranch for \$25,000. 253/J is maternal sister to 253/H3 who is also in the sale. 253/J currently has 8 traits ranking in the Top 20% highlighted by a Top 3% BW & WW EPDs.

LOT 58



**Strait Ranches retains the right to one flush or IVF procedure guaranteeing a minimum of six (6) freezable embryos.**



**SR MS NITRO ET 6054/J2**



20217281 • 6054/J2 • 9/4/2021 • Polled • Open Heifer

KR CATALYST 531/15	KR 225/10 KR 310/12 2YO	Bal Idx 10%
<b>CB NITRO 46/18</b> 20180828	SR GENESIS 75/3 SR T13 (ET)	
SR 15/6	RDF QUIEN SABE 0120 RDF BONITA 8017	Term Idx 10%
RED DOC SI SABE 3106	RDF SANCHO'S NEVER BEFORE 1136 RED DOC 8168	

	BW	WW	YW	MILK	TM	SC	HCW	REA	MARB	FT
EPDs	-0.5	19	23	-9	4	0.53	4	0.11	0.12	0.02
Acc	.21	.22	.15	.13	--	.04	.07	.14	.20	.21
%Rank	40%	15%	15%	>95%	75%	15%	20%	20%	20%	95%

SR MS Nitro ET 6054/J2 is a daughter of the high selling Nitro 46/18 bull now owned by Harris Riverbend Farm and out of the Red Doc 6054 donor dam who has a 356 day average calving interval after 5 calves. 6054/J2 is a maternal sister to both SR Marksman 33/19 and SR Strategist 32/20. This heifer has a balanced EPD profile with 9 EPDs in the Top 40%.

LOT 59





LOT 60 - IVF PICK

Strait Ranches is offering the right to IVF any cow in the Strait Ranches herd. We believe this is an opportunity for everyone regardless of program goals and have never opened everything up like this before. The following proven donors are included in this opportunity: SR Arkoma 30/0 (Reg #1289177), National Champion SR Hazel 23/7 (Reg # 20171001), SR 97/18 (Reg #20185084), SR 368/G2 (Reg #20195994), Red Doc 6054 (Reg# 20165208), CTF Quien Sabe's Beauty (Reg #20154810), 3S2E Marla 368D2 (ET) Reg #20164630 and many others. Only females born prior to June 1, 2021 can be selected; no partnership cows are included in this pick. Once a donor female has been selected, Strait Ranches will coordinate aspiration date at embryo collection facility to be chosen by Strait Ranches.

Strait Ranches is offering the opportunity to acquire one (1) IVF procedure in one (1) cow guaranteeing a minimum of six (6) freezable embryos. Buyer is responsible for providing semen, boarding, cost of IVF procedure and freezing. Timing of procedure will depend on expected calving date of selected donor.



SR ARKOMA 30/0



SR HAZEL 23/7



Photo taken by Harry Lawson

CTF QUIEN SABE'S BEAUTY



Photo taken by Harry Lawson

3S2E MARLA 368D2



**LOT 61 - SEMEN LOT**

Vesper Ranch purchased 50% interest and 50% possession in SR MPACT 30/F2 from Strait Ranches in the 2019 Tried and True Production Sale for \$46,000. Only semen sold to date was in the 2020 Tried & True Production Sale. SR MPACT 30/F2 is an ET son of Harris 257/4 "Cherokee Grand Canyon" owned by Cherokee Ranch and out of the SR Arkoma 30/0 donor cow making him a maternal brother to SR Genesis 75/3, Korban Cattle's \$30,000 SR 30/F3 donor, SR Catalyst Gem 13/18 as well as SR Surge 4/19 and SR Gulf Strait 25/20 both owned by Wiley Ranch. His sire, Harris 257/4, had excellent yearling scan data with a %IMF of 5.40 and a 13.00 REA (1.17 REA/cwt). His dam, SR Arkoma 30/0, is the backbone of the Strait Ranches operation due to the consistency of her offspring. SR MPACT 30/F2 caught our attention as a calf due to his striking phenotype and then demanded our attention after we reviewed his yearling gain test and scan data: 4.42 ADG, 14.61 Adjusted REA (1.18 REA/cwt), 6.03 Adjusted %IMF, and .44 BF. He currently has 7 EPDs that rank in the Top 35% highlighted by his Top 1% BW EPD and Top 2% MB EPD.



**SR IMPACT 30/F2**



**SR MPACT 30/F2**

20180821 • 30/F2 • 2/10/2018 • Horned • Bull

AJH 126/0	CHAPS 372	<b>Bal Idx</b> 10%
	DOUBLE E 8T39	
<b>HARRIS 257/4</b> 20145305	QT SHERMAN TANK (ET) 03/4	<b>C/C Idx</b> 25%
HARRIS FARMS 037/2	HARWELL 20	
MR WINROCK N127	WR NEW MILLENNIUM H233	<b>Term Idx</b> 10%
	MASDEN & SON 225/9	
<b>SR ARKOMA 30/0</b> 1289177	CHF SAMBO 514	
PERNER D 931	DOUBLE P RANCH 345	

	BW	WW	YW	MILK	TM	SC	HCW	REA	MARB	FT
EPDs	-2.5	4	8	0	6	0.54	3	0.06	0.42	0.00
Acc	.54	.66	.53	.30	--	.20	.32	.49	.63	.66
%Rank	1%	75%	60%	50%	70%	20%	30%	35%	2%	60%

Strait Ranches and Vesper Ranch are offering three (3), ten (10) straw semen packages.



**HEFTE RANCH F14 TOMCAT**

20175282 • F14 • 10/20/2017 • Polled • Bull

KR 800/11	RDF 8052	<b>Bal Idx</b> 2%
	KR 307/06 4B	
<b>KR 921/15</b> 20154201	WAUKARAU GOLD MINE 6151	<b>C/C Idx</b> 10%
KR 110N/09 110/09 N6	KR 23/001	
HARCO 1323	HARCO T956 (ET) T956	<b>Term Idx</b> 2%
	HARCO T720 (ET) T720	
<b>HEFTE RANCH D140ET</b> 20157775	MR CVF 2022	
BRIGGS 039/5	BRIGGS 046/1	

	BW	WW	YW	MILK	TM	SC	HCW	REA	MARB	FT
EPDs	-1.6	20	27	7	20	0.19	12	0.20	0.46	0.01
Acc	.53	.61	.43	.28	--	.24	.30	.39	.54	.57
%Rank	4%	20%	20%	5%	3%	95%	10%	10%	1%	85%

Hefte Ranch is Offering 1 straw of semen for one IVF Flush to the cow of your choice. Hefte Ranch will guarantee six (6) freezable embryos from the flush.

**LOT 62 - SEMEN LOT**

Hefte Ranch F14 Tomcat continues to impress us - he has even impressed us enough to get a name! He is a trait leader for BW and Marb. Tomcat ranks in to top 20% for WW and YW and he is consistently throwing top calves in every contemporary group at Hefte Ranch. Hefte Ranch does not plan to sell semen on this bull in the short term, so here is a opportunity to try this proven sire trait leader on your favorite cow.



**HEFTE RANCH F14 TOMCAT**







LOT 70

Here is a pedigree full of herd-changing, trait-leading, proven performance in a bull with style, symmetry and balance. J115 was always that calf that caught your eye for being very sound and correct. When he came home from the gain test, we were floored to see that he had become a BULL - full of meat, easy fleshing, and very smooth all the way around. He is a high EPD bull that looks like a meat wagon. He brings it all together with power and EPDs to match. What more can you ask from a bull! Hefte Ranch will be retaining half interest and half possession in J115. We will work to the new buyer's advantage, however, we see a bright future for this bull and want to be a part of it.



**HEFTE RANCH J115 ET**



20212115 • J115 • 3/11/2021 • Scurred • Bull

KR 97/10	RDF 8052	Bal Idx 3%
	KR N2/5 4A	
<b>KR 191/13</b>		C/C Idx 10%
20131196	FIVE OAKS 29/0	
KR 517/04 1A	KR 70/0	Term Idx 2%
	LJV MASON 0/72	
SR GENESIS 75/3	SR ARKOMA 30/0	
<b>QVF MS 75/3 5369G4</b>		
20190586	36/3	
RED DOC 5369	RDF 0035	

	BW	WW	YW	MILK	TM	SC	HCW	REA	MARB	FT
EPDs	-0.9	15	26	-10	2	0.39	10	0.18	0.38	-0.01
Acc	.20	.24	.22	.17	--	.13	.10	.22	.25	.26
%Rank	20%	25%	15%	>95%	85%	45%	5%	10%	2%	20%

**Selling 50% Semen Interest & 50% Possession**  
 9 traits in the top 25%, Adj YW 1206 lbs, REA 15.4, %IMF 4.8, SC 36 cm







SR Advantage 5235/J is a unique combination of genetics as he is sired by the SR 128/6 bull, a LJV Mason 0/72 son that goes back to National Junior Champion SR Isabella 557. 5235/J's dam, SR 88/7, has a 367 day average calving interval after 4 calves. SR 88/7 is the very first KR Catalyst 531/15 daughter out a SJ High Roller daughter from Woman Hollerin Ranch. 5235/J has 8 EPDs that rank in the Top 40% including a Top 10% BB, Top 15% YW, HP & MB, and Top 20% REA.



**SR ADVANTAGE 5235/J**



20211164 • 5235/J • 3/10/2021 • Polled • Bull

SR 128/6 20167254	LJV MASON 0/72	SR 710 LJV DOLLY 8/48	Bal Idx 15%
	SR T8 (ET)	HELLACIOUS 750 SR ISABELLA 557	
SR 88/7 20171843	KR CATALYST 531/15	KR 225/10 KR 310/12 2YO	Term Idx 20%
	WOMAN HOLLERIN 5235	SJ HIGH ROLLER 005 ABRASION 235	

	BW	WW	YW	MILK	TM	SC	HCW	REA	MARB	FT
EPDs	0.5	10	23	-5	4	0.43	4	0.11	0.15	0.01
Acc	.12	.33	.21	.13	--	.06	.10	.20	.32	.36
%Rank	75%	40%	15%	95%	75%	35%	20%	20%	15%	85%

Stait Ranches will sell 100% possession and retain 50% interest including marketing rights.







This is the only Hefte Ranch F14 Tomcat son to sell this year and he is a great representation of what F14 genetics offer. Gentle and eye-catching, J125 is very thick, full of muscle, and has the performance to match his good looks. His dam, Hefte Ranch C54 goes back to our Dunlap Harper genetics and has been a solid producer for us. Strong EPDs and a very unique pedigree which brings together old and new genetics. Don't miss this opportunity to own a F14 Tomcat son.



### HEFTE RANCH J125

20212125 • J125 • 3/2/2021 • Scurred • Bull



KR 921/15	KR 800/11	Bal Idx 20%
<b>HEFTE RANCH F14 TOMCAT</b>	KR 110N/09 110/09 N6	
20175282	HARCO 1323	C/C Idx 20%
HEFTE RANCH D140ET	BRIGGS 039/5	
LMR DANDY 024	WENDT 6788	Term Idx 20%
<b>HEFTE RANCH C54</b>	LMR LEAH 314	
20151408	DUNLAP HARPER 74/08	
LIZZY 54/06	LIZ 07/02	

	BW	WW	YW	MILK	TM	SC	HCW	REA	MARB	FT
EPDs	-0.3	15	14	4	15	0.26	1	0.06	0.16	0.01
Acc	.17	.33	.20	.14	--	.05	.09	.19	.31	.34
%Rank	50%	25%	35%	10%	10%	90%	30%	30%	15%	85%

Hefte Ranch will retain a semen interest for "in herd" use, all marketable semen rights go to the buyer

Adj WW 671lbs, Adj YW 1165 lbs, REA 15.18, %IMF 4.8, SC 42 cm







LOT 73

SR Dozer 801/J is a son of SR Mpac 30/F2 out of the CB 801 cow that we purchased from Cotton Branch at the Houston International Super Sale. CB 801 has a 377 day average calving interval after 3 calves and is an own daughter of the CB War Hawk 4/5. SR Dozer 801/J had an incredible ultrasound day with a 139% IMF ratio and 115% REA ratio.



**SR DOZER 801/J**



20211229 • 801/J • 2/4/2021 • Horned • Bull

HARRIS 257/4	AJH 126/0 HARRIS FARMS 037/2	Bal Idx 3%
SR MPACT 30/F2 20180821	MR WINROCK N127 PERNER D 931 FC PISTOL 28/0 HF ROSE 115/8	
CB WAR HAWK 4/5	CB BEAR 30/2 ALEXANDER 24/6	Term Idx 2%
CB 801 20181514	CB 422	

	BW	WW	YW	MILK	TM	SC	HCW	REA	MARB	FT
EPDs	-0.9	15	33	1	12	0.55	15	0.27	0.48	0.05
Acc	.20	.35	.25	.12	--	.04	.11	.23	.35	.38
%Rank	20%	25%	5%	35%	20%	15%	1%	2%	1%	>95%

Stait Ranches will retain a 50% semen interest for "in herd" use only, all marketable semen rights go to the buyer.



CB 801  
DAM OF LOT 73





### LOT 74 - HEFTE RANCH J100

There is not enough room to list all the things we like about this young bull. He is one the first available sons of Hefte Ranch G70 Final Draft, a bull that caught our attention with his outstanding performance. His dam, Hefte Ranch D136ET goes back to our Dunlap Harper bloodlines and is one of the prettiest, soundest cows in the herd. She has a calving interval of 387 days with 5 calves produced. J100 is as eye appealing as they come, very gentle, smooth polled and has a very bright future.



LOT 74



#### HEFTE RANCH J100

20212100 • J100 • 3/16/2021 • Polled • Bull



KR 191/13  
**HEFTE RANCH G70**  
 20191558 HEFTE RANCH D122  
 RPV 7/0 RPV7/0  
**HEFTE RANCH D136ET**  
 20156120 LIZZY 54/06

KR 97/10  
 KR 517/04 1A  
 ROSE HILL SAM HOUSTON 831  
 MUSCLES W53  
 FIVE OAKS 74  
 RPV 60/4  
 DUNLAP HARPER 74/08  
 LIZ 07/02

**Bal Idx**  
50%  
**C/C Idx**  
45%  
**Term Idx**  
50%

	BW	WW	YW	MILK	TM	SC	HCW	REA	MARB	FT
EPDs	0.0	5	3	-4	2	0.49	-6	-0.09	0.09	-0.01
Acc	.12	.30	.19	.14	--	.05	.09	.17	.29	.33
%Rank	60%	60%	70%	90%	85%	25%	70%	90%	25%	20%

Hefte Ranch will retain a semen interest for "in herd" use, all marketable semen rights go to the buyer

Adj WW 609 lbs, Adj YW 1087, 4.7%IMF, SC 37 cm



#### HEFTE RANCH J05

20207511 • J05 • 12/15/2020 • Scurred • Bull



KR 97/10  
**HEFTE RANCH B107**  
 20140301 BELLATRIX X19

RDF 8052  
 KR N2/5 4A  
 FIVE OAKS 29/0  
 KR 70/0  
 CHAPS 372  
 DOUBLE E 8T39  
 PG 510-6  
 HEFTE RANCH 629

**Bal Idx**  
25%  
**C/C Idx**  
20%  
**Term Idx**  
30%

	BW	WW	YW	MILK	TM	SC	HCW	REA	MARB	FT
EPDs	0.4	12	18	-9	0	0.22	2	0.11	0.09	0.03
Acc	.19	.36	.26	.22	--	.13	.13	.25	.34	.37
%Rank	75%	35%	25%	>95%	95%	95%	25%	20%	25%	>95%

Selling 100% Semen Interest & Full Possession

Adj WW 596 lbs, Adj YW 1126 lbs, Adj %IMF 4.5, SC 33 cm

### LOT 75 - HEFTE RANCH J05

This bull has KR 191/13 written all over him. Like his sire, he is dark cherry red, sound as a cat, and full of natural muscle. His dam, Hefte Ranch B107 has a history of producing herd sires. Her 2017 calf, Hefte Ranch F82 is well represented as a sire of many lots in this sale. She has a 361 day calving interval with 6 calves produced. J05 is the first bull you notice when you walk in the pen, and he will be the one you regret leaving behind.



LOT 75





**LOT 76 - SR WAR HORSE 1812/J**

SR War Horse 1812/J is another SR 87/7 "Wickham" son out of a MC 423 daughter that goes back to Stone Cold 21/1, Nineteen 519 and Clarendon 740. 1812/J's 111% IMF ratio and 107% Ribeye Area ratio contribute in part to his excellent EPD profile with 10 EPDs ranking in the Top 30%.



LOT 76



**SR WAR HORSE 1812/J**

20211094 • 1812/J • 3/21/2021 • Horned • Bull



SR 87/7  
20171842

KR CATALYST 531/15

CTF QUIEN SABE'S BEAUTY

MC 423

HCC LITTLE SASSY 1812

20120595 SF 813/10

KR 225/10

KR 310/12 2YO

RED DOC 3150

RED DOC 3227

TOP GUN 244

ROCKY HAMMOCK 54/5

CASPER/RSR 1/45

KILGORE 17/6

Bal Idx  
10%

C/C Idx  
10%

Term Idx  
10%

	BW	WW	YW	MILK	TM	SC	HCW	REA	MARB	FT
EPDs	0.0	17	16	-2	10	0.59	4	0.19	0.29	-0.01
Acc	.11	.31	.18	.11	-	.05	.09	.16	.27	.30
%Rank	60%	20%	30%	70%	30%	10%	20%	10%	4%	20%

Strait Ranches will retain a 50% semen interest for "in herd" use only, all marketable semen rights go to the buyer.



**SR ECLIPSE 2528/J**

20211118 • 2528/J • 3/6/2021 • Horned • Bull



SR 87/7  
20171842

KR CATALYST 531/15

CTF QUIEN SABE'S BEAUTY

YOGI 1562

HCC CRAZY H 1833

20134757 HCC MAGGIE 25/28 2528

KR 225/10

KR 310/12 2YO

RED DOC 3150

RED DOC 3227

COTTON BRANCH BIG BEAR 8345

HARRIS FARMS 729

HEARD'S PLAYBOY 881/5

POLLED HEREFORD 66

Bal Idx  
10%

C/C Idx  
5%

Term Idx  
20%

	BW	WW	YW	MILK	TM	SC	HCW	REA	MARB	FT
EPDs	-0.2	19	18	-4	9	0.58	3	0.09	0.09	0.03
Acc	.11	.32	.19	.11	-	.05	.10	.17	.28	.31
%Rank	50%	15%	25%	90%	35%	10%	20%	25%	25%	>95%

Strait Ranches will retain a 50% semen interest for "in herd" use only, all marketable semen rights go to the buyer.

**LOT 77 - SR ECLIPSE 2528/J**

SR Eclipse 2528/J is a 7/8 (Purebred) that continues to catch people's attention when going through the bull pen. He is an own son SR 87/7 "Wickham" and out of a Yogi 1562 daughter that we purchased from Heil Cattle Co. With 9 EPDs ranking in the Top 40% he can work in programs with a multitude of goals.



LOT 77



### LOT 78 - HEFTE RANCH J153 ET

A full ET sib to Lot 70 – J115 and Lot 12 – J108. Combining KR 191/13 with Red Doc 5369 genetics was a grand slam as you can see from the consistent phenotype and performance across this mating. This pedigree combines some of the most profitable animals in the breed, Red Doc 5369, KR 191/13, LJV Mason and SR Arkoma 30/0. This gentle, stylish bull has a great sheath, is dark red and has loaded EPDs!



LOT 78

**HEFTE RANCH J153 ET**  
20215487 • J153 • 3/16/2021 • Horned • Bull

<p>KR 97/10</p> <p><b>KR 191/13</b> 20131196</p> <p>KR 517/04 1A</p> <p>SR GENESIS 75/3</p> <p><b>QVF MS 75/3 5369G4</b> 20190586</p> <p>RED DOC 5369</p>	<p>RDF 8052</p> <p>KR N2/5 4A</p> <p>FIVE OAKS 29/0</p> <p>KR 70/0</p> <p>LJV MASON 0/72</p> <p>SR ARKOMA 30/0</p> <p>36/3</p> <p>RDF 0035</p>	<p><b>Bal Idx</b> 3%</p> <p><b>C/C Idx</b> 10%</p> <p><b>Term Idx</b> 2%</p>
---	--	--

	BW	WW	YW	MILK	TM	SC	HCW	REA	MARB	FT
EPDs	-0.9	15	26	-10	2	0.39	10	0.18	0.38	-0.01
Acc	.20	.24	.22	.17	-	.13	.10	.22	.25	.26
%Rank	20%	25%	15%	>95%	85%	45%	5%	10%	2%	20%

**HEFTE RANCH J154**  
20215488 • J154 • 3/26/2021 • Horned • Bull

<p>KR 191/13</p> <p><b>HEFTE RANCH G18</b> 20187243</p> <p>HEFTE W24</p> <p>HEFTE'S YUMA Y04</p> <p><b>HEFTE RANCH A58</b> 20132865</p> <p>MISS VELVET HEAD 4/1</p>	<p>KR 97/10</p> <p>KR 517/04 1A</p> <p>PG 510-6</p> <p>OLIVAREZ RANCHES 880</p> <p>PG 510-6</p> <p>HEFTE RANCH 702</p> <p>CIRCLE A SLUGGER (ET) 909</p> <p>MISS SHENNA RAE 2/09</p>	<p><b>Bal Idx</b> 40%</p> <p><b>C/C Idx</b> 25%</p> <p><b>Term Idx</b> 65%</p>
---	---	--

	BW	WW	YW	MILK	TM	SC	HCW	REA	MARB	FT
EPDs	0.0	7	11	-4	4	0.20	2	0.12	-0.12	0.01
Acc	.08	.27	.17	.15	-	.04	.08	.16	.26	.29
%Rank	60%	55%	45%	90%	75%	>95%	25%	15%	95%	85%

Hefte Ranch will retain a semen interest for "in herd" use, all marketable semen rights go to the buyer  
9 traits in the top 25%, Adj YW 1199 lbs, REA 15.3, %IMF 4.3, SC 40 cm

Selling 100% Semen Interest & Full Possession  
Adj WW 595 lbs, Adj YW 1104, 35 cm

### LOT 79 - HEFTE RANCH J154

This is a son of Hefte Ranch G18, a KR 191/13 son out of one of our favorite cows with bloodlines going back to Olivarez Ranches. His dam, Hefte Ranch A58, goes back to Vesper genetics. Deep chested, dark red, big boned and he carries muscle deep down his leg. Not to mention, he still has style and is as gentle as a puppy.



LOT 79



**LOT 80 - SR VIKING 1/J2**

SR Viking 1/J2 is another son of SR 87/7 "Wickham" out of a Grandview John 316 daughter that we purchased from Heil Cattle Co. His dam, 370/7, has a 375 day average calving interval after 2 calves. 1/J2 currently has 7 EPDs ranking in the Top 35%.



**SR VIKING 1/J2**

20211070 • 1/J2 • 1/23/2021 • Horned • Bull

KR CATALYST 531/15

KR 225/10  
KR 310/12 2YO

SR 87/7  
20171842

CTF QUIEN SABE'S BEAUTY

RED DOC 3150  
RED DOC 3227

GRANDVIEW JOHN 316

RED HOT 4010  
HARCO T640 (ET) T640

HCC 1281 316 370/7

20175089

HCC 881/5 1/6 GIGGLES 128/1

HEARD'S PLAYBOY 881/5  
SF 1/6



Bal Idx  
15%

C/C Idx  
10%

Term Idx  
25%

	BW	WW	YW	MILK	TM	SC	HCW	REA	MARB	FT
EPDs	-0.1	12	11	-3	6	0.55	1	0.09	0.15	0.01
Acc	.12	.32	.11	.10	--	.05	.07	.11	.14	.14
%Rank	55%	35%	45%	80%	60%	15%	30%	25%	15%	85%



**SR GENERALIST 591/H2**

20207574 • 591/H2 • 12/14/2020 • Horned • Bull

LJV MASON 0/72

SR 710  
LJV DOLLY 8/48

SR GENESIS 75/3  
20132516

SR ARKOMA 30/0

MR WINROCK N127  
PERNER D 931

HARCO T955 (ET) T955

PCR AVALANCHE 95/5 (ET) 95/5  
HARCO T265/5 (ET) T265/5

SYCAMORE 591

20155768

LINDH 506

MRS K B YOST BULL  
MRS K B YOST COW



Bal Idx  
5%

C/C Idx  
3%

Term Idx  
10%

	BW	WW	YW	MILK	TM	SC	HCW	REA	MARB	FT
EPDs	-0.6	23	20	0	15	0.54	4	0.09	0.07	-0.01
Acc	.17	.34	.22	.18	--	.09	.11	.20	.30	.32
%Rank	35%	10%	20%	45%	10%	15%	20%	25%	30%	20%

**LOT 81 - SR GENERALIST 591/H2**

SR Generalist 591/H2 is a SR Genesis 75/3 son out of the Sycamore 591 cow with Harris and Lindh/Yost foundation genetics. The Sycamore 591 cow has an average calving interval of 393 days after 5 calves and she just weaned another exceptional bull calf. We love this bull's EPD profile as every EPD is in the Top 55% of the breed highlighted by a Top 10% WW & TM EPD.






### LOT 82 - HEFTE RANCH J20


We don't often let go of genetics out of Hefte Ranch A43 "Allie", but we decided to share the love with Hefte Ranch J20. A43 is one of our most consistent donor cows. She has proven herself time and again with multiple sires. She brings performance with old school genetics and a deep, soggy look that is hard to find. J20 should bring all that and more with the added touch of KR 191/13. J20 also boasts an impressive EPD set with lots of fertility and strong carcass. We can't wait to see the replacement females out of this young herd sire.



LOT 82




**HEFTE RANCH J20**  
20207516 • J20 • 12/3/2020 • Scurred • Bull




<p>KR 97/10</p> <p><b>KR 191/13</b> 20131196</p> <p>KR 517/04 1A</p> <p>RPV 7/0 RPV7/0</p> <p><b>HEFTE RANCH A43</b> 20130190</p> <p>LIZZY 54/06</p>	<p>RDF 8052 KR N2/5 4A</p> <p>FIVE OAKS 29/0 KR 70/0</p> <p>FIVE OAKS 74 RPV 60/4</p> <p>DUNLAP HARPER 74/08 LIZ 07/02</p>	<p><b>Bal Idx</b> 15%</p> <p><b>C/C Idx</b> 20%</p> <p><b>Term Idx</b> 15%</p>
--	--	--

	BW	WW	YW	MILK	TM	SC	HCW	REA	MARB	FT
EPDs	0.4	18	22	-9	3	0.40	4	0.12	0.10	-0.02
Acc	.20	.37	.26	.21	--	.12	.12	.24	.35	.37
%Rank	75%	15%	20%	>95%	80%	45%	20%	15%	20%	20%

**Selling 100% Semen Interest & Full Possession**  
8 traits in the top 25%, Adj WW 587 lbs, Adj YW 1089 lbs, %IMF 4.5, SC 31 cm



**HEFTE RANCH J27**  
20212162 • J27 • 1/22/2021 • Polled • Bull



<p>RED DOC 3162</p> <p><b>HEFTE RANCH F82</b> 20176895</p> <p>HEFTE RANCH B107</p> <p>KR 191/13</p> <p><b>HEFTE RANCH G10</b> 20187229</p> <p>HEFTE RANCH PALOMA BLANCA</p>	<p>RDF QUIEN SABE 0120 RDF 5-27</p> <p>AJH 126/0 BELLATRIX X19 KR 97/10 KR 517/04 1A</p> <p>RED DOC TOP SHELF 1342 MABEL W40</p>	<p><b>Bal Idx</b> 10%</p> <p><b>C/C Idx</b> 15%</p> <p><b>Term Idx</b> 5%</p>
---	--	---

	BW	WW	YW	MILK	TM	SC	HCW	REA	MARB	FT
EPDs	-2.6	9	17	-5	3	0.27	11	0.22	0.16	0.01
Acc	.27	.33	.22	.11	--	.06	.10	.20	.31	.34
%Rank	1%	45%	30%	95%	80%	90%	3%	4%	15%	85%

**Selling 100% Semen Interest & Full Possession**  
Top 1% BW, top 3% CW, top 4% REA, Adj BW 66 lbs, Adj WW 619 lbs, Adj YW 1219, SC 30 cm

### LOT 83 - HEFTE RANCH J27

Don't miss this fancy bull, there is a lot to appreciate here. His dam, Hefte Ranch G10, a KR 191/13 daughter, is a poster cow for Santa Gertrudis breed character and she has passed her exceptional confirmation on to her first calf. His sire is the young F82 bull that topped his gain test contemporary group back in 2019. J27 posts an actual BW of 69 lbs and ranks in the top 1% for BW. His huge 15.86 REA translates to a 1.21 REA/cwt. Very much looking forward to seeing what this bull will accomplish in the future.



LOT 83



**LOT 84 - SR GENUINE 23/H**

SR Genuine 23/H is sired by SR Genuine 69/6 and out of National Champion SR Hazel 23/7. The SR Genuine 69/6 bull is a full brother to Kalli Kimble's SR 18/18 cow and his pedigree goes back to our SR Holly 033 cow. You will find his maternal sister, 23/J4, in our female offering. This bull has 6 EPDs that rank in the Top 30%.



**LOT 84**



**SR GENUINE 23/H**

20207546 • 23/H • 12/25/2020 • Horned • Bull



**SR MPACT ET 621/J**

20211193 • 621/J • 1/30/2021 • Polled • Bull



SR GENESIS 75/3	LJV MASON 0/72	
	SR ARKOMA 30/0	
<b>SR GENUINE 69/6</b>		<b>Bal Idx</b>
20164735	RDF SANCHO'S NEVER BEFORE 1136	50%
	SR HOLLY 033	<b>C/C Idx</b>
SR HOLLY T19 (ET)	SR 710	60%
	LJV DOLLY 8/48	<b>Term Idx</b>
LJV MASON 0/72		40%
<b>SR HAZEL 23/7</b>		
20171001	AL ZEUS 213	
SR 80/2	SR 6/0	

	BW	WW	YW	MILK	TM	SC	HCW	REA	MARB	FT
EPDs	0.4	13	18	-3	8	0.49	2	0.14	-0.05	0.02
Acc	.16	.34	.21	.13	--	.07	.11	.19	.30	.32
%Rank	75%	30%	25%	80%	45%	25%	25%	15%	70%	85%

HARRIS 257/4	AJH 126/0	
	HARRIS FARMS 037/2	
<b>SR MPACT 30/F2</b>		<b>Bal Idx</b>
20180821	MR WINROCK N127	10%
	PERNER D 931	<b>C/C Idx</b>
SR ARKOMA 30/0	BRIGGS 052/11	15%
	BRIGGS 124/12	<b>Term Idx</b>
TARZAN BRIGGS 651D2		15%
<b>BRIGGS 621F6</b>		
20187378	BRIGGS 631/5	
556/14	BRIGGS 609/9	

	BW	WW	YW	MILK	TM	SC	HCW	REA	MARB	FT
EPDs	-1.0	8	14	5	13	0.57	3	0.05	0.24	0.01
Acc	.14	.22	.23	.11	--	.05	.09	.21	.31	.33
%Rank	15%	50%	35%	10%	15%	10%	20%	35%	10%	85%

**LOT 85 - SR MPACT ET 621/J**

SR Mpact ET 621/J is sired by the SR Mpact 30/F2 and out of our favorite Briggs cow of all time, Briggs 621F6, who had a 327 day calving interval after 2 calves. We really like the fact that this bull has 10 EPDs ranking in the Top 35% including a Top 10% MILK EPD.



**LOT 85**





**SR BRUNSWICK 10/J4**



20211073 • 10/J4 • 3/20/2021 • Polled • Bull

RED ANGUS	RED ANGUS	
<b>FEDDES BRUNSWICK D202</b>	RED ANGUS	<b>Bal Idx</b>
20168816	RED ANGUS	2%
	LJV MASON 0/72	<b>C/C Idx</b>
SR GENESIS 75/3	SR ARKOMA 30/0	15%
	LJV MASON 0/72	<b>Term Idx</b>
<b>SR 43/19</b>	SR 10.0 10/0	1%
20190172		
SR 17/5		

	BW	WW	YW	MILK	TM	SC	HCW	REA	MARB	FT
EPDs	-0.6	13	47	-1	9	0.65	10	0.09	0.28	-0.01
Acc	.08	.29	.18	.08	--	.03	.09	.17	.30	.34
%Rank	35%	30%	1%	60%	35%	3%	5%	25%	4%	20%

SR Brunswick 10/J4 is a 50% SG 50% RA sired by Feddes Brunswick D202 and out of a SR Genesis 75/3 daughter that goes back to the dam of SR 60/3 "Miss Yancey", SR 10/0. 10/J4 has 11 EPDs that rank in the top 35% highlighted by a Top 1% YW EPD. His dam, SR 43/19, has a calving interval of 374 after 2 calves

LOT 86



**STRAIT HEFTE 30F6 5369/J2**



20211168 • 5369/J2 • 3/29/2021 • Polled • Bull

HARRIS 257/4	AJH 126/0	
<b>SR 30/F6</b>	HARRIS FARMS 037/2	<b>Bal Idx</b>
20181921	MR WINROCK N127	10%
	PERNER D 931	<b>C/C Idx</b>
SR ARKOMA 30/0	LJV MASON 0/72	20%
	SR ARKOMA 30/0	<b>Term Idx</b>
SR GENESIS 75/3		5%
<b>QVF MS 75/3 5369G4</b>		
20190586	36/3	
RED DOC 5369	RDF 0035	

	BW	WW	YW	MILK	TM	SC	HCW	REA	MARB	FT
EPDs	-2.1	8	5	-4	4	0.47	-1	-0.01	0.43	-0.01
Acc	.15	.34	.22	.11	--	.05	.10	.20	.33	.36
%Rank	1%	50%	65%	90%	75%	25%	40%	60%	1%	20%

Strait Hefte 30F6 5369/J2 is sired by SR 30/F6, a full brother to SR Mpackt 30/F2 and out of QVF MS 75/3 5369G4. 5369G4 was Strait and Hefte's pick of the the Quail Valley Farms' Spring of '19 calf crop who is currently the #4 marbling cow on the trait leader list. Hefte Ranch is also offering maternal sibs to this lot. We certainly believe that this young bull is a candidate to cover heifers due to his Top 1% BW EPD.

LOT 87



**SR AN ROOSEVELT 2101**



20210161 • 2101 • 1/7/2021 • Polled • Bull

SR GENESIS 75/3	LJV MASON 0/72	
<b>SR GENUINE 69/6</b>	SR ARKOMA 30/0	<b>Bal Idx</b>
20164735	RDF SANCHO'S NEVER BEFORE 1136	50%
	SR HOLLY 033	<b>C/C Idx</b>
SR HOLLY T19 (ET)	SR GENESIS 75/3	65%
	SR HOLLY T19 (ET)	<b>Term Idx</b>
SR GENUINE 69/6		40%
<b>SR 99/18</b>		
20185092	LJV 2/94	
RED DOC WAGON TRAIN 4434	RDF 7-236	

	BW	WW	YW	MILK	TM	SC	HCW	REA	MARB	FT
EPDs	0.1	6	15	-2	5	0.51	5	0.15	0.00	0.01
Acc	.14	.17	.12	.08	--	.06	.06	.11	.15	.15
%Rank	60%	55%	35%	70%	65%	20%	15%	10%	50%	85%

SR AN Roosevelt 2101 was raised by Arden Strait. He is sired by the SR Genuine 69/6 bull and out of a SR Genuine 69/6 daughter that goes back to Red Doc Farms genetics. 2101's EPD profile is highlighted by his Top 10% REA EPD and Top 15% HP & CW EPDs.

LOT 88







### SR IMPACT 748/J



20211223 • 748/J • 2/4/2021 • Horned • Bull

HARRIS 257/4	AJH 126/0	Bal Idx 35%
	HARRIS FARMS 037/2	
<b>SR IMPACT 30/F2</b>	MR WINROCK N127	C/C Idx 60%
20180821	PERNER D 931	
SR ARKOMA 30/0	A-1 OUTSIDER 5261	Term Idx 20%
IRON OAKS OUTSIDER	IO 4J	
<b>SR 802</b>	DIAMOND S RANGER 146	
20180857	MISS GRANDVIEW 748	
C-P MISS 146 748 C 8		

	BW	WW	YW	MILK	TM	SC	HCW	REA	MARB	FT
EPDs	-1.3	2	4	-1	4	0.48	-4	-0.01	0.22	0.01
Acc	.18	.28	.19	.09	--	.03	.09	.18	.28	.30
%Rank	5%	75%	65%	60%	75%	25%	55%	60%	10%	60%

SR MPact 748/J is son of the SR MPact 30/F2 bull that sold to Vesper Ranch for \$46,000 and out of a granddaughter of the Grandview 748 donor cow that did well for Pitchford Cattle Co. 748/J's dam, 802, has a 344 day average calving interval after 3 calves. 748/J's EPD profile is highlighted by his Top 5% BW and Top 10% MB EPD.

LOT 89



### SR IMPACT 116/H



20207541 • 116/H • 10/26/2020 • Horned • Bull

HARRIS 257/4	AJH 126/0	Bal Idx 65%
	HARRIS FARMS 037/2	
<b>SR IMPACT 30/F2</b>	MR WINROCK N127	C/C Idx 65%
20180821	PERNER D 931	
SR ARKOMA 30/0	CHAPS 372	Term Idx 65%
AJH 126/0	DOUBLE E 8T39	
<b>HEFTE RANCH F116</b>	SJ TANKER 818	
20175372	CRISTI 73/07	
HEFTE RANCH A78		

	BW	WW	YW	MILK	TM	SC	HCW	REA	MARB	FT
EPDs	-1.1	2	-1	0	5	0.40	-8	-0.09	0.05	0.02
Acc	.17	.35	.24	.12	--	.05	.11	.22	.33	.36
%Rank	10%	75%	80%	45%	65%	45%	85%	90%	30%	95%

SR MPact 116/H is an eye catching bull sired by the SR MPact 30/F2 bull out of the Hefte Ranch F116 cow, an AJH 126/0 daughter. F116 has a 391 average calving interval after 3 calves. We really like the fact that this bull is linebred 126/0.

LOT 90



### SR 101 PROOF 25/H



20207550 • 25/H • 9/19/2020 • Polled • Bull

36/3	JHL JOSEPH 049	Bal Idx 10%
	HINNANT-FULBRIGHT 9/153	
<b>RED DOC 101 PROOF ET 6101</b>	RED DOC MULTIPLE SIRE MS	C/C Idx 15%
20164152	RED DOC MULTIPLE DAM MD	
RDF 9375	KILGORE 45/7	Term Idx 15%
HB 35-14	H&B RUBY 03	
<b>SR F02</b>	RED DOC 2458	
20181938	KILGORE 20/3	
KILGORE 20/6		

	BW	WW	YW	MILK	TM	SC	HCW	REA	MARB	FT
EPDs	-0.7	22	21	-1	14	0.39	4	0.04	0.04	-0.01
Acc	.14	.31	.07	.11	--	.01	.05	.08	.10	.11
%Rank	30%	10%	20%	60%	10%	45%	20%	40%	35%	20%

SR 101 Proof 25/H is sired by the Red Doc 101 Proof bull that we have used in our AI program and out of a Kilgore bred female SR F02. SR F02 has a 399 day calving interval after 2 calves. This bull has 7 EPDs ranking in the Top 35%.

LOT 91







### PINNACLE 356/9-2



20210182 • 356/9-2 • 3/15/2021 • Polled • Bull

RED DOC DINERO 4088	KR 189/11	Bal Idx 15%
CA/RDF MATEO 7238	RDF BONITA 8017	
20174206	HF FRED 390/1	C/C Idx 30%
RED DOC 4009	RDF 9177	
CONNOR CREEK 16/1	BRIGGS 065/4	Term Idx 10%
PINNACLE 356/9	HARRIS FARMS T031/5 (ET) T031/5	
20192482	HARRIS FARMS 56/3	
HARRIS FARMS 62/6	HARRIS FARMS 23/3	

	BW	WW	YW	MILK	TM	SC	HCW	REA	MARB	FT
EPDs	0.1	18	27	-5	8	0.36	3	0.03	0.13	-0.01
Acc	.17	.35	.22	.12	--	.02	.11	.20	.32	.35
%Rank	60%	15%	10%	95%	45%	60%	20%	40%	20%	20%

Pinnacle 356/9-2 is a son of Mateo 7238 out of a Pinnacle cow with Briggs and Harris breeding. His dam 356/9 has a 385 day calving interval after 2 calves. He currently has 7 EPDs that rank in the Top 40%.

LOT 92



### SR MPACT 4/H



20207559 • 4/H • 11/9/2020 • Horned • Bull

HARRIS 257/4	AJH 126/0	Bal Idx 35%
SR MPACT 30/F2	HARRIS FARMS 037/2	
20180821	MR WINROCK N127	C/C Idx 40%
SR ARKOMA 30/0	PERNER D 931	
PS CADDO 201-7	SF PLAYER 33/0	Term Idx 35%
SR 63/1	WENDT 7706	
201101005622	KR RICARDO 182/02	
SR 447 (ET) 447	LAZY LINE 4/4	

	BW	WW	YW	MILK	TM	SC	HCW	REA	MARB	FT
EPDs	-1.5	0	-4	4	8	0.35	-5	-0.05	0.21	-0.01
Acc	.17	.36	.22	.16	--	.05	.11	.21	.33	.35
%Rank	3%	80%	90%	10%	45%	60%	65%	75%	10%	20%

SR M pact 4/H is another SR M pact 30/F2 son and out of a PS Caddo daughter, SR 63/1, who has a 355 day average calving interval after 9 calves. 4/H has 5 EPDs that rank in the Top 30% highlighted by a Top 3% BW EPD.

LOT 93



### SR MPACT 667/H



20207579 • 667/H • 11/4/2020 • Horned • Bull

HARRIS 257/4	AJH 126/0	Bal Idx 35%
SR MPACT 30/F2	HARRIS FARMS 037/2	
20180821	MR WINROCK N127	C/C Idx 50%
SR ARKOMA 30/0	PERNER D 931	
RED DOC SANCHO ET 3307	RDF SANCHO 7-216	Term Idx 25%
7/667	OLIVAREZ RANCHES 1/921	
20171681	OLIVAREZ RANCH 7/281	
OLIVAREZ 418	OLIVAREZ RANCH 5/164	

	BW	WW	YW	MILK	TM	SC	HCW	REA	MARB	FT
EPDs	-1.3	0	5	2	6	0.43	-2	-0.06	0.17	-0.01
Acc	.14	.34	.21	.12	--	.04	.10	.19	.30	.33
%Rank	5%	80%	65%	25%	60%	35%	45%	80%	15%	20%

SR MPact 667/H is a SR M pact 30/F2 son out of a Sancho/Olivarez bred cow. 667/H has 6 EPDs that rank in the Top 35% highlighted by a Top 5% BW EPD.





**95** HEFTE TOWNSEND 2121 THE PATRIOT **GGP**

20211642 • 2121 • 1/2/2021 • Polled • Bull

RED DOC 3162	RDF QUIEN SABE 0120	Bal Idx 20%
	RDF 5-27	
GI-GI 366	JP COUCH 118C	C/C Idx 35%
	DOUBLE G 166	
RDF SANCHO'S NEVER BEFORE	RDF SANCHO 7-216	Term Idx 10%
1136	CA3194	
SR 39/2	SR 960	
	WELDER 3/301	

	BW	WW	YW	MILK	TM	SC	HCW	REA	MARB	FT
EPDs	-0.9	18	21	-1	12	0.43	9	0.13	0.07	0.00
Acc	.14	.17	.10	.11	--	.04	.05	.09	.12	.13
%Rank	20%	15%	20%	60%	20%	35%	10%	15%	30%	60%

He's got a pedigree full of proven genetics, but Hefte Townsend 2121 The Patriot is a bull you need to see in person to fully appreciate. He is a long bodied, moderate bull loaded with high quality beef. Scanning a 16.19 REA along with a 5.2 %IMF he combines two traits that don't always go hand in hand. Patriot is smooth on the walk and adds plenty of style to top it off. For those of you who like a bull that is easy to handle, Patriot was halter broke as a calf and is still gentle as a puppy.

**Hefte Ranch & Townsend Cattle Company will retain a semen interest for "in herd" use, all marketable semen rights go to the buyer**

Adj BW 70 lbs, Adj WW 718 lbs, Adj YW 1176, %IMF 5.2

LOT 95



**96** HEFTE 5J'S JACK OF ALL TRAITS 05/20 **GGP**

20202755 • 05/20 • 10/5/2020 • Polled • Bull

KR CATALYST 531/15	KR 225/10	Bal Idx 20%
	KR 310/12 2Y0	
SR HOLLY T19 (ET)	RDF SANCHO'S NEVER BEFORE 1136	C/C Idx 15%
	SR HOLLY 033	
HARCO 1323	HARCO T956 (ET) T956	Term Idx 30%
	HARCO T720 (ET) T720	
HARRIS FARMS 2/0	QT SHERMAN TANK (ET) 03/4	
	HARCO T027/6 (ET) T027/6	

	BW	WW	YW	MILK	TM	SC	HCW	REA	MARB	FT
EPDs	0.4	12	14	-4	6	0.40	2	0.11	0.11	0.01
Acc	.15	.17	.12	.10	--	.05	.05	.11	.14	.15
%Rank	75%	35%	35%	90%	60%	45%	25%	20%	20%	85%

Jack of All Traits 05/20 has a great pedigree and very balanced epds. He is truly a product of the 2019 Strait Hefte Tried & True Sale. His dam Hefte Ranch F36 was purchased by Jack Standley at that sale and has been an extremely productive cow boasting a 378 calving interval with three exceptional calves produced so far. 5J's Beef and Cattle purchased his sire, SR 19/ F1 at the same sale from Strait Ranches. Don't miss out on this deep-bodied moderate bull, he brings with him strong fertility and rare combination of genetics.

**Selling 100% Semen Interest & Full Possession**

Adj BW 71 lbs, Adj WW 793 lbs.

LOT 96



**97** HEFTE RANCH J158 **GGP**

20215492 • J158 • 3/12/2021 • Polled • Bull

KR 191/13	KR 97/10	Bal Idx 45%
	KR 517/04 1A	
HEFTE W24	PG 510-6	C/C Idx 35%
	OLIVAREZ RANCHES 880	
LMR DANDY 024	WENDT 6788	Term Idx 50%
	LMR LEAH 314	
HARCO T027/6 (ET) T027/6	KR RICARDO 182/02	
	LA NINA 004/0	

	BW	WW	YW	MILK	TM	SC	HCW	REA	MARB	FT
EPDs	0.3	8	2	-5	3	0.26	-8	-0.09	0.09	-0.01
Acc	.12	.30	.19	.15	--	.03	.09	.18	.28	.31
%Rank	70%	50%	75%	95%	80%	90%	85%	90%	25%	20%

A Hefte Ranch G18 son with impressive performance. He ratioed 111 on IMF and had a 1.2 REA/cwt. His dam, Hefte Ranch C42, goes back to Harris T027/6 and has a 398 day calving interval after 5 calves. This bull brings modern performance and style with an older, proven pedigree. Dig into this bull for a minute and you will appreciate him more and more.

**Selling 100% Semen Interest & Full Possession**

%IMF 4.8, Fat Thickness .21, SC 36 cm

LOT 97





### LOT 98 - HEFTE RANCH J114 ET

Hefte Ranch D25 crossed with Harris Guns Up 253F14. Take a look at those EPDs! He carries a ton of meat and performance, and yet he is a very docile bull. He has stood out since the day he was born and never looked back. If you want to produce pounds of beef, J114 is your bull.



LOT 98

**HEFTE RANCH J114 ET**  
20207438 • J114 • 10/21/2020 • Scurred • Bull

<p>HARCO 1323</p> <p><b>HEFTE RANCH D25</b> 20160227</p> <p>HEFTE RANCH A88</p> <p>HARRIS GUNS UP 216/5</p> <p><b>HARRIS GUNS UP 253F14</b> 20185697</p> <p>HARCO T607 (ET) T607</p>	<p>HARCO T956 (ET) T956 HARCO T720 (ET) T720</p> <p>SJ TANKER 818 MANITOU IV 54/07 FC PISTOL 28/0 HINNANT-FULBRIGHT 9/153</p> <p>KR RICARDO 182/02 MISS WINROCK M253</p>	<p><b>Bal Idx</b> 10%</p> <p><b>C/C Idx</b> 5%</p> <p><b>Term Idx</b> 10%</p>
--	--	---

	BW	WW	YW	MILK	TM	SC	HCW	REA	MARB	FT
EPDs	0.1	25	29	2	19	0.43	9	0.18	0.08	0.02
Acc	.18	.23	.18	.12	--	.08	.08	.17	.21	.22
%Rank	60%	5%	10%	25%	2%	35%	10%	10%	25%	95%

Hefte Ranch will retain a semen interest for "in herd" use, all marketable semen rights go to the buyer  
8 traits in the top 25%, BW 78 lbs, Adj WW 649 lbs, Adj YW 1261 lbs, SC 38.5 cm

**HEFTE RANCH J149 ET**  
20215486 • J149 • 3/10/2021 • Polled • Bull

<p>HARCO 1323</p> <p><b>HEFTE RANCH D25</b> 20160227</p> <p>HEFTE RANCH A88</p> <p>SJ 5/D10 (ET) 5/D10</p> <p><b>MIRA X58</b> 1286799</p> <p>HEFTE RANCH 632</p>	<p>HARCO T956 (ET) T956 HARCO T720 (ET) T720</p> <p>SJ TANKER 818 MANITOU IV 54/07 WENDT 5823 WENDT 7515</p> <p>WENDT 5821 KATHRYN RUTH HEFTE 931</p>	<p><b>Bal Idx</b> 30%</p> <p><b>C/C Idx</b> 20%</p> <p><b>Term Idx</b> 40%</p>
--	---	--

	BW	WW	YW	MILK	TM	SC	HCW	REA	MARB	FT
EPDs	0.8	16	25	3	15	0.41	4	0.08	-0.11	0.02
Acc	.14	.23	.17	.16	--	.07	.07	.16	.21	.22
%Rank	85%	20%	15%	15%	10%	40%	20%	25%	90%	95%

Selling 100% Semen Interest & Full Possession  
%IMF 5.4, REA 15.35, Adj YW 1194, SC 35 cm

### LOT 99 - HEFTE RANCH J149 ET

An ET calf produced by combining Hefte Ranch D25 and Hefte Ranch Mira X58. D25 has made a name for himself producing beautiful replacement females, X58 is an old show heifer that combines performance and good looks. Take note of his 5.5 IMF and 1.19 REA/cwt. He is as gentle as they come, dark red, deep-bodied and free moving. This bull will add plenty of growth and performance to your program.



LOT 99



100

**HEFTE RANCH J65**

GGP

20212151 • J65 • 2/11/2021 • Horned • Bull

RED DOC 3162	RDF QUIEN SABE 0120	Bal Idx 15%
	RDF 5-27	
<b>HEFTE RANCH F39</b>	LMR DANDY 024	C/C Idx 10%
20175288	HEFTE W03	
KR 191/13	KR 97/10	Term Idx 20%
	KR 517/04 1A	
<b>HEFTE RANCH G74 ET</b>	C3 19	
20195938	HEFTE W82	

	BW	WW	YW	MILK	TM	SC	HCW	REA	MARB	FT
EPDs	0.5	17	11	-1	11	0.46	-2	0.07	0.19	-0.01
Acc	.29	.33	.22	.11	--	.06	.10	.19	.31	.33
%Rank	75%	20%	45%	60%	25%	30%	45%	30%	10%	20%

This bull is the first calf out of Hefte Ranch G74 ET, a young cow which combines the very best genetics our herd has to offer. Fertility in this line is outstanding, performance is proven, and phenotype is sound. On his sire's side of the pedigree, his grand dam won the overall female award for carcass and feed efficiency at the first GDC GrowSafe test. You will find a very balanced EPD set on this young sire.

**Hefte Ranch will retain a semen interest for "in herd" use, all marketable semen rights go to the buyer**

Adj WW 631 lbs, Adj YW 1127 lbs, 1.21 REA/cwt, SC 38 cm



LOT 100

101

**HEFTE RANCH J147**

GGP

20212094 • J147 • 3/25/2021 • Polled • Bull

KR 97/10	RDF 8052	Bal Idx 35%
	KR N2/5 4A	
<b>KR 191/13</b>	FIVE OAKS 29/0	C/C Idx 35%
20131196	KR 70/0	
KR 517/04 1A	CHAPS 372	Term Idx 35%
	DOUBLE E 8T39	
AJH 126/0	SJ TANKER 818	
<b>HEFTE RANCH F126</b>	HEFTE 757	
20175369	HEFTE RANCH A62	

	BW	WW	YW	MILK	TM	SC	HCW	REA	MARB	FT
EPDs	0.1	7	4	-5	2	0.29	-7	-0.02	0.20	-0.01
Acc	.17	.31	.25	.19	--	.12	.12	.24	.32	.34
%Rank	60%	55%	65%	95%	85%	85%	80%	65%	10%	20%

Dark cherry red, smooth polled, great sheath. Not to mention 5.8 %IMF! J147 was our high scanning bull for Marbling this year, but he is not just carcass. With an adjusted WW of 765 Lbs he will bring weight and natural muscling to the table as well. As KR 191/13 is a trait leader for both Heifer Preg and Breed Back, this son should pass on great maternal genetics as well.

**Selling 100% Semen Interest & Full Possession**

Adj WW 765 lbs, Adj YW 1145, 5.8 %IMF, SC 34 cm



LOT 101

102

**HEFTE RANCH J74**

GGP

20212248 • J74 • 2/28/2021 • Scurred • Bull

KR 191/13	KR 97/10	Bal Idx 30%
	KR 517/04 1A	
<b>HEFTE RANCH G42</b>	AJH 126/0	C/C Idx 20%
20187272	HEFTE RANCH Z00 BABY Z00	
HEFTE RANCH B18	HARCO 1323	Term Idx 40%
HEFTE RANCH D25	HEFTE RANCH A88	
<b>HEFTE RANCH G34</b>	RPV 7/0 RPV7/0	
20191491	LIZZY 54/06	
HEFTE RANCH A43		

	BW	WW	YW	MILK	TM	SC	HCW	REA	MARB	FT
EPDs	1.2	18	23	-4	9	0.43	2	0.08	-0.02	0.02
Acc	.28	.32	.14	.10	--	.06	.07	.13	.17	.18
%Rank	95%	15%	15%	90%	35%	35%	25%	25%	55%	95%

We combined our youngest genetics in this bull and it paid off. J74 brings together two of our successful sire lines, Hefte Ranch D25 and KR 191/13. He has a solid pedigree backed by cool phenotype and a very balanced set of EPDs. He's not the biggest bull in the pen, but he sure makes an impression.

**Selling 100% Semen Interest & Full Possession**

Adj WW 590 lbs, Adj YW 1060 lbs, SC 33 cm



LOT 102



103

**HEFTE RANCH J49**



20207512 • J49 • 10/27/2020 • Scurred • Bull

HARCO 1323	HARCO T956 (ET) T956	<b>Bal Idx</b> 40%
	HARCO T720 (ET) T720	
<b>HEFTE RANCH D25</b>		<b>C/C Idx</b> 15%
20160227	SJ TANKER 818	
HEFTE RANCH A88	MANITOU IV 54/07	<b>Term Idx</b> 85%
B14	AJH 126/0	
	HEFTE RANCH 804	
<b>B14 BRIGGS 037D4</b>		
20166671	BRIGGS 631/5	
BRIGGS 573/12	BRIGGS 037/3	

	BW	WW	YW	MILK	TM	SC	HCW	REA	MARB	FT
EPDs	0.8	8	7	2	10	0.39	-7	-0.05	-0.03	0.03
Acc	.15	.35	.24	.14	--	.08	.11	.22	.32	.34
%Rank	85%	50%	55%	25%	30%	45%	80%	75%	60%	>95%

Here is a stout, clean made Hefte Ranch D25 son. His dam, B14 Briggs 037D4 is a moderate, easy keeping, eye-appealing heifer we purchased at the 2017 TriStar Sale and we are sure happy to have her. This gentle bull has great testicular development and is all bull when the ladies are near. He has been ready to breed from a very early age.

**Selling 100% Semen Interest & Full Possession**

Top 5% HP, top 15% BB, SC 41 cm

LOT 103



104

**HEFTE RANCH J101**



20212101 • J101 • 1/24/2021 • Horned • Bull

KR 191/13	KR 97/10	<b>Bal Idx</b> 60%
	KR 517/04 1A	
<b>HEFTE RANCH G70</b>		<b>C/C Idx</b> 55%
20191558	ROSE HILL SAM HOUSTON 831	
HEFTE RANCH D122	MUSCLES W53	<b>Term Idx</b> 65%
RPV 7/0 RPV7/0	FIVE OAKS 74	
	RPV 60/4	
<b>HEFTE D139ET</b>		
20158520	DUNLAP HARPER 74/08	
LIZZY 54/06	LIZ 07/02	

	BW	WW	YW	MILK	TM	SC	HCW	REA	MARB	FT
EPDs	-0.4	-1	-3	-4	-1	0.48	-7	-0.04	0.09	-0.01
Acc	.13	.28	.10	.13	--	.05	.06	.10	.13	.14
%Rank	45%	85%	85%	90%	>95%	25%	80%	70%	25%	20%

One of two sons of Hefte Ranch G70 Final Draft in today's sale, G101 is full of depth and guts. His dam is Hefte Ranch D139ET who goes back to our Dunlap Harper bloodlines and posts a 388 day calving interval with 5 calves produced.

**Selling 100% Semen Interest & Full Possession**

Top 15% HP, top 20% BB, SC 33 cm

HEFTE RANCH G70 FINAL DRAFT  
SIRE OF LOT 104



105

**SR MATEO 062/J**



20211299 • 062/J • 4/4/2021 • Polled • Bull

RED DOC DINERO 4088	KER 189/11	<b>Bal Idx</b> 10%
	RDF BONITA 8017	
<b>CA/RDF MATEO 7238</b>		<b>C/C Idx</b> 20%
20174206	HF FRED 390/1	
RED DOC 4009	RDF 9177	<b>Term Idx</b> 10%
DB 121/7	HARRIS FARMS 56/3	
	PG/H ALLSTAR 231-A1 (ET) 231-A1	
<b>CA 062</b>		
20186890	WENDT 8077	
WENDT 829	WENDT 9689	

	BW	WW	YW	MILK	TM	SC	HCW	REA	MARB	FT
EPDs	-1.0	23	20	-6	9	0.28	4	0.15	0.18	0.02
Acc	.17	.35	.22	.11	--	.02	.11	.20	.32	.35
%Rank	15%	10%	20%	>95%	35%	85%	20%	10%	10%	95%

SR Mateo 062/J is a Mateo 7238 son out of a Corporn bred cow with Harris and Wendt genetics. His dam, 062, has a 393 day calving interval after 2 calves. 062/J has 6 EPDs ranking in the top 35% highlighted by Top 10% WW, REA & MB EPDs.

CA/RDF MATEO 7238  
SIRE OF LOT 105







### SR MPACT 869/J2

20211238 • 869/J2 • 2/13/2021 • Horned • Bull



HARRIS 257/4  
 SR MPACT 30/F2  
 20180821  
 SR ARKOMA 30/0  
 KR CATALYST 531/15  
 SR 29/18  
 20180850  
 SR 869

AJH 126/0  
 HARRIS FARMS 037/2  
 MR WINROCK N127  
 PERNER D 931  
 KR 225/10  
 KR 310/12 2Y0  
 SR 538  
 MISS DOUBLE TT 230

Bal Idx 10%  
 C/C Idx 10%  
 Term Idx 15%

	BW	WW	YW	MILK	TM	SC	HCW	REA	MARB	FT
EPDs	-0.9	8	6	-4	3	0.47	-4	-0.03	0.34	-0.01
Acc	.17	.36	.25	.13	--	.06	.11	.23	.35	.38
%Rank	20%	50%	60%	90%	80%	25%	55%	65%	3%	20%

SR MPact 869/J2 is sired by the SR MPact 30/F2 bull and out of a KR Catalyst 531/15 daughter, SR 29/18, who is also in this sale. 29/18 has a 360 day average calving interval after 3 calves. 869/J2 currently has 6 EPDs that rank in the Top 25%.



### SR MPACT 600/J

20211177 • 600/J • 3/13/2021 • Horned • Bull



HARRIS 257/4  
 SR MPACT 30/F2  
 20180821  
 SR ARKOMA 30/0  
 HEFTE RANCH D59  
 SIMONA  
 20181536  
 SCHUSTER 600/1

AJH 126/0  
 HARRIS FARMS 037/2  
 MR WINROCK N127  
 PERNER D 931  
 AJH 126/0  
 CA 12/8  
 SJ GLADIATOR 128  
 SCHUSTER 910-0

Bal Idx 25%  
 C/C Idx 55%  
 Term Idx 10%

	BW	WW	YW	MILK	TM	SC	HCW	REA	MARB	FT
EPDs	-1.5	1	5	0	4	0.37	0	0.03	0.34	-0.01
Acc	.17	.34	.24	.12	--	.05	.11	.22	.34	.37
%Rank	3%	80%	65%	45%	75%	55%	35%	40%	3%	20%

SR MPact 600/J is another SR MPact 30/F2 son and out of a young Korban cow, 5DB. The 5DB cow could be a donor in our program soon due to her consistent production of high quality calves and 343 day average calving interval after 3 calves. 600/J has 6 EPDs that rank in the Top 40% including a Top 3% MB EPD.



### SR MPACT 57/J

20211174 • 57/J • 2/20/2021 • Horned • Bull



HARRIS 257/4  
 SR MPACT 30/F2  
 20180821  
 SR ARKOMA 30/0  
 BA NITRO 025/0 ET T025/0  
 PC/NTR MISS NITRO 57/7  
 20176452  
 NTR HARPER 51-8

AJH 126/0  
 HARRIS FARMS 037/2  
 MR WINROCK N127  
 PERNER D 931  
 DENOMINATOR 147/6  
 NAVIDAD RANCH NR607  
 HARRIS FARMS 37/3  
 NTR VIVIAN 49-4

Bal Idx 10%  
 C/C Idx 10%  
 Term Idx 10%

	BW	WW	YW	MILK	TM	SC	HCW	REA	MARB	FT
EPDs	-0.7	17	21	0	13	0.40	5	0.09	0.13	0.00
Acc	.16	.33	.22	.12	--	.04	.10	.20	.32	.36
%Rank	30%	20%	20%	45%	15%	45%	15%	25%	20%	60%

SR MPact 57/J is a SR MPact 30/F2 son out of In The Red cow, 57/7 has an average calving interval of 373 days after 3 calves. 57/J has 8 EPDs in the Top 25% combined with excellent WW and YW ratios of 116% and 109% respectively.



### SR CATALYST 613/J4

20211188 • 613/J4 • 2/16/2021 • Polled • Bull



KR 225/10  
 KR CATALYST 531/15  
 20153484  
 KR 310/12 2Y0  
 LJV MASON 0/72  
 SR 3/4  
 20141919  
 SR 837

KR 230/08  
 KR 328/5 (ET) 328/5 F2  
 KR 56/10  
 KR 15/09 F1  
 SR 710  
 LJV DOLLY 8/48  
 SR 444  
 SR 613

Bal Idx 3%  
 C/C Idx 1%  
 Term Idx 20%

	BW	WW	YW	MILK	TM	SC	HCW	REA	MARB	FT
EPDs	0.3	19	18	-8	5	0.54	2	0.21	0.25	0.06
Acc	.19	.37	.27	.22	--	.12	.13	.25	.36	.39
%Rank	70%	15%	25%	>95%	65%	15%	25%	5%	5%	>95%

SR Catalyst 613/J4 is a KR Catalyst son out of the SR 3/4 cow who is out of our long time donor SR 837. SR 3/4 has a 359 average calving interval after 7 calves. 613/J4 has 8 traits that rank in the Top 25% including a great combination of Top 5% REA & MB.



### SR CATALYST 10/J2

20211072 • 10/J2 • 3/8/2021 • Horned • Bull



KR 225/10  
 KR CATALYST 531/15  
 20153484  
 KR 310/12 2Y0  
 SR GENESIS 75/3  
 SR 42/18  
 20180860  
 SR 17/5

KR 230/08  
 KR 328/5 (ET) 328/5 F2  
 KR 56/10  
 KR 15/09 F1  
 LJV MASON 0/72  
 SR ARKOMA 30/0  
 LJV MASON 0/72  
 SR 10.0 10/0

Bal Idx 1%  
 C/C Idx 1%  
 Term Idx 5%

	BW	WW	YW	MILK	TM	SC	HCW	REA	MARB	FT
EPDs	-0.3	15	23	-10	1	0.71	5	0.14	0.32	0.01
Acc	.18	.37	.26	.19	--	.12	.12	.25	.36	.38
%Rank	50%	25%	15%	>95%	90%	2%	15%	15%	3%	85%

SR Catalyst 10/J2 is a son of the KR Catalyst 531/15 bull out of the SR 42/18 cow who has been a great producer for us. SR 42/18 has a 393 day average calving after 3 calves. 10/J2 had 103% IMF ratio and 104% Ribeye Area ratio at scan. He has a balanced EPD profile with 8 EPDs ranking in the Top 25%.



### SR CATALYST 777/J

20211227 • 777/J • 2/26/2021 • Horned • Bull



KR 225/10  
 KR CATALYST 531/15  
 20153484  
 KR 310/12 2Y0  
 AJH 12/0  
 SR 41/4  
 20141945  
 WELDER 5/276

KR 230/08  
 KR 328/5 (ET) 328/5 F2  
 KR 56/10  
 KR 15/09 F1  
 QT SHERMAN TANK (ET) 03/4  
 T.G. TOPANGA 450  
 P H WELDER 9/319  
 WELDER 2/777

Bal Idx 10%  
 C/C Idx 2%  
 Term Idx 30%

	BW	WW	YW	MILK	TM	SC	HCW	REA	MARB	FT
EPDs	0.7	17	17	-8	4	0.56	-1	0.08	0.19	0.06
Acc	.18	.37	.25	.19	--	.11	.12	.24	.35	.38
%Rank	85%	20%	30%	>95%	75%	10%	40%	25%	10%	>95%

SR Catalyst 777/J is a KR Catalyst 531/15 son out of AJH 12/0 sired cow, SR 41/4. SR 41/4's pedigree was heavily influenced by Pat Welder Ranch genetics. 777/J currently has 8 EPD's that rank in the Top 40%.







### SR WICKHAM 25/J3

20211117 • 25/J3 • 3/20/2021 • Horned • Bull



#### SR 87/7

20171842

KR CATALYST 531/15

CTF QUIEN SABE'S BEAUTY

RED DOC 2458

#### KILGORE 20/6

20162176

KILGORE 20/3

KR 225/10  
KR 310/12 2YO

RED DOC 3150

RED DOC 3227

RED DOC MULTIPLE SIRE MS

RED DOC MULTIPLE DAM MD

CHEEKS 2/4/0

KILGORE 25/0

BalIdx  
10%

C/CIdx  
3%

TermIdx  
20%

	BW	WW	YW	MILK	TM	SC	HCW	REA	MARB	FT
EPDs	-0.6	18	11	-2	11	0.59	0	0.07	0.15	0.00
Acc	.13	.34	.17	.11	--	.04	.09	.16	.27	.30
%Rank	35%	15%	45%	70%	25%	10%	35%	30%	15%	60%

SR Wickham 25/J3 is a SR 87/7 "Wickham" son out of a Kilgore bred cow. 25/J3 has 9 EPDs that rank in the Top 35% and nicely balances maternal and carcass traits.



### SR FUSION 30/J12

20211126 • 30/J12 • 4/6/2021 • Horned • Bull



#### SR FUSION 102/18

20185091

KR CATALYST 531/15

HARRIS 1322

HARRIS 257/4

#### SR 30/F8

20181922

SR ARKOMA 30/0

KR 225/10  
KR 310/12 2YO

HARCO T958 (ET) T958

T068/6

AJH 126/0

HARRIS FARMS 037/2

MR WINROCK N127

PERNER D 931

BalIdx  
10%

C/CIdx  
4%

TermIdx  
20%

	BW	WW	YW	MILK	TM	SC	HCW	REA	MARB	FT
EPDs	-0.5	14	12	-4	6	0.56	3	0.18	0.18	0.01
Acc	.12	.33	.22	.13	--	.06	.10	.20	.33	.36
%Rank	40%	25%	40%	90%	60%	10%	20%	10%	10%	85%

SR Fusion 30/J12 is a genetic goldmine as he combines KR Catalyst 531/15, Harris 1322, Harris 257 and SR Arkoma 30/0. 30/J12's dam, 30/F8, is a full sister to the SR Mpat 30/F2 bull and has a 343 day average calving interval after 3 calves. 30/J12 has 9 EPDs that rank in the Top 40% highlighted by a Top 10% SC, HP, REA & MB.



### SR GENESIS 368/H

20207558 • 368/H • 11/23/2020 • Horned • Bull



#### SR GENESIS 75/3

20132516

LJV MASON 0/72

SR ARKOMA 30/0

LJV MASON 0/72

#### 3S2E MARLA 368D2 (ET)

20164630

MC DARLA 368/1

SR 710

LJV DOLLY 8/48

MR WINROCK N127

PERNER D 931

SR 710

LJV DOLLY 8/48

NG LEGEND 100

ROLLING OAKS DAISY 368

BalIdx  
15%

C/CIdx  
15%

TermIdx  
20%

	BW	WW	YW	MILK	TM	SC	HCW	REA	MARB	FT
EPDs	-0.1	15	25	-2	9	0.59	5	0.11	0.04	0.02
Acc	.20	.35	.24	.18	--	.11	.12	.23	.32	.34
%Rank	55%	25%	15%	70%	35%	10%	15%	20%	35%	85%

SR Genesis 368/H is a SR Genesis 75/3 son out of the 3S2E Marla 368D2 (ET) cow that we bought from Scott Sonntag at the Houston Super Sale many years ago. The 368D2 cow has a 387 average calving interval after 4 calves. We sold a maternal brother to 368/H, SR Sendero 125/19, to Triple P Ranch last year. This bull currently has 8 EPDs ranking in the Top 35%.



### SR 27/6 702/J

20211214 • 702/J • 3/6/2021 • Horned • Bull



#### SR 27/6

20164694

LJV MASON 0/72

SR ARKOMA 30/0

RED DOC RED WAGON 3264

#### MC 702

20177146

MC 503

SR 710

LJV DOLLY 8/48

MR WINROCK N127

PERNER D 931

KR 189/11

OLIVAREZ RANCHES 1-916

MC 423

MC TINA 423

BalIdx  
50%

C/CIdx  
50%

TermIdx  
50%

	BW	WW	YW	MILK	TM	SC	HCW	REA	MARB	FT
EPDs	-1.8	-3	-2	0	2	0.54	-2	0.03	0.00	-0.01
Acc	.16	.33	.22	.12	--	.05	.11	.20	.32	.35
%Rank	2%	90%	85%	45%	85%	15%	45%	40%	50%	20%

SR 27/6 702/J is sired by the SR 27/6 bull and out of the MC 702 cow that we bought from MC Ranch at the Nu-Gen Sale at Wendt Ranch. The MC 702 cow is daughter of the Red Doc Red Wagon bull and has her third calf at side now



### SR 90/5 7234/J

20211217 • 7234/J • 4/20/2021 • Horned • Bull



#### SR 90/5

20157838

SR GENESIS 75/3

TF 384

RED DOC DINERO 4088

#### RED DOC 7234

20174121

RED DOC 4030

LJV MASON 0/72

SR ARKOMA 30/0

4B-MR. BILLY RAY 337

TF 407

KR 189/11

RDF BONITA 8017

HF FRED 390/1

RDF 0299

BalIdx  
10%

C/CIdx  
10%

TermIdx  
10%

	BW	WW	YW	MILK	TM	SC	HCW	REA	MARB	FT
EPDs	-0.4	27	28	-2	15	0.50	6	0.16	0.04	0.02
Acc	.18	.35	.22	.14	--	.05	.11	.20	.33	.37
%Rank	45%	3%	10%	70%	10%	20%	15%	10%	35%	85%

SR 90/5 7234/J is sired by SR 90/5, a SR Genesis son, out of the Red Doc 7234 cow, a Dinero 4088 daughter. Red Doc 7234 has 380 day average calving interval after 4 calves. 7234/J has 8 EPDs that rank in the Top 35% highlighted by his Top 3% WW, and Top 10% YW, TM, & REA.



### SR 90/5 770/J

20211226 • 770/J • 4/7/2021 • Horned • Bull



#### SR 90/5

20157838

SR GENESIS 75/3

TF 384

SR T17 (ET)

#### SR 59/18

20180897

P H WELDER 5/770

LJV MASON 0/72

SR ARKOMA 30/0

4B-MR. BILLY RAY 337

TF 407

RDF SANCHO'S NEVER BEFORE 1136

SR HOLLY 033

P H WELDER 7/64

WELDER RANCH 313/2

BalIdx  
45%

C/CIdx  
45%

TermIdx  
45%

	BW	WW	YW	MILK	TM	SC	HCW	REA	MARB	FT
EPDs	-0.4	8	3	0	8	0.52	-4	-0.10	0.07	-0.01
Acc	.13	.34	.21	.13	--	.04	.10	.19	.32	.36
%Rank	45%	50%	70%	45%	45%	15%	55%	95%	30%	20%

SR 90/5 770/J is another SR 90/5, a sire that currently resides at Garza's Double G Farms, son out of the SR 59/18 cow who has a 363 day average calving interval after 3 calves.







**SR 128/6 6468/J**

20211201 • 6468/J • 2/28/2021 • Horned • Bull



**SR 128/6**  
20167254

LJV MASON 0/72

SR T8 (ET)

241/3

**RED DOC 6468**

20167612

RED DOC MULTIPLE DAM MD

SR 710

LJV DOLLY 8/48

HELLACIOUS 750

SR ISABELLA 557

RED ANGUS

BRIGGS 653/10

RED DOC MULTIPLE SIRE MS

RED DOC MULTIPLE DAM MD

**Bal Idx**  
15%

**C/C Idx**  
15%

**Term Idx**  
20%

	BW	WW	YW	MILK	TM	SC	HCW	REA	MARB	FT
EPDs	0.1	22	27	1	15	0.46	7	0.21	-0.05	0.01
Acc	.14	.32	.20	.12	--	.04	.10	.18	.31	.35
%Rank	60%	10%	10%	35%	10%	30%	10%	5%	70%	85%

SR 128/6 6468/J is sired by the young LJV Mason 0/72 son, SR 128/6, that did such a great job for us. We just weaned another excellent calf off of his dam, Red Doc 6468 and previously sold a young herd sire to CF Cattle Co. out of her.

*Reference Sires*



**FC SAVAGE 25/4 ET**

20145451 • 25/4 • 10/14/14 • Scurred • Ref Sire



**CB BEAR 30/2**

2.01201E\*11

QT SHERMAN TANK (ET) 03/4

AJH 113/8

GUNSLINGER 13/5

**FC DUCHESS 32/1**

1296765

BEE 21/4

CB GRIZZLY'S CHUNK 0525

HARRIS FARMS 466

HARCO T155/5 (ET) T155/5

HARRIS FARMS T184/5 (ET) T184/5

WR MAVERICK N113 ET N113

FAYE 10/2

STONE COLD 21/1

GRAY OAKS 950

**Bal Idx**  
60%

**C/C Idx**  
65%

**Term Idx**  
55%

	BW	WW	YW	MILK	TM	SC	HCW	REA	MARB	FT
EPDs	0.9	17	14	2	14	0.35	-4	0.03	-0.08	-0.02
Acc	0.69	0.6	0.33	0.3	--	0.18	0.31	0.3	0.42	0.45
%Rank	80%	25%	45%	30%	20%	60%	60%	45%	75%	10%



**FOUR J FOCUS 19/243**

20187285 • 19/243 • 10/2/18 • Polled • Ref Sire



**FOUR J 14/28**

20133674

FOUR J 10/070

FOUR J 08/116

RED DOC SABE LINDO 3085

**FOUR J 15/324**

20151341

RED DOC 3005

FOUR J 05/193

FOUR J 02/295

SCC 3J30

DOS BROS 166

RDF QUIEN SABE 0120

RDF 5-117

FOUR J 10/070

RED DOC MULTIPLE DAM MD

**Bal Idx**  
65%

**C/C Idx**  
65%

**Term Idx**  
60%

	BW	WW	YW	MILK	TM	SC	HCW	REA	MARB	FT
EPDs	0.8	7	2	1	8	0.31	-8	-0.04	0.17	0
Acc	0.18	0.33	0.13	0.17	--	0	0.07	0.12	0.16	0.17
%Rank	80%	60%	80%	40%	55%	70%	80%	70%	15%	60%



**HARRIS GUNS UP 216/5**

20152716 • 216/5 • 2/6/15 • Horned • Ref Sire



**FC PISTOL 28/0**

1290034

GUNSLINGER 13/5

HOLLY 20/3

SANTA GERTRUDIS MS

**HINNANT-FULBRIGHT 9/153**

20090017

RED ANGUS

WR MAVERICK N113 ET N113

FAYE 10/2

STONE COLD 21/1

COSSEY 13/9

SANTA GERTRUDIS MS

SANTA GERTRUDIS MD

RED ANGUS

RED ANGUS

**Bal Idx**  
30%

**C/C Idx**  
60%

**Term Idx**  
20%

	BW	WW	YW	MILK	TM	SC	HCW	REA	MARB	FT
EPDs	-2	17	19	-3	9	0.65	8	0.17	0.01	0.02
Acc	0.63	0.63	0.48	0.32	--	0.31	0.31	0.44	0.58	0.61
%Rank	2%	25%	35%	80%	45%	15%	15%	15%	40%	95%

*Terms & Conditions*

**BIDDING**

Each animal will be sold to the highest bidder without reserve. The auctioneer will settle any disputes as to bids and his decision on such matters shall be final.

**TERMS**

Each animal becomes the risk of the purchaser as soon as sold, but it shall be the obligation of the seller to see that animals are fed and cared for until loaded for shipment or until Monday, October 17, 2022, whichever occurs sooner.

**CERTIFICATE OF REGISTRY**

A transferred certificate of registry will be furnished to the purchaser for each registered bull or registered female once proper settlement has been made.

**HEALTH**

Health papers for interstate shipment within United States will be provided for all animals.

**ANNOUNCEMENTS**

Any changes from the information of any kind in this catalog will be provided in a sale day supplement sheet or announced from the auction block and such information shall take precedence over cataloged information.

**BREEDING GUARANTEE**

All animals are guaranteed to be breeders with the exception of: a) calves under 12 months of age; b) animals shown by purchaser after sale in which the guarantee (if any) shall be between the seller and the buyer; c) injury or disease occurring after the sale; d) gross negligence or willful misconduct on the part of the purchaser; e) death by any reason.

Any bull which settles cows by natural service and passes a fertility test made by competent veterinarians, mutually agreed upon by the buyer and seller, during any six month period of trial (provided for in paragraph 2 of the section of these sales terms and conditions entitled "Options and Privileges of Return or Adjustment") shall be considered a breeder. All partial interest bulls are guaranteed to produce freezable quality semen.

Safe in calf females have been examined by competent personnel and are so guaranteed. Exposed females have been exposed but are not guaranteed to be safe in calf. Open females have not been served and are so guaranteed.

**PREGNANCY DETERMINATION**

The females in this sale noted safe in calf have been determined pregnant by physical palpation. Our best estimate of service sire will be given in

the case of the females with both an A.I. sire and a natural breeding sire.

**OPTIONS AND PRIVILEGES OF RETURN OR ADJUSTMENT**

All claims for adjustment or refund must be made in writing within six months of the sale date.

In the event an animal is claimed to be a non-breeder, the animal may be returned to the seller if in good condition and complying with the health requirements of Texas. The seller shall be entitled to a six month trial following the return of the animal in which to prove that the animal is a breeder. If at the end of six months the seller is unable to prove the animal is a breeder, the seller shall at the option of the buyer replace the animal with another of equal value or issue a credit for the initial selling price. If the seller proves the animal to be a breeder, it shall be the obligation of the purchaser to take delivery of the animal and pay all expenses incurred for transportation.

If a bull is sold and at a later date proves not to be eligible for registration under association rules, the seller shall be obligated to make a satisfactory adjustment on the purchase price to the buyer, refund the purchase price or issue a credit for the initial selling price upon the return of the animal to the farm of the seller.

If an animal is sold and through DNA is proven to have incorrect parentage as represented by the certificate of registration, and for which the parentage can be determined, the seller shall be obligated to make a satisfactory adjustment on the purchase price to the buyer, refund the purchase price or issue a credit for the initial selling price upon the return of the animal to the farm of the seller.

**RIGHTS AND OBLIGATIONS**

The above terms and conditions of sale shall constitute a contract between the buyer and seller of each animal and shall be equally binding on both. Other than the guarantees and warranties stated above, no other warranties or guarantees are expressed or implied. Each sale or resale of an animal constitutes a separate transaction.

**LIABILITY**

All persons who attend this sale do so at their own risk. The owners or any other person connected with the sale assumes no liability, legal or otherwise.



### HEFTE RANCH D25

20160227 • D25 • 1/23/16 • Horned • Ref Sire



HARCO T956 (ET) T956	PCR AVALANCHE 95/5 (ET) 95/5 MISS WINROCK M253	Bal Idx 20%
<b>HARCO 1323</b> 20132359	WENDT **ALL STAR 5876** 5876 HARCO T142/5 (ET) T142/5	C/C Idx 10%
HARCO T720 (ET) T720	SJ HAWK'S HUMMER 3/H2 SJ LADY MARIE 655	Term Idx 40%
SJ TANKER 818		
<b>HEFTE RANCH A88</b> 20130240	CANYON 70/40 MANITOU III 820/8	

	BW	WW	YW	MILK	TM	SC	HCW	REA	MARB	FT
EPDs	1.6	20	32	6	20	0.42	9	0.22	-0.04	0.03
Acc	0.51	0.71	0.58	0.35	--	0.29	0.33	0.54	0.68	0.71
%Rank	95%	20%	15%	10%	3%	40%	15%	10%	60%	>95%



### HEFTE RANCH F14 TOMCAT

20175282 • F14 • 10/20/17 • Polled • Ref Sire



KR 800/11	RDF 8052 KR 307/06 4B	Bal Idx 2%
<b>KR 921/15</b> 20154201	WAUKARAU GOLD MINE 6151 KR 23/001	C/C Idx 10%
KR 110N/09 110/09 N6	HARCO T956 (ET) T956 HARCO T720 (ET) T720	Term Idx 2%
HARCO 1323		
<b>HEFTE RANCH D140ET</b> 20157775	MR CVF 2022 BRIGGS 046/1	

	BW	WW	YW	MILK	TM	SC	HCW	REA	MARB	FT
EPDs	-1.6	20	27	7	20	0.19	12	0.2	0.46	0.01
Acc	0.53	0.61	0.43	0.28	--	0.24	0.3	0.39	0.54	0.57
%Rank	4%	20%	20%	5%	3%	95%	10%	10%	1%	85%



### HEFTE RANCH F19 PURE SWAGGER

20176891 • F19 • 12/21/17 • Polled • Ref Sire



RDF SANCHO'S NEVER BEFORE 1136	REF SANCHO 7-216 CA3194	Bal Idx 95%
<b>RED DOC NEVER SANK 5012</b> 20153072	O/X 752 RDF 6-169	C/C Idx >95%
RED DOC 3001	DF PLAYBOY 281 C/A 314	Term Idx 75%
ROSE HILL SAM HOUSTON 831		
<b>HEFTE RANCH D93</b> 20157789	SJ 5/D10 (ET) 5/D10 HEFTE RANCH 632	
MIRA X58		

	BW	WW	YW	MILK	TM	SC	HCW	REA	MARB	FT
EPDs	-0.1	1	14	1	5	0.32	6	0.11	-0.18	0.01
Acc	0.43	0.48	0.34	0.27	--	0.18	0.28	0.31	0.46	0.49
%Rank	50%	85%	45%	40%	75%	70%	20%	25%	>95%	85%



### HEFTE RANCH G70

20191558 • G70 • 1/16/19 • Polled • Ref Sire



KR 97/10	RDF 8052 KR N2/5 4A	Bal Idx 30%
<b>KR 191/13</b> 20131196	FIVE OAKS 29/0 KR 70/0	C/C Idx 25%
KR 517/04 1A	DF PLAYBOY 281 C/A 314	Term Idx 30%
ROSE HILL SAM HOUSTON 831		
<b>HEFTE RANCH D122</b> 20157796	SJ 5/D10 (ET) 5/D10 HEFTE RANCH 229	
MUSCLES W53		

	BW	WW	YW	MILK	TM	SC	HCW	REA	MARB	FT
EPDs	-0.1	11	12	-4	5	0.6	2	0.1	0.15	0
Acc	0.37	0.5	0.36	0.32	--	0.22	0.29	0.33	0.47	0.5
%Rank	50%	45%	50%	85%	75%	15%	30%	25%	15%	60%



### KINGS AMIGO KR766/20

20205189 • 766/20 • 3/20/20 • Horned • Ref Sire



KR 34/14	KR 622/11 KR 70/12 2YO	Bal Idx 10%
<b>KR1594/17</b> 20175715	KR RICARDO 182/02 KR 320/01	C/C Idx 15%
KR 1001/05 (ET) 1001/05 5B	HXC BIG IRON 0024X KR 21/5 F2	Term Idx 5%
KR 1210R/14		
<b>KR1239/16</b> 20167638	KR 1058/05 (ET) 1058/05 KR 295/07 3A	
KR 612/10 F1		

	BW	WW	YW	MILK	TM	SC	HCW	REA	MARB	FT
EPDs	-0.1	20	26	0	13	0.37	5	0.09	0.4	0
Acc	0.06	0.35	0.21	0.13	--	0.13	0.11	0.19	0.32	0.35
%Rank	50%	20%	20%	50%	20%	50%	20%	30%	2%	60%



### QVF CHOSEN ONE 82H11

20200393 • 82H11 • 4/10/20 • Horned • Ref Sire



KR1195/15	KR 545/12 KR 245/10 F1	Bal Idx 1%
<b>KR651/18(CHOSEN ONE)</b> 20183702	DS PHOENIX 611 DEAN-HARRIS 022/4 (ET) 022/4	C/C Idx 10%
DSR CHERRY 923 1B	GUNSLINGER 13/5 HOLLY 20/3	Term Idx 1%
FC PISTOL 28/0		
<b>HARRIS 82/4</b> 20145298	SILVA 498/4 CSC COWGIRL 071/0	
CSC 7-7		

	BW	WW	YW	MILK	TM	SC	HCW	REA	MARB	FT
EPDs	-0.1	22	30	2	17	0.37	11	0.29	0.56	-0.05
Acc	0.25	0.26	0.3	0.1	--	0.18	0.12	0.27	0.38	0.4
%Rank	55%	10%	10%	25%	4%	55%	3%	2%	1%	1%



### QVF JACKPOT 5369G8

20193317 • 5369G8 • 10/8/19 • Horned • Ref Sire



KR 921/15	KR 800/11 KR 110N/09 110/09 N6	Bal Idx 1%
<b>HARRIS FARMS 190E</b> 20173826	HARCO T956 (ET) T956 HARCO T190/5 (ET) T190/5	C/C Idx 10%
HARRIS FARMS 1524	JHL JOSEPH 049 HINNANT-FULBRIGHT 9/153	Term Idx 1%
36/3		
<b>RED DOC 5369</b> 20158465	RDF SANCHO 7-216 RDF OLD SCHOOL 8083	
RDF 0035		

	BW	WW	YW	MILK	TM	SC	HCW	REA	MARB	FT
EPDs	-1.4	33	32	-4	16	0.18	11	0.12	0.9	-0.04
Acc	0.52	0.52	0.37	0.24	--	0.23	0.28	0.34	0.48	0.51
%Rank	10%	3%	15%	85%	10%	95%	10%	25%	1%	2%



### RED DOC ET LUMBRE 8509

20188237 • 8509 • 9/5/18 • Horned • Ref Sire



KR 189/11	KR 282/08 KR 363/5 5A	Bal Idx 3%
<b>RED DOC DIABLO 6306</b> 20164169	KR 189/11 O.X MACKENZIE 767	C/C Idx 10%
RED DOC 3167	MULTIPLE SIRE KR 5/812	Term Idx 3%
RDF LAURELES149/03		
<b>RED DOC ET 6332</b> 20167400	RDF 0-33 RDF 9-96	
RDF 3-4		

	BW	WW	YW	MILK	TM	SC	HCW	REA	MARB	FT
EPDs	-1.9	26	29	-9	7	0.28	10	0.11	0.17	-0.02
Acc	0.51	0.52	0.39	0.26	--	0.18	0.29	0.36	0.51	0.54
%Rank	2%	10%	15%	>95%	60%	80%	10%	25%	15%	10%







**SR 38/19**



20190191 • 38/19 • 3/5/19 • Horned • Ref Sire

<p>LJV MASON 0/72</p> <p><b>SR 27/6</b> 20164694</p> <p>SR ARKOMA 30/0</p> <p>AL ZEUS 213</p> <p><b>SR 17/4</b> 20141982</p> <p>P H WELDER 2/147</p>	<p>SR 710 LJV DOLLY 8/48</p> <p>MR WINROCK N127 PERNER D 931 STETSON 5714 HEFTE RANCH 157</p> <p>P H WELDER 4/564 WELDER RANCH 908/2</p>	<p><b>Bal Idx</b> 40%</p> <p><b>C/C Idx</b> 30%</p> <p><b>Term Idx</b> 50%</p>
--	--	--

	BW	WW	YW	MILK	TM	SC	HCW	REA	MARB	FT
EPDs	-1.1	6	6	-3	4	0.52	-3	0.06	-0.05	0
Acc	0.33	0.41	0.29	0.28	--	0.15	0.26	0.26	0.39	0.41
%Rank	15%	65%	65%	80%	80%	25%	55%	35%	65%	60%



**SR 87/7**



20171842 • 87/7 • 6/5/17 • Horned • Ref Sire

<p>KR 225/10</p> <p><b>KR CATALYST 531/15</b> 20153484</p> <p>KR 310/12 2Y0</p> <p>RED DOC 3150</p> <p><b>CTF QUIEN SABE'S BEAUTY</b> 20154810</p> <p>RED DOC 3227</p>	<p>KR 230/08 KR 328/5 (ET) 328/5 F2</p> <p>KR 56/10 KR 15/09 F1 RDF QUIEN SABE 0120 RDF 9020</p> <p>SR 58/0 RDF 1166</p>	<p><b>Bal Idx</b> 2%</p> <p><b>C/C Idx</b> 1%</p> <p><b>Term Idx</b> 10%</p>
--	--	--

	BW	WW	YW	MILK	TM	SC	HCW	REA	MARB	FT
EPDs	-0.2	22	22	-6	9	0.81	8	0.26	0.42	0.02
Acc	0.35	0.62	0.42	0.3	--	0.24	0.3	0.39	0.53	0.55
%Rank	45%	15%	30%	95%	45%	3%	15%	5%	2%	95%



**SR MARKSMAN 33/19**



20190165 • 33/19 • 3/1/19 • Horned • Ref Sire

<p>KR 225/10</p> <p><b>KR CATALYST 531/15</b> 20153484</p> <p>KR 310/12 2Y0</p> <p>RED DOC SI SABE 3106</p> <p><b>RED DOC 6054</b> 20165208</p> <p>RED DOC 4032</p>	<p>KR 230/08 KR 328/5 (ET) 328/5 F2</p> <p>KR 56/10 KR 15/09 F1 RDF QUIEN SABE 0120 RDF BONITA 8017</p> <p>RDF SANCHO'S NEVER BEFORE 1136 RED DOC 8168</p>	<p><b>Bal Idx</b> 1%</p> <p><b>C/C Idx</b> 1%</p> <p><b>Term Idx</b> 3%</p>
---	--	---

	BW	WW	YW	MILK	TM	SC	HCW	REA	MARB	FT
EPDs	-0.1	29	37	-12	6	0.71	13	0.28	0.35	0.02
Acc	0.46	0.49	0.34	0.3	--	0.2	0.27	0.31	0.45	0.47
%Rank	50%	5%	10%	>95%	70%	10%	5%	3%	3%	95%



**SR IMPACT 2/H4**



20200725 • 2/H4 • 4/17/20 • Horned • Ref Sire

<p>HARRIS 257/4</p> <p><b>SR IMPACT 30/F2</b> 20180821</p> <p>SR ARKOMA 30/0</p> <p>LJV MASON 0/72</p> <p><b>SR LIV 2/6</b> 20161095</p> <p>SR 837</p>	<p>AJH 126/0 HARRIS FARMS 037/2</p> <p>MR WINROCK N127 PERNER D 931 SR 710 LJV DOLLY 8/48</p> <p>SR 444 SR 613</p>	<p><b>Bal Idx</b> 5%</p> <p><b>C/C Idx</b> 15%</p> <p><b>Term Idx</b> 3%</p>
--	--	--

	BW	WW	YW	MILK	TM	SC	HCW	REA	MARB	FT
EPDs	-1.4	11	18	0	9	0.43	6	0.17	0.34	0
Acc	0.18	0.22	0.25	0.11	--	0.13	0.1	0.23	0.34	0.37
%Rank	4%	35%	25%	45%	35%	35%	15%	10%	3%	60%



**SR IMPACT 30/F2**



20180821 • 30/F2 • 2/10/18 • Horned • Ref Sire

<p>AJH 126/0</p> <p><b>HARRIS 257/4</b> 20145305</p> <p>HARRIS FARMS 037/2</p> <p>MR WINROCK N127</p> <p><b>SR ARKOMA 30/0</b> 1289177</p> <p>PERNER D 931</p>	<p>CHAPS 372 DOUBLE E 8T39</p> <p>QT SHERMAN TANK (ET) 03/4 HARWELL 20 WR NEW MILLENNIUM H233 MASDEN &amp; SON 225/9</p> <p>CHF SAMBO 514 DOUBLE P RANCH 345</p>	<p><b>Bal Idx</b> 10%</p> <p><b>C/C Idx</b> 25%</p> <p><b>Term Idx</b> 10%</p>
--	--	--

	BW	WW	YW	MILK	TM	SC	HCW	REA	MARB	FT
EPDs	-2.5	4	8	0	6	0.54	3	0.06	0.42	0
Acc	0.54	0.66	0.53	0.3	--	0.2	0.32	0.49	0.63	0.66
%Rank	1%	75%	60%	50%	70%	20%	30%	35%	2%	60%



**SR PARAMOUNT 30/H4**



20200729 • 30/H4 • 1/12/20 • Horned • Ref Sire

<p>KR CATALYST 531/15</p> <p><b>SR PARADIGM 135/7</b> 20175656</p> <p>P H WELDER 7/342</p> <p>MR WINROCK N127</p> <p><b>SR ARKOMA 30/0</b> 1289177</p> <p>PERNER D 931</p>	<p>KR 225/10 KR 310/12 2Y0</p> <p>P H WELDER 9/413 MISS GRANDVIEW 545 WR NEW MILLENNIUM H233 MASDEN &amp; SON 225/9</p> <p>CHF SAMBO 514 DOUBLE P RANCH 345</p>	<p><b>Bal Idx</b> 10%</p> <p><b>C/C Idx</b> 10%</p> <p><b>Term Idx</b> 15%</p>
--	---	--

	BW	WW	YW	MILK	TM	SC	HCW	REA	MARB	FT
EPDs	-1.4	5	8	-4	2	0.55	2	0.08	0.26	0
Acc	0.23	0.24	0.27	0.17	--	0.14	0.1	0.25	0.35	0.38
%Rank	4%	60%	55%	90%	85%	15%	25%	25%	5%	60%



**URBANOSKY 035**



20207215 • 35 • 8/11/20 • Polled • Ref Sire

<p>BULLETPROOF 4-30</p> <p><b>GERT DYNASTY</b> 2.01201E+11</p> <p>MEGAN 0-40</p> <p>MOSES L6/6 L6</p> <p><b>XL'S MISS MOSES 035</b> 1289616</p> <p>XL'S CHERRY DELIGHT828</p>	<p>POLLED PERFECTION 4-38 URBANOSKY 0-123</p> <p>HELLACIOUS 750 HARCO T240/5 (ET) T240/5 LUTENBACHER 270 6P</p> <p>XL HANNA'S RED HOT 517 (ET) 517 HCC DEDE 311</p>	<p><b>Bal Idx</b> 90%</p> <p><b>C/C Idx</b> 65%</p> <p><b>Term Idx</b> &gt;95%</p>
---	---	--

	BW	WW	YW	MILK	TM	SC	HCW	REA	MARB	FT
EPDs	0.9	2	3	3	8	0.35	-7	-0.04	-0.11	0.02
Acc	0.32	0.11	0.06	0.07	--	0.01	0.02	0.04	0.08	0.08
%Rank	90%	75%	70%	15%	45%	60%	80%	70%	90%	95%



**WENDT 9386**



20203887 • 9386 • 3/30/20 • Polled • Ref Sire

<p>BOND 007/RSR 007</p> <p><b>KR 1131/13</b> 20134080</p> <p>KR 704R/10 704/10 F1</p> <p>WENDT 7818</p> <p><b>WENDT 788</b> 20141239</p> <p>WENDT 9762</p>	<p>PCR AVALANCHE 95/5 (ET) 95/5 PCR LASSIE (ET) 68/6</p> <p>KR 68R/08 KR 406R/08 WENDT 7425 WENDT 8869</p> <p>6T5 WENDT 8707</p>	<p><b>Bal Idx</b> 20%</p> <p><b>C/C Idx</b> 20%</p> <p><b>Term Idx</b> 20%</p>
--	--	--

	BW	WW	YW	MILK	TM	SC	HCW	REA	MARB	FT
EPDs	-0.4	4	31	3	8	0.61	12	0.15	0.01	0
Acc	0.35	0.44	0.3	0.28	--	0.17	0.26	0.28	0.42	0.45
%Rank	35%	75%	15%	25%	55%	15%	10%	20%	40%	60%



# SANTA GERTRUDIS IS

## DATA DRIVEN

- › First *Bos indicus*-influenced breed to offer GE-EPDs.
- › First beef breed to implement “single-step” methodology.
- › 30 years of data collection = comprehensive genetic evaluation.
- › 11,000+ genotypes in SGBI data set – one of the largest for a *Bos indicus*-influenced breed.
- › Full range of growth and carcass EPDs = targeted selection and genetic progress.

## PROFIT PROVEN

- › Produce crossbred commercial females sought by cattlemen everywhere.
- › Adds profitable heterosis to any production system.
- › On-test gains of 3.5+ lb. ADG = efficiency, profit.
- › Adaptability, heat and parasite tolerance, disease resistance and increased longevity = more profit.
- › Igenity® *Santa Gertrudis* aids in commercial replacement heifer selection.



**SANTA GERTRUDIS**  
The Data Driven, Profit Proven  
choice for today's beef industry.



Santa Gertrudis Breeders International  
361-592-9357 | [sgbi@santagertrudis.com](mailto:sgbi@santagertrudis.com)  
[santagertrudis.com](http://santagertrudis.com) | Find us on [f](#) [t](#) [i](#)



**Purina Animal Nutrition and  
Capps Hardware & AG Center are proud to partner  
with Strait Ranches. The quality and performance of  
Strait Ranches' Santa Gertrudis cattle truly speak  
for themselves.**

**Feel Free to contact Wes Mason with Purina or Barry Capps  
with Capps Hardware & AG Center for more information on  
Purina products.**

**Wes Mason**

Cell: 979-540-7878  
[wamason@landolakes.com](mailto:wamason@landolakes.com)  
[purinamills.com](http://purinamills.com)

**Capps Hardware & AG Center**

Barry Capps  
(903) 389-4505  
512 W US Highway 84, Fairfield, TX





**Stait Ranches**  
**PO Box 246**  
**Streetman, TX 75859**

Presorted  
First Class  
US Postage  
**PAID**  
SlateGroup

*Thank you  
for attending!*



**STRAIT**  
*Ranches*



**HEFTE RANCH**