

# THE VOICE

of First Lutheran Congregation



First Lutheran Church  
401 7<sup>th</sup> Avenue SW  
Pipestone, MN 56164

☎ 507-825-5837

[www.firstlutheranpipestone.org](http://www.firstlutheranpipestone.org)

APRIL 2021

*We are all one body, one spirit, compelled by Christ to share his Word  
and the promise of salvation. Matthew 28*

## Newsletter Contents

Message from Pastor Joyce.....

Cover - Page 2

Eco -Palms ..... Page 2

Cultivating Generosity..... Page 3

2021 March Offering ..... Page 4

ELCA Death & Taxes ..... Page 5

Lenten Services ..... Page 6

First Communion ..... Page 6

2021 Council&Comm Members Page 7

FLCW Letter ..... Page 8

March Council Minutes ... Page 9-11

Help Wanted..... Page 11

Outreach & Missions Calendar Page 12

Visitations/Baptism ..... Page 13

MN Food Share Campaign ... Page 13

Senior Ctr. OPEN..... Page 14

Personal Care Kits ..... Pg 14

Mission Support Thank you .. Page 14

Worship Assistants..... Page 15

April Birthdays ..... Page 16

Shetek Letter ..... Page 17

ELCA Thank you ..... Page 18

Anxiety in Older Adults ..... Page 19

April Calendar ..... Page 20



#196943785

Dear Easter People

Christ is risen! Christ is risen indeed! Wonderful words I think we all need to hear this COVID season. The promise of new life and new beginnings. Living with COVID and restrictions this past year has been a challenge, depressing, confusing, frustrating,.. you add to the list your feelings. We need hope and new life and new beginnings. We cannot go back to the way things were. But we can be grateful for new life emerging. With the vaccines people are getting and things opening up a little more there are signs of life in the midst of pain.

That is Easter, life in the midst of death. We all have died a little this past year. Now is the time to open our hearts and lives to life and new beginnings. The tomb is empty. Christ is alive and

among us and is in us and with us. What is it in your life that has died? What is in your tomb? Jesus knows what death is and he is with us in the deaths we experience. But Jesus did not stay dead, so that we may not let what has died in us define us. Rather let us hold on to the promise that we live and the tomb is empty.

The word April means, "To open." Appropriate. There are many things that open in month of April; flowers, grass turns green, animals being born, people open doors and windows to fresh air, the list could go on. The call for us this April is to keep our eyes, ears, and hearts open to hearing and seeing God. The promise of Easter is that Jesus does go before us to show us the way.

Jesus opened a new way for people and brought hope and life. Jesus was made known to Mary in the garden, to the disciples in the upper room, to the disciples on the road to Emmaus, and he even made breakfast for the disciples. Jesus kept surprising people with his presence. During this April, be open to being surprised by the presence of Christ and the promise that we can begin again. COVID does not have the last word, the losses we experience do not have the last word, but Jesus does, "I am the resurrection and the life." So people of God bring to Jesus your fears, doubts and losses. May you bury them in the tomb with Jesus and let new life come.

Just remember that God goes before you to show the way, above you to watch over you, beside you to befriend, behind you to encourage you and above you to watch over you. Be open to experience his presence. He is with us all because the tomb is empty.

Prayer for Easter:

*Powerful living God, risen Christ, and hovering Spirit, thank you Creator God that you loved the world so much you sent your Son, Jesus to suffer death and rise again. Thank you that the tomb is empty and because Christ lives we too shall live. Open our eyes to see you in one another and the world around us. Open our hearts to receive your love and grace, and open our minds to know of the power of resurrection. Let us put to death and bury those things which keep us from serving you, knowing you, and loving you. Praise God that the tomb is empty and Jesus is always going before us to prepare the way for us. Amen.*

*+Pastor Joyce*

---

### **Eco-Palms - Chamaedora Palms purchased for Palm Sunday**

Eco- Palms preserve the livelihoods of the people living near the forests and vitality of the forests for years to come. A typical Eco-Palm is harvested in the forest by men and processed by women in the community. This increases employment opportunities for women in the community and helps them to contribute toward their financial stability. Without a market for the palms the forests are at risk of being converted to agricultural fields. The benefits of First Lutheran Church purchasing the palms will go directly back to the communities.







## **Cultivating Generous Congregations – March 2021**

### **Stories of Generosity**

Since taking the “Cultivating Generous Congregations” workshops in 2019, I now look for stories of generosity everywhere in the congregation. This week, as I participated in the first Adult Education bible study on the Beatitudes and Jesus’s teaching about happiness, I heard several stories of generosity and gratitude coming from those present. It was an uplifting experience and one that we all need coming out of a year of COVID. I thank those who shared their experiences and insights on the book, “The Good Life”, and encourage everyone to attend the remaining sessions. The next one is April 11. You can still participate in person or by Zoom even if you didn’t start at the beginning.

### **Called to serve – First Lutheran needs you.**

Be watching for a congregational survey from the council committees. We are looking at the challenges of the future. We want to know what programs you have been missing most, and what you look forward to as we move out of our year of COVID restrictions. How do you want to “be the Church” moving forward? The Generous Congregations text calls it “adaptive challenges”.

1. Figuring what to conserve from the past.
2. Figuring out what to discard from past practices.
3. Figuring out new ways to address and improve our most meaningful and important practices.

It’s important to know what our members are willing to support and participate in during the coming 2 years. The Council members have lots of ideas for building First Lutheran and making it an even stronger congregation. We need your input on this survey.

### **Financial Update**

We have about 6 months of pre-school rent coming to First Lutheran in 2021. The council has been discussing the best use for that money. It was decided to set up a temporary “technology” fund and to investigate the needs of the congregation in this area. Things like Zoom conferencing, on-line education/worship, communication and publication requirements have increased in the last year. Both Ellie’s and Pastor Joyce’s computers are becoming out dated and are just not meeting our needs. Replacement of Ellie’s computer and upgrading Pastor Joyce’s computer functions are first on the list. Future upgrading of our educational technology is also being investigated.

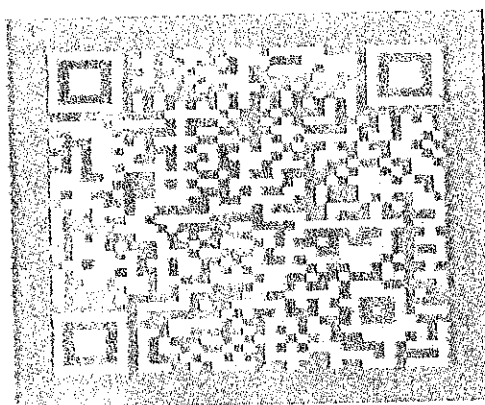
**“What people of faith do with their money (I might add - time and talents) is indicative of what they believe about God.” – Martin Luther**

Nancy Johnson

<b>Monthly Income Needed to Operate</b>	\$	17,800.00
LENT Wednesday – Mar 3	\$	180.00
Weekly Offering – Mar 7	\$	4,368.87
LENT Wednesday – Mar 10	\$	130.00
Weekly Offering – Mar 14	\$	7,298.51
LENT Wednesday – Mar 17	\$	175.00
Weekly Offering - Mar 21	\$	5,817.14
LENT Wednesday - Mar 24	\$	195.00
Weekly Offering - Mar 28	\$	3,295.72
LENT Wednesday - Mar 31	\$	
Other Income	\$	2,400.0
Total Monthly Offering	\$	

***Now there are Four Methods to use Simply Giving***

1. Your church offerings can be made weekly, every other week, or monthly through electronic funds transfer from your checking or savings account
2. Free Mobile Giving App enables your church offerings to be made securely from anywhere, with1-tap. Plus, it's completely FREE!
3. You will be able to use your Credit card at the Church.
4. Below is a Quick Response (QR) code. When you scan this barcode-like QR code image with a smartphone's QR decoder, it will instantly connect you to the mobile version of the church's web page.





## Death & Taxes

By Rev. Keith Pearson, ELCA Foundation

Benjamin Franklin is famously quoted for having written, *"In this world nothing can be said to be certain, except death and taxes."* It is a somewhat cynical sentiment many of us share. We begrudgingly acknowledge that both are undesirable, but unavoidable. As Easter people, Christians have cause to be a bit less cynical. And since Easter and the annual tax season are always so close together, perhaps we should consider both death and taxes.

Easter shows us that death is not an ending but a gateway to a life that has no end. It is the culmination of our baptism and the promise of the resurrection we have in Christ Jesus. We strive to live long and fruitful lives as God intends, but when we come to the end we trust that death does not have the final say. Furthermore we acknowledge our responsibility (in life and in death) to look out for the lives of our neighbors, doing our best to assure they too have long and fruitful lives, as free as possible from torment and suffering.

So as a matter of faith we should embrace and enjoy life, but not fear death.

Taxes, although no one's favorite, are necessary for life this side of God's final kingdom. They are part of what we ask for in the Lord's Prayer when we say, "...give us this day our daily bread." According to Luther's description of "daily bread" in the Small Catechism we need more than just food and drink, clothing and shelter, etc. we also need "upright and faithful rulers" and "good government." And those things have a price tag.

So as a matter of faith we should not begrudge paying taxes, but do our best to see that they do an adequate job of protecting and preserving our life and the lives of our neighbors.

As a Gift Planner I help you make plans for gifts that honor the lifetime of work it took to accumulate what is given. It is even possible that your planned gift can be made in such a way that it lasts beyond your lifetime. Admittedly part of what these plans accomplish is the avoidance of some taxes. But I don't believe this is contrary to our responsibility to providing "daily bread" for our use and for the needs of our neighbors. No, I believe the tax laws that allow such plans are intended to acknowledge the good work of many non-profit organizations. I believe they are meant to encourage you to use these tools to help in the work of caring for the lives of others.

I believe a good estate plan is actually a faithful expression of our Christian view of both death and taxes. It is our final testimony about our faith, and it is our final act of love toward our family, loved ones and our unknown neighbors. We may not be able to avoid death or taxes completely, but we can make the most of both.

---

*Keith Pearson is the ELCA Foundation's Regional Gift Planner in Western Minnesota. His services are available at no charge to those interested in leaving legacy gifts to local congregations, other ministries of the ELCA, and to charitable causes important to them. He can be reached at 612-718-4197 or [keith.pearson@elca.org](mailto:keith.pearson@elca.org).*



# Lent

**Our Theme for Lenten Worship Services is the "THE BODY OF CHRIST."**

Our worship service will help us to consider our Lord's humanity, the human body in which He lived, suffered and died. The question of us for

this Lent is, "How are we to live as the body of Christ today?" Another question we will seek to answer is, "How do we use our body to serve Christ?" Join us for this time of worship and meditation.

**The weekly topics during Lent will be:**

April 1st (Maundy Thursday) Blood of Christ

April 2nd: (Good Friday) Body of Christ

April 4th (Easter) The Risen Body of Christ



**We are people who are connected to Jesus through worship, through relationships with others and through the gift of Holy Communion.** We want to welcome those youth who are in the 5<sup>th</sup> grade that have received Holy Communion on Maundy Thursday, April 1<sup>st</sup> 7:00pm. This is always a great time for the youth to learn and be connected to their baptism.

The following 5th gradeers received First Communion on Maundy Thursday, April 1, 2021:

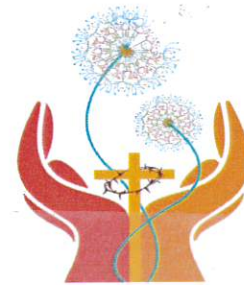
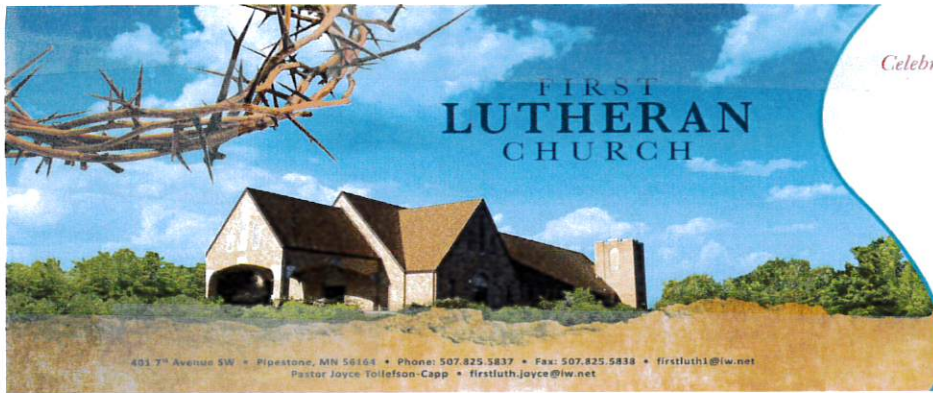
**Avery Mae Bosma** - daughter of Kim Bosma, Landon Bosma

**Tommie Louise Chaulsett** - daughter of Cory & Jessica Chaulsett

**Troy Leland Chaulsett** - son of Cory & Jessica Chaulsett

**Ryne Kennedy Gordon** - daughter of Erin & Jason Gordon

**Zachary Steven Sneller** - son of Lisa & Steve Sneller



### **First Lutheran Church 2021 Officers, Council & Committee Members**

#### **Officers:**

**President** - Nancy Johnson  
**Vice-President** - Craig Thies  
**Secretary** - Chris Hollingsworth  
**Treasurer** - Shar Ludolph  
**Financial Secretary** - Lori Woelber

#### **Council Members**

**Adult Education** - Brenda Kellen  
**Committee members** - Ingrid Wielenberg, Diane Leslie  
**Sunday School** - Kristen Brockberg  
**Committee members** - Danielle Ossefoort  
**Congregational Life** - Dave Dulas  
**Committee members** - Doreen Henderson, Teresa Jansen  
**Outreach & Missions** - Kristy Henriksen  
**Committee members** - Sheila Horton, Kennedy Maschino  
**Property Management** - Scott Sterud  
**Committee members** - Val Johnson, Al Hollingsworth, Mike Straw, Scott Rudie  
**Worship** - Tami Taubert  
**Committee members** - Lori Ilse  
**Youth** - Erin Musch  
**Committee members** - Amy Willey, Kevin Musch  
**Endowment** - Chuck Sendelbach  
**Committee members** - Patti Peterson, Steve Werner  
**Nominating** - Paul Henriksen, Sheila Johnson, Kristen Brockberg  
**Shetek Bible Camp** - Darlene Muller  
**Convention Delegates** - Paul & Kristy Henriksen  
**Audit** - Rob Woodbury, Wade Smith, Mike Kent



March/April 2021

Dear FLCW,

Happy Easter to All! The world is waking up after winter and our Covid-19 experience. Hopefully by fall things will be back to our new normal-whatever that looks like!

We are still collecting items for our Personal Care kits. The items needed are listed on pages 12-15 in the FLCW Handbook. We do not need toothbrushes at this time. I would like to assemble them before May 15.

Quilting will be held on the second and fourth Thursday in April at 9:30am. Dates are April 8 and 22. We can always use more hands to help. Quilts for our graduates will be presented on Sunday, May 9 at the worship service. Graduation is the following Sunday. We have 7 graduates this year.

Group Circle did not meet in March. We will have Group Circle on Tuesday, April 20. We will start with coffee and goodies at 9:30am along with the March Gather Bible Study. At noon we will have a potluck lunch with the April Gather Bible Study following. Come for the whole day or whenever you can make it. The study is on Angels. These are the last installments of this study. If you would like to hear the author of the study comment on the study, go to [www.gathermagazine.org/resources](http://www.gathermagazine.org/resources) and click on the study you wish to hear. It is a good way to prepare for the lesson or get a summary if you missed a lesson. There are many other resources on this site. It is worth your time to check it out.

A new shipment of rugs has arrived. The jeans collected have been taken there. Thank you for all the donations. Mud season is here! Maybe someone you know needs a new rug. They help send kids to Bible Camp!

The Shetek Lutheran Ministries Quilt Auction will be held in person this year. It will be held on June 25 & 26. Items you wish to donate should be at the camp by May 1 if you want them to appear on-line for preview. Items will be accepted after that time, of course. A Fall On-line Sale is being discussed. Last year's online sale raised \$25,031.00 in the summer and \$2,305.00 in the fall.

We will not be having a Spring Salad Luncheon this year. Maybe we can do something in the fall. We will see.

Again, have a blessed Easter!

See you in church!

Kristy





### **First Lutheran Church Council Meeting Minutes – March 10, 2021**

**Members Present:** Pastor Joyce, Nancy Johnson, Brenda Kellen, Craig Thies, Tami Taubert, Sharleen Ludolph, Kristi Henriksen, Dave Dulas, Erin Musch, Scott Sterud, Kristen Brockberg, and Chris Hollingsworth.

**Call to Order:** President Nancy Johnson called the meeting to order at 6:30 PM.

**Treasurer's Report:** Sharleen L. presented the financial reports, the reserve fund report, and the accounts payable report. These were reviewed and discussed by the Council. Kristi H. made a motion to approve the Treasurer's report as written and to pay the accounts payable. Erin M. 2<sup>nd</sup> the motion and it was approved.

**Devotions:** We watched a Growing Young video that was about Christianity and Jesus.

**Secretary's Report:** The minutes from the February meeting were reviewed. Brenda K. made a motion to approve the minutes as printed, 2<sup>nd</sup> by Tami T. Motion was approved.

### **Pastor's Report:**

- Pastor Joyce distributed a handout entitled "Mission Support: A Deep Dive". She talked about interesting facts on the handout.
- The bishop asked in a meeting: What have you learned during Covid? Pastor Joyce asked the Council and it was discussed - what are things you have missed or things you don't want to do.
- Discussed Facebook Live services – we will keep evaluating it. Discussed having a hybrid Church and moving forward with technology and keeping it.
- Pastor Joyce stated that Kristen Brockberg will be the Sunday School Committee Chair.
- Pastor Joyce told us that there are 2 upcoming baptisms and she has been meeting with 2 wedding couples. She started hospital visits this week. Good Sam and Ridgeview services will be starting again soon. Pastor met with 3 committees this month.
- PAS After Prom Party donation request was discussed. Brenda K. made a motion to donate \$150.00 to the PAS After Prom Party and to pay this from the Youth Fund. Kristen B. 2<sup>nd</sup> the motion and it passed.
- The ordering of offering envelopes was discussed and the different options we could change to – no account numbers, no names, or blank envelopes to reduce waste. These questions may be included in an upcoming congregation survey. Topic was tabled, because these do not have to be ordered yet.

- There are 14 kids in confirmation - 8 of them will be going to camp and 6 will not be going because their temps were not taken consistently for Covid requirements to attend. Pastor Joyce said that she will make up some workshops with the kids who can't go to camp. She said that she has been happy that the confirmation kids have been coming to Lenten Services and reading.

#### President's Report:

- Nancy handed out the Narrative Budget and explained it. There was some discussion.

#### Vice-President's Report: No report.

#### Committee Reports – Round Table

- Mission & Outreach – Kristi H. – They revised and updated the committee job description. Kristi gave a committee “Year in Review”. Nancy asked for a copy of the revised job descriptions from all the committees.
- Worship – Tami T. – They did not meet this month. Tami started reviewing the committee job description. Council discussed services for Easter week. It was decided to have a Maundy Thursday service and 1 service on Easter Sunday at 9:30 am. On Good Friday, the Church will open at 12 pm (noon) and Pastor Joyce will record a message for Facebook.
- Sunday School – Kristen B. was installed as the committee chair and she was welcomed back. There was discussion on different Sunday School options and having it on Wednesday nights. It could be a family night with confirmation, Sunday School, Adult Ed, and parent meetings.
- Adult Ed – Brenda K. – They met last week. They will be starting the book “Good Life”. They talked about doing a congregational survey. They are still reviewing the committee job description.
- Congregational Life – Dave D. – Pastor Joyce update – They met Sunday and talked about doing an email survey through Survey Monkey.
- Youth – Erin M. – Erin & Pastor Joyce met and put the 2022 youth conference trip on the calendar.
- Property Management – Scott S. – They have been discussing how to prioritize projects this Spring. Talked about steps, covering conduit on lights, and reviewing the mowing schedule.

#### Old Business

- Web Site update – Pastor Joyce and Nancy have not looked at it. There was discussion about putting the Church Service on the website.
- Bank Account signatures – Nancy passed around the bank account signature document for all to review. Kristen B. made a motion to accept the bank account signatures as presented (see attachment). Tami T. 2<sup>nd</sup> the motion and it passed.

- Offering pick up – Nancy passed around the monthly sign-up sheet.
- Rent Use / Reserve Fund – It was discussed what to do with the rent money received from the school. Brenda K. made a motion to put all the school rent money into a technology budget. Erin M. 2<sup>nd</sup> the motion and it passed.

### **New Business**

- Computer Updates – Ellie needs an upgrade to her computer. Pastor Joyce needs a monitor and speakers. A smart TV was discussed that could be used for meetings, videos, and other needs. Internet speed at the Church was discussed and needs to be discussed with Vast. It was decided that Brenda K. would get quotes on computer updates and she would let Nancy know. It was decided that a technology group needs to be developed to work on long term technology needs.
- Church Directory – Nancy said that the phone # list must be updated for Ellie.

**Adjournment:** The meeting was adjourned at 8:20 pm, with the Closing Prayer.

*Chris Hollingsworth, Secretary*



## **HELP WANTED**



With spring right around the corner; that means it won't be long before we get to put away the snow blower and drag out the lawn mower. First Lutheran Church is looking for congregational families or individuals that would be willing to volunteer to mow the pastor's residence for the season. If you are willing to assist us with this task, please call the church office and talk to Mark Zinnel. Depending upon the number of parties interested in helping out, a schedule will be set up to assign lawn care responsibilities throughout the summer. Please consider helping us out.



OUTREACH AND MISSION

## 2021 CALENDAR

APRIL	PERSONAL CARE KIT ITEMS COLLECTED BABY CARE KIT ITEMS COLLECTED LUTHERAN DISASTER RESPONSE
MAY	NOISY OFFERING: SHETEK LUTHERAN MINISTRIES
JUNE	SUMMER PROJECT
JULY	SCHOOL KIT ITEMS COLLECTED
AUGUST	SCHOOL KIT ITEMS CONTINUES CASH CANS AT THE PIPESTONE COUNTY FAIR (IF HELD)
SEPTEMBER	FARM HARVEST BAGS FOR FARMERS
OCTOBER	THE BANQUET WITH YOUTH AND ADULTS ON WED. OCTOBER 20 WINTER COAT COLLECTION (UNTIL COLLECTION DATE TBD)
NOVEMBER	FAIR TRADE COFFEE AND CHOCOLATE SALE NOISY OFFERING: ONDINI CIRCUIT SOUTH AFRICA
DECEMBER	FAIR TRADE COFFEE AND CHOCOLATE SALE TOY COLLECTION FOR KIWANIS PROJECT

\*OTHER PROJECTS MAY BE ADDED AS NEEDS ARISE. POSSIBLE PROJECTS MAY INCLUDE NURSING HOMES, SCHOOLS, LUTHERAN DISASTER RESPONSE, FOOD PACKING EVENTS, ETC.

\*IF YOU HAVE AN IDEA, PLEASE CONTACT THE MISSION AND OUTREACH COMMITTEE: KENNEDY MASCHINO, SHEILA HORTON, or KRISTY HENRIKSEN

## VISITATIONS

If someone is ill or in need of a Pastoral visit, please call Pastor Joyce on her cell phone @ 507-276-5543 or contact the Church office @ 825-5837. Please remember the following First Lutheran Church members in your prayers, send them a card, or stop to visit them. If you know of someone with special needs of any kind, please contact Pastor Joyce or the church office.

Kay Buranen.....	Good Samaritan
Darline Dalin.....	Good Samaritan
Allen Houg .....	Good Samaritan
Fern Horton.....	Falls Landing

*Receiving the Sacrament of Holy Baptism Keaton David Kirlin was born on August 19, 2020 son of Laura Thode & Jake Kirlin was baptized at First Lutheran on Saturday, March 6, 2021. Keaton's sponsors are Mike & Jennifer Thode, and Wyatt Kirlin.*



### 2021 March Campaign Food Shelf

Between Feb 16 - April 28, 2021, 300 food shelves around the state came together with congregations, businesses, community groups & others to restock food shelves to help feed our neighbors. All local donations remained in Pipestone. **Thank you for your support of the Pipestone**

**County Food Shelf. The total amount of donations given was \$722.52.**

**Senior Center, ages 55 and older, NOW OPEN !**

Join for \$12/ year

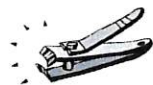
We are a 501(c) 3 non-profit organization and are taking donations to keep the Center operating.

P.O. Box 291, Pipestone, MN

CALL 825-3252 Monday - Thursday 1-5:00pm



shutterstock.com · 261338864

**We are collecting items for the Personal Care Kits through the end of April**

† One light - or medium - weight bath size towel (approximately 52" x 27"), dark color recommended

† One metal nail clippers, remove packaging

† One sturdy comb, remove packaging

† Two bath-size bars (4 to 5 oz.) of soap, any brand, in original wrapping



# MISSION SUPPORT 2020

**MISSION SUPPORT 2020**

**THANK YOU**

To the members of First Lutheran Church - Pipestone from the SWMN Synod of the ELCA.

In grateful appreciation for giving \$3,000.00

for Mission Support beyond the congregation for synod and

churchwide ministries of the ELCA



# WORSHIP

## ASSISTANTS

Date	Time	Reader	Communion Assistant	Ushers	Sound
04/01/21 Maundy Thursday	5:30am	Avery Bosma Zach Sneller			Mark Zinnel
04/02/21 Good Friday	Church will be open for prayer & meditation				
04/04/21 EASTER	9:30pm		Crsity Appel	Ron Hellie Mark Christensen Mike Straw Bob Hubner Cory Chaulsett family	Mark Zinnel
04/11/21	9:30am			Ron Hellie Mark Christensen Mike Straw Bob Hubner Cory Chaulsett family	Neil Johnson
04/18/21	9:30pm			Ron Hellie Mark Christensen Mike Straw Bob Hubner Cory Chaulsett family	Brandon Willey Mark Zinnel
04/25/21	9:30am			Ron Hellie Mark Christensen Mike Straw Bob Hubner Cory Chaulsett family	Jason Weber

04/01 Jessica Chaulsett  
 04/02 Laura Rudie  
     Robert Schloendorf  
     Tracie Skyberg  
 04/03 David Buffington  
     Bianca Claussen  
     Elliot Sterud  
 04/06 Carly Alderson  
     Kaitylyn Ilse  
     Carla Stanga  
 04/07 Nick Schulze  
     Dan Scotting  
 04/08 Braeden Benz  
     Travis Boucher  
     Wade Newgard  
 04/09 Tracy Musch  
 04/10 Judy Hansen  
     Dale Roemmich  
 04/11 Kiley Houselog  
 04/12 Joyce Kunz  
     Maxten Schulze  
     Gene Spicer  
 04/13 Kaleb Stevens  
     Judy Stubbe  
 04/14 Tom Abrahamson  
     Hayes Muller  
 04/17 Mike Thode  
 04/18 Becky Kaffar  
 04/20 Dar Eslick  
     Shelly Kozlowski  
 Connor Wagner  
 04/21 Alvin Huebner  
     Mick Myers  
 04/22 Chris Hummel  
     Kim Wolff  
 04/24 Aubrey Brockberg  
     Brittney Reinert  
 04/25 Cheryl Greenhoff  
     Calvin Musch  
     Kevin Musch  
 04/28 Joyce Capp  
 04/29 Kaston Schroyer  
 04/30 Alice Heller

# Happy Birthday





**Shetek Lutheran Ministries**  
**14 Keeley Island Dr.**  
**Slayton, MN 56172**  
**(507)-763-3567**  
**camp@shetek.org**  
**[www.shetek.org](http://www.shetek.org)**

**Executive Director – Marv Nysetvold**  
**Program Director – Amanda Randall**

March 19, 2021

Dear Member Congregations of Shetek Lutheran Ministries,

What a year! Looking back at the letter I wrote at this time last year, who could have guessed what we've experienced. Shetek did have a shortened, smaller camping season last summer after the MN Department of Health (MDH) came out with guidelines in June. We are planning on our full season this summer but with limited numbers again this year and are following the current guidelines put out by the CDC and the MDH.

Even though 2020 was difficult, we were able to get some projects done. Some wonderful volunteers added a deck and stairs on the back of the chapel. The Dining Hall kitchen ceiling and back hall were repainted. We did have to repair a sewer line by the Dining Hall. Cabin #5 and the Apartment building were repainted.

We've also been able to partner with you, our member congregations, in different ways this past year. Our Program Director, Amanda, worked with a couple local congregations and we offered "Campfirmation" as a resource for their confirmation programs. Shetek also produced a worship service available for congregations to use on Dec. 27<sup>th</sup>, a Sunday when pastors often take a well-deserved break. In partnership with another local pastor, Amanda helped develop an at home series of resources called "Dwelling in Discipleship" for this Lenten season.

Our capital campaign is slowly starting up again with the phases that were suspended last year. The alumni phase, former board phase and congregational phase will be restarting in 2021. The architect's plans for the Adult/Youth Lodge are finished and we are getting bids from contractors. If everything goes well, we plan to use the new building this winter!

Financially, Shetek was blessed by generous donors and congregations in 2020. With your support and minimizing expenses, we finished the year in good shape. We are so grateful for the generosity that has allowed us to be optimistic for 2021 also. I hope you have been blessed by the generosity of your members.

As we prepare for summer 2021, if you are able to send a gift at this time, it will be greatly appreciated.

Blessings,

Marv Nysetvold  
 Executive Director



February 23, 2021

*Thank You*

First Lutheran Church  
401 7th Ave SW  
Pipestone, MN 56164-1166

Dear First Lutheran Church,

Thank you for your gift of \$954.32 to ELCA World Hunger.

*Born thy people to deliver, born a child, and yet a King,  
born to reign in us forever, now thy gracious kingdom bring  
("Come, Thou Long-Expected Jesus," ELW 254).*

This season, we remember a time before Christ's birth, when humanity waited to be delivered from fear and sin. But, we also remember the day the waiting ended. Our Savior arrived, and now we live in a world transformed by God's grace. Through your gifts to ELCA World Hunger, you are sharing the everlasting joy of that transformation with your neighbors around the world.

Your generosity is getting at the root causes of hunger and poverty in over 60 countries including the United States. It is providing access to clean water, health care, agriculture, livestock, education, and peace and justice. Through your gifts, you are joining with the whole church as we work toward a just world where all are fed.

Jesus was born to reign in us forever. Now, you are inviting countless others into his gracious kingdom. Thank you.

In Christ,

*Robin K Brown*

The Rev. Robin Brown  
Mission Funding Director, Congregations

*P.S. Please see the reverse side of this letter for your receipt.*



# Anxiety in Older Adults

HELP YOURSELF. HELP OTHERS.

## Anxiety Risk Factors

Do you sometimes experience chest pains, headaches, sweating, or gastrointestinal problems? You may be experiencing symptoms of anxiety. Chronic excessive nervousness, racing thoughts and fear that interferes with daily activities is not a normal part of aging.

Did you know? 27% of older adults under an aging service provider have symptoms of anxiety that scientifically impact their daily functioning

- Chronic medical conditions
- Overall feelings of poor health
- Sleep disturbance
- Side effects of medication
- Alcohol or prescriptions misuse
- Physical limitations in daily activities
- Stressful life events (past or present)
- Excessive worry
- Preoccupation with physical health symptoms


Living with chronic anxiety can cause mental and physical problems if gone untreated. **Anxiety is common and treatable.** The earlier it is identified and addressed, the easier it is to reverse the symptoms.

### Screening for Anxiety

A quick, easy, and confidential way to determine if you may be experiencing anxiety is to take a mental health screening. A screening is not a diagnosis, but a way of understanding if your symptoms are having enough impact that you should seek support.

If you, or someone you know is struggling with anxiety contact Senior Life Solutions at 507-825-7210.



Pipestone County  
Medical Center  
**Avera** 

**First Lutheran Church (ELCA)**  
**401 7<sup>th</sup> Avenue SW**  
**Pipestone, MN 56164**

**Non Profit Organization**  
**U.S. Postage**  
**Pipestone, MN 56164**  
**Permit No. 103**

**Worship schedule: 9:30am Sundays**

**Radio Worship Broadcast: Sunday on KLOH 1050 AM at 10:30am**

**TV Public Access: Wednesday @ 2pm & 7pm on Channel 3**

**Our Church Staff**

Ministers . . . . Members of First Lutheran  
 Pastor . . . . . Rev. Joyce Tollefson Capp  
                     Email: firstluth.joyce@iw.net  
 Office Manager . . . Elle Trautman (5-5837)  
                     Email: firstluth1@iw.net  
 Custodians . . . . . Mark Zinnel  
                     (Cell 820-2676) (Home 825-2953)  
                     Melissa Burnett (Cell 215-0166)

**Church Office:**

Phone: (507) 825-5837  
 Fax: (507) 825-5838  
 Parsonage Phone: (507) 825-3106

Website: [www.firstlutheranpipestone.org](http://www.firstlutheranpipestone.org)  
 Facebook: Google First Lutheran Church  
 Pipestone Fb & hit the FB link on the  
 webpage

***The VOICE is produced monthly by First Lutheran Church (ELCA).***

**Congregational Contacts:**

President . . . . . Nancy Johnson (5-3744)  
 Vice President . . . . . Craig Thies (5-5153)  
 Secretary . . . . . Chris Hollingsworth  
 Treasurer . . . . . Shar Ludolph  
 Financial Secretary . . . . . Lori Woelber

**First Lutheran Church Women:**

President . . . . . Kristy Henriksen (5-3122)  
 V. President . . . . . Betty Johnson (5-5116)  
 Treasurer . . . . . Carol Johnson (5-3811)  
 Secretary . . . . . Darlene Muller (215-5741)

First Lutheran Church Council meets on the  
 second Wednesday of each month @ 8 p.m.

First Lutheran Church Committees meet on the  
 first Wednesday.