



WELCOME TO OUR

Monthly Newsletter



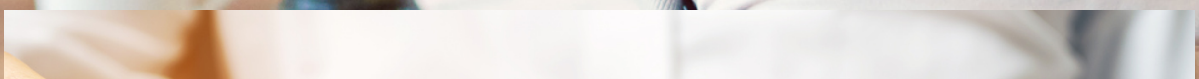
The Interior Design Trends To Know In 2024 – And What’s On It’s Way Out

Renewing a space often involves updating the existing design, incorporating new elements, and revitalizing the overall aesthetic. While specific trends can change over time, we made your job easy by compiling the welcomed trends and what is no longer popular so you can only step back on time if this is your objective.

[View More](#)



In this newsletter you will find:



What's on?

All tones of pink and peach.



All shades of pink and red are a solid ongoing trend that makes beautiful interiors. The pale tones bring calm and sophistication with yet a very modern take.

Wooden wall panelling is an excellent way to add personality to a room and is versatile. It can be used to add Georgian-style grandeur to a room, or lend a feeling of cosy cabin chic.

Panelled walls



Stripes



Big comeback! It feels traditional and yet modern and so fresh right now. You can use it mixed with other prints or subtle fabrics such as geometrics and plains, Stripes are also elegant on headboards and big sofas.

Organic shapes

Organic shapes, with their irregular and imperfect nature, curved and flowy can make a piece of art or design seem more natural and real. It works well in small spaces, and it facilitates circulation and softening lines.



[View More](#)

What's out?

Glossy cabinet doors.



Glossy cabinet doors, particularly white are not as popular, although many shops still supply them. Long ago, homeowners preferred a matt finish approach in the kitchen and bedrooms.

Matt finish cabinets with beautiful hardware are now used in several colours, and on bigger scales like wardrobes and kitchens, a matt finish makes the colours more authentic; also it is easy to achieve that feel you're looking for, being homely, fun or elegant.

Design copied from Instagram and Pinterest.

There will be an emphasis on unique finds and curated spaces rather than replicating what you see from others online, mainly because their ideas are not applicable in real homes. The focus is now on creating interiors that withstand daily life and are connected to those who live there.

Full on grey decor

From walls to sofas and tile, grey was considered stylish for years. But now that time is up. With excessive use of grey, your home can feel impersonal, sterile and poorly thought out. The secret is to mix it with other colours and use brass and black metal finishes.



Windle Decor can elevate your space with beautiful and functional designs.
Contact us today!