

Introducing the SMART SAMPLER



Handheld Sampling Device
with Touchscreen



Sampling Management
Web Application



Sampling Container with
Sample Sponge

A next generation sampling system that delivers key insights

What are the benefits of the Smart Sampler?



Integrated and insightful
smart system



Useful, accurate, and
transparent

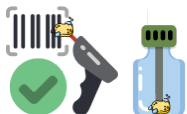


Optimized tool for handling
multiple samples

The Smart Sampler's three components (Wizard, Wand, Vial) provide a complete solution



The innovative **Smart Sampler Wizard** is a web-based application that provides a complete beginning-to-end sampling management tool. Users can create sampling plans, track lab results, generate reports, and view key insights at-a-glance.



The Wizard integrates with the **Smart Sampler Wand**, a handheld automated sampling device with touchscreen controls, and the **Smart Sampler Vial**, a barcoded container that can be sent with the sampling sponge directly to a lab for testing.

MicroTally™

This cutting edge technology is brought to you by the team that launched the patented MicroTally™ Swab, which is currently being used by the nation's top food producers

Find more information including the latest updates at www.smart-sampler.com