

# Capabilities Statement

Certified Mechanical Services

**Created:**  
January 2023

# Contents

- 02 About us
- 03 What Makes Us Different
- 04 Our Services
- 05 Labour Hire
- 06 Civil & Mining Machine Hire
- 07 Why Choose CMS
- 08 Our Social Media
- 09 Contact

Let us tell you something  
**about us**

**From breakdowns and call-outs to undercarriage rebuilds and repairs, whatever your project requires, Certified Mechanical Services will provide an experienced, fully qualified team committed to reducing your downtime while working to the highest possible standard.**

Certified Mechanical Services is a mining and civil contracting company operating in the South West of WA. We have been an established company since 2021.

Our Owner and Director has over 10 years in the trade and has built a name for himself on his quality and professionalism in the industry.

Our small dynamic team of 5 Heavy Duty Diesel Mechanics and 1 Boilermaker will take on any challenge and are dedicated to problem solving and delivering results above and beyond our client's expectations. Our number one priority is to ensure that our services and capabilities are positioned firmly in line with our client's needs. We aim for a continuously innovative approach in our services, keeping up to date with the latest technologies in the industry to improve safety and productivity.

CMS employ highly specialised and knowledgeable staff that offer 24/7 breakdown services. We also have a wide range of specialised tooling such as: high quality diagnostic tooling, Caterpillar D8 through to D11 equaliser bar and bogie press equipment, 3/4 to 1 inch square drive Hytorc hydraulic torque tooling, RAD gun and more. We offer full mechanical service and repairs such as machine and component rebuilds, dozer track frame rebuilds and repairs, hydraulic and electrical diagnostics and repairs.







## What makes us different?

We are driven by our values, focused on finding solution and backed by a strong team of knowledgeable individuals. Our rapid growth and demonstrated history of excellent customer service has been a testament to our core values.

# Values

### Professional

We pride ourselves on our professional service and our ability to maintain strong professional relationships with our clients and partners.

### Quality

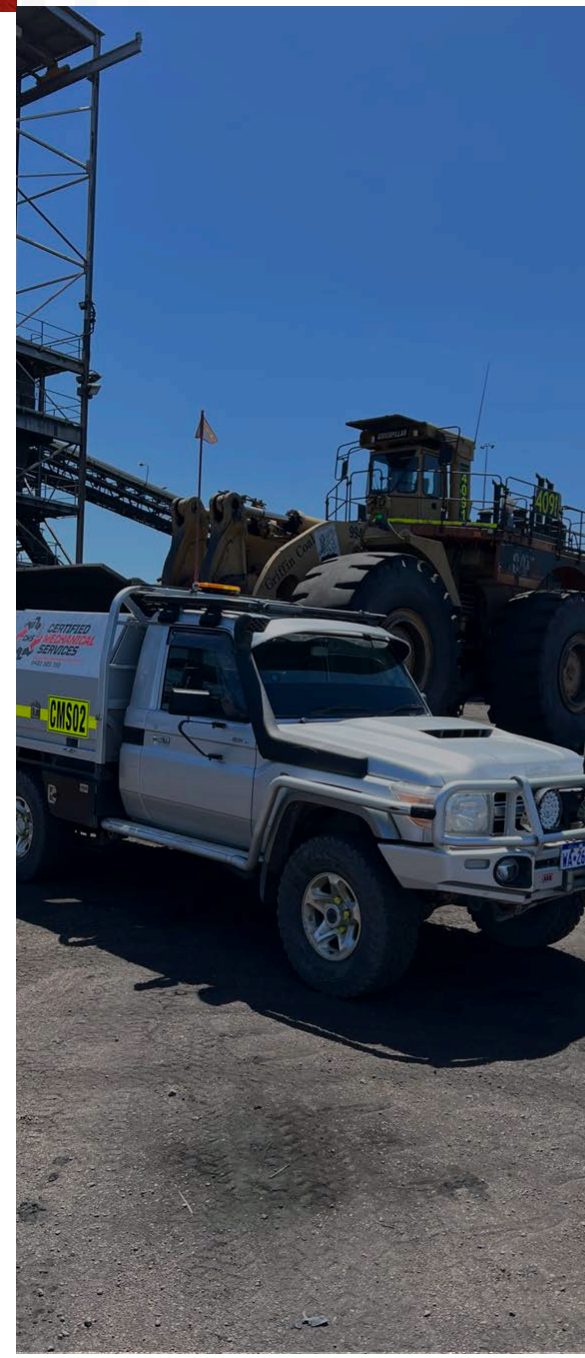
We perform quality work efficiently. Using quality equipment, we are able to provide the highest standard of work to all projects.

### Commitment

As well as being fully committed to all our projects, we are committed to supporting our clients and ensuring their satisfaction in their relationship with us.

# Services

What we do best  
**Our Services**



#### Component Change Outs & Rebuilds

Component change outs and rebuilds on all major equipment.



#### Mobile Mechanical Services

Call out services in break down situations to various mines and work sites.



#### Machine Diagnostics

Complicated Diagnostics are always high on our priority list to minimise down time on any machine.



#### Machine Hire for Wet & Dry

Motor Graders have become the industry standard in operational efficiency and overall productivity.



#### Labour Hire

Our Heavy Diesel Mechanics have experience in a range of skill sets and are committed to supporting you to get the job done.



# hire

Labour  
**Hire**



## Labour hire you can count on.

Certified Mechanical Services specialises in mobile equipment and labour solutions for mining, civil and transport industries across Western Australia. Our Heavy Diesel Mechanics have experience in a range of skill sets and are committed to supporting you to get the job done. Whether it is a short term breakdown or rostered long term work, you can rely on the CMS team to get you back up and running.

With decades of experience across our personnel, you'll benefit from our ability to solve problems and make decisions efficiently and effectively and to work with you to ensure job satisfaction.

## Civil & Mining Machine **Hire**

### 2022 150 **Caterpillar Grader**

Motor Graders have become the industry standard in operational efficiency and overall productivity.

From building roads to maintaining them, Motor Graders are designed to help you get more work done in less time. Unprecedented operator comfort and ease of service help to maximise your return on investment.

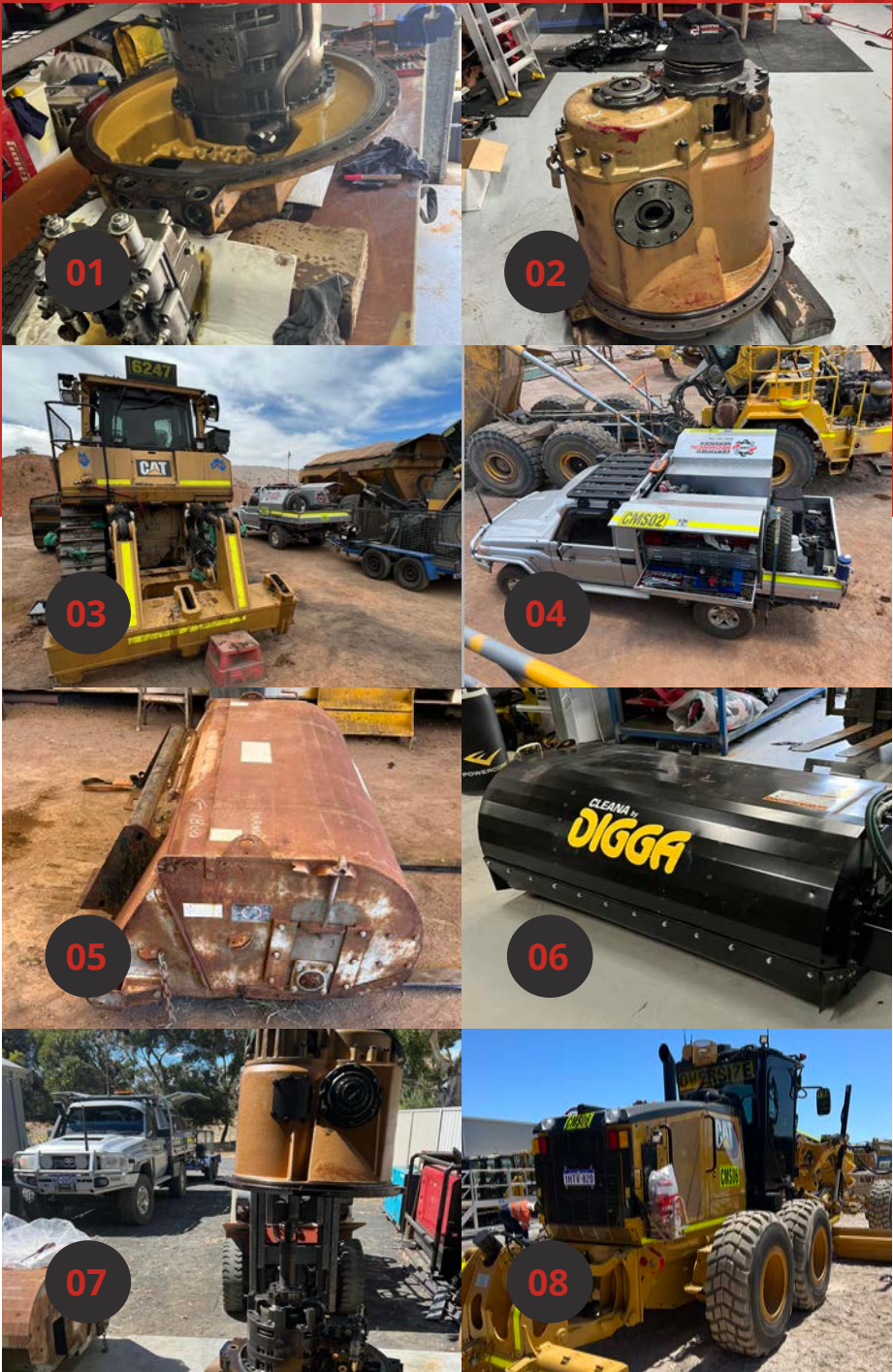






Our team of certified mechanics provide the tooling and expertise to keep your mining and civil equipment on the go and reduce your downtime.

# Some pictures from on the job

Keep up with us on social media to see more examples of our rebuilds, installs and maintenance projects.



 [certified\\_mechanical](#)  
 [Certified Mechanical Services](#)

## Why Choose CMS

We pride ourselves on getting the job done efficiently and keeping client operations running strong.

Our goal is to ensure our clients satisfaction and build strong, trusting relationships with them.

-  **Proven track record**
-  **No minimum engagement periods**
-  **Proactive and safety focused culture**
-  **Complete solutions**
-  **Quality workmanship**
-  **Cost-effective breakdown support**
-  **Local support**
-  **Shut Down Planning**

**Thank  
you.**

**Contact us:**

Phone: 0403 305 790

Email: [admin@certifiedmachineservice.com](mailto:admin@certifiedmachineservice.com)

[www.certifiedmechanicalservices.com.au](http://www.certifiedmechanicalservices.com.au)