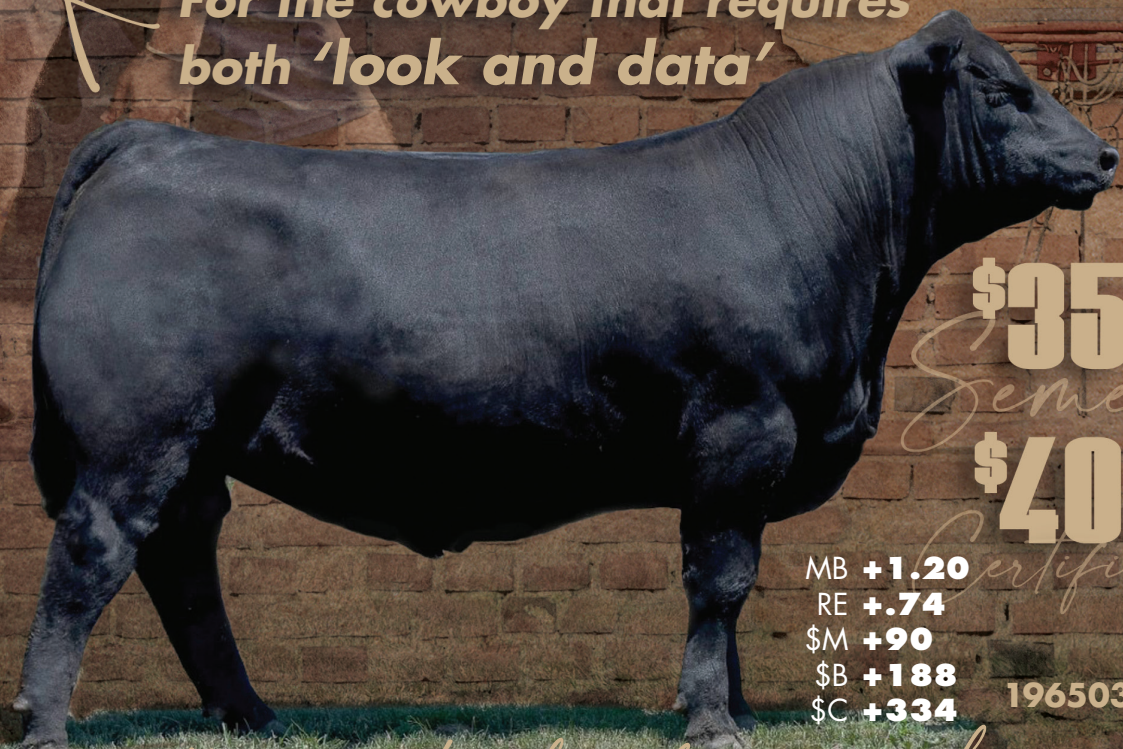


CROSSOVER

For the cowboy that requires both 'look and data'



\$35

Semen

\$40

Certificate

MB **+1.20**
RE **+.74**
\$M **+90**
\$B **+188**
\$C **+334**

19650313

The bull the industry has been searching for!

CED **+13** BW **-.2** WW **+68** YW **+120** Doc **+32** HP **+14.5** CEM **+18** Milk **+33** MH **+.3** Claw **+.35** Angle **+.38**

CROSSOVER

- #Sitz Upward 307R [AMF-CAF-XF]
- *PA Up Stream 001 [DDF]
- #Sik Queen M 122574 [DDC-CAF]
- *PA Fortitude 2500 [AMF-CAF-XF]
- +*PA Sarah A400-6300
- +*Yon Sarah A400



Pierce, NE
Brian & Crystal Herbolsheimer
402-649-7449
connect@herbcattleco.com
herbcattleco.com

Sale Date
Saturday
March 13, 2021



Drew • 816-261-7150
Bryson • 816-261-5198
Andy • 816-261-7132
8850 Co Rd 58 • Savannah, MO 64485
byergoangusfarms@hotmail.com
www.byergo.com

Sale Dates
Saturday **October 10, 2020** Saturday **February 20, 2021**

Do you want...

- ... that ultimate complete EPD profile?
- ... great feet?
- ... that super stout bull look?
- ... that super maternal cow family by Sarah?

BW ✓ \$B ✓
MB ✓ \$C ✓
\$M ✓

Fortitude ✓
Outcross Pedigree ✓
Feed Efficiency ✓

EPDs as of 7/29/20