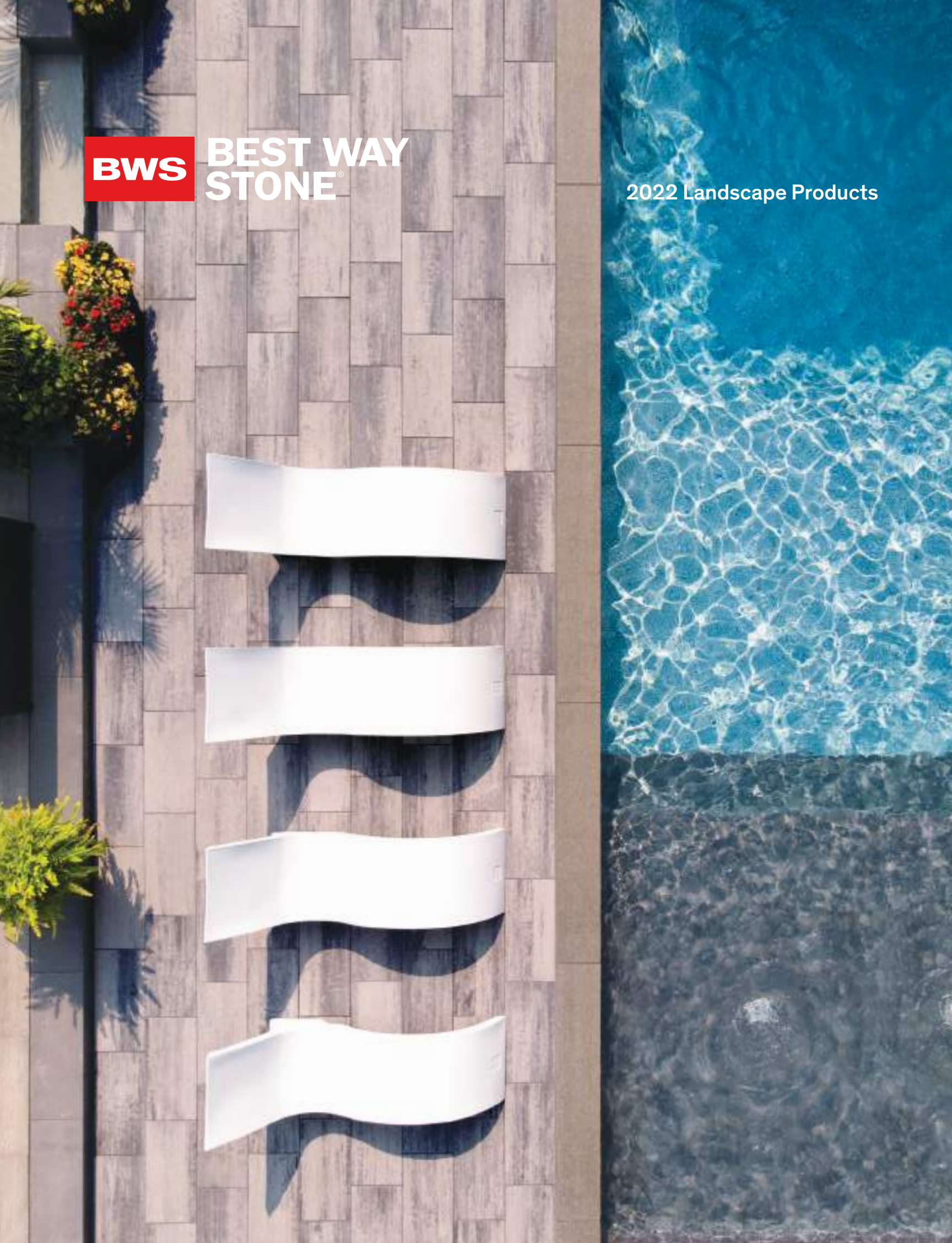


BWS BEST WAY
STONE®

2022 Landscape Products



Contents

INTRO

- 2 The Best Team
- 4 A Good Foundation
- 6 Curated Product
- 8 New for 2022
- 10 2022 Outdoor Collection
- 14 2022 Lookbook

PAVERS

- 38 Manhattan Plank
- 40 Trevista® 80 Smooth
- 42 Trevista® 80 Textured
- 44 Richmond™ 80
- 45 Adelaide™ 80
- 46 Ashford
- 47 Strada® Nova
- 47 Corso®
- 48 Moderna®
- 49 Ardesia®
- 49 Standard™ & Double Standard™

SLABS

- 52 Ventura
- 54 Balsam
- 56 Opus
- 57 Huntington
- 57 Lyra
- 58 BW300
- 59 Spectra
- 60 Avari™
- 62 Trevista® 50 Smooth
- 64 Trevista® 50 Textured
- 66 Richmond® 50
- 67 Adelaide® 50
- 68 Tresca™
- 70 Flagstone™
- 71 Basketweave™
- 71 Standard Press™
- 72 Dado Ceramica Porcelain Slabs

WALLS

- 76 Barnbeam
- 77 Arlington
- 78 Soho
- 80 Hazelton
- 81 Antico® Stacker
- 82 Garden Lock™
- 83 Parkwall®
- 84 Rockton
- 85 Belvedere™ Wall & Coping
- 86 Ikon
- 87 RidgeWall® SRW System

STEPS, CAPS & CURBS

- 90 Ikon Step
- 91 Ridge Step™
- 92 Camden Step™
- 93 Sopra Coping
- 94 Montana Cap
- 95 Riviera Cap
- 96 Barollo® Round Edge Coping
- 97 Parkwall® Column Cap
- 97 Bullnose Column Cap
- 98 Dimensional Coping
- 98 Antico® Curb
- 99 Garden Curb
- 99 Driveway Curb

ENVIRO PRODUCTS

- 102 Moderna® Permeable Paver System
- 103 White Solar Reflective Rooftop Paver

HARDSCAPING ACCESSORIES

- 104 Joint Sand
- 104 Sealers & Cleaners
- 105 Tools, Accessories & Other
- 105 Precast Concrete
- 106 Care & Considerations
- 108 Pattern Guides
- 110 2022 Colour Chart
- 112 Masonry & Builder

LEGEND



Vehicle use permitted



Permeable and/or Eco-Friendly product



Pedestrian traffic only



Vibrating plate permitted (rubber membrane required)



Made with DesignLoc®



Enhanced with ChromaTec™



Enhanced with NanoBlast

There's so much more
that goes into creating
hardscape products.

It's a mix of ingredients
that gives them integrity.

When you choose Best Way
Stone[®], you're installing
hardscape products
created by the best team,
a good foundation and
a curated product line.

— We have **the best team**

The BWS Family

Best Way Stone is about endurance: products that last, styles that last, and as a family-owned and operated business since 1965, we want our relationships to last, too. That's why we continue to craft our products locally, independently, and back it with a transferable lifetime guarantee. We're family, and we're here for you.

Independently Owned; Family Operated

Best Way Stone is one of only a few independent family-owned, pre-cast concrete manufacturing businesses. And that philosophy permeates everything we do. Our team is family – and one that puts your family's needs first. Even as we've grown and expanded to new locations, we've still maintained our flexibility to respond quickly to both market demands and home-owner needs. This allows us to innovate quickly.

Our Dealer Network

Our extended family includes an extensive network of dealers located throughout Ontario, Quebec, and North-East Michigan. Our dealers will help you visualize your landscape by pairing the right products with your project design and style needs.

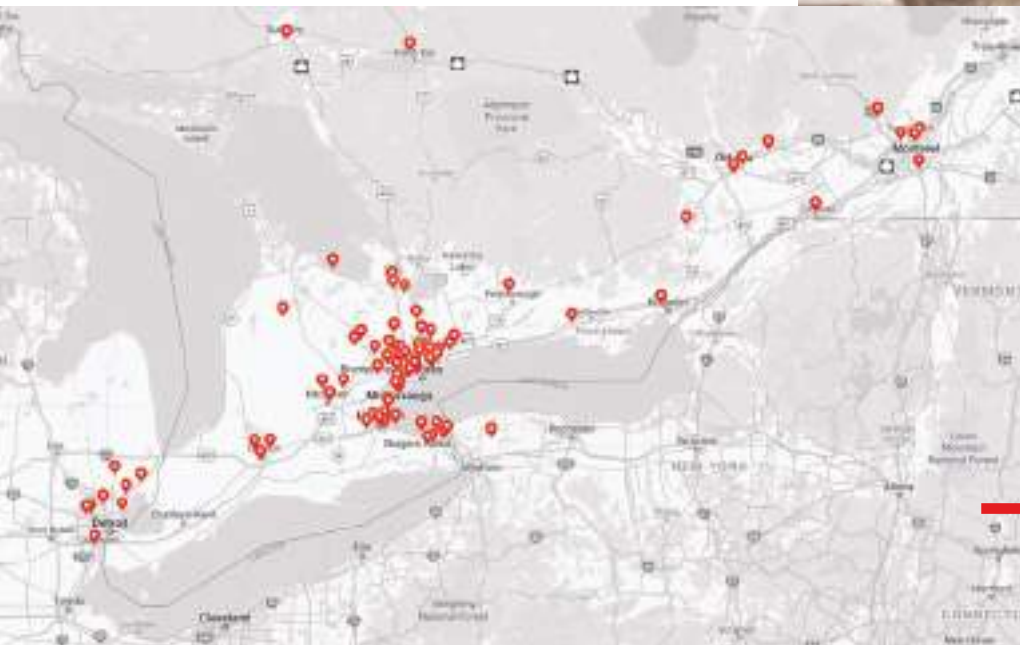
The Right Partner

Hiring a qualified hardscaper makes installing hardscape products a much more efficient experience. When hiring a qualified professional we recommend they follow industry-standard guidelines.

We recommend collecting project references and samples of previous work. Make sure they offer a comprehensive warranty and have all the required insurance and licenses.

Any certified contractor will understand the industry standards for installing hardscape products – you can download a copy of these guidelines by visiting icpi.org.

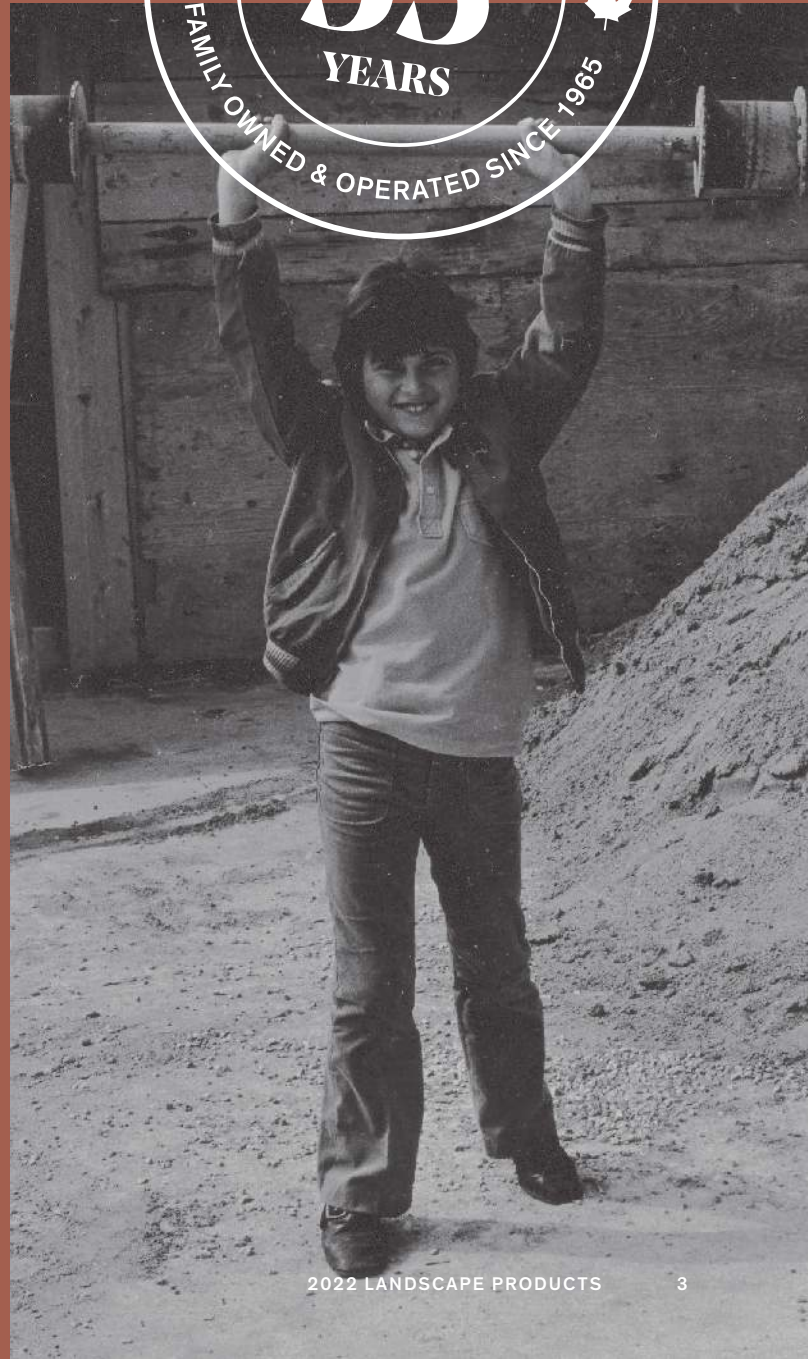
Visit our website to find a hardscaper near you: bestwaystone.com/hardscaper



Visit our website to find a dealer near you: bestwaystone.com/dealers



The best products built
using the best practices.
That's the best way.



— We have a good foundation

Manufacturing Leads Design

Hardscaping solutions should be designed to last. So our philosophy is that manufacturing processes should always influence product design.

Thoughtful Innovation

We've built production facilities and equipped them with manufacturing technology and our own proprietary processes that are engineered specifically to ensure our products are well-planned, well-designed and well-made.

With two state-of-the-art manufacturing facilities, and dealers to support you across Ontario, Quebec, and Michigan, we're completely independent and able to both hear and respond to your needs.



Our products are resistant to the elements & meet or exceed all industry standards.



We manufacture our products using two key ingredients: quality and care. All are manufactured to meet and exceed their respective North American standards set by both the CSA and ASTM.



That commitment to quality is backed by our transferable lifetime guarantee on the structural integrity of our pavers. You can learn more about our transferable lifetime guarantee on our website: bestwaystone.com/warranty

Designed to Last Generations.

One of the most common questions we get from customers purchasing hardscape products is how they will wear over time. Our recent technological advancements provide layers of enriched surfaces and colour, bringing product aesthetics and performance to the next level.



The DesignLoc surface refinement technology is a strategic mix design that produces a highly controlled and refined surface offering.



ChromaTec protective surface enhancer adds a level of protection that helps resist the threat of stains from foreign elements while enhancing the vibrancy of the coated surface.



NanoBlast provides a fine blasting to the surface of the product, exposing specially selected granite aggregates, while leaving a durable and highly defined smooth finish for increased comfort.

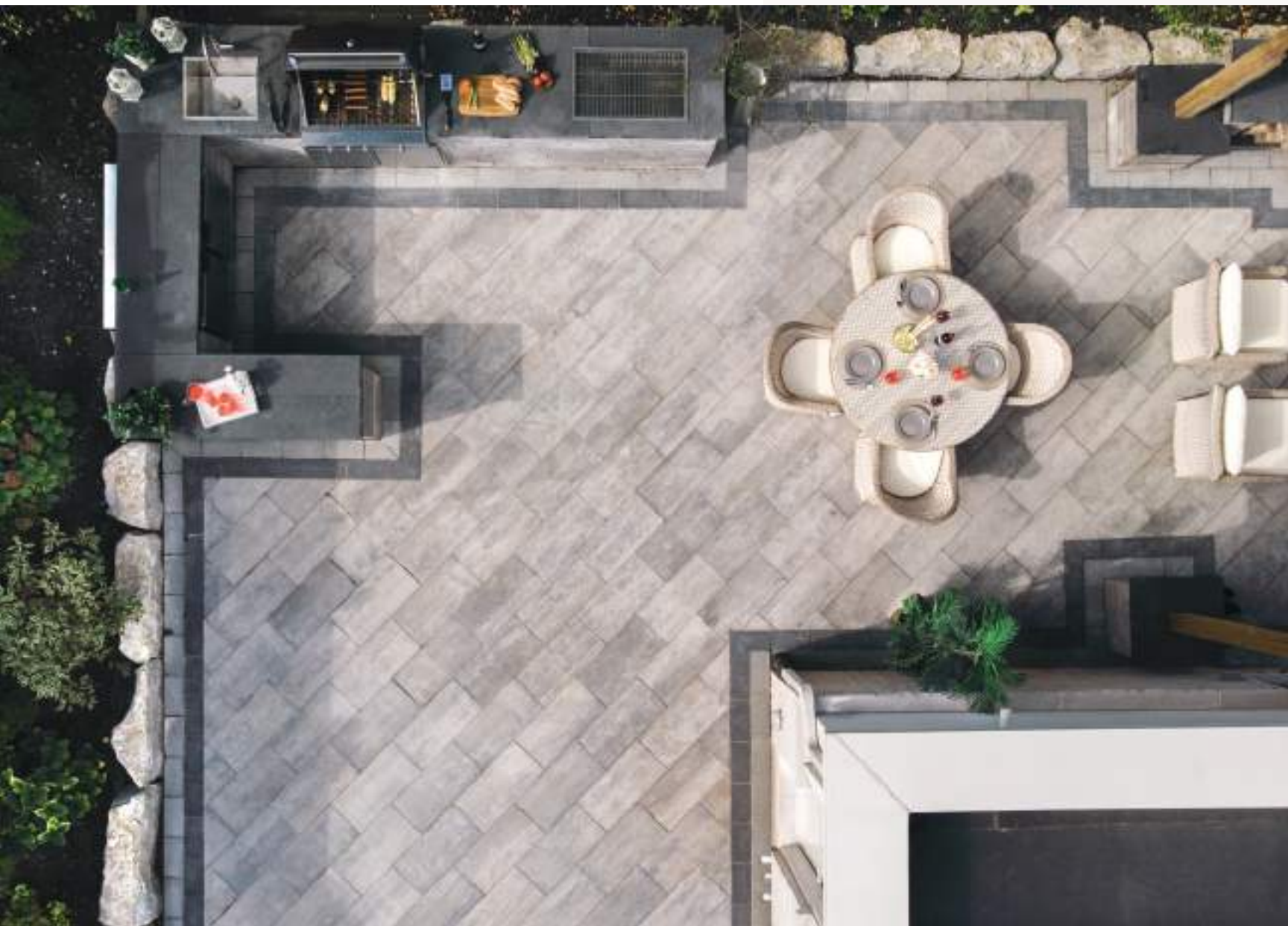


— We have a curated product line

Today's landscapes are thoughtfully and creatively built for living, working and playing, and bring together form and function for a quality outdoor experience. No matter what budgets or timelines await you this year, there are plenty of ways to incorporate modern tastes into hardscaping designs. Whether you're planning a full outdoor revamp, or just installing a new element or two, selecting the right product can make all the difference. We make it less overwhelming by providing a highly curated product portfolio that works seamlessly together.

Flexible Solutions

Open to exploring fresh options but just one step at a time? Then porcelain pavers can be a good transitional product. Interested in being environmentally conscious? Permeable pavers offer some great advantages for water management and conservation. Looking to stand out? Mixing colours and textures can create more geometric patterns, adding touches of personality to otherwise uniform spaces.



Combining Quality Hardscape Materials is the best way to create your dream landscape.

One of the most common questions we get from customers purchasing hardscape products is how they will wear over time. Our recent technological advancements provide layers of enriched surfaces and colour, bringing product aesthetics and performance to the next level.

Form

Contrast with shapes and textures to create a more rustic or natural topography.



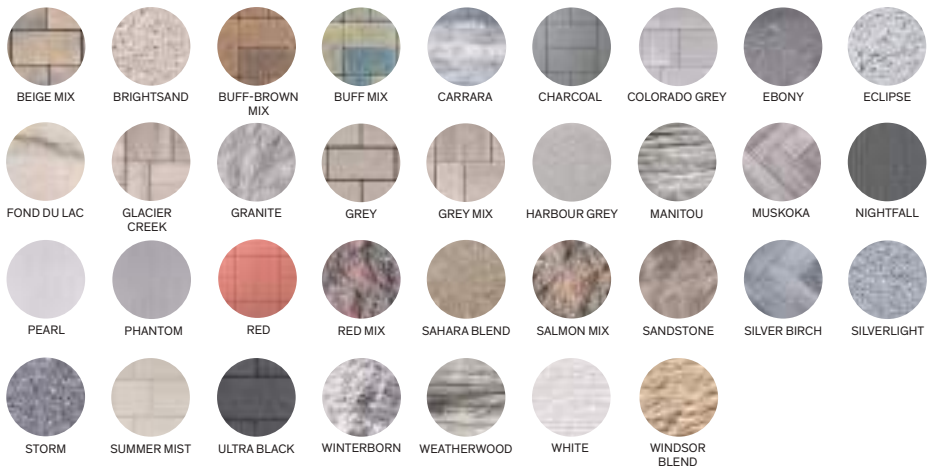
Scale

Combining various sizes draws attention to key areas in your landscape.



Colour

Lighter colours can make a landscape seem larger, while darker colours make large expanses feel more intimate. Mix the two to create areas of personality and warmth.



Texture

With a variety of surface textures to choose from, we have your landscape style covered. Make a bold statement by combining different product textures in your design to create visual interest.





Arlington

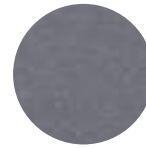
With a smooth contemporary finish, the single-size Arlington wall will stand out in any landscape design. Add some contrast with a pop of texture by installing it with our Hazelton wall.



COLORADO GREY



GREY MIX



NIGHTFALL



SUMMER MIST

New for 2022

Take a look at what's new for the 2022 season. We are constantly pushing the edge of product design, to see all our new products visit bestwaystone.com/newproducts



Barnbeam

If you're looking for the rustic beauty of wood but desire the durability of concrete, meet the Barnbeam wall. Available in an exclusive colour, you won't want to miss out on this beautiful addition to your landscape.



WEATHERWOOD



Riverton

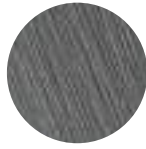
The vivid textures of Riverton are inspired by the ripples left in water. This 60mm slab is ideal for any patio, poolside or walkway application.



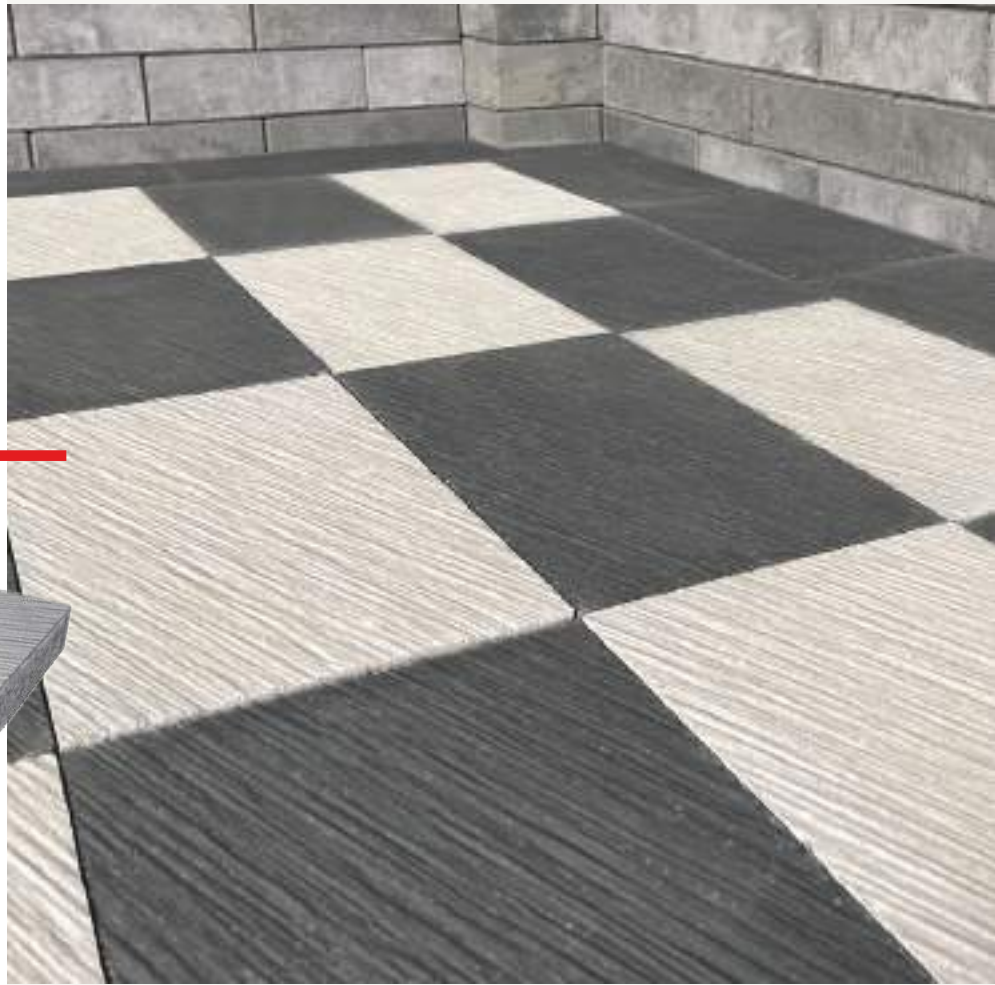
HARBOUR GREY



PEARL



ULTRA BLACK



NANOBLAST

Spectra

The new 24" x 24" Spectra slab will look sharp on any patio, poolside, or rooftop application. Made with our new Nanoblast technology giving this modern slab a unique surface texture and soft touch finish.



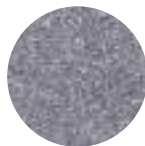
BRIGHTSAND



ECLIPSE



SILVERLIGHT



STORM



2022 Outdoor Elements Collection

Adding a little heat adds a whole new element to an outdoor space. Whether you are a cooking enthusiast or like to relax by a fireplace, our stone-based features can give your outdoor lifestyle its spark.

Scan the QR codes or visit bestwaystone.com/outdoorelements for more information and to see our entire outdoor elements collection.

Forno Antico Pizza Oven and Storage Unit



• ALL-INCLUSIVE EASY ASSEMBLY •
• ALL IN ONE KIT •



OVEN COLOURS



CHARCOAL



COPPER

STORAGE UNIT COLOURS



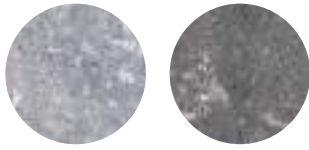
GREY



ULTRA BLACK
ACCENT



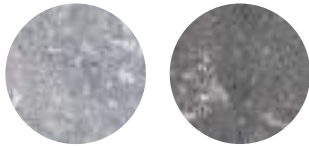
Antico Fireplace with Antico Storage Unit



GREY MIX WITH ULTRA BLACK ACCENT



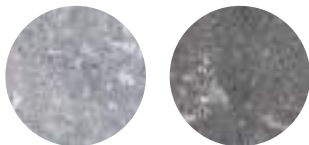
Antico Grill Surround



GREY MIX WITH ULTRA BLACK ACCENT



Antico Bar Counter



GREY MIX WITH ULTRA BLACK ACCENT



Rockton Fire Pit



MANITOU BLEND



FOND DU LAC



Belvedere Fire Pit



MANITOU BLEND



FOND DU LAC



Antico Fire Pit



GREY MIX



Garden Lock Fire Pit



BEIGE MIX



GREY MIX



WINTERBORN



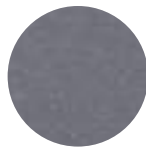
Soho Fire Pit



CARRARA



GLACIER CREEK



ULTRA BLACK



— Live. Work. Play.

Whatever the purpose,
Best Way Stone
brings it to life.

2022 Lookbook

Yes, a well-designed outside space not only adds property value, it creates a sense of joy every time you return home. The past few years homeowners have found creative ways to build high-impact front entrances and restful backyard retreats that are built to last so they can be used and enjoyed through all the seasons year-after-year.

Here are a few of our favourites.



VENTURA (CARRARA)
& CORSO (ULTRA BLACK)
PAGES 15-17



VENTURA (CARRARA)
CORSO (ULTRA BLACK)
ANTICO STACKER (GREY MIX)



**ANTICO STACKER (GREY MIX)
OUTDOOR KITCHEN**





CORSO (ULTRA BLACK) & TREVISTA 80
SMOOTH (GLACIER CREEK)
PAGES 18-19



TREVISTA 80 SMOOTH
(GLACIER CREEK)



CORSO (ULTRA BLACK)

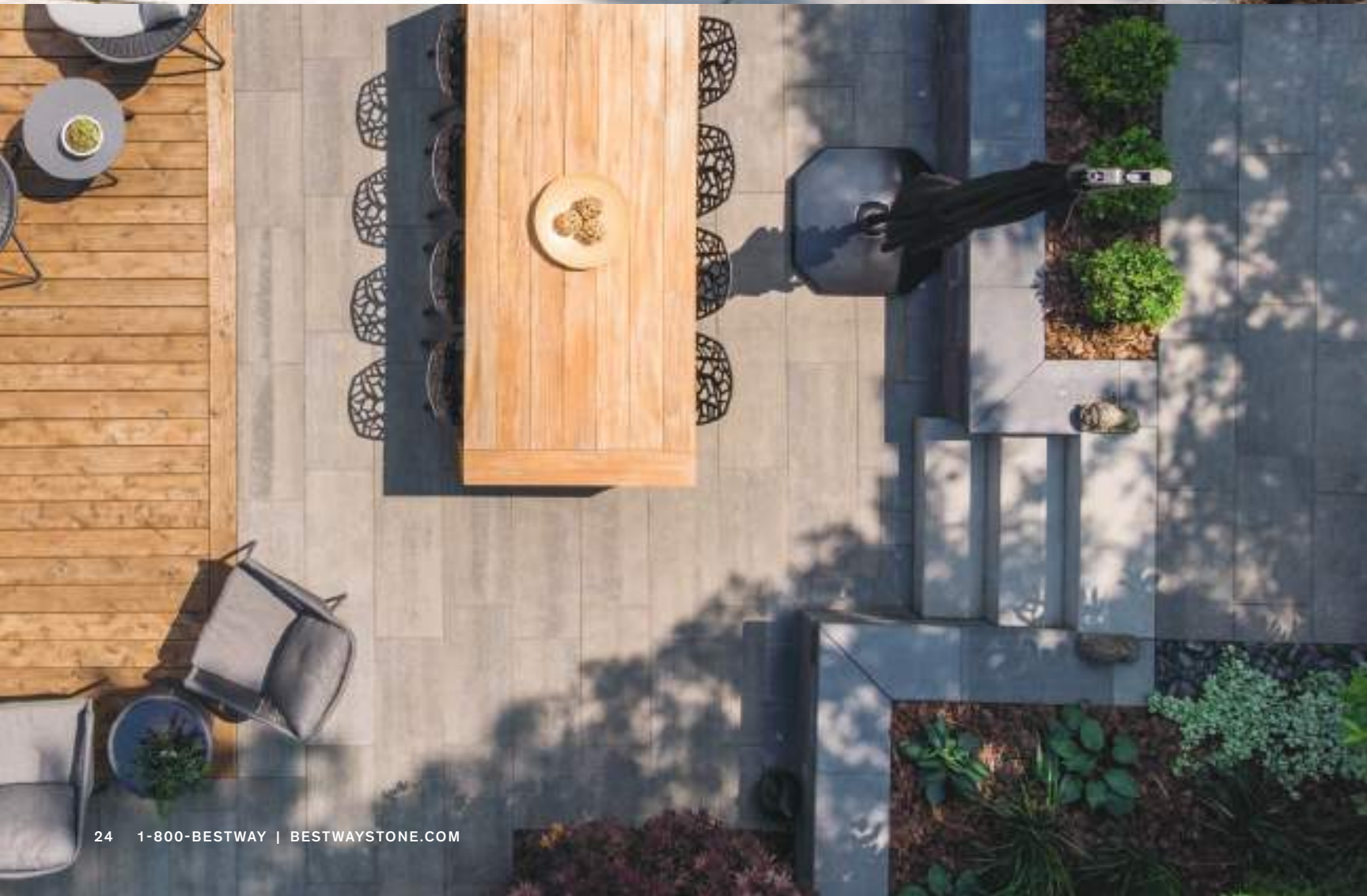




AVARI (GREY MIX), SOHO (GREY MIX),
IKON (GREY) & SOPRA (ULTRA BLACK)
PAGES 22-25



**SOHO (GREY MIX) &
SOPRA (ULTRA BLACK)**





AVARI SLABS (GREY MIX)
SOHO WALL (GREY MIX)
SOPRA COPING (ULTRA BLACK)



TREVISTA 50 SMOOTH (GLACIER CREEK)

26 | 1-800-BESTWAY | BESTWAYSTONE.COM





BALSAM (GLACIER CREEK)
PAGES 28-29





**AVARI (GLACIER CREEK)
& SOHO (ULTRA BLACK)**
PAGES 30-31





TREVISTA 50 SMOOTH (CARRARA)

32 1-800-BESTWAY | BESTWAYSTONE.COM



SOHO (CARRARA)



SOHO (CARRARA)



**AVARI (GLACIER CREEK)
& SOHO FIREPLACE (GLACIER CREEK)**



TREVISTA 80 SMOOTH (GLACIER CREEK)



SOHO FIREPLACE (GLACIER CREEK)



Pavers

- 38 MANHATTAN PLANK
- 40 TREVISTA 80 SMOOTH
- 42 TREVISTA 80 TEXTURED
- 44 RICHMOND 80
- 45 ADELAIDE 80
- 46 ASHFORD
- 47 STRADA NOVA
- 47 CORSO
- 48 MODERNA
- 49 ARDESIA
- 49 STANDARD & DOUBLE STANDARD



GLACIER CREEK

Manhattan Plank | SIGNATURE SERIES



UNITS

A



6.50" x 4.33" x 3.15"
165mm x 110mm x 80mm

B



10.83" x 4.33" x 3.15"
275mm x 110mm x 80mm

C



12.99" x 4.33" x 3.15"
330mm x 110mm x 80mm

D



17.32" x 4.33" x 3.15"
440mm x 110mm x 80mm

E



8.66" x 6.50" x 3.15"
220mm x 165mm x 80mm

F



12.99" x 6.50" x 3.15"
330mm x 165mm x 80mm

G



17.32" x 6.50" x 3.15"
440mm x 165mm x 80mm

*ALL UNITS PACKAGED TOGETHER.
A TO E IS 2:1 TO F AND G.

COLOURS



GLACIER CREEK



GREY MIX



ULTRA BLACK



GLACIER CREEK AND GREY MIX



GLACIER CREEK

40 1-800-BESTWAY | BESTWAYSTONE.COM

Trevista 80 Smooth | SIGNATURE SERIES



UNITS



19.5" x 13" x 3.15"
495mm x 330mm x 80mm



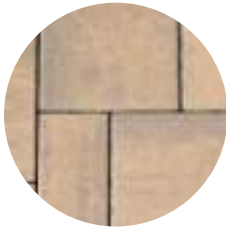
13" x 13" x 3.15"
330mm x 330mm x 80mm



6.5" x 13" x 3.15"
165mm x 330mm x 80mm

*ALL SIZES SOLD AND PACKAGED IN A 1:2:2 RATIO

COLOURS



BEIGE MIX



CARRARA



GLACIER CREEK



GREY MIX



GLACIER CREEK



**GLACIER CREEK WITH
RICHMOND ULTRA BLACK IN-LAY**

Trevista 80 Textured | SIGNATURE SERIES



UNITS



19.5" x 13" x 3.15"
495mm x 330mm x 80mm



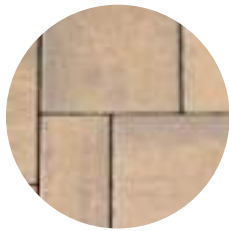
13" x 13" x 3.15"
330mm x 330mm x 80mm



6.5" x 13" x 3.15"
165mm x 330mm x 80mm

*ALL SIZES SOLD AND PACKAGED IN A 1:2:2 RATIO

COLOURS



BEIGE MIX



CARRARA



GLACIER CREEK



GREY MIX



GLACIER CREEK WITH RICHMOND ULTRA BLACK IN-LAY

Richmond 80 | SIGNATURE SERIES



UNIT



6.5" x 13" x 3.15"
165mm x 330mm x 80mm

COLOURS



GLACIER CREEK



GREY MIX



ULTRA BLACK



GREY MIX WITH CORSO ULTRA BLACK IN-LAY

Adelaide 80 | SIGNATURE SERIES



UNIT



6.5" x 13" x 3.15"
165mm x 330mm x 80mm

COLOURS



GLACIER CREEK



GREY



ULTRA BLACK



ULTRA BLACK

Ashford | CLASSIC SERIES



UNITS



13" x 8.66" x 2.36"
320mm x 220mm x 60mm



8.66" x 8.66" x 2.36"
220mm x 220mm x 60mm



8.66" x 4.33" x 2.36"
220mm x 110mm x 60mm

COLOURS



COLORADO GREY



GREY MIX



SUMMER MIST



GREY MIX

Strada Nova | CLASSIC SERIES



UNITS



JUMBO

10.28" x 13.78" x 2.75"
261mm x 350mm x 70mm



LARGE

8.19" x 6.88" x 2.75"
208mm x 175mm x 70mm



SMALL

4.13" x 6.88" x 2.75"
103mm x 175mm x 70mm

*ALL SIZES SOLD AND
PACKAGED SEPARATELY

COLOURS



BEIGE MIX



GREY MIX



ULTRA BLACK



GREY MIX

Corso | CLASSIC SERIES



UNITS



9.96" x 5.24" x 2.75"
253mm x 133mm x 70mm



7.60" x 5.24" x 2.75"
193mm x 133mm x 70mm



5.24" x 5.24" x 2.75"
133mm x 133mm x 70mm

*ALL SIZES SOLD AND PACKAGED
TOGETHER IN A 1:1:1 RATIO

COLOURS



GREY MIX



ULTRA BLACK



ULTRA BLACK

Moderna | CLASSIC SERIES



UNITS

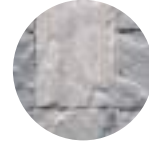


16" x 8/12" x 2.75"
405mm x 205/305mm x 70mm

COLOURS



BEIGE MIX



GREY MIX

*ALL UNITS SOLD AND PACKAGED TOGETHER (1 BUNDLE LAYER SHOWN ABOVE)



GREY MIX

Ardesia | CLASSIC SERIES



UNITS



19.29" x 10.41" x 2.75"
490mm x 265mm x 70mm

*ALL UNITS SOLD AND PACKAGED TOGETHER
(1 BUNDLE LAYER SHOWN ABOVE)

COLOURS



BEIGE MIX



GREY MIX



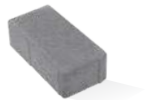
BEIGE MIX

Standard & Double Standard

| CLASSIC SERIES



UNITS



STANDARD

3.93" x 7.87" x 2.36"
100mm x 200mm x 60mm



DOUBLE STANDARD

7.87" x 7.87" x 2.36"
200mm x 200mm x 60mm

COLOURS



BUFF MIX



BUFF-BROWN MIX



GREY MIX



RED MIX



SALMON MIX



GREY



CHARCOAL



RED

*DOUBLE STANDARD NOT AVAILABLE IN
BUFF MIX, BUFF-BROWN MIX AND RED.



GREY MIX (PERMEABLE)



Slabs

- 52 VENTURA
- 54 BALSAM
- 56 OPUS
- 57 HUNTINGTON
- 57 LYRA
- 58 BW300
- 59 SPECTRA
- 60 AVARI
- 62 TREVISTA 50 SMOOTH
- 64 TREVISTA 50 TEXTURED
- 66 RICHMOND 50
- 67 ADELAIDE 50
- 68 TRESCA
- 70 FLAGSTONE
- 71 BASKETWEAVE
- 71 STANDARD PRESS
- 72 DADO CERAMICA PORCELAIN SLABS



CARRARA

Ventura | SIGNATURE SERIES



UNITS



15.67" x 23.5" x 2.36"
398mm x 597mm x 60mm

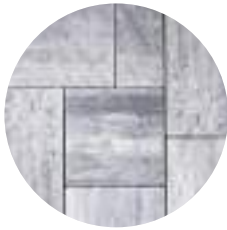


15.67" x 15.67" x 2.36"
398mm x 398mm x 60mm



7.87" x 15.67" x 2.36"
199mm x 398mm x 60mm

COLOURS



CARRARA



GLACIER CREEK



CARRARA



Balsam | SIGNATURE SERIES



UNIT



31.5" x 7.87" x 2.36"
800mm x 200mm x 60mm

COLOURS



GLACIER CREEK



MUSKOKA



SILVER BIRCH



GLACIER CREEK

Opus | SIGNATURE SERIES



UNIT



23.62" x 23.62" x 2.36"
600mm x 600mm x 60mm

COLOURS



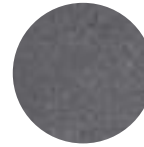
CARRARA



HARBOUR GREY



PEARL



ULTRA BLACK



CARRARA

Huntington | CLASSIC SERIES

NEW



UNITS



15.67" x 23.5" x 2.75"
398mm x 597mm x 70mm



15.67" x 15.67" x 2.75"
398mm x 398mm x 70mm



7.83" x 15.67" x 2.75"
199mm x 398mm x 70mm

COLOURS



COLORADO GREY



GREY MIX



SUMMER MIST



SLABS

COLORADO GREY

Lyra | SIGNATURE SERIES



UNIT



11.81" x 23.62" x 2.36"
300mm x 600mm x 60mm

COLOURS



CARRARA



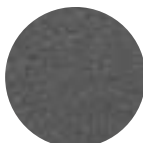
HARBOUR GREY



NIGHTFALL



PEARL



ULTRA BLACK



CARRARA

BW300 | SIGNATURE SERIES



UNIT



11.81" x 23.62" x 2.36"
300mm x 600mm x 60mm

COLOURS



NIGHTFALL



PEARL



PHANTOM

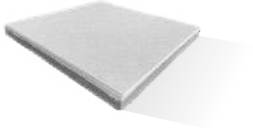


PEARL & PHANTOM

Spectra | ENHANCED SERIES



UNIT

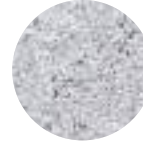


23.62" x 23.62" x 2"
600mm x 600mm x 50mm

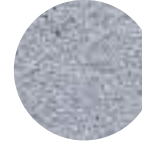
COLOURS



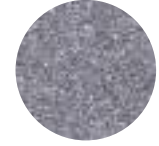
BRIGHTSAND



ECLIPSE



SILVERLIGHT



STORM



STORM



GLACIER CREEK

60 | 1-800-BESTWAY | BESTWAYSTONE.COM

Avari | ENHANCED SERIES

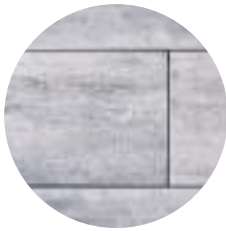


UNIT



28" x 14" x 2"
710mm x 355mm x 50mm

COLOURS



CARRARA
(DESIGNLOC ONLY)



GLACIER CREEK



GREY MIX



CARRARA



GLACIER CREEK

Trevista 50 Smooth | SIGNATURE SERIES



UNITS



19.5" x 13" x 2"
495mm x 330mm x 50mm



13" x 13" x 2"
330mm x 330mm x 50mm



6.5" x 13" x 2"
165mm x 330mm x 50mm

*ALL SIZES SOLD AND PACKAGED TOGETHER IN A 1:2:2 RATIO

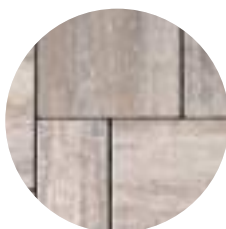
COLOURS



BEIGE MIX



CARRARA



GLACIER CREEK



GREY MIX



GLACIER CREEK



GLACIER CREEK

64 | 1-800-BESTWAY | BESTWAYSTONE.COM

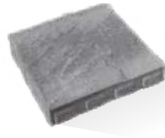
Trevista 50 Textured | SIGNATURE SERIES



UNITS



19.5" x 13" x 2"
495mm x 330mm x 50mm



13" x 13" x 2"
330mm x 330mm x 50mm



6.5" x 13" x 2"
165mm x 330mm x 50mm

*ALL SIZES SOLD AND PACKAGED TOGETHER IN A 1:2:2 RATIO

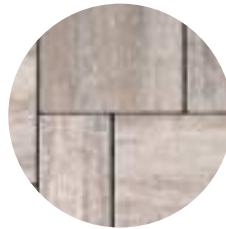
COLOURS



BEIGE MIX



CARRARA



GLACIER CREEK



GREY MIX



GREY MIX

Richmond 50 | SIGNATURE SERIES



UNIT



6.5" x 13" x 2"
165mm x 330mm x 50mm

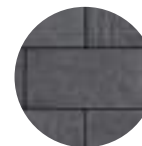
COLOURS



GLACIER CREEK



GREY MIX



ULTRA BLACK



GREY MIX

Adelaide 50 | SIGNATURE SERIES



UNIT



6.5" x 13" x 2"
165mm x 330mm x 50mm

COLOURS



GLACIER CREEK



GREY



ULTRA BLACK



GLACIER CREEK



GLACIER CREEK

68 1-800-BESTWAY | BESTWAYSTONE.COM

Tresca | ENHANCED SERIES



UNITS



19.68" x 19.68" x 2"
508mm x 508mm x 50mm



9.84" x 19.68" x 2"
254mm x 508mm x 50mm



9.84" x 9.84" x 2"
254mm x 254mm x 50mm

*ALL SIZES SOLD AND PACKAGED SEPARATELY

COLOURS



GLACIER CREEK



GREY MIX



GLACIER CREEK

Flagstone | CLASSIC SERIES



UNIT



24 x 24

23.62" x 23.62" x 1.57"

600mm x 600mm x 40mm

COLOURS



GREY



NIGHTFALL



GREY

Basketweave | CLASSIC SERIES



UNITS



24 x 30

23.62" x 29.52" x 1.57" (2" or 2.5")
600mm x 750mm x 40mm (50 or 65)

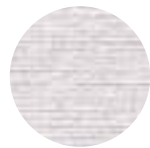
24 x 24

23.62" x 23.62" x 1.57"
600mm x 600mm x 40mm

12 x 24

11.81" x 23.62" x 1.57"
300mm x 600mm x 40mm

COLOUR



WHITE

2" AND 2.5" THICKNESS ARE
SPECIAL ORDER ITEMS.



Standard Press | CLASSIC SERIES



UNITS*



24 x 30

23.62" x 29.52" x 1.57"
600mm x 750mm x 40mm
*Only available in grey

16 x 16

15.75" x 15.75" x 1.57"
400mm x 400mm x 40mm
*Only available in red and grey

12 x 24

11.81" x 23.62" x 1.57"*
300mm x 600mm x 40mm
*Only available in grey

24 x 24

23.62" x 23.62" x 1.57" (2" or 2.5")
600mm x 600mm x 40mm (50 or 65)
*Available in all colours,
2" & 2.5" thickness in grey only and are
special order items

COLOURS



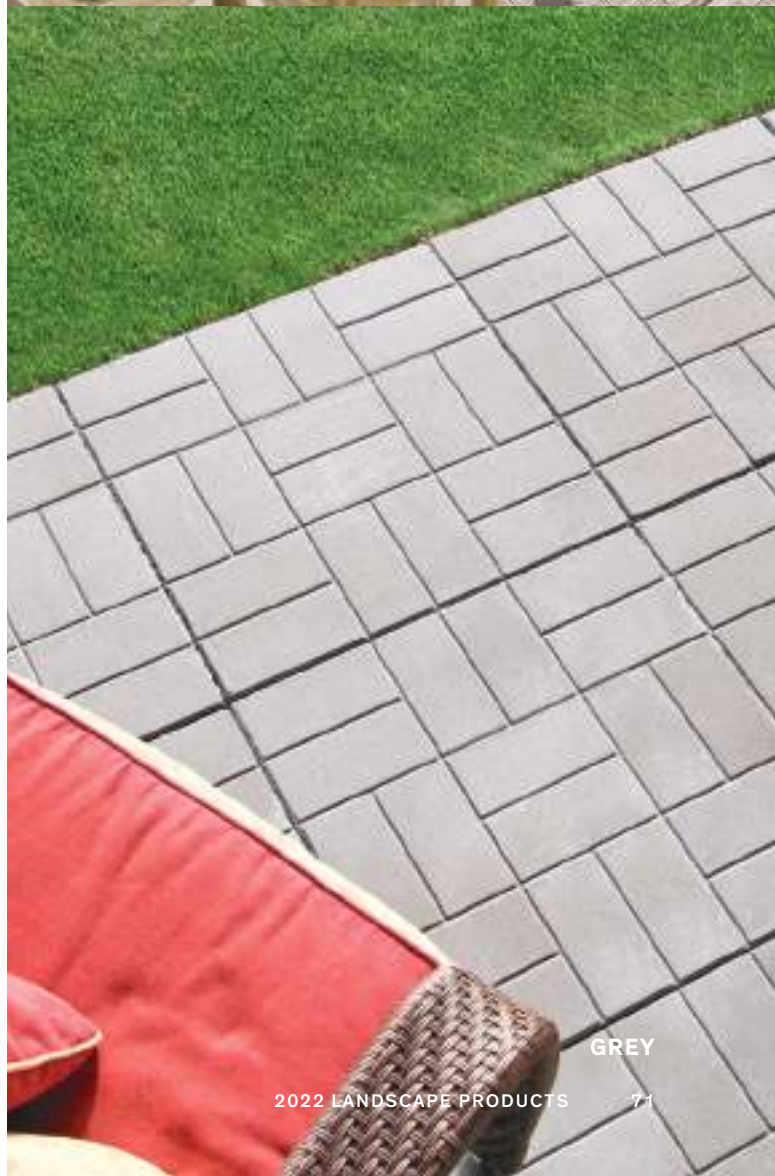
CHARCOAL



GREY




RED





UNIVERSAL OAK
16" X 32" (40.5 X 81 CM)

Dado Ceramic Porcelain Slabs

- EASY TO INSTALL, LIGHT WEIGHT
- FROST AND MOLD RESISTANT
- EASY TO CLEAN
- DESIGNED AND MADE IN ITALY 

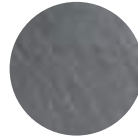


UNITS



23.62" x 23.62" x 0.78"
600mm x 600mm x 20mm

COLOURS



COUNTRY BLACK SLATE



COUNTRY GREY SLATE



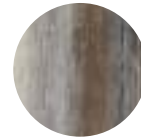
SCOUT WHITE



15.95" x 31.89" x 0.78"
405mm x 810mm x 20mm



JASMINE



UNIVERSAL OAK



SCOUT WHITE



Walls

- 76 BARNBEAM
- 77 ARLINGTON
- 78 SOHO
- 80 HAZELTON
- 81 ANTICO STACKER
- 82 GARDEN LOCK
- 83 PARKWALL
- 84 ROCKTON
- 85 BELVEDERE WALL & COPING
- 86 IKON
- 87 RIDGEWALL SRW SYSTEM

Barnbeam | SIGNATURE SERIES

NEW

UNIT



40" w x 6" d x 8" h
1015mm x 152mm x 203mm

COLOUR



WEATHERWOOD



WEATHERWOOD

Arlington | CLASSIC SERIES



UNITS



UNIT

15.75" w x 8.85" d x 4.92" h
400mm x 225mm x 125mm



CORNER

15.75" w x 8.85" d x 4.92" h
400mm x 225 mm x 125mm



CURB

15.75" w x 8.85" d x 4.92" h
400mm x 225mm x 125mm



COPING

15.75" w x 10.23" d x 2.36" h
400mm x 260mm x 60mm

THE ARLINGTON WALL WORKS SEAMLESSLY WITH THE GARDEN LOCK AND HAZELTON WALL SYSTEMS.

COLOURS



GREY MIX



NIGHTFALL



COLORADO GREY



SUMMER MIST



NIGHTFALL WITH HAZELTON ACCENT



**SOHO WALL (GLACIER CREEK)
AVARI (GLACIER CREEK)
ADELAIDE BORDER & ACCENT
(GREY & ULTRA BLACK)**

Soho | SIGNATURE SERIES



UNITS



350 BLOCK

13.78" w x 8.85" d x 3.94" h
350mm x 225mm x 100mm



450 BLOCK

17.72" w x 8.85" d x 3.94" h
450mm x 225mm x 100mm



550 BLOCK

21.65" w x 8.85" d x 3.94" h
550mm x 225mm x 100mm



650 BLOCK

25.59" w x 8.85" d x 3.94" h
650mm x 225mm x 100mm



CORNER

13.78" w x 8.85" d x 3.94" h
350mm x 225mm x 100mm

*ALL BLOCK UNITS ARE SOLD AND PACKAGED TOGETHER IN AN EQUAL RATIO

COLOURS



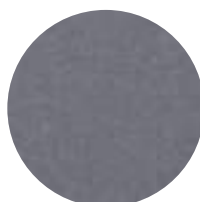
CARRARA



GLACIER CREEK



GREY MIX



ULTRA BLACK



GLACIER CREEK

Hazelton | CLASSIC SERIES

UNITS



BLOCK

11.81" w x 8.85" d x 4.92" h
300mm x 225mm x 125mm



CORNER

12.79" w x 6.88" d x 4.92" h
325mm x 175mm x 125mm

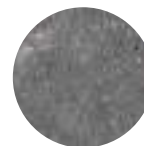
COLOURS



BEIGE MIX



GREY MIX



ULTRA BLACK

*BLOCK AND CORNER UNITS SOLD AND PACKAGED SEPARATELY
USE MONTANA, RIVIERA, GARDEN LOCK OR ARLINGTON COPING FOR IDEAL FINISH



BEIGE MIX

Antico Stacker | CLASSIC SERIES

UNIT



7.87" w x 11.81" d x 3.93" h
200mm x 300mm x 100mm

COLOURS



BEIGE MIX



GREY MIX



ULTRA BLACK



GREY MIX

Garden Lock | CLASSIC SERIES

UNITS

TRIPLE



14.96" w x 8.85" d x 4.92" h
380mm x 225mm x 125mm



9.84" w x 8.85" d x 4.92" h
250mm x 225mm x 125mm



7.48" w x 8.85" d x 4.92" h
190mm x 225mm x 125mm



COPING
15.74" w x 10.23" d x 2.95" h
400mm x 260mm x 75mm



WEDGE
8.07"/5.31" w x 8.85" d x 4.92" h
205/135mm x 225mm x 125mm



WEDGE COPING
8.23"/5.17" w x 10.23" d x 2.95" h
209/131mm x 260mm x 75mm



CORNER
13.46" w x 8.85" d x 4.92" h
342mm x 225mm x 125mm

COLOURS



BEIGE MIX



GREY



GREY MIX



ULTRA
BLACK
(COPING ONLY)



WINTERBORN

*TRIPLE SOLD AND PACKAGED TOGETHER IN A 1:1:1 RATIO | CORNER UNIT NOW AVAILABLE AND SOLD SEPARATELY



GREY MIX

Parkwall | CLASSIC SERIES

UNITS



REGULAR

7.87" w x 11.61" d x 5.9" h
200mm x 295mm x 150mm



TAPERED

7.87" w (7" w) x 11.61" d x 5.9" h
200mm (177) x 295mm x 150mm



CORNER

7.87" w x 11.61" d x 5.9" h
200mm x 295mm x 150mm



COPING

23.62" w x 11.81" d x 2.95" h
600mm x 300mm x 75mm

COLOURS



BEIGE MIX



GREY



GREY MIX



ULTRA BLACK
(COPING ONLY)



WINTERBORN

*ALL SIZES SOLD AND PACKAGED SEPARATELY. TAPERED AVAILABLE IN SELECT COLOURS.



WINTERBORN WITH
ULTRA BLACK COPING

Rockton | ROSETTA SERIES

UNITS



42" w x 10.5" d x 6" h
1067mm x 267mm x 152mm



30" w x 10.5" d x 6" h
762mm x 267mm x 152mm



21" w x 10.5" d x 6" h
533mm x 267mm x 152mm



12" w x 10.5" d x 6" h
304mm x 267mm x 152mm



CORNER

21" w x 10.5" d x 6" h
533mm x 267mm x 152mm

COLOURS



FOND DU LAC



MANITOU BLEND

*CORNER UNIT SOLD AND PACKAGED SEPARATELY



MANITOU BLEND

Belvedere Wall & Coping | ROSETTA SERIES

UNITS



BLOCK

6.02"/4.02"w x 9.02"d x 6.02" and 2.99"h
153mm/102mm(w) x 229mm(d) x 153mm or 76mm(h)

12.01"/10"w x 9.02"d x 6.02" and 2.99"h
305mm/254mm(w) x 229mm(d) x 153mm or 76mm(h)

18.03"/15.98"w x 9.02"d x 6.02" and 2.99"h
458mm/406mm(w) x 229mm(d) x 153mm or 76mm(h)



CORNER

15" x 14.02"w x 9.02"d
6.02" or 2.99"h



COPING

6.02"/4.02"w x 10.24"d x 2.24"h
153mm/102mm(w) x 260mm(d) x 57mm(h)

12.01"/10"w x 10.24"d x 2.24"h
305mm/254mm(w) x 260mm(d) x 57mm(h)

18.03"/15.98"w x 10.24"d x 2.24"h
458mm/406mm(w) x 260mm(d) x 57mm(h)

COLOURS



MANITOU BLEND



WINDSOR BLEND



WINDSOR BLEND

Ikon | CLASSIC SERIES

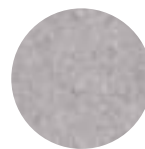
UNIT



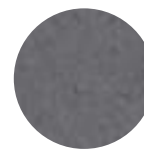
BLOCK UNIT

39.4" w x 14" d x 6.7" h
1000mm x 355mm x 170mm

COLOURS



GREY



ULTRA BLACK



GREY & ULTRA BLACK

Ridgewall SRW System | CLASSIC SERIES

UNITS



BLOCK UNIT

39.4" w x 17.1" d x 7.68" h
1000mm x 435mm x 195mm



90° CORNER UNIT

36.9" w x 17.1" d x 7.68" h
937.5mm x 435mm x 195mm



45° CORNER UNIT

39.4" w x 17.1" d x 7.68" h
1000mm x 435mm x 195mm



COPING UNIT

39.4" w x 19.7" d x 7.68" h
1000mm x 500mm x 195mm

COLOUR



GREY (BLOCK & COPING)

FOR MORE INFORMATION VISIT:
BESTWAYSTONE.COM/RIDGEWALL

ENGINEERING SERVICES AVAILABLE



GREY (BLOCK & COPING)



Steps, Caps & Curbs

- 90 IKON STEP
- 91 RIDGE STEP
- 92 CAMDEN STEP
- 93 SOPRA COPING
- 94 MONTANA CAP
- 95 RIVIERA CAP
- 96 BAROLLO ROUND EDGE COPING
- 97 PARKWALL COLUMN CAP
- 97 BULLNOSE COLUMN CAP
- 98 DIMENSIONAL COPING
- 98 ANTICO CURB
- 99 GARDEN CURB
- 99 DRIVEWAY CURB

Ikon Step

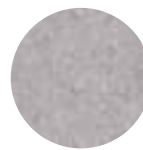
- MODERN SMOOTH FINISH
- ALLOWS FOR 14" STEP TREAD

UNIT

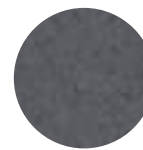


39.4" w x 14" d x 6.7" h
1000mm x 355mm x 170mm

COLOURS



GREY



ULTRA BLACK

*CAN BE USED AS A COPING FOR THE IKON WALL SYSTEM



GREY

Ridge Step

UNIT



39.4" w x 19.7" d x 7.68" h
1000mm x 500mm x 195mm

COLOURS



GREY



GREY MIX

*CAN BE USED FOR COPING FOR RIDGEWALL SRW SYSTEM



GREY MIX

Camden Step

UNITS



48" w x 16" d x 6" h
1219mm x 406mm x 152mm



72" w x 16" d x 6" h
1829mm x 406mm x 152mm



14" FILLER UNIT



28" FILLER UNIT

COLOUR



EBONY



EBONY

Sopra Coping

UNIT



28" w x 14" d x 2.36" h
710mm x 355mm x 60mm

COLOURS



GREY



ULTRA BLACK



ULTRA BLACK

Montana Cap

UNITS



WALL CAP

21.3" w x 10.6" d x 2" h
540mm x 270mm x 50mm



COLUMN CAP

23.6" w x 23.6" d x 3" h
600mm x 600mm x 75mm

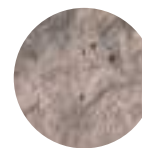
COLOURS



EBONY



GRANITE



SANDSTONE



EBONY

Riviera Cap

UNIT



23.6" w x 11.8" d x 2.36" h
600mm x 300mm x 60mm

COLOURS



EBONY



GRANITE



SANDSTONE



EBONY

Barollo Round Edge Coping

UNIT



9.84" w x 12.46" d x 2.95" h
250mm x 317mm x 75mm

COLOURS



GREY



ULTRA BLACK



ULTRA BLACK

Parkwall Column Cap

UNIT



23.62" w x 23.62" d x 2.95" h
600mm x 600mm x 75mm

COLOURS



GREY



SAHARA BLEND



ULTRA BLACK



GREY

Bullnose Column Cap

UNIT



23.62" w x 23.62" d x 2.95" h
600mm x 600mm x 75mm

COLOURS



EBONY



GREY



SAHARA BLEND



EBONY

Dimensional Coping

UNITS



18" COPING

18" w x 13" d x 2.5" h
450mm x 330mm x 65mm



24" COPING

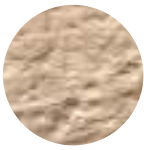
24" w x 13" d x 2.5" h
600mm x 330mm x 65mm

*ALL SIZES SOLD AND PACKAGED TOGETHER

COLOURS



MANITOU BLEND



WINDSOR BLEND

Antico Curb

UNIT



15.75" w x 3.95" d x 5.91" h
400mm x 100mm x 150mm

COLOURS



BEIGE MIX



GREY MIX



WINDSOR



GREY MIX

Garden Curb

UNIT



31.5"w x 3.95"d x 5.91"h
800mm x 100mm x 150mm

COLOURS



CHARCOAL



GREY



RED



GREY

Driveway Curb

UNIT



39.4"w x 5.9"d x 5.9"h
1000mm x 150mm x 150mm

COLOURS



CHARCOAL



GREY



RED



CHARCOAL



Enviro

102 MODERNA PERMEABLE PAVER SYSTEM

103 WHITE SOLAR REFLECTIVE ROOFTOP PAVER

Moderna Permeable Paver System

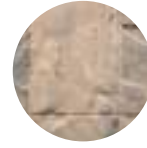


UNIT



16" x 8/12" x 2.75"
405mm x 205/305mm x 70mm

COLOURS



BEIGE MIX



GREY MIX

About Moderna

Most permeable pavers are simple in their design and finished product, but this is where engineering and style combine. The Moderna Paving Stone, a decorative, innovative and versatile single-shaped paving stone, that provides stormwater control without sacrificing style or design.

Following PICP (Permeable Interlocking Concrete Pavement) standards, the Moderna Paving Stone provides a complete system, helping to eliminate runoff.

BENEFITS OF MODERNA

- eliminates surface runoff
- system design recharges groundwater
- reduces need for snow removal
- provides contaminant filtration
- supported by paver lifetime guarantee
- earn LEED® credits



GREY MIX



White Solar Reflective Rooftop Pavers

UNIT



UNIT SIZE

23.62" x 23.62" x 2"
600mm x 600mm x 50mm

65MM AVAILABLE VIA SPECIAL ORDER

PEDESTALS AVAILABLE



AVAILABLE IN MULTIPLE SIZES AND HEIGHT ADJUSTMENTS.

COLOUR



SR WHITE

LEED[®]ing the Way

Best Way Stone is committed to creating sustainable products that will aid in the future development of our prospering communities. Our White Solar Reflective (SR) Rooftop Paver not only aids in solar reflectivity but can also contribute to LEED[®] project certification.



WHITE

— Hardscaping Accessories

Best Way Stone has curated a collection of accessories to finish your outdoor space. This series consists only of the products we know and trust in our landscape designs – so you can trust them in yours, too.

JOINT SAND



Specially formulated mixture of graded sand and high-performance polymer binding agent designed for all paver and natural stone joints up to 4" (10 cm). It will remain stable and flexible in the most extreme weather conditions and freeze/thaw cycles when properly installed.

Sable Marco
Evolution Polymeric



SEALERS & CLEANERS



Seal King paving stone sealer

- water and acrylic based
- high and satin gloss finish
- efflorescence remover
- oil and grease remover
- seal grip
- sealer remover



Kimbol sealer

- water and acrylic based
- high and satin gloss finish
- efflorescence remover
- oil and grease remover



TOOLS, ACCESSORIES & OTHER

Adhesives

- butyl tape
- landscape adhesive tubes

Aggregates

- 1/4" chip
- 3/8" gravel (loose)
- 3/4" crusher run (bags only)
- 3/4" gravel (bags only)
- brick sand
- concrete sand
- limestone screening

Edge Restraints

- Brickstop aluminum edge restraint
- Brickstop Beast plastic edge restraint
- Snapedge plastic edge restraint
- spikes

Fabrics

- construction fabric
- geogrid tie-back
- landscape fabric

Tools & Accessories

- brooms
- caulking guns
- gloves
- hand tampers
- mallets/hammers
- Solar lights
- levels
- plate tampers
- shovels
- string lines
- wheel barrows



PRECAST CONCRETE

- parking lot bumper curbs (96" x 10" x 6") (96" x 12" x 8")
- simplicity steps (36"w / 48"w)
- chimney caps
- keystones
- splash pads
- step risers
- window sills

[Visit bestwaystone.com for more information.](http://bestwaystone.com)



Care & Considerations



Setting a base

The quality of work put into establishing a solid foundation is vital to the overall performance of your landscape design.

When properly constructed, a solid base foundation helps prevent paver settling, shifting, and water accumulation. Use of edge restraints and jointing sand is recommended as best practice by ICPI (Interlocking Concrete Pavement Institute).

When choosing and installing jointing sand, please ensure to follow the directions given by the manufacturer. To find out more about base preparation and installation practices, visit icpi.org.

Colour distribution

When installing stone, we recommend you select a mix of materials from several different bundles to ensure a balanced distribution of surface colour textures and colour mixtures.

Always verify colours and products chosen for your concrete landscape project with your contractor or landscape designer prior to installation. Physical or printed colour samples are only representations of the chosen product. If you notice a discrepancy, notify us immediately before continuing with your project. Full installation is understood as your acceptance of the product's condition.

Concrete care

Maintaining the surface of your concrete pavers is essential to their aesthetic. Sealing your concrete pavers can enhance the colour, but it's optional as our pavers are just as durable with or without the addition of sealants. If you plan on sealing your concrete products, always follow the manufacturer's instructions for proper application.

Unfortunately, even materials as durable as concrete can scratch, chip, or stain if handled incorrectly. When compacting our pavers, ensure that a rubber membrane is added to protect textured surfaces from potential

damage. Use a rubber blade when removing snow from the surface of our pavers to prevent surface scratching and damage. Best Way Stone is not responsible for the damage left by the misuse of compaction or snow removal equipment.

Efflorescence

Efflorescence is that white, powdery substance that appears on the surface of concrete and it's a naturally occurring process. Efflorescence does not affect the structural integrity or strength of the product and will usually wear off over time – although special cleaners can be used to speed up its removal. For more information visit icpi.org.

Choosing a Contractor

Although not required, hiring a qualified contractor makes installing stone a much more efficient and less stressful experience. When hiring a qualified professional we recommend they follow industry standard guidelines.

When hiring a contractor, we recommend collecting project references and samples of previous work. Make sure they offer a comprehensive warranty, and have all the required insurance and licenses. Any contractor will understand the industry standards for installing stone – you can download a copy to these guidelines by visiting icpi.org.

Our guarantee – carved in stone

Best Way Stone Limited provides a transferable lifetime guarantee on the structural integrity of its Interlocking Paving Stone products for residential use. For complete information visit bestwaystone.com/about.



Uxbridge Outdoor Design Centre

Speak to our customer service experts to help bring your design to life. Feel free to bring samples home along with some peace of mind.

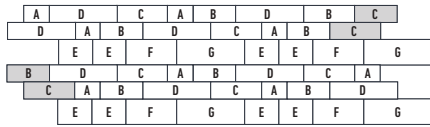


Outdoor Design Centre

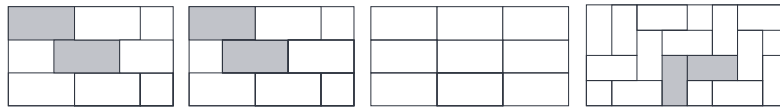
65 Anderson Boulevard
Uxbridge, ON

Pattern Guides

Manhattan Plank



Avari, BW300, Lyra and Riverton



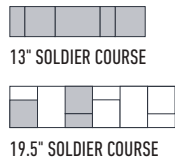
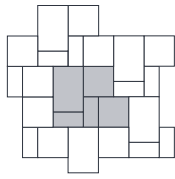
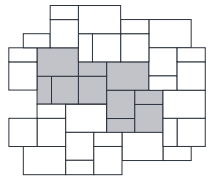
3/4 OFFSET
*FOR BEST PRACTICE

BRICK JOINT

TILE JOINT

HERRINGBONE

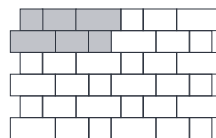
Trevista 80 & 50



13" SOLDIER COURSE

19.5" SOLDIER COURSE

Corso



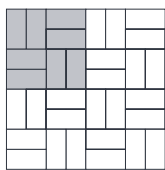
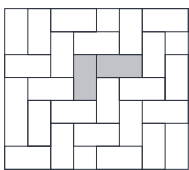
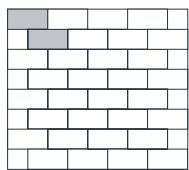
INSTALL RANDOMLY WITH A 1:1:1 RATIO

Ardesia

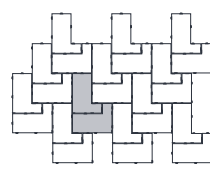


MOST RANDOM FINISH

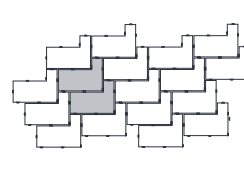
Adelaide 80 & 50 & Richmond 80 & 50



Moderna



MOST RANDOM FINISH

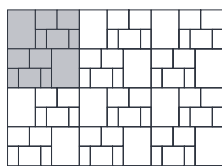


MAXIMUM PERMEABILITY

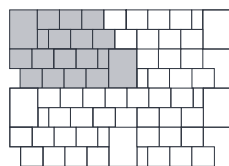


16" SOLDIER COURSE

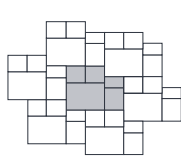
Strada Nova



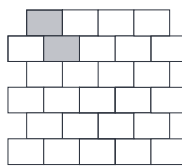
JUMBO 39%
LARGE 46%
SMALL 15%



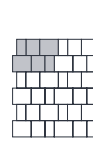
JUMBO 25%
LARGE 70%
SMALL 5%



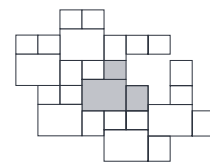
JUMBO 46%
LARGE 18%
SMALL 9%



LARGE, JUMBO OR
SMALL 100%

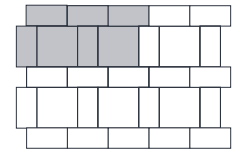
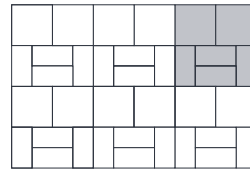
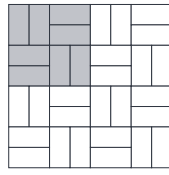
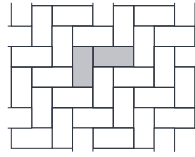
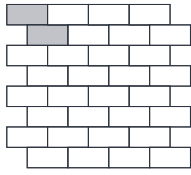


LARGE 44%
SMALL 23%



JUMBO 50%
LARGE 20%

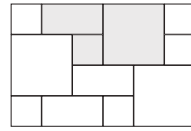
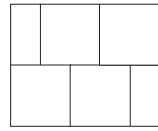
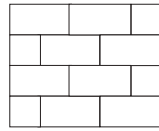
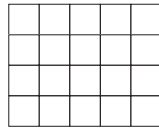
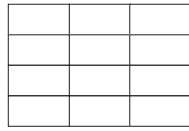
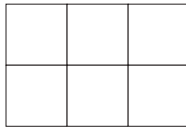
Standard & Double Standard



STANDARD 50%
DOUBLE STANDARD 50%

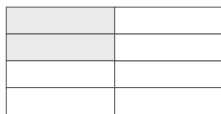
STANDARD 56%
DOUBLE STANDARD 44%

Tresca

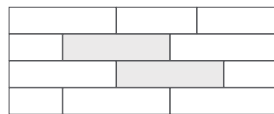


20X20 - 57%
10X20 - 29%
10X10 - 14%

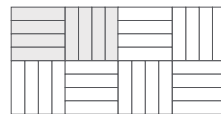
Balsam



TILE JOINT



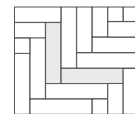
OFF-SET



PARQUET

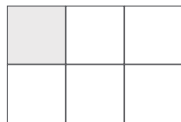


HERRINGBONE

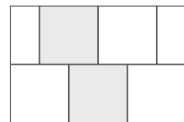


HERRINGBONE

Opus and Spectra

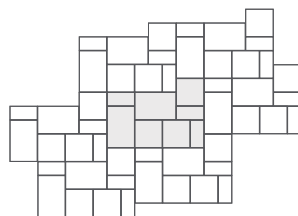
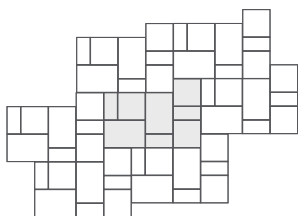


TILE JOINT



1/2 OFF-SET

Ventura



2022 Colour Chart

	Beige Mix	Brightsand	Buff Brown	Buff Mix	Carrara	Charcoal	Colorado Grey	Eclipse	Glacier Creek	Granite	Grey	Grey Mix	Harbour Grey	Muskoka	Nightfall	Pearl	Phantom	Red	Red Mix	Salmon Mix	Silver Birch	Silverlight	Storm	Summer Mist	Ultra Black	White
PAVERS																										
Adelaide 80																										
Ardesia	■																									
Ashford							■																			
Corso																										
Double Standard																										
Manhattan Plank																										
Moderna	■																									
Richmond 80																										
Standard																										
Strada Nova	■																									
Trevista 80 Smooth																										
Trevista 80 Textured																										
SLABS																										
Adelaide 50																										
Avari																										
Balsam																										
Basketweave 24x30																										
Basketweave 24x24																										
Basketweave 12x24																										
BW300																										
Flagstone																										
Huntington																										
Lyra																										
Opus																										
Richmond 50																										
Spectra																										
SR Paver																										
Standard Press 24x30																										
Standard Press 24x24																										
Standard Press 16x16																										
Standard Press 12x24																										
Tresca																										
Trevista 50 Smooth																										
Trevista 50 Textured																										
Ventura																										

	Beige Mix	Carrara	Charcoal	Colorado Grey	Ebony	Fond du lac	Glacier Creek	Granite	Grey	Grey Mix	Harbour Grey	Manitou Blend	Nightfall	Red	Sahara Blend	Sandstone	Silver Birch	Summer Mist	Ultra Black	Weatherwood	Windsor Blend	Winterborn
WALLS																						
Arlington																						
Antico Stacker	■			■						■			■						■			
Barnbeam																					■	
Belvedere												■									■	
Garden Lock	■								■	■									●			■
Hazlelton	■																		■			
Ikon									■	■											■	
Parkwall	■								■	■									■			■
RidgeWall									■	■												
Rockton						■						■										
Soho		■					■			■										■		
COPINGS																						
Barollo									■											■		
Belvedere												■									■	
Bullnose Column Cap					■				■						■							■
Dimensional												■										■
Garden Lock																						
Montana																						
Montana Column Cap					■				■								■					
Parkwall	■								■	■										■		■
Parkwall Column Cap									■	■										■		
Riviera Cap					■				■								■					
Sopra Coping									■											■		
STEPS																						
Camden Step					■																	
Ikon Step									■	■										■		
Ridge Step									■	■												
CURBS																						
Antico	■								■	■												
Driveway			■						■	■					■							
Garden			■						■	■					■							

● Coping Only

Colour swatches and photographs are not exact representations of colour, but are given to provide close reference.
 Measurements and product dimensions are nominal.
 Registered trademarks, logos and product names are the property of Best Way Stone Limited®.
 022022R1

Parkwall®, Parkwall® Antico®, Palladio® Antico®, Garden Lock™ US Patents 6398458 & 6178715; Canadian Patent 2193942.
 RidgeWall® US Patent Pending 20140270989; Canadian Patent Pending 2809704.
 Moderna® US Patents D701619 & D689624; Canadian Industrial Design Registrations 138841 & 138842.

Antico Pavers & Walls
 Ecoscape®



Masonry & Builder



Chimney Caps
Key Stones
Simplicity Steps
Splash Pads
Window Sills

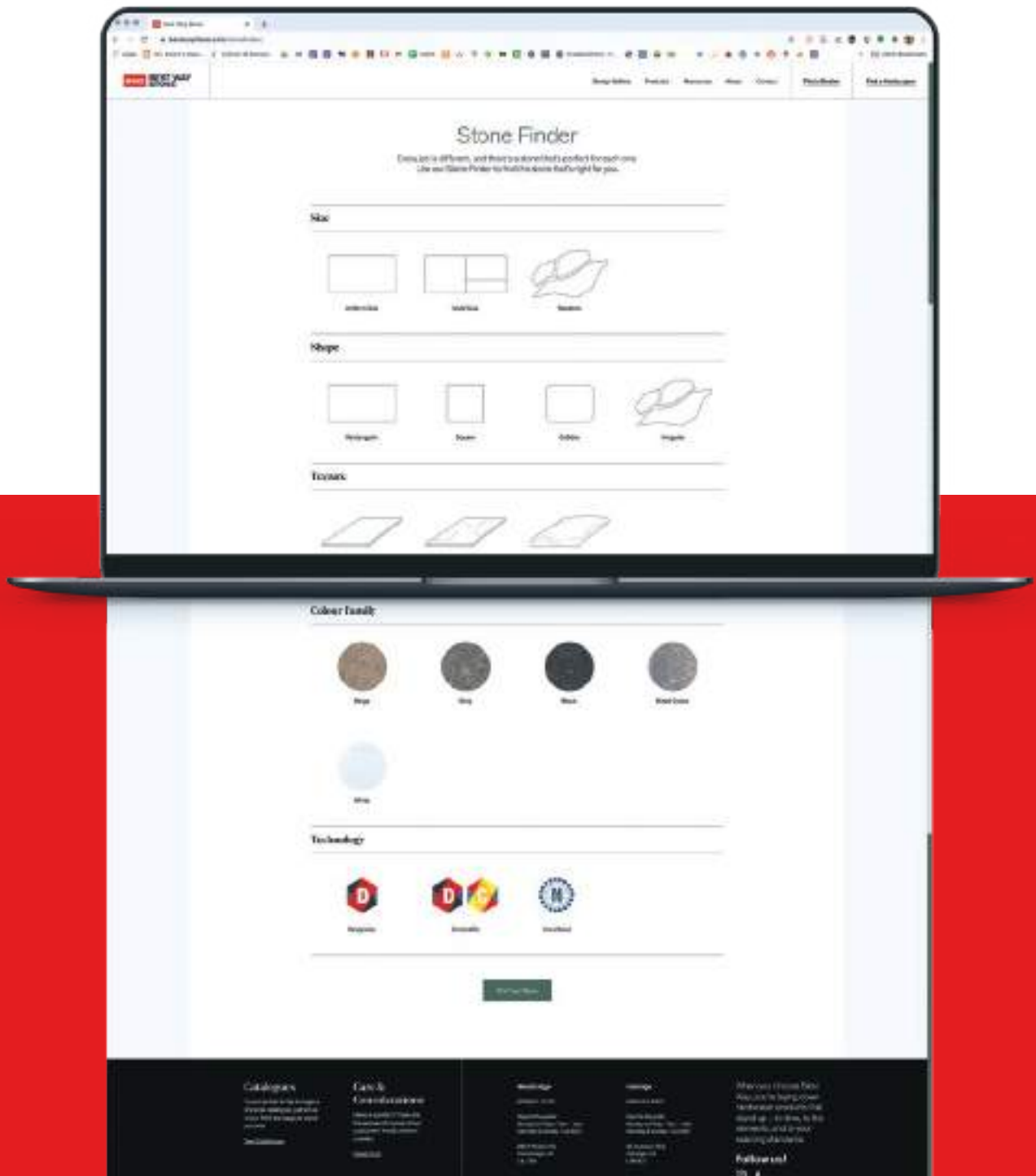
For information on our masonry & builder collection visit:
bestwaystone.com

Stone Finder



Every project is different, and we have the right products to suit your style needs.

Visit bestwaystone.com/stonefinder or look for it right on our homepage and find the stone that's right for you.






1-800-bestway (237-8929)
bestwaystone.com

Woodbridge (Head Office)


8821 Weston Road
Woodbridge, ON L4L 0K9
T 905-851-5122
F 905-851-7603


Uxbridge

65 Anderson Boulevard
Uxbridge, ON L9P 0C7
T 905-640-5845
F 905-640-9773

 facebook/bestwaystone

 @bestwaystone

 pinterest/bestwaystone

 houzz/bestwaystone

 @bestwaystone