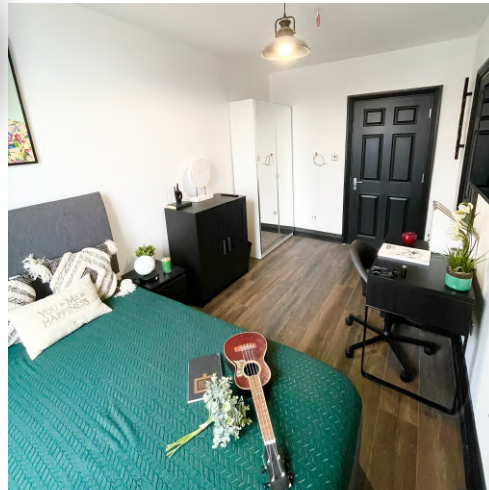




# Student Living NORTHAMPTON

En-suite rooms  
from £175 p/w

LIMITED SPACES LEFT



EVERYTHING YOU NEED IN WALKING DISTANCE



**CALL 01604 760212**

**EMAIL [HELLO@WHITEANDBROWNS.CO.UK](mailto:HELLO@WHITEANDBROWNS.CO.UK)**

**BEETHOVEN HOUSE**

**NN1 2DF**



**WHITE & BROWNS**  
A MODERN MANAGEMENT ESTATE AGENTS

Floor	Room Type	Deposit	Rent Per Week	1st Term	2nd Term	3rd Term	Total Rent (51 week contract)	Monthly Rent
				01/10/26	01/01/27	15/04/27		
First Floor	1. Large En-suite rear facing	£360	£180	£3420	£3240	£2520	£9180	£780
	2. Large En-suite rear facing	£360	£180	£3420	£3240	£2520	£9180	£780
	3. Large En-suite square facing	£360	£180	£3420	£3240	£2520	£9180	£780
	4. Deluxe En-suite square facing	£380	£190	£3610	£3420	£2660	£9690	£823
	5. Large En-suite square facing	£360	£180	£3420	£3240	£2520	£9180	£780
	6. Large En-suite square facing	£360	£180	£3420	£3240	£2520	£9180	£780
Second Floor	7. Small En-suite rear facing	£350	£175	£3325	£3150	£2450	£8925	£758
	8. Small En-suite rear facing	£350	£175	£3325	£3150	£2450	£8925	£758
	9. Large En-suite square facing	£370	£185	£3515	£3330	£2590	£9435	£802
	10. Deluxe En-suite square facing	£380	£190	£3610	£3420	£2660	£9690	£823
	11. Small En-suite square facing	£360	£180	£3420	£3240	£2520	£9180	£780
	12. Large En-suite square facing	£370	£185	£3515	£3330	£2590	£9435	£802
	13. Deluxe En-suite rear facing	£380	£190	£3610	£3420	£2660	£9690	£823
Loft Floor	14. Deluxe En-suite rear facing	£380	£190	£3610	£3420	£2660	£9690	£823
	15. Deluxe En-suite rear facing	£380	£190	£3610	£3420	£2660	£9690	£823

EN-SUITE ROOMS

CENTRAL LOCATION

ALL BILLS INCLUDED

FIBRE OPTIC WIFI

LAUNDRY FACILITIES

BIKE STORAGE

URBAN GARDEN

MAINTENANCE TEAM

WALKING DISTANCE TO:

WATERSIDE CAMPUS

TRAIN STATION

TOWN CENTRE SHOPPING

BARs & RESTAURANTS

CINEMA



# Student Living NORTHAMPTON

En-suite rooms  
from £170 p/w

LIMITED SPACES LEFT



EVERYTHING YOU NEED IN WALKING DISTANCE



**CALL 01604 760212**

**EMAIL [HELLO@WHITEANDBROWNS.CO.UK](mailto:HELLO@WHITEANDBROWNS.CO.UK)**

**3 ST PETERS GARDENS**

**NN1 1SX**



**WHITE & BROWNS**  
A MODERN MANAGEMENT ESTATE AGENTS

Room Type	Deposit	Rent Per Week	Rent Per Month	Total Rent 11 month Contract	Total Rent 12 month Contract
1. Small En-suite Rear Facing	£340	£170	£737	£8103	£8840
2. Large En-suite Rear Facing	£360	£180	£780	£8580	£9360
3. Small En-suite Rear Facing	£360	£180	£780	£8580	£9360
4. Large En-suite Front Facing	£360	£180	£780	£8580	£9360
5. Large En-suite Front Facing	£360	£180	£780	£8580	£9360
6. Small En-suite Rear Facing	£340	£170	£737	£8103	£8840
7. Large En-suite Rear Facing	£360	£180	£780	£8580	£9360
8. Large En-suite Rear Facing	£360	£180	£780	£8580	£9360
9. Large En-suite Front Facing	£380	£190	£823	£9057	£9880
10. Large En-suite Front Facing	£360	£180	£780	£8580	£9360
11. Studio Front Facing	£400	£200	£867	£9533	£10400

Contract start date is 13.09.2026. Contract length is 11 month or 12 month 06.09.2027. All Rooms are provided fully furnished with a double bed, wardrobe, study desk, chair and an en-suite facilities. Free Wi-fi and all bills are inclusive. In house Launderette with 2 washer dryers free to use for all residents. Accommodation is only a short walk from the Waterside Campus. Monthly communal space cleaning provided. In house maintenance team & tenant's App access Premium room package upgrade includes a smart TV, mini fridge, microwave and a kettle at an extra cost of £20 per month. Monthly communal space cleaning provided

EN-SUITE ROOMS

CENTRAL LOCATION

ALL BILLS INCLUDED

FIBRE OPTIC WIFI

LAUNDRY FACILITIES

BIKE STORAGE

URBAN GARDEN

MAINTENANCE TEAM

WALKING DISTANCE TO:

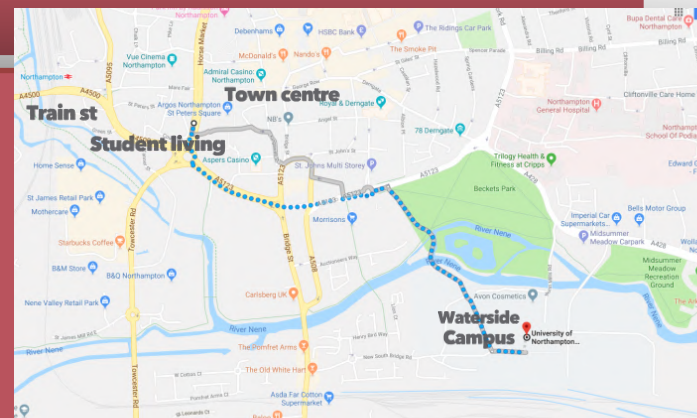
WATERSIDE CAMPUS

TRAIN STATION

TOWN CENTRE SHOPPING

BARs & RESTAURANTS

CINEMA



# Student Living NORTHAMPTON

En-suite rooms  
from £170 p/w



LIMITED SPACES LEFT



EVERYTHING YOU NEED IN WALKING DISTANCE



**CALL 01604 760212**

**EMAIL [HELLO@WHITEANDBROWNS.CO.UK](mailto:HELLO@WHITEANDBROWNS.CO.UK)**

**6 CHEYNE WALK**

**NN1 5PT**



**WHITE & BROWNS**  
A MODERN MANAGEMENT ESTATE AGENTS

Floor	Room Type	Deposit	Rent Per Person Per Week	Rent Per Person Per Month	Total Rent 11 Month Contract	Total Rent 12 Month Contract
Ground Floor	1. Deluxe En-suite Rear Facing <b>Reserved</b>	£380	£190	£823	£9057	£9880
	2. Large En-suite Front Facing	£360	£180	£780	£8580	£9360
First Floor	3. Large En-suite Rear Facing	£360	£180	£780	£8580	£9360
	4. Large En-suite Front Facing	£360	£180	£780	£8580	£9360
	5. Large En-suite Front Facing	£360	£180	£780	£8580	£9360
	6. Small En-suite Front Facing	£340	£170	£737	£8103	£8840
	7. Deluxe En-suite Front Facing	£380	£190	£823	£9057	£9880
	8. Premium Deluxe En-suite Rear Facing	£400	£200	£867	£9533	£10400
Loft floor	9. Small En-suite Front Facing <b>Reserved</b>	£340	£170	£737	£8103	£8840

Contract start date is 13.09.2026. Contract length is 11 month or 12 month 06.09.2027. All Rooms are provided fully furnished with a double bed, wardrobe, study desk, chair and an en-suite facilities. Free Wi-fi and all bills are inclusive. In house Launderette with 2 washer dryers free to use for all residents. Accommodation is only a short walk from the Waterside Campus. Monthly communal space cleaning provided. In house maintenance team & tenant's App access Premium room package upgrade includes a smart TV, mini fridge, microwave and a kettle at an extra cost of £20 per month. Monthly communal space cleaning provided.

EN-SUITE ROOMS

CENTRAL LOCATION

ALL BILLS INCLUDED

FIBRE OPTIC WIFI

LAUNDRY FACILITIES

BIKE STORAGE

URBAN GARDEN

MAINTENANCE TEAM

WALKING DISTANCE TO:

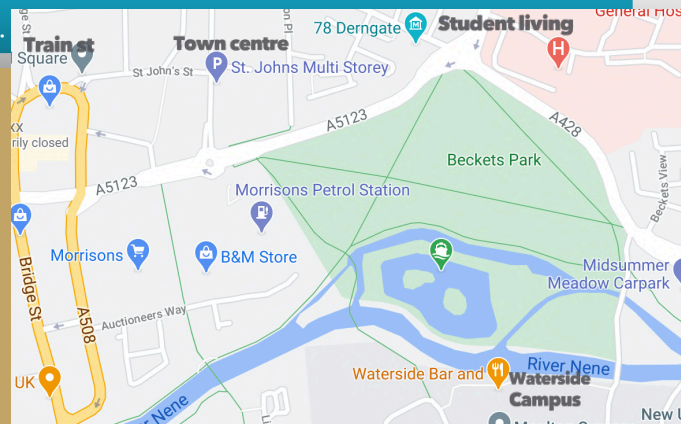
WATERSIDE CAMPUS

TRAIN STATION

TOWN CENTRE SHOPPING

BAR & RESTAURANTS

CINEMA



# Student Living NORTHAMPTON

En-suite rooms  
from £170 p/w

LIMITED SPACES LEFT



EVERYTHING YOU NEED IN WALKING DISTANCE



**CALL 01604 760212**

**EMAIL [HELLO@WHITEANDBROWNS.CO.UK](mailto:HELLO@WHITEANDBROWNS.CO.UK)**

**11 CHEYNE WALK**

**NN15PT**



**WHITE & BROWNS**  
A MODERN MANAGEMENT ESTATE AGENTS



Floor	Room Type	Deposit	Rent Per Week	Rent Per Month	Total Rent 11 Month Contract	Total Rent 12 Month Contract
Ground Floor	1. Large En-suite park facing	£360	£180	£780	£8580	£9360
	2. Large En-suite rear facing	£360	£180	£780	£8580	£9360
First Floor	3. Deluxe En-suite rear facing	£400	£200	£867	£9533	£10400
	4. Large En-suite park facing	£370	£185	£802	£8818	£9620
	5. Large En-suite park facing	£360	£180	£780	£8580	£9360
	6. Small En-suite park facing	£340	£170	£737	£8103	£8840
	7. Large En-suite park facing	£360	£180	£780	£8580	£9360
	8. Large En-suite rear facing	£370	£185	£802	£8818	£9620
Second Floor	9. Large En-suite rear facing	£380	£190	£823	£9057	£9880
	10. Large En-suite park facing	£360	£180	£780	£8580	£9360
	11. Large En-suite park facing	£360	£180	£780	£8580	£9360
	12. Large En-suite park facing	£360	£180	£780	£8580	£9360
	13. Large En-suite park facing	£360	£180	£780	£8580	£9360
	14. Large En-suite rear facing	£360	£180	£780	£8580	£9360

Contract start date is 13.09.2026. Contract length is 11 month or 12 month 06.09.2027. All Rooms are provided fully furnished with a double bed, wardrobe, study desk, chair and an en-suite facilities. Free Wi-fi and all bills are inclusive. In house Launderette with 3 washer dryers free to use for all residents. Accommodation is only a short walk from the Waterside Campus. Monthly communal space cleaning provided. In house maintenance team & tenant's App access

Premium room package upgrade includes a smart TV, mini fridge, microwave and a kettle at an extra cost of £20 per month. Monthly communal space cleaning provided



EN-SUITE ROOMS

CENTRAL LOCATION

ALL BILLS INCLUDED

FIBRE OPTIC WIFI

LAUNDRY FACILITIES

BIKE STORAGE

URBAN GARDEN

MAINTENANCE TEAM

WALKING DISTANCE TO:

WATERSIDE CAMPUS

TRAIN STATION

TOWN CENTRE SHOPPING

BARs & RESTAURANTS

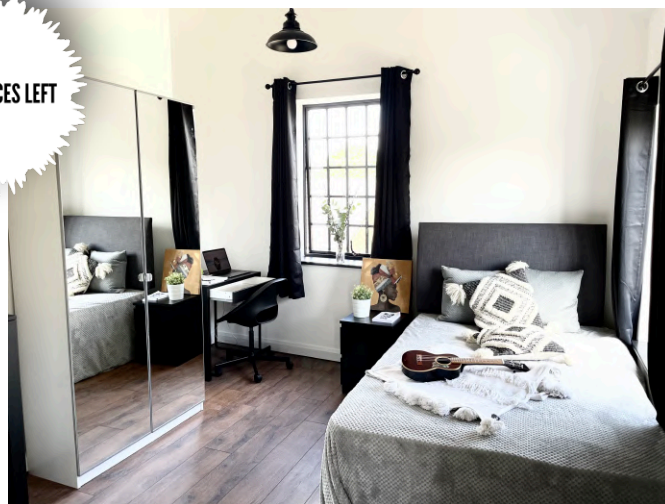
CINEMA



# Student Living NORTHAMPTON

En-suite rooms  
from £175 p/w

LIMITED SPACES LEFT



EVERYTHING YOU NEED IN WALKING DISTANCE



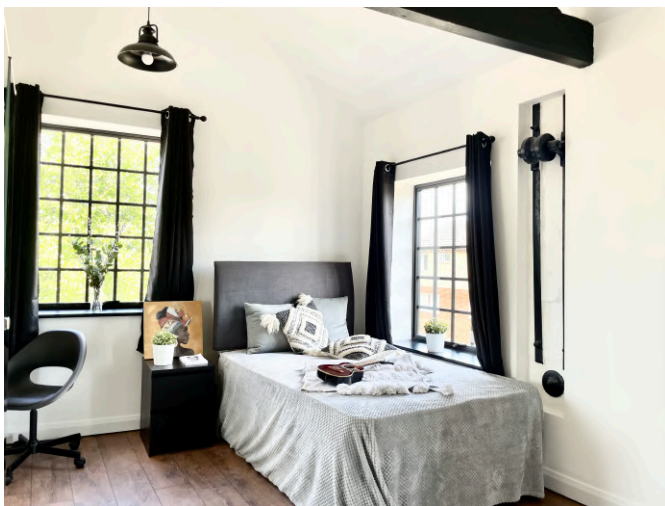
CALL 01604 760212

EMAIL [HELLO@WHITEANDBROWNS.CO.UK](mailto:HELLO@WHITEANDBROWNS.CO.UK)

22 STOCKLEY STREET  
**NN1 5EY**



WHITE & BROWNS  
A MODERN MANAGEMENT ESTATE AGENTS



Floor	Room Type	Deposit	Rent Per Week	1st Term	2nd Term	3rd Term	Total Rent (Assuming 51 week contract)	Monthly Rent
				01/10/26	01/01/27	15/04/27		
Ground Floor	1. LARGE EN-SUITE FRONT	£360	£180	£3420	£3240	£2520	£9180	£780
	2. LARGE EN-SUITE REAR	£340	£170	£3230	£3060	£2380	£8670	£737
	3. LARGE EN-SUITE FRONT	Reserved	£180	£3420	£3240	£2520	£9180	£780
	4. LARGE EN-SUITE FRONT	£360	£180	£3420	£3240	£2520	£9180	£780
First Floor	5. LARGE EN-SUITE REAR	£360	£180	£3420	£3240	£2520	£9180	£780
	6. LARGE EN-SUITE FRONT	£360	£180	£3420	£3240	£2520	£9180	£780
	7. LARGE EN-SUITE FRONT	£360	£180	£3420	£3240	£2520	£9180	£780
	8. LARGE EN-SUITE FRONT	£360	£180	£3420	£3240	£2520	£9180	£780
	9. LARGE EN-SUITE FRONT	£360	£180	£3420	£3240	£2520	£9180	£780
	10. DELUXE EN-SUITE FRONT	£380	£190	£3610	£3420	£2660	£9690	£823
	11. DELUXE ENSUITE FRONT	£380	£190	£3610	£3420	£2660	£9690	£823
	12. LARGE EN-SUITE REAR	£360	£180	£3420	£3240	£2520	£9180	£780
Second Floor	13. LARGE EN-SUITE FRONT	Reserved	£180	£3420	£3240	£2520	£9180	£780
	14. LARGE EN-SUITE FRONT	£360	£180	£3420	£3240	£2520	£9180	£780
	15. LARGE EN-SUITE FRONT	£360	£180	£3420	£3240	£2520	£9180	£780
	16. LARGE EN-SUITE FRONT	£360	£180	£3420	£3240	£2520	£9180	£780
	17. DELUXE EN-SUITE FRONT	£380	£190	£3610	£3420	£2660	£9690	£823
	18. DELUXE EN-SUITE FRONT	£380	£190	£3610	£3420	£2660	£9690	£823

UNIPOL ACCREDITED ACCOMMODATION Contract start date is 13.09.2026 Contract end date 06.09.2027. 5% discount shall be applied for rents paid for 51 weeks in full and in advance All Rooms are provided fully furnished with a double bed, wardrobe, study desk, chair and en-suite facilities. Accommodation has 2 shared kitchen/diner/living rooms with 4 fully equipped kitchen facilities, In house Laundrette with 4 washer dryers free to use for all residents. Walking distance to town centre amenities and Waterside Campus. Premium room package upgrade includes a smart TV, mini fridge, microwave and a kettle at extra cost of £10 per week.

EN-SUITE ROOMS

CENTRAL LOCATION

ALL BILLS INCLUDED

FIBRE OPTIC WIFI

LAUNDRY FACILITIES

BIKE STORAGE

URBAN GARDEN

MAINTENANCE TEAM

WALKING DISTANCE TO:

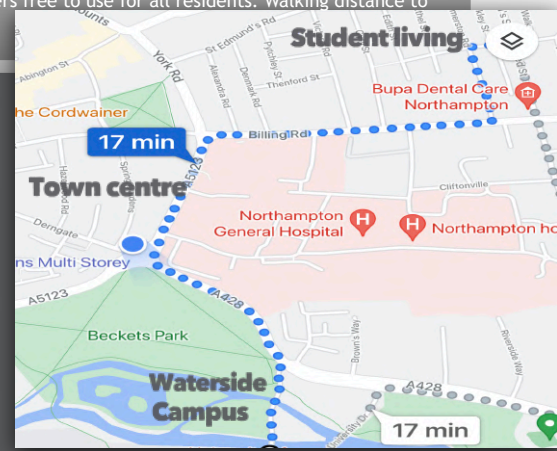
WATERSIDE CAMPUS

TRAIN STATION

TOWN CENTRE SHOPPING

BARS & RESTAURANTS

CINEMA



# Student Living NORTHAMPTON

En-suite rooms  
from £175 p/w



LIMITED SPACES LEFT

EVERYTHING YOU NEED IN WALKING DISTANCE



**CALL 01604 760212**

**EMAIL [HELLO@WHITEANDBROWNS.CO.UK](mailto:HELLO@WHITEANDBROWNS.CO.UK)**

**INTOTO<sup>HOUSE</sup> 5-11**  
**HORSESHOE STREET**

**NN11TB**



**WHITE & BROWNS**  
A MODERN MANAGEMENT ESTATE AGENTS

Room Type	Deposit	Rent Per Week	Rent Per Month	Total Rent 11 month Contract	Total Rent 12 month Contract
1. Deluxe En-suite	£380	£190	£823	£9057	£9880
2. Small En-suite	£350	£175	£758	£8342	£9100
3. Large En-suite	£360	£180	£780	£8580	£9360
4. Deluxe En-suite	£380	£190	£823	£9057	£9880
5. Deluxe En-suite	£380	£190	£823	£9057	£9880
6. Large En-suite	£360	£180	£780	£8580	£9360
7. Large En-suite	£360	£180	£780	£8580	£9360

Contract start date is 13.09.2026. Contract length is 11 month or 12 month 06.09.2027. All Rooms are provided fully furnished with a double bed, wardrobe, study desk, chair and an en-suite facilities. Free Wi-fi and all bills are inclusive. In house Launderette with 2 washer dryers free to use for all residents. Accommodation is only a short walk from the Waterside Campus. Monthly communal space cleaning provided. In house maintenance team & tenant's App access Premium room package upgrade includes a smart TV, mini fridge, microwave and a kettle at an extra cost of £20 per month. Monthly communal space cleaning provided.

EN-SUITE ROOMS

CENTRAL LOCATION

ALL BILLS INCLUDED

FIBRE OPTIC WIFI

LAUNDRY FACILITIES

BIKE STORAGE

URBAN GARDEN

MAINTENANCE TEAM

WALKING DISTANCE TO:

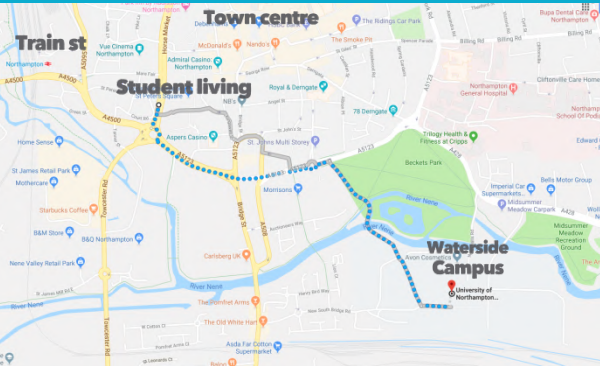
WATERSIDE CAMPUS

TRAIN STATION

TOWN CENTRE SHOPPING

BARs & RESTAURANTS

CINEMA



# Student Living NORTHAMPTON

En-suite rooms  
from £175 p/w



LIMITED SPACES LEFT

EVERYTHING YOU NEED IN WALKING DISTANCE



**CALL 01604 760212**

**EMAIL [HELLO@WHITEANDBROWNS.CO.UK](mailto:HELLO@WHITEANDBROWNS.CO.UK)**

**9 REGENT SQUARE**

**NN1 2NQ**



**WHITE & BROWNS**  
A MODERN MANAGEMENT ESTATE AGENTS

Floor	Room Type	Deposit	Rent Per Week	Rent Per Month	Total Rent 11 Week Contract	Total Rent 12 Week Contract
GF	1. Large En-suite Front Facing	£350	£175	£758	£8342	£9100
GF	2. Large En-suite Rear Facing	£360	£180	£780	£8580	£9360
1ST	3. Deluxe Studio Front Facing	£400	£200	£867	£9533	£10400
1ST	4. Large En-suite Rear Facing	£360	£180	£780	£8580	£9360
2ND	5. Deluxe Studio Front Facing	£400	£200	£867	£9533	£10400
2ND	6. Small Studio Rear Facing	£380	£190	£823	£9057	£9880
Reserved	7. Deluxe Studio Front Facing	£400	£200	£867	£9533	£10400
Reserved	8. Deluxe Studio Rear Facing	£400	£200	£867	£9533	£10400

Contract start date is 13.09.2026. Contract length is 11 month or 12 month 06.09.2027. All Rooms are provided fully furnished with a double bed, wardrobe, study desk, chair and an en-suite facilities. Free Wi-fi and all bills are inclusive. In house Launderette with 2 washer dryers free to use for all residents. Accommodation is only a short walk from the Waterside Campus. Monthly communal space cleaning provided. In house maintenance team & tenant's App access Premium room package upgrade includes a smart TV, mini fridge, microwave and a kettle at an extra cost of £20 per month. Monthly communal space cleaning provided. Studios come equipped with full kitchen facilities

EN-SUITE ROOMS

CENTRAL LOCATION

ALL BILLS INCLUDED

FIBRE OPTIC WIFI

LAUNDRY FACILITIES

BIKE STORAGE

URBAN GARDEN

MAINTENANCE TEAM

WALKING DISTANCE TO:

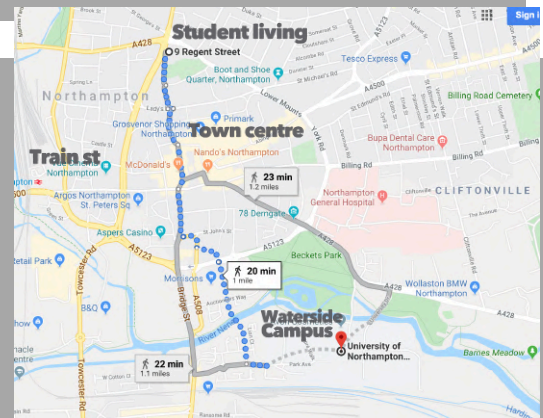
WATERSIDE CAMPUS

TRAIN STATION

TOWN CENTRE SHOPPING

BARs & RESTAURANTS

CINEMA



# Student Living NORTHAMPTON

Studios  
from £190 p/w

LIMITED SPACES LEFT



EVERYTHING YOU NEED IN WALKING DISTANCE



**CALL 01604 760212**

**EMAIL [HELLO@WHITEANDBROWNS.CO.UK](mailto:HELLO@WHITEANDBROWNS.CO.UK)**

**71-73 KINGSTHORPE ROAD  
QUEENS PARK  
NN2 6HE**



**WHITE & BROWNS**  
A MODERN MANAGEMENT ESTATE AGENTS

Floor	Type	Deposit	Rent Per Person Per Week	Rent Per Month	Total Rent 11 Week Contract	Total Rent 12 Week Contract	Total Rent (51 week contract)
Ground Floor	1. Large Studio	£570	£190	£823	£9057	£9880	£9690
	2. Deluxe Studio	£660	£220	£953	£10487	£11440	£11220
First Floor	3. Deluxe Studio	£660	£220	£953	£10487	£11440	£11220
	4. Large Studio	£600	£200	£867	£9533	£10400	£10200
	5. Deluxe Studio	£660	£220	£953	£10487	£11440	£11220
Second Floor	6. Deluxe Studio	£630	£210	£910	£10010	£10920	£10710
	7. Large Studio	£600	£200	£867	£9533	£10400	£10200
	8. Deluxe Studio	£660	£220	£953	£10487	£11440	£11220

Contract start date is 13.09.2026. Contract length is 11 month or 12 month 06.09.2027. All Rooms are provided fully furnished with a double bed, wardrobe, study desk, chair and an en-suite facilities. Free Wi-fi and all bills are inclusive. In house Launderette with 2 washer dryers free to use for all residents. Accommodation is only a short walk from the Waterside Campus. Monthly communal space cleaning provided. access Premium room package upgrade includes a smart TV, mini fridge, microwave and a kettle at an extra cost of £20 per month. Monthly communal space cleaning provided. Studios come equipped with full kitchen.

EN-SUITE ROOMS

CENTRAL LOCATION

ALL BILLS INCLUDED

FIBRE OPTIC WIFI

LAUNDRY FACILITIES

BIKE STORAGE

URBAN GARDEN

MAINTENANCE TEAM

WALKING DISTANCE TO:

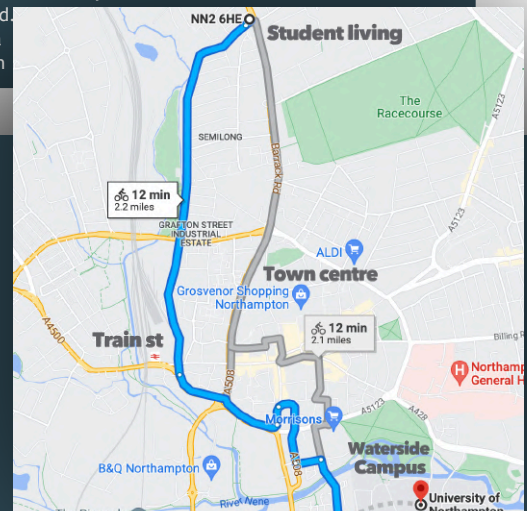
WATERSIDE CAMPUS

TRAIN STATION

TOWN CENTRE SHOPPING

BARs & RESTAURANTS

CINEMA



# **Student Living NORTHAMPTON**

**En-suite rooms  
from £160 p/w**



**LIMITED SPACES LEFT**

**EVERYTHING YOU NEED IN WALKING DISTANCE**



**CALL 01604 760212**

**EMAIL [HELLO@WHITEANDBROWNS.CO.UK](mailto:HELLO@WHITEANDBROWNS.CO.UK)**

**1 RICHMOND TERRACE**

**NN5 5DP**



**WHITE & BROWNS**  
A MODERN MANAGEMENT ESTATE AGENTS

Room Type	Deposit	Rent Per Week	Rent Per Month	Total Rent 11 month Contract	Total Rent 12 month Contract
1. Large En-suite	£330	£165	£715	£7865	£8580
2. Small En-suite	£320	£160	£693	£7627	£8320
3. Large En-suite	£340	£170	£737	£8103	£8840

Contract start date is 13.09.2026. Contract length is 11 month or 12 month 06.09.2027. All Rooms are provided fully furnished with a double bed, wardrobe, study desk, chair and an en-suite facilities. Free Wi-fi and all bills are inclusive. In house Launderette with a washer dryer free to use for all residents. Accommodation is only a short walk from the Waterside Campus. Monthly communal space cleaning provided. In house maintenance team & tenant's App access Premium room package upgrade includes a smart TV, mini fridge, microwave and a kettle at an extra cost of £20 per month. Monthly communal space cleaning provided. Studios come equipped with full kitchen facilities

EN-SUITE ROOMS

CENTRAL LOCATION

ALL BILLS INCLUDED

FIBRE OPTIC WIFI

LAUNDRY FACILITIES

BIKE STORAGE

URBAN GARDEN

MAINTENANCE TEAM

WALKING DISTANCE TO:

WATERSIDE CAMPUS

TRAIN STATION

TOWN CENTRE SHOPPING

BARS & RESTAURANTS

CINEMA

