

Introduction

Welcome to Nevada's

Early Intervention Services System

In Nevada, early intervention is a system of services and supports individually designed to help your family meet the specific needs of your child.

Children ages birth through two years will be determined eligible for early intervention services if they meet any of the criteria below through medical diagnosis, test scores from standard evaluation tools or by informed clinical opinion.

Developmental Delay

A. A child exhibits a minimum of fifty percent (50%) delay of child's chronological age in any one of the areas listed below or a minimum of 25% delay of the child's chronological age in any of the two areas listed below.

The delay(s) must be identified in one or more of the following areas:

1. cognitive development (learning/ understanding);
2. physical development, (including motor, vision and hearing);
3. communication development (speech/ language);
4. social or emotional development; or
5. adaptive development (self-help).

B. Children will also be eligible who have a diagnosed physical or mental condition that has a high probability of resulting in developmental delays.

In Nevada, early intervention services are provided at no cost to families. With your permission, private health insurance may be used to assist with service costs. The early intervention program is responsible for any co-pay or deductible for those services.

You must consent to the initial screening and evaluation, receive a copy of your Parents' Rights, which are included in this handbook, and have those rights explained to you in a way you can understand. Once your child is eligible for services and supports, your service coordinator and possibly other team members will meet with you to share information.

With your agreement the other team members will ask about your family's routines and what people and places are important to you and your child. During this time, you and your service coordinator will determine what your concerns and priorities are for your child and family and what outcomes (or changes) you would like to work on.

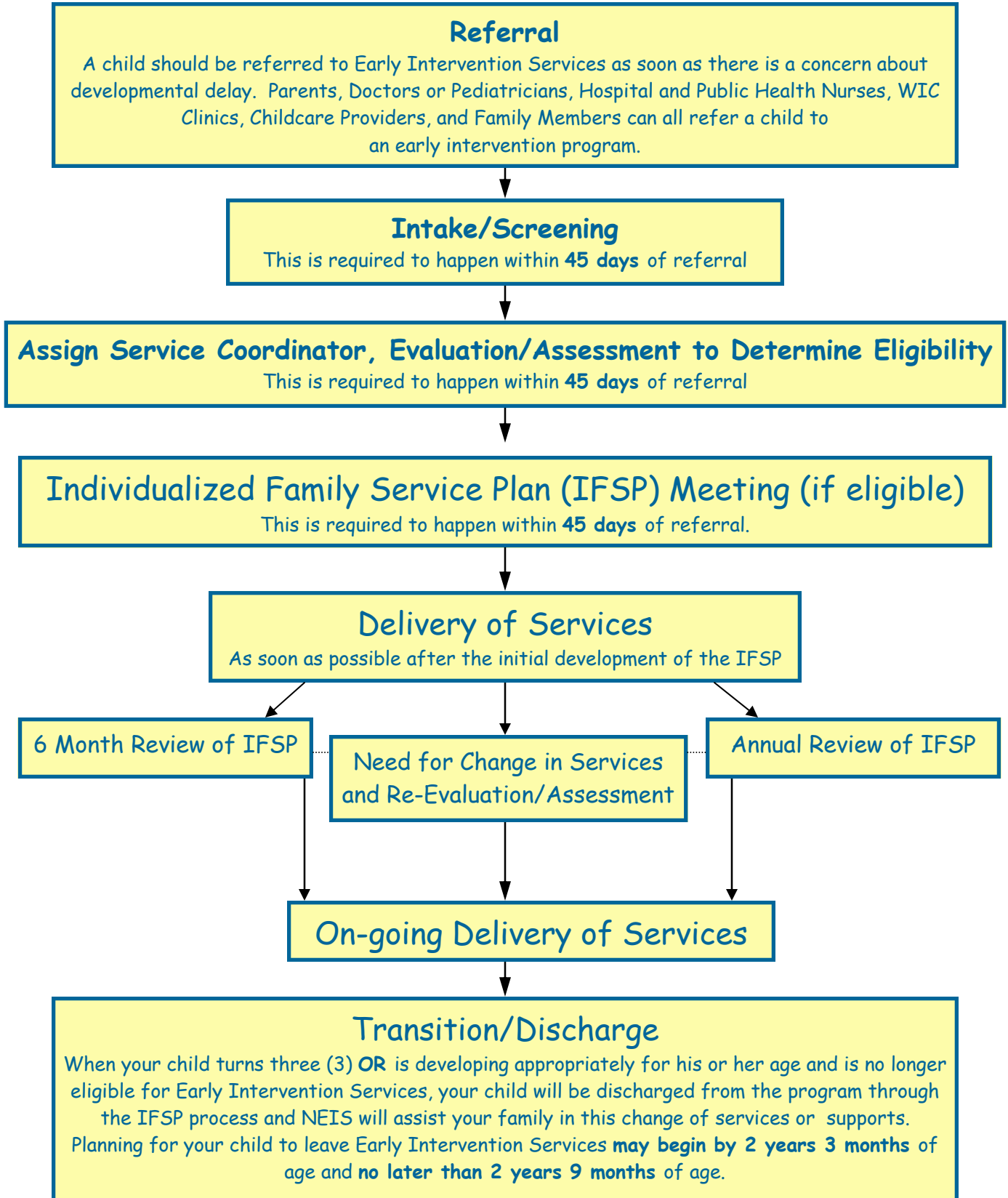
Next, your service coordinator will schedule your Individualized Family Service Plan (**IFSP**) meeting. By Federal Law, this meeting must be held within 45 days from the date of referral for services and may not be held without a parent or legal guardian and service coordinator being present. The IFSP describes your child's present levels of development, the outcomes for your child and family, and the services and supports necessary to meet them. This is your family's unique plan for services.

Project ASSIST

**Toll Free 1-800-522-0066 or
Email: ProjectAssist@dhhs.nv.gov**

Steps in Early Intervention Services

This is an overview of the steps your child and family will take in an early intervention program. There are certain timelines when these steps should happen.



Service Coordination

When your child and family are referred for early intervention services, you will be assigned a service coordinator who will be your family's primary point of contact for obtaining information and services. Your service coordinator will meet with your family to explain early intervention services and will also:

- ♥ Help you understand information you receive.
- ♥ Inform you of your rights in the early intervention services program and explain them to you.
- ♥ Help you get the evaluations and assessments that your child needs.
- ♥ Work as a part of the team, along with you, to help determine what services and supports your family needs.
- ♥ Coordinate and assist in the development and regular review of your child and family's IFSP.
- ♥ Assist your family in finding other community resources. For example, determining if there is a public agency that could provide financial assistance, if needed, and assisting your family to complete the application and claim forms.
- ♥ Make sure that you receive the services and supports that are on your IFSP in a timely manner.
- ♥ Help you access support services, such as training opportunities, parent groups, and advocacy services.

- ♥ Help you resolve concerns if they arise.
- ♥ Assist in the development and implementation of a Transition Plan for services for your child when early intervention ends.



- ♥ Refer you to other services such as child care, health, or family support services, and help you become your child's best advocate.
- ♥ Coordinate the provision of early intervention and other services that your child needs or is already receiving through other agencies.

Refer to Individuals with Disabilities Education Improvement Act of 2004 (IDEA), Public Law 108-446 (P.L. 108-446) and 34 CFR parts 300 and 303 (303.34)

Your Family's Participation in Early Intervention

Early intervention is a voluntary program. The early intervention staff will assist you in designing and carrying out the strategies that will meet your child's and family's unique needs.

In order for your family to receive maximum benefit from early intervention services, it is critical for you to fully participate in all aspects of the services and supports. You are a key decision-maker related to the needs of your child and family, and in choosing the services and supports that will help to make a difference in your lives. To optimize your child's development we need you to be actively involved in the implementation of the activities designed with your family.

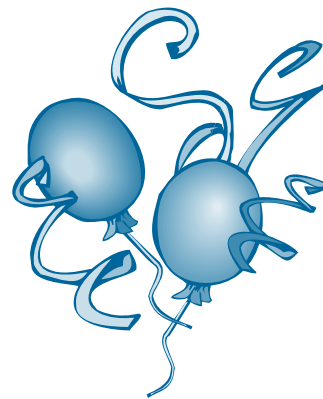
The more involved your family becomes with early intervention, the better the outcomes for your child. Early intervention is a system of supports and services designed to assist families in helping their child. All intervention should be designed to enhance your family's lives within your daily routines. The success of these interventions is dependent upon family participation.

If for any reason, you do not choose to participate in all or some early intervention services, please notify your service coordinator that you wish to discontinue services. If you are unable to participate for a period of time due to life circumstances, please notify your service coordinator. If your family is planning on moving, your service coordinator can assist you in locating another program in your new community, even if in another state. If you discontinue your participation in the program through missed

appointments or lack of communication over an extended period of time, the program may discharge your child from services as a voluntary withdrawal by family.

Early Intervention Services Programs operate year round. Due to illness or vacations, service coordinators and therapists may cancel or reschedule appointments with their families. These will be made up to meet the frequency of services for your child.

Early intervention services are designed to support families whose child is experiencing developmental delays for any reason. If during the course of intervention your child reaches age appropriate developmental milestones, this is a cause for celebration!



If you and your service coordinator agree your child is developmentally at age level, your child will be exited from early intervention services through the IFSP process. Your service coordinator will help develop a transition plan to ensure that you are informed of other community resources as appropriate.