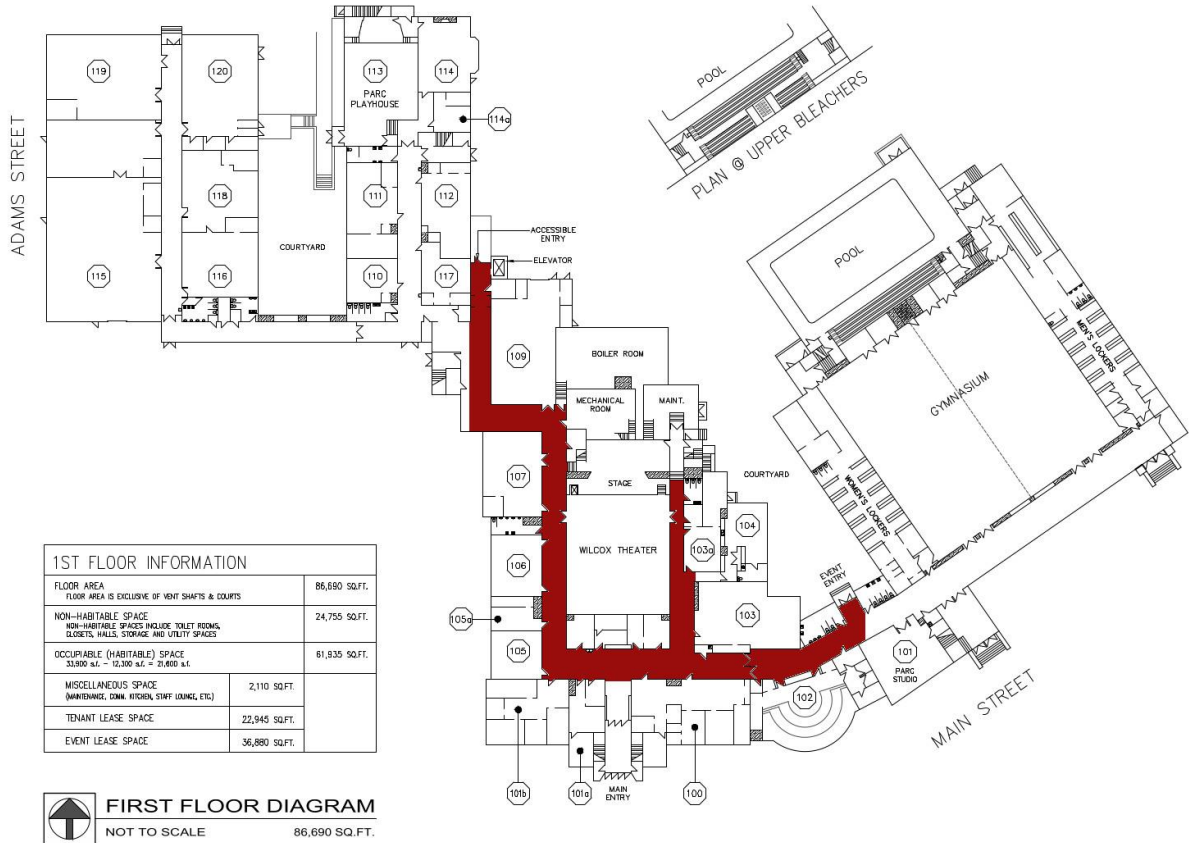


PARC Building Map with entry options to Wilcox Theater located in PARC's building.



1ST FLOOR INFORMATION	
FLOOR AREA FLOOR AREA IS EXCLUSIVE OF VENT SHAFTS & COURTS	86,690 SQ.FT.
NON-HABITABLE SPACE NON-HABITABLE SPACES INCLUDE TOILET ROOMS, CLOSETS, HALLS, STORAGE, AND UTILITY SPACES	24,755 SQ.FT.
OCCUPIABLE (HABITABLE) SPACE 33,599 sq. ft. - 12,300 sq. ft. = 21,299 sq. ft.	61,935 SQ.FT.
MISCELLANEOUS SPACE (SWIMMING, DINING, KITCHEN, STAFF LOUNGE, ETC.)	2,110 SQ.FT.
TENANT LEASE SPACE	22,945 SQ.FT.
EVENT LEASE SPACE	36,880 SQ.FT.

FIRST FLOOR DIAGRAM
NOT TO SCALE 86,690 SQ.FT.