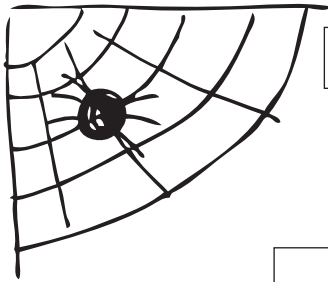


FALL NATURE HUNT



SPIDER



WILD STRAWBERRY



RED LEAF



PINECONE



ORANGE LEAF



YELLOW LEAF



FEATHER



BEE



BUCKEYE



LADYBUG



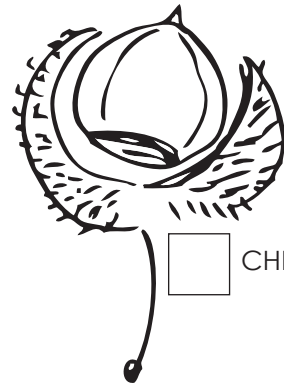
PURPLE FLOWER



WHITE FLOWER



HEART-SHAPED ROCK



CHESTNUT



ANT



MUSHROOM



SNAIL

PARENT NOTE Practice by repeating these phrases:
"What is this?" / "This is a ____." / "These are ____." / "It is a ____." / "They are ____."

