

10 THINGS

THAT MAKE OUR DIAMONDS VVR™

VERY VERY RARE

By Celebrity Diamonds



#1

THEY ARE FLAWLESS

THE HIGHEST GRADES OF CLARITY IN THE WORLD

FL + IF



Approx .01% of all diamonds on the earth are FLAWLESS. That means only (1) out of 10,000 diamonds qualifies to a clarity grade of FLAWLESS. Celebrity Diamonds specializes in selling FLAWLESS, VVR™ Diamonds. (FL + IF) Each diamond is measured on it's clarity and you can see the clarity grade on it's Diamond Grade Report. Clarity measures how free a diamond is from internal flaws and external flaws. If it is perfectly clear it is FLAWLESS. Selling FLAWLESS diamonds is the flagship of Celebrity Diamonds. The clarity scales range from FLAWLESS to INCLUDED. 99.9 % of all diamonds sold are flawed, somehow, someway, somewhere. Can the human eye see them? Not always. But it doesn't mean the flaws are not there. Are they still beautiful? To the human eye, yes! But inside, no. They are flawed. Our competitors tell their clients that if the eye can't see it, it doesn't matter. But it does matter. In a generation that claims we are all the same... we are not. Quality matters. True flawless beauty is something real and it can be bought. And for that reason, we opened Celebrity Diamonds with one goal in mind - Sell Flawless VVR™ Diamonds.

33 QUALIFICATIONS TO MAKE IT TO FLAWLESS (FL)

No blemishes	No inclusions	No metal traces near the culet
No flaws	No external growth lines	No wisps
No internal pinpoints	No polishing lines	No bright colors
No needles	No surface striations	No color bands
No flux residue	No surface blemishes	No uneven extinction pattern
No metallic flux trace	No surface lines	No strain lines
No clouds	No small naturals	No naturals on the girdle
No internal graining	No microscopic pits	No polishing marks
No metallic dots	No minor abrasions on junctions	No over-polishing facet junctions
No gas bubbles	No extra facets	No fast growth crystals
No internal strain	No tiny spots	No stones grown by CVD

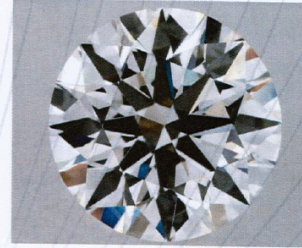
FUN FACT

If just one of these imperfections is found, just one, the diamond is immediately downgraded to Internally Flawless (IF).

Celebrity Diamonds

Appraisal No: 000026036002

Purpose of Appraisal: **Retail Replacement Value**
Function of Appraisal: **Insurance**



One lab grown round brilliant cut diamond, measuring 8.40 - 8.36 x 5.19mm exact weight 2.26ct. GIA Gem Trade Laboratory Report # 6532301902
Laser inscribed "GIA 6532301902, LABORATORY-GROWN".

Color	D
Clarity	FL
Cut	Excellent
Depth	61.9%
Table	57.0%
Crown Angle	34.5°
Pavilion Angle	40.8°
Pavilion Depth	43.0%
Girdle Thickness	Faceted, Medium - Slightly Thick
Culet	None
Polish	Excellent
Symmetry	Excellent

Total Retail Replacement Value

\$ 17,900.00 US

Seventeen thousand, nine hundred & 00/100 dollars US

Date: February 5, 2026

Alan Tonkover, G.G., C.G., R.M.V.P.
Graduate Gemologist (GIA)/Appraiser

RETAIL REPLACEMENT VALUE: \$17,900
COMPARE TO INTERNALLY FLAWLESS: \$7,500

Celebrity Diamonds

Appraisal No: 000025308000

Purpose of Appraisal: **Retail Replacement Value**
Function of Appraisal: **Insurance**



One lab grown round brilliant cut diamond, measuring 8.14 - 8.08 x 4.98mm exact total weight 2.01ct. International Gemological Institute Report# LG731566589
Laser inscribed "IGI LG731566589".

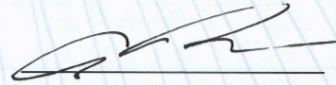
Color	D
Clarity	IF
Cut	Ideal
Depth	61.4%
Table	57.0%
Crown Angle	34.0°
Pavilion Angle	40.9°
Pavilion Depth	43.5%
Girdle Thickness	Medium
Culet	Pointed
Polish	Excellent
Symmetry	Excellent

Total Retail Replacement Value

\$ 7,500.00 US

Seven thousand, five hundred & 00/100 dollars US

Date: November 4, 2025

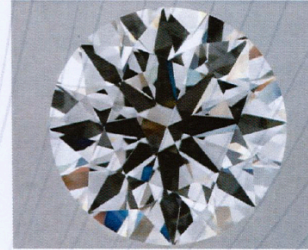

Alan Tonkover, G.G., C.G., R.M.V.P.
Graduate Gemologist (GIA)/Appraiser

RETAIL REPLACEMENT VALUE: \$7,500
COMPARE TO FLAWLESS: \$17,900

Celebrity Diamonds

Appraisal No: 000026036003

Purpose of Appraisal: **Retail Replacement Value**
Function of Appraisal: **Insurance**



One lab grown round brilliant cut diamond, measuring 8.19 - 8.16 x 4.97mm exact weight 2.02ct. International Gemological Institute Report# LG707513464
Laser inscribed "IGI LG707513464".

Color	D
Clarity	VVS-2
Cut	Ideal
Depth	60.8%
Table	57.0%
Crown Angle	33.8°
Pavilion Angle	40.9°
Pavilion Depth	43.0%
Girdle Thickness	Faceted, Medium - Slightly Thick
Culet	None
Polish	Excellent
Symmetry	Excellent

Total Retail Replacement Value

\$ 5,065.00 US

Five thousand, sixty-five & 00/100 dollars US

Date: February 5, 2026

Alan Tonkover, G.G., C.G., R.M.V.P.
Graduate Gemologist (GIA)/Appraiser

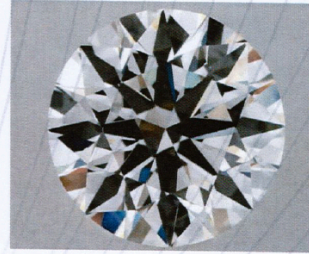
RETAIL REPLACEMENT VALUE: \$5,085
COMPARE TO FLAWLESS: \$17,900

© 2024 GemPages

Celebrity Diamonds

Appraisal No: 000026036001

Purpose of Appraisal: **Retail Replacement Value**
Function of Appraisal: **Insurance**



One lab grown round brilliant cut diamond, measuring 8.23 - 8.18 x 4.93mm exact weight 2.01ct. International Gemological Institute Report# LG705520091
Laser inscribed "IGI "LG705520091".

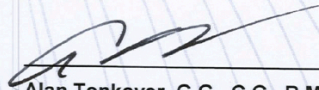
Color	D
Clarity	VS-1
Cut	Ideal
Depth	60.1%
Table	59.0%
Crown Angle	33.6°
Pavilion Angle	41.1°
Pavilion Depth	43.5%
Girdle Thickness	Faceted, Medium
Culet	None
Polish	Excellent
Symmetry	Excellent

Total Retail Replacement Value

\$ 3,425.00 US

Three thousand, four hundred and twenty-five & 00/100 dollars US

Date: February 5, 2026


Alan Tonkover, G.G., C.G., R.M.V.P.
 Graduate Gemologist (GIA)/Appraiser

RETAIL REPLACEMENT VALUE: \$3,425
COMPARE TO FLAWLESS: \$17,900

#2

THEY ARE COLORLESS (D)

THE HIGHEST GRADE OF COLORLESS IN THE WORLD



Our VVR™ Diamonds are certified COLOR D because they are colorless. Color D is the highest color grade a diamond can have. 99% of our competitors sell colors E through Z. Not us. Diamond color refers to the absence of color, with completely colorless diamonds being the most valuable and "RAREST". The GIA color grading scale ranges from D (colorless) to Z, with each letter grade representing a subtle increase in color saturation. Color becomes increasingly noticeable as carat weight increases, making color grade particularly important when selecting larger diamonds. Can you see a big difference in color E than D? Not with the human eye. But when it comes to the resale value of a diamond, a D colorless diamond will sell much higher than a diamond with any color, even if it is just E. I find it funny when I walk into another jeweler. Some tell me they sell color E or F and they are the same as D. They do not know I am a Diamond Dealer. The truth is when I buy a diamond and it is color E or F it cost me a fraction of the price. DEF may be close on the grand scale of life. But E and F are not D. They are not 100% colorless. And for that reason, we opened Celebrity Diamonds with one goal in mind - Sell Flawless VVR™ Diamonds.



#3

THEY ARE SUPER IDEAL CUT

THE HIGHEST GRADE OF PRECISION CUTTING IN THE WORLD



20-30% of diamonds qualify as an EXCELLENT cut. That's a lot! However, only 3% of all EXCELLENT cut grades qualify in the top-tier IDEAL. What is AWESOME is this. Only 1-3% of IDEAL cuts qualify as SUPER IDEAL. Only High-End Retailers, like Celebrity Diamonds, offer SUPER IDEAL. Why do this matter to you? From the top of the diamond: You can see 8 perfectly aligned arrows. From the bottom of the diamond: You can see 8 identical heart shapes. These shapes were not carved into the diamond. They naturally appear when the diamond has perfect proportions, symmetry, alignment and all its 58 facets are perfectly matched.

SUPER IDEAL CUT = SUPER VERY STRICT QUALIFICATIONS

1. TABLE RANGE = 54-56%
2. CROWN ANGLE = 34.3 - 35.0 Degrees
3. PAVILLION ANGLE = 40.7 - 40.8 Degrees
4. TOTAL DEPTH = 61.2-62.0%
5. GIRDLE THICKNESS = Thin to Medium or Medium to Slightly Thick
6. GIRDLE = Faceted
7. CULET = None or Pointed
8. POLISH = Excellent
9. SYMMETRY = Excellent
10. ALL PROPORTIONS = Have to be Perfect

THE HIGHEST OF STANDARDS

1. Perfect Optical Symmetry
2. Extraordinary Precision
3. Visually Perfect
4. All facets cut at matching angles
5. Zero sloppiness in alignment

RESALE VALUE

The Super-Ideal Cut Diamond holds its re-sale value higher than any other diamond cut. When you add that PERFECT cut to a PERFECTLY FLAWLESS diamond that is COLORLESS, you have something that is now much less than .01% of all diamonds on the earth.



INTERNATIONAL GEMOLOGICAL INSTITUTE

LABORATORY GROWN DIAMOND REPORT

October 18, 2025
 IGI Report Number **LG742549188**
 Description **LABORATORY GROWN DIAMOND**
 Shape and Cutting Style **ROUND BRILLIANT**
 Measurements **5.22 - 5.30 X 3.17 MM**

GRADING RESULTS

Carat Weight **0.53 CARAT**
 Color Grade **D**
 Clarity Grade **FLAWLESS**
 Cut Grade **IDEAL**

ADDITIONAL GRADING INFORMATION

Polish **EXCELLENT**
 Symmetry **EXCELLENT**
 Fluorescence **NONE**
 Inscription(s) **IGI LG742549188**

Comments: **HEARTS & ARROWS**
 As Grown - No indication of post-growth treatment.
 This Laboratory Grown Diamond was created by High Pressure High Temperature (HPHT) growth process.

ELECTRONIC COPY

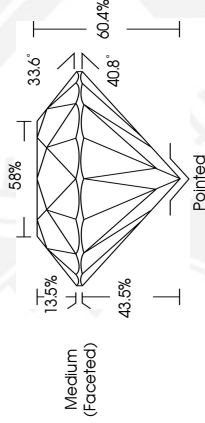
LG742549188



HEARTS & ARROWS



Sample Image Used



THE DOCUMENT WAS PRODUCED WITH THE FOLLOWING SECURITY MEASURES: SPECIAL DOCUMENT PAPER, INK SCREENS, WATERMARK, BACKGROUND DESIGNS, HOLOGRAM AND OTHER SECURITY FEATURES NOT LISTED AND DO EXCEED DOCUMENT SECURITY INDUSTRY GUIDELINES.

For terms & conditions and to verify this report, please visit www.igi.org



October 18, 2025
 IGI Report Number **LG742549188**
 ROUND BRILLIANT
 LABORATORY GROWN DIAMOND
 5.22 - 5.30 X 3.17 MM
 0.53 CARAT
 D
 FLAWLESS
 IDEAL
 EXCELLENT
 EXCELLENT
 EXCELLENT
 NONE
 IGI LG742549188
 Inscription(s)
 Comments: **HEARTS & ARROWS** As Grown - No indication of post-growth treatment. This Laboratory Grown Diamond was created by High Pressure High Temperature (HPHT) growth process. Type II



October 18, 2025
 IGI Report Number **LG742549188**
 ROUND BRILLIANT
 LABORATORY GROWN DIAMOND
 5.22 - 5.30 X 3.17 MM
 0.53 CARAT
 D
 FLAWLESS
 IDEAL
 EXCELLENT
 EXCELLENT
 EXCELLENT
 NONE
 IGI LG742549188
 Inscription(s)
 Comments: **HEARTS & ARROWS** As Grown - No indication of post-growth treatment. This Laboratory Grown Diamond was created by High Pressure High Temperature (HPHT) growth process. Type II

#4

WE ALSO SELL IDEAL CUTS

THE SECOND HIGHEST GRADE OF PRECISION CUTTING IN THE WORLD



GIA
CUT
SCALE

EXCELLENT
VERY GOOD
GOOD
FAIR
POOR

20-30% of diamonds qualify as an EXCELLENT cut. That's a lot! However, only 3% of all EXCELLENT cut grades qualify in the top-tier IDEAL. The cut is what will determine how effectively a diamond's facets interact with light, creating its signature brilliance and sparkle. This is all determined by how well the diamonds facets are proportioned (It's depth %, table %, crown %). The cut quality results from the diamond cutter's skill and precision. A masterfully cut diamond reflects optimal brilliance (white light return), disperses vivid fire-like colors, and creates dynamic sparkle patterns when moved. Think of it like this. EXCELLENT is the best, but an IDEAL CUT is the best of the best. Read the Requirements listed below. If just 1 is off, the diamond cannot be graded as IDEAL.

IDEAL CUT MINIMUM REQUIREMENTS:

1. TOTAL DEPTH = 61.0 - 62.5%
Below can leak light. Above can make it look dark
2. TABLE = 54-57%
Below is less bright. Above reduces fire and contrast
3. CROWN ANGLE = Must be 34-35 degrees
Lower gives less fire. Higher gives less brightness. A bad angle makes a dark center
4. PAVILLION ANGLE = 40.6 - 40.9
Under can leak light out the bottom. Over can create a dark center
5. PAVILLION DEPTH = 42.5% - 43.5%
6. GIRDLE THICKNESS = Medium - Slightly Thick
Very thin or very thick lowers value
7. CULET = None or Pointed
No dark spots
8. POLISH = EXCELLENT
9. SYMMETRY = EXCELLENT
How well the facets align and how precise the shape is
10. ALL PROPORTIONS HAVE TO BE JUST RIGHT



**INTERNATIONAL
GEMOLOGICAL
INSTITUTE**

LABORATORY GROWN DIAMOND REPORT

October 17, 2025
IGI Report Number LG742549155
Description LABORATORY GROWN DIAMOND
Shape and Cutting Style ROUND BRILLIANT
Measurements 5.09 - 5.17 X 3.17 MM

GRADING RESULTS

Carat Weight 0.51 CARAT
Color Grade FLAWLESS
Clarity Grade IDEAL
Cut Grade IDEAL

ADDITIONAL GRADING INFORMATION

Polish EXCELLENT
Symmetry EXCELLENT
Fluorescence NONE
Inscription(s) IGI LG742549155

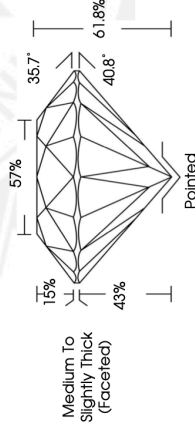
Comments: As Grown - No indication of post-growth treatment.
This Laboratory Grown Diamond was created by High Pressure High Temperature (HPHT) growth process.

ELECTRONIC COPY

LG742549155



Sample Image Used



Medium To Slightly Thick (Faceted)

October 17, 2025
IGI Report Number LG742549155
Description LABORATORY GROWN DIAMOND
Carat Weight 0.51 CARAT
Color Grade FLAWLESS
Clarity Grade IDEAL
Cut Grade EXCELLENT
Polish EXCELLENT
Symmetry EXCELLENT
Fluorescence NONE
Inscription(s) IGI LG742549155
Comments: As Grown - No indication of post-growth treatment. This Laboratory Grown Diamond was created by High Pressure High Temperature (HPHT) growth process. Type II

October 17, 2025
IGI Report Number LG742549155
Description LABORATORY GROWN DIAMOND
Carat Weight 0.51 CARAT
Color Grade FLAWLESS
Clarity Grade IDEAL
Cut Grade EXCELLENT
Polish EXCELLENT
Symmetry EXCELLENT
Fluorescence NONE
Inscription(s) IGI LG742549155
Comments: As Grown - No indication of post-growth treatment. This Laboratory Grown Diamond was created by High Pressure High Temperature (HPHT) growth process. Type II

THIS DOCUMENT WAS PRODUCED WITH THE FOLLOWING SECURITY MEASURES: SPECIAL DOCUMENT PAPER, INK SCREENS, WATERMARK BACKGROUND PATTERN, FOLIOGRAPHY AND OTHER SECURITY FEATURES NOT LISTED AND TOO FENCED DOCUMENT SECURITY PUBLISHING SOLUTIONS.

For terms & conditions and to verify this report, please visit www.igi.org

CELEBRITY DIAMONDS



CUT	EXCELLENT	IDEAL	SUPER IDEAL
GROWTH	LAB GROWN	LAB GROWN	LAB GROWN
JEWEL	DIAMOND	DIAMOND	DIAMOND
CTW	2.0	2.0	2.0
CLARITY	FL	FL	FL
COLOR	D	D	D
POLISH	EXCELLENT	EXCELLENT	EXCELLENT
SYMMETRY	EXCELLENT	EXCELLENT	EXCELLENT
FLOURESCENSE	NONE	NONE	NONE
TABLE	52-62%%	54-57%	54-56% BEST 55%
CROWN ANGLE	31.5 - 36.5%	34-35	34.0-34.8 34.3-34.6 BEST
CROWN DEPTH (HEIGHT)	13-17%%	14-16.5%	14.5-15.5%%
PAVILLION ANGLE	40.2 - 41.8%	40.6-40.9	40.6-40.8
PAVILLION DEPTH	41 - 44.5%	42.5-43.5%%	42.6-43.2%
TOTAL DEPTH	58-63%	60-62.3%	60.5% - 61.8% 61% BEST
GIRDLE	MEDIUM - SLIGHTLY THICK	MEDIUM - SLIGHTLY THICK	THIN - MEDIUM
CULET	POINTED	POINTED	POINTED
HEARTS + ARROWS	NO	NO	YES
SELLING PRICE	\$7,000	\$8,000	\$11,000

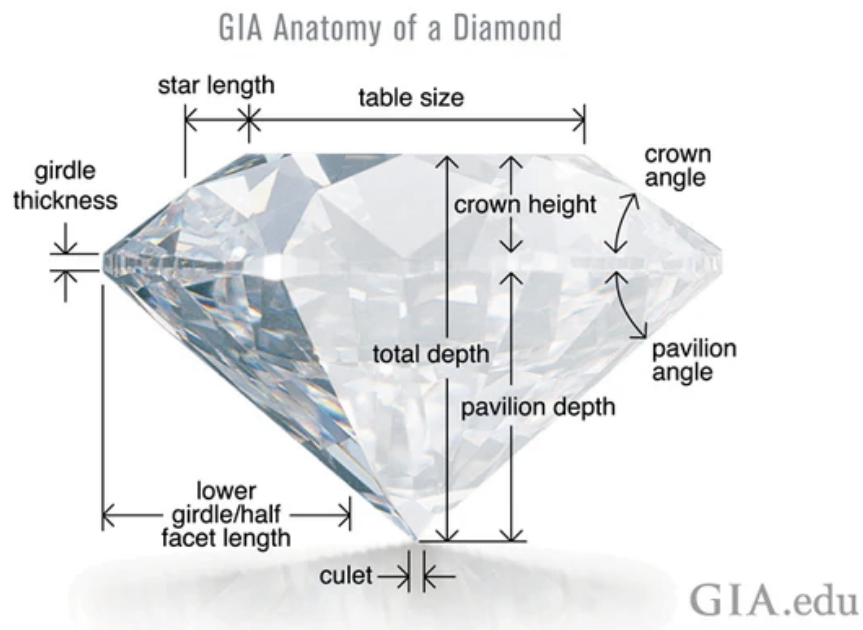
PROPORTIONS DO MATTER

PRECISION CUT COMPARISONS

#5

THEY ARE ROUND BRILLIANT SHAPE

THE MOST SCIENTIFICALLY SHAPED DIAMOND IN THE WORLD
STRATEGICALLY DONE TO REFLECT THE MOST LIGHT



Only 1 Diamond Shape reflects the most light of all diamond shapes on the earth. That is the round brilliant, shaped diamond. This shape is not rare. In fact, it is the most popular. What makes it rare in our company is 2 things. #1 - We only stock this 1 shape. #2 - We only sell VVR™ Round Shaped Diamonds that are Idea Cut or Super Ideal Cut, the highest grading of round shaped diamonds in the world. The round shaped diamond is the only shape that Gemological Institutes can grade by precision cut proportions on the way light reflects off the diamond. This is because it has standardized geometry. Labs can scientifically model light return and symmetry in a round brilliant diamond. All other shapes cannot be graded on their cut quality. That is because they do not have standardized geometry. Their light reflects different per stone. Therefore, they can be graded, but only for their polish + symmetry which does not equally affect resale value.

Jewelers who have a poor cut diamond don't have to worry about a grade report of POOR because their cut quality is never graded. Just another reason we only specialize in selling VVR™ Diamonds that can be graded on their cut quality.

THE PROBLEMS WITH ALL OTHER SHAPES

OVAL

The light varies across the stone.

PEAR

Bow-tie shadows are common.

MARQUIS

Light leaks through the tips.

HEART

It is difficult to even measure light symmetry.

EMERALD

Have reflections that are long lasting and not a sparkle.

CUSHION

Sparkly but uneven, mushy center. Dead or cloudy centers

RADIANT

Corners and ends often go dark. Patchy brightness.

PRINCESS

Its square shape disrupts symmetrical light return. Corners prone to leakage.

ASSCHER

Comon issue is a dead center or dull steps if proportions are off.

ALL OTHERS

Will show uneven light return to some degree because the facet pattern isn't perfectly radial.



#6 THEY HAVE NO FLOURESCENCE

THE ONLY FLOURESCENCE LEVEL THAT KEEPS A DIAMOND LOOKING PURE



Our VVR™ Diamonds have no fluorescence in them. That means our diamonds will appear the same in every lighting condition. No blue glow in sunlight, clubs, UV lights, etc. Nothing is added or removed from the diamond's appearance. No oiliness, no haze, no extra brightness - just neutral. It is neutral for value. It keeps the stone looking pure. Having no fluorescence also increases resale confidence.



GIA REPORT
5516819132

Verify this report at GIA.edu

FACSIMILE
* This is a digital representation of the original GIA Report. This representation might not be accepted in lieu of the original GIA Report in certain circumstances. The original GIA Report includes certain security features which are not reproducible on this facsimile.

GIA NATURAL DIAMOND GRADING REPORT

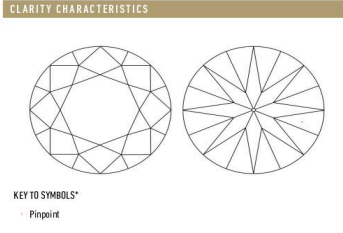
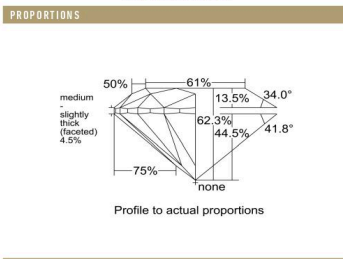
April 08, 2025
 GIA Report Number 5516819132
 Shape and Cutting Style Round Brilliant
 Measurements 6.35 - 6.39 x 3.97 mm

GRADING RESULTS

Carat Weight 1.00 carat
 Color Grade D
 Clarity Grade VS1
 Cut Grade Excellent

ADDITIONAL GRADING INFORMATION

Polish Excellent
 Symmetry Excellent
 Fluorescence Very Strong Blue
 Inscription(s): GIA 5516819132
 Comments: Internal graining is not shown. Surface graining is not shown.



GRADING SCALES

GIA COLOR SCALE	GIA CLARITY SCALE	GIA CUT SCALE
D	FLAWLESS	EXCELLENT
E	INTERNALLY FLAWLESS	
F		VVS ₁
G	VVS ₂	
H	VS ₁	GOOD
I	VS ₂	
J	SI ₁	FAIR
K		
L	SI ₂	POOR
M	I ₁	
N	I ₂	
O		
P		
Q		
R		
S		
T		
U		
V		
W		
X		
Y		
Z		



The results documented in this report refer only to the diamond described, and were obtained using the techniques and equipment available to GIA at the time of examination. This report is not a guarantee or valuation. For additional information and important limitations and disclosures, please see GIA.edu/forms or call 1-800-421-7233 or +1-760-862-0300. ©2023 Gemological Institute of America, Inc.



THE SECURITY FEATURES IN THIS DOCUMENT, INCLUDING THE MULTILEVEL SECURITY DESIGN AND MULTIFACTOR CHECK, IN ADDITION TO THESE, NOT LISTED, ENRICH DOCUMENT SECURITY INDUSTRY GUIDELINES.


#7

THEY HAVE NO POST GROWTH TREATMENT

NOTHING MAN MADE IS NEEDED TO IMPROVE THEM



We do not sell diamonds with any post growth treatments to improve their color or appearance. Our competitors use post growth treatments to remove unwanted brown or gray tones on their diamonds. Post growth treatment can change a diamonds color into the DEF range. Our VVR™ Diamonds are naturally colorless. Using post growth treatments to change the natural properties of the diamond decreases its re-sale value. Why? Because untreated lab diamonds are rarer and much harder to find. Think of it like this. Do you want to buy fresh beef that is red or 1 week old beef that has been colored red because it is turning brownish grey? A post growth treated diamond will look beautiful; however, it's diamond grade report will mention the diamond was "treated" to look beautiful. Compared to a Non-Post Growth Treated Diamond, the non-treated will always be worth more.

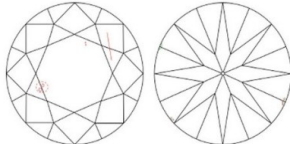
LGDR 

LABORATORY-GROWN DIAMOND REPORT
February 16, 2021
GIA Report Number..... 6214478949
Identification..... Laboratory-Grown
Shape and Cutting Style..... Round Modified Brilliant
Measurements..... 9.65 - 9.72 x 6.34 mm

LABORATORY-GROWN DIAMOND SPECIFICATIONS*
Carat Weight..... 2.00 carat
Color..... D
Clarity..... SI1

ADDITIONAL INFORMATION
Polish..... Excellent
Symmetry..... Excellent
Fluorescence..... Medium Blue
Inscription(s): GIA 6214478949, LABORATORY-GROWN
Comments:
This is a man-made diamond produced by CVD (Chemical Vapor Deposition) growth process and has evidence of post-growth treatments to change the color.

PROPORTIONS
68%
medium - slightly thick (faceted)
65.5%
none
Profile not to actual proportions

CLARITY CHARACTERISTICS


#8

THEY ARE TOP TIER CERTIFIED

BY THE TOP GRADING INSTITUTE IN THE WORLD



IGI

GCAL
GEM CERTIFICATION & ASSURANCE LAB
ISO 17025 ACCREDITED FORENSIC LABORATORY



GIA®

Anyone can claim their Diamonds are rare and flawless, but we find most jewelers are just using those 2 words as adjectives describing their opinion. Our diamonds are TOP TIER certified by 3 of the most respected Gemological Institutes on the Earth, GIA, GCAL and IGI. All diamonds on this website, titled VVR™, are FL and/or IF, and have TOP TIER Certifications to back them up. The fact that flawless diamonds represent 0.01% of all diamonds on the world market, that gives us the authority to claim our diamonds are truly VVR™ - Very very rare. When a diamond is graded and then certified with one of our TOP TIER Certifications, it is evaluated on its QUALITY, BEAUTY and RARITY by measuring the diamonds cut, clarity, color and weight using microscopes, proportion analysis and standardized lighting. The goal: Determine its quality, value and authenticity. Our flawless diamonds are the certified highest quality on the earth. This is not an opinion. This is TRUTH based upon their Diamond Grade Reports. Just a little research, and that is all it takes to understand exactly why we call them VVR™.

#9

THEIR SUPPLY IS VERY LIMITED

THEY ARE THE RAREST DIAMONDS FOUND IN THE WORLD



INCREASED LONG TERM VALUE

Do we have a huge inventory of these VVR Diamonds? No. We wish we did. If their supply was large, their price would be low, and everybody would have them. But that is not the case. They are very rare to find, and their prices increase over time. How come? Because the population keeps increasing the demand, but the supply is not increasing in equal proportion. We challenge you to call all your local jewelers and then call 100 more. Ask them all if they have FLAWLESS diamonds. You will then know why we call ours VVR™.

HOW DO WE GET THEM

We have a direct connection to a family that creates them overseas in the lab. When we place an order, sometimes we get 6, sometimes 10, sometimes 18 but sometimes only 2. Establishing connections like this is very rare in itself. You can't force a diamond to come out FLAWLESS. It comes out flawless when it comes out flawless.

VERY VERY RARE

We guarantee you, that if you go to any event, and I don't care if it's an event with 500 - 1,000 wedding guests, if you have on one of our VVR™ Diamonds, the odds are not a single person at that event has a FLAWLESS diamond on. And for this reason, we decided to open Celebrity Diamonds.

#10.

THEY ARE APPRAISED BY A MASTER VALUER

BECAUSE AUTHENTIC APPRAISALS DO MATTER



Celebrity Diamonds Appraisal No: 000025308001

Purpose of Appraisal: **Retail Replacement Value**
Function of Appraisal: **Insurance**

One lab grown round brilliant cut diamond, measuring 9.23 - 9.19 x 5.71mm exact weight 3.00ct. International Gemological Institute Report# LG680583406
Laser inscribed "IGI LG680583406".

Color	D
Clarity	IF
Cut	Ideal
Depth	62.0%
Table	57.0%
Crown Angle	36.0°
Pavilion Angle	40.5°
Pavilion Depth	42.5%
Girdle Thickness	Faceted, Medium
Culet	Pointed
Polish	Excellent
Symmetry	Excellent

Total Retail Replacement Value \$ 16,085.00 US

Sixteen thousand, eighty-five & 00/100 dollars US

Date: November 4, 2025

Alan Tonkover, G.G., C.G., R.M.V.P.
Graduate Gemologist (GIA)/Appraiser



VALUE
\$265.00 Each

PAGES
5

INCLUDED
With all VVR™ FLAWLESS
Diamond Sales
Clarity Grades: IF + FL

COMPLETED BY
Alan Tonkover
G.G., C.G., R.M.V.P.
A.R.T. Jewelry LLC.
267 Main Street, East
Greenwich, RI 02818
401.228.7760

CREDENTIALS
Registered Jeweler of the
American Gem Society
Certified Insurance Appraiser,
JIBNA (C.I.A.)
GIA Accredited Jewelry
Professional
GIA Certified Graduate
Gemologist
Registered Master Valuer
(R.M.V.P.)
Expert Appraiser of Fine
Jewelry
GIA Pearl Graduate

MEMBERSHIPS
American Gem Trade
Association
National Association of
Jewelry Appraisers
GIA Alumni Association