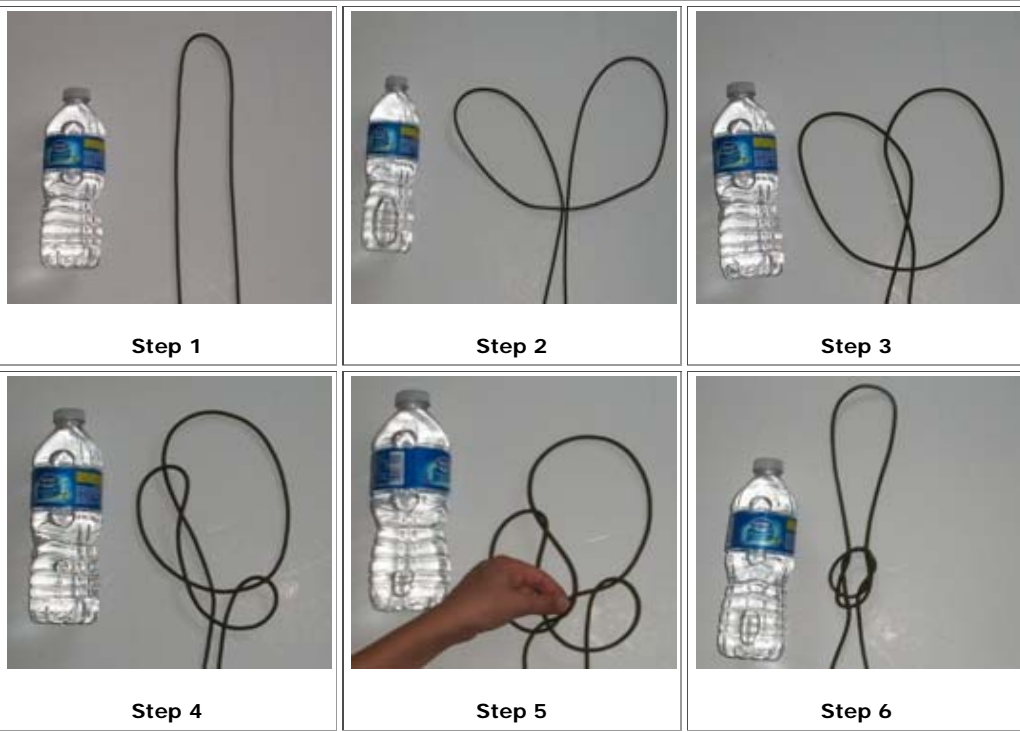


The Water Bottle Knot



- **Step 1:** Start with a length of cord and form a loop. Make the ends longer if you intend to tie to a tree and submerge the bottle(s) in a creek or stream. You can use a shorter length if you're making a belt carrying loop.
- **Step 2:** Bend the top of the loop down to form two 'ears'.
- **Step 3:** Pull the right 'ear' over the left ear to form an inner loop.
- **Step 4:** Bend the left 'ear' down and to the left.
- **Step 5:** Grasping the 2 lower ends of the rope, pinch the rope (as pictured) and pull gently on the ends as the bottle knot forms.
- **Step 6:** Work with the rope to form the knot as pictured, so that you can slip the knot over the top of the water bottle.