

SMALL POWER LEGEND

- TP&N DISTRIBUTION BOARD (SIZES DENOTED)  
(AS SCHNEIDER ACT19 ISOBAR P TYPE OR EQUAL  
AND APPROVED)
- FLEX CONNECTION UNIT - SWITCHED
- TWIN SWITCHED SOCKET OUTLET
- SINGLE SWITCHED SOCKET OUTLET
- 20A DOUBLE POLE ISOLATOR
- SINGLE UNSWITCHED SOCKET OUTLET
- \*A SINGLE PHASE ISOLATOR
- \*A THREE PHASE ISOLATOR

DATA LEGEND

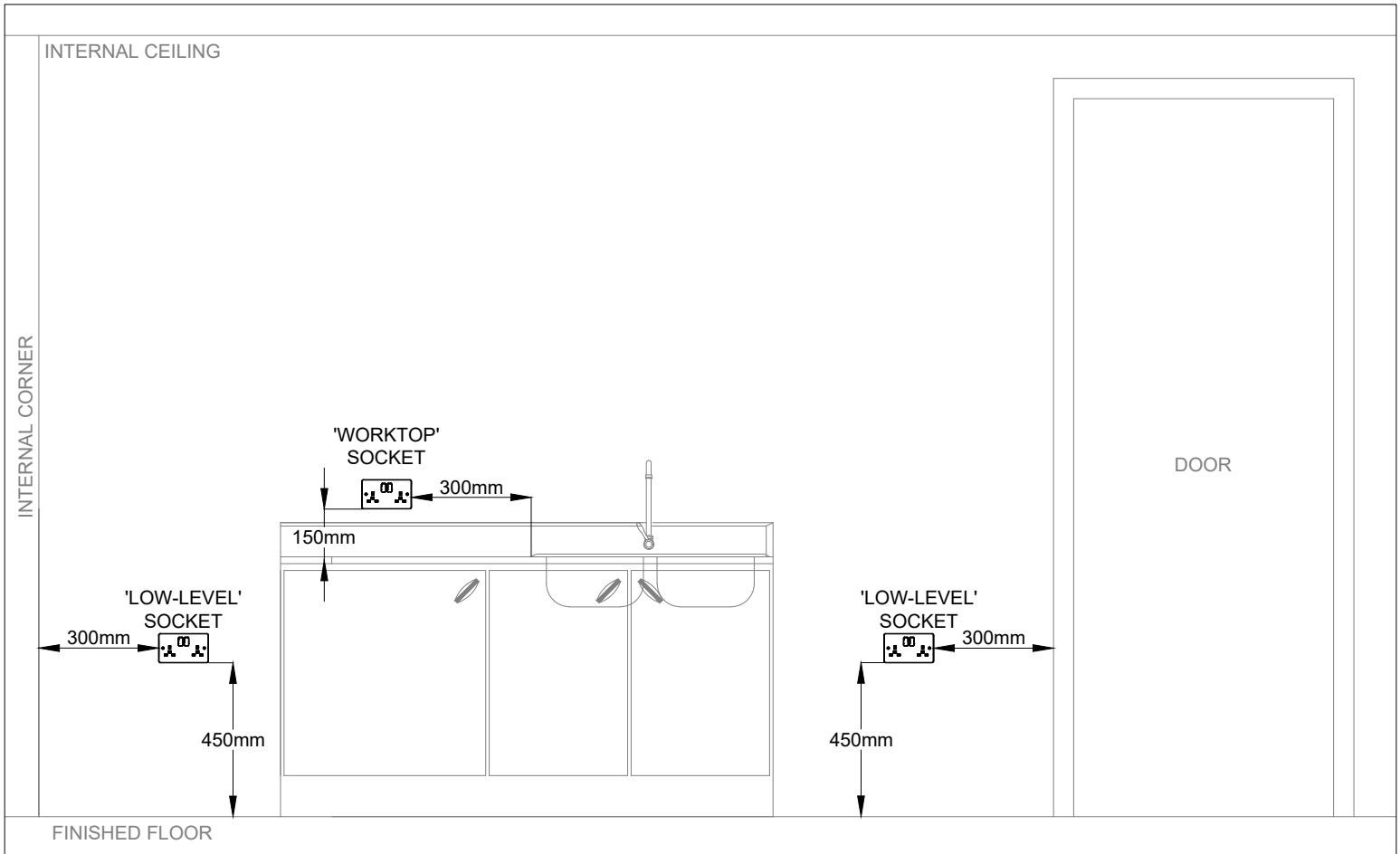
- RJ45 DATA OUTLET
- WIFI
- EXISTING BT INTAKE POINT  
(SUITABLE FOR HIGH-SPEED ELECTRONIC  
COMMUNICATIONS)
- COUNTER INDUCTION LOOP
- FIXED INDUCTION LOOP AMPLIFIER
- FLAT INDUCTION LOOP CABLE  
(INSTALLATION LOCATION TBC BY SPECIALISTS)

This drawing is copyright of IPME. It may not be copied or disclosed to any third party for any purpose except as authorised in writing by IPME. All dimensions in millimetres unless otherwise stated. Do not scale from this drawing. Figured dimensions only are to be used. Dimensions are to be checked on site before work proceeds. IPME does not accept legal and design liability for any amendments made by any individual or organisation to this drawing or any additional documents and contract documents including previous issues of such, unless confirmed by an authorised signatory of IPME.

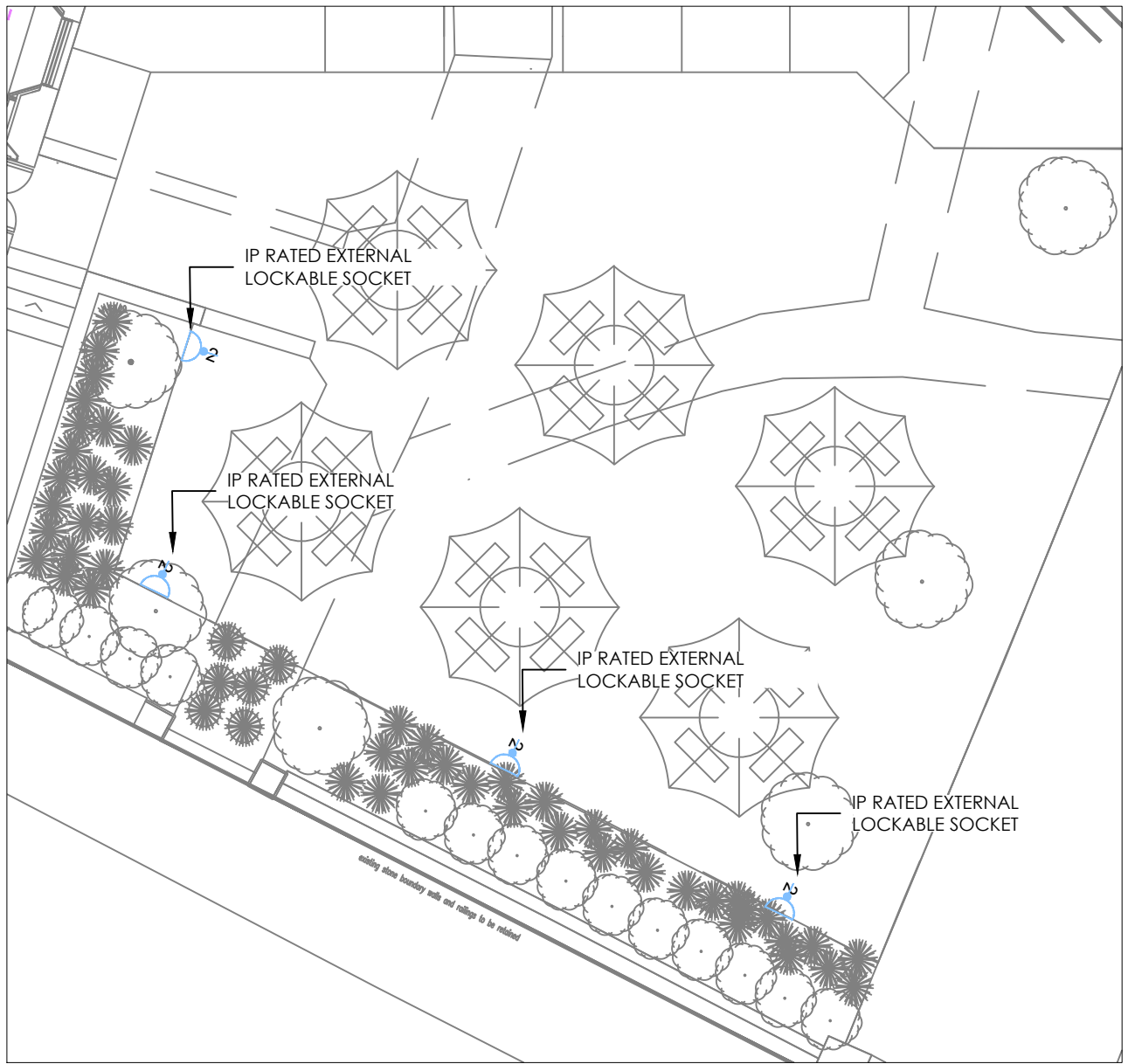
CDM: Hazard Elimination & Risk Reduction has been undertaken and recorded where appropriate. In accordance with the requirements of 'The Construction (Design and Management) Regulations 2015' and the associated 'Industry Guidance for Designers'.

BUILDING STANDARDS NOTES

- ELECTRICAL INSTALLATION**  
THE ELECTRICAL INSTALLATION SHALL COMPLY WITH SECTION 4.5 (ELECTRICAL SAFETY) THROUGH COMPLIANCE WITH THE CURRENT EDITION OF IET WIRING REGULATIONS BS7671 & AMENDMENTS.
- EMERGENCY LIGHTING**  
EMERGENCY LIGHTING SHALL COMPLY WITH SECTION 2.10 (ESCAPE LIGHTING). EMERGENCY LIGHTING SHALL COMPLY WITH BS 5266 AND BS EN 1838. THE SYSTEM COMPRISES OF LED LUMINAIRES AND SHALL PROVIDED 3 HOUR EMERGENCY ILLUMINATION IN THE EVENT OF LOCAL AND GENERAL ELECTRICAL SUPPLY FAILURE.
- FIRE DETECTION AND ALARM SYSTEM**  
THE AUTOMATIC FIRE DETECTION SYSTEM SHALL COMPLY WITH THE CURRENT EDITION OF BS 5839-1 AND SHALL BE DESIGNED / INSTALLED TO CATEGORY L1.
- ELECTRICAL FIXTURES**  
ELECTRICAL FIXTURES SHALL BE LOCATED IN ACCORDANCE WITH SECTION 4.8.6 (ACCESS TO MANUAL CONTROLS).  
ELECTRICAL ACCESSORIES SHALL BE INSTALLED AT THE FOLLOWING HEIGHTS ABOVE THE FINISHED FLOOR LEVEL:
  - OUTLETS TO BE PLACED BETWEEN 450mm AND 1200mm
  - LIGHT SWITCHES TO BE PLACED BETWEEN 900mm AND 1100mmELECTRICAL OUTLETS AND CONTROLS SHALL BE LOCATED AT A DISTANCE GREATER THAN 350mm FROM ANY INTERNAL CORNER, PROJECTING WALL OR SIMILAR OBSTRUCTION.
- LIGHTING INSTALLATION**  
THE LIGHTING INSTALLATION SHALL COMPLY WITH SECTION 6.5 (ENERGY, ARTIFICIAL AND DISPLAY LIGHTING) THROUGH COMPLIANCE WITH CIBSE CODE FOR LIGHTING, DISPLAY LIGHTING TO BE NOTED.
- COMMISSIONING**  
THE ELECTRICAL AND MECHANICAL SYSTEMS SHALL BE COMMISSIONED IN LINE WITH CIBSE AND BSRIA COMMISSIONING GUIDES TO COMPLY WITH SECTION 6.7 (ENERGY COMMISSIONING BUILDING SERVICES).
- WRITTEN INFORMATION**  
COMPLIANCE WITH SECTION 6.8 (ENERGY - WRITTEN INFORMATION) SHALL BE ACHIEVED THROUGH PROVISION OF H&S FILES PROVIDED BY THE CONTRACTOR.
- METERING**  
METERING SHALL BE INSTALLED IN ACCORDANCE WITH SECTION 6.10 (ENERGY - METERING).



SMALL POWER & ICT COMMS ACCESSORIES TYPICAL MOUNTING HEIGHT  
SCALE 1:20



COURTYARD SMALL POWER LAYOUT  
SCALE 1:100

A	Issued for Building Warrant	12/03/24
Rev	Description	Date
<b>IPME</b>		
Unit 4B Gateway Business Park, Beancross Road, Grangemouth, FK3 8WX		
Building Services   Mechanical   Electrical   Low Carbon Sustainable Engineering by Design		
Low Carbon Energy Assessor Scotland		
Heat Historic Consultant		
Client Dunblane Square Limited		
Project The Bank, Dunblane		
Project No. 23009		
Drawing No. 23009-IPME-XXXX-GF-DR-E-62001		
Revision A		
Electrical Engineering Services Small Power & Data Layout		
Status S2 - FOR INFORMATION		
Date Created March 24		Drawn by DC
Scale 1:50		Sheet @ A1