

FIRE ALARM LEGEND

- FAP** EN 54-2, 54-4 & 54-13, 2-LOOP, OPEN PROTOCOL, FULLY PROGRAMMABLE, FULLY NETWORKABLE, DIGITABLE ADDRESSABLE FIRE ALARM CONTROL PANEL C/W A RAL 7035 SURFACE MOUNTED STEEL ENCLOSURE, 2Nr. 12V 17Ah VRLA BATTERIES & A BACKLIT GRAPHICAL LDC DISPLAY
- SO** EN 54-11 ADDRESSABLE INDOOR MANUAL CALL POINT (RED IN COLOUR) C/W SHORT-CIRCUIT ISOLATOR, DUAL COLOUR LED INDICATION, PLASTIC HINGED COVER AND STANDARD SURFACE MOUNTED BACK BOX. CALL POINT TYPE: DEFORMABLE ELEMENT
- SO** EN 54-7 DIGITAL ADDRESSABLE OPTICAL DETECTOR C/W STANDARD SURFACE MOUNTING CONVENTIONAL BASE
- HC** EN 54-7 DIGITAL ADDRESSABLE COMBINATION HEAT DETECTOR C/W STANDARD SURFACE MOUNTING CONVENTIONAL BASE
- CM** EN 54-7 DIGITAL ADDRESSABLE CARBON MONOXIDE DETECTOR C/W STANDARD SURFACE MOUNTING CONVENTIONAL BASE
- SO** EN 54-7 DIGITAL ADDRESSABLE OPTICAL DETECTOR MOUNTED IN CEILING VOID C/W STANDARD SURFACE MOUNTING CONVENTIONAL BASE
- SO** EN 54-7 DIGITAL ADDRESSABLE OPTICAL DETECTOR C/W EN 54-23 ADDRESSABLE BASE SOUNDER BEACON VAD (STANDARD POWER) C/W BUILT-IN ISOLATOR
- HC** EN 54-7 DIGITAL ADDRESSABLE HEAT DETECTOR C/W EN 54-23 ADDRESSABLE BASE SOUNDER BEACON VAD (STANDARD POWER) C/W BUILT-IN ISOLATOR
- SO** WALL MOUNTED, ADDRESSABLE SOUNDER BEACON (RED IN COLOUR) CAPABLE OF INDEPENDENT CONTROL OF THE SOUNDER AND BEACON
- FA** SURFACE MOUNTED, IP55, ADDRESSABLE OPEN-AREA SOUNDER BEACON (RED IN COLOUR) CAPABLE OF INDEPENDENT CONTROL OF THE SOUNDER AND BEACON
- IF** EN 54-17, EN 54-18, SURFACE MOUNTED, IP52, ADDRESSABLE INTELLIGENT INPUT/OUTPUT UNIT C/W CONTROLLABLE ISOLATOR AND FAILSAFE MODE IN LINE WITH THE REQUIREMENTS OF BS 7273-4

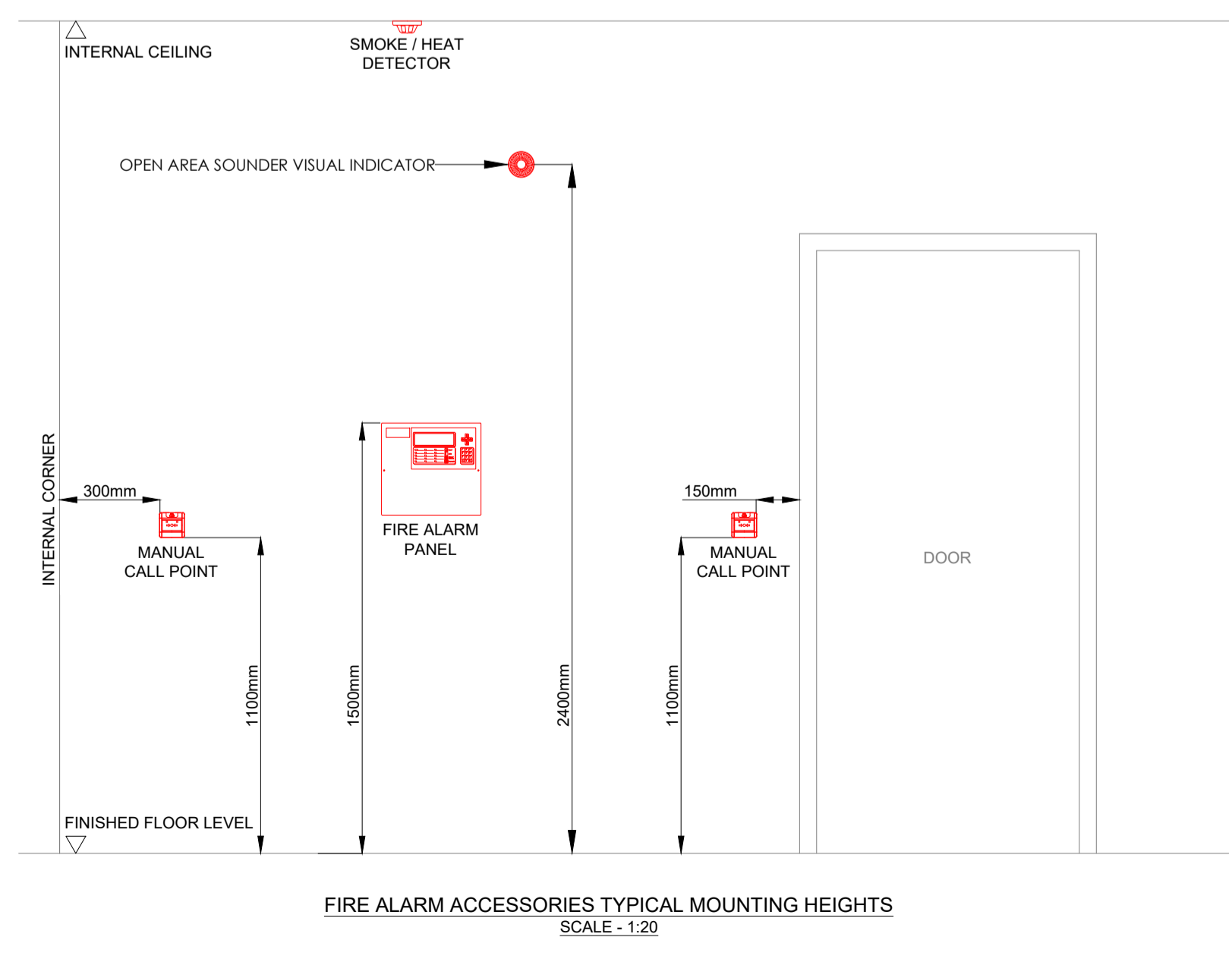
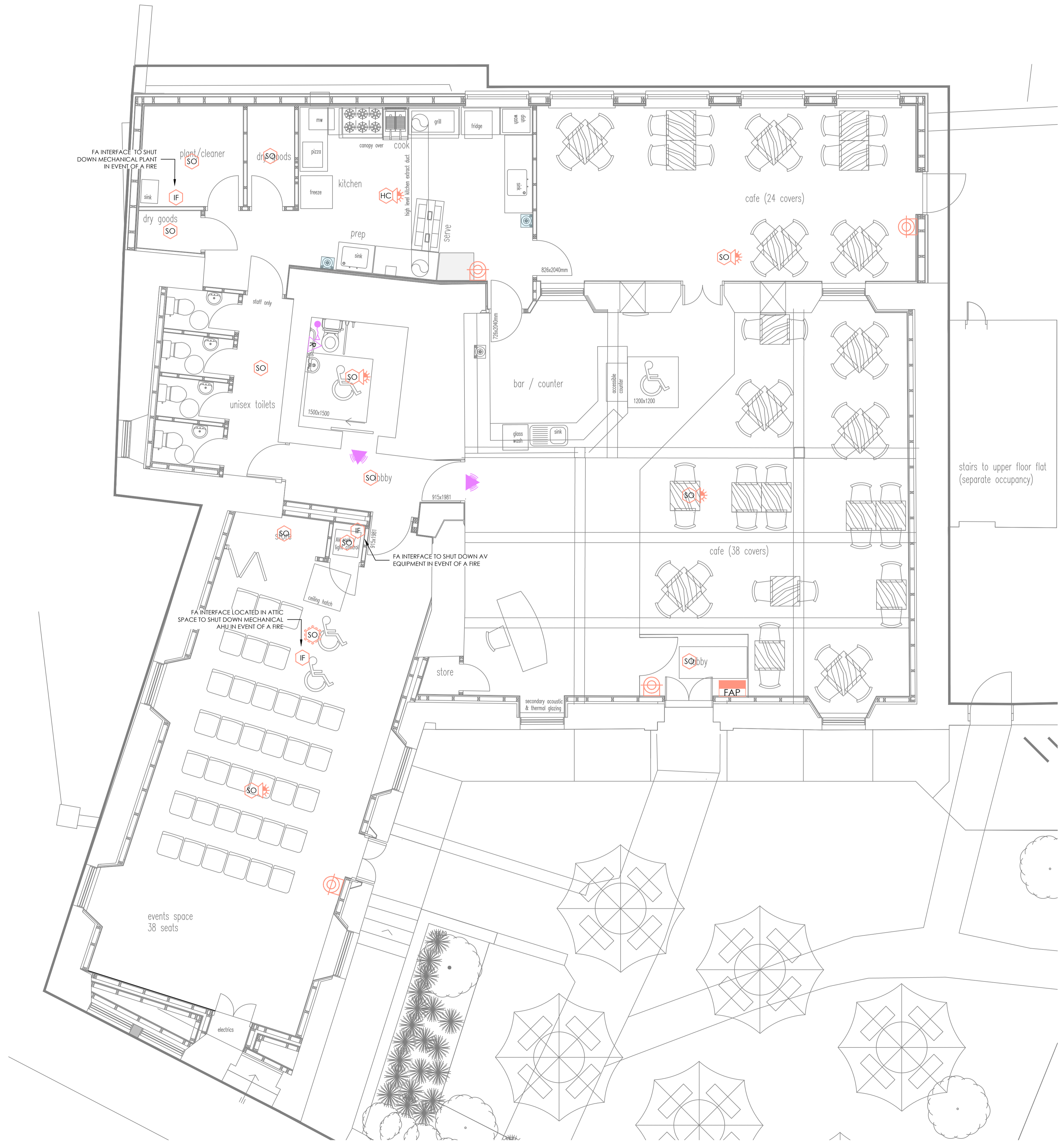
DISABLED WC ALARM LEGEND

- SO** BS 8300:2018 SURFACE MOUNTED, CEILING PULL SWITCH (WHITE) C/W 2Nr. COMPLIANT 'G' PULLS (RED) REASSURANCE LIGHT C/W ROUNDED SURFACE BOX
- SO** BS 8300:2018 FLUSH MOUNTED, OVER-DOOR LIGHT C/W TRIANGULAR LENS & INTEGRAL SOUNDER (WHITE) MOUNTED ABOVE THE ACCESSIBLE W/C DOOR (OR AS SHOWN) C/W BS 4662:2006+A1:2009 2-GANG, 25mm DEEP FLUSH MOUNTING BOX
- R** BS 8300:2018 FLUSH MOUNTED, LOCAL RESET POINT C/W RESET BUTTON, INTEGRAL LED & SOUNDER (WHITE) MOUNTED AT MIN 900mm TO THE BOTTOM OF THE ACCESSORY AND 1200mm TO THE TOP OF THE ACCESSORY AFFL C/W BS 4662:2006+A1:2009 2-GANG, 25mm DEEP FLUSH MOUNTING BOX

This drawing is copyright of IPME. It may not be copied or disclosed to any third party for any purpose except as authorised in writing by IPME. All dimensions in millimetres unless otherwise stated. Do not scale from this drawing. Figured dimensions only are to be used. Dimensions are to be checked on site before work proceeds. IPME does not accept legal and design liability for any amendments made by any individual or organisation to the drawing or any additional documents and contract documents including previous issues of such, unless confirmed by an authorised signatory of IPME.
 CDM: Hazard Elimination & Risk Reduction has been undertaken and recorded where appropriate. In accordance with the requirements of 'The Construction (Design and Management) Regulations 2015' and the associated 'Industry Guidance for Designers'.

BUILDING STANDARDS NOTES

1. **ELECTRICAL INSTALLATION**
 THE ELECTRICAL INSTALLATION SHALL COMPLY WITH SECTION 4.5 (ELECTRICAL SAFETY) THROUGH COMPLIANCE WITH THE CURRENT EDITION OF IET WIRING REGULATIONS BS7671 & AMENDMENTS.
2. **EMERGENCY LIGHTING**
 EMERGENCY LIGHTING SHALL COMPLY WITH SECTION 2.10 (ESCAPE LIGHTING); EMERGENCY LIGHTING SHALL COMPLY WITH BS 5266 AND BS EN 1838. THE SYSTEM COMPRISES OF LED LUMINAIRES AND SHALL PROVIDED 3 HOUR EMERGENCY ILLUMINATION IN THE EVENT OF LOCAL AND GENERAL ELECTRICAL SUPPLY FAILURE.
3. **FIRE DETECTION AND ALARM SYSTEM**
 THE AUTOMATIC FIRE DETECTION SYSTEM SHALL COMPLY WITH THE CURRENT EDITION OF BS 5839-1 AND SHALL BE DESIGNED / INSTALLED TO CATEGORY L1.
4. **ELECTRICAL FIXTURES**
 ELECTRICAL FIXTURES SHALL BE LOCATED IN ACCORDANCE WITH SECTION 4.8.6 (ACCESS TO MANUAL CONTROLS).
 ELECTRICAL ACCESSORIES SHALL BE INSTALLED AT THE FOLLOWING HEIGHTS ABOVE THE FINISHED FLOOR LEVEL:
 - OUTLETS TO BE PLACED BETWEEN 450mm AND 1200mm
 - LIGHT SWITCHES TO BE PLACED BETWEEN 900mm AND 1100mm
 ELECTRICAL OUTLETS AND CONTROLS SHALL BE LOCATED AT A DISTANCE GREATER THAN 350MM FROM ANY INTERNAL CORNER, PROJECTING WALL OR SIMILAR OBSTRUCTION.
6. **LIGHTING INSTALLATION**
 THE LIGHTING INSTALLATION SHALL COMPLY WITH SECTION 6.5 (ENERGY, ARTIFICIAL AND DISPLAY LIGHTING) THROUGH COMPLIANCE WITH CIBSE CODE FOR LIGHTING, DISPLAY LIGHTING TO BE NOTED.
7. **COMMISSIONING**
 THE ELECTRICAL AND MECHANICAL SYSTEMS SHALL BE COMMISSIONED IN LINE WITH CIBSE AND BSRIA COMMISSIONING GUIDES TO COMPLY WITH SECTION 6.7 (ENERGY COMMISSIONING BUILDING SERVICES).
8. **WRITTEN INFORMATION**
 COMPLIANCE WITH SECTION 6.8 (ENERGY - WRITTEN INFORMATION) SHALL BE ACHIEVED THROUGH PROVISION OF H&S FILES PROVIDED BY THE CONTRACTOR.
9. **METERING**
 METERING SHALL BE INSTALLED IN ACCORDANCE WITH SECTION 6.10 (ENERGY - METERING).



Rev	Description	Date
A	Issued for Building Warrant	12/03/24



Unit 48 Gateway Business Park,
 Beacroft Road,
 Grangemouth,
 FK3 8WX
 Building Services | Mechanical | Electrical | Low Carbon
 Sustainable Engineering by Design
 Low Carbon Energy Assessor
 Health & Safety Consultant

Client
 Dunblane Square Limited
 Project
 The Bank, Dunblane
 Project No. 23009
 Drawing No. 23009-IPME-XXXX-GF-DR-E-68001
 Revision A

Electrical Engineering Services
 Fire Detection & Alarm
 Layout
 Status
 S2 - FOR INFORMATION
 Date Created March 24
 Drawn by DC
 Scale 1:50
 Sheet @ A1