



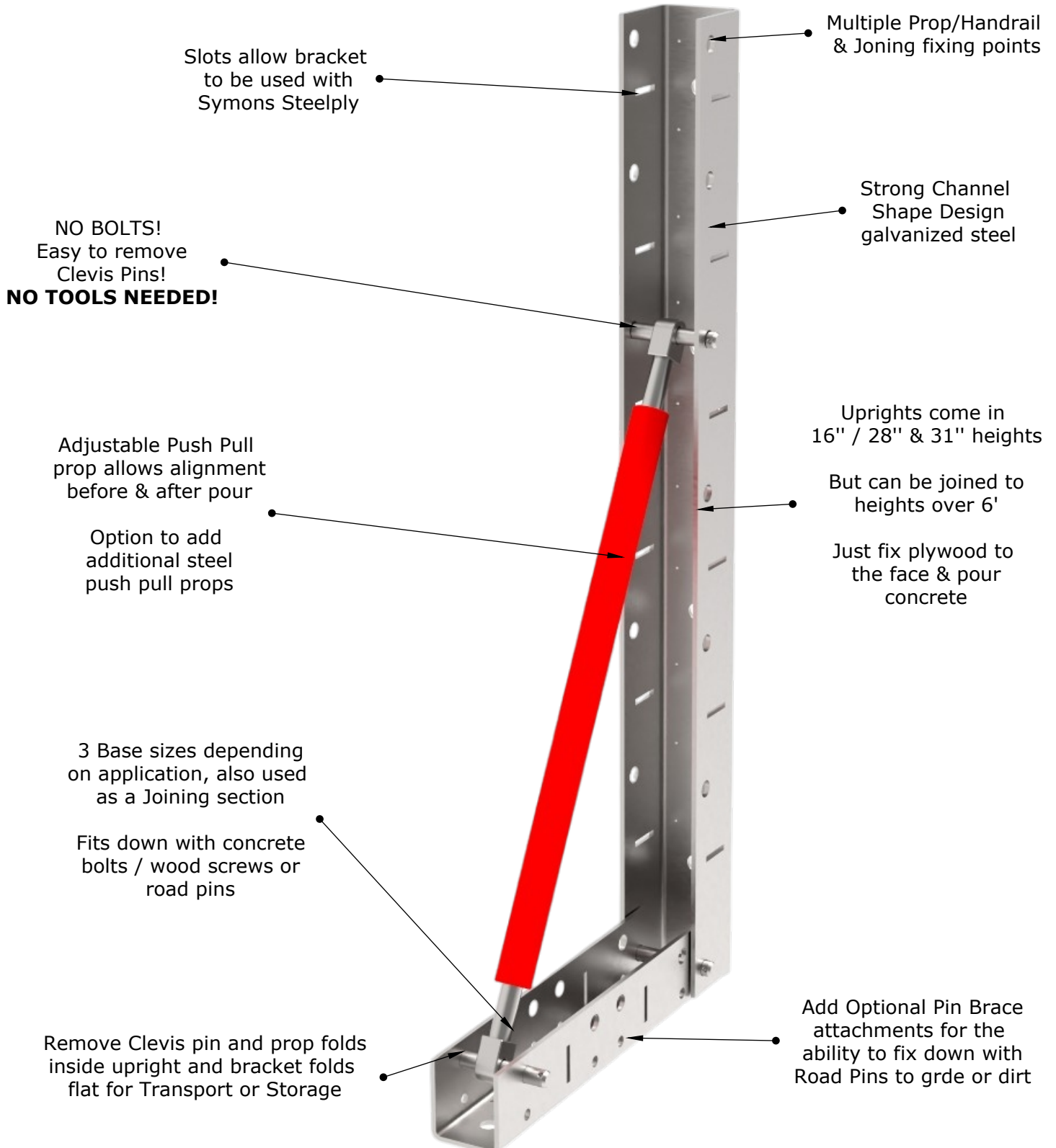
# Formwork & Road Form Sales

t: 307 441 5202

e: [sales@super-form.com](mailto:sales@super-form.com)

1309 Coffeen Avenue STE 16858, Sheridan, Wyoming 82801

## The Super-Form™ Bracket system



■ SAFER ■ FASTER ■ SUSTAINABLE ■

[www.super-form.com](http://www.super-form.com)

Copyright Superior Forming Solutions LLC, Super-Form™ is a Registered Trade Mark & all products are Patent Pending, any infringement will be prosecuted.



# Formwork & Road Form Sales

t: 307 441 5202 e: [sales@super-form.com](mailto:sales@super-form.com)

1309 Coffeen Avenue STE 16858, Sheridan, Wyoming 82801

## The Super-Form<sup>TM</sup> Bracket system

### MAIN FEATURES

THE STRONGEST, FASTEST & MOST FLEXIBLE FORMING SYSTEM ON THE MARKET

FASTER, STRONGER AND LESS EXPENSIVE THAN RIVAL PRODUCTS

NO BOLTS, SIMPLE CLEVIS PINS WITH CLIPS, SO NO TOOLS NEEDED  
FOLD FLAT FOR STORAGE & TRANSPORT

ADJUSTABLE PUSH PULL PROP ALLOWS PRE & OUR ADJUSTMENT

COMES IN 3 HANDY BRACKET SIZES 16" / 28" & 31"  
CAN BE JOINED TO MAKE 9 HEIGHTS UP TO 6' 5" HIGH

POUR STRAIGHT OR RADIUS SLABS, BASES, WALLS AND SHEET PILE CAPPING BEAMS

WORKS AS A FORMWORK SYSTEM ON ITS OWN AT 19" to 24" ON CENTRE  
FIX DOWN PLUMB UP, ADD PLY AND POUR CONCRETE

FASTER, SAVES TIME AND MONEY OVER LUMBER FORMS, NO FORMS TO MAKE!

BETTER FINISH THAN A PANEL SYSTEM, LIGHTER AND MORE FLEXIBLE

ALSO WORKS AS A FILLER PANEL AND ADJUSTABLE PROP FOR SYMONS STEEL PLY  
OR LUMBER FORMS AT UP TO 5' TO 6' ON CENTRE

STRONG THICK GALVANISED CHANNEL DESIGN WITH ABILITY TO JOIN UPRIGHT MEMBERS & FIX PLY  
TO FACE, ALSO HAS THE ABILITY TO ADD DYWIDAG TIE BARS FOR BEAMS AND WALL POURS

EASILY ATTACH HANDRAILS OR EVEN COMBISAFE PANELS ON SLAB EDGE POURS

3 BASES SIZES ALLOW YOU TO FIT IN THE TIGHTEST OF SPACES OR EVEN DETACH THE BASE OR ADD  
ADDITIONAL BASES TO TAKE ADDITIONAL PROPS FOR SINGLE SIDED POURS

BASES HAVE HOLES FOR FITTING DOWN WITH CONCRETE BOLTS / WOOD SCREWS OR WITH ROAD  
PINS ADD ADDITIONAL ROAD PIN BRACES FOR USING ON SOFT GROUND

CUTS CARBON USE BY UP TO 80%

CUTS WASTAGE AND LUMBER USE

COMPATIBLE WITH RECYCLED AND PLASTIC PLYWOOD ALTERNATIVES

**WE WON'T BE BEATEN ON PRICE AND WILL  
BEAT ANY GENUINE LIKE FOR LIKE QUOTE**

■ SAFER ■ FASTER ■ SUSTAINABLE ■

**[www.super-form.com](http://www.super-form.com)**

Copyright Superior Forming Solutions LLC, Super-Form TM is a Registered Trade Mark & all products are Patent Pending, any infringement will be prosecuted.



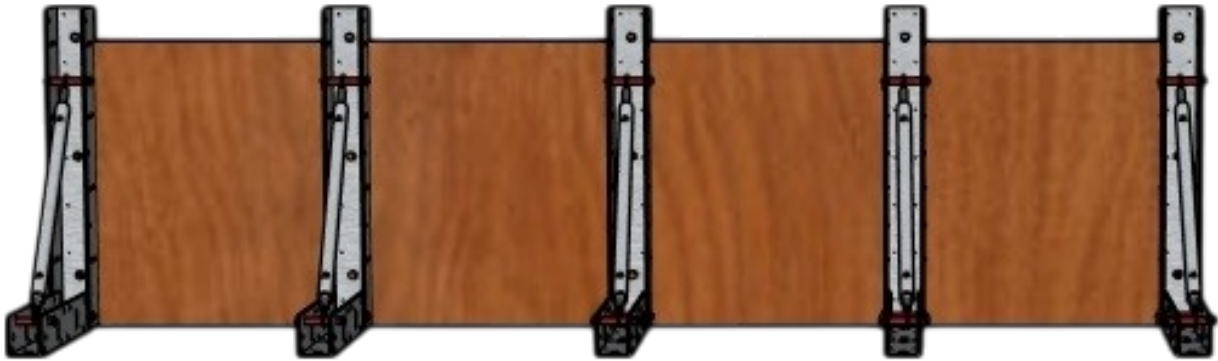
# Formwork & Road Form Sales

t: 307 441 5202 e: [sales@super-form.com](mailto:sales@super-form.com)

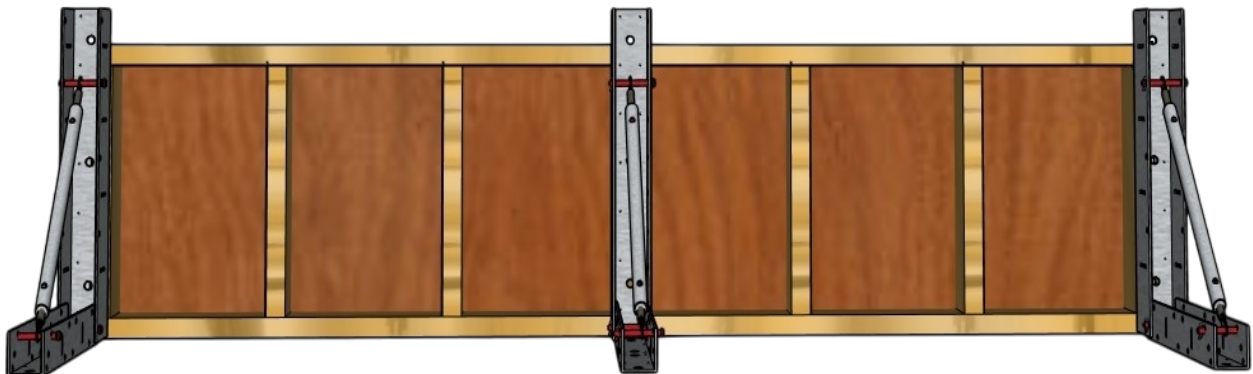
1309 Coffeen Avenue STE 16858, Sheridan, Wyoming 82801

## The Super-Form™ Bracket system 3 Uses

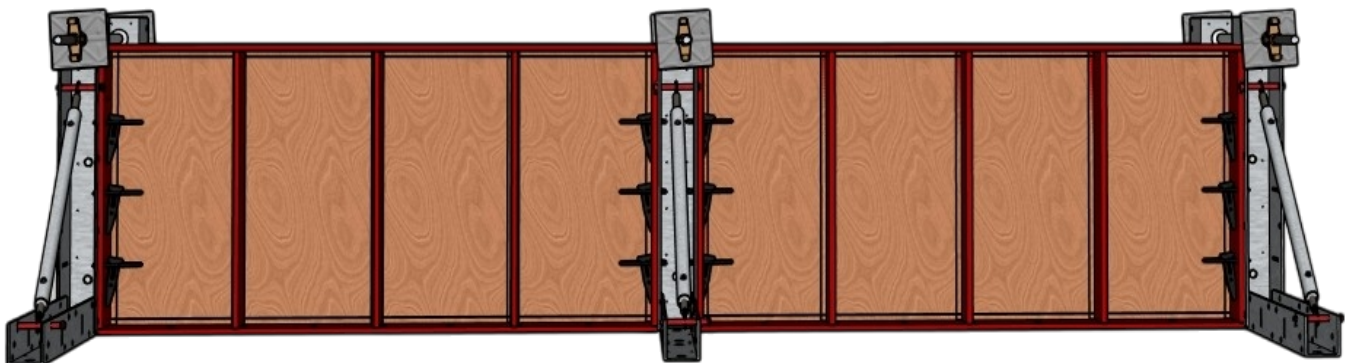
Shown used on its own as a forming system, just fix down to ground, concrete or plywood decks at 19" to 24" on centre, plumb up, add plywood face and pour concrete, straight or radius, slabs or walls 1' to over 6' high



Shown used @ 4' on centre as a prop on existing lumber forms, brackets have screw fixing holes to fix to the forms



Shown used at 5' on centre as a filler panel & prop on Symons Steelply 2' x 5' panel, brackets have pin & wedge slots that match the steelply, you can use a tie bar over the top of a pour on double sided, Bracket also eliminates the need for snap ties completely



■ SAFER ■ FASTER ■ SUSTAINABLE ■

[www.super-form.com](http://www.super-form.com)

Copyright Superior Forming Solutions LLC, Super-Form™ is a Registered Trade Mark & all products are Patent Pending, any infringement will be prosecuted.



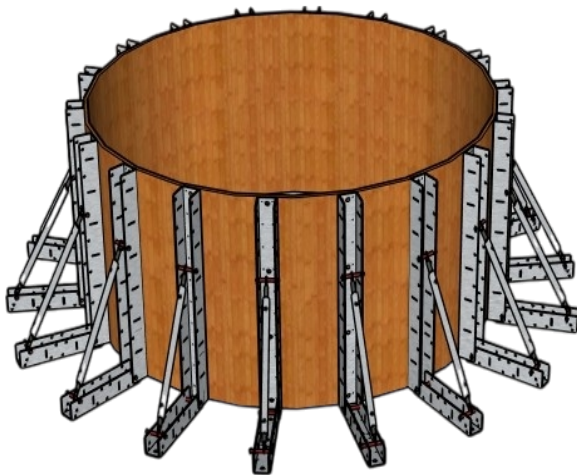
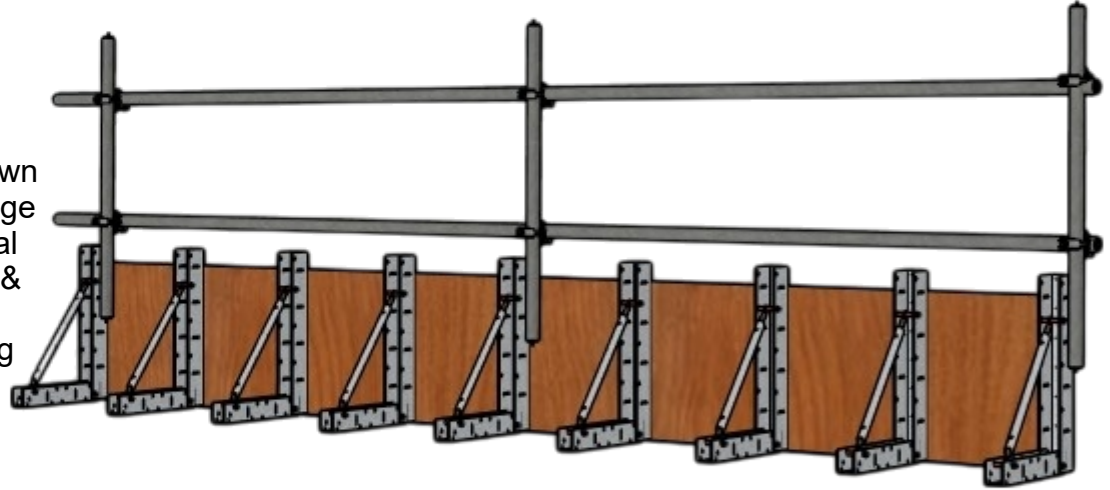
# Formwork & Road Form Sales

t: 307 441 5202 e: [sales@super-form.com](mailto:sales@super-form.com)

1309 Coffeen Avenue STE 16858, Sheridan, Wyoming 82801

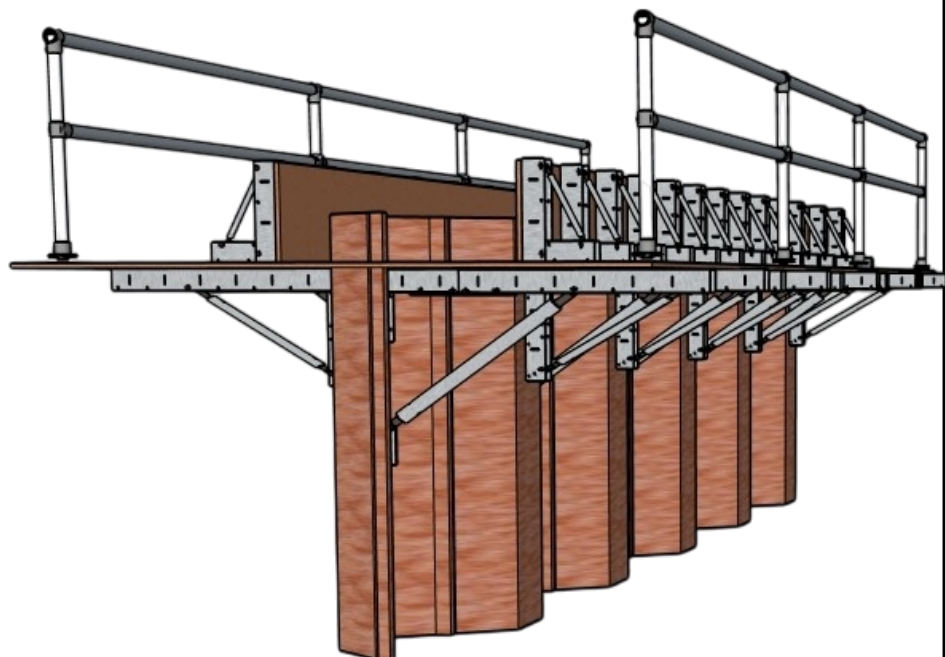
## The Super-Form™ Bracket system In Use

Super-Form™ Bracket shown used on its own as a slab edge forming system with optional handrail which can be tube & fitting, 2 x 4 or Combisafe, can also be gang formed



Radius or irregular shapes are quick & easy to form

Sheet pile capping beams are quick and easy, the bracket is used as soffit and slab edge form and can have handrails fitted for safety



■ SAFER ■ FASTER ■ SUSTAINABLE ■

[www.super-form.com](http://www.super-form.com)

Copyright Superior Forming Solutions LLC, Super-Form™ is a Registered Trade Mark & all products are Patent Pending, any infringement will be prosecuted.





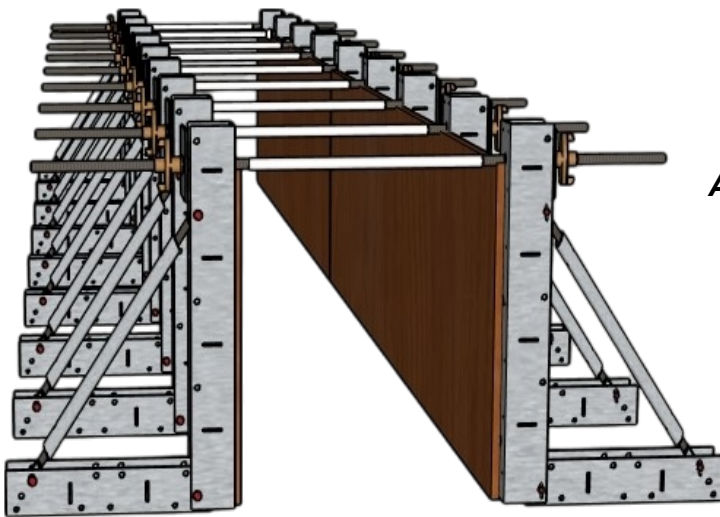
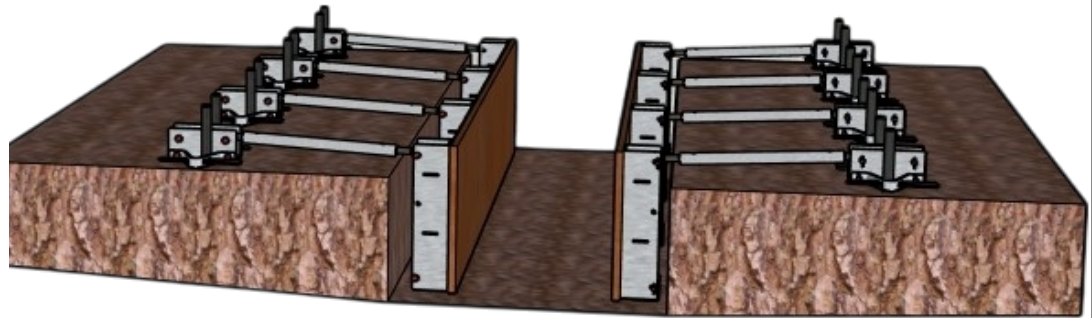
# Formwork & Road Form Sales

t: 307 441 5202 e: [sales@super-form.com](mailto:sales@super-form.com)

1309 Coffeen Avenue STE 16858, Sheridan, Wyoming 82801

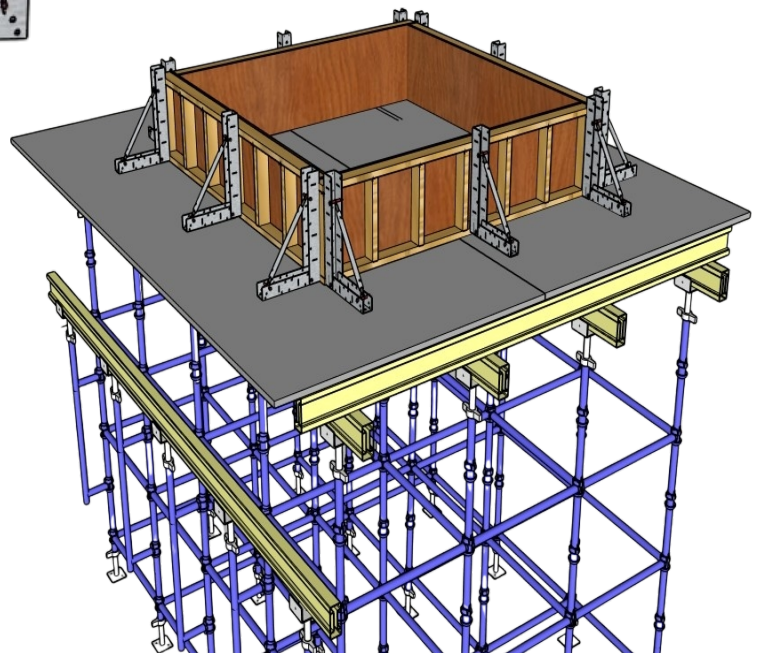
## The Super-Form™ Bracket system In Use

***Tight spaces, NO PROBLEM, use the Small Base and you can use another medium base detached for propping, ideal in tight trenches (Pin Braces attached)***



***Add tie bars over the top of pours if needed (not needed up to 4') , they can also be fitted in the pours for wall pours and remove the need for snap ties and give a much better finish***

***Can be fitted to all lumber decking / shoring systems using wood screws, with ability to add a handrail for safety***



■ SAFER ■ FASTER ■ SUSTAINABLE ■

[www.super-form.com](http://www.super-form.com)

Copyright Superior Forming Solutions LLC, Super-Form™ is a Registered Trade Mark & all products are Patent Pending, any infringement will be prosecuted.



# Formwork & Road Form Sales

t: 307 441 5202 e: [sales@super-form.com](mailto:sales@super-form.com)

1309 Coffeen Avenue STE 16858, Sheridan, Wyoming 82801

## The Super-Form™ Bracket system

Delivery Stillage loaded

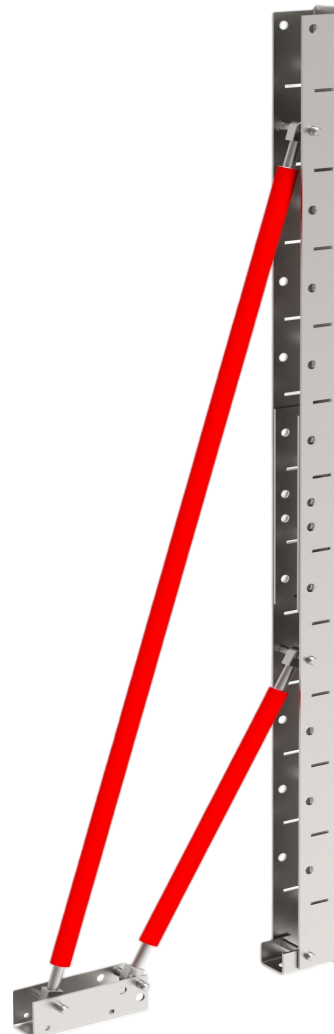


Large Bracket (3' 3")  
folded flat for transport & Storage



Large (3' 3") with OPTIONAL  
Pin Brace attachments that allow holding down  
with road form pins, option to attach  
2 or 4 pin brace attachments (4 shown)

Large upright joined with a large upright to give  
a 6' 5" height, small base used and detached  
medium base to hold 2 push pulls, ideal for  
walls and single sided pours



■ SAFER ■ FASTER ■ SUSTAINABLE ■

[www.super-form.com](http://www.super-form.com)

Copyright Superior Forming Solutions LLC Super-Form TM is a Registered Trade Mark & all products are Patent Pending, any infringement will be prosecuted.



## Formwork & Road Form Sales

t: 307 441 5202 e: [sales@super-form.com](mailto:sales@super-form.com)

1309 Coffeen Avenue STE 16858, Sheridan, Wyoming 82801

### The Super-Form™ Bracket system Uprights

***Just 3 upright sizes:***

***16" (S) / 28" (M) / 31" (L)***

***Can be joined to give 9 heights:***

***15.8"***

***27.6"***

***30.5"***

***39.4"***

***42.4"***

***42.8"***

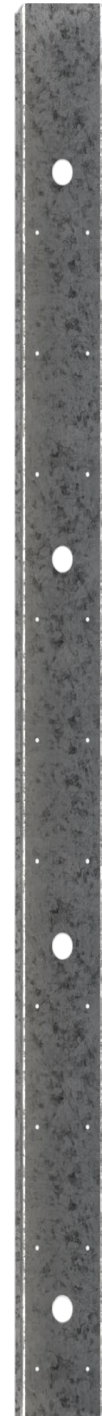
***54.2"***

***54.6"***

***66"***

***66.5"***

***77.8"***



***Small Upright (S)***

***Medium Upright (M)***

***Large Upright (L)***

■ **SAFER** ■ **FASTER** ■ **SUSTAINABLE** ■

**[www.super-form.com](http://www.super-form.com)**

Copyright Superior Forming Solutions LLC, Super-Form TM is a Registered Trade Mark & all products are Patent Pending, any infringement will be prosecuted.



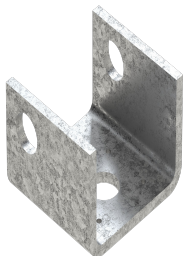


## Formwork & Road Form Sales

t: 307 441 5202 e: [sales@super-form.com](mailto:sales@super-form.com)

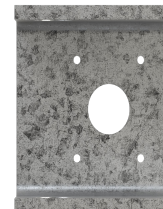
1309 Coffeen Avenue STE 16858, Sheridan, Wyoming 82801

### The Super-Form™ Bracket system Bases



*Small base used for tight spaces and for when system is used for walls, also used as a detached base to hold additional push pull props*

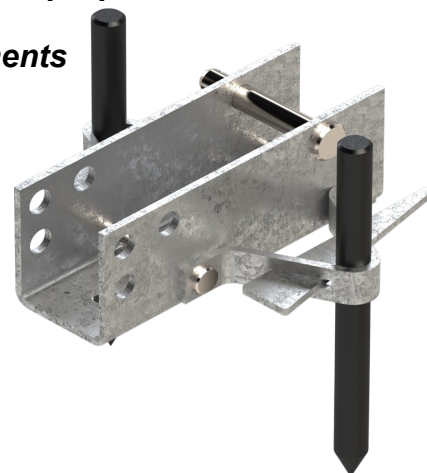
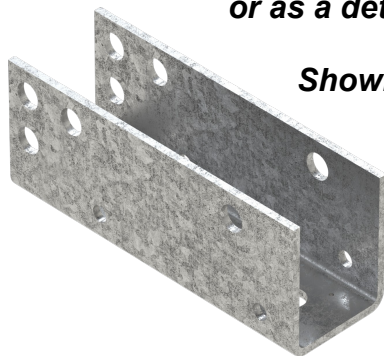
*All bases have wood screw holes and Concrete Bolt / Road Pin fixing holes*



*Medium base (10.6")*

*Used with Small & Medium uprights  
or as a detached base to hold up to 2 additional push pull props*

*Shown on right with OPTIONAL Pin Brace attachments*

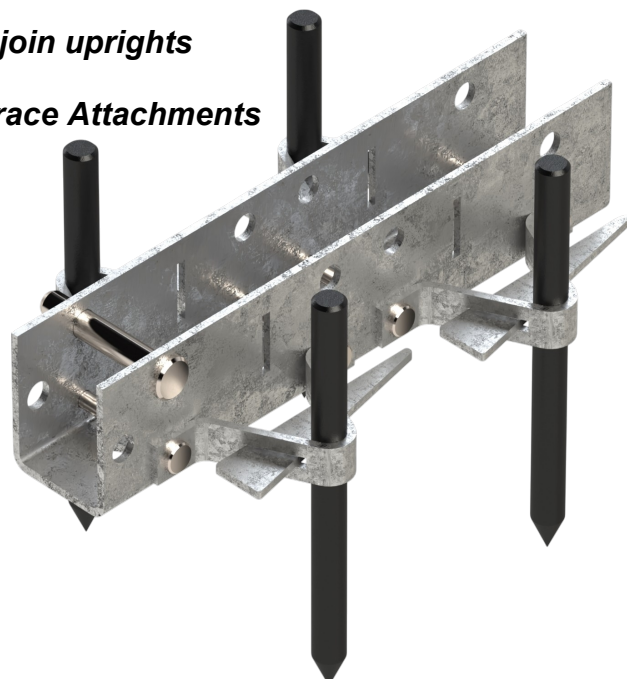
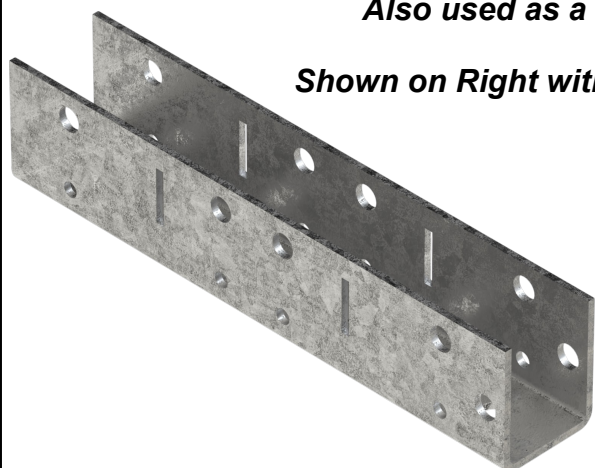


*Large base ( 15.8")*

*Used with Medium & Large uprights  
or as a detached base to hold additional push pull props*

*Also used as a Joining Section to join uprights*

*Shown on Right with OPTIONAL Pin Brace Attachments*



■ SAFER ■ FASTER ■ SUSTAINABLE ■

[www.super-form.com](http://www.super-form.com)

Copyright Superior Forming Solutions LLC, Super-Form™ is a Registered Trade Mark & all products are Patent Pending, any infringement will be prosecuted.





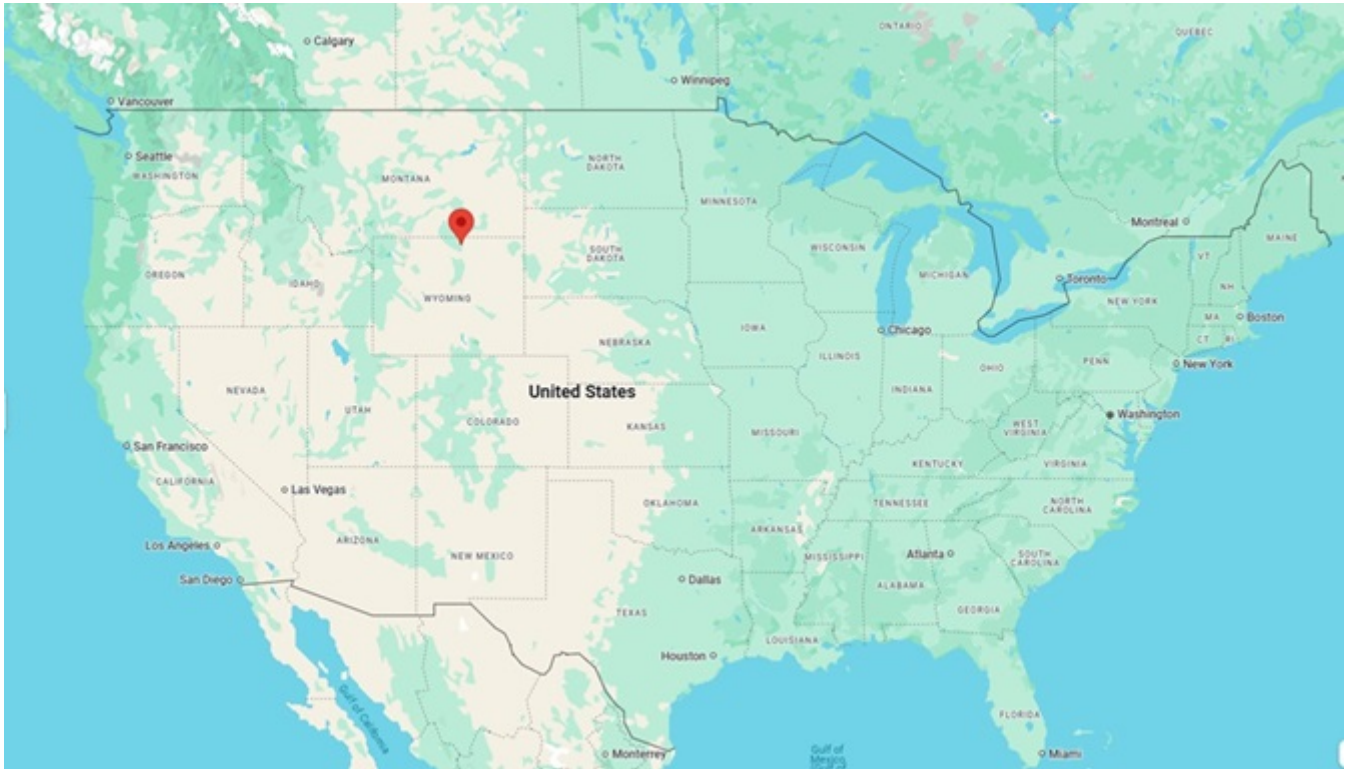
# Formwork & Road Form Sales

t: 307 441 5202 e: [sales@super-form.com](mailto:sales@super-form.com)

1309 Coffeen Avenue STE 16858, Sheridan, Wyoming 82801

## The Super-Form™ Bracket system Bases

*Local Dealers wanted please contact us:*



## Main Distributor: Superior Forming Solutions LLC

1309 Coffeen Avenue STE 16858, Sheridan, Wyoming 82801

■ SAFER ■ FASTER ■ SUSTAINABLE ■

[www.super-form.com](http://www.super-form.com)

Copyright Superior Forming Solutions LLC, Super-Form™ is a Registered Trade Mark & all products are Patent Pending, any infringement will be prosecuted.