



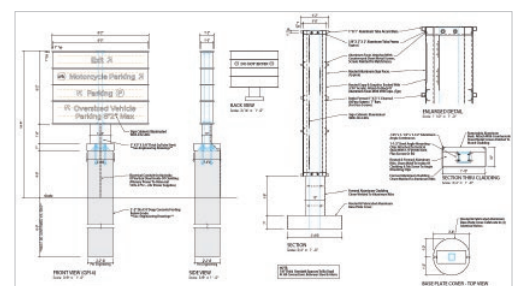
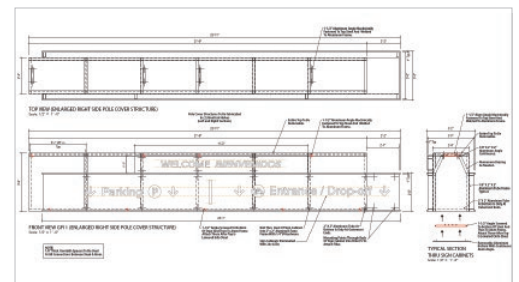
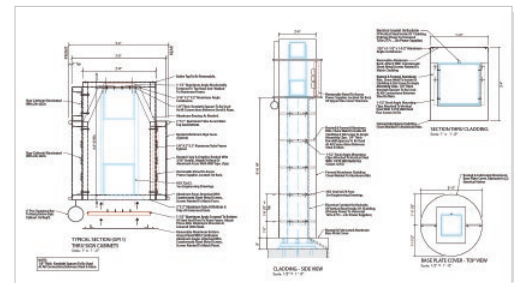
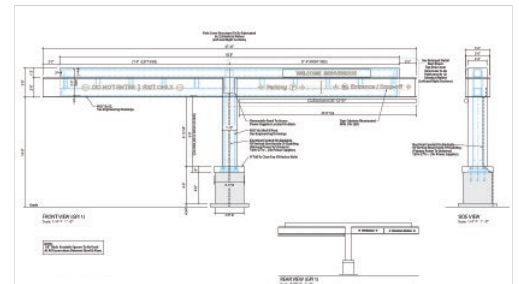
# CLARK TECHNICAL DESIGN

- Technical documentation
- Permit drawings
- Detailing for fabrication & installation
- CNC files for production
- 3D technical animation

Technical design for the branded environment • Over 25 years experience in the sign industry

Technical drawings & documentation for Sign Art Studio for UW Health, a medical center in Madison, WI. We worked with the production team at SAS along with their engineer to create drawings for fabrication and installation for parking garage signs. A 3D model and animation was also created.

- 10 page fabrication drawing
- CNC files for all graphics
- 3D Technical Animation
- 4 sign types
- 220 ft of LEDs
- 750 ft of aluminum tube
- Over 10,000 lbs of steel
- 28 anchor bolts
- Multiple night installation





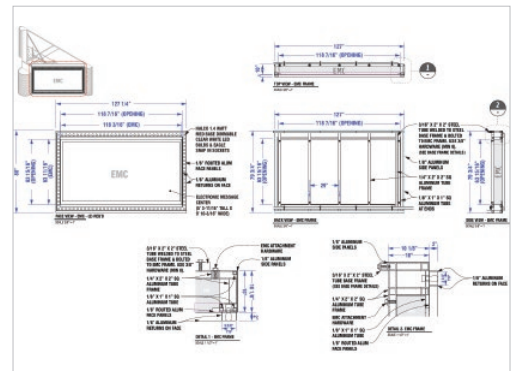
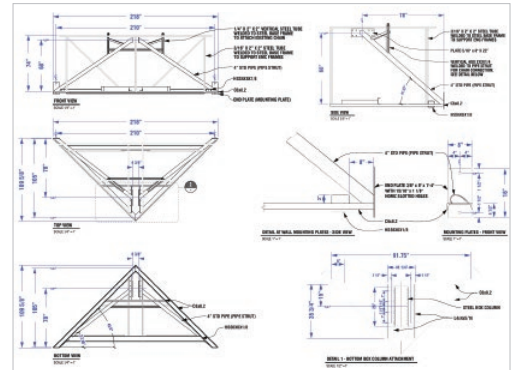
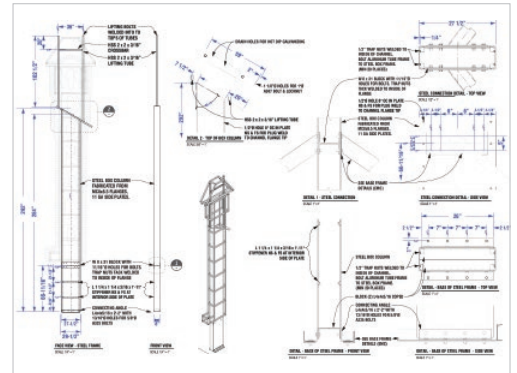
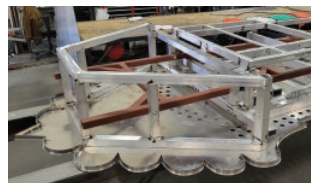
# CLARK TECHNICAL DESIGN

- Technical documentation
- Permit drawings
- Detailing for fabrication & installation
- CNC files for production
- 3D technical animation

Technical design for the branded environment • Over 25 years experience in the sign industry

Technical drawings & documentation for Eugene Sign & Awning for McDonald Theatre, a theatre and music venue in Eugene, OR. We worked with the production team at ES&A and their contracted engineers to create drawings for permitting, fabrication and installation for a large blade sign and an EMC cabinet. The entire project was modeled in 3D.

- 5 page permit drawing
- 13 page fabrication drawing
- CNC files for 3D steel pipe & 2D aluminum cutting
- 3D model of entire assembly
- 190 ft of neon
- 490 dimmable light bulbs
- 700 ft of aluminum tube
- Over 3,500 lbs of steel
- 2 electronic message centers
- In progress. Not yet installed







# CLARK TECHNICAL DESIGN

- Technical documentation
- Permit drawings
- Detailing for fabrication & installation
- CNC files for production
- 3D technical animation

Technical design for the branded environment • Over 25 years experience in the sign industry

Technical drawings & documentation for South Bowl, a multi-functional event space & bowling venue in Philadelphia, PA. We worked with their design studio to make their ideas come to life and created drawings for permitting, fabrication and installation of their channel letter sign.

- 4 page permit drawing
- 5 page fabrication drawing
- 2 page installation drawing
- 300 ft of leds
- 10 power supplies
- 400 lbs of aluminum
- 80 mounting points
- Installed 30 feet above grade
- Visible from interstate 95

