



Renegades Racing

Super Sprint Class Information

January 2023

Renegades Super Sprints

www.umsprints.com



Content Outline

- Purpose Defined
- Car Concept / Design
- Performance
- Rules
- Class Schedule / Plans
- Components and Car Build
- Body Style Feedback
- Contact

Renegades Super Sprints

www.umsprints.com



Purpose and Objectives

The Renegades Super Sprint class is created to provide a unique opportunity for people who want to start or return to full size open-wheel car racing.

The Super Sprint class is intended for the following driver profiles:

- Young racers, as young as 13 yrs old, who have racing experience.
- Adults who have little or no racing experience.
- Adults who are returning to racing.
- Current full-size sprint or stock car racers looking for a cost effective, challenging and fun class of racing.

The Super Sprint class is not intended for highly competitive, accomplished race car drivers.

Renegades Super Sprints

www.umsprints.com

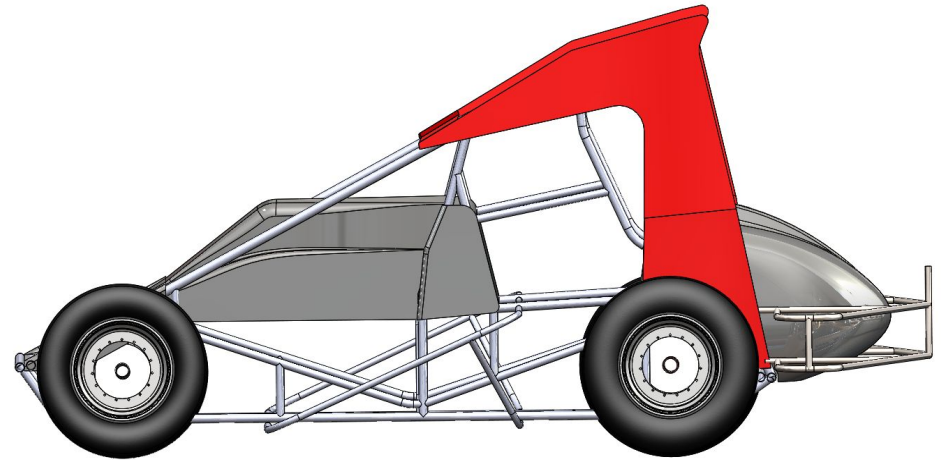
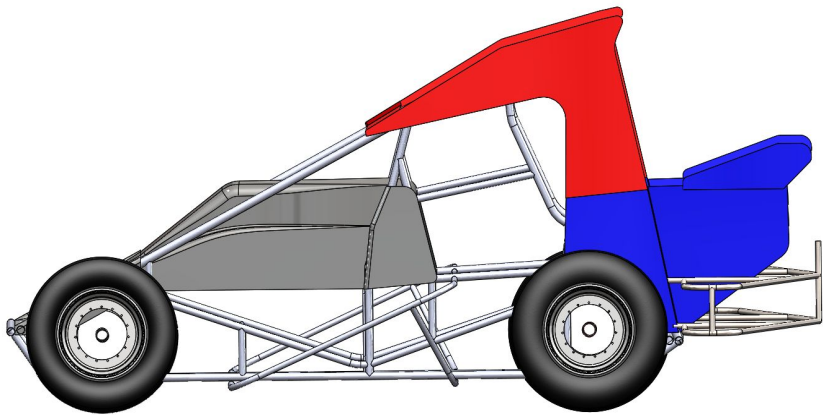
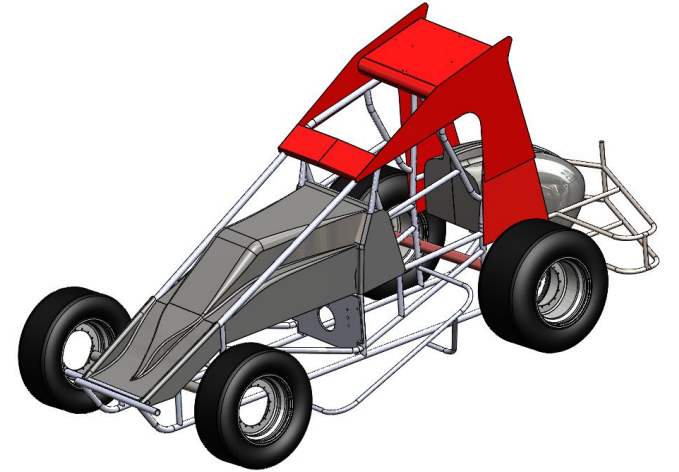
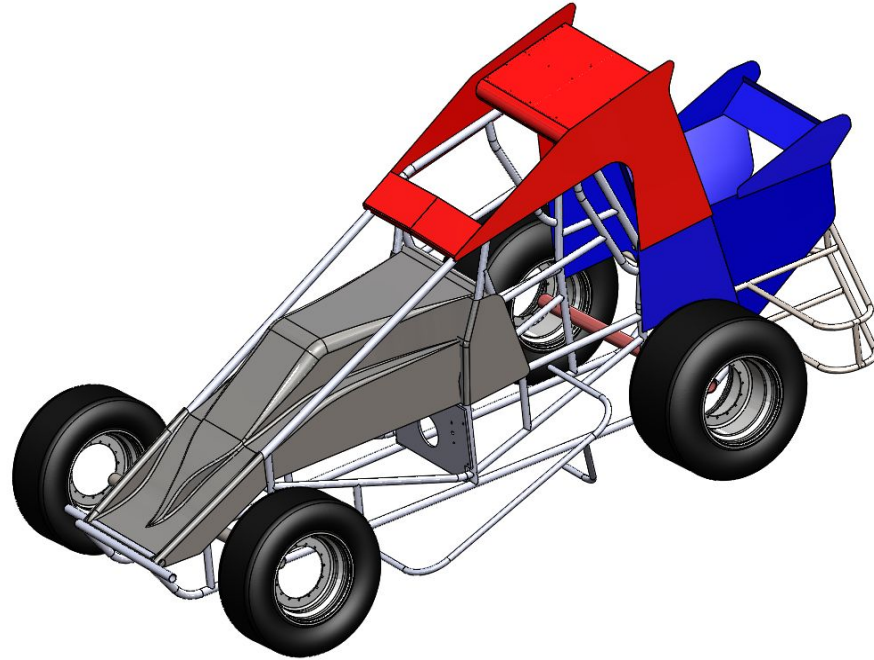


Car Concept / Design

Traditional Components

Required Super Sprint Body

Optional Rear Body



Renegades Super Sprints

www.umsprints.com



Performance

- 1" restrictor produces approximately 210 HP
- Track Test Results @ Ogilvie Raceway
 - 88 mph top speed
 - 25% reduction in acceleration rate
 - low 17 - 18 second lap times
 - Driver needs to manage throttle & grip
 - Non-wing set-up was close to good balance



Renegades Super Sprints

www.umsprints.com



Rules

All Traditional Sprint Car rules and regulations apply to the Renegades Super Sprint car class, with the following exceptions:

Participation age is extended to 14 years old. A 13 year old may be allowed to compete based on experience and readiness at the discretion of the series director. There is no maximum age.

Carburetor spacer: The UMSS Super Sprint carburetor spacer / restrictor plate (Part Number 1010039) is required equipment. Any additional carburetor spacer is allowed above or below the restrictor plate. No modifications to the restrictor plate are allowed. A UMSS go/no-go gauge and will be used to determine restrictor plate legality.

Tires:

- Left Rear Tire: Hoosier NLMT 2, NLMT 3, NLMT 4 or equivalent is required.
- Right Rear Tire: Hoosier NLMT 3, NLMT 4 or equivalent is required.

Rear Bumper: A tubular rear bumper with rear tire protection that meets the following specifications is **REQUIRED**. The purpose of the Super Sprint rear bumper is to prevent the consequences of rear tire to rear tire contact.

- Vertical center tube, minimum 8 inches tall. Rear most point must be greater than 33" and less than 40" behind the rear edge of the rear axle.
- Minimum 2 horizontal tubes and a minimum 8" height as measured at any external location between left most and right most points.
- On both the left and right ends, the outermost edge must be no more than 2" outside the tire sidewall, and must be no more than 4" inside the tire sidewall.
- The outermost, tire protection, section of the bumper must be connected to the bumper mounting tube in at least one place per side.. This return is intended to prevent bending into the tires.
- All tubes must terminate in a welded joint with another tube. No capped or detached tube ends.

Roll Cage Halo covering the driver's head is **REQUIRED**.

Nerf bars:

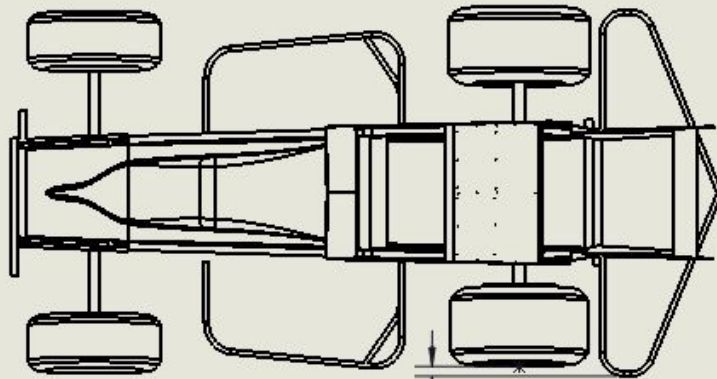
- Battle bars or long nerf bars are required with a chassis attachment point forward of the front motor mount are **REQUIRED**.

Body

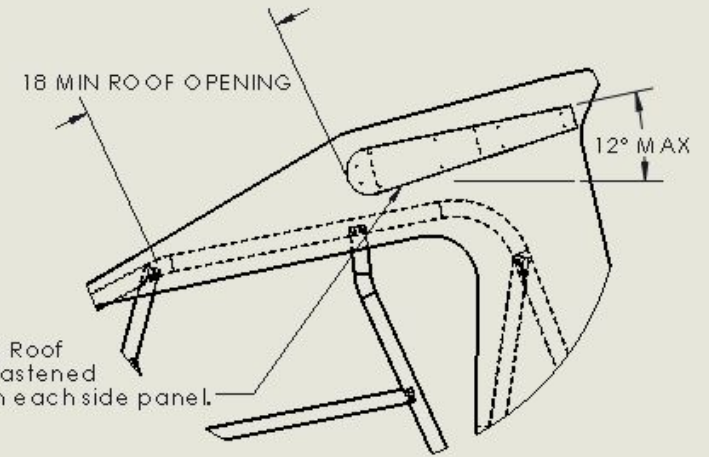
- The body must comply with the Renegades Super Sprint Body template dimensional requirements per Renegades Super Sprint body template diagram.
- An energy absorbing roof (Part Number 5010015), is required equipment. And the EA roof must be mounted according to the Renegades Super Sprint body template.
 - A minimum 18" opening must exist in front of the energy absorbing roof.
 - The energy absorbing roof must be mounted with a minimum of 8 5/32" rivets to each side panel.
 - The energy absorbing roof must be installed with a maximum 12 degree angle from top surface to ground, measured with driver, before or after an event.
- A rear quarter panel body with spoiler is
 - allowed and must comply with the dimensional requirements per Renegades Super Sprint body template diagram.
 - required when a rectangular tank is utilized.
- If a deck lid is used, it must remain below the side panels at all locations.
- No body, except the spoiler sides, are allowed in an area greater than 26" above the rear axle and greater than 12" behind the rear axle.



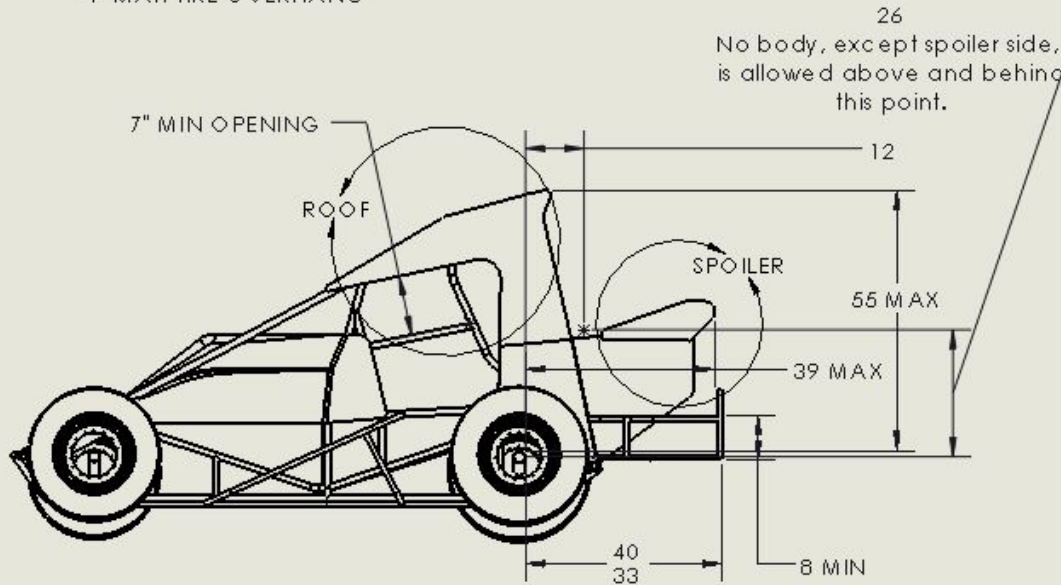
Body Diagram



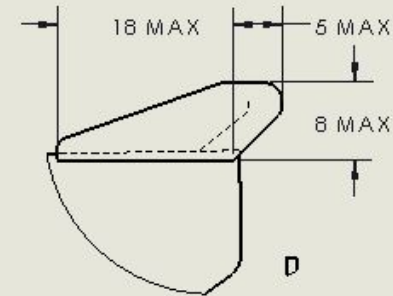
2 MAX BUMPER OVERHANGE
4" MAX TIRE OVERHANG



DETAIL ROOF
SCALE 2 : 25



26
No body, except spoiler side,
is allowed above and behind
this point.



DETAIL SPOILER
SCALE 1 : 15



Class Schedule / Plans

The original strategic plan for the Super Sprint class/series to start, and continue the program into the future will be as follows;

- 1) Get at least one car built. The Renegades Racing Brand has completed a car.
- 2) Starting July 15, or maybe earlier depending on availability of parts, integrate the Super Sprint class into the Traditional Sprint Car class to allow the program to gain interest and time to grow. The plan, as of right now, is to have the Super Sprints start heats and features at the rear of Traditional heats and features. They will have a "race within a race" in their heat(s) that will line up their starting position for the feature. Another option for their heat is to have their own. This will be worked out with each individual track. Their feature will also be a "race within a race" during the Traditional feature. This will be a fluid situation based on Traditional and Super Sprint car counts.
- 3) The long term, strategic plan for the Super Sprint is to develop a series the same as the other two Renegades Racing Brand platforms with their own program either stand alone or in conjunction with the other two platforms. Time frame for this is unknown, but if history is any indication, it will be at least a three year process.
- 4) Both the Northern Renegades and the UMSS will start the program in 2023.

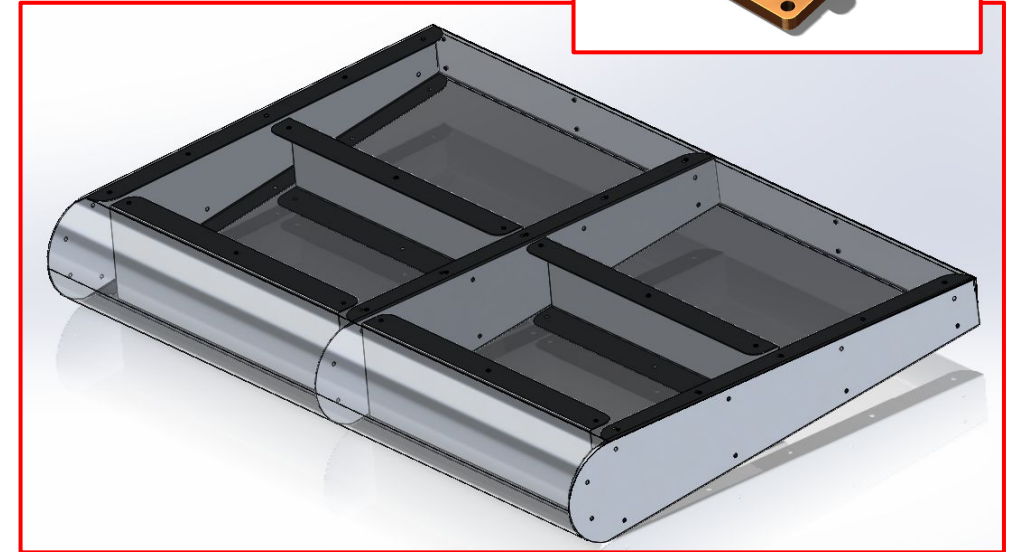
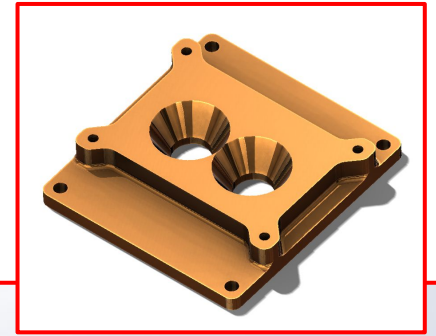
Renegades Super Sprints

www.umsprints.com



Components and Car Build

- **Restrictor plate (Required)** Part Number 1010039.
 - Racers “check out” a serialized restrictor plate with a \$150 deposit.
 - Receive your deposit refund when your unmodified restrictor plate is returned.
- **Body**
 - Energy Absorbing Roof **(Required)** available from Renegades Series.
 - Racers may fabricate their own bodies.
 - Pre-fabricated panels will be available from P Won Performance.
- **Bumper**
 - Racers may fabricate their own bumpers.
 - Complete bumpers fitting Triple X and Maxim Chassis will be available from P Won Performance.



Renegades Super Sprints

www.umsprints.com



Components and Car Build

• Wheels

- RR: 15X12 & 15x13
- LR: 15x13 & 15x14
- Option 1: Purchase wheels. P Won has Keizer wheels created specifically for the Super Sprint Class
- Option 2: Assemble wheels using two good halves from used Sprint Car wheels. Purchase new halves if needed. P Won has secured wheel halves from Keizer.
- Option 3: use late model wheels and a 42 spline / Wide 5 hub.



• Tires

- Acquire used late model tires.
- Buy new LMNT tires.

- **Gears:** Expect to use similar gear ratios as the traditional sprint class. Smaller rear tires provide an increase in final ratio.

• Set-up:

- Non-wing sprint set-up is a good start.
- Add 2-4 turns into rear torsion bars to lift ride height, or use wing blocks.



Renegades Super Sprints

www.umsprints.com



Contact

Ron Bernhagen
ron@umsprints.com
612-363-5302

Caley Emerson
caley15e@gmail.com
218-398-7807

Mark Chevalier
performance@p-won.com
612-669-7143

Renegades Super Sprints

www.umsprints.com