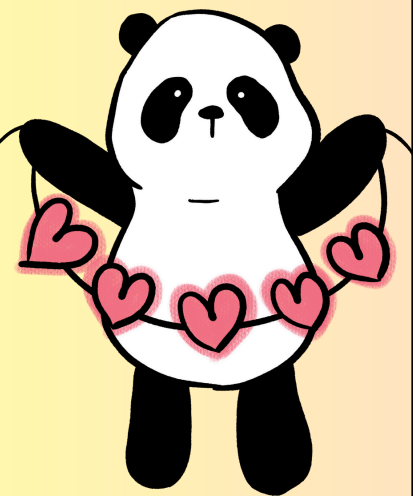


**February
2025**

A Note from Rev. Katrina



**First
Presbyterian
Church of Alma**



Unimaginable Possibilities was the theme of Montreat College Conference this year. The trip had more unimaginable possibilities than we truly wanted, perhaps.

Knowing that a huge ice storm was approaching Kentucky and Ohio, I made the decision to leave a day early. I wanted to avoid the bad weather. I had been stuck in bad snow storms before in a small vehicle, and I didn't want to chance it in a larger van with students.

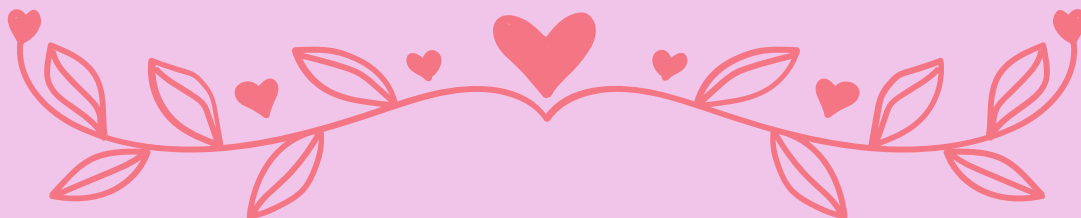
We begrudgingly packed up our things into Big Scotty (what I named the van) and headed out. GPS took us a slightly different route on the way, weaving us through the mountains of Virginia and West Virginia. We unexpectedly left early and then took a new route.

Encountering this new route meant none of us were familiar with it so we were surprised to see a toll road. We hadn't planned for this new route. Magically, or miraculously, in the time of cash free society, we managed to scrape together the \$4.50 for the toll.

Miles down the road, another toll appeared. How much money does West Virginia need? Like the story of loaves and fishes, another \$4.50 in change appeared in my hand. Then we hit the third toll. We ran out of loaves and fishes. But we made it home safely.

We managed through the literal and figurative bumps in the road. God was present with us through the twists and turns. And God promises to be with you, even when we run out of loaves and fishes and don't know what the road will bring.

The future of First Presbyterian might take an unimaginable possibility. And the beauty is that God works through the unimaginable - a baby in a basket, a burning bush, a baby born to a virgin, a cross, and resurrection.



Please join us for a special Valentine's Day coffee hour on February 9th hosted by Deacons for Fellowship and Congregational Life!



Annerose White is celebrating her 85th birthday on February 15th! Please consider sending her a card! :)

Office Hours:

Rev. Katrina has office hours Monday and Thursday 9-11. Tuesdays and Wednesdays are by appointment.

Matthew's office hours are Monday -Thursday 8:30-1:30.



- 2-6 Jean Kimball**
- 2-9 Ron Turner**
- 2-12 Catharine Horn**
- 2-15 Sue Deel**
- 2-15 Annerose White**
- 2-16 Carol Rosan**
- 2-17 Renu Maslovich**



2-15 Brian & Deb Rockafellow





February



	MONDAY	TUESDAY	WEDNESDAY	THURSDAY	FRIDAY	SATURDAY
						1
2 Congregational Meeting	3 9:30-12pm Linus Ladies 6:30pm Pine River Arts	4 1:30pm Food Pantry 3pm Sabbath Group	5 6:30pm Choir Practice	6 11am Outreach 5:30 Community Café	7	8
9 Valentine's Lunch	10 9:30-12pm Linus Ladies	11 1:30pm Food Pantry 3pm Sabbath Group 5pm Spiritual Growth 5:30pm Child Advocacy	12 6:30pm Choir Practice	13 2pm Personnel 5:30 Community Café <i>BE MY VALENTINE</i>	14	15
16	17 9:30-12pm Linus Ladies	18 1:30pm Food Pantry 12-5:45pm Blood Drive 3pm Sabbath Group	19 6:30pm Choir Practice	20 5:30 Community Café	21	22
23	24 9:30-12pm Linus Ladies	25 1:30pm Food Pantry 3pm Sabbath Group	26 6:30pm Choir Practice	27 5:30 Community Café	28	