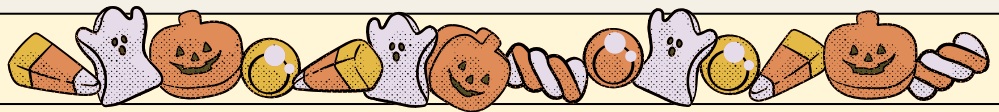


October 2024



**First  
Presbyterian  
Church of Alma**



## A Note from Rev. Katrina



**One of my favorite fun facts about the Reformation is that coffee was introduced in Europe in 1515. Two years later, Martin Luther began the Reformation. Coincidence or cause and effect? You decide!**

**The Presbyterian Church I grew up in did not celebrate Reformation Sunday (always on the last Sunday in October), but the first church I served in seminary celebrated it every year. This isn't a celebration every church recognizes. Our Kirkin' o' the Tartan service perhaps shares some of this as we remember our Scottish heritage, which also ties into our Reformed heritage. My Presbyterian Heritage professor in seminary was adamant that we remember the exact translation of "Ecclesia reformata, semper reformanda." Many translate it as "the church reformed and always reforming," but the accurate translation is "the church reformed and always being reformed." We might look at this and think, "what's the difference?" The slight difference is that we are not the ones doing the reforming - God is the one reforming us. How do we know if God is reforming us? We don't always know, especially in the midst of a reformation. I'm sure Martin Luther didn't think, "We're going to completely change the landscape of Christianity!" He merely was speaking up for change in the Catholic church - he wasn't even trying to start a new denomination.**

**So, in the midst of it, we may not think we're being reformed. But I do think reformation is difficult. It's an uncomfortable time in which we know things aren't "the same as they always were" but we don't know where we're going, and that's ok. One of my favorite prayers is by Thomas Merton - it has helped me through many times of discernment. I'm including it on the next page of the newsletter. May God surround us in times of reformation.**

# Thomas Merton Prayer

**“My Lord God, I have no idea where I am going. I do not see the road ahead of me. I cannot know for certain where it will end. Nor do I really know myself, and the fact that I think that I am following your will does not mean that I am actually doing so. But I believe that the desire to please you does in fact please you. And I hope I have that desire in all that I am doing. I hope that I will never do anything apart from that desire. And I know that if I do this you will lead me by the right road, though I may know nothing about it. Therefore will I trust you always, though I may seem to be lost and in the shadow of death. I will not fear, for you are ever with me, and you will never leave me to face my perils alone.”**



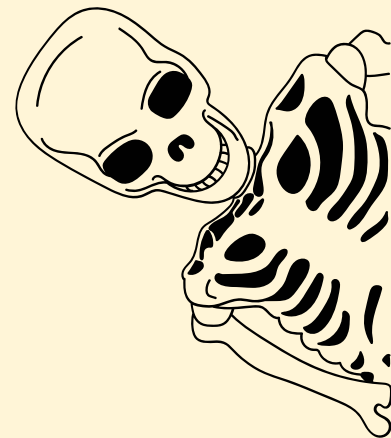
Happy

ANNIVERSARY

**Duane Barclay 10/01**  
**Katie Dixon 10/01**  
**Michael Selmon 10/01**  
**Jimm Lyon 10/03**  
**Tincy Goggin 10/08**  
**Hannah Selmon 10/08**

**Nancy Sheasley 10/08**  
**Jim Rowland 10/14**  
**Susan Beckett 10/19**  
**Sally Geuder 10/19**  
**Dwight Hillstrom 10/21**  
**T.J. Piccolo 10/26**  
**Charles Garringer 10/29**

**Bob & Barb Marble(73) 10/07**  
**Bill & Mary Hurley(42) 10/10**  
**Dave & Virginia Blandford(18) 10/12**





### Community Café sign up!!

Check your calendar and pick a Thursday to spend an hour at Community Café! Come by 5:15 and say “Hi” and “Thanks!” to our volunteers, then mingle with our guests. You are welcome to fill your plate and sit down to eat and chat with those at your table, OR grab a beverage pitcher and stroll between tables chatting and refilling glasses OR help dish up leftovers at the food table for guests to take home with them OR come up with a different way to be a church ambassador to this extraordinary outreach program. Come alone, with your spouse, or with your family...but come, and notify Sue Malone of your preferred date.

Here are the Thursdays in need of a personal visit.

- 9/12 Sue Malone
- 9/19 Joyce Elsea
- 9/26 Sue Deel
- 10/3 Marsha Turner
- 10/10 Darcy Hodges
- 10/17
- 10/24
- 10/31
- 11/7
- 11/14
- 11/21
- 12/5
- 12/12
- 12/19

  
  
 **Blessing of  
the Animals  
October 20th**



10/1/2024

Dear First Presbyterian Church of Alma Community;

The Spiritual Growth Team is excited to announce the launch of our 2025 Stewardship Campaign, themed "Embrace, Celebrate, Grow" inspired by the powerful parable given the common title of The Prodigal Son (Luke 15:11-32). This story of reconciliation, acceptance, and celebration mirrors our church mission and the efforts we make to strive to be a welcome and inclusive community for all.

As we reflect on the story, we see a narrative of generosity, unconditional love and forgiveness, radical hospitality and welcome, and this embodies some of the values we strive to uphold. This year, we invite you to consider how you can personally carry out these themes in your own life and within our church. We also ask you to envision how First Presbyterian Church is generous with its gifts and resources in our community. By embracing each other's unique stories, celebrating our varied backgrounds, and growing together in faith, we can build a stronger, vital, and vibrant community. Some of the themes you will see through our study of this story will include:

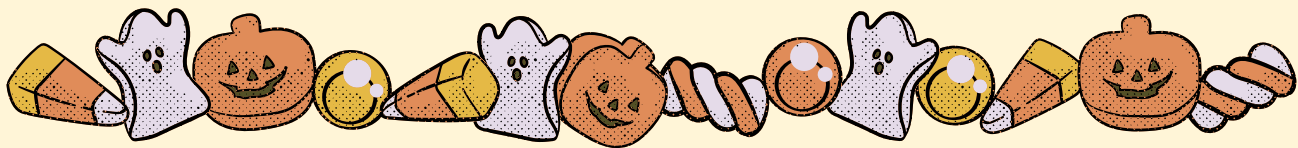
- Embrace-Welcome all with open arms, ensuring everyone feels valued and accepted; be generous with our gifts and resources as a church and individually
- Celebrate- Recognize each other, acknowledge experiences and contributions of every member of our congregation, and our place in our community
- Grow- Invest in programs that foster spiritual growth of our congregation and beyond so that we can continue to expand the vitality of this congregation. Learn about reconciliation and belonging.

We will explore these themes through our worship and conversations among our groups and through our activities. In October, we will distribute pledge cards, and we ask that you prayerfully consider your financial contribution for the upcoming year. Your pledge will support First Presbyterian Church's efforts to plan for 2025. This assists with supporting efforts that reflect our commitment to our ministries, community, and people touched by our church. We are at a pivotal moment in our church's history, and with your support, we can continue to be a place of hope and acceptance. Together, let us embrace the future with faith and generosity, celebrating the gifts we bring to our shared journey.

Thank you for your continued dedication and love for our church and community. We look forward to walking this path of stewardship with you.

In Christ's Love




The First Presbyterian Church of Alma's Spiritual Growth Team



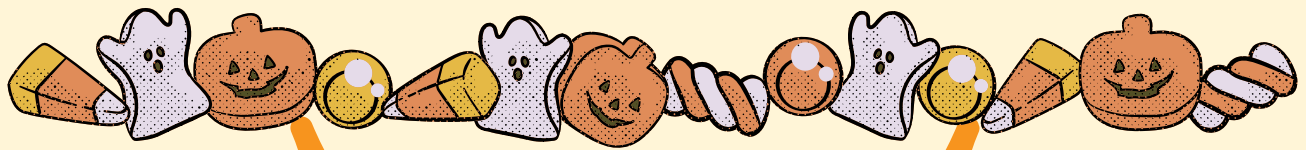
Mark  
YOUR  
Calendar



# OCTOBER

SUNDAY	MONDAY	TUESDAY	WEDNESDAY	THURSDAY	FRIDAY	SATURDAY
		1 1-3:30pm Food Pantry	2 6:30-7:30pm Choir Practice	3 5:30 Community Cafe	4	5
6 Worship w/ St. John's Rev. Katrina on vacation	7 9:30-12pm Linus Ladies	8 Rev. Katrina 1-3:30pm Food Pantry 5:30pm Child Advocacy	9 out of office 6:30-7:30pm Choir Practice	10 5:30 Community Cafe	11	12
13	14 9:30-12pm Linus Ladies 5pm Spiritual Growth	15 1-3:30pm Food Pantry  12-6pm Blood Drive	16 6:30-7:30pm Choir Practice	17 5:30 Community Cafe	18	19
20  10:30am Blessing of the Animals	21 9:30-12pm Linus Ladies	22 1-3:30pm Food Pantry	23 6:30-7:30pm Choir Practice	24 5:30 Community Cafe	25	26
27	28 9:30-12pm Linus Ladies 4:30 Outreach 6:30 Session	29 No Food Pantry 5th Week	30	31 		

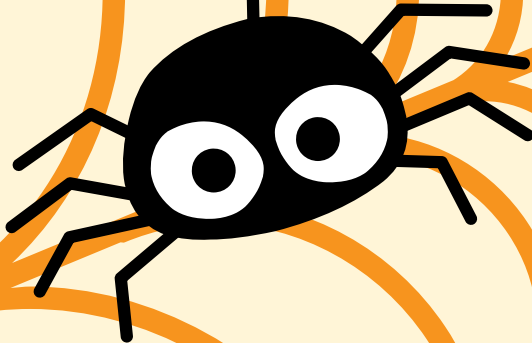
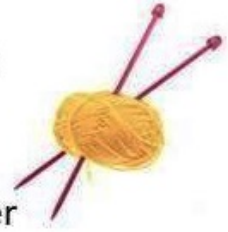




## Start saving those mittens and hats



We will, again, have a mitten tree along Superior Street in December for *Come Home to Alma for the Holidays!* Start setting aside mittens and hats for people of all ages so we can give them out during the festivities. We'll be collecting them in November



### Equipping Peacemakers in Congregations and Around the World.

A gift to the Peace & Global Witness Offering enables the church to promote the Peace of Christ by addressing systems of conflict and injustice across the world. Individual congregations are encouraged to utilize up to 25% of this Offering to connect with the global witness of Christ's peace. Mid councils retain an additional 25% for ministries of peace and reconciliation. The remaining 50% is used by the Presbyterian Mission Agency to advocate for peace and justice in cultures of violence, including our own, through collaborative projects of education and Christian witness.