

# Golf Inc.™

MAY/JUNE 2025



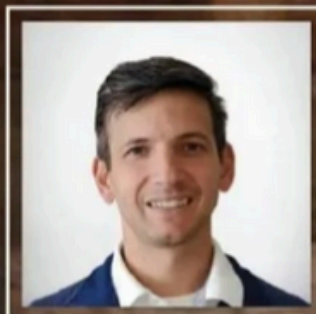
Cabot Citrus Farms

## THE PROMISE OF TECH

These 18 innovative tech leaders are transforming the golf business one tee time at a time.



ROSS LIGGETT,  
MANAGING  
PARTNER &  
CO-FOUNDER,  
METOLIUS GOLF



JASON PEARSALL  
FOUNDER & CEO,  
CLUB CADDIE



JEFF MA  
CHIEF DIGITAL OFFICER,  
TROON



### SECOND PLACE

**Soleta Golf Club**  
Myakka City, Florida



**Owner/Developer:** 536 Single RE LLC

**Architect:** Nick Price

**Contractor:** Heritage Links

**Cost:** \$20 million

The developers of Soleta Golf Club had a vision of world-class quality, sustainability and innovation and came up with a low-

#### What the judges said:

"Great golf visuals. Golf course is beautiful. Great mix of turf and native areas." – *Casey Paulson*

"Beautiful golf course design integrated nicely into the site. Sustainability is apparent throughout."

– *Kevin Norby*

"With a stunning design and serene setting, this golf course features endless native areas that soothe the soul — even for those who find themselves in the expansive waste bunkers. Once fully matured and built out, it is sure to become a favorite destination for many." – *Darryl Bartlett*



profile design which minimized earthmoving. Unlike many Florida courses, this one avoids excessive water hazards, emphasizing instead the natural terrain and offering playability for all skill levels.

The fairways, inspired by British links, use Celebration grass for firm and fast playing surfaces, and there is no rough anywhere on the course. Shots that miss the fairway land in native sands and the forgiving greens have many shapes and tiers to give multiple pin locations, allowing the course to play differently every day.

Almost every facet of the course was designed to have as little impact on the

surrounding environment as possible. The holes wind through undisturbed land, and much attention was paid to preservation of wetlands. Thousands of native trees and plants were relocated and reinstated, while sand from the site was used to shape dunes and fairways. Even tee markers are made from centuries-old petrified wood found on the property.

For water conservation, the design incorporates the Miakka River, which flows adjacent to the No. 5 green, to move water naturally. Lakes were engineered for natural flow, and the storm-drainage structures are all linked to the wetland system.