



# Windows in the Lakes

## Residence Brochure 2026

**Expert Surveyors - Aluminium-Specific Installers - Market Leading  
Products**



**Full supply, survey & installation  
model**



**A huge number of Installations to  
date**

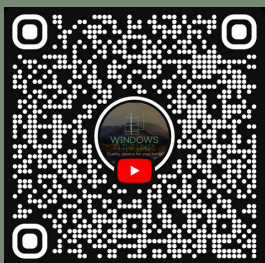


**Investment in digital surveying, &  
fully integrated project  
management technology**



**Manufacturer Showrooms  
displaying Slimline  
and Heritage products**

**Watch our Drone  
Videos on Youtube**



[www.windowsthelakes.co.uk](http://www.windowsthelakes.co.uk)  
[projects@windowsthelakes.co.uk](mailto:projects@windowsthelakes.co.uk)  
01768 254 554

**Follow us  
on Instagram**



**@WINDOWS\_IN\_THE\_LAKES**



When I founded Windows in the Lakes, the aim was simple: to raise the standard of glazing supply and installation across Cumbria and the Lake District, delivering premium products with genuine care, accountability, and craftsmanship you can trust.

Today, our teams work across the region with one shared commitment: to make every project seamless, transparent, and professionally managed from first enquiry to final sign-off. We provide a complete, end-to-end service that removes uncertainty, simplifies decision-making, and gives homeowners confidence at every stage.

Windows in the Lakes is proudly backed by our national sister company, The Fenestration Network. This gives our customers the best of both worlds: a highly personal, local service, supported by national-scale expertise, proven systems, and refined processes developed across hundreds of projects throughout the UK. That backing brings real advantages, from smarter project management and technical support to stronger purchasing power, greater efficiency, and access to leading UK and European manufacturers at highly competitive rates.

Wherever you are in Cumbria or the surrounding areas, we are here to support you. From your first conversation, you are guided through a structured, highly personal process led by experienced professionals. Our local surveyors and installation teams work closely with you throughout, and you also have the option to visit manufacturer showrooms to experience products in person before making final decisions.

As we continue to grow, Windows in the Lakes is investing in new technology, enhanced project management systems, and advanced design tools. This includes visualisation technology that allows you to see our glazing products superimposed onto your home, helping you make confident, informed decisions before production begins.

I'm proud of the products we specify, the relationships we've built, and the many successful installations completed across the region. Most importantly, I'm proud of the trust homeowners place in us when investing in their property — trust we work hard to earn and protect on every project.

This brochure is here to help you understand both our products and our approach. Whether you're replacing windows, opening your home with sliding or bifolding doors, or planning a complete transformation, our role is to guide you with clarity, expertise, and care.

Thank you for taking the time to explore Windows in the Lakes. We look forward to helping you create something exceptional.

---

*Thank you for considering us for your home.*

*Tom Evans*

*Founder, Windows in the Lakes*



★★★★★  
*Customer Google Reviews*

“Wonderful company from start to finish! Really competitive price and customer service was outstanding! Full house windows and doors replaced! Their fitter did an amazing job and very tidy! Recommended to all our family and friends! Thanks again!”

*-KB* ★★★★★

“Such a fantastic company to deal with, they were very professional which put us at ease. We love our new glazing and we would highly recommend Windows in the Lakes to anybody looking for new windows and doors.”

*-EL* ★★★★★

“We are looking to replace our windows and being quite remote, Tom was so helpful in advising us on what was best for us. We would definitely recommend Windows in the lakes and especially Tom to anyone looking for the right windows for their house.”

*-PC* ★★★★★

“Exceptionally good company from start to finish Tom and his team made everything so easy, really good products and installation. Would highly recommend”

*-MH* ★★★★★



“So comforting to have found a company that really understands the whole of the door and window market.

The installation was quick and tidy. My wife was happy so I am happy!”

*-AH* ★★★★★



# TIMBER & ALUMINIUM LOOK UPVC WINDOWS & DOORS

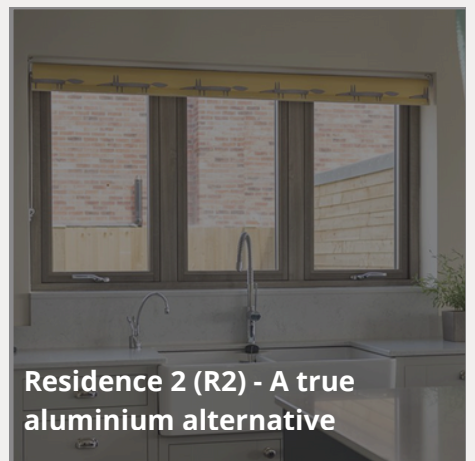
(RESIDENCE RANGE)



**Residence 7 (R7) - Modern versatility with a flush finish.**



**Residence 9 (R9) - The ultimate Timber alternative.**



**Residence 2 (R2) - A true aluminium alternative**

The Residence Collection is a premium suite of uPVC windows designed to replicate the timeless character of traditional timber while delivering all the advantages of modern performance. Renowned for their authentic timber-look profiles, these windows combine long-lasting durability with low-maintenance uPVC construction.

Every style within the collection features a flush exterior for a clean, elegant finish. The variations between them come down to interior detailing, frame depth, and specific design nuances, allowing each window type to suit different architectural requirements and aesthetic preferences.



# R2 ALUMINIUM ALTERNATIVE WINDOWS

(RESIDENCE RANGE)

A true aluminium alternative - built for the modern day.

## PERFECT FOR MODERN INTERIORS

### Symmetrical & Sleek

The Residence Collection are pioneers in their field developing window and door systems with technology and innovation at the forefront. Residence 2 is the architectural highlight of the collection, with clean lines and superb performance.

Very clear in its design, with a cutting edge internal shape its unconventional and unique.

### A very clean & modern aesthetic

Residence 2 is built to unquestionable market leading design standards, this effective and high performance solution offers clean lines and advanced functionality. An elegantly flush sash exterior and a unique square interior give Residence 2 its bold and modern appearance. All glass sightlines are perfectly equal providing symmetry, complementing the internal stylish square detail.

Residence 2 not only oozes design appeal but boasts superior performance. Certified with a window energy rating of A++ it accommodates the most thermally and acoustically efficient triple and double glazing, attaining U-values of 0.79 W/m<sup>2</sup>K with triple glazing, Passivhaus standard and 1.2 with double glazing.



## FEATURES & BENEFITS

Residence windows are available in a variety of styles.

From open-out windows, shaped windows, fixed windows, french windows, bay and bow windows, orangeries, conservatories, single and french doors and engineered doors the possibilities are endless.

Residence 2 is the architectural highlight of the collection, with clean lines and superb performance. Very clear in its design, with a cutting edge internal shape its unconventional and unique.

- ✓ **Equal Sightlines** - An elegantly flush sash exterior gives Residence 2 its bold and modern appearance. All glass sightlines are perfectly equal providing symmetry, complementing the internal stylish square detail.
- ✓ **Testing & Security** - Residence 2 achieves classifications on the British standard weather test. It has also passed all security tests, the glazing bead is always on the inside which contributes to a higher security performance.
- ✓ **Lock & Hinge Retention** - Residence 2 boasts superior screw retention reinforcements, locks and hinges are secured firmly into position. It is also specifically designed to accommodate the additional weight of triple glazed units.
- ✓ **9 Chamber Design** - Residence 2 has been engineered to meet current and anticipated future standards, other window frames typically off 3 or 5 chambers and are usually 70mm wide, Residence 2 has 9 chambers and is 100mm wide.
- ✓ **Manufacturing Techniques** - A mitre weld will fuse the joints together diagonally for a contemporary appearance or choose the Grad weld for a seamless diagonal weld. The Timberweld process welds the profiles with a timber look to both sides, or MechWeld/ External Timber Look (ELT) gives a diagonal weld to the internal, with a timber look to the external. Of course, there's also the traditional mechanical joint fabrication for the ultimate timber alternative process
- ✓ **Maintenance Free** - PVCU is an insulating material, keeping you cosy in the winter and cool in the summer, contributing to lower energy bills and carbon emissions. There is very little maintenance, to keep your windows looking new; a simple wipe clean will do.





# RESIDENCE 7

Modern Versatility with a flush finish.

It's hard to choose between the R9 and the R7 as both these windows are expertly crafted with a 1<sup>st</sup> class build quality, fit and finish.

Both are flush outside, but R7 benefits from being flush on the inside as well. Flush windows on both sides aren't that common, and this balanced look inside adds to the appeal of the R7.

- ✓ A+ energy ratings
- ✓ 20 Standard colourways
- ✓ Huge choice of accessories
- ✓ 75mm
- ✓ Double or Triple Glazed

## DESIGN & AESTHETICS

- ✓ Exterior & Interior: Both are flush, offering a clean and contemporary appearance
- ✓ Create more comfortable rooms
- ✓ Upgradable to better performance
- ✓ Optional intermediate panel locking
- ✓ Profile Depth: 75mm with 7 chambers making it suitable for most standard installation.
- ✓ Symmetrical Sightlines: Equal glass sightlines provide a balanced aesthetically pleasing look.

## WHERE CAN YOU USE R7 WINDOWS?

- ✓ Modern Homes & New Builds: Perfect for properties seeking a contemporary style.
- ✓ Renovation: Suitable for both traditional and modern British homes.
- ✓ Versatility Seekers: Homeowners wanting a blend of traditional flush aesthetics with modern design elements

## COLOUR OPTIONS

Chalk White



Clotted Cream



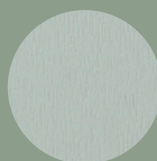
English Oak



Grained White



Painswick



No.38 Grey



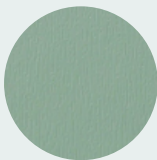
Vintage Cream



No.10 Black



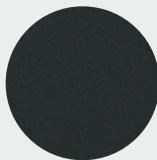
Cotswold Green



Corse Lawn



Eclectic Grey



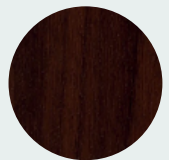
Golden Oak



Irish Oak



Rosewood



## KEY FEATURES

- ✓ Joint Options: Mitre Weld, Graf Weld, Timberweld and MechWeld joints available.
- ✓ Colour Choices: 11 colours including Slivered Oak, Clotted Cream and No. 10 Black, fully foiled throughout the rebate.
- ✓ Flexibility: It's 75mm depth allows for easier integration into various property types

## HANDLE OPTIONS





# RESIDENCE 9

The Ultimate Timber Alternative.

When it comes to uPVC timber-alternative windows, Residence 9 is the original. The internal and external styling, the way the corners are machined and the overall look of the window are superb.

The intent is to replicate heritage and 19<sup>th</sup> - Century windows, and R9 does it superbly for what is a UPVC window. You've got to get close to see that this is not a timber window.

- ✓ 100mm
- ✓ A+ energy ratings
- ✓ 23 standard colourways
- ✓ Huge choice of accessories
- ✓ Double or triple glazed

## DESIGN & AESTHETICS

- ✓ Exterior: Flush sash that replicates 19th-century timber windows.
- ✓ Interior: Decorative, featuring traditional detailing for an authentic heritage look.
- ✓ Profile Depth: 100mm with 9 chambers, providing superior thermal and acoustic performance.

## WHERE CAN YOU USE R9 WINDOWS?

- ✓ Heritage and Period Properties: Victorian, Georgian and stately homes.
- ✓ Conservation Areas: Designed to meet Article 4 Conservation Area guidelines.
- ✓ Homeowners Seeking Authenticity: Those who desire windows that closely replicate traditional timber aesthetics.

## COLOUR OPTIONS



## KEY FEATURES

- ✓ Butt Joints: Mechanically jointed frames mimic traditional joinery.
- ✓ Fully Foiled Rebates: Enhances the timber-like appearance.
- ✓ Colour options: 11 foiled finishes, 3 unfoiled colours, including Grained White, Golden Oak and No. 38 Grey.

## HANDLE OPTIONS





# R7 VS. R9

It's hard to choose between the R9 and the R7 as both these windows are expertly crafted with a 1<sup>st</sup> class build quality, fit and finish.

Both are flush on the outside, but R7 benefits from being flush on the inside as well. Flush windows on both sides aren't that common, and this balanced look inside adds to the appeal of the R7.



| Feature                 | Residence 9 (R9)                                   | Residence 7 (R7)                      |
|-------------------------|--|---------------------------------------|
| Profile Depth           | 100mm  | 75mm                                  |
| Chambers                | 9  | 7                                     |
| Exterior Aesthetic      | Flush  | Flush                                 |
| Interior Aesthetic      | Decorative (traditional)                           | Flush (modern)                        |
| Suitable Property Types | Heritage, period homes (Victorian, Georgian, etc.) | Modern, new builds, traditional homes |
| Energy Efficiency       | A+ Energy Rating<br>0.8Wm2K U-Value.               | A+ Energy Rating<br>0.8Wm2K U-Value   |
| Glazing Options         | 28mm double or 44mm triple glazing                 | 28mm double or 44mm triple glazing    |
| Price Indicator         | ££££ (Most Expensive)                              | £££ (Moderate)                        |

## Choosing the right Residence Collection Window for Your Property

### Heritage and Period Homes

- Recommended product: Residence 9 (R9)
- Why? R9 is designed to replicate 19th-century timber windows, making it ideal for properties in conservation areas or those wanting to maintain historical authenticity. The deeper 100mm profile and decorative interior enhance its traditional appeal.

### Modern and New Build Homes

- Recommended Product: Residence 7 (R7)
- Why? R7's flush design both inside and out offers a sleek, modern look. It's 75mm profile depth makes it compatible with newer properties, and the symmetrical sightlines provide a contemporary aesthetic.



# EVOLUTION TIMBER LOOK UPVC WINDOWS & DOORS

(HAND CRAFTED)



From their hands to your home.

Excellence is woven into every stage of the process.



**Individually crafted to meet Evolution's rigorous standards,** these luxury bespoke windows combine specialist expertise with premium materials and meticulous craftsmanship to create a truly next-generation product. Designed to replicate the timeless character of traditional timber, Evolution's

timber and timber-look windows and doors offer an authenticity that must be seen to be appreciated. Each piece is made with care, incorporating distinctive and finely detailed elements. Every window and door is tailored to your exact preferences and finished by hand by skilled craftsmen. Packed with thoughtful, precision-engineered features, Evolution products provide a refined and luxurious enhancement to any home.

Every window and door follows its own dedicated journey. Evolution is built on a belief that true craftsmanship cannot be replaced. For decades, their master craftsmen have refined the methods and tools that define the brands benchmark for design and performance. Their workshops are powered by people not machines. Every component - from georgian astragal bars to Mock Horn details - is hand-cut, assembled and finished by experienced specialists.

# BEAUTIFUL AESTHETICS

Every Evolution window includes intricate, handcrafted detailing and a true timber-effect finish. Whether your home is modern, period or country-style, there is a perfectly crafted solution to complement it. No sanding, no painting, and minimal maintenance are required. Their advanced Flush and Storm window collections combine the character of traditional timber with all the benefits of modern engineering - giving you timeless style without the upkeep.



**AUTHENTIC BUTT HINGE**

Traditional Butt Hinges help to create a truly authentic timber window aesthetic, reflecting original window design principles.



**HANDLES & STAYS**

Personalise your Evolution windows with our stunning selection of UK sourced standard, traditional and contemporary handles and peg stays.



**HANDCRAFTED JOINTS**

Traditionally crafted joints - each one passes through the hands of our team of master craftsmen, giving all the authentic beauty of traditional timber joinery.



**UNIQUE TRICKLE VENT**

Our windows do have trickle ventilation. It's easy to miss. Our unique design means you'll be free of unsightly bulges, with a seamless integration that keeps air circulating without compromising aesthetics.



**TIMBER AESTHETICS**

For character and beauty, very little beats the timber aesthetic. Our unique technology marries traditional wooden aesthetics with the highest performing technology. It's not timber. It's something better.



**COLOUR FINISHES**

Whatever your requirements, we have a colour for you. We have a range of authentic wood grain finishes as standard, and can paint your windows to one of over 200 RAL colours in-house.



**BEAUTIFUL SIGHTLINES**

Equal and perfectly balanced sightlines and frame proportions to deliver a greater glazed area, allowing more light into your home.



**CLASSIC GEORGIAN BAR**

Our georgian windows replicate the appearance and proportions of a traditional timber window with the authentic Georgian bar and ovolo finishing.

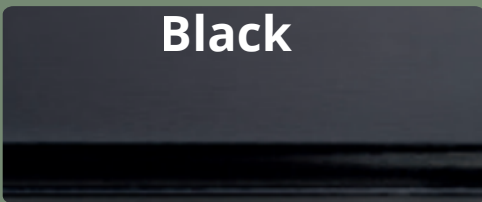


**TRADITIONAL CILL DETAIL**

Evolution cills have been developed to authentically replicate the depth of a traditional timber cill, seamlessly blending in with the window design.



# COLOUR OPTIONS



## STANDARD

As you would expect with Evolution, even our standard window furniture collection boasts exceptional credentials offering an attractive, contemporary offset nickle-based window handle which is available in a wide choice of colour and finish options to compliment the Evolution window range.



Standard  
White



Standard  
Chrome



Standard  
Gold



Standard  
Bronze



Standard  
Black

## TRADITIONAL

This exclusive, period range of handles and peg stays are an extremely popular choice to accompany Evolution windows. All of the handles are made of solid wrought iron, and are all completely hand finished in the UK. They are available in 2 different styles, the Monkey Tail and the Period Curved handle.



Period  
Curved  
Pewter



Period  
Curved  
Black



Bulb-End  
Pewter



Bulb-End  
Black



Monkey  
Tail Pewter



Monkey  
Tail Black



Bulb-End Peg Stay Pewter



Bulb-End Peg Stay Black



Monkey Tail Peg Stay Black



Monkey Tail Peg Stay Pewter

# CONTEMPORARY

The Ventiss range of handles offered by Evolution provide a contemporary yet stylish look to any window. They are available in two window furniture styles, the elegant Teardrop and the minimalist 360 round grip handle, they Ventiss range are available with matching peg stays to complete your window transformation.



Ventiss 360  
White



Ventiss 360  
Satin



Ventiss 360  
Chrome



Ventiss 360  
Gold



Ventiss 360  
Black



Ventiss Peg Stay White



Ventiss Peg Stay Satin



Ventiss  
Teardrop  
White



Ventiss  
Teardrop  
Satin



Ventiss  
Teardrop  
Gold



Ventiss  
Teardrop  
Chrome



Ventiss  
Teardrop  
Black

Ventiss Peg Stay Chrome



Ventiss Peg Stay Gold



Ventiss Peg Stay Black

## CAST WROUGHT IRON RANGE

### Door Handles



Pewter Lever &  
Offset Lever

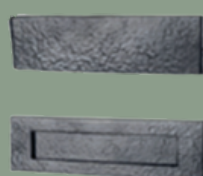


Black Lever &  
Offset Lever

### Letter Plates



Black Flush  
Letter Plate Set



Pewter Flush  
Letter Plate Set

### Door Knockers



5 Inch Rings  
Pewter & Black



Sculpted  
Pewter & Black

### Door Pulls



Octagon  
Pewter & Black



Round Pewter  
& Black

### Cabin Hooks



Cabin Hooks Pewter &  
Black

### Hinge Fronts



Hinge Fronts Pewter &  
Black

### Letters & Numbers



Letters & Numbers  
Pewter & Black

### Door Studs



Door Studs Pewter  
& Black



# SOLID CAST REGENCY RANGE

## Door Handles



Brass & Chrome Lever & Offset Lever

## Letter Plates



Brass & Chrome Flush Letter Plate Set

## Door Knockers



5 Inch Brass & Chrome



Doctors Brass & Chrome

## Cabin Hooks



Cabin Hooks Brass & Chrome

## Door Pulls



Octagon Brass & Chrome



Round Brass & Chrome

## Letters & Numbers



Letters & Numbers Brass & Chrome

# STANDARD RANGE

## Door Handles



White Lever



Chrome Lever



Gold Lever



Bronze Lever



Black Lever



White Lever/Pad



Gold Lever/Pad



Bronze Lever/Pad



Chrome Lever/Pad



Chrome Lever/Pad

## Letter Plates



Bronze Letter Plate



Black Letter Plate



Chrome Letter Plate



Gold Letter Plate



White Letter Plate





# GUARANTEES

(AS STANDARD)

Phone: 01768 254554

Email: [projects@windowsinthelakes.co.uk](mailto:projects@windowsinthelakes.co.uk)

Website: [www.windowsinthelakes.co.uk](http://www.windowsinthelakes.co.uk)



## Overview

| Product                  | Guarantee Duration          |
|--------------------------|-----------------------------|
| Aluminium & UPVC Frames  | 10 years                    |
| Glass Units              | 5 years                     |
| Moving Parts / Hardware  | 2 years                     |
| Installation Workmanship | 1 year                      |
| Aluminium Powder Coating | 20-year Colourfast Warranty |

### *1-Year Workmanship / Installation Guarantee*

Any failure of materials due to faulty workmanship under the terms of this Guarantee will be repaired or replaced at the discretion of Windows in the Lakes for 1 year from the completion of works.

### *Your Investment, Protected.*

Choosing new windows and doors is a significant investment. At Windows in the Lakes every project is structured to provide clarity, security, and protection from the outset.

Our approach combines clear documentation, staged payments, professional surveying, and manufacturer-backed guarantees - ensuring your project progresses only when key milestones are achieved.

### *Our customer protection includes:*

Staged payment structure aligned to survey, production, and installation milestones.

Full professional survey and technical sign-off before manufacturing begins.

Manufacturer warranties on frames, glazing and hardware.

Installation guarantee covering workmanship.

Card payment protections available where applicable.

Our systems and processes are designed to minimise risk, ensure accuracy, and give you complete confidence from first instruction through to final handover.

Full details of our customer protection measures are available on request.

### *Our Lead Times:*

**Aston Architectural / Smarts / Alumil / Residence** - 5-6 weeks from Final Configuration Sign Off.

**Cortizo** - 9-10 weeks from Final Configuration Sign Off.

[www.windowsinthelakes.co.uk](http://www.windowsinthelakes.co.uk)  
[projects@windowsinthelakes.co.uk](mailto:projects@windowsinthelakes.co.uk)  
01768 254 554

Follow us on Instagram





# Glazing Maintenance Guide

## Full Cleaning & Care Guide

### GENERAL CARE PRINCIPLES (ALL ALUMINIUM PRODUCTS)

#### USE:

- Warm Water + pH-neutral detergent
- Microfiber cloths
- Silicone-based lubricant for tracks

#### AVOID:

- Abrasives
- Solvents or bleach
- High-pressure washers
- WD-40 or oil-based lubricants

#### SLIDING DOORS:

- Frames & Glass: Clean with mild soapy water
- Tracks: Vacuum debris, wash, dry, apply silicone spray lightly
- Seals: Warm soapy water only

#### BIFOLD DOORS:

- Frames & Glass: Mild soapy water
- Hinges: Light silicone every 6 months
- Bottom track: Vacuum, clean, silicone spray
- Seals: Warm soapy water only

#### ENTRANCE DOORS:

- Frames & Glass: Mild soapy water
- Hardware: Mild soap only; light silicone on latches every 6 months
- Seals: Warm soapy water only

#### ALUMINIUM WINDOWS:

- Frames & Glass: Mild soapy water
- Friction Hinges: Light silicone on pivots only
- Loks: Light silicone every 6 months
- Drainage slots: Check every 3-6 months

#### FREQUENCY:

- External: Every 1-3 months
- Internal: Every 3 months
- Moving Parts: Every 6 months



#### WEATHER SEALS & GASKETS:

- Warm water + mild detergent only
- Avoid chemicals
- Check seating every 3-6 months

#### ROUTINE MAINTENANCE SCHEDULE (DETAILED):

- External frame cleaning: 1-3 months
- Internal frame cleaning: 3 months
- Track vacuuming: Monthly
- Lubrication: Every 6 months
- Drainage checks: Every 3-6 months

#### IMPORTANT NOTES:

- Regular light cleaning is preferred.
- Abrasives damage coatings
- Tracks must remain free from grit
- Only use silicone-based lubricants
- Report operational issues promptly

