



Delivering collaboratively with parish and town councils

A look at how environment, transport and infrastructure services across SCC are working to try to create opportunities to work with local councils in delivering place services to our communities



SURREY
COUNTY COUNCIL

Who we are



Natalie Fiskin

Chief of Staff

- Overarching responsibility for engagement & customer standards across ETI
- Senior Responsible Owner for Fuel Poverty



Jo Cossins

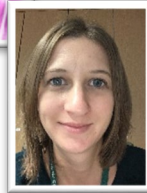
Customer & Communities Lead

Debbie Hickman

Community Engagement Manager



- Manage the overarching engagement network to ensure we are collaborating across ETI, sharing best practice and applying consistent standards



Michelle Collins / Sarah Woodworth

Stakeholder Manager (job share)

- Support County Councillors in their local highways role including funding.
- Manage engagement with local stakeholders on key local topics



Deborah Fox

Placemaking Group Manager

- Taking a multi-disciplinary approach to infrastructure in towns and villages 'do a place once'.
- Leading coordination of SCC's community infrastructure needs.



Ben McCallan

Climate Change Manager

- Leads on engaging and enabling communities to tackle climate change

Collaborate to
deliver well-
funded
infrastructure
and
placemaking
for people



Are you
neighbourhood
planning? Get
ahead and
embed our new
design code for
healthy streets



1. Process



2. Streets for Surrey
core principles



3. Governance



4. General layout
principles



5. Carriageway and
junction design



6. Pedestrian and
pavement design



7. Street trees



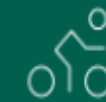
8. Sustainable drainage
systems



9. Street furniture,
lighting and signage



10. Vehicle parking



11. Cycling



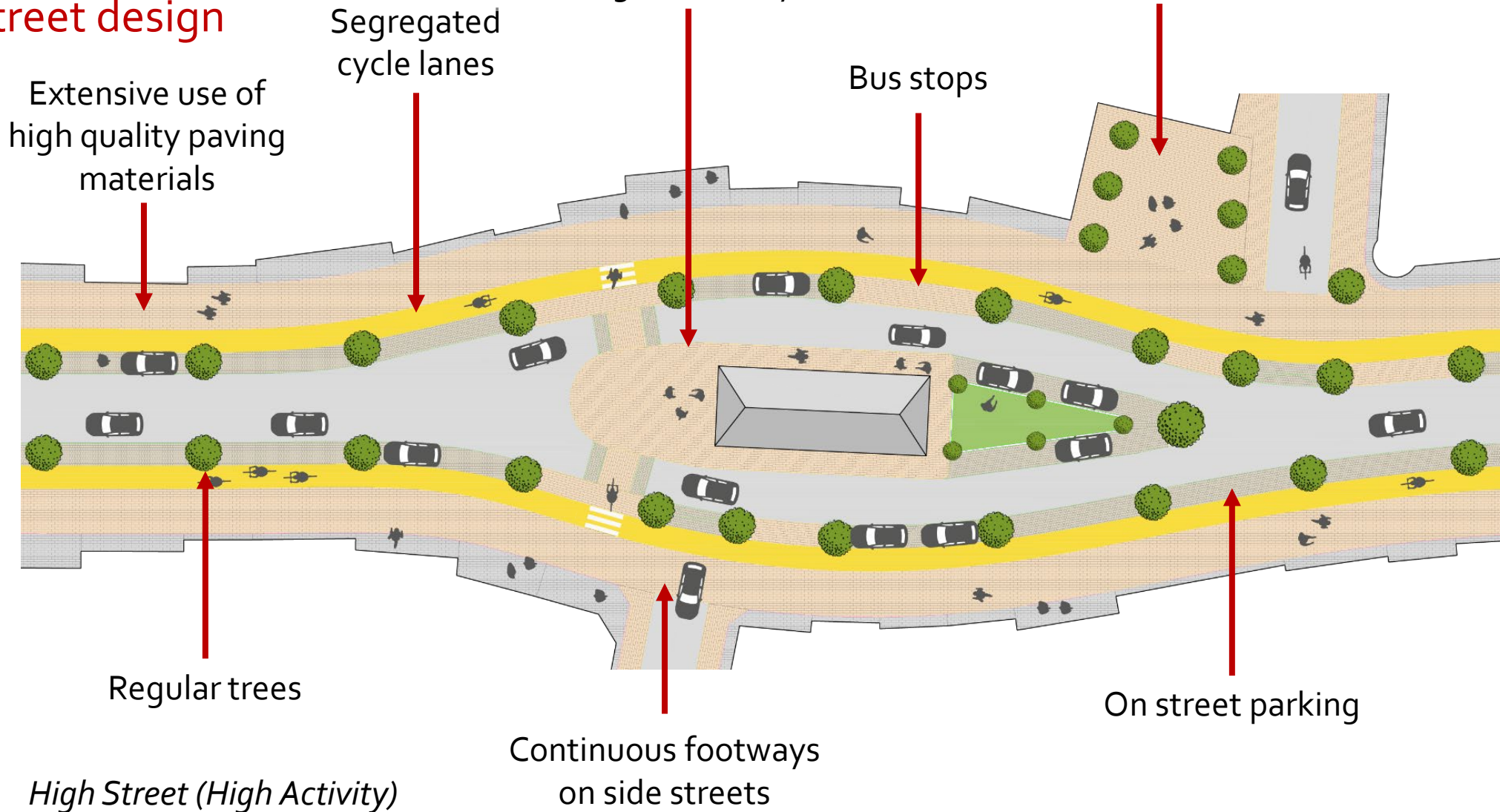
12. Integrating public
transport

The code

Street design

Irregular street section,
opening out at areas of
higher activity

Opportunity for public
space at key junctions



The code

Capturing the character of Surrey in the detail



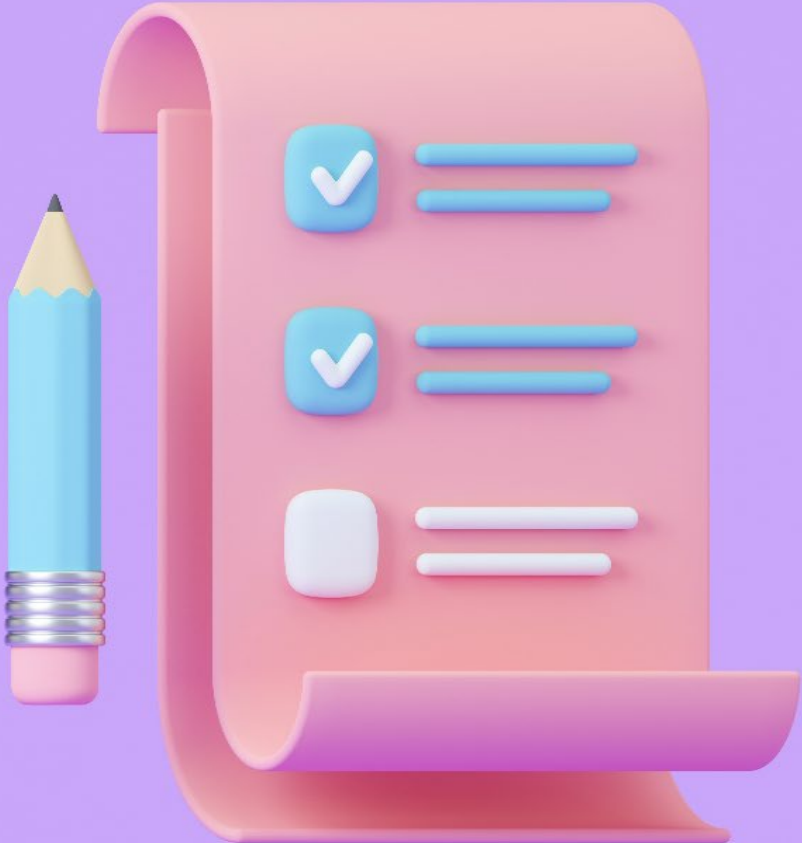
Public benches along a waterway and street signage in Shere, Surrey

Working
together and
building
communication



SURREY
COUNTY COUNCIL

SCC Highways guide for parish council clerks



Where can I go for highways information?

How can I find out what is happening in my area?

- **One.network** – When works are ready to be delivered on the highway and have received a road permit they are logged onto this national public website. Emergency works are included within 2 hours of them being logged with Surrey County Council. [one.network](#). You can sign up to update alerts for your local area.
- **Roadworks Map** – The same information is also logged onto the Council’s road works map, and you can sign up to alerts [Roadworks - Surrey County Council \(surreycc.gov.uk\)](#)
- **Highways Bulletins** – Every week Surrey County Council publish, post on social media and email out a bulletin of all the works due to take place within a borough/district in the next fortnight. You can view the latest version. [Weekly highways bulletin - Surrey County Council \(surreycc.gov.uk\)](#)
- **Winter Maintenance Programme** – See the programme at [Council’s Winter Service](#) - salting programme and where the maintained grit bins are located on our [Winter Service map](#):

What about the long term plans for my area?

- **Highway Maintenance Investment Programme (Horizon)** – Our planned maintenance for your area, including roads and pavement works, drainage, traffic light and bridge maintenance works is included on our Horizon map [Horizon – highway maintenance investment programme - Surrey County Council \(surreycc.gov.uk\)](#)
- **Major Maintenance Projects** – Updates on the major maintenance projects the Council is collaborating on are detailed here: [Major maintenance projects - Surrey County Council \(surreycc.gov.uk\)](#)

How can I find out what is happening on rights of way?

- **General information on vegetation cuts on rights of way** can be found here [Contact us or report a problem on a Right of Way - Surrey County Council \(surreycc.gov.uk\)](#)
- If you set up a profile with the countryside access reporting facility you will have **access to a map** that logs all enquiries made and the outcomes, as well as when maintenance will take place in general. [Public Rights of Way \(surreycc.gov.uk\)](#)

Working with your County Councillor



SURREY
COUNTY COUNCIL

Volunteering next to the highway

Key Documents:

[Community Highways
Volunteering Policy](#)

[Community Highways
Volunteering Guidance](#)



SURREY
COUNTY COUNCIL

Volunteering on rights on way

Key Documents:

[Getting Involved with Rights of
Way - Surrey County Council](#)
(surreycc.gov.uk)



SURREY
COUNTY COUNCIL

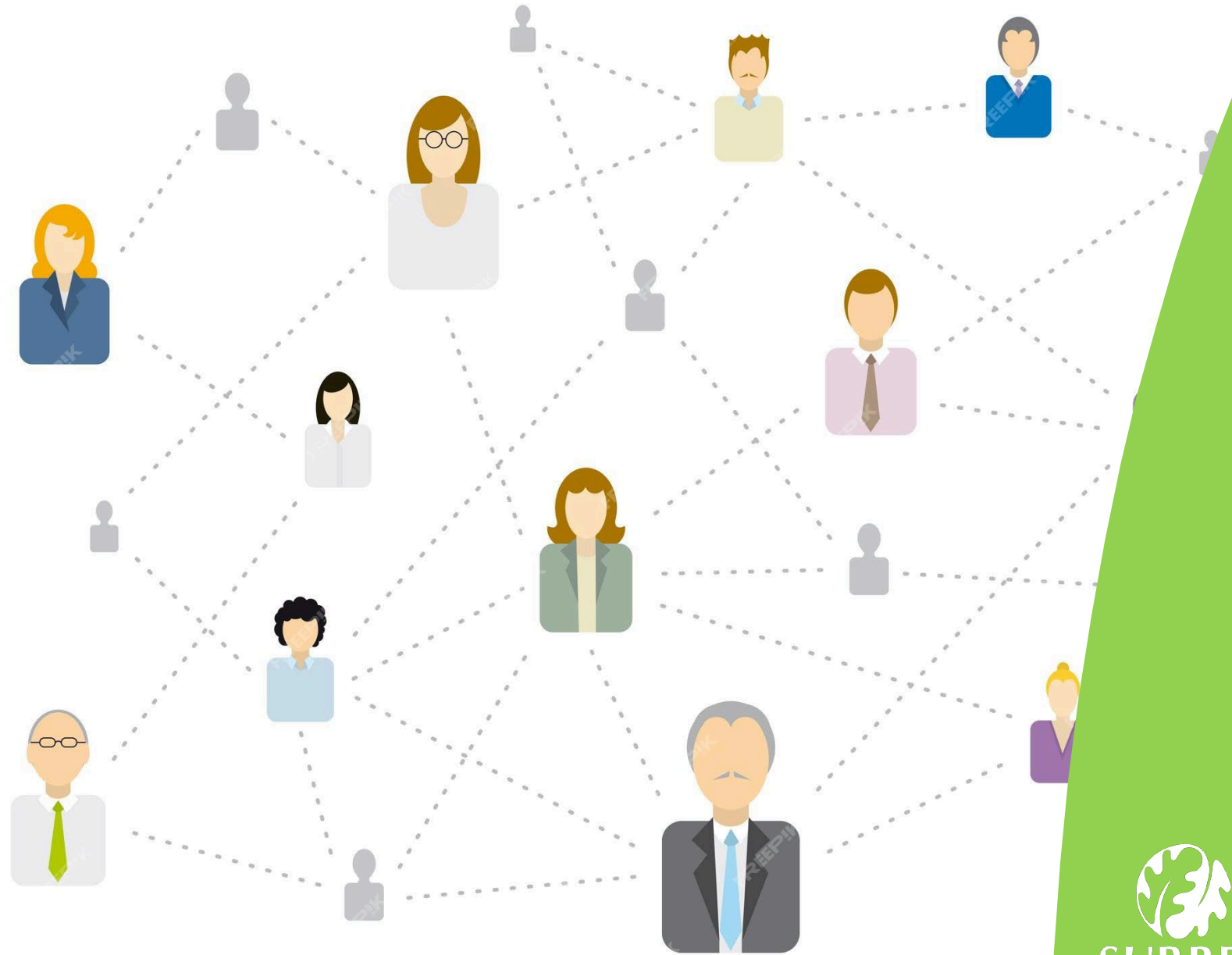
Enable communities to do more for themselves



Engage earlier
& in more
inventive ways



Create the right
connections to
unlock
maximum value
and reach



SURREY
COUNTY COUNCIL

Understanding Your Emissions

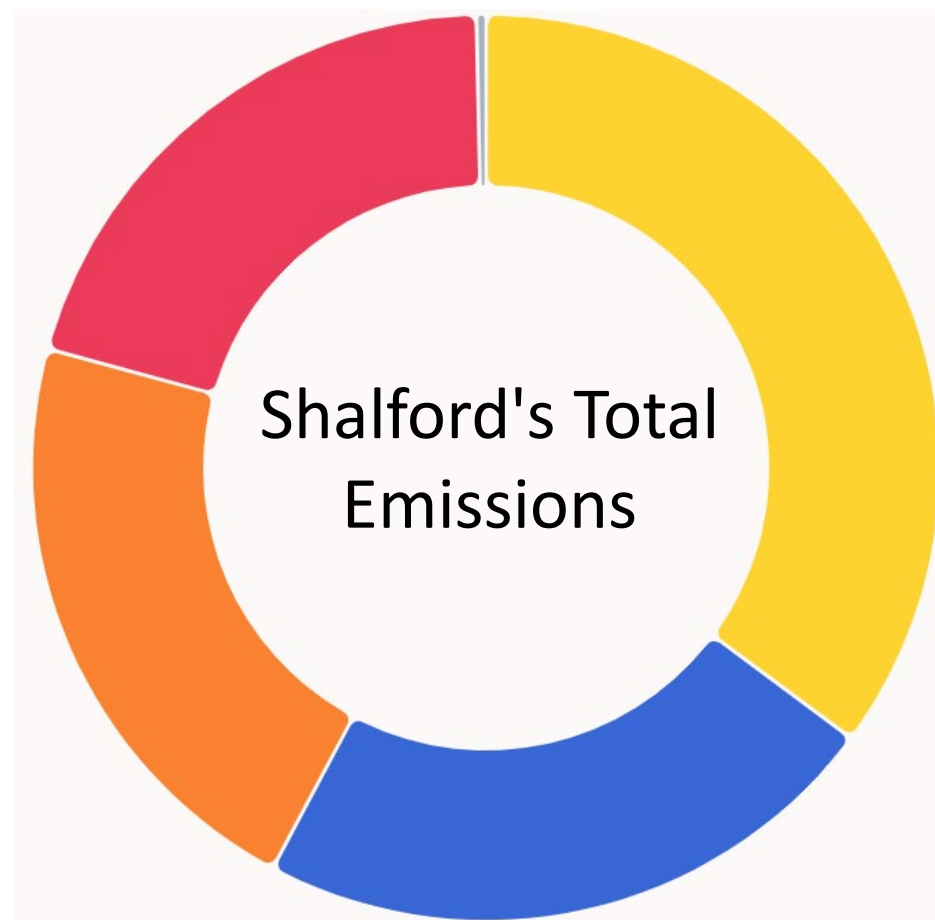
Shalford (Guildford)

36,821t CO₂e*

total consumption footprint (p.a.)

EMISSIONS BREAKDOWN (t CO₂e)

Consumption of goods and services	12,946
Travel	8,333
Food and diet	7,891
Housing	7,522
Waste	129



Is Our Footprint Average?

This image shows Shalford's consumption footprint vs. the national average (with each category broken down into its subcategories).

The starkest contrast is in emissions from consumption and purchasing of goods and services, at 3.9t versus 2.98t as a national average (the white X shows those sub-categories)

