



**AURORA**  
A SOLUTION FOR EVERY STORY



# ActivWALL™

Designed by Teachers for Teachers

**ActivWALL™** is a patent pending, interactive, educational storage system that supports student agency in the classroom by allowing teachers to customize their classrooms with personalized activities and learning tools tailored to the needs of their students.



# INTERACTIVE GALLERY



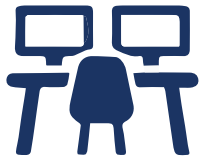
Scan QR code to watch the ActivWALL new product introduction video.



Scan QR code to watch interview with Angie Smith about her experience with ActivWALL.

# FUNDING THE SALE

- Capital Funds for Building Improvements
- Education Funds for Equipment
- Annual Building Funding
- Title & Grant Funding



## Furniture

**ActivWALL™** is furniture that doesn't need to be anchored to the floor, which makes it incredibly useful in older buildings with asbestos flooring. It's also easy to uninstall and reinstall in a new location.



## No Construction Needed

**ActivWALL™** is the perfect alternative to traditional casework, with installation options that don't require patching of the wall.



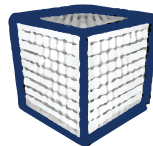
## Electrical

Grommets can be added to the slat wall to draw power from existing electrical outlets, providing immediate access to electricity.



## Personalization

**ActivWALL™** is one of a kind, with slat wall accessories that give teachers the power to personalize their own wall system from thousands of possibilities.



## Density

We did the math!  
**ActivWALL™** offers 3x the storage capacity of traditional casework through its use of the vertical plane, providing between 470 and 590 cubic feet of storage for four bays.



## Floor Area

With increased storage density comes the extra benefit of reclaiming up to 50 square feet of floor space in the classroom.

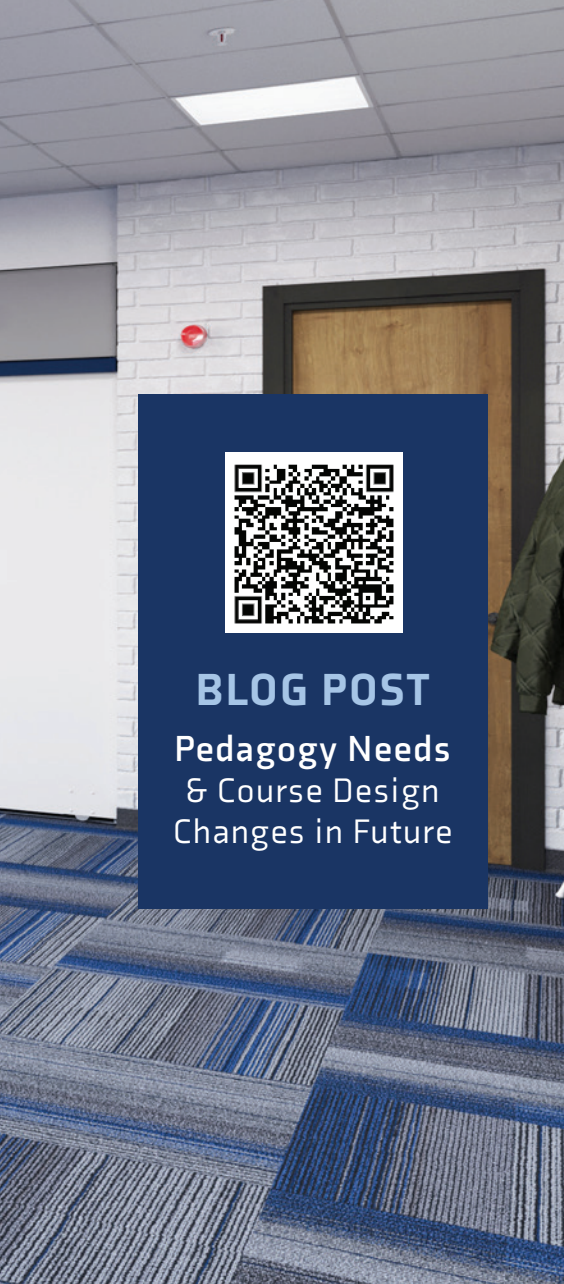




# PEDAGOGY SHIFT

A pedagogy shift refers to a significant change or transformation in the methods, approaches, and philosophies of teaching and learning. It involves rethinking and adapting the ways in which education is delivered to better align with the evolving needs of students, advancements in technology, and changes in society. Pedagogy shifts can occur at various levels, including within a single classroom, an entire school or institution, or even on a broader scale within an educational system.

**ActivWALL™** can transform the individual classrooms or the entire district by focusing educators on **Active Learning strategies** engaging students in activities that require them to participate, discuss, analyze, and apply concepts. ActivWall™ facilitates the shift away from passive listening and focuses on hands-on experiences.



## STUDENT CENTERED

A shift towards **student-centered learning** emphasizes tailoring education to individual student needs, interests, and learning styles. This approach encourages active participation, critical thinking, and self-directed learning, that supports student agency in the classroom.

**Student agency** refers to learning through activities that are meaningful and relevant to learners, driven by their interests, and often self-initiated with appropriate guidance from teachers. To put it simply, student agency gives students voice and often, choice, in how they learn.

**ActivWALL™** provides a solution that creates zones within the classroom, dedicated areas for collaboration, quiet individual work, and student-centered learning.

## PROJECT BASED

**Project-based learning** shifts the focus from isolated subjects to interdisciplinary projects. Students work on real-world projects, applying knowledge and skills to solve complex problems. **ActivWALL™** promotes collaborative, project-based learning allowing students to apply knowledge and skills to solve complex problems as a team. Educators can configure **ActivWALL™** into zones for multiple groups of students work on individualized material simultaneously – increasing the effectiveness of the classroom.

## INCLUSIVE EDUCATION

**Inclusive pedagogy** aims to create equitable learning environments for diverse student populations, addressing different learning needs and styles. Educators must ensure that every student, regardless of their abilities, feels valued, supported, and included in the learning community. Inclusion is not just about physical accessibility, but also about fostering a sense of belonging and ensuring that all students can actively participate in the learning process. By providing easily configurable spaces within the classroom that can be tailored to address individual student needs, **ActivWALL™** demonstrates commitment to the unique needs of every student.

## ASSESSMENT METHODS

Shifting **assessment methods** from traditional exams to more authentic forms of evaluation, such as project portfolios, presentations, and peer assessments, can provide a more comprehensive view of students' abilities.

**ActivWALL™** fosters this educational shift by providing flexible, configurable space for collaboration, presentations, group work, team building and peer assessments while creating more classroom space for students and better organizing storage of necessary student materials. All this supports student agency in the classroom.



# MODULE FAMILY



01

## In-Room Library

Literacy is a fundamental tool in the classroom, providing a strong foundation for learning, critical thinking, and comprehension of complex concepts. **ActivWALL™** provides a literacy functionality to the classroom environment, acting as a wall when needed but transforming into an expansive in-room library when pulled out. This incredible feature allows for storage of up to 350 books per pull-out Pivot Wall module, providing students with a cornucopia of literary treasures right at their fingertips – without ever leaving the classroom! The Pivot Wall ensures that no student is left behind, regardless of their reading level or background.

### Features

- 350 Book In-Room Library
- Removable Book Displays
- Front Facing Book Display
- Student Accessibility without Teacher Intervention

**MORE**  
ActivWALL  
Options





02

## Presentation Zone

**ActivWALL™** offers a cutting-edge configuration with a dedicated presentation area that can significantly enhance the learning experience. This exclusive feature allows for versatile use, accommodating full-class instruction, small group activities, or individual workstations. With its modular design, ActivWALL™ can be easily reconfigured to support different teaching strategies and learning styles.

## Features

- Stage-like dedicated presentation platform
- Surfaces are projector screen capable, white board writable, and magnetic.
- Student accessibility without teacher intervention.



# MODULE FAMILY



03

## Workshop Storage

**ActivWALL™** is an integrated technology system that provides high-density, easy-access storage for teacher manipulatives, project-based learning materials, STEAM materials, and digital tools for teachers.

### Features

- Storage for Teacher Manipulatives, STEAM/ Maker Space, and Activity Based Materials
- In-Wall Electrical Power for Digital Storage and Charging
- Slat Wall Storage Accessories Standard



04

## Collaboration Zone

**ActivWALL™** can create multiple zones for student collaboration. Teachers can configure the system for multiple teams to work on individualized material at the same time increasing the effectiveness of the classroom.

### Features

- Multiple sliding white board writable and projection surfaces.
- Pivot walls that pull out to create divided/ private collaboration zones
- Student accessibility without teacher intervention
- 6 writing surfaces for multiple teams to work





05

## General Storage

Classroom storage for less frequently accessed or bulky student and teacher materials can be accomplished in the **ActivWALL™** General Storage module. Shelves can be equipped with adjustable dividers to create “cubby” storage. Longer term supplies storage can be accomplished in **ActivWALL™** upper cabinet storage.

### Features

- 80 Cubic Feet of Storage
- Adjustable to Fit Bulky Items or Totes
- 250 Pounds per Shelf Capacity
- Student Accessibility without Teacher Intervention



06

## Office Space

**ActivWALL™** Office module creates additional classroom learning space by providing a teacher office within the ActivWall. Desktop, lighting, electrical power and seating can all be available or easily hidden behind the sliding white board.

### Features

- 12 square feet desk surface
- Easily Accessible Supplies Storage
- Slat Wall storage accessories standard
- Integrated lighting and electrical outlets
- Secure, Hidden from Classroom when Closed

# MODULE FAMILY



## Inclusion Zone

**ActivWALL™** is designed to meet the needs of students with IEP and 504 plans, offering a supportive space where they can manage their emotions, recharge, and focus on their studies. This dedicated area is ideal for catching up on missed work and staying engaged in the classroom, helping every student achieve their full potential helping every student achieve their full potential. By fostering a positive and inclusive learning environment, ActivWALL™ encourages students to thrive academically and personally.

## Features

- Designated zone for quiet inclusion of special needs or work space for makeup work or re-testing.
- Electrication & Lighting Available
- Desk/Workspace Options
- Student Accessibility without Teacher Intervention



# MODULE OPTIONS

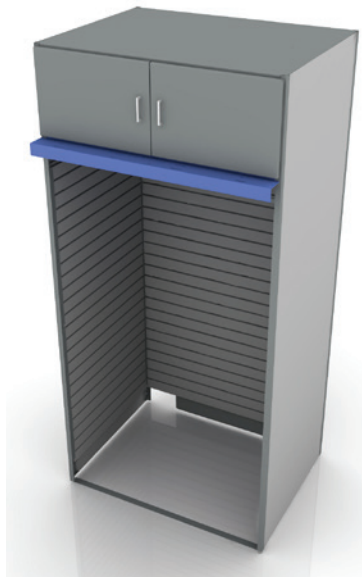


**SHELVING ONLY**  
80 Cubic Feet of Storage



**AWMOD-48736100-SH**

**SLATWALL ONLY**  
Slatwall on 3 Sides



**AWMOD4836100-NOPD**

**PIVOT WALL**  
Pullout Pivot Wall  
Slatwall on 2 Sides



**AWMOD4836100-PD**

# TYPICAL CLASSROOM OPTIONS



## 5 MODULE TYPICAL CLASSROOM

### Shown

5 Units: 20 feet across

- General storage
- Slatwall storage
- Folding pivot walls
- Overhead cabinets

Sliding whiteboard not shown for clarity purposes.





# 4 MODULE TYPICAL CLASSROOM

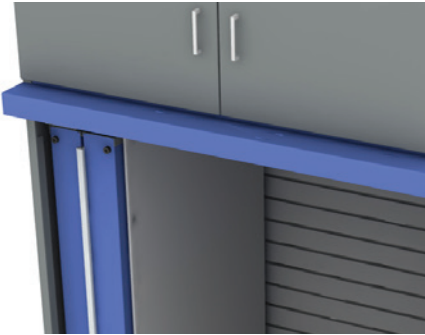
## Shown

4 Units: 16 feet across

- General storage
- Slatwall storage
- Folding pivot walls
- Overhead cabinets

Sliding whiteboard not shown for clarity purposes.

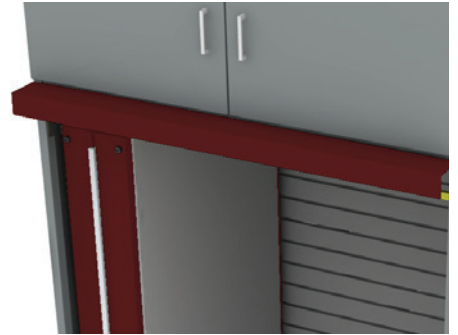
# FINISHES



HERITAGE BLUE



ADOBE



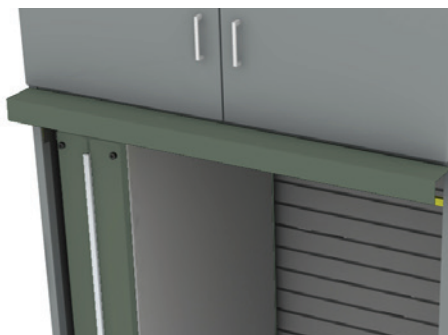
CRANBERRY



LIMON



NAVY



OLIVA



PURE WHITE

## GLOSS-TEK COLORS



### Looking for more options?

To view a more extensive selection, visit [our website](#) or scan QR code below.





# ACCESSORIES



Drawers



Wire Baskets



Electrical Outlet  
Back Panel Access



Literature Bins



LED Lighting



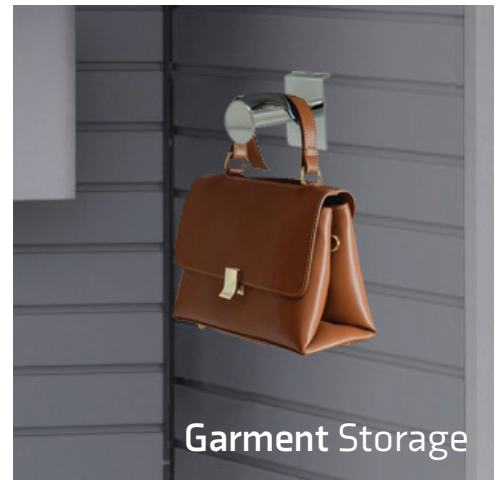
Slatwall Table Top



Bin Dividers



Locking Cabinet



Garment Storage



# ActivWALL™

Designed by Teachers for Teachers



## AURORA

[www.aurorastorage.com](http://www.aurorastorage.com)

600 South Lake Street • Aurora, IL 60506

Ph: 630-897-6951 • Fax: 630-897-6994

Toll Free: 800-277-1699

AWB-080524

Contact your regional today:



Sourcewell 



Contract Holder  
Contract 47Q5MA21D08R9

U.S. Small Business Enterprise